

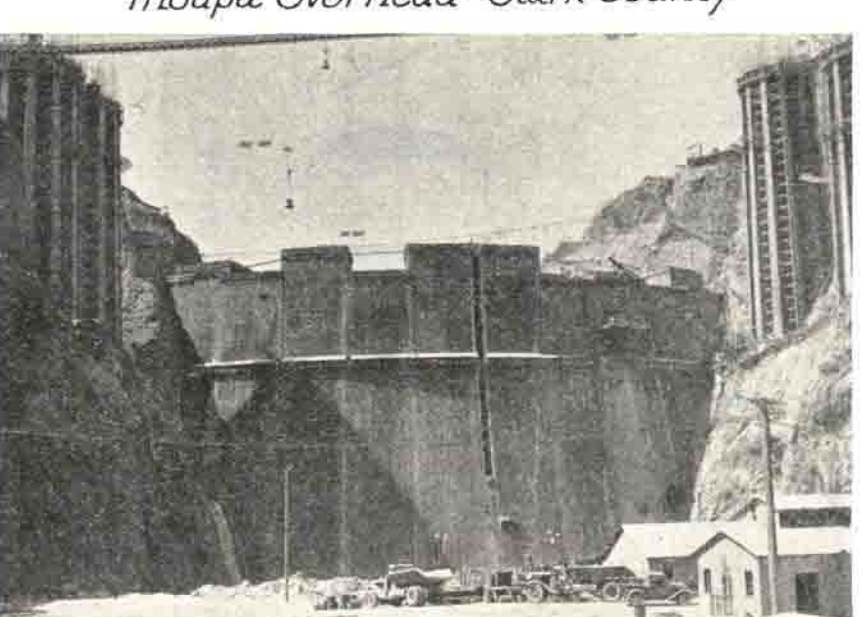
Rim O' the Lake Drive - Lake Tahoe



Typical Nevada Highway - Lincoln County



Moapa Overhead - Clark County



Boulder Dam - nearing completion



Walker Lake



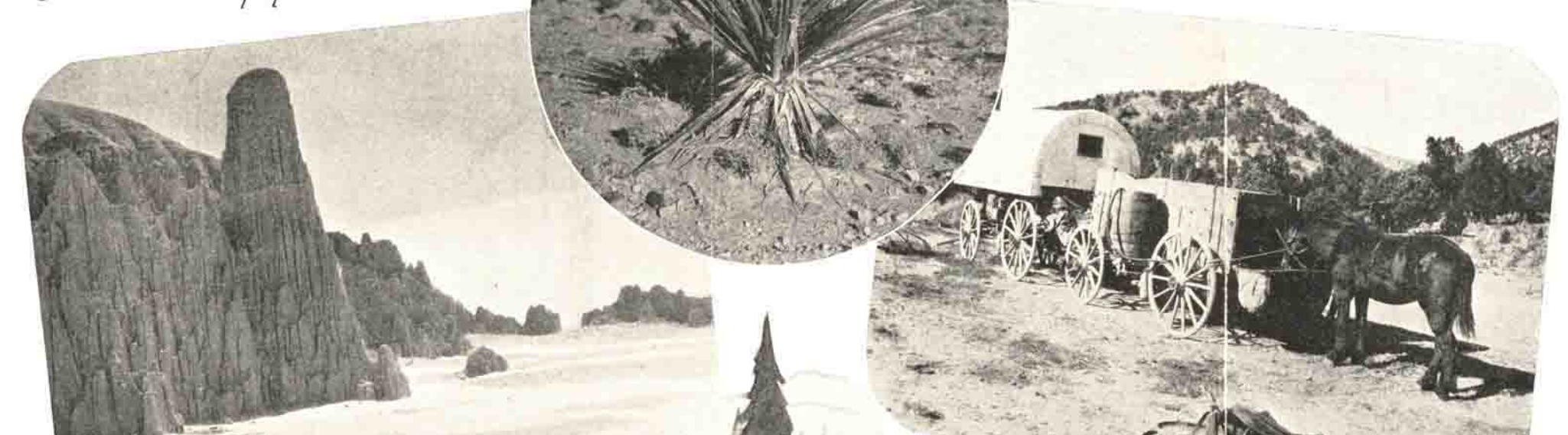
Goldfield - Famous Old Mining Center

Rodeo Days Mt. Rose



Snow Removal Equipment - Lake Tahoe

Native Nevada Cactus

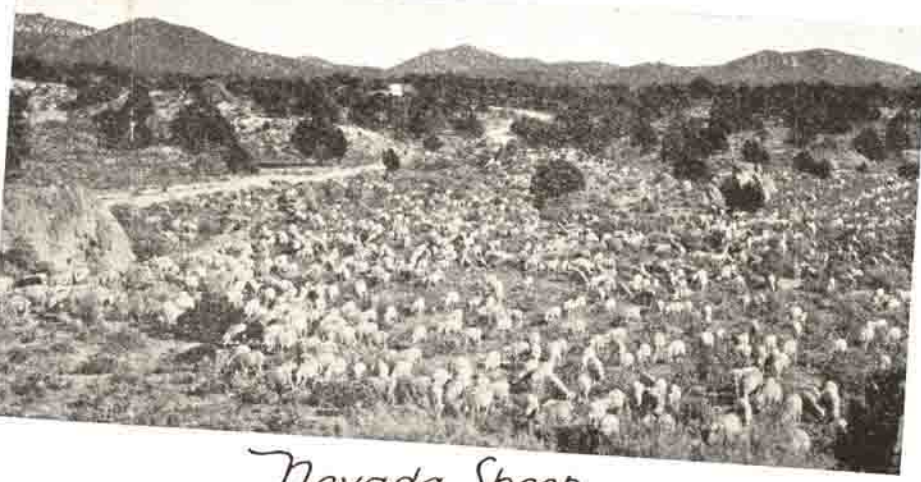


Cathedral Gorge State Park

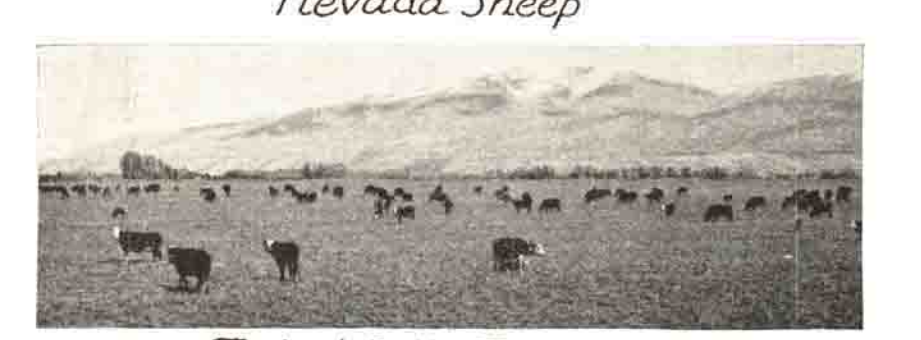
Sheep Camp Outfit



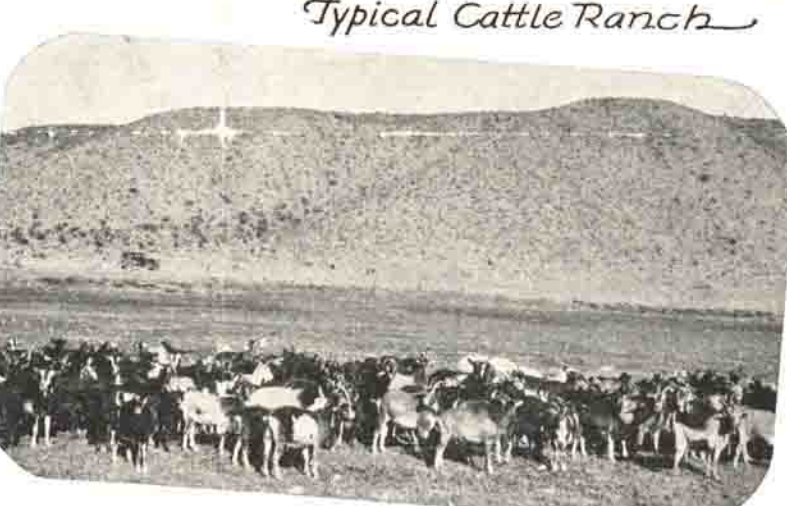
Native Nevada Cactus



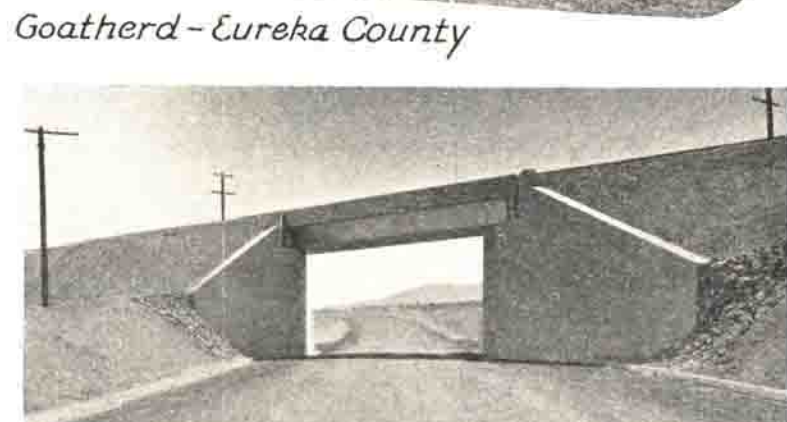
Nevada Sheep



Typical Cattle Ranch



Goatherd - Eureka County



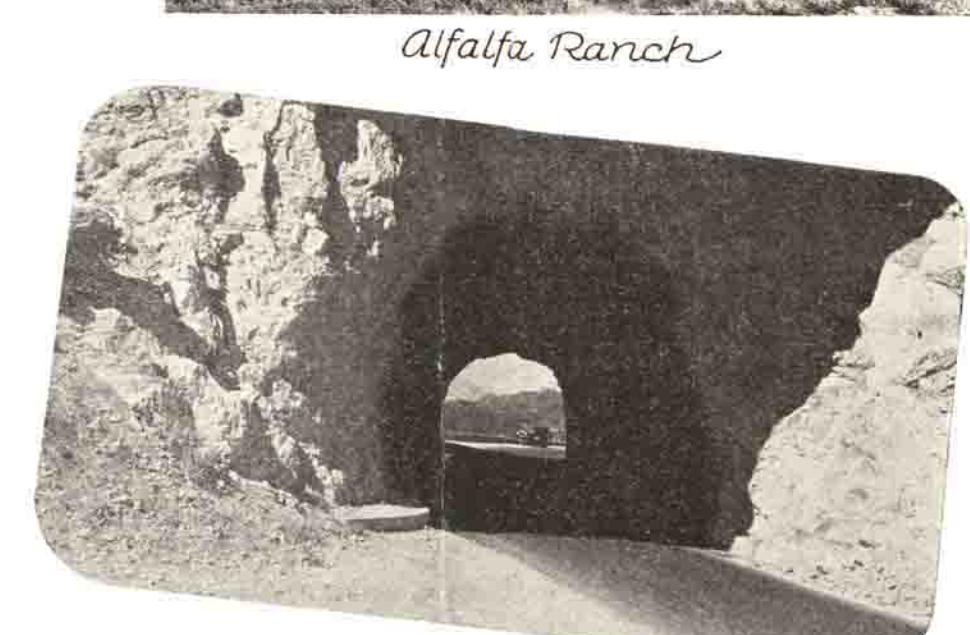
Underpass - Arrowhead Trail Highway



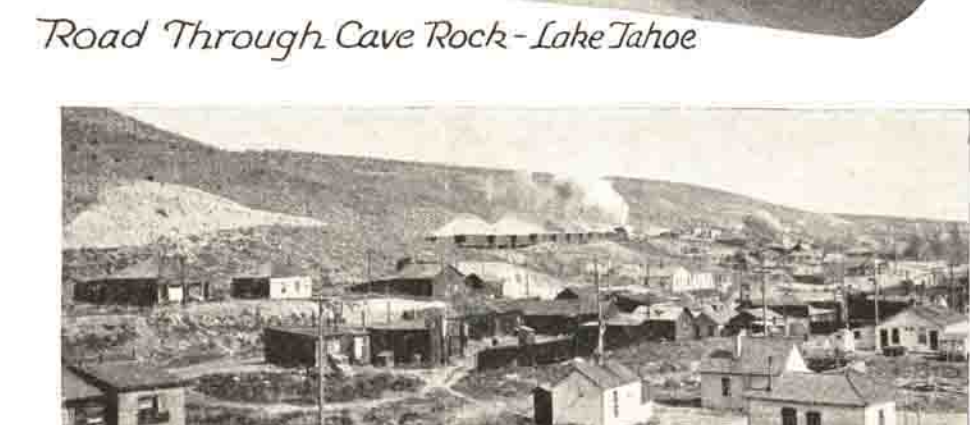
Old Fort Churchill State Park



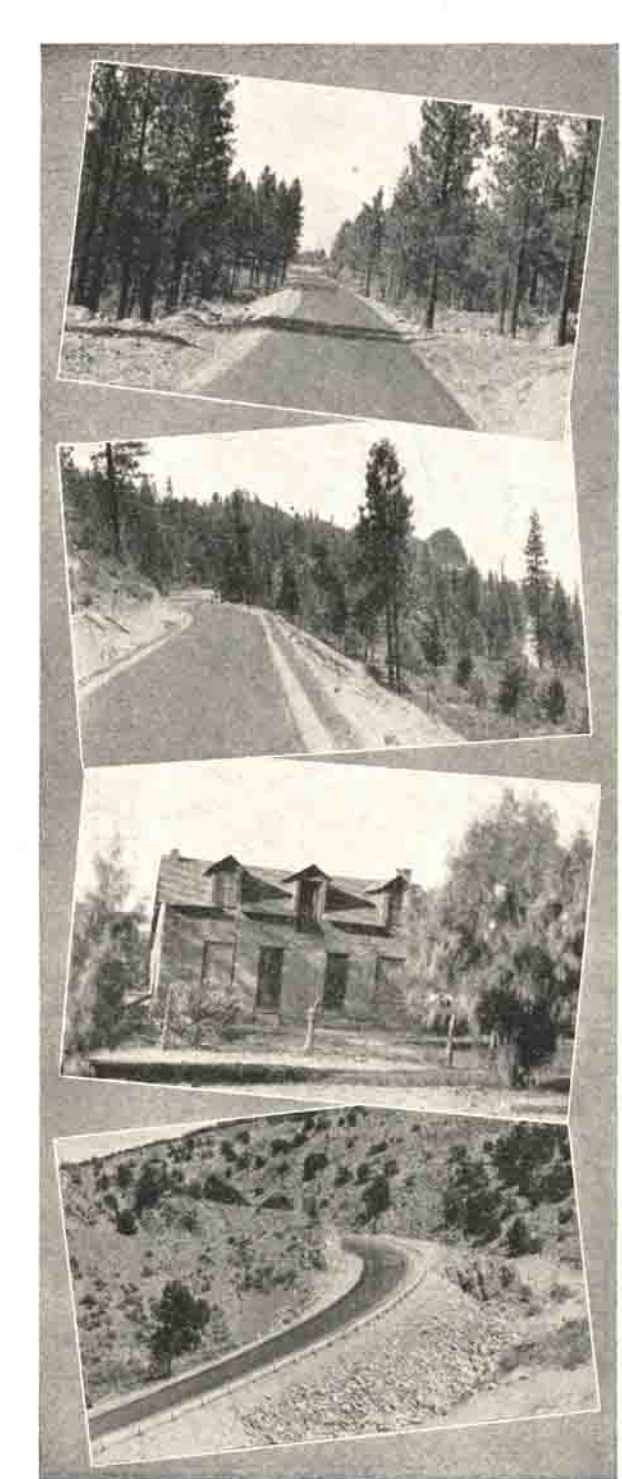
Alfalfa Ranch



Road Through Cave Rocks - Lake Tahoe



Mining Camp



1935
ROAD MAP
OF THE
STATE OF NEVADA

Showing
U.S. AND STATE ROUTES
1935

ROBERT A. ALLEN
State Highway Engineer

FOR FREE DISTRIBUTION ONLY
Courtesy of
THE STATE HIGHWAY DEPARTMENT
CARSON CITY, NEVADA