

# Welcome

Nevada Department of Transportation  
Public Meeting

I-15/Tropicana Interchange Feasibility Study in Clark County, NV

## Ways to Comment Tonight



- Comment during public meeting
- Comment form
- Court reporter
- Comment box

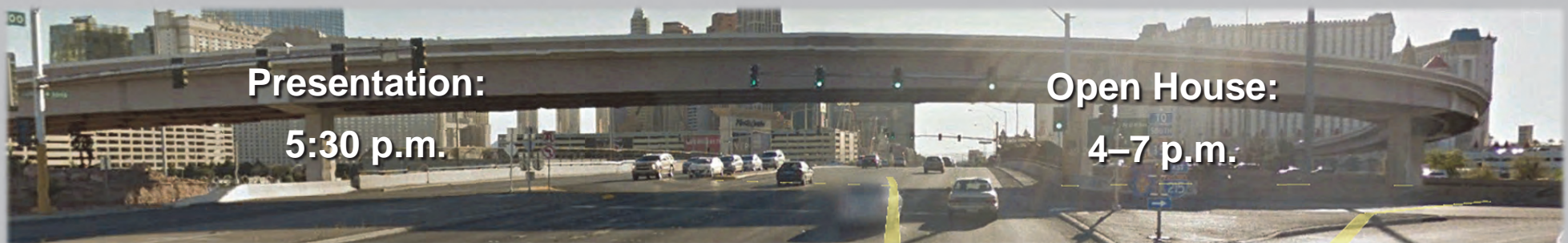
**Comments are due October 16, 2015, 5 p.m.**

[info@dot.state.nv.us](mailto:info@dot.state.nv.us)  
(Subject: I-15/Trop)



Jeff Lerud P.E.,  
Senior Project Manager  
1263 South Stewart Street  
Carson City, NV 89712  
[jlerud@dot.state.nv.us](mailto:jlerud@dot.state.nv.us)

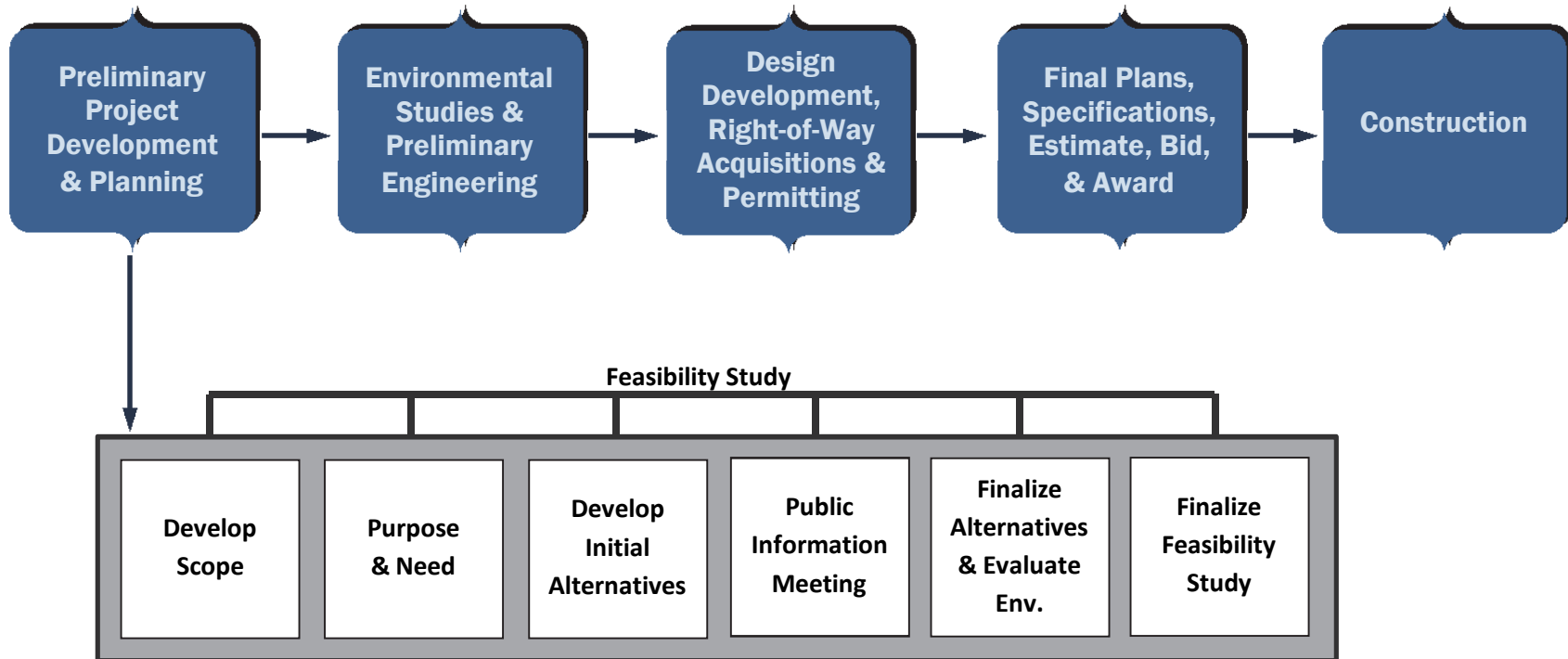
**zero**<sup>®</sup>  
**Fatalities**  
*Drive Safe Nevada*



**Presentation:**  
5:30 p.m.

**Open House:**  
4–7 p.m.

**All Information Presented is Preliminary and Subject to Revision**



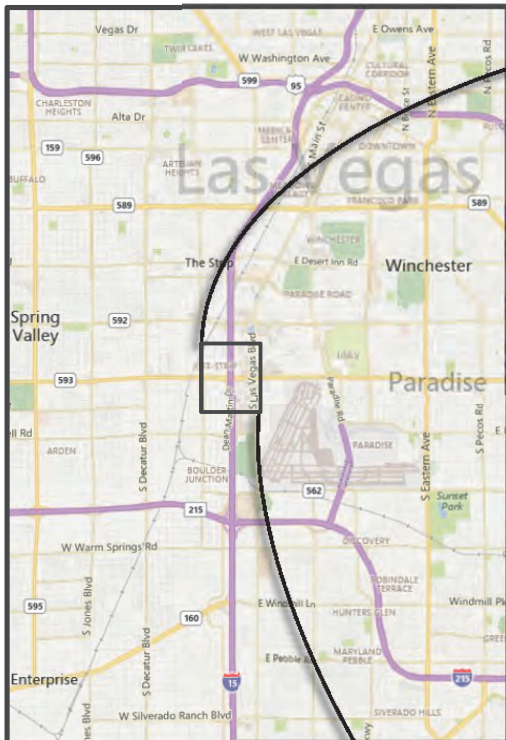
September 29, 2015



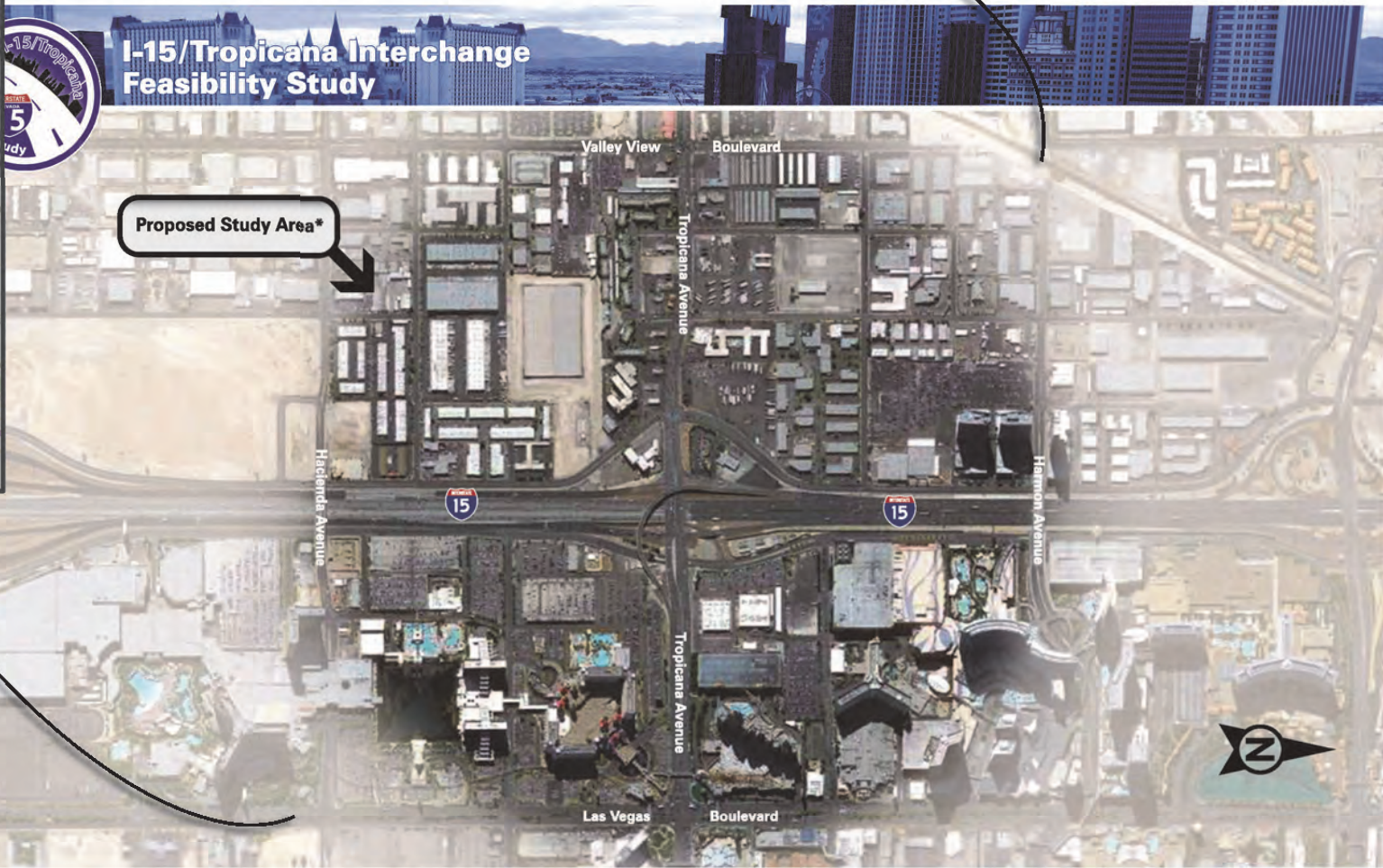
# Nevada Department of Transportation Public Meeting

I-15/Tropicana Interchange Feasibility Study  
Clark County, NV: Project Location

Sept. 29, 2015




**Note:** The map below is rotated, with North pointing to the right.



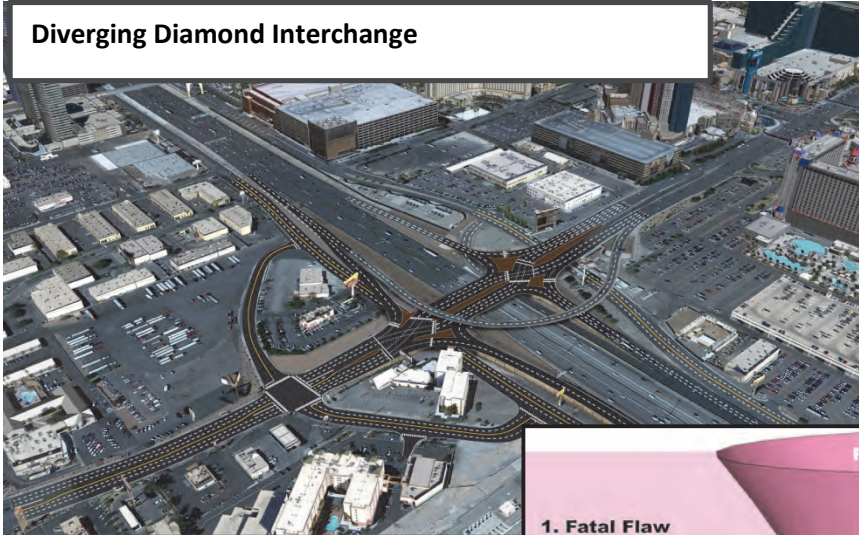
**The Study** Project location is the I-15 and Tropicana Avenue interchange. It extends from Hacienda to Harmon along I-15, and from Valley View to Las Vegas Boulevard along Tropicana.

The Study limits are subject to change based on impacts of individual project solutions.

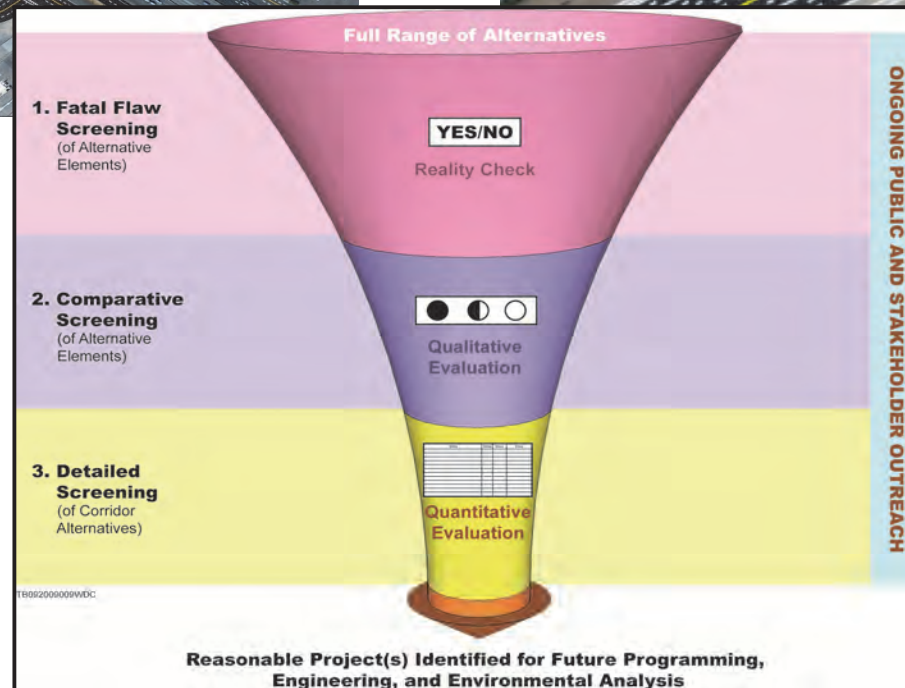
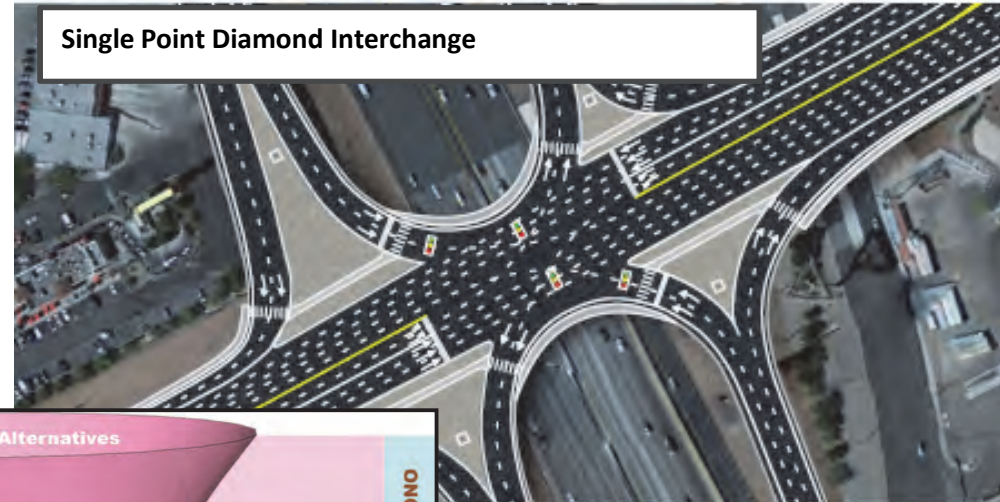
\*The Study limits shown are not finalized and are subject to revision as the study and future selection/screening process are completed.



Diverging Diamond Interchange



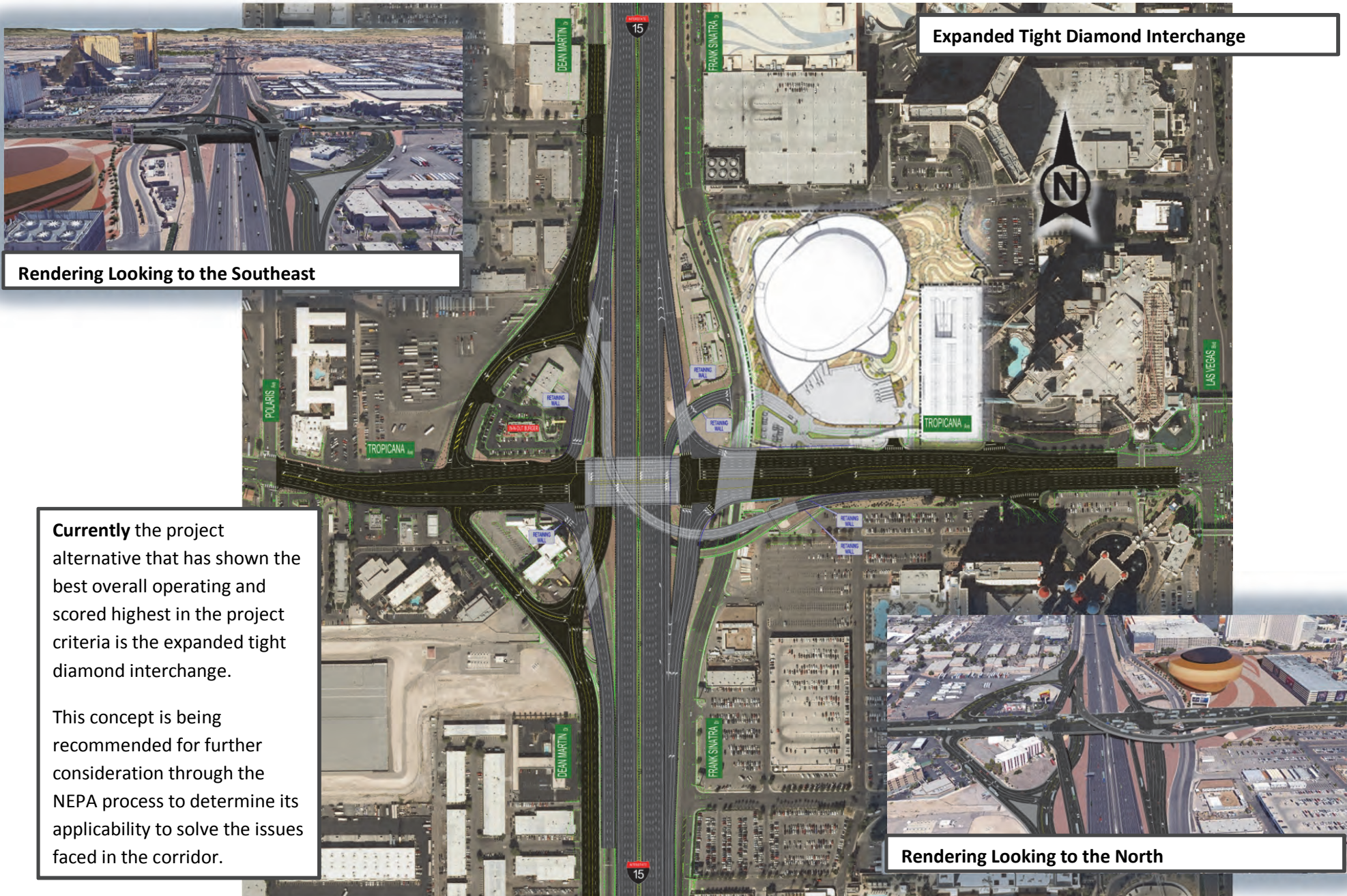
Single Point Diamond Interchange



Multi-tiered screening process

Many different options and concepts have been developed and considered thus far. A multi-tiered screening process has been used to evaluate potential project improvement concepts.

Of the potential concepts considered, a few are depicted on this exhibit.



**Currently** the project alternative that has shown the best overall operating and scored highest in the project criteria is the expanded tight diamond interchange.

This concept is being recommended for further consideration through the NEPA process to determine its applicability to solve the issues faced in the corridor.

### Rendering Looking to the North

### Expanded Tight Diamond Interchange



**Currently** the project alternative that has shown the best overall operating and scored highest in the project criteria is the expanded tight diamond interchange.

This concept is being recommended for further consideration through the NEPA process to determine its applicability to solve the issues faced in the corridor.

Rendering Looking to the East

Expanded Tight Diamond Interchange



**Currently** the project alternative that has shown the best overall operating and scored highest in the project criteria is the expanded tight diamond interchange.

This concept is being recommended for further consideration through the NEPA process to determine its applicability to solve the issues faced in the corridor.

Rendering Looking to the South

Expanded Tight Diamond Interchange



**Currently** the project alternative that has shown the best overall operating and scored highest in the project criteria is the expanded tight diamond interchange.

This concept is being recommended for further consideration through the NEPA process to determine its applicability to solve the issues faced in the corridor.





# I-15 at Tropicana Avenue Interchange

September 29, 2015

Feasibility Study



**zero Fatalities**  
*Drive Safe Nevada*

Nevada Department of Transportation  
Public Information Meeting

All Information Presented is Preliminary and Subject to Revision





# Study Contact Information



## Study-Related Questions:

**Jeff Lerud, P.E.** Senior Project Manager  
Nevada Department Of Transportation  
Phone: (775) 888-7589  
Email: [jlerud@dot.state.nv.us](mailto:jlerud@dot.state.nv.us)

## Environmental-Related Questions:

**Steve M. Cooke, P.E.,** Chief NDOT Environmental Services  
Nevada Department of Transportation  
Phone: (775) 888-7013  
Email: [scooke@dot.state.nv.us](mailto:scooke@dot.state.nv.us)





# Purpose for Tonight's Meeting

- Review the study process
- Learn the purpose and need for the study
- Review the proposed study elements
- Solicit public input regarding the study
- Have your questions answered by experts

**Please hold your questions until after the presentation is completed ~ *Thank you***





# The Study Area



**The Study location** is the I-15 and Tropicana Avenue interchange. It extends from Hacienda to Harmon along I-15, and from Valley View to Las Vegas Boulevard along Tropicana Avenue



**The Study limits** are subject to change based on impacts of individual project solutions



# The Study History

The study was initiated in July of 2014





# The Study Purpose

- Identify needs and evaluate solutions
- Determine impacts to local businesses and provide early and upfront information to those affected
- Identify possible improvements that:
  - Improve pedestrian access and connectivity
  - Improve traffic operations on I-15 and on Tropicana Avenue

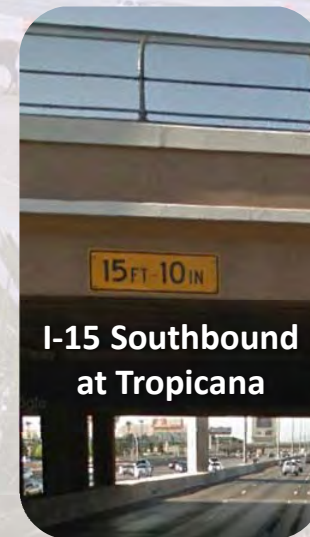
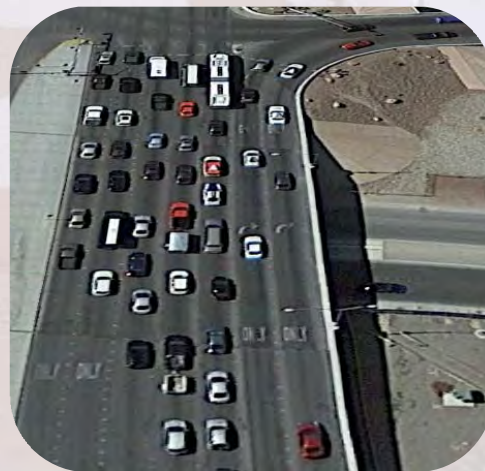


# The Study Need



- Congestion and traffic delays
- Substandard Interchange features
  - Height and width of available opening under the Tropicana bridge
  - Substandard Shoulders
  - Sidewalk only south side.
  - Not ADA Compliant

Tropicana Avenue @ I-15 looking west



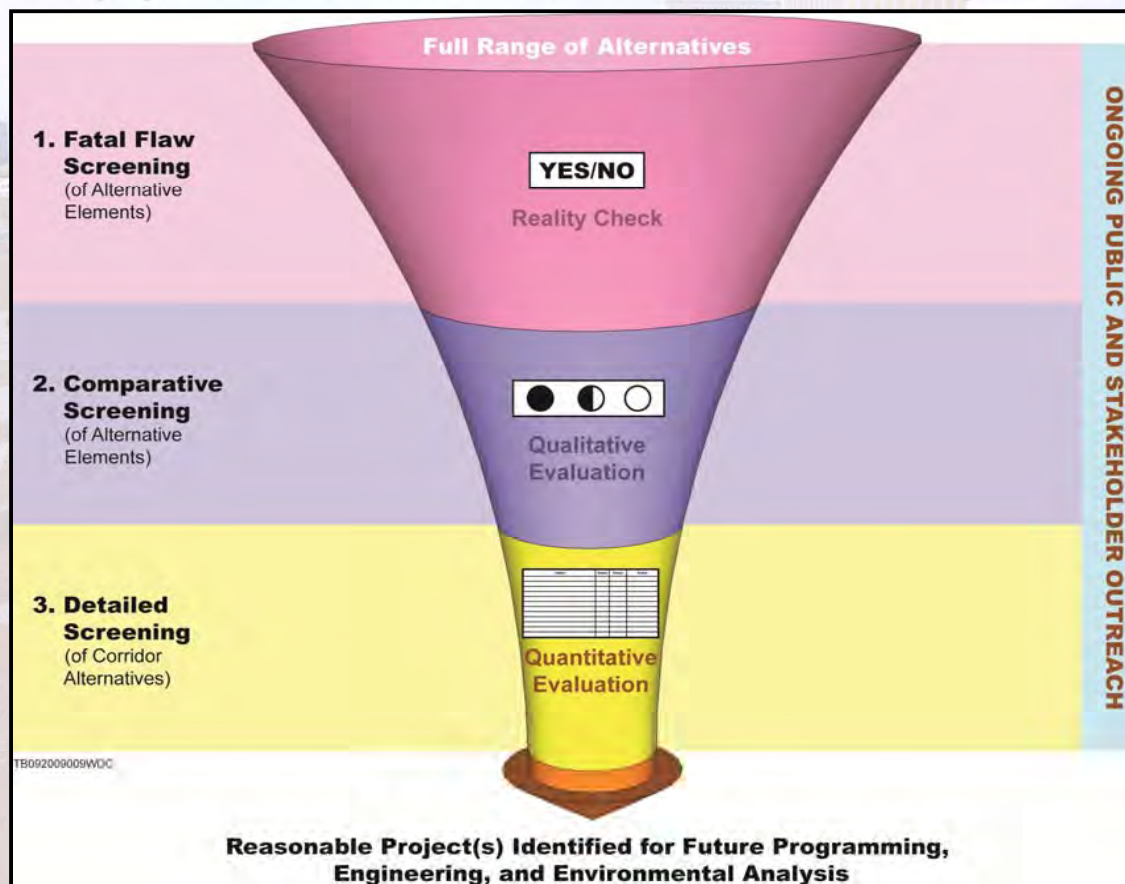


# Study Background



## Study process:

- The Study process has evaluated many concepts.







# Study Background



- **A range of improvements are being considered**
  - Initial phase concepts
    - Low-cost minor improvements
    - Immediate implementation
  - Interim phase concepts
    - Possible re-striping concepts to enhance traffic operations
  - Ultimate concepts
    - Interchange improvements
    - I-15 Improvements



## Study Background continued



### Interchange Improvements:

- Recommended Alternative Maintains a flyover
- Provides triple left turns at all left turning locations
- Provides triple right turns at exit ramp right turns
- Provides dual right turns at entrance ramp right turns
- Grade Separation of Dean Martin and Tropicana

All Information  
Presented is  
Preliminary and  
Subject to  
Revision





LOOKING SOUTH

LOOKING EAST



LOOKING NORTH





# Moving Forward to the Future

## • What's Next?

10/16/2015

Public comments due

November  
2015

Final Study

NEPA Process

Final Design, pending funding

Construction, pending funding

Continued Public involvement  
throughout this process



# We want to hear from you!

## We provide many ways for you to comment

### ➤ Comment Form:

Write your comments on the forms provided and place in comment box tonight

### ➤ Verbal Input:

Give verbal comments to the court reporter  
Give verbal comments via the presentation Q&A

### ➤ Mail the Comment Form:

Take comment forms home, mail it back to address on form by Friday, October 16, 2015

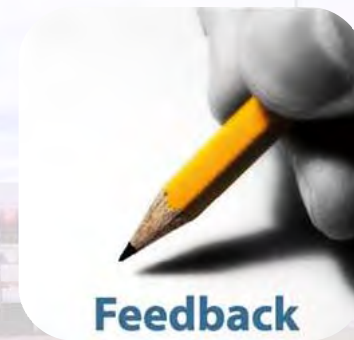
### ➤ Email Comments:



[www.nevadadot.com](http://www.nevadadot.com)

Email comments to [info@dot.state.nv.us](mailto:info@dot.state.nv.us)

Please include I- 15 at Tropicana Ave. Interchange in the subject line





# Open Comment Period Tonight

- Please state your full name and address prior to your question or statement
- Three-minute verbal comment per individual
- A court reporter will be recording the presentation and is available to take comments before and after the presentation







# Thank You!

## I-15 at Tropicana Avenue Interchange Feasibility Study



**zero Fatalities**  
*Drive Safe Nevada*

Nevada Department of Transportation  
Public Information Meeting

September 29, 2015





# PUBLIC INFORMATION MEETING

---

## I-15/Tropicana Interchange Feasibility Study in Clark County, Nevada

**Tuesday, September 29, 2015 • 4 to 7 p.m.**

**Presentation at 5:30 p.m.**

*The Hampton Inn Event Center*

*4975 Dean Martin Drive, Las Vegas, NV*

**BRIAN SANDOVAL**

*GOVERNOR*

**RUDY MALFABON**

*DIRECTOR*

*Nevada Department of Transportation*

*1263 S. Stewart Street, Carson City, NV 89712*



*Traducción disponible en español.  
All information presented is preliminary and subject to revision.*





# WELCOME!



SEPTEMBER 29, 2015

Thank you for attending this Information Meeting regarding the study of the I-15 and Tropicana Avenue interchange in Clark County, Nevada. The Nevada Department of Transportation (NDOT) is studying the existing interchange conditions and is considering multiple solutions to the issues at and in the vicinity of the interchange, its ramps, and connecting roadways. Proposed improvements are currently being developed to address the interchange and corridor issues.

This information meeting is being held in an open-house format from 4 to 7 p.m. Project representatives will be on hand to discuss and answer your questions. There will be a brief project presentation at 5:30 p.m. followed by a short question and answer period from the audience. Before and after the presentation, the meeting will be conducted as an open house format to provide attendees with an opportunity to view displays and individually discuss the project with project representatives.

Your comments may be submitted for public record in writing at the meeting or verbally to a court reporter, who will be available throughout the meeting. In addition to any comments received at the meeting, written or email comments will be accepted through Friday, October 16, 2015.

## WAYS TO GIVE US YOUR COMMENTS:

Your participation and input in this meeting tonight is appreciated. Comments may be submitted in the following ways:

- **TODAY (IN PERSON):** During the open-house, you may make an oral statement to the court reporter that will be available throughout the meeting.
- **TODAY (IN WRITING):** You may fill out the comment form attached to this handout and deposit it in the comment box or give the completed form to one of the project representatives.
- **BY MAIL:** You may write a letter or mail your completed comment form and any exhibits; these will become part of the official public record for the project. Mail your comments to: Jeff Lerud, Project Manager, Nevada Department of Transportation, 1263 S. Stewart St., Carson City, NV 89712.
- **BY E-MAIL:** E-mail your comments to [info@dot.state.nv.us](mailto:info@dot.state.nv.us). Please reference this project in the subject line "I-15/Trop". E-mail comments will also be accepted through Friday, October 16, 2015.

Thank you for attending this information meeting and for giving us your comments.

Sincerely,

Jeff Lerud, P.E.  
Senior Project Manager, NDOT



[www.nevadadot.com](http://www.nevadadot.com)



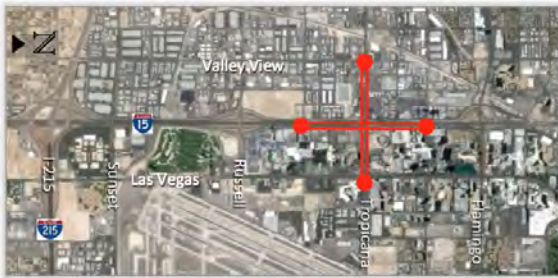
# PUBLIC INFORMATION MEETING

## I-15/Tropicana Interchange Feasibility Study Clark County, Nevada



Thank you for attending this Public Information Meeting for the I-15/Tropicana Ave. Interchange Feasibility Study, focusing on the Tropicana Interchange with I-15. See Figure A.

FIGURE A | STUDY AREA



The Nevada Department of Transportation (NDOT), in cooperation with the Federal Highway Administration (FHWA), is currently studying potential alternatives and improvements to the interchange and other enhancements to address traffic movement and safety concerns within the study area.

Tonight's hearing will be held from 4 p.m. to 7 p.m. At 5:30 p.m., project representatives will give a brief presentation followed by a short question and answer period. Before and after the presentation, the meeting will be held in an open house format to provide you the opportunity to view the displays and discuss the potential improvements with project staff.

### PROJECT DESCRIPTION

To make traffic move through the interchange more efficiently, and improve safety for pedestrians, NDOT is evaluating many possible improvements:

- Expand the effectiveness the I-15/Tropicana on and off ramps.
- Create triple left turns at the interchange signals.
- Add a lane to the northbound frontage (CD) road entrance to I-15.
- Add a bridge for Dean Martin to pass under Tropicana.
- Replacing the existing Tropicana Avenue over I-15 bridge to meet minimum height and width clearances.
- Replacing the existing southbound to eastbound flyover ramp bridge to meet height and width clearances.



Utilizing a Planning and Environmental Linkages Approach, NDOT will begin the formal environmental process upon the conclusion of this feasibility study. This process will result in faster delivery of the needed improvements. The environmental study process is anticipated to begin in early 2016.

NDOT is also studying potential initial and interim improvements to improve safety as part of its maintenance program. These initial improvements could begin construction as early as 2016.

### THE PROJECT DELIVERY PROCESS

We are currently in the Preliminary Project Development & Planning phase of the process.



All information presented is preliminary and subject to revision.



[www.nevadadot.com](http://www.nevadadot.com)



# PUBLIC INFORMATION MEETING

## I-15/Tropicana Interchange Feasibility Study Clark County, Nevada



### PURPOSE

The purpose of this study is to:

- Improve the safety of the interchange, on I-15 in the vicinity of the interchange, and on Tropicana Avenue in the vicinity of the interchange.
- Improve the flow of traffic on I-15 and on Tropicana Avenue as well as on the interchange ramps and intersections. This means drivers will be able to get to their destination faster.
- Identify potential impacts to local businesses and resort destinations and provide early and upfront information to those affected.
- Identify possible improvements that meet the goals and objectives above and prepare them to be carried forward to the environmental process.

### NEED

The need for improvements in and around the I-15/Tropicana interchange is based on a combination of factors related to:

- Safety – There were 989 crashes along Tropicana Avenue from Valley View to Las Vegas Boulevard over a 3-year period (2010- 2013). Of the 989 total crashes, over half were accidents at the interchange ramp intersections.
- Roadway Deficiencies
  - Congestion and delays are common at several locations in the study area. The northbound frontage road (CD) entrance to I-15 causes delay on the CD, the Tropicana exit ramp, and on I-15 northbound.
  - Bridge Clearances – The existing clearance under the Tropicana bridge is 15'-10", eight inches less than the standard minimum clearance. The width available under the bridge in the northbound and southbound directions is too narrow to provide ramp improvements, nor is it wide enough for future planned improvements on I-15.
- Traffic Demand – The number of vehicles on I-15 near the Tropicana overpass is expected to increase from 245,000 vehicles per day in 2014 to 295,000 vehicles per day in 2035. They're expected to increase 48% on Tropicana as well.
- Capacity
  - Traffic volume is not the only factor that indicates roadway congestion. Level of service (LOS) is a qualitative measure of congestion on a road as perceived by motorists. LOS characterizes the conditions on the facility in terms of speed and travel time, freedom to maneuver, traffic interruptions, and comfort and convenience. LOS is designated from A to F, with LOS A representing free-flow traffic and LOS F gridlock conditions.
  - LOS D or better is the targeted LOS for facilities such as the I-15 freeway and CD roads. For freeway speeds at a minimum of 50 mph, LOS E or worse (LOS F) is considered unacceptable. For intersections, an overall intersection LOS of D or better is desirable.
  - If no improvements are made to the interchange by 2035, increased traffic will cause I-15 and Tropicana to operate at an unacceptable LOS F, or worse.

### PROJECT HISTORY

The I-15 and Tropicana Avenue interchange has been a key access location for both sides of I-15 ever since the interstate was constructed in the 1960s. As of 2014, several major projects have changed the interchange and surrounding environment dramatically. Initially the only access to McCarran Airport from the I-15, the interchange is now the gateway to the south strip and is a key component of east-west valley travel. Dean Martin Drive and Frank Sinatra Drive have emerged as local access roadways next to I-15, and serve to distribute traffic to local businesses as well as world class casinos and resorts.

NDOT has evaluated transportation challenges in the project area multiple times, however, Tropicana has acted as a boundary point for many of the previous studies. This meeting serves as the first public meeting for NDOT's proposed project at the interchange. Your input will be key in the development and selection of the final alternatives.

### WAYS TO COMMENT (COMMENTS ARE DUE BY FRIDAY, OCTOBER 16, 2015)

- Court reporter or comment form during tonight's public meeting.
- Comments made during the audience comment period following tonight's presentation will also be recorded.
- Mail: Jeff Lerud, P.E., Project Manager, NDOT, 1263 South Stewart Street, Carson, City, Nevada 89712, (775) 888-7013.
- E-mail: [info@dot.state.nv.us](mailto:info@dot.state.nv.us). Please reference the project in the subject line.

*All information presented is preliminary  
and subject to revision.*



[www.nevadadot.com](http://www.nevadadot.com)







# COMMENT FORM

Nevada Department of Transportation Public Information Meeting for  
I-15/Tropicana Interchange Feasibility Study  
September 29, 2015

▪ *Please Print Clearly* ▪

Date: \_\_\_\_\_

Name: \_\_\_\_\_

Address: \_\_\_\_\_

City: \_\_\_\_\_ State: \_\_\_\_\_ ZIP Code: \_\_\_\_\_

Phone (Day): \_\_\_\_\_ Phone (Evening): \_\_\_\_\_

E-mail Address: \_\_\_\_\_

Was the information presented easy to understand?  YES  NO

Would you like a representative to contact you concerning your question or comment?  YES  NO

**Comment/Question:** \_\_\_\_\_

\_\_\_\_\_  
\_\_\_\_\_  
\_\_\_\_\_  
\_\_\_\_\_  
\_\_\_\_\_  
\_\_\_\_\_  
\_\_\_\_\_  
\_\_\_\_\_

**Comments will be accepted through 5 p.m. Friday, October 16, 2015.**

Please mail to: Jeff Lerud, NDOT, Project Manager 1263 S. Stewart St., Carson City, NV 89712

Thank you for your time and interest in this study

**NDOT USE ONLY:**  
Date Addressed/Answered: \_\_\_\_\_  
Comments: \_\_\_\_\_  
Public Outreach Team Member: \_\_\_\_\_





# FORMULARIO DE COMENTARIOS

Nevada Departamento de transporte audiencia pública para  
I-15/Tropicana Estudio de viabilidad de Intercambio  
29 de septiembre de 2015

▪ *Por favor imprima claramente* ▪

Fecha: \_\_\_\_\_

Nombre : \_\_\_\_\_

Dirección : \_\_\_\_\_

Ciudad : \_\_\_\_\_ Provincia/ Estado : \_\_\_\_\_ Código postal: \_\_\_\_\_

Teléfono (día): \_\_\_\_\_ Teléfono (tarde): \_\_\_\_\_

Dirección de correo electrónico : \_\_\_\_\_

¿Se presentó la información fácil de entender?  Si  NO

¿Quieres un representante para que en contacto con usted con respecto a su pregunta o comentario?  Si  NO

**Comentario/Pregunta:** \_\_\_\_\_

\_\_\_\_\_  
\_\_\_\_\_  
\_\_\_\_\_  
\_\_\_\_\_  
\_\_\_\_\_  
\_\_\_\_\_  
\_\_\_\_\_  
\_\_\_\_\_  
\_\_\_\_\_

**Se aceptarán comentarios a través de 17 viernes, 16 de octubre de 2015.**

Envíe por correo a: Jeff Lerud, NDOT, Project Manager

1263 S. Stewart St., Carson City, NV 89712

Gracias por su tiempo e interés en este proyecto

**NDOT USE ONLY:**

Date Addressed/Answered: \_\_\_\_\_

Comments: \_\_\_\_\_

Public Outreach Team Member: \_\_\_\_\_