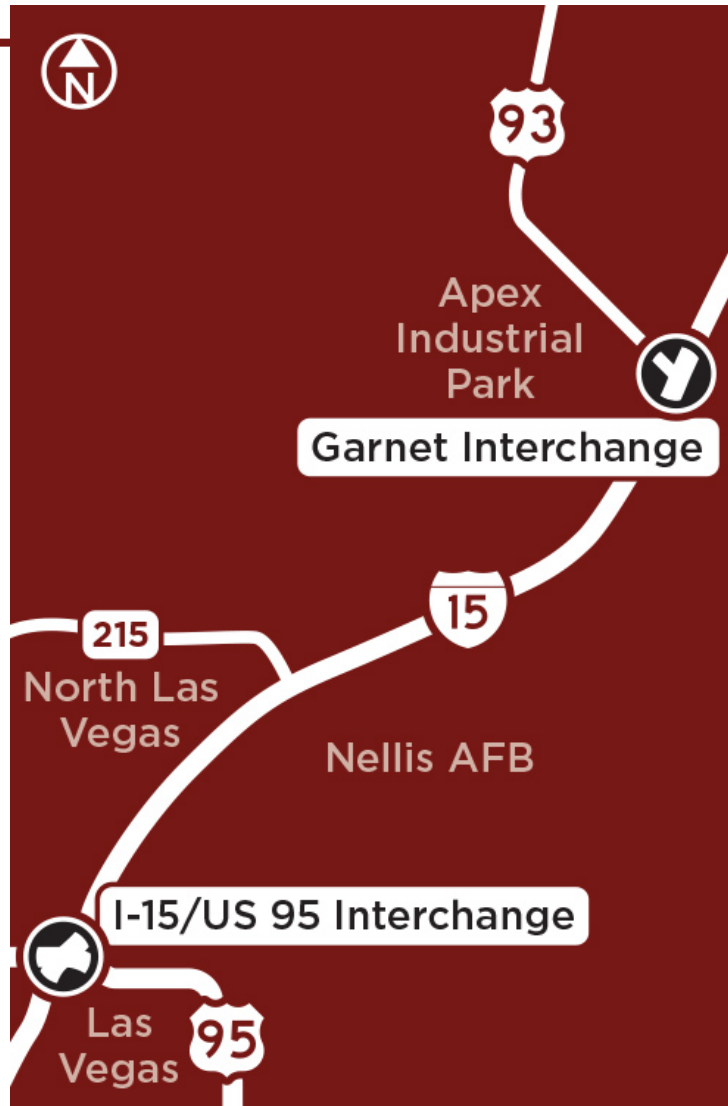


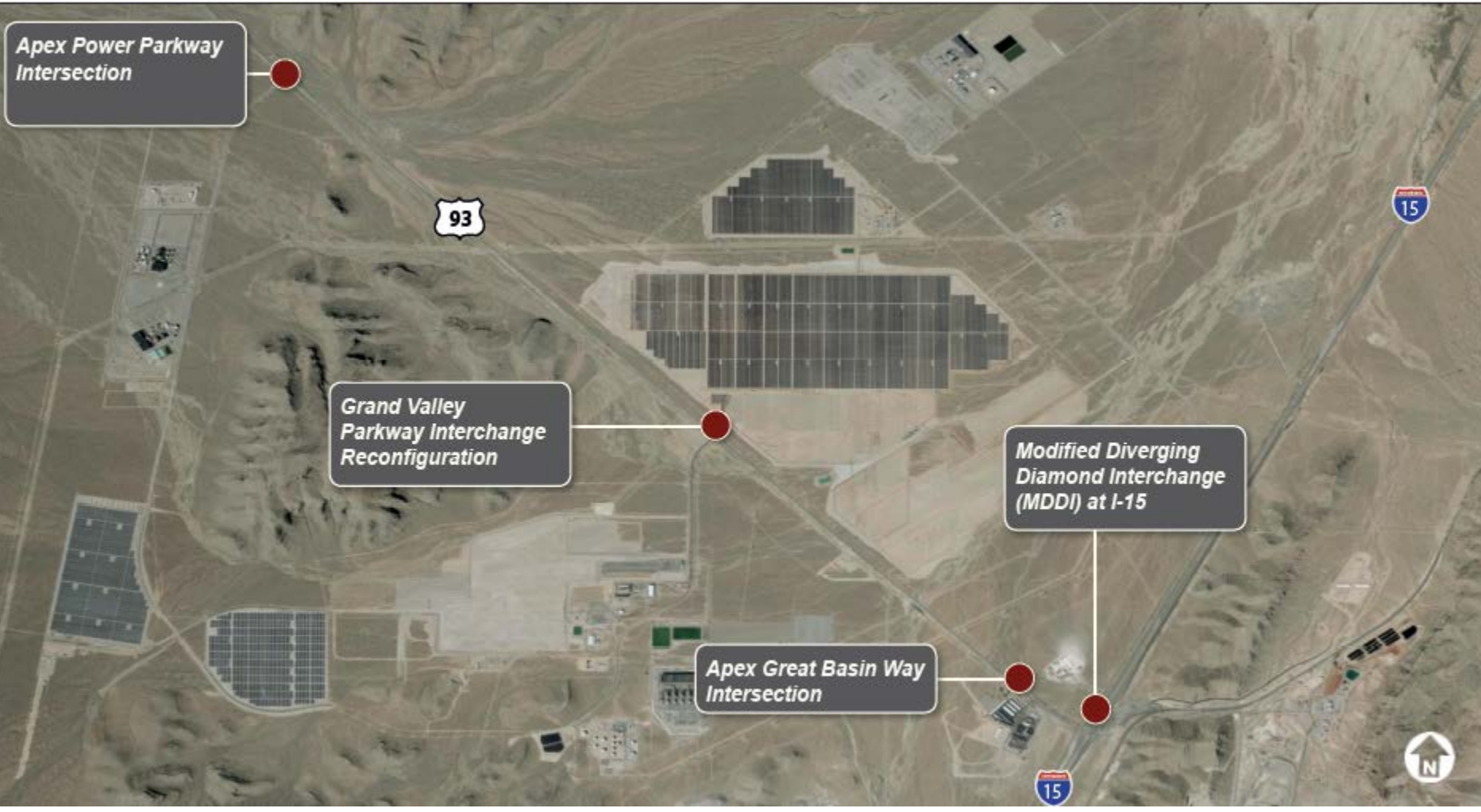


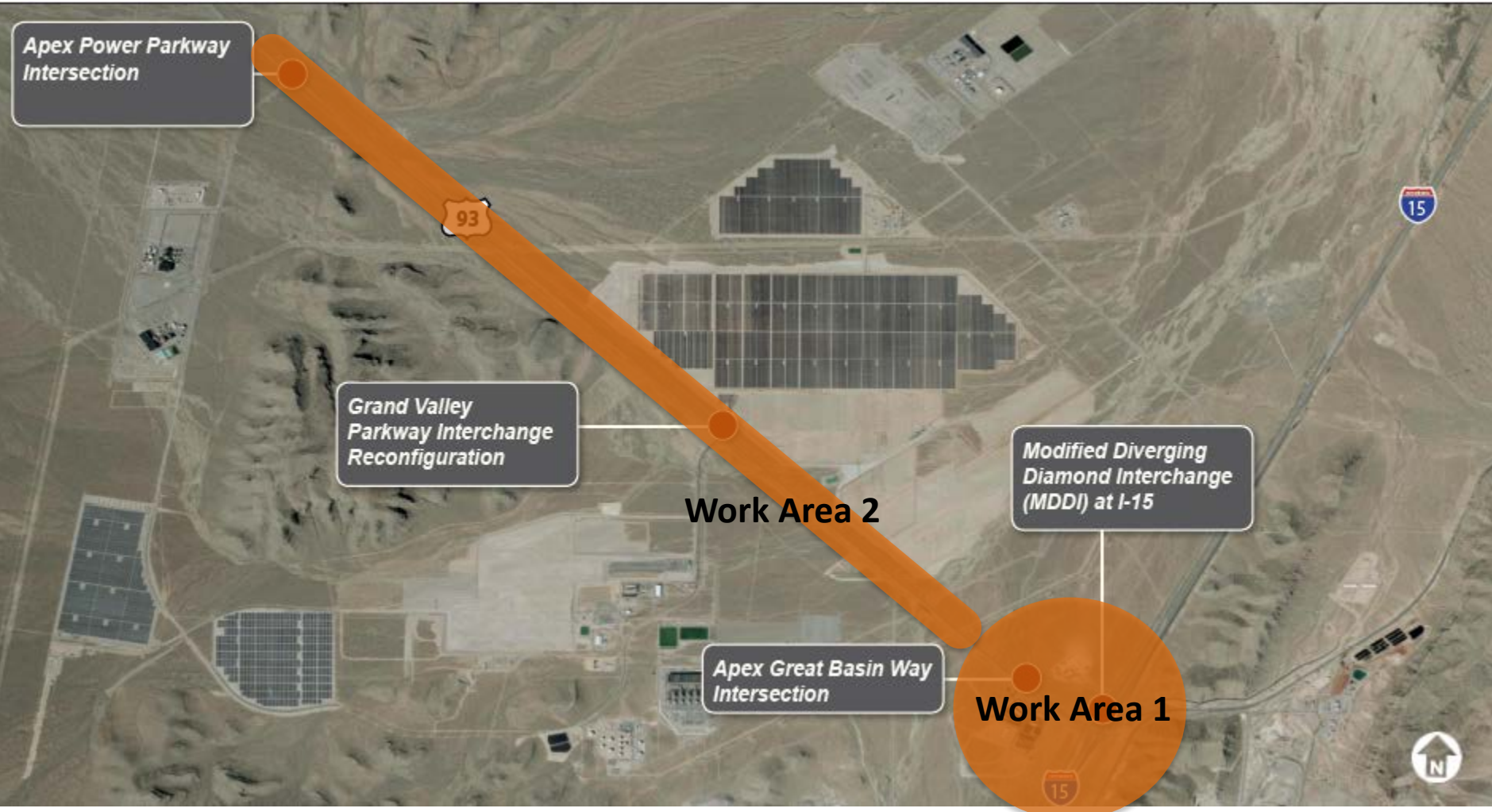
**Construction
Working Group**
March 12, 2018



Project Location

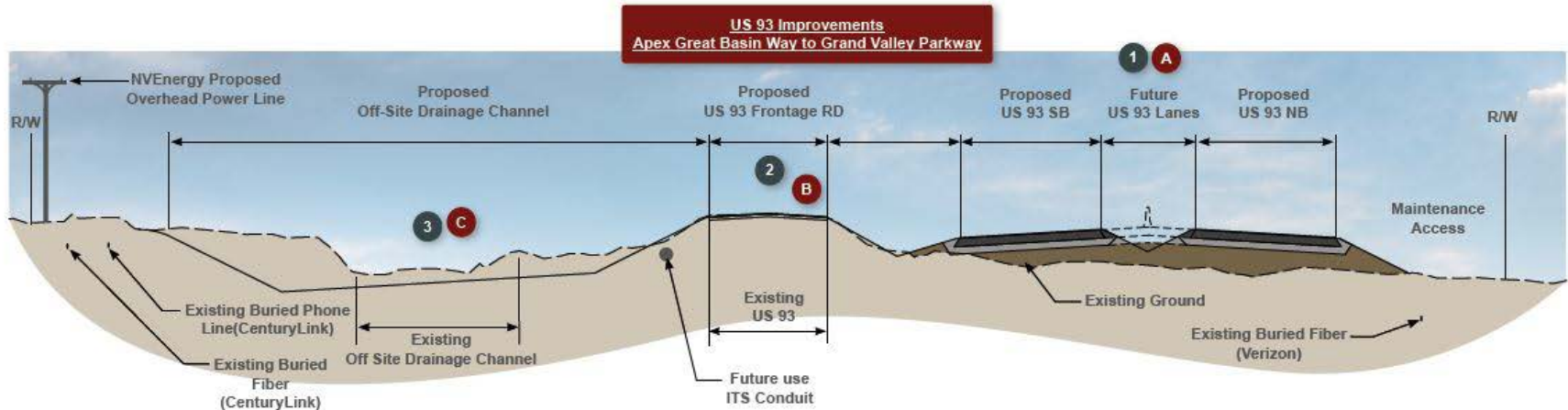


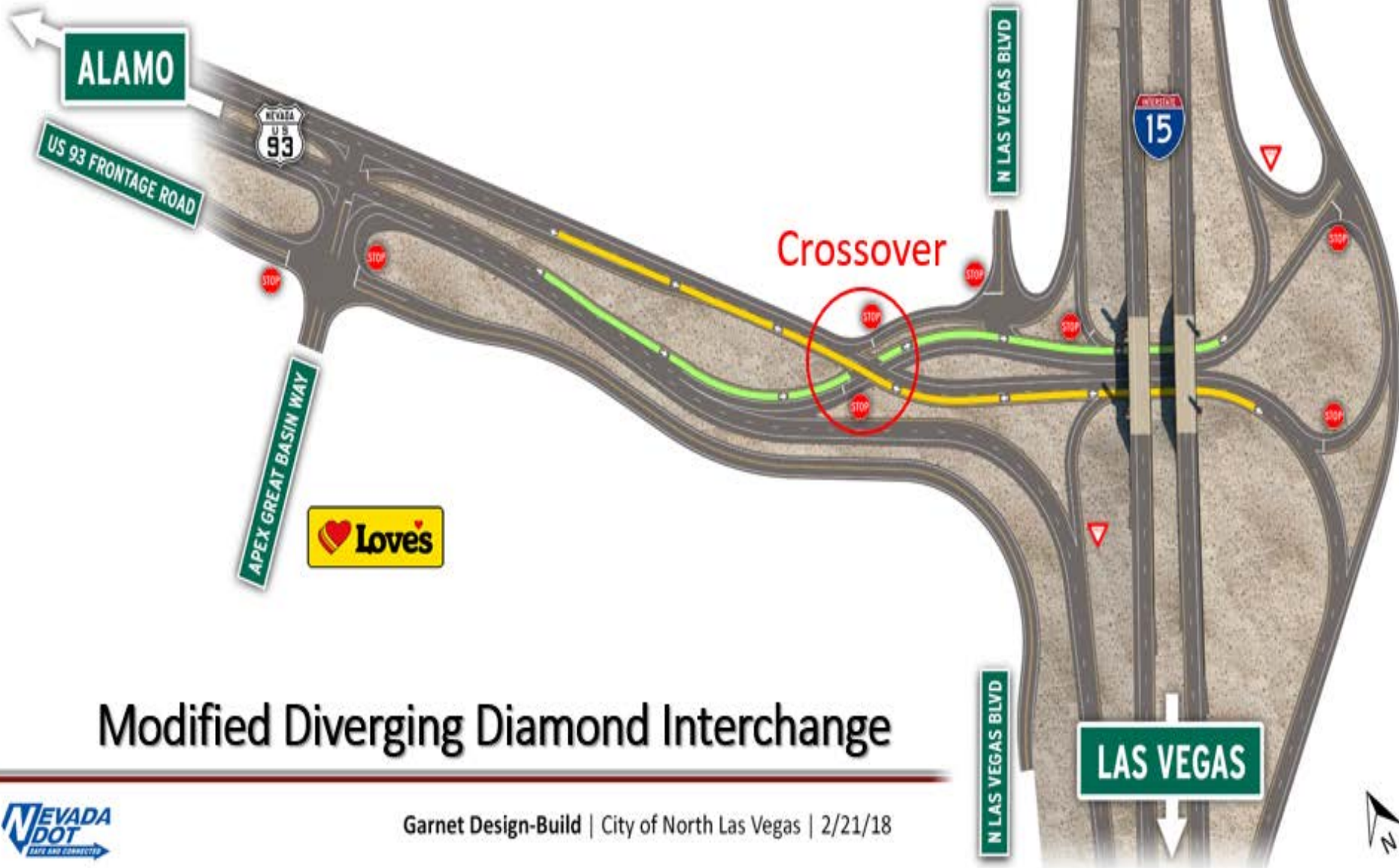




- Delivering a safe project for the traveling public and workers by allowing significant portions of the project to be constructed away from active travel lanes.

FIGURE 8: US 93 TYPICAL SECTIONS

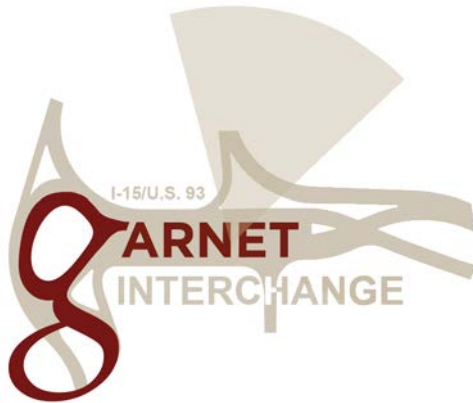




Modified Diverging Diamond Interchange

Image courtesy of the Nevada State Mapping Advisory Committee
© 2016 Microsoft Corporation





DESIGN COMPLETE
80%



CONSTRUCTION COMPLETE
5%

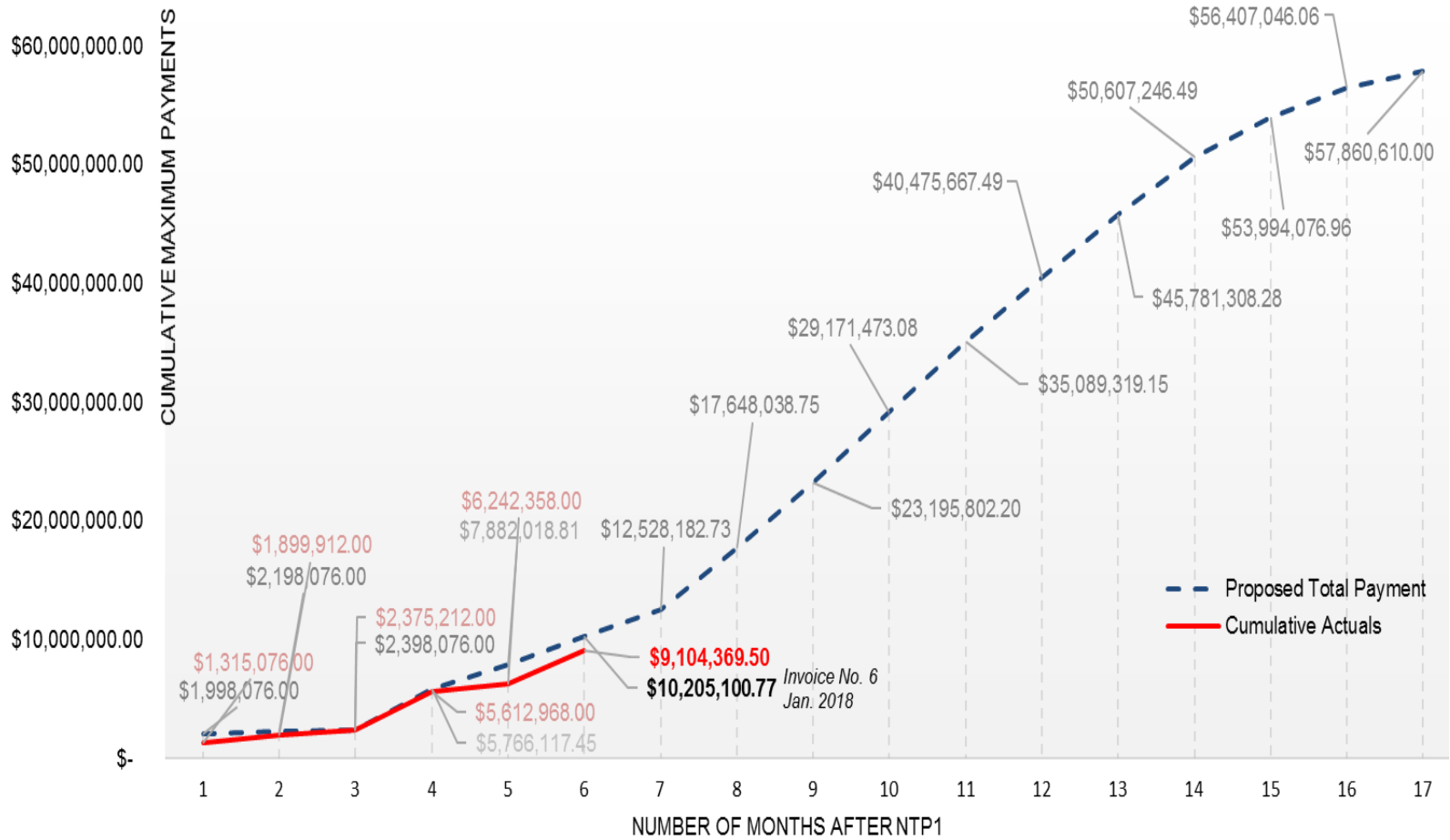


SCHEDULE COMPLETE
40%

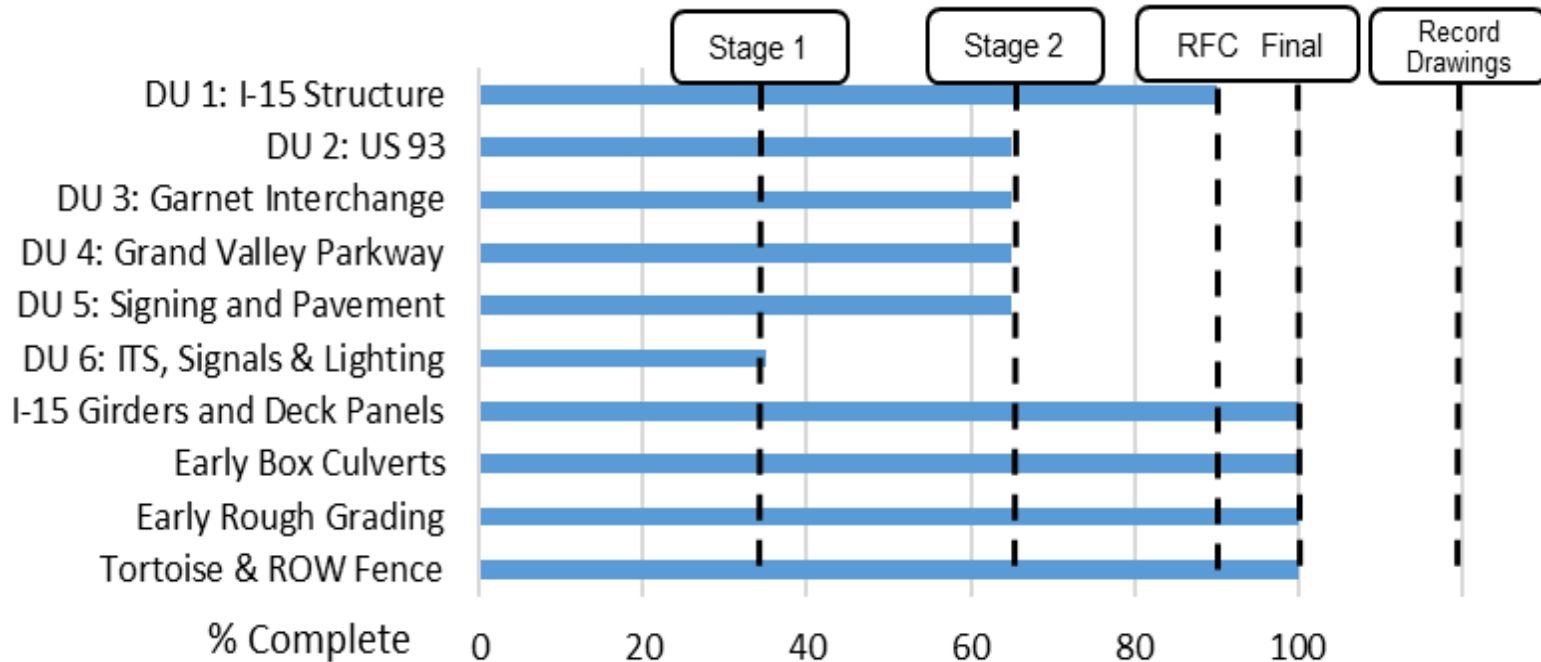
TOTAL CONTRACT AMOUNT
\$57.8 M

SPENT TO DATE
\$9.1 M

Cost and Schedule



Design: 75% Complete

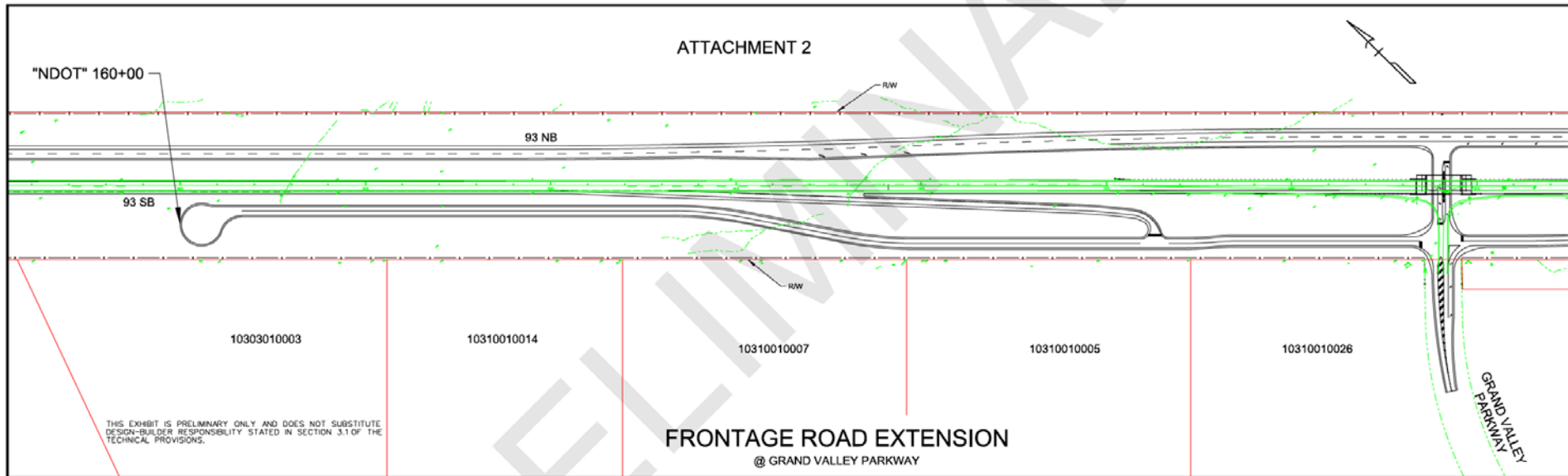


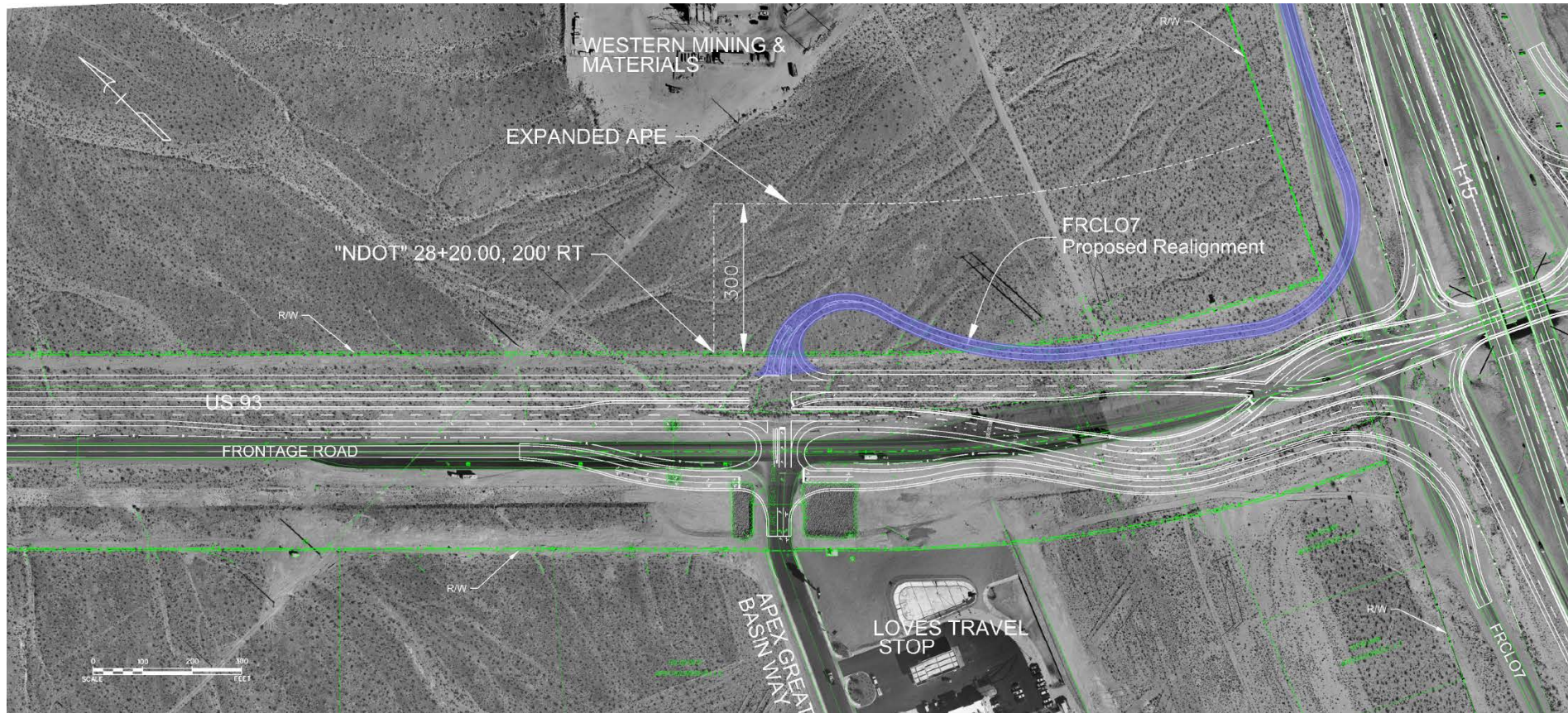
Construction: 5% Complete

- 2 miles of NB US-93 to subgrade
- GVP shoefly last week/this week
- Temp soil nail wall at I-15 bridges next week

Change Order	Description	Cost	Status	Initiated
01	Frontage Road Extension	\$912,957.00	Executed	NDOT
02	FRCL07 Re-route	\$320,491.72	Executed	NDOT
03	VECP Culvert Elimination	(\$181,216.22)	Prelim - Accept	Ames
04	Construction Traffic Control Measures for US-93	\$20-60K	Negotiation	NDOT
05	CNLV Culvert Additions	???	Informal Discussions	CNLV

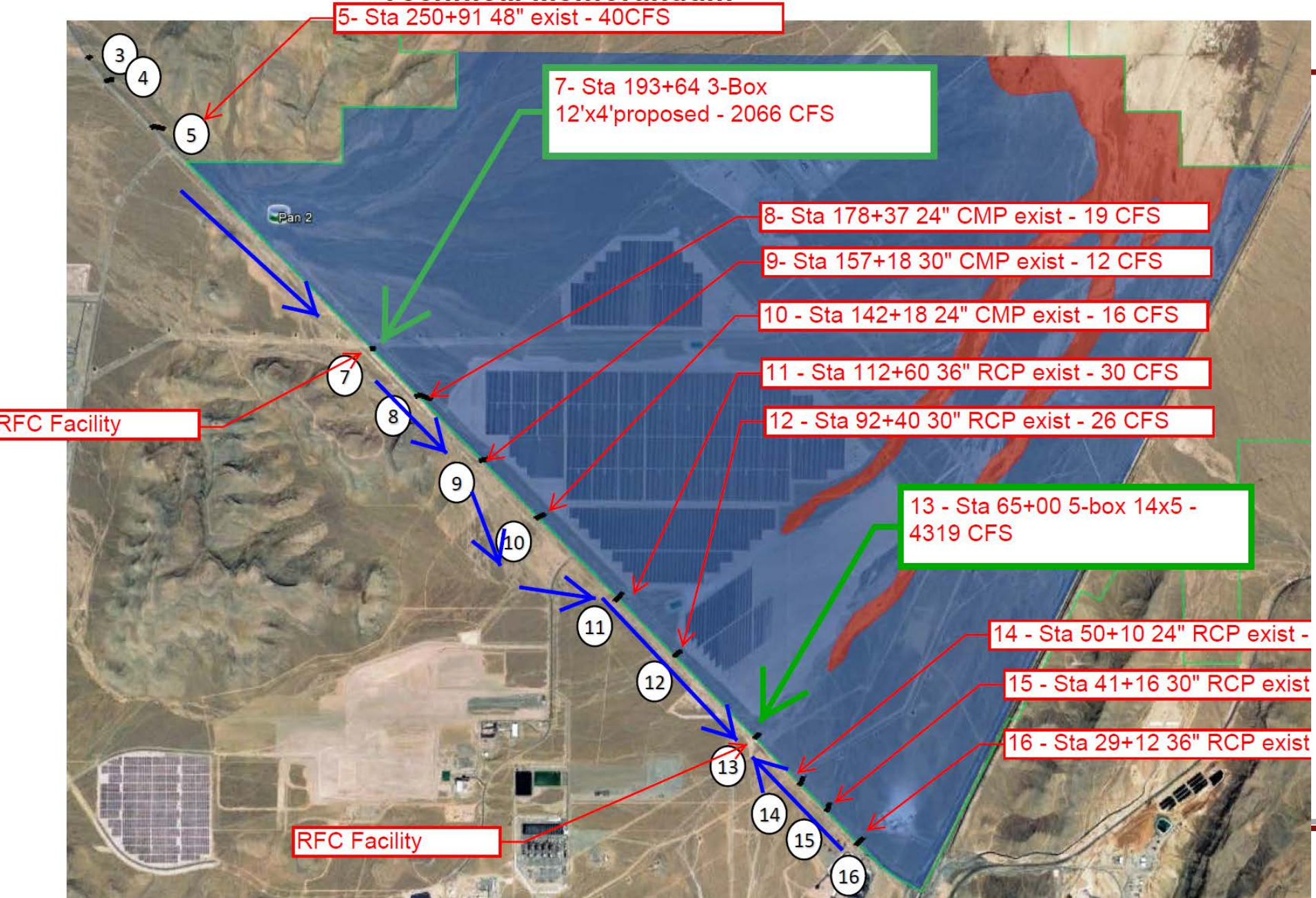
Change Order #1







VFCP





Thank You!



**Construction
Working Group**
December 11, 2017

