

Landscape & Aesthetics Corridor Plan Endorsement



CORRIDOR PLAN

*Central US 95, West US 6, and Central US 50
landscape and aesthetics corridor plan*



INCLUDES US 95 FROM THE CLARK COUNTY LINE WEST OF INDIAN SPRINGS NORTH TO I 50 AT TRINITY, US 6 FROM THE CALIFORNIA STATE LINE EAST TO WARM SPRINGS, US 50 FROM SIX MILE CANYON ROAD NEAR DAYTON EAST TO NEW PASS SUMMIT, ALT 95 THROUGH YERINGTON AND ALT 50

DESIGN WORKSHOP

- PLACES
- Sand County Studios
- JW Zunino & Associates
- CH2MHill

Purpose of Briefing

- Present a summary of the themes, opportunities, and design guidelines of the *Corridor Plan* to agencies and organizations
- Obtain endorsement of the *Corridor Plan* from your respective agency or organization

Endorsement Means...

- Agree in principle with the landscape and aesthetic opportunities identified within your jurisdiction; including the design objectives and guidelines



Central US 95, West US 6, and Central US 50 landscape and aesthetics corridor plan

DESIGN WORKSHOP
Sand County Studios
JW Zunino & Associates
PLACES
CH2MHILL

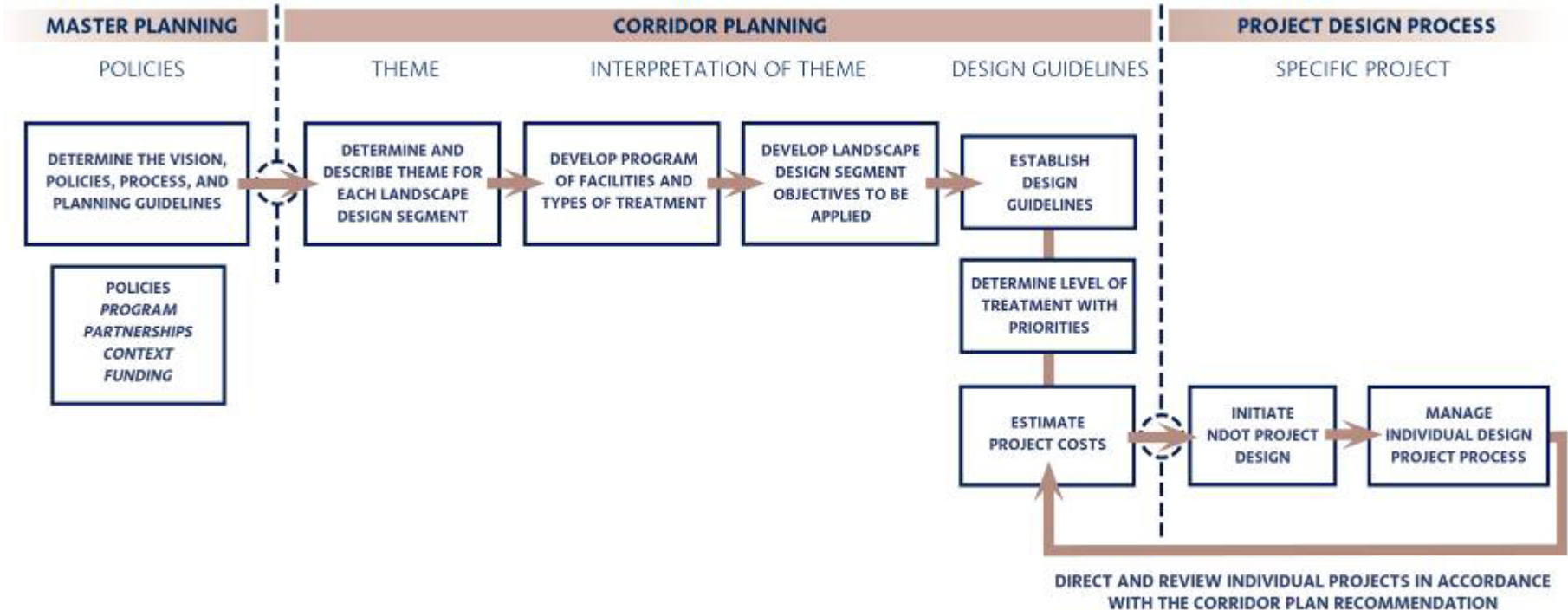


CORRIDOR PLAN

INCLUDES US 95 FROM THE CLARK COUNTY LINE WEST OF INDIAN SPRINGS NORTH TO I-80 AT TRINITY, US 6 FROM THE CALIFORNIA STATE LINE EAST TO WARM SPRINGS, US 50 FROM SIX MILE CANYON ROAD NEAR DAYTON EAST TO NEW PASS SUMMIT, ALT 95 THROUGH YERINGTON AND ALT 50.

Purpose of Corridor Plans

- Provides a design management tool for NDOT and creates a new method for NDOT to approach projects
- Sets the context for future projects and provides design themes and levels of treatment for each corridor
- Establishes specific, prioritized opportunities for improvements
- Provides guidelines for materials and plant palettes, highway structures, construction practices, and maintenance practices
- Provides planning level cost goals
- Involves government agencies, organizations, and public in the planning process



What do the Corridor Plans Include?

- **Elements of Landscape & Aesthetics**

- Levels of Landscape Types and Treatments
- Nevada Place Name Sign Program
- Road Services
- Native Wildflowers
- Invasive and Noxious Weed Control
- Outdoor Advertising
- Scenic Highway Designation

- **Landscape Design Segments**

Central US 95, West US 6, and West US 50 Corridor

- Mohave Desert Vista
- Silver Legends
- Great Basin Oasis
- Pony Express Passage

- **Design Guidelines**

- **Priority Projects**



Central US 95, West US 6, and Central US 50 landscape and aesthetics corridor plan

DESIGN WORKSHOP
Sand County Studios
JW Zunino & Associates
PLACES
CH2MHILL



CORRIDOR PLAN

INCLUDES US 95 FROM THE CLARK COUNTY LINE WEST OF INDIAN SPRINGS NORTH TO I-80 AT TRINITY, US 6 FROM THE CALIFORNIA STATE LINE EAST TO WARM SPRINGS, US 50 FROM SIX MILE CANYON ROAD NEAR DAYTON EAST TO NEW PASS SUMMIT, ALT 95 THROUGH YERINGTON AND ALT 50.

Levels of Landscape Treatment

Softscape Types and Hardscape Types

- Defined by a hierarchy of treatment levels
- Used separately or in combination to establish design character within the corridor



Example of ground treatment



Example of focal treatment



Examples of regionally adapted treatment

STRUCTURES AND HARDSCAPE TYPES AND TREATMENTS

SOFTSCAPE TYPES AND TREATMENTS

		STANDARD	ACCENTUATED	FOCAL	LANDMARK
GROUND TREATMENT					
NATIVE PLANT REVEGETATION					
ENHANCED NATIVE					
REGIONALLY ADAPTED					
REGIONAL ORNAMENTAL					

Central US 95, West US 6, and Central US 50 landscape and aesthetics corridor plan

CORRIDOR PLAN

INCLUDES US 95 FROM THE CLARK COUNTY LINE WEST OF INDIAN SPRINGS NORTH TO I-80 AT TRINITY, US 6 FROM THE CALIFORNIA STATE LINE EAST TO WARM SPRINGS, US 50 FROM SIX MILE CANYON ROAD NEAR DAYTON EAST TO NEW PASS SUMMIT, ALT 95 THROUGH YERINGTON AND ALT 50.

DESIGN WORKSHOP
Sand County Studios
JW Zunino & Associates
PLACES
CH2MHILL



Landscape Design Segments

Provides a theme for design features based on place specific features- environment, culture, and history



LEGEND

- A MOJAVE DESERT VISTA LANDSCAPE DESIGN SEGMENT
- A1 Death Valley Sub-Segment
-A2 Spring Mountains Sub-Segment
- B SILVER LEGENDS LANDSCAPE DESIGN SEGMENT
- B1 Hawthorne Sub-Segment
- C GREAT BASIN OASIS LANDSCAPE DESIGN SEGMENT
- D PONY EXPRESS PASSAGE LANDSCAPE DESIGN SEGMENT

SCALE: 1 inch equals 15 miles

NORTH

MOJAVE DESERT VISTA LANDSCAPE DESIGN SEGMENT

DEATH VALLEY SUB-SEGMENT

SPRING MOUNTAINS SUB-SEGMENT

Note: Mojave Desert Vista Landscape Design Segment and Spring Mountain Sub-Segment are continued in the Southern US 95 and US 93 Landscape and Aesthetics Corridor Plan

Central US 95, West US 6, and Central US 50 landscape and aesthetics corridor plan

CORRIDOR PLAN

INCLUDES US 95 FROM THE CLARK COUNTY LINE WEST OF INDIAN SPRINGS NORTH TO I-80 AT TRINITY, US 6 FROM THE CALIFORNIA STATE LINE EAST TO WARM SPRINGS, US 50 FROM SIX MILE CANYON ROAD NEAR DAYTON EAST TO NEW PASS SUMMIT, ALT 95 THROUGH YERINGTON AND ALT 50.

DESIGN WORKSHOP
 Sand County Studios
 JW Zunino & Associates
 PLACES
 CH2MHILL



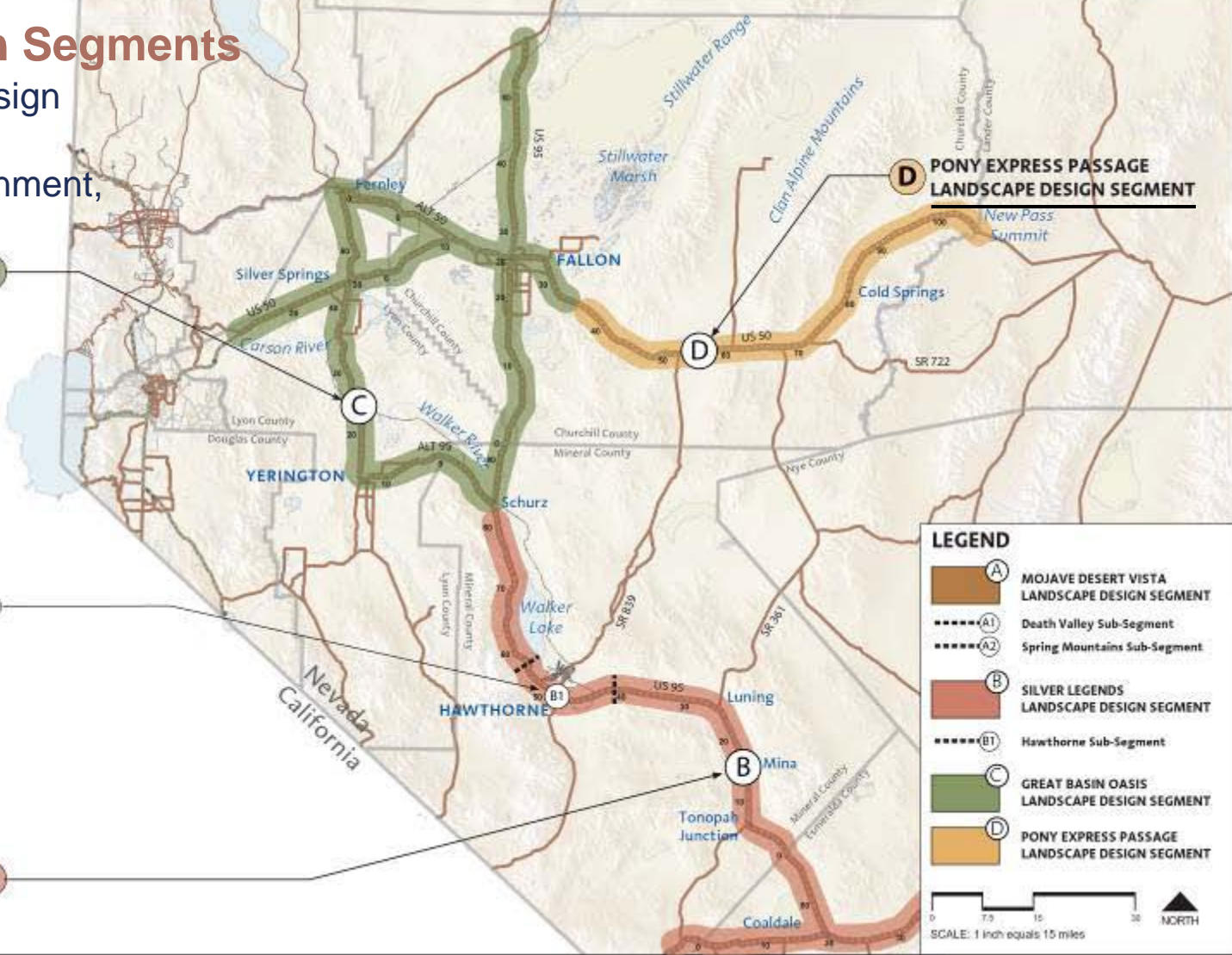
Landscape Design Segments

Provides a theme for design features based on place specific features- environment, culture, and history

GREAT BASIN OASIS LANDSCAPE DESIGN SEGMENT **C**

HAWTHORNE SUB-SEGMENT **B1**

SILVER LEGENDS LANDSCAPE DESIGN SEGMENT **B**



Central US 95, West US 6, and Central US 50 landscape and aesthetics corridor plan

CORRIDOR PLAN

INCLUDES US 95 FROM THE CLARK COUNTY LINE WEST OF INDIAN SPRINGS NORTH TO I-80 AT TRINITY, US 6 FROM THE CALIFORNIA STATE LINE EAST TO WARM SPRINGS, US 50 FROM SIX MILE CANYON ROAD NEAR DAYTON EAST TO NEW PASS SUMMIT, ALT 95 THROUGH YERINGTON AND ALT 50.

DESIGN WORKSHOP
 Sand County Studios
 JW Zunino & Associates
 PLACES
 CH2MHILL



Design Guidelines

- Provide a framework for improving landscape and aesthetics.
- Provide recommendations as to how projects may be designed to meet the objectives of each Landscape Design Segment.
- Three categories:
 - Design Process Guidelines
 - Integrate landscape and aesthetics at the onset of planning, design, and engineering of all highway projects.
 - Community and Urban Context Guidelines
 - Improvement projects are initiated and advanced by the community. NDOT understands the need for flexibility within communities to allow them to achieve their vision.
 - Highway Facilities Guidelines
 - Primarily NDOT's responsibilities



Central US 95, West US 6, and Central US 50 landscape and aesthetics corridor plan

DESIGN WORKSHOP
Sand County Studios
JW Zunino & Associates
PLACES
CH2MHILL



CORRIDOR PLAN

INCLUDES US 95 FROM THE CLARK COUNTY LINE WEST OF INDIAN SPRINGS NORTH TO I-80 AT TRINITY, US 6 FROM THE CALIFORNIA STATE LINE EAST TO WARM SPRINGS, US 50 FROM SIX MILE CANYON ROAD NEAR DAYTON EAST TO NEW PASS SUMMIT, ALT 95 THROUGH YERINGTON AND ALT 50.

Design Guidelines

Highway Facilities Guidelines

Primarily NDOT's responsibilities, including:

- Welcome Centers and Non-interstate Statewide Gateways
- Rest Areas, Viewpoints, and Pull-offs
- Transportation Art and Signage
- Color Palette Applications
- Roadway Design, Medians, and Pedestrian Crossings
- Non-motorized Transportation Systems
- Bridges
- Noise Reduction and Walls
- Concrete Barriers and Guard Rails
- Lighting and Fencing
- Grading and Retaining Walls
- Rock Cut and Excavation
- Drainage and Erosion Control
- Water Harvesting and Irrigation
- Softscape Types and Treatments
- Wildlife Crossings and Protection
- Construction Practices
- Maintenance Facilities and Practices
- Sustainable Highway Environments



BASE COLORS



ACCENT COLORS



Use a uniform, consistent color palette.

Central US 95, West US 6, and Central US 50 landscape and aesthetics corridor plan

DESIGN WORKSHOP
Sand County Studios
JW Zunino & Associates
PLACES
CH2MHILL



CORRIDOR PLAN

INCLUDES US 95 FROM THE CLARK COUNTY LINE WEST OF INDIAN SPRINGS NORTH TO I-80 AT TRINITY, US 6 FROM THE CALIFORNIA STATE LINE EAST TO WARM SPRINGS, US 50 FROM SIX MILE CANYON ROAD NEAR DAYTON EAST TO NEW PASS SUMMIT, ALT 95 THROUGH YERINGTON AND ALT 50.

Priority Projects

Priority Projects

- Priority levels assigned to projects within each Landscape Design Segment
 - High priority projects are highly visible and immediately contribute significant visual quality, or they are projects that are already in progress
- Flexibility allows for projects designated with a lower priority to become a higher priority if a community wants to move forward with their own funding commitment



Central US 95, West US 6, and Central US 50 landscape and aesthetics corridor plan

DESIGN WORKSHOP
Sand County Studios
JW Zunino & Associates
PLACES
CH2MHILL



CORRIDOR PLAN

INCLUDES US 95 FROM THE CLARK COUNTY LINE WEST OF INDIAN SPRINGS NORTH TO I-80 AT TRINITY, US 6 FROM THE CALIFORNIA STATE LINE EAST TO WARM SPRINGS, US 50 FROM SIX MILE CANYON ROAD NEAR DAYTON EAST TO NEW PASS SUMMIT, ALT 95 THROUGH YERINGTON AND ALT 50.

Implementation

Potential Funding Opportunities

Counties, cities, agencies, and other organizations should be familiar with the corridor plan in order to create partnerships that achieve a community's vision and goals. Partnerships are also important if communities desire higher levels of landscape treatment than the level provided through NDOT's normal financial responsibility.

- *Capacity Improvements and New Construction*
 - up to 3% of the total project construction cost may be allocated for landscape and aesthetics
- *Community Projects within the Right-of-way*
 - matching funds program provides funds up to 50% of the cost for specific projects
 - up to \$2 million per year; \$500,000 max. and \$50,000 min.



Central US 95, West US 6, and Central US 50 landscape and aesthetics corridor plan

DESIGN WORKSHOP
Sand County Studios
JW Zunino & Associates
PLACES
CH2MHILL



CORRIDOR PLAN

INCLUDES US 95 FROM THE CLARK COUNTY LINE WEST OF INDIAN SPRINGS NORTH TO I-80 AT TRINITY, US 6 FROM THE CALIFORNIA STATE LINE EAST TO WARM SPRINGS, US 50 FROM SIX MILE CANYON ROAD NEAR DAYTON EAST TO NEW PASS SUMMIT, ALT 95 THROUGH YERINGTON AND ALT 50.

Endorsement

- Agree in principle with the landscape and aesthetic opportunities identified within your jurisdiction; including the design objectives and guidelines.
- Agree in principle to work in partnership with NDOT to develop a highway system that reflects the land and people of Nevada. The Corridor Plan is not a financially constraining document. It establishes the vision for landscape and aesthetics for Nevada's state-managed highways.
- Support the vision that highways should be aesthetically pleasing, as well as safe and cost effective.
- Endorse the Corridor Plan as a management tool for integrating landscape and aesthetics into all aspects of the planning, design, construction, operations, and maintenance of state-managed highways in Nevada.
- Provide NDOT with signed letter verifying that your agency or organization voted to endorse the *Landscape and Aesthetics Corridor Plan* prepared by the Nevada Department of Transportation for the Central US 95, West US 6, and West US 50 corridor.



Central US 95, West US 6, and Central US 50 landscape and aesthetics corridor plan

DESIGN WORKSHOP
Sand County Studios
JW Zunino & Associates
PLACES
CH2MHILL



CORRIDOR PLAN

INCLUDES US 95 FROM THE CLARK COUNTY LINE WEST OF INDIAN SPRINGS NORTH TO I-80 AT TRINITY, US 6 FROM THE CALIFORNIA STATE LINE EAST TO WARM SPRINGS, US 50 FROM SIX MILE CANYON ROAD NEAR DAYTON EAST TO NEW PASS SUMMIT, ALT 95 THROUGH YERINGTON AND ALT 50.

Schedule

- December 2006 Corridor Plans completed.
- Feb-March 2007 Agencies and organizations provide endorsement letters to NDOT
- April 2007 STTAC endorses corridor plans
- April 2007 Director of NDOT approves Corridor Plans
- April 2007 Corridor Plans go into effect



Central US 95, West US 6, and Central US 50 landscape and aesthetics corridor plan

DESIGN WORKSHOP
Sand County Studios
JW Zunino & Associates
PLACES
CH2MHILL



CORRIDOR PLAN

INCLUDES US 95 FROM THE CLARK COUNTY LINE WEST OF INDIAN SPRINGS NORTH TO I-80 AT TRINITY, US 6 FROM THE CALIFORNIA STATE LINE EAST TO WARM SPRINGS, US 50 FROM SIX MILE CANYON ROAD NEAR DAYTON EAST TO NEW PASS SUMMIT, ALT 95 THROUGH YERINGTON AND ALT 50.