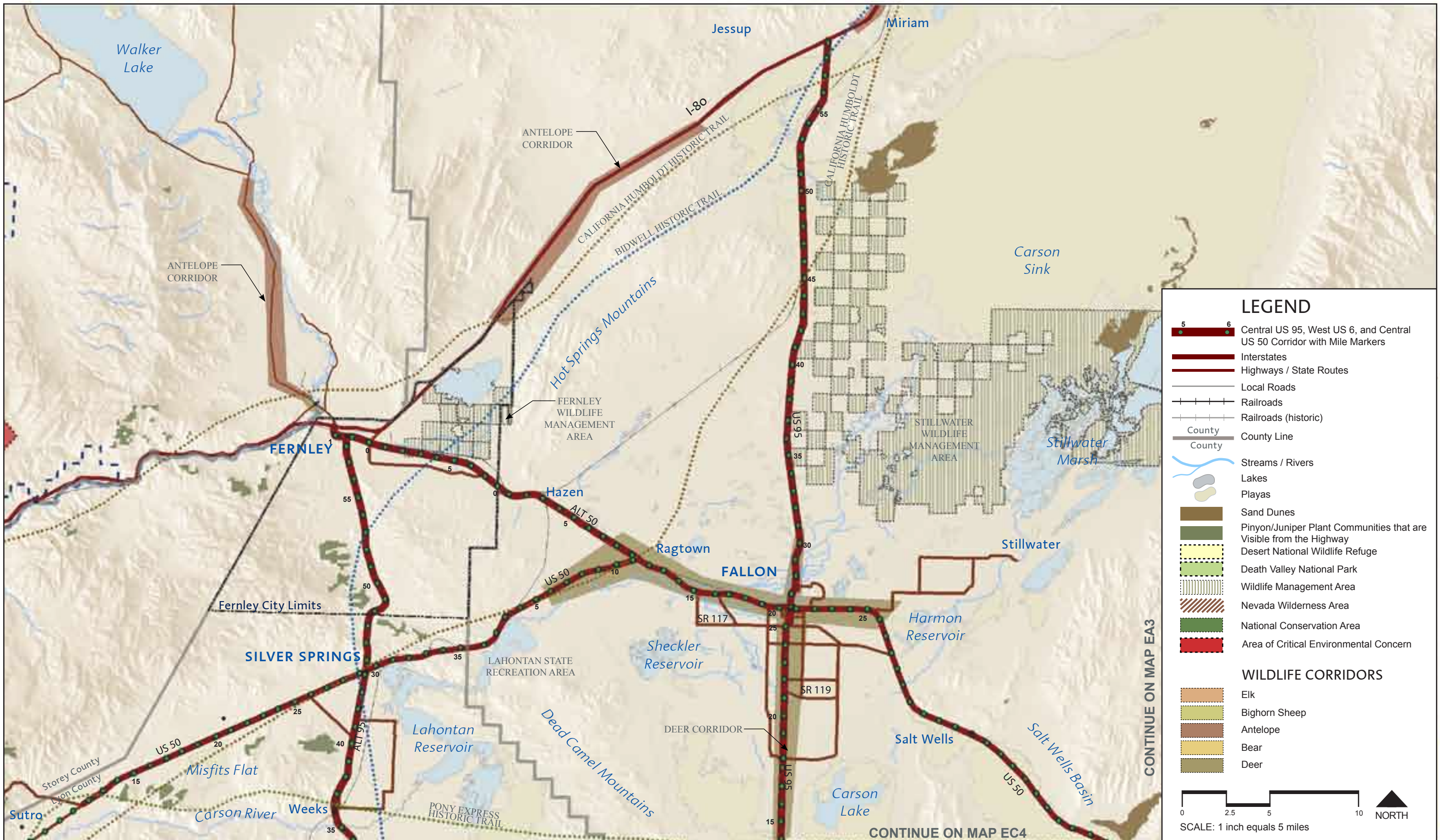




Central US 95, West US 6, and Central US 50 landscape and aesthetics corridor plan



Central US 95, West US 6, and Central US 50 landscape and aesthetics corridor plan



# ENVIRONMENTAL CONSIDERATIONS

US 95: FALLON TO I-80, US 50: DAYTON TO FALLON, ALT 95: WEEKS TO FERNLEY, AND ALT 50

### LEGEND

- Central US 95, West US 6, and Central US 50 Corridor with Mile Markers
- Interstates
- Highways / State Routes
- Local Roads
- Railroads
- Railroads (historic)
- County Line
- County
- Streams / Rivers
- Lakes
- Playas
- Sand Dunes
- Pinyon/Juniper Plant Communities that are Visible from the Highway
- Desert National Wildlife Refuge
- Death Valley National Park
- Wildlife Management Area
- Nevada Wilderness Area
- National Conservation Area
- Area of Critical Environmental Concern

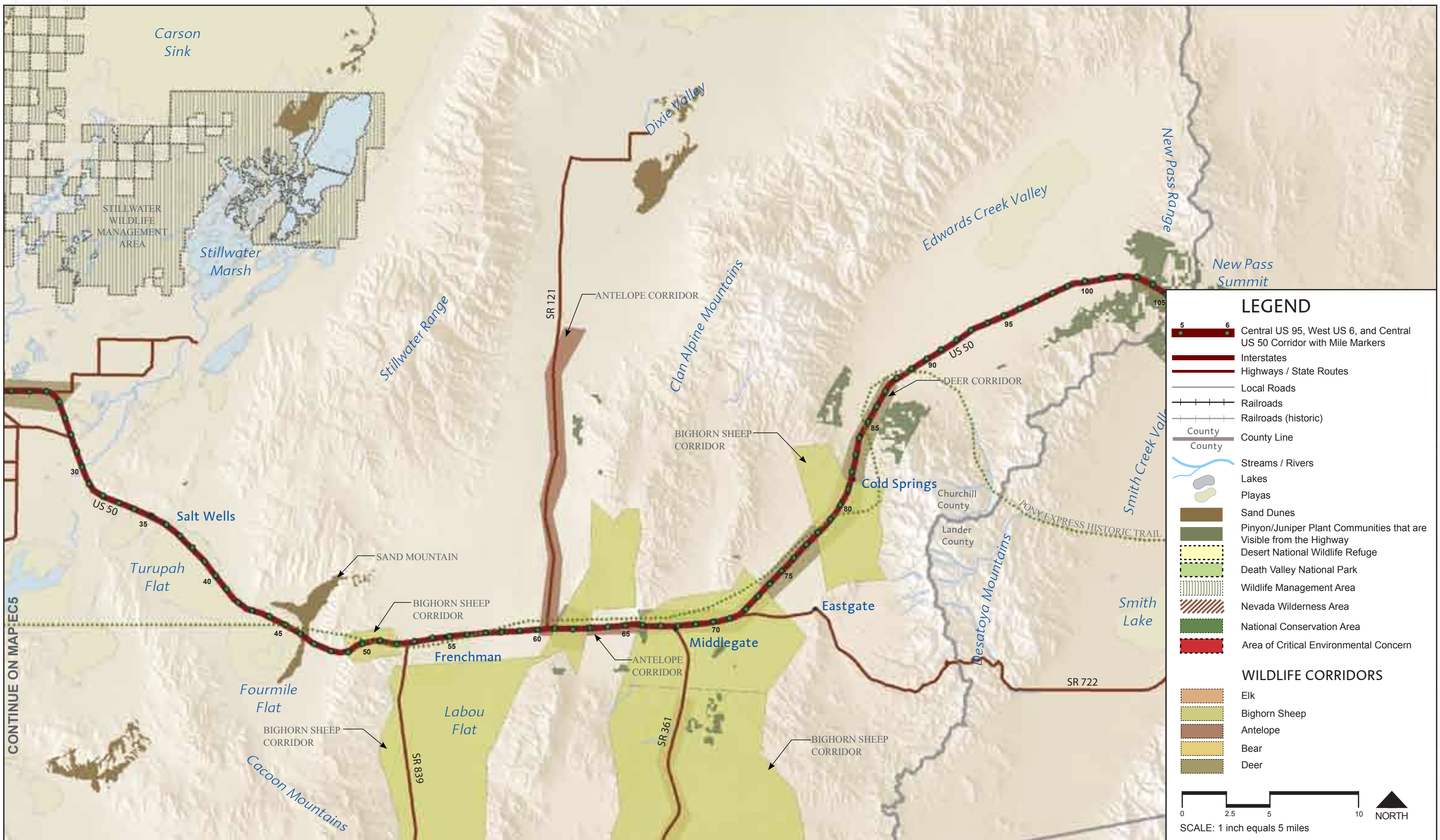
### WILDLIFE CORRIDORS

- Elk
- Bighorn Sheep
- Antelope
- Bear
- Deer

SCALE: 1 inch equals 5 miles

CONTINUE ON MAP EA3

CONTINUE ON MAP EC4



### LEGEND

- 5 6 Central US 95, West US 6, and Central US 50 Corridor with Mile Markers
- Interstates
- Highways / State Routes
- Local Roads
- Railroads
- Railroads (historic)
- County Line
- County
- Streams / Rivers
- Lakes
- Playas
- Sand Dunes
- Pinyon/Juniper Plant Communities that are Visible from the Highway
- Desert National Wildlife Refuge
- Death Valley National Park
- Wildlife Management Area
- Nevada Wilderness Area
- National Conservation Area
- Area of Critical Environmental Concern

### WILDLIFE CORRIDORS

- Elk
- Bighorn Sheep
- Antelope
- Bear
- Deer

SCALE: 1 inch equals 5 miles

NORTH

## VISUAL RESOURCES

### Viewsheds and Distance Zones

Viewshed refers to all areas that are visible from a section of highway. Similar to the boundaries of a watershed, the boundaries of viewsheds are usually high points in the landscape, such as ridges and hills. Viewsheds are determined by analyzing digital elevation models in a Geographic Information Systems (GIS) program. All areas that are visible from the highway are combined to create the viewshed.

Areas within a viewshed are perceived by drivers with varying levels of detail. The detail that a driver perceives is related to the distance between the driver and the feature being observed. Distance zones, including foreground zones, middleground zones and background zones, define the traveler's viewing distances. Distance zones are delineated through a process developed by the USFS that relates the detail and importance of distance to the driver on the highway. Identifying the portions of a viewshed that are most frequently seen helps determine what portions of the landscape are most critical to establishing the highway's visual character and what areas are most sensitive to change.

### Foreground Zones

Viewers can perceive details such as forms, lines and colors within a one quarter mile distance. Changes to the landscape are most significant within the foreground view because they are most immediate to the viewpoint. This zone can be easily manipulated through the Landscape and Aesthetic Program, in part because it includes the highway right-of-way.

### Middleground Zones

Viewers can perceive details such as forms, lines, and colors in masses located from one quarter mile to three miles away.

### Background Zones

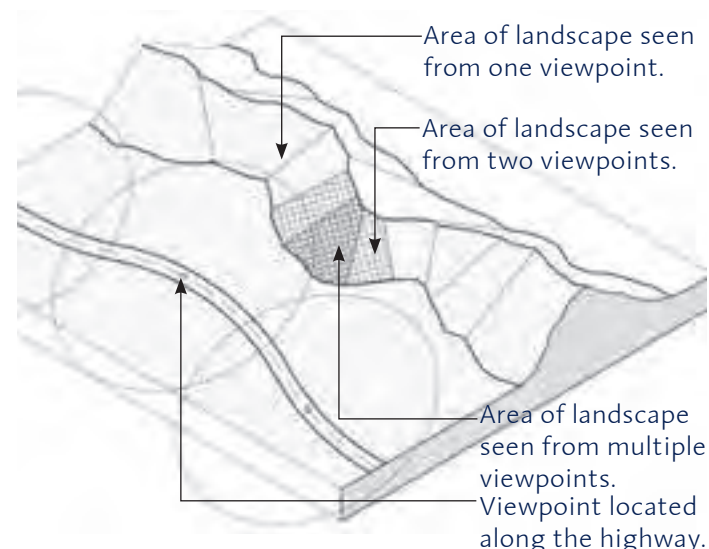
Background is the area beyond the middleground, extending to the horizon or limit of the area that is seen. For this Corridor Plan, the background extends up to 25 miles from the centerline of the highway. Viewers can perceive broad forms, lines, wide valleys, distant hills, and mountains.

### Viewshed and Distance Zones Mapping

Viewsheds and Distance zones along the corridor are shown on the maps beginning on page 1.30. This analysis sets the foundation for visual quality management along the corridor. Darker shading denotes an area that can be seen most often from points on the highway. These areas usually coincide with landscapes of high visual quality and scenic values such as mountain ranges. Management of these areas through multi-jurisdictional cooperation can protect them from billboards and other land uses that obstruct views and detract from the travel experience.

### Scenic Resources

The corridor passes through vast open stretches of the state. Expansive valleys create a distant backdrop for the wild and rugged landscape that



(1) This illustration describes the concept of a viewshed and how a viewshed analysis is conducted.

characterizes much of Nevada. High mountain passes, agricultural valleys, and vast desert playas combine to create a memorable impression for visitors and creates an indelible sense of identity for those who live in the region.

### Visual Analysis

A visual analysis was conducted along the corridor to evaluate the viewsheds and rank them relative to their quality. Scenic resources were identified and highly visible landforms, such as mountain ranges and unique cliffs, were located. Verified through site visits, the visual analysis is shown on Maps VA1-VA6. Areas of highest scenic value include:

- Queen Valley located at the California border on US 6 consists of an open valley bounded by striking mountains.
- Boundary Peak, the highest peak in Nevada, can be seen from Coaldale Junction. The elevation change is marked by the transition of vegetation from sage to pinyon pine and junipers.
- Unique rock outcroppings and topography change create visual interest just outside of Tonopah.
- Walker Lake lies adjacent to US 95 and provides scenic interest in contrast to the surrounding arid landscape.
- Sand Mountain is located on US 50 east of Fallon. The sand dune intrigues the traveler as it glistens in the distance.
- The Carson River and Walker River parallel and cross under the highways in various areas. Locations, such as north of Yerington, are unique and provide visual interest and shade because of the tree canopy.
- Historic towns like Goldfield and Tonopah contain attractive buildings. Historic buildings and elements enhance the scenic quality of communities.



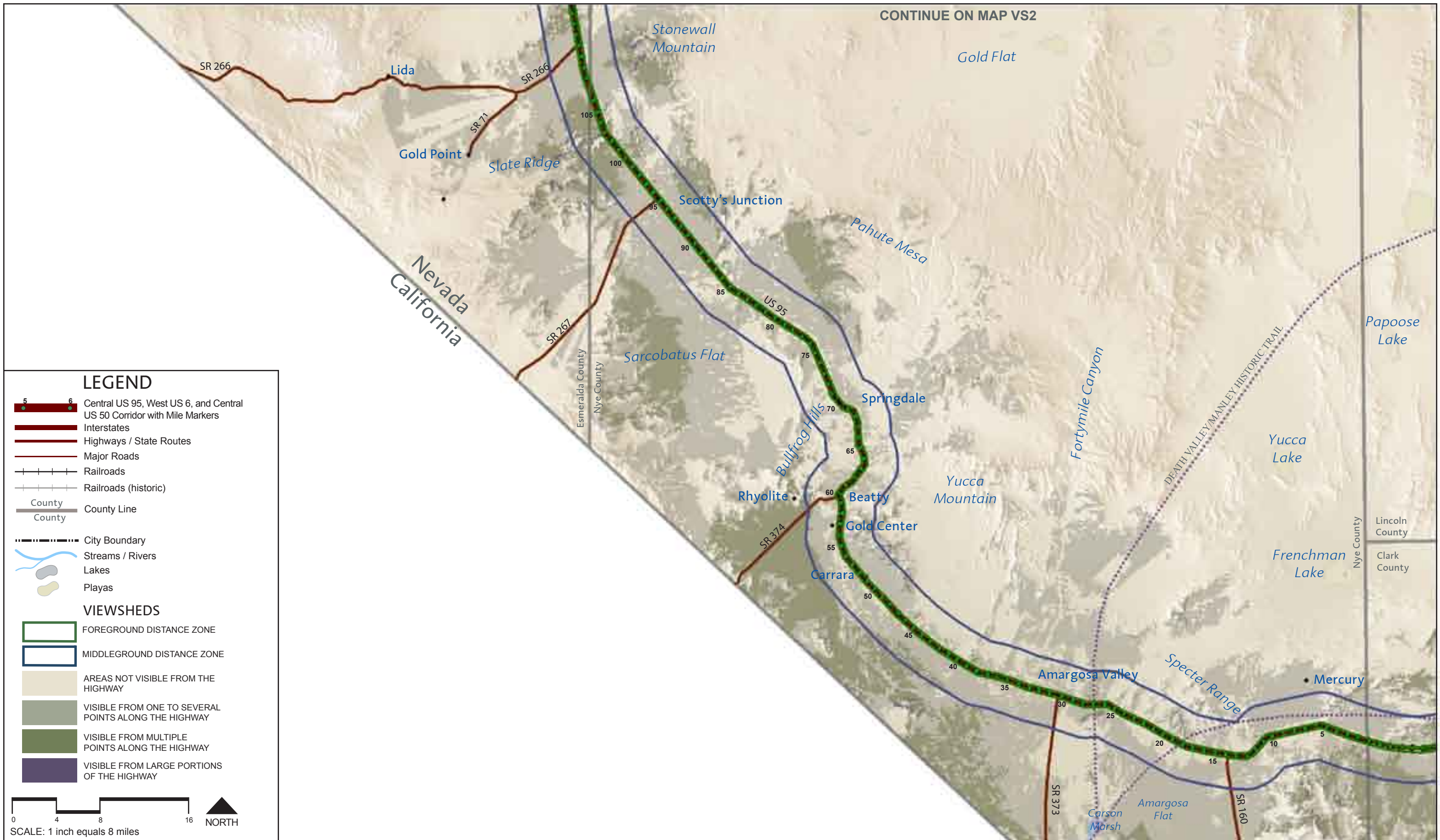
(2) Viewers perceive details such as forms, lines, and color in the foreground zone. This zone, located up to a 1/4 mile distance from the road, is the most easily manipulated because it includes the highway right-of-way.

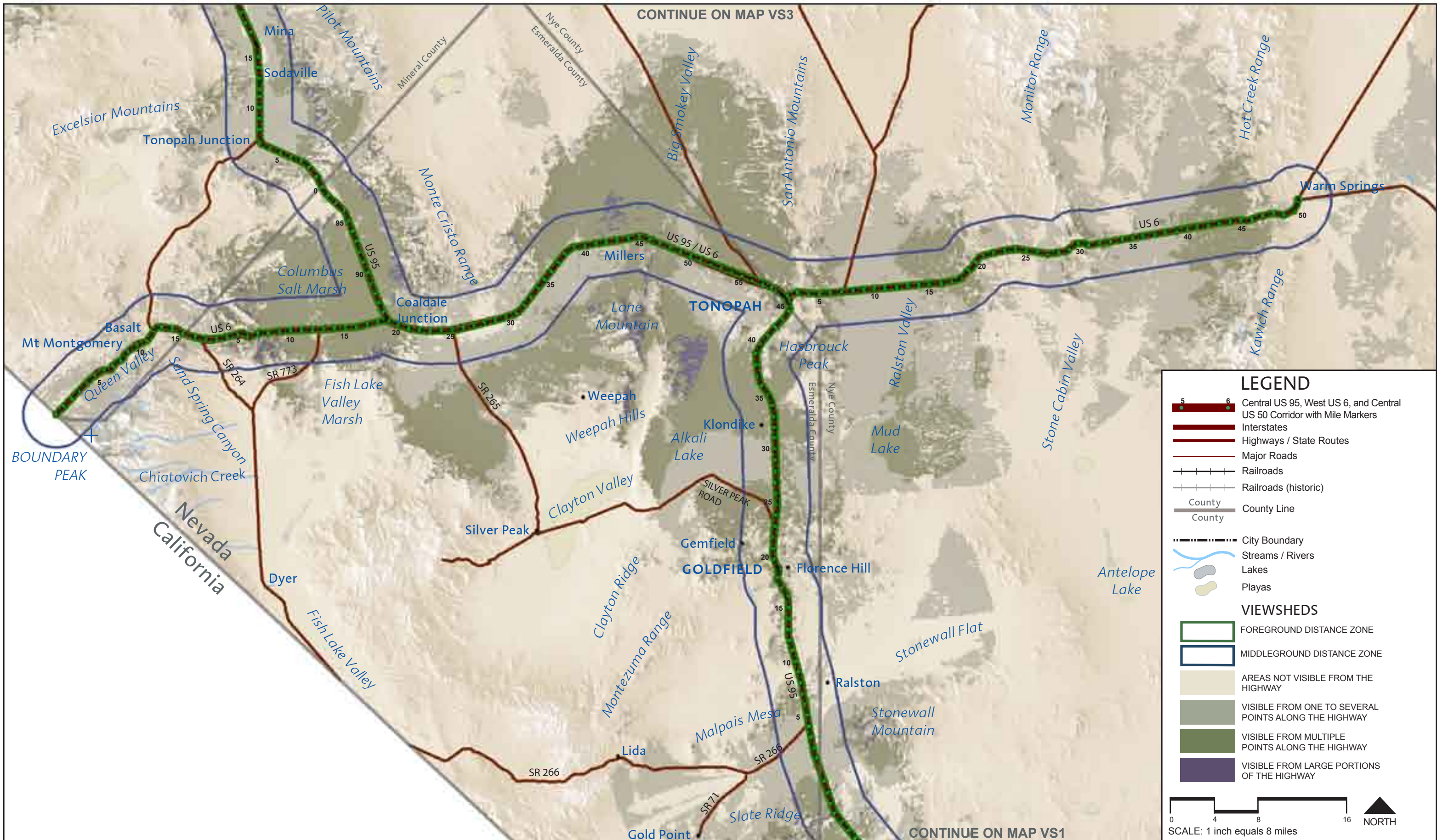


(3) Middleground zones extend from 1/4 mile to 3 miles from the highway. Forms, lines, and color are perceived in masses. Potential development and signage impact these areas.



(4) Background zones extend to the limit of area that is seen. Viewers perceive broad forms, wide valleys, and distant mountains.





Central US 95, West US 6, and Central US 50 landscape and aesthetics corridor plan

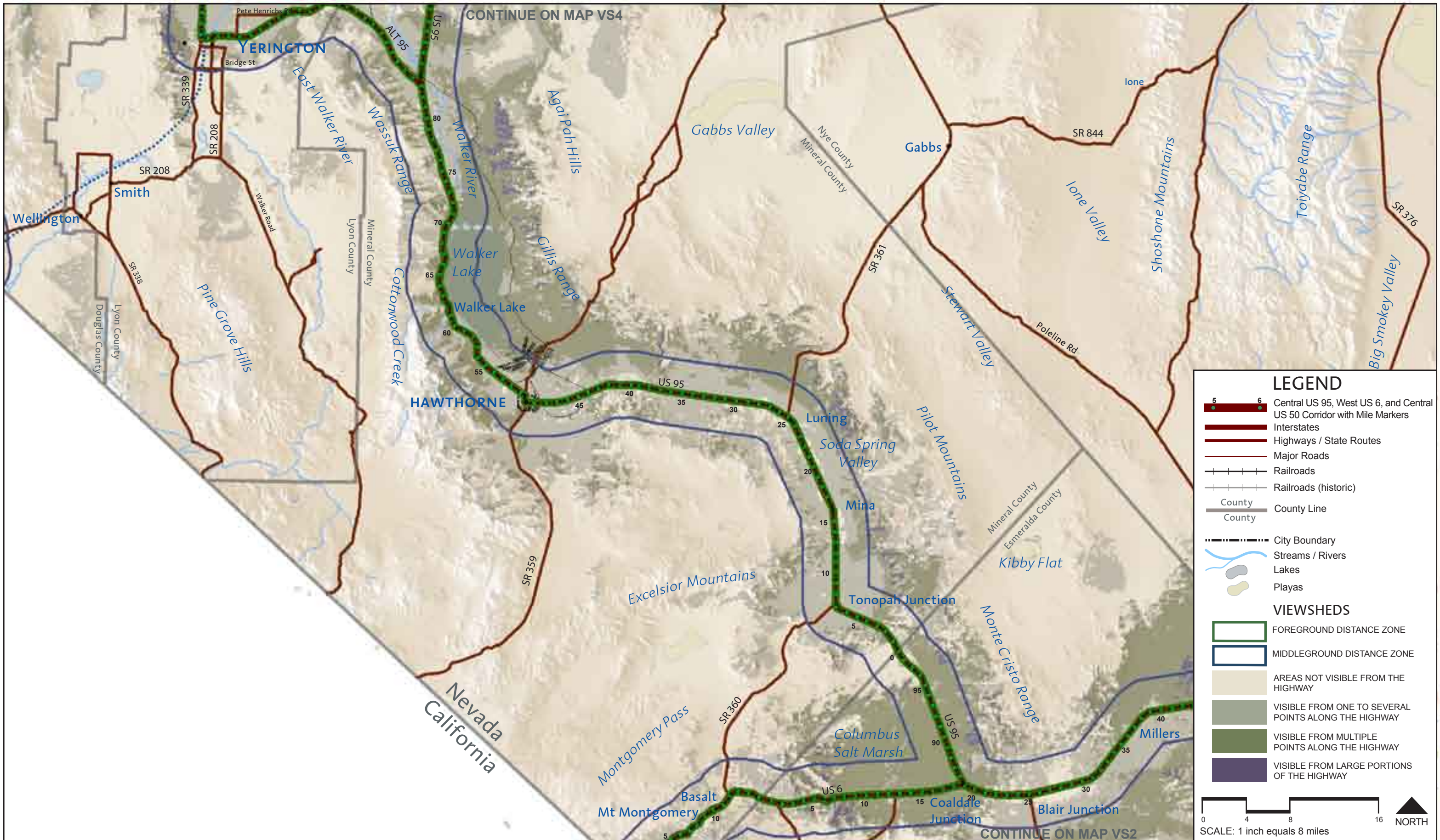


**US 95: ESMERALDA COUNTY MM5 TO TONOPAH AND US 6 TO WARM SPRINGS**

**VIEWSHEDS**

**DESIGN WORKSHOP**  
 PLACES  
 Sand County Studios  
 JW Zunino & Associates  
 CH2MHill

**MAP**  
**VS2**  
**1.31**



### LEGEND

- Central US 95, West US 6, and Central US 50 Corridor with Mile Markers
- Interstates
- Highways / State Routes
- Major Roads
- Railroads
- Railroads (historic)
- County Line
- County
- City Boundary
- Streams / Rivers
- Lakes
- Playas

### VIEWSHEDS

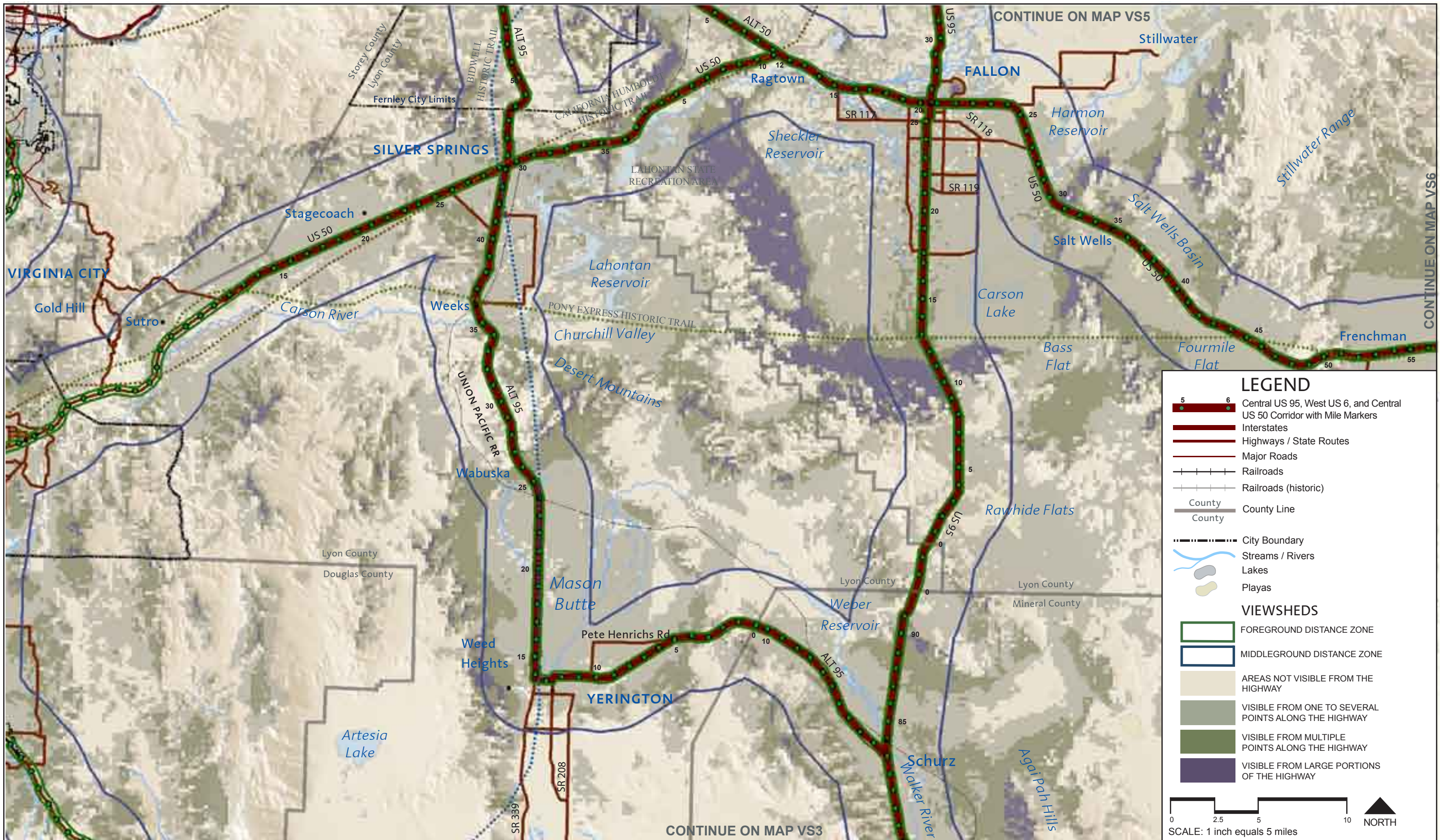
- FOREGROUND DISTANCE ZONE
- MIDDLEGROUND DISTANCE ZONE
- AREAS NOT VISIBLE FROM THE HIGHWAY
- VISIBLE FROM ONE TO SEVERAL POINTS ALONG THE HIGHWAY
- VISIBLE FROM MULTIPLE POINTS ALONG THE HIGHWAY
- VISIBLE FROM LARGE PORTIONS OF THE HIGHWAY

SCALE: 1 inch equals 8 miles

NORTH

**VIEWSHEDS**  
**US 95: COALDALE JUNCTION TO US 95/ALT 95 INTERSECTION**

*Central US 95, West US 6, and Central US 50 landscape and aesthetics corridor plan*



Central US 95, West US 6, and Central US 50 landscape and aesthetics corridor plan

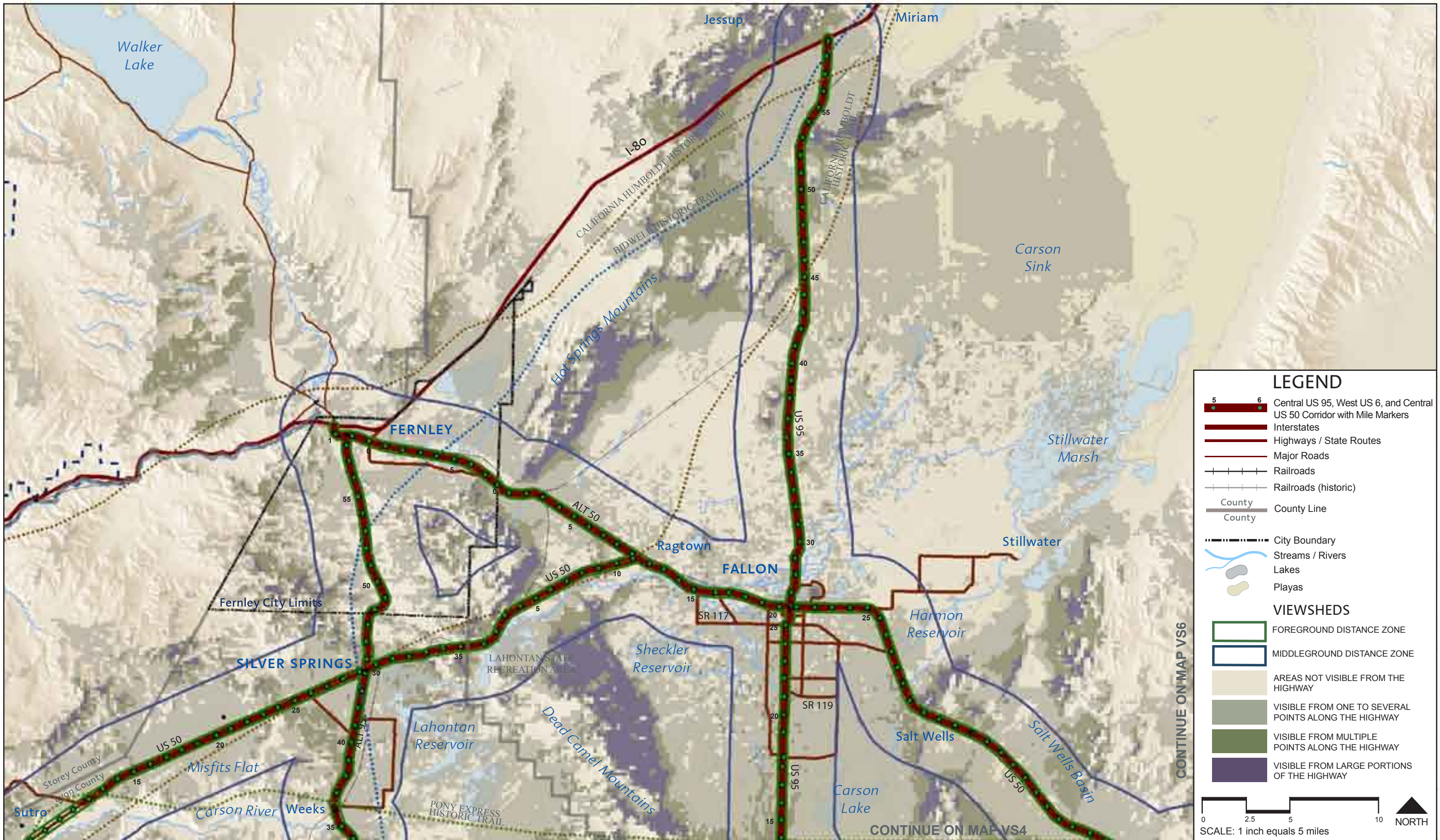


## VIEWSHEDS

### US 95: SCHURZ TO FALLON, ALT 95: SCHURZ TO SILVER SPRINGS, AND US 50

CONSULTANT TEAM	<b>DESIGN WORKSHOP</b>	<b>MAP VS4</b>
	PLACES	
	Sand County Studios JW Zunino & Associates CH2MHill	
	<b>1.33</b>	





### LEGEND

- Central US 95, West US 6, and Central US 50 Corridor with Mile Markers
- Interstates
- Highways / State Routes
- Major Roads
- Railroads
- Railroads (historic)
- County
- County Line
- City Boundary
- Streams / Rivers
- Lakes
- Playas

### VIEWSHEDS

- FOREGROUND DISTANCE ZONE
- MIDDLEGROUND DISTANCE ZONE
- AREAS NOT VISIBLE FROM THE HIGHWAY
- VISIBLE FROM ONE TO SEVERAL POINTS ALONG THE HIGHWAY
- VISIBLE FROM MULTIPLE POINTS ALONG THE HIGHWAY
- VISIBLE FROM LARGE PORTIONS OF THE HIGHWAY

SCALE: 1 inch equals 5 miles

NORTH

**MAP VS5**  
1.34

**DESIGN WORKSHOP PLACES**  
Sand County Studios  
JW Zunino & Associates  
CH2MHill

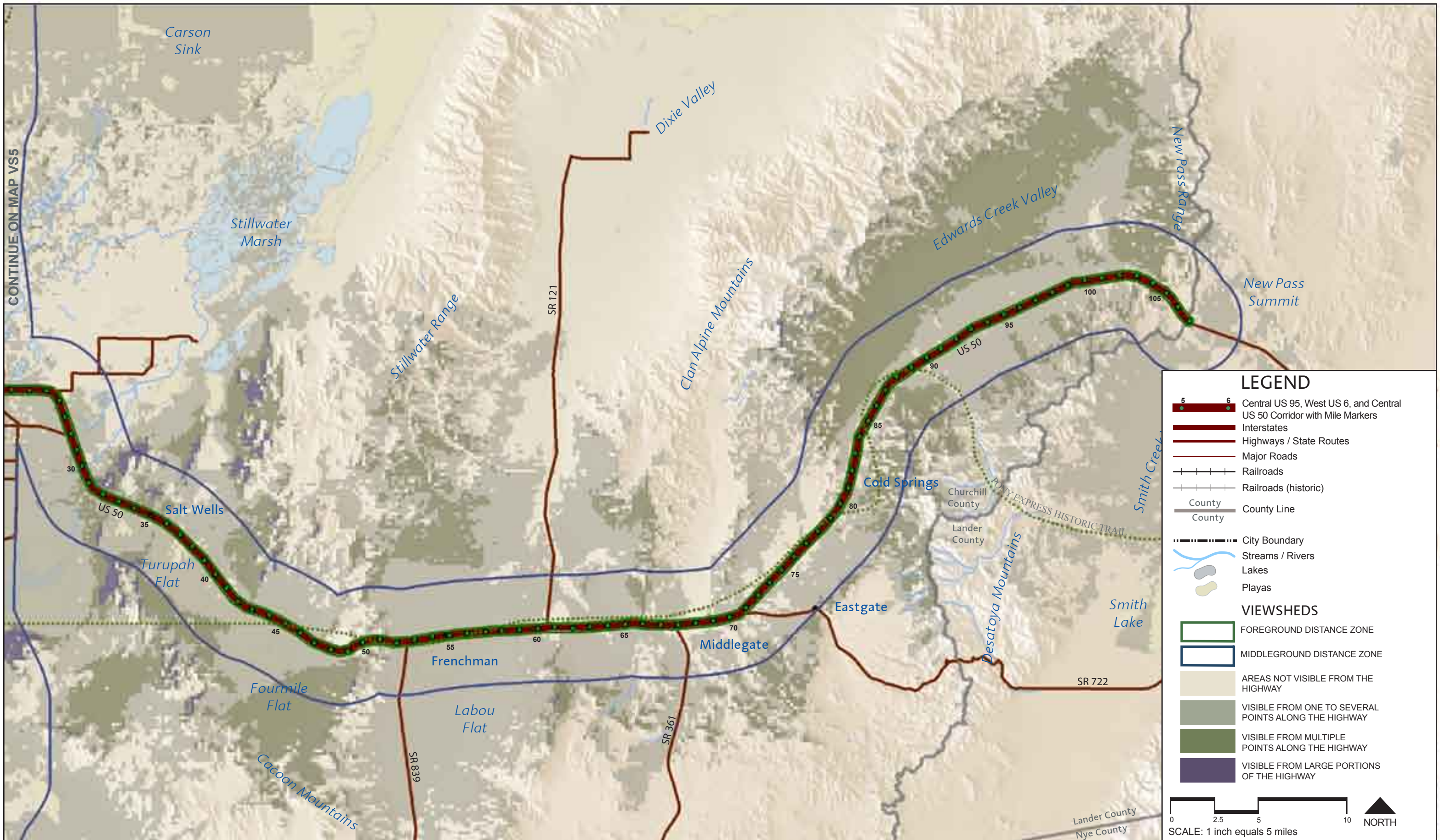
CONSULTANT TEAM

## VIEWSHEDS

US 95: FALLON TO I-80, US 50: DAYTON TO FALLON, ALT 95: WEEKS TO FERNLEY, AND ALT 50

*Central US 95, West US 6, and Central US 50 landscape and aesthetics corridor plan*





Central US 95, West US 6, and Central US 50 landscape and aesthetics corridor plan



**VIEWSHEDS**  
 US 50: CHURCHILL COUNTY MM 25 TO NEW PASS SUMMIT

**LEGEND**

- Central US 95, West US 6, and Central US 50 Corridor with Mile Markers
- Interstates
- Highways / State Routes
- Major Roads
- Railroads
- Railroads (historic)
- County Line
- City Boundary
- Streams / Rivers
- Lakes
- Playas

**VIEWSHEDS**

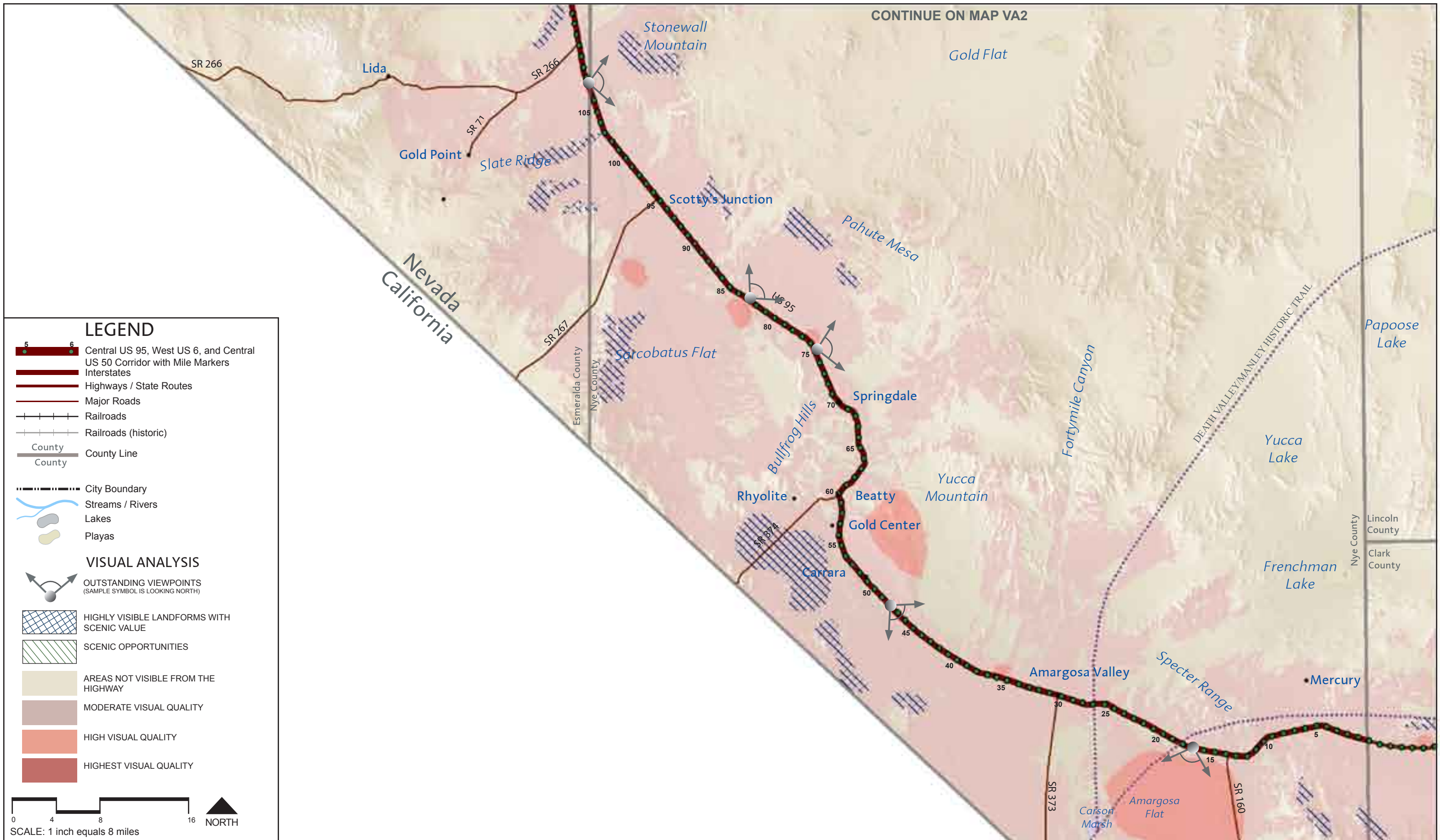
- FOREGROUND DISTANCE ZONE
- MIDDLEGROUND DISTANCE ZONE
- AREAS NOT VISIBLE FROM THE HIGHWAY
- VISIBLE FROM ONE TO SEVERAL POINTS ALONG THE HIGHWAY
- VISIBLE FROM MULTIPLE POINTS ALONG THE HIGHWAY
- VISIBLE FROM LARGE PORTIONS OF THE HIGHWAY

SCALE: 1 inch equals 5 miles

0 2.5 5 10 NORTH

**DESIGN WORKSHOP**  
 PLACES  
 Sand County Studios  
 JW Zunino & Associates  
 CH2MHill

**MAP VS6**  
**1.35**



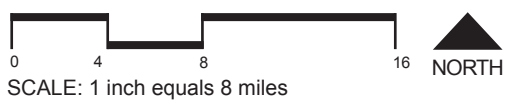
CONTINUE ON MAP VA2

**LEGEND**

- Central US 95, West US 6, and Central US 50 Corridor with Mile Markers
- Interstates
- Highways / State Routes
- Major Roads
- Railroads
- Railroads (historic)
- County Line
- City Boundary
- Streams / Rivers
- Lakes
- Playas

**VISUAL ANALYSIS**

- OUTSTANDING VIEWPOINTS (SAMPLE SYMBOL IS LOOKING NORTH)
- HIGHLY VISIBLE LANDFORMS WITH SCENIC VALUE
- SCENIC OPPORTUNITIES
- AREAS NOT VISIBLE FROM THE HIGHWAY
- MODERATE VISUAL QUALITY
- HIGH VISUAL QUALITY
- HIGHEST VISUAL QUALITY



**MAP VA1**  
**1.36**

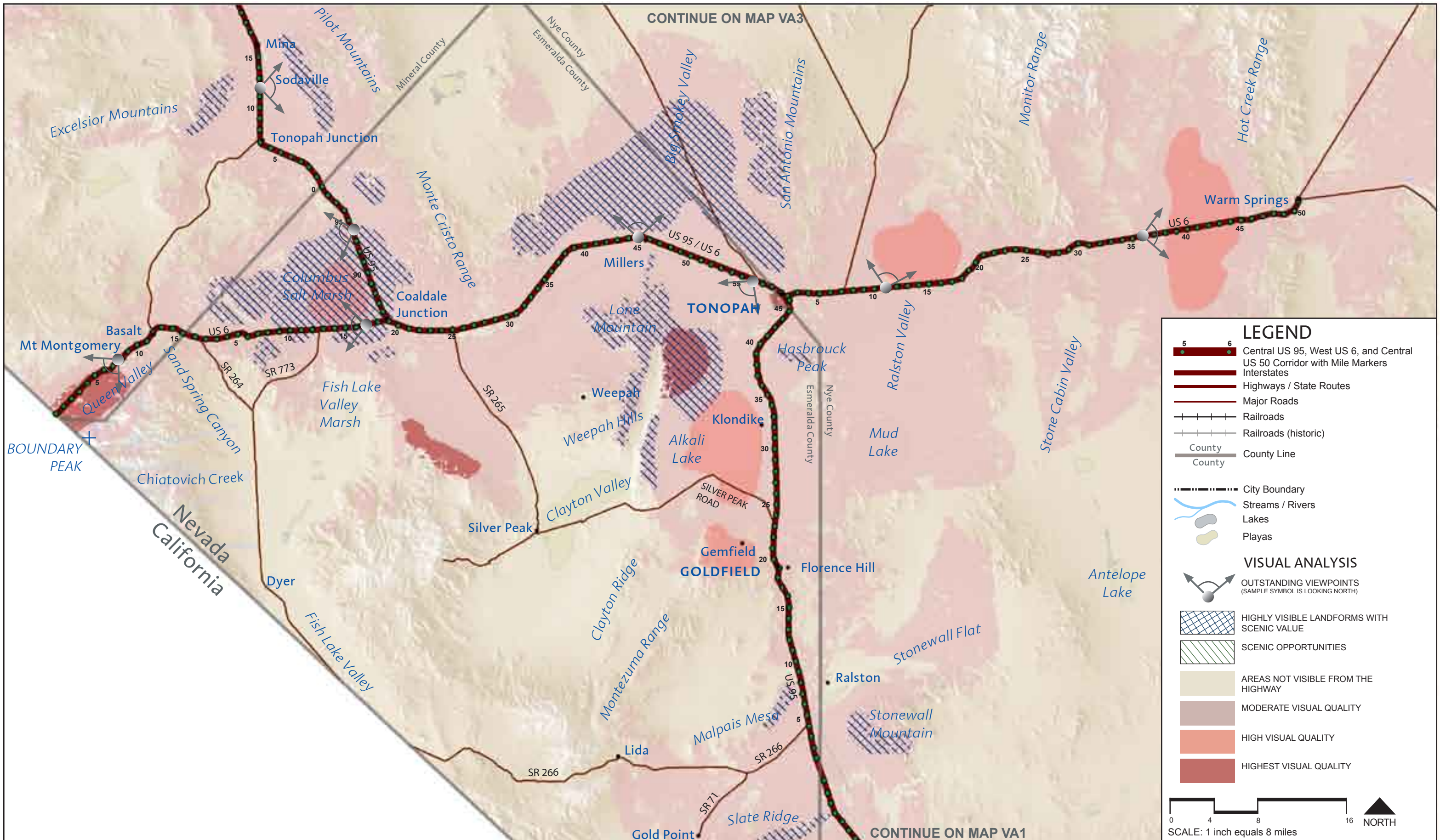
**DESIGN WORKSHOP PLACES**  
 Sand County Studios  
 JW Zunino & Associates  
 CH2MHill

**CONSULTANT TEAM**

**VISUAL ANALYSIS**  
**US 95: CLARK/NYE COUNTY LINE TO ESMERALDA COUNTY MM5**

*Central US 95, West US 6, and Central US 50 landscape and aesthetics corridor plan*





Central US 95, West US 6, and Central US 50 landscape and aesthetics corridor plan

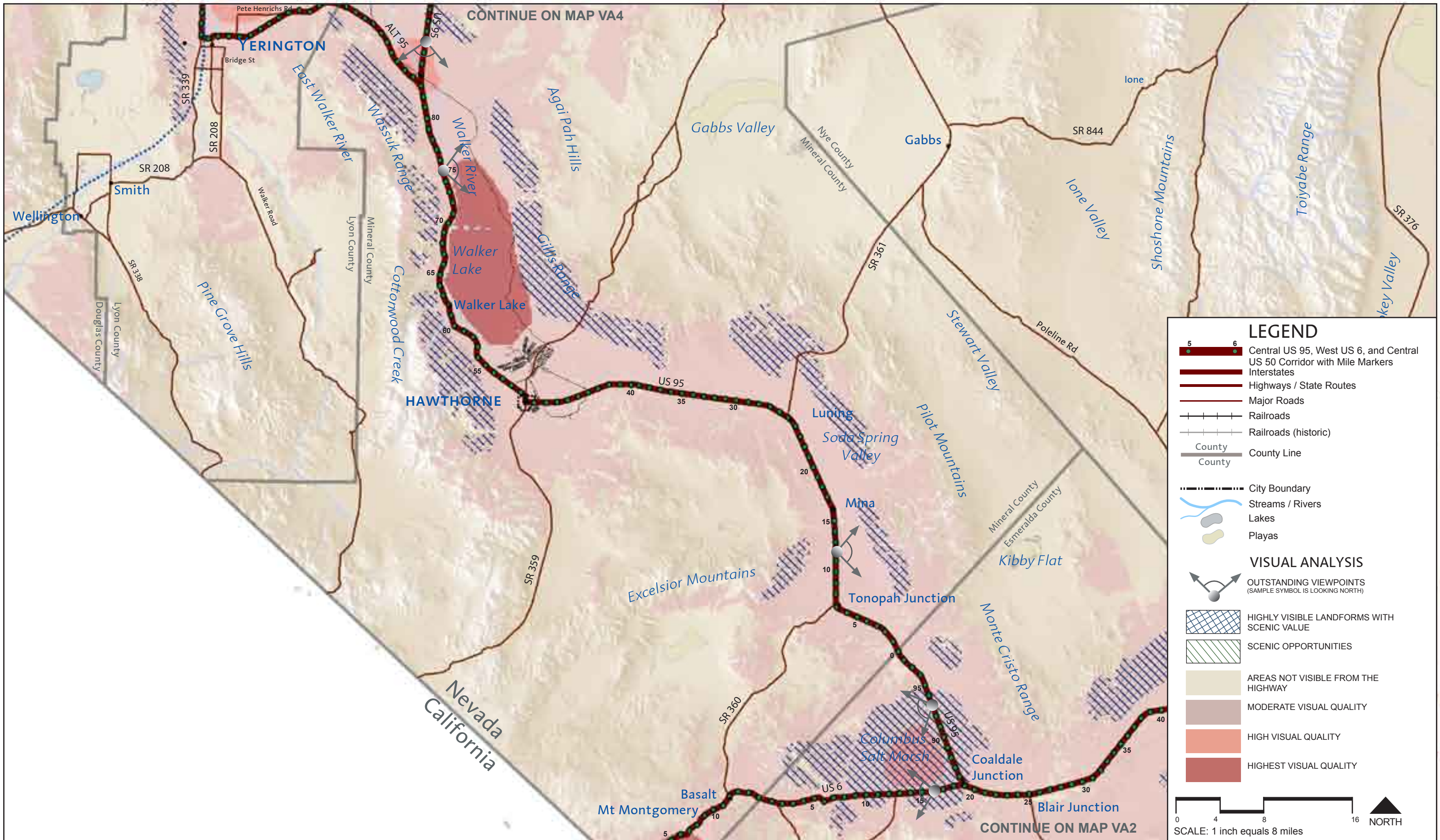


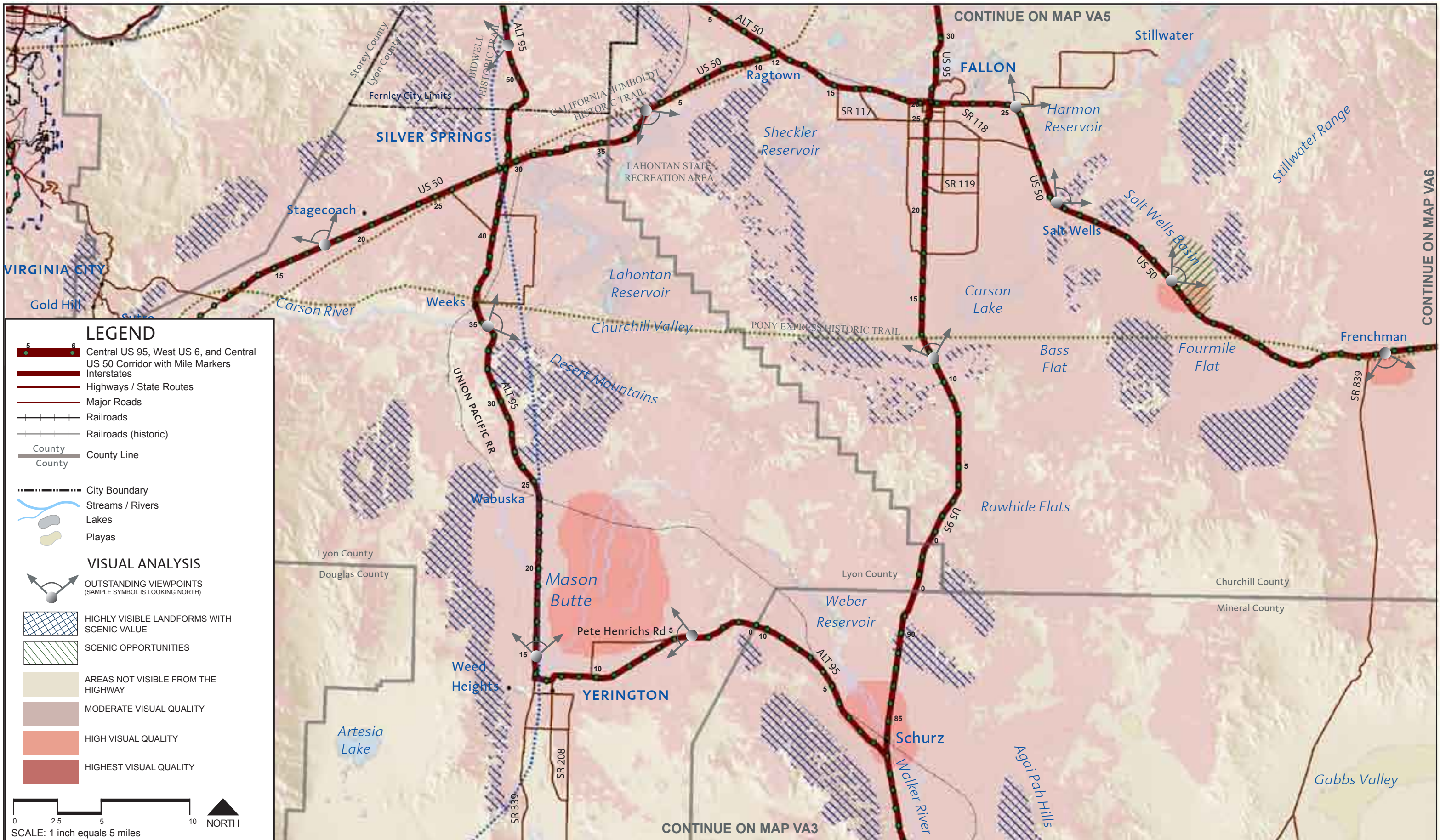
**US 95: ESMERALDA COUNTY MM 5 TO TONOPAH AND US 6 TO WARM SPRINGS**

**VISUAL ANALYSIS**

**DESIGN WORKSHOP**  
 PLACES  
 Sand County Studios  
 JW Zunino & Associates  
 CH2MHill

**MAP**  
**VA2**  
**1.37**





**LEGEND**

- 5 6 Central US 95, West US 6, and Central US 50 Corridor with Mile Markers
- Interstates
- Highways / State Routes
- Major Roads
- Railroads
- Railroads (historic)
- County Line
- County
- City Boundary
- Streams / Rivers
- Lakes
- Playas

**VISUAL ANALYSIS**

- OUTSTANDING VIEWPOINTS (SAMPLE SYMBOL IS LOOKING NORTH)
- HIGHLY VISIBLE LANDFORMS WITH SCENIC VALUE
- SCENIC OPPORTUNITIES
- AREAS NOT VISIBLE FROM THE HIGHWAY
- MODERATE VISUAL QUALITY
- HIGH VISUAL QUALITY
- HIGHEST VISUAL QUALITY

SCALE: 1 inch equals 5 miles

NORTH

Central US 95, West US 6, and Central US 50 landscape and aesthetics corridor plan

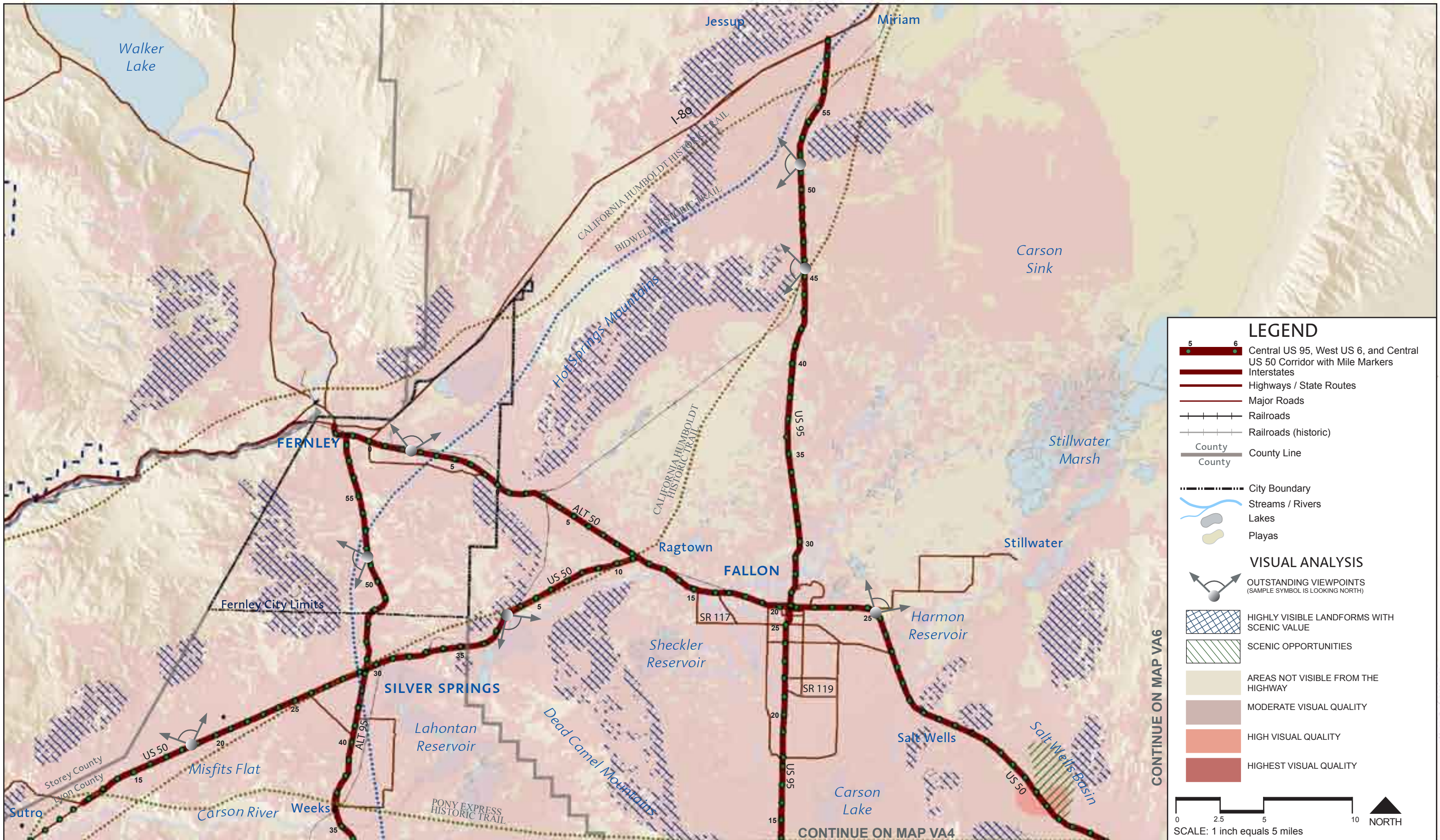


**VISUAL ANALYSIS**  
 US 95: SCHURZ TO FALLON, ALT 95: SCHURZ TO SILVER SPRINGS, AND US 50

**CONSULTANT TEAM**

**DESIGN WORKSHOP**  
 PLACES  
 Sand County Studios  
 JW Zunino & Associates  
 CH2MHill

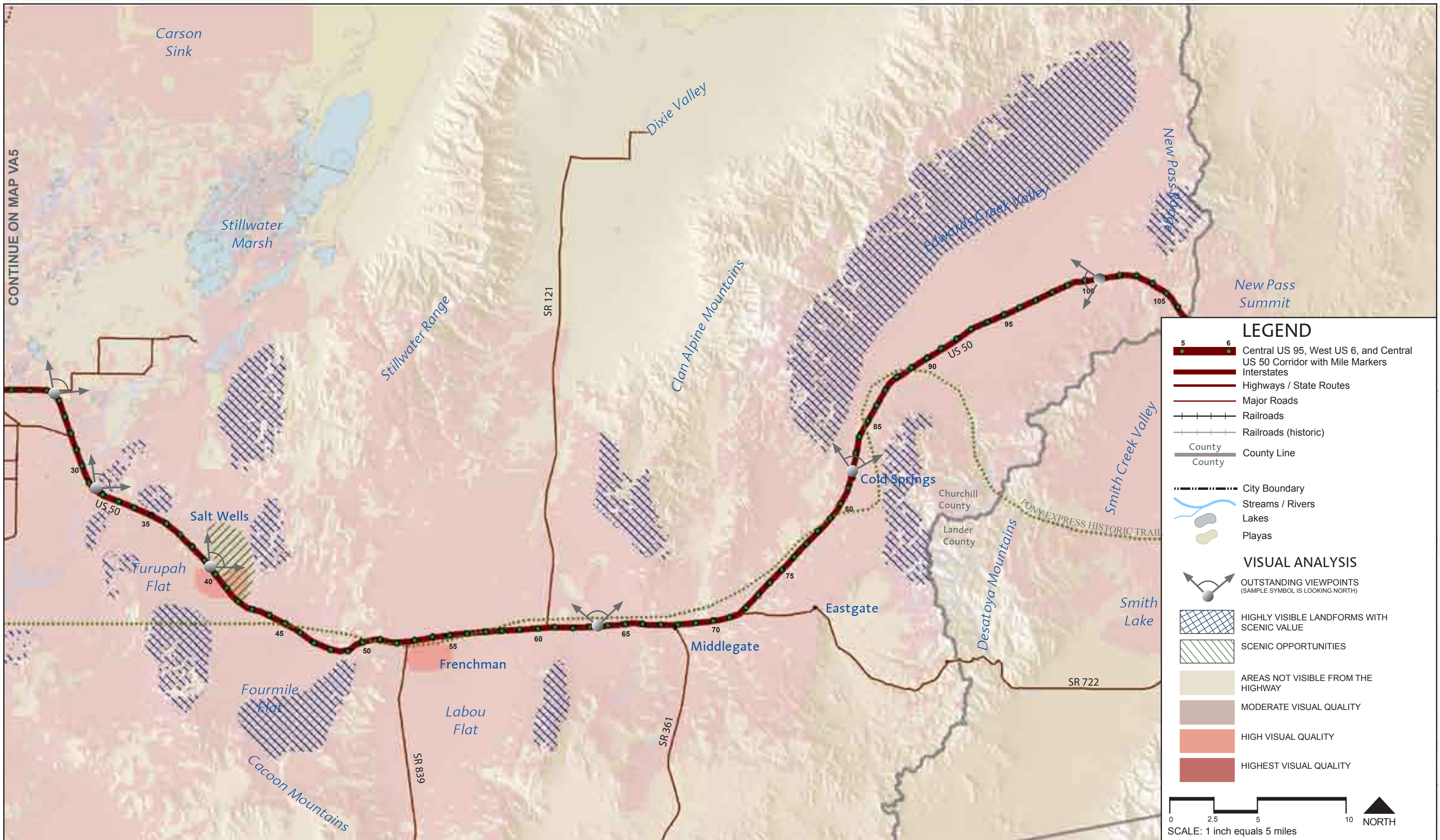
**MAP VA4**  
**1.39**



**VISUAL ANALYSIS**

**US 95: FALLON TO I-80, US 50: DAYTON TO FALLON, ALT 95: WEEKS TO FERNLEY, AND ALT 50**

Central US 95, West US 6, and Central US 50 landscape and aesthetics corridor plan



Central US 95, West US 6, and Central US 50 landscape and aesthetics corridor plan



**VISUAL ANALYSIS**  
 US 50: CHURCHILL COUNTY MM 25 TO NEW PASS SUMMIT

CONSULTANT TEAM	<b>DESIGN WORKSHOP</b>	<b>MAP VA6</b>
	PLACES	
	Sand County Studios JW Zunino & Associates CH2MHill	
	<b>1.41</b>	