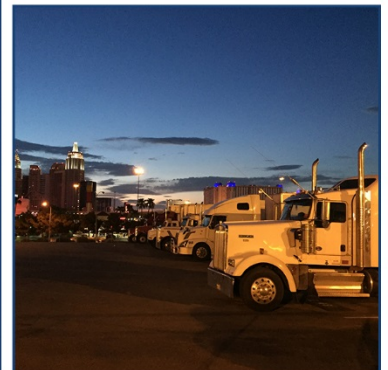


Nevada Truck Parking Implementation Plan

Task 4: Draft Needs Assessment – Truck Parking Supply



prepared for
Nevada Department
of Transportation

prepared by
Cambridge Systematics, Inc.
with
American Transportation Research Institute
Horrocks Engineers
Silver State Traffic Data Collection

September 28, 2018

draft report

Nevada Truck Parking Implementation Plan

Task 4: Draft Needs Assessment – Truck Parking Supply

prepared for

Nevada Department of Transportation

prepared by

Cambridge Systematics, Inc.
515 S. Figueroa Street, Suite 1975
Los Angeles, CA 90071

with

American Transportation Research Institute
Horrocks Engineers
Silver State Traffic Data Collection

date

September 28, 2018

Table of Contents

1.0	Introduction	1-1
2.0	Parking Attributes	2-3
2.1	Authorized and Unauthorized	2-3
2.2	Paved and Unpaved	2-3
2.3	Marked and Unmarked	2-4
2.4	Private and Public	2-4
3.0	Truck Parking Capacity	3-5
3.1	Statewide Capacity	3-5
3.2	Key Freight Corridors - Truck Parking Capacity	3-9
3.2.1	I-15 Corridor	3-9
3.2.2	I-80 Corridor	3-12
3.2.3	US 6 Corridor	3-15
3.2.4	US 50 Corridor	3-17
3.2.5	US 93 Corridor	3-19
3.2.6	US 95 Corridor	3-21
3.2.7	US 395	3-23
3.3	Future Capacity.....	3-25
Appendix A.	Truck Parking Capacity	A-1

List of Tables

Table 3.1	Freight Corridor Truck Parking Capacity Summary.....	3-9
Table 3.2	I-15 Corridor Truck Parking Capacity	3-10
Table 3.3	I-80 Corridor Parking Capacity	3-12
Table 3.4	US 6 Corridor Parking Capacity	3-15
Table 3.5	US 50 Corridor Parking Capacity	3-17
Table 3.6	US 93 Corridor Parking Capacity	3-19
Table 3.7	US 95 Corridor Parking Capacity	3-21
Table 3.8	US 395 Corridor Parking Capacity	3-23
Table A.1	Truck Parking Capacity Details – Sorted by Number of Spaces.....	A-1

List of Figures

Figure 2.1	Unauthorized Parking, I-15 Valley of Fire Off-Ramp Near Moapa Paiute Travel Plaza.....	2-3
Figure 2.2	Authorized, Public, Unpaved, Unmarked Spaces at Truck Parking Pull-out (I-15, Top of Mormon Mesa).....	2-4
Figure 3.1	Truck Parking Capacity Categories	3-5
Figure 3.2	Nevada Truck Parking Locations.....	3-6
Figure 3.3	Southern Nevada Detail – Nevada Truck Parking Locations	3-7
Figure 3.4	Northwestern Nevada Detail – Nevada Truck Parking Locations	3-8
Figure 3.5	Morton’s Valero Travel Plaza, Las Vegas, NV	3-10
Figure 3.6	I-15 Corridor Truck Parking Locations.....	3-11
Figure 3.7	Petro Shopping Center, Sparks, NV.....	3-12
Figure 3.8	Western I-80 Truck Parking Locations	3-13
Figure 3.9	Eastern I-80 Truck Parking Locations	3-14
Figure 3.10	R Place Food (US 50 and US 6)	3-15
Figure 3.11	US 6 Corridor Truck Parking Locations	3-16
Figure 3.12	Eureka Rest Area, US 50	3-17
Figure 3.13	US 50 Corridor Truck Parking Locations	3-18
Figure 3.14	US 93 Unauthorized Truck Parking in Alamo.....	3-19
Figure 3.15	US 93 Corridor Truck Parking Locations	3-20
Figure 3.16	Railroad Pass Truck Stop, Henderson	3-21
Figure 3.17	US 95 Corridor Truck Parking Locations	3-22
Figure 3.18	Wa She Shu Travel Plaza, US 395, Gardnerville.....	3-23

Figure 3.19	US 395 Corridor Truck Parking Locations	3-24
Figure 3.20	Eagles Landing Travel Center (Pilot Flying J) – Mesquite	3-25
Figure 3.21	Golden Gate Travel Plaza Construction – Elko.....	3-26
Figure 3.22	Proposed Loves Travel Stop – Winnemucca	3-26

Acronyms and Abbreviations

NDOT Nevada Department of Transportation

1.0 Introduction

Safe and sufficient truck parking has long been a need in the United States. Whether for a quick stop near an urban area to wait for congestion to clear or a business' delivery window to open, or an overnight break to sleep in the middle of a cross-country trip, truck parking is a key concern for:

- Commercial Motor Vehicle drivers;
- Industries that rely on efficient truck-deliveries;
- Consumers who increasingly order goods online and demand expedited delivery service; and
- Government agencies who regulate the industry, enforce statutes, pass zoning ordinances, and build and maintain highways and parking infrastructure.

In response to this need, the Nevada Department of Transportation (NDOT) is conducting The Nevada Truck Parking Implementation Plan which will develop a plan for expanding, improving, and integrating freight truck parking and truck parking communications systems in response to rising demand, changing hours of service requirements, and safety standards defined in Jason's Law. When implemented, these improvements will provide adequate and safe public truck parking where it's most needed, full-service private truck facilities, and real-time truck parking availability information.

This Implementation Plan consists of the following key tasks:

- Stakeholder Outreach and Coordination;
- Data Collection;
- Needs Assessment;
- Recommendations;
- Implementation Plan; and
- Final Report.

This technical memo is part of the Needs Assessment task, and is focused on identifying and quantifying the existing and future truck parking supply in Nevada.

Just like any other vehicle on the road, trucks need a safe, reliable place to park while waiting for a delivery bay at a distribution center to open, rush hour traffic to subside, a mountain pass to re-open after an incident, or shutting down for an overnight rest break to meet federal requirements. To calculate supply of available parking needed to meet all of these needs, the project team pulled data from a number of resources including:

- NDOT Truck Parking Inventory¹;
- Nevada Rest Areas²;
- Trucker Path³;
- ALLSTAYS⁴;
- American Truck Parking⁵;
- Input from NDOT District engineers and maintenance staff;
- Input from Nevada Highway Patrol Commercial Enforcement Section; and
- Input from the State Freight Advisory Committee.



Authorized Parking: Pilot Flying J – Winnemucca
Source: Cambridge Systematics, Inc.

Locations were then corroborated using either Google Earth/Google Maps or by field reviews conducted by the team.⁶

This document consists of the following sections:

- Section 1 – Introduction;
- Section 2 – An overview of key truck parking attributes;
- Section 3 – An analysis of truck parking capacity at the statewide and corridor level; and
- Appendix A – A complete inventory of truck parking locations in Nevada.

¹ <https://www.nevadadot.com/doing-business/commercial-vehicles/truck-parking>

² <https://www.nevadadot.com/travel-info/rest-areas-welcome-centers>

³ <https://truckerpath.com/>

⁴ <https://allstays.com/>

⁵ <http://www.americantruckparking.com/>

⁶ Note that 100 Walmart parking locations are identified in the map but shown as “0” spaces and not included in the capacity counts as their status and availability for use by truckers varies considerably from location to location.

2.0 Parking Attributes

The total truck parking inventory can be sub-divided based on a number of different attributes. This section briefly describes the key attributes used to differentiate between types of parking.

2.1 Authorized and Unauthorized

Authorized parking lots are locations where trucks are explicitly allowed to park. These can be public or private locations and can have a range of amenities (e.g., bathrooms, showers, food options, fuel, wireless internet) and security (e.g., lighting, fencing) or nothing more than an area designated for parking.

Unauthorized locations are places where trucks routinely park, but the area is not designed for truck parking and long-term truck parking is not legal. It is important to note that while similar from a legal standpoint, from a practical approach not all unauthorized parking is the same. For example, trucks parking on the side of a busy highway in a small town and trucks parking in a gravel area at the end of a dead-end road have different safety, infrastructure, and community impacts. An example of unauthorized parking is shown in Figure 2.1.

While this analysis attempted to identify commonly used unauthorized parking locations in the state where several trucks or more might be parked, it did not identify *all* possible locations with unauthorized truck parking activity since this list is potentially endless and shifting constantly.

Figure 2.1 Unauthorized Parking, I-15 Valley of Fire Off-Ramp Near Moapa Paiute Travel Plaza



Source: Cambridge Systematics, Inc.

2.2 Paved and Unpaved

Paved lots are those where asphalt or concrete surfaces cover the locations where trucks are parking. While trucks can and do use both paved and unpaved areas to park, the information is useful when considering costs to enhance the facility and in operations and maintenance planning.

2.3 Marked and Unmarked

This criteria identifies if the parking area is striped for truck parking. Stripes help drivers know where parking is permitted at a facility, and allow for a more precise estimate of site capacity. Marked lots are typically paved, though there may be additional parking available adjacent to a paved lot that is unmarked and unpaved. Unmarked lots may be paved or unpaved.

2.4 Private and Public

Public facilities include publically owned and operated rest areas, typically available for auto and truck use; truck inspection stations that either offer designated parking or allow truck parking when not in use; and designated truck pull-out areas that may or may not be paved and typically don't offer any services. Some public areas may or may not formally allow truck parking, such as pull-outs for brake check areas and for snow chain installation and removal.

Many private businesses offer truck parking as a service to drivers to attract their business and the revenue associated with selling fuel, food, and other commodities and services. The most common are privately owned and operated truck travel plazas, but others include hotels, casinos, convenience stores, restaurants, and other facilities.

An example of a public, authorized, unpaved, and unmarked lot is shown in Figure 2.2.

Figure 2.2 Authorized, Public, Unpaved, Unmarked Spaces at Truck Parking Pull-out (I-15, Top of Mormon Mesa)



Source: Cambridge Systematics, Inc.

3.0 Truck Parking Capacity

The following sections provide a summary of state level truck parking and then explore truck parking on each of the critical freight corridors in the state.

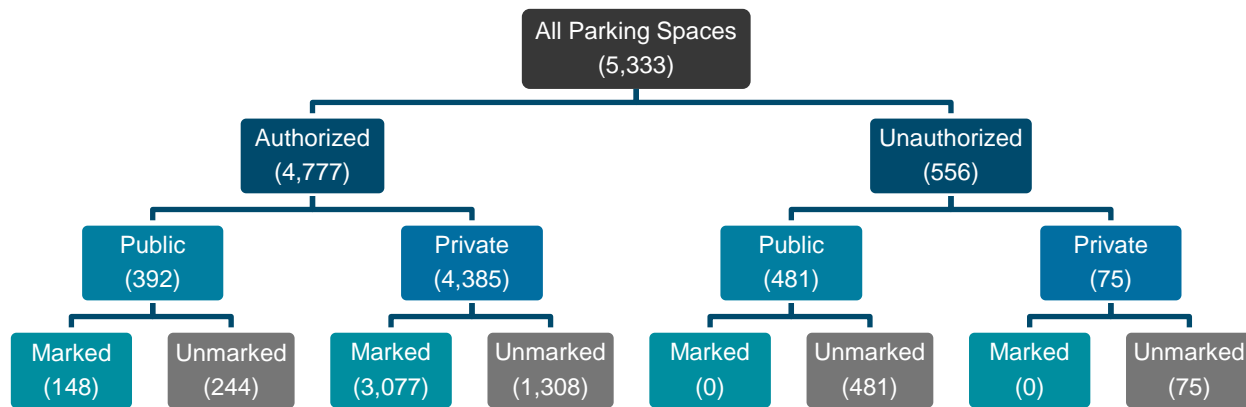
3.1 Statewide Capacity

Including private truck stops and other businesses that cater to truck drivers, public rest areas, and commonly used unauthorized locations such as brake check areas, inspection sites, and roadside unpaved areas, there are approximately 5,333 truck parking spaces at 170 locations in Nevada.⁷ Of these, approximately 4,777 spaces (90 percent) at 107 locations offer authorized parking with the remaining 511 (10 percent) unauthorized parking spaces spread between 63 separate locations. There are 20 private truck stops in the state with at least 100 parking spaces each which drives the large difference in parking spaces per location.⁸ The largest truck parking location in the state is the Petro Shopping Center in Sparks with 400 spaces. A list of all truck parking locations in the state is found in Appendix A.

Figure 3.1 below provides a flowchart showing the breakdown in spaces by the various attributes described above. Marked spaces at privately operated, authorized truck parking locations comprise the greatest group, followed by a large number of unmarked spaces at privately operated, authorized locations.

Truck parking locations in Nevada are shown statewide in Figure 3.2 differentiated by authorized and unauthorized locations as well as the number of spaces available. The greatest concentrations of authorized parking are in the southern Nevada/Las Vegas and Northwest Nevada/Reno-Sparks-Carson City metropolitan areas. Truck parking in these regions of the state are shown in Figure 3.3 and Figure 3.4.

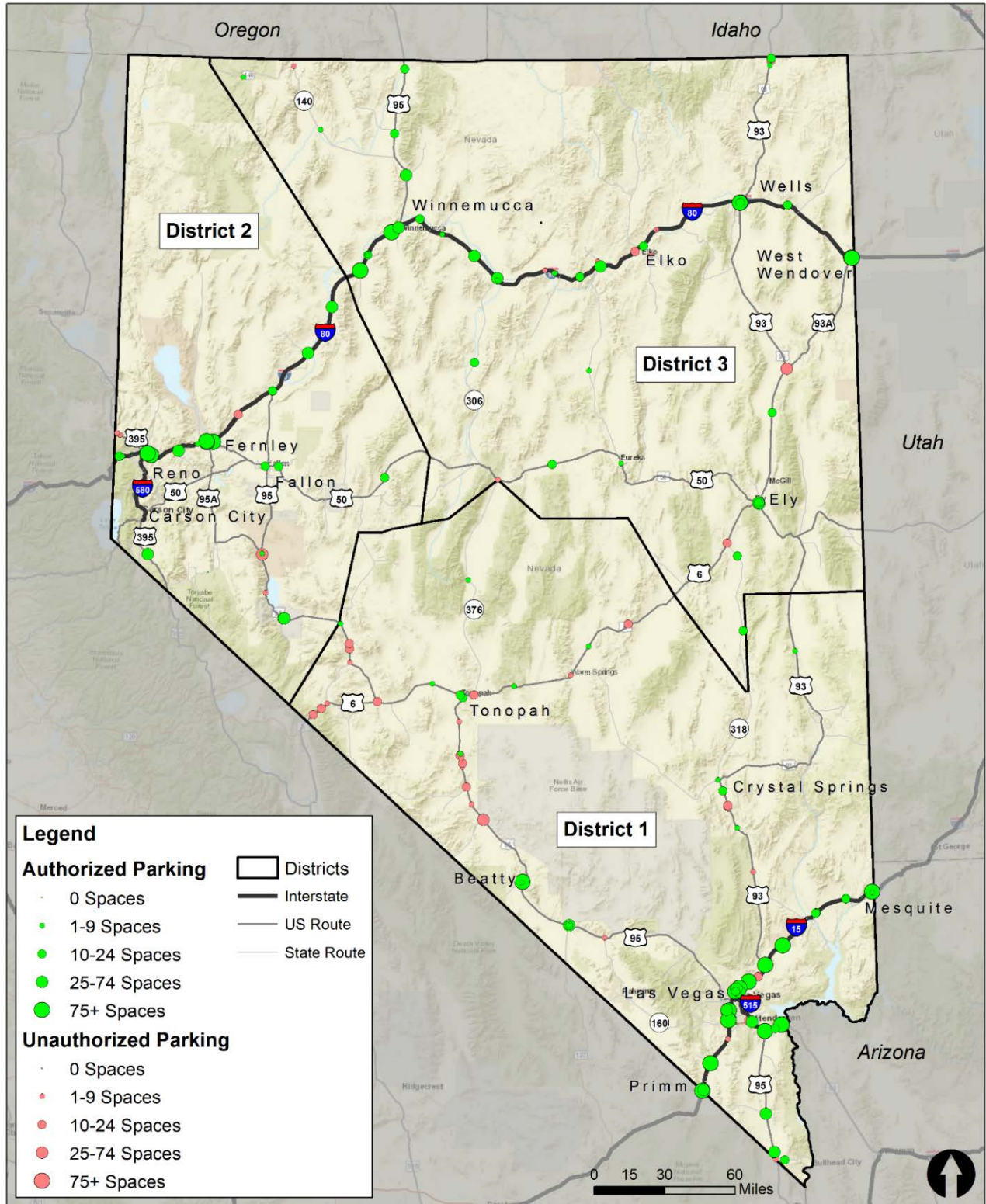
Figure 3.1 Truck Parking Capacity Categories



⁷ Note, this analysis generally treats parking on opposite sides of a divided highway as separate locations

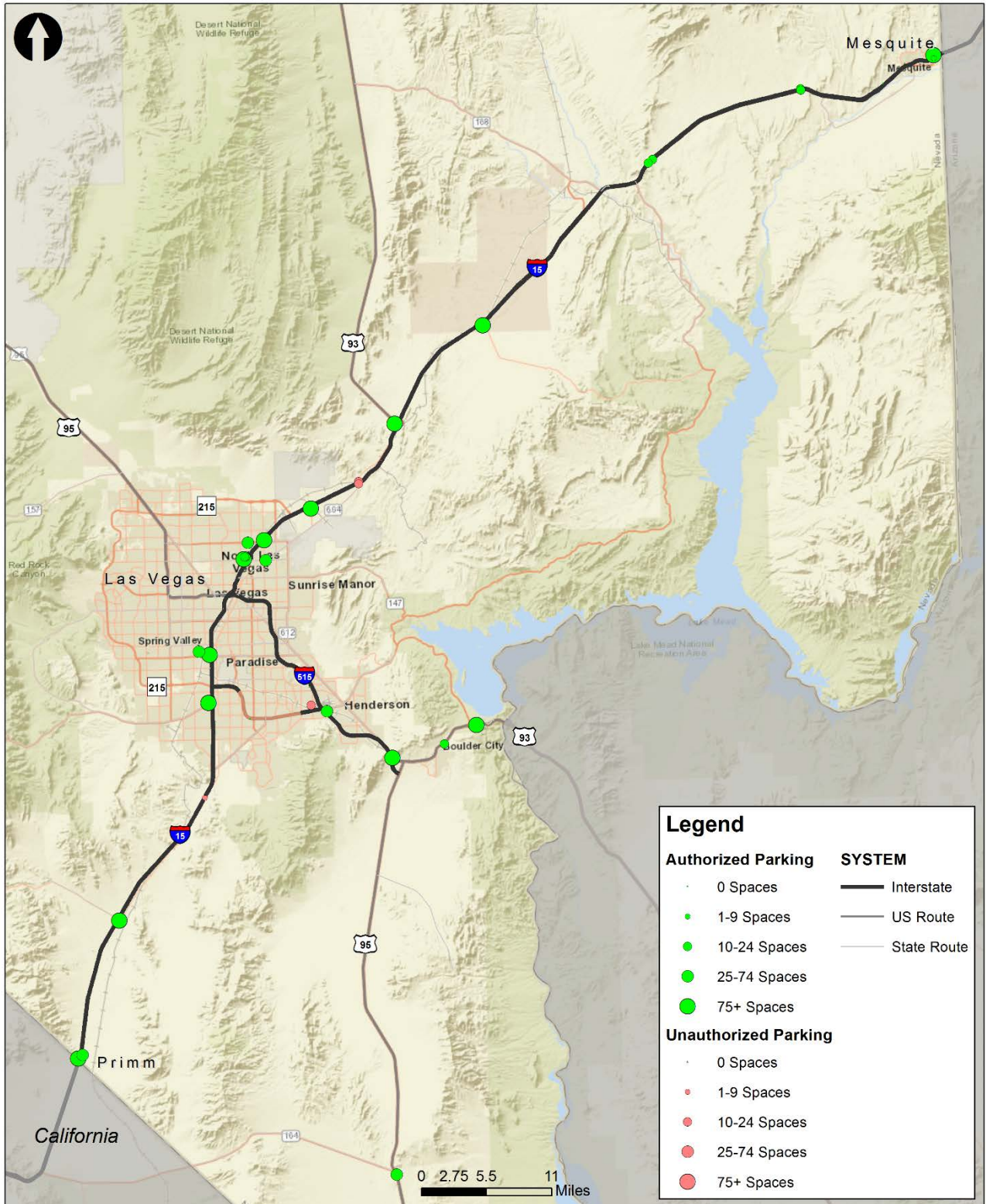
⁸ 43.5 spaces/location for authorized parking, 8.1 spaces/location for unauthorized parking

Figure 3.2 Nevada Truck Parking Locations



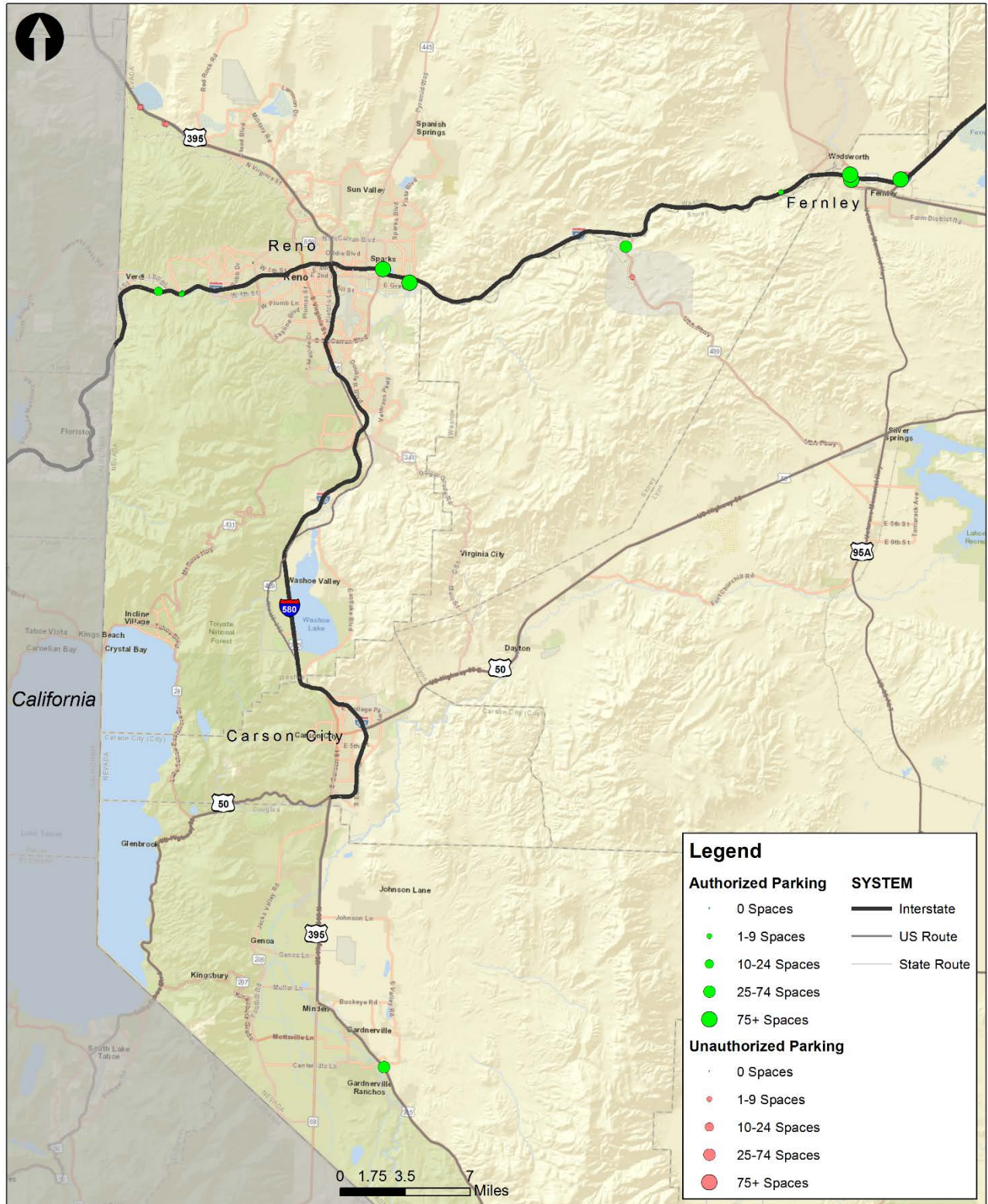
Source: Note, locations with 0 spaces are shown to provide context for potential future expansion.

Figure 3.3 Southern Nevada Detail – Nevada Truck Parking Locations



Source: NDOT, Analysis by Cambridge Systematics, 2018.

Figure 3.4 Northwestern Nevada Detail – Nevada Truck Parking Locations



Source: NDOT, Analysis by Cambridge Systematics, 2018.

3.2 Key Freight Corridors - Truck Parking Capacity

Based on the recently completed Nevada State Freight Plan and in consultation with NDOT, the supply and demand analysis was limited to critical freight corridors in Nevada. Table 3.1 provides an overview of parking in these corridors; a more detailed discussion of truck parking capacity in each corridor is discussed below. It is important to note that corridors often overlap, sharing a route for several miles. Parking located where two routes overlap or intersect may be counted in multiple corridors in the below discussion.

Table 3.1 Freight Corridor Truck Parking Capacity Summary

Corridor	Direction	Corridor Length (mi)	Parking Locations	Authorized Spaces	Unauthorized Spaces	Total Spaces
I-15 (and I-215)	North-South	125	29	1,555	68	1,623
I-80	East-West	410	50	2,149	66	2,215
U.S. 6	East-West	306	20	164	95	259
U.S. 50	East-West	409	12	372	8	380
U.S. 93/93A and SR 318	North-South	520	33	1,096	115	1,211
U.S. 95/95A	North-South	647	54	1,156	266	1,422
U.S. 395 (and I-580)	North-South	85	5	30	16	46

Source: NDOT, Analysis by Cambridge Systematics, 2018.

3.2.1 I-15 Corridor

The I-15 corridor traverses Southern Nevada through the most heavily populated portion of the state, from Primm at the California border to Mesquite at the Arizona border, approximately 125 miles to the northeast. I-15 is a key trade corridor and vital linkage in the economies of the western U.S. and the entire nation, with some of the largest economic and population centers relying on the I-15 for inter-state and inter-regional mobility. Anchored in the south by Southern California, the I-15 Corridor is a principal corridor linking coastal ports to inland population centers and provides connection to other major east-west highways, including I-10, I-40, I-70, and I-80. The Bruce Woodbury Beltway (I-215 and Clark County 215) serves as a beltway around the north, west, and south of Las Vegas metropolitan area. I-515 is collocated with US 93 and US 95; parking along I-515 will be discussed as part of the US 93 and US 95 corridors.

The largest facility on the corridor is Morton's Valero Travel Plaza in North Las Vegas with approximately 225 spaces, shown in Figure 3.5. Table 3.2 provides an overview of parking in the I-15 corridor and Figure 3.6 shows the truck parking locations. The greatest concentration of parking is in the densely populated urban area from Blue Diamond Road to the Las Vegas Speedway, with approximately 956 truck parking spaces at 10 private facilities.

Figure 3.5 Morton’s Valero Travel Plaza, Las Vegas, NV



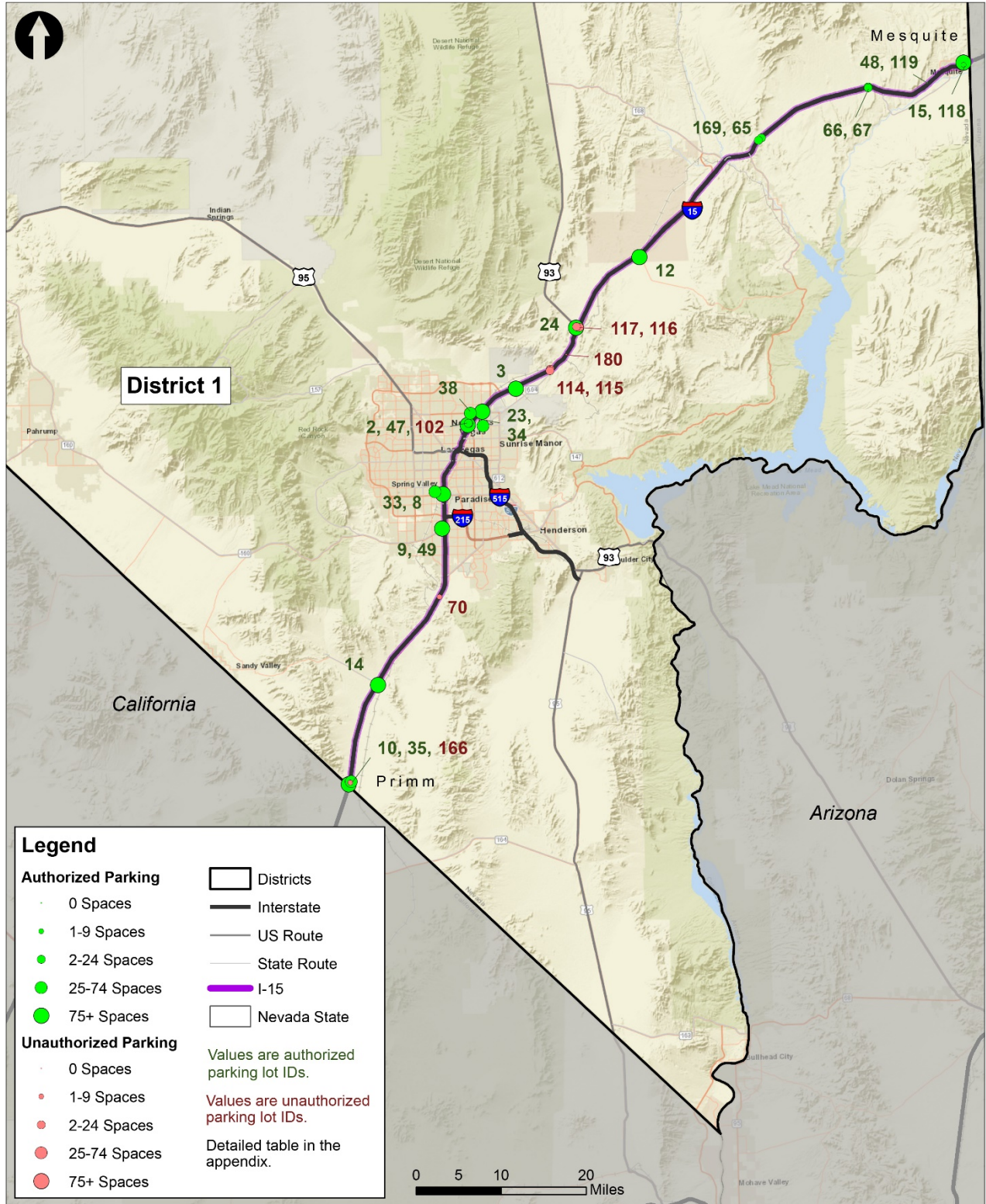
Source: Dan Andersen

Table 3.2 I-15 Corridor Truck Parking Capacity

Attributes	Parking Locations	Parking Spaces	Private/Public Spaces	Paved/Unpaved Spaces
Authorized	22	1,555	1,506/49	1,515/40
Unauthorized	7	68	10/58	0/68
Total	29	1,623	1,516/107	1,515/108

Source: NDOT, Analysis by Cambridge Systematics, 2018.

Figure 3.6 I-15 Corridor Truck Parking Locations



Source: NDOT, Analysis by Cambridge Systematics, 2018.

3.2.2 I-80 Corridor

I-80 stretches approximately 410 miles across northern Nevada between the California border west of Reno and West Wendover and the Utah border. McCarran Boulevard (SR 659) provides a beltway around Reno and Sparks. I-80 provides a critical east-west connection between the San Francisco Bay area and the Intermountain West and Midwest including major metropolitan areas such as Salt Lake City, Denver, Kansas City, Chicago, Minneapolis, and points further east.

Table 3.3 provides an overview of parking in the corridor. The largest parking facility in the western segment, and the State, is a Petro Shopping Center in Sparks with approximately 400 spaces, shown in Figure 3.7. The largest facility in the eastern segment is the Pilot Travel Center in West Wendover with approximately 125 spaces. Figure 3.8 shows the western portion of the corridor from California to US 95 in Winnemucca and Figure 3.9 shows the corridor from Winnemucca east to Utah. Concentrations of truck parking supply exist on the eastern edge of Sparks, in Fernley, Winnemucca (intersection with US 95) and Wells (intersection with US 93).

Table 3.3 I-80 Corridor Parking Capacity

Attributes	Parking Locations	Parking Spaces	Private/Public Spaces	Paved/Unpaved Spaces
Authorized	37	2,149	1,984/165	2,034/115
Unauthorized	13	66	5/61	11/55
Total	50	2,215	1,989/226	2,045/170

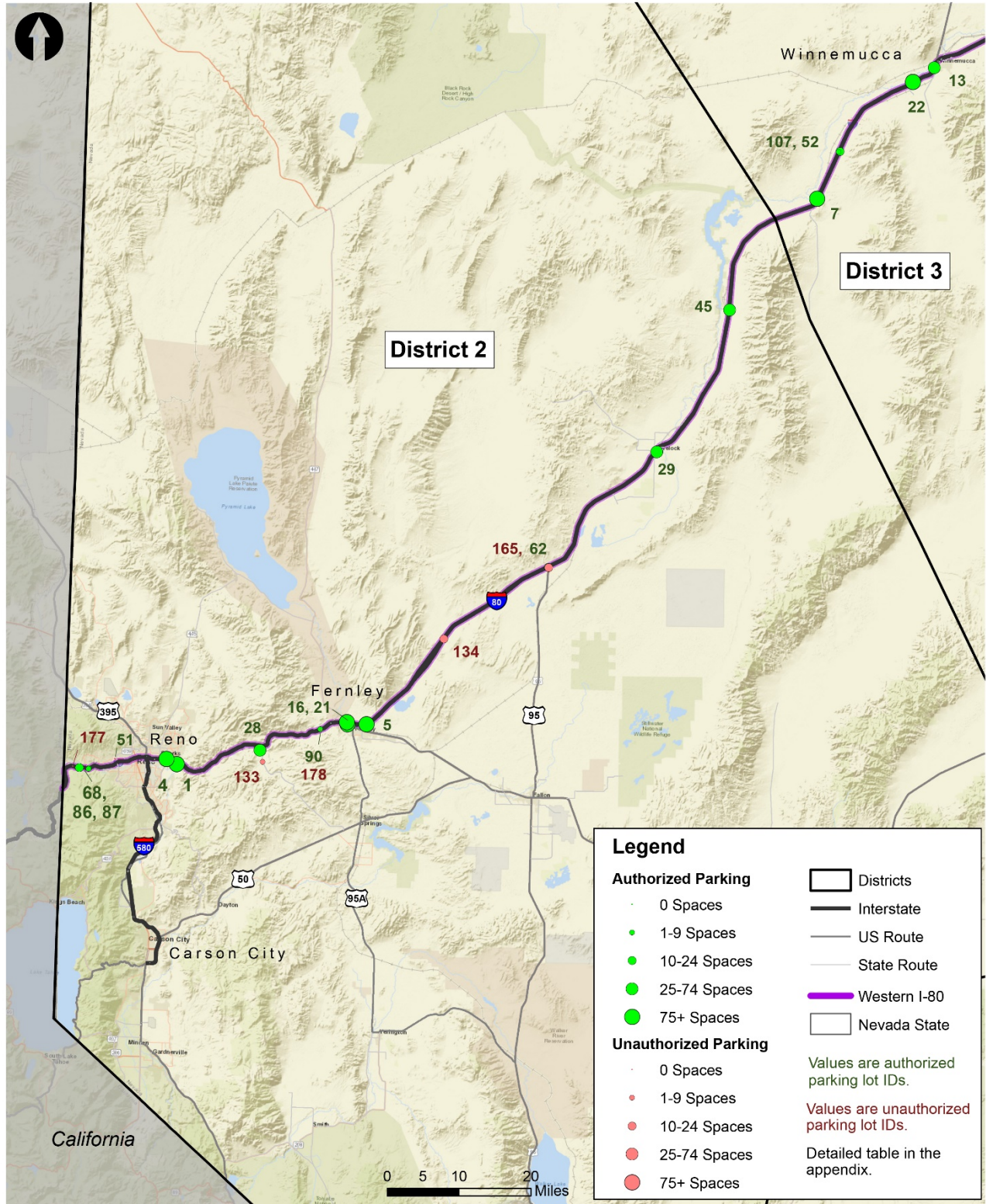
Source: NDOT, Analysis by Cambridge Systematics, 2018.

Figure 3.7 Petro Shopping Center, Sparks, NV



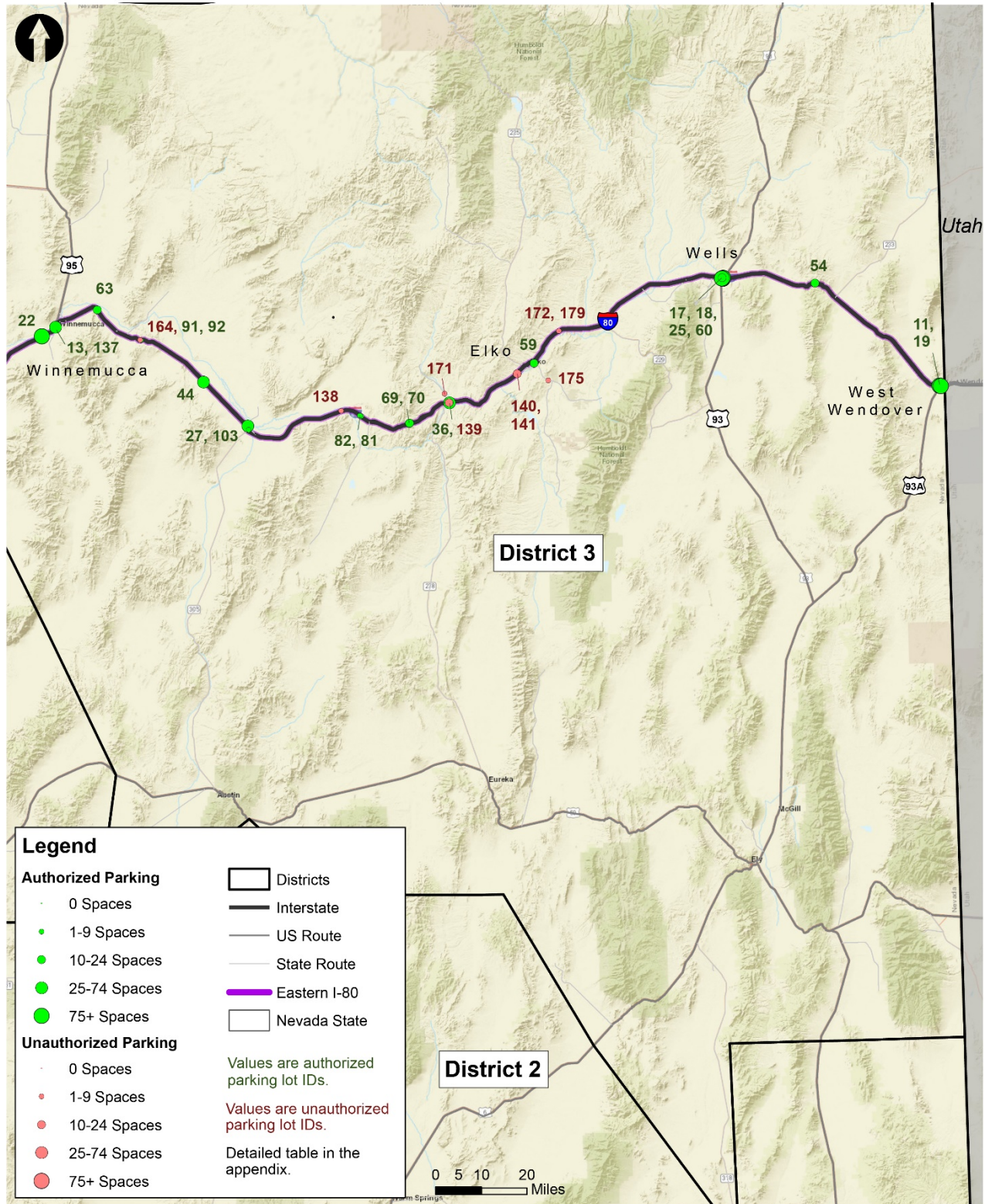
Source: Cambridge Systematics, Inc.

Figure 3.8 Western I-80 Truck Parking Locations



Source: NDOT, Analysis by Cambridge Systematics, 2018.

Figure 3.9 Eastern I-80 Truck Parking Locations



Source: NDOT, Analysis by Cambridge Systematics, 2018.

3.2.3 US 6 Corridor

US 6 stretches for approximately 306 miles across central Nevada, from Boundary Peak near the California border to Baker near the Utah border. The highway crosses a series of desert mountain ranges and valleys. It passes through the two small cities of Tonopah and Ely, and is collocated with US 95 (the most heavily traveled portion of US 6) and US 50, as well as with smaller state routes.

Table 3.4 provides an overview of parking in the corridor. Nearly half of the truck parking supply along this route comes from three parking facilities in Ely (where the route intersects with US 90 and US 50), with the largest two facilities each having 50 spaces. Figure 3.10 shows the R Place Food truck stop, one of the three parking options on US 6 in Ely. Figure 3.11 is a map of all parking locations in the corridor.

Table 3.4 US 6 Corridor Parking Capacity

Attributes	Parking Locations	Parking Spaces	Private/Public Spaces	Paved/Unpaved Spaces
Authorized	8	164	148/16	68/96
Unauthorized	12	95	0/95	28/67
Total	20	259	148/111	93/163

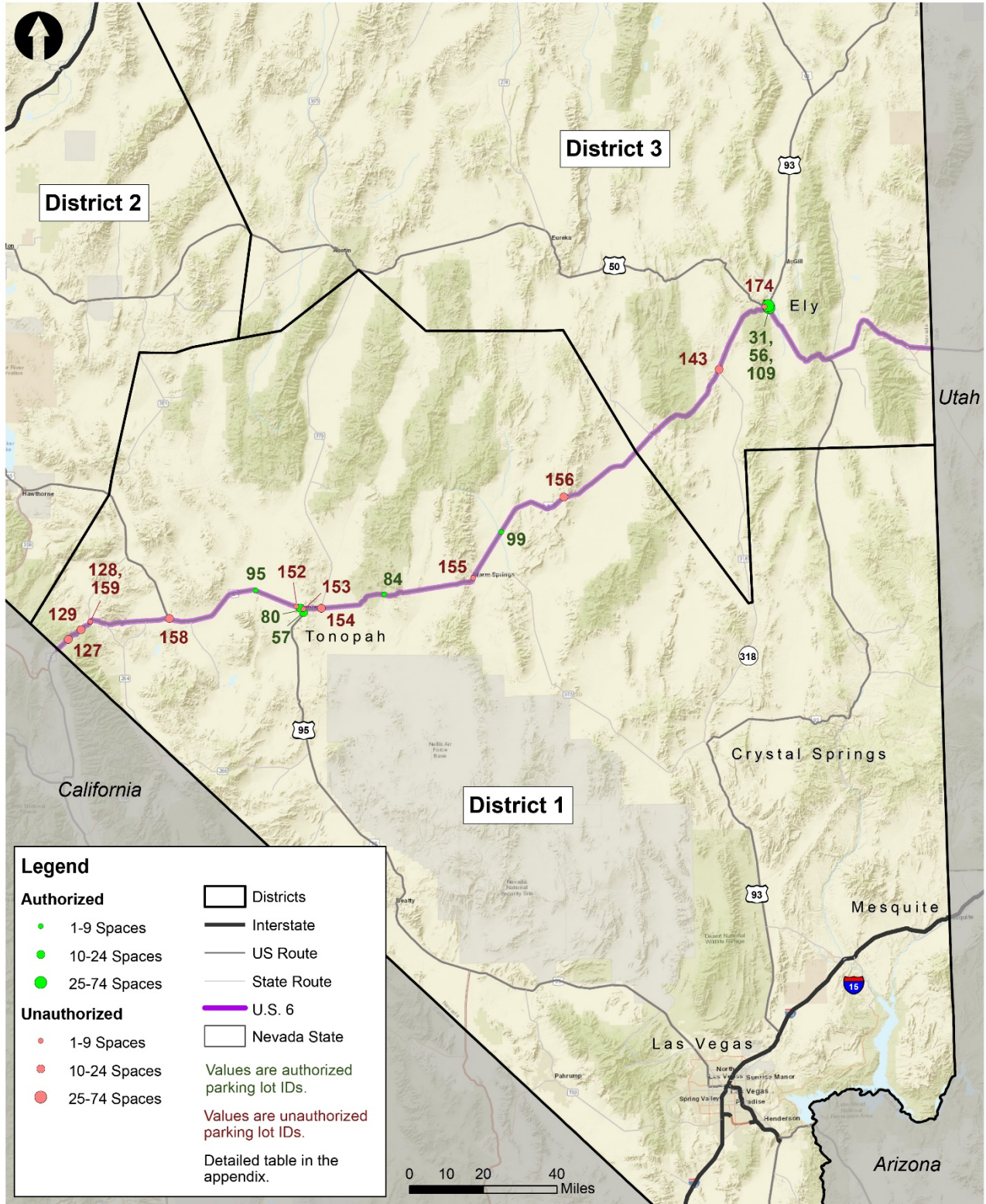
Source: NDOT, Analysis by Cambridge Systematics, 2018.

Figure 3.10 R Place Food (US 50 and US 6)



Source: Google Maps

Figure 3.11 US 6 Corridor Truck Parking Locations



Source: NDOT, Analysis by Cambridge Systematics, 2018.

3.2.4 US 50 Corridor

US 50 is a 409 mile east-west corridor that runs through the central part of the state. On the west side, it enters Nevada at Lake Tahoe, and on the east side, it enters Utah near Baker. Nicknamed the “Loneliest Road in America”, US 50 traverses varied terrain including mountain ranges and desert valleys and passes through Carson City, Fallon, and Ely. There is one alternate route (US 50A) which runs from Silver Springs north to Fernley (concurrent with US 95A), then turns southeast and rejoins US 50 west of Fallon.

Table 3.5 provides an overview of parking in the corridor. The majority of truck parking is found in the western segment in Fernley. The Flying J Travel Center has approximately 100 spaces and the Pilot Travel Center has approximately 100 spaces. On the eastern segment, the Silver Sage Travel Stop and Love’s Ely located in Ely provide approximately 50 spaces each. There are no parking opportunities on US 50 between the California border and Fallon. Figure 3.12 shows the Eureka Rest Area, one of the public truck parking options on this corridor. Figure 3.13 illustrates all of the truck parking locations in the corridor.

Table 3.5 US 50 Corridor Parking Capacity

Attributes	Parking Locations	Parking Spaces	Private/Public Spaces	Paved/Unpaved Spaces
Authorized	10	372	358/14	304/68
Unauthorized	2	8	0/8	3/5
Total	12	380	358/22	307/73

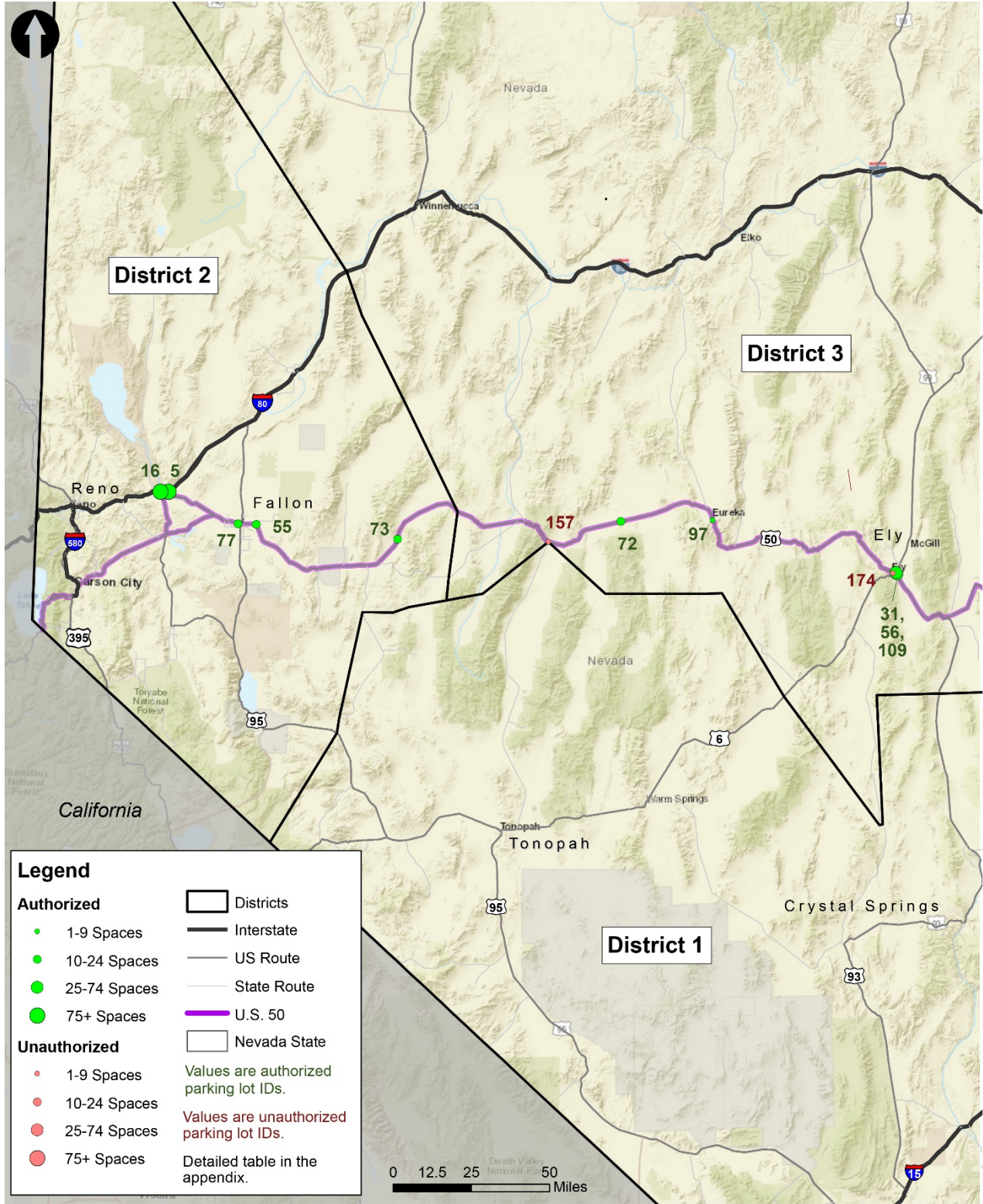
Source: NDOT, Analysis by Cambridge Systematics, 2018.

Figure 3.12 Eureka Rest Area, US 50



Source: Google Maps

Figure 3.13 US 50 Corridor Truck Parking Locations



Source: NDOT, Analysis by Cambridge Systematics, 2018.

3.2.5 US 93 Corridor

US 93 is a major north-south corridor that runs in the eastern part of Nevada. It spans 520 miles, stretching from the Arizona border in the south, through Las Vegas and Ely, to the Idaho border in the north. Within the Las Vegas metropolitan area, it is collocated with I-11, I-515, and/or I-15. At Crystal Springs, State Route 318 continues straight north while US 93 turns east before returning north. SR 318 is included as part of the corridor and is a key truck route in the state—NDOT data indicates that it is the preferred route over US 93 for vehicles in the corridor.⁹

Both US 93 and State Route 318 continue north with SR 318 ending at US 6 and US 93 joining US 50/US 6 between Majors Place and Ely. At Lages Station, US 93 splits into two forks with US 93A traveling northeast and ending at I-80 in West Wendover. US 93 continues north through Wells and an interchange with I-80 until crossing into Idaho at Jackpot.

Truck parking for US 93, US 93A, and SR 318 are included in Table 3.6. Truck parking supply is fairly abundant along this major corridor, with over 1,200 spaces, however the majority of these are located at junctions with I-15 and I-80. The more rural portions of US 93 have few spaces, some of which is found at unauthorized pull-outs, as shown in Figure 3.14 in Alamo. The largest parking facility in the southern segment is the Hoover Dam Lodge Truck Parking, with approximately 200 spaces. The largest facility in the northern segment is the Pilot Travel Center in Wendover with approximately 125 spaces. Table 3.6 and Figure 3.15 provide an overview of truck parking in this corridor.

The southern segment of US 93 between Arizona and Las Vegas became part of I-11 in 2018, highlighting the need to supply adequate truck parking in the corridor.

Table 3.6 US 93 Corridor Parking Capacity

Attributes	Parking Locations	Parking Spaces	Private/Public Spaces	Paved/Unpaved Spaces
Authorized	22	1,096	1,038/58	697/399
Unauthorized	11	115	10/105	35/80
Total	33	1,211	1,048/163	732/479

Source: NDOT, Analysis by Cambridge Systematics, 2018.

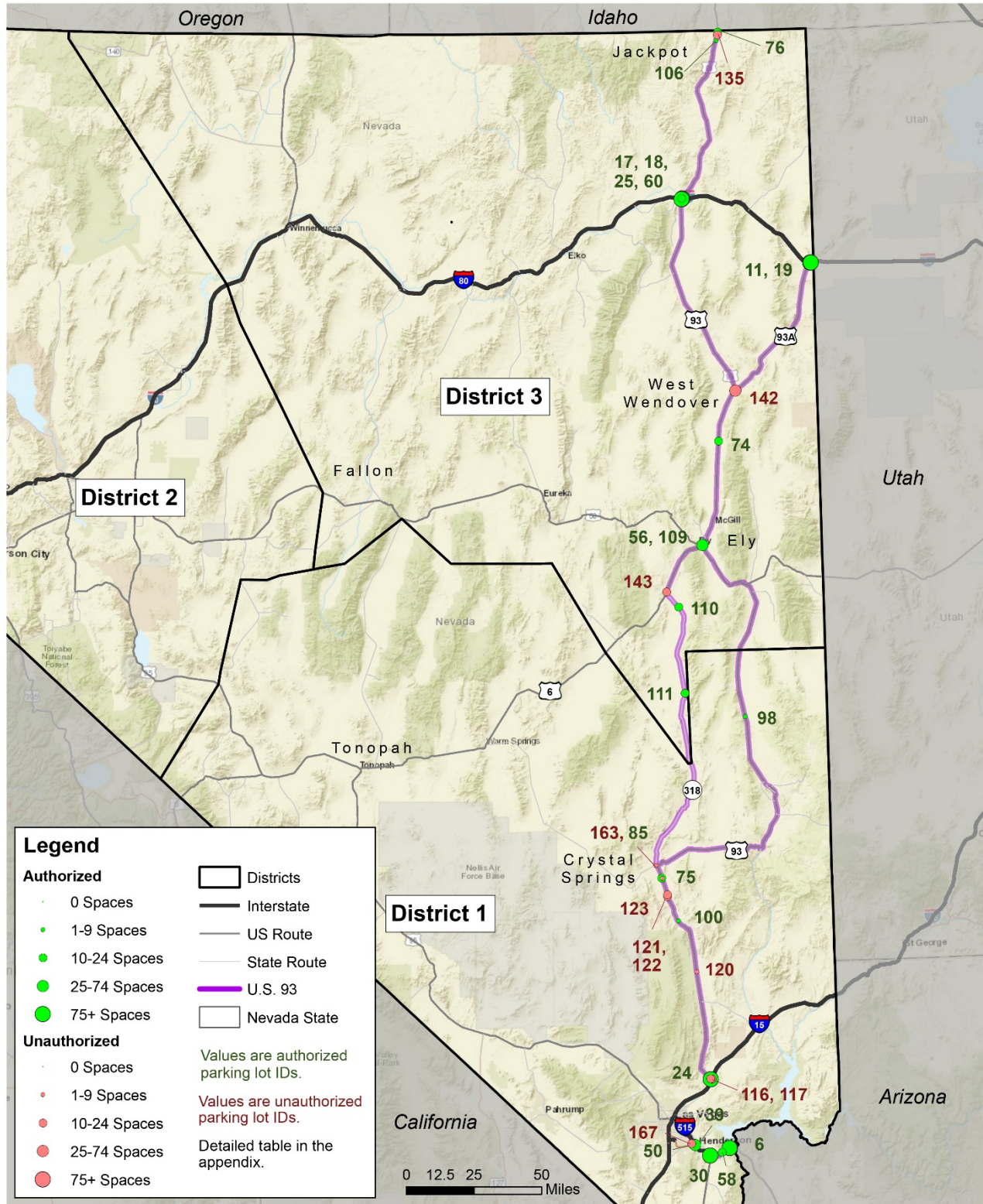
Figure 3.14 US 93 Unauthorized Truck Parking in Alamo



Source: Dan Andersen

⁹ Approximately 350 AADTT for SR 318 from Crystal Springs to US 6 versus approximately 35 AADTT on US 93 from Crystal Springs to Panaca. Count of 4+ axle trucks.

Figure 3.15 US 93 Corridor Truck Parking Locations



Source: NDOT, Analysis by Cambridge Systematics, 2018.

3.2.6 US 95 Corridor

US 95 is a major north-south corridor that runs in the western part of Nevada, stretching for approximately 647 miles. At the south end, it enters Nevada from the California border, passes through the Las Vegas metropolitan area, then continues northward until it reaches the Oregon border. US 95 runs concurrent with I-11, I-515, and US 93 from southeast of Henderson to I-15. From I-15 to I-80 much of US 95 is the preferred future I-11 corridor. Between Tonopah and Coaldale, US 95 joins US 6. At Schurz, the highway splits into two; the western fork continues toward Fernley while the eastern fork continues to I-80 north of Fallon. US 95 runs concurrently with I-80 east to Winnemucca before turning north and entering Idaho.

This major corridor has over 1,500 truck parking spaces. Truck parking supply is spread throughout the corridor, but the largest facilities tend to be where many highways converge. In the northern segment, the largest parking facilities are the Flying J Travel Center in Fernley (100 spaces), the Pilot Travel Center in Fernley (100 spaces), and the TA Travel Center of America in Mill City (152 spaces), where US 95 is collocated with I-80. In the central segment, the largest facility is the Stagecoach Hotel & Casino in Beatty, with approximately 100 spaces. In the southern segment, the largest facility is the Railroad Pass Hotel & Casino in Henderson with 94 spaces, shown in Figure 3.16. Table 3.7 provides a summary of the corridor truck parking supply and Figure 3.17 shows the locations of these facilities.

Table 3.7 US 95 Corridor Parking Capacity

Attributes	Parking Locations	Parking Spaces	Private/Public Spaces	Paved/Unpaved Spaces
Authorized	31	1,156	1,059/97	965/191
Unauthorized	23	266	60/206	120/146
Total	54	1,422	1,119/303	1,085/337

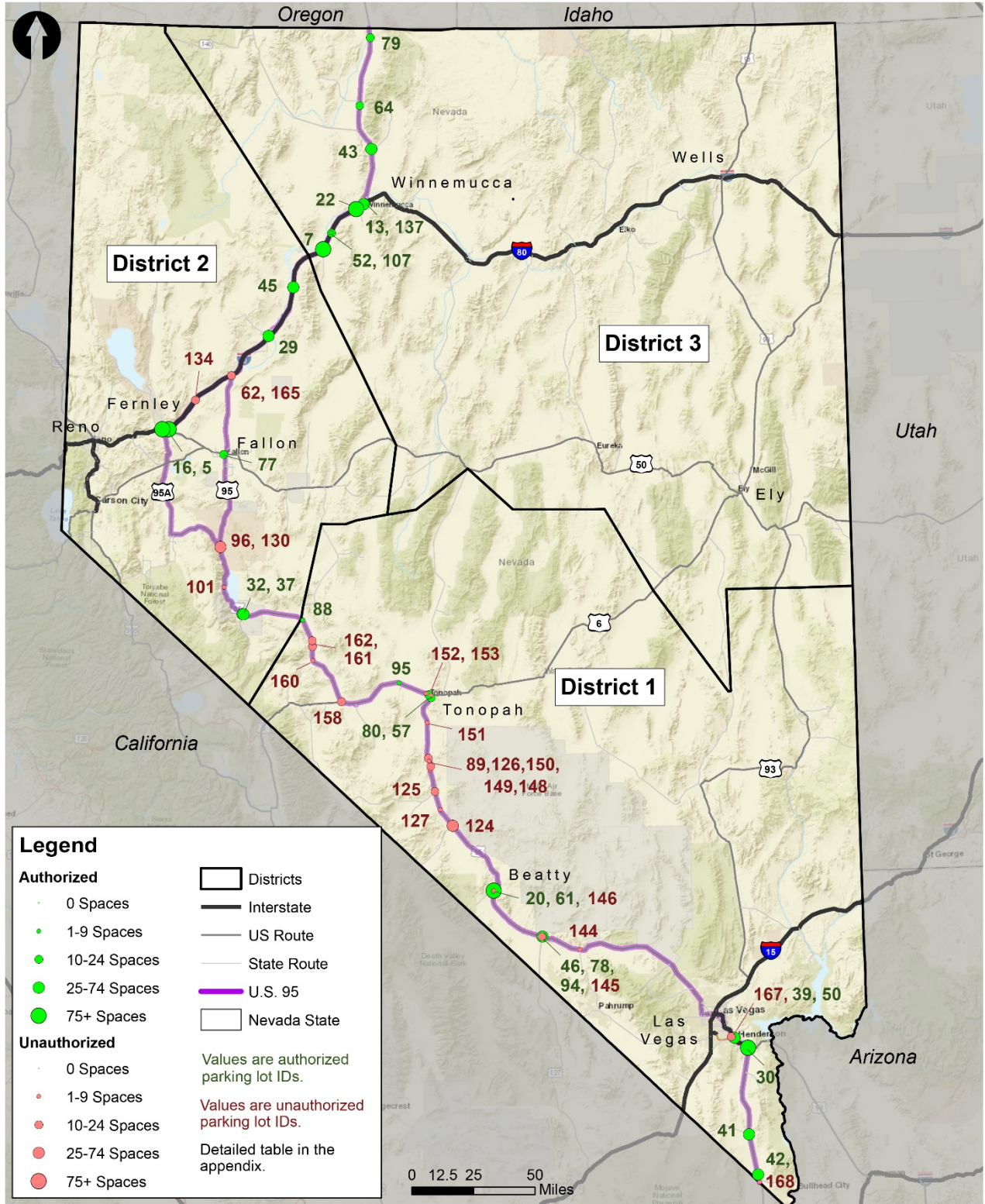
Source: NDOT, Analysis by Cambridge Systematics, 2018.

Figure 3.16 Railroad Pass Truck Stop, Henderson



Source: Cambridge Systematics, Inc.

Figure 3.17 US 95 Corridor Truck Parking Locations



Source: NDOT, Analysis by Cambridge Systematics, 2018.

3.2.7 US 395

US 395 is an 85 mile north-south highway on the western edge of Nevada that runs along the Sierra Nevada mountain range. The northern segment enters Nevada from the California border at Cold Springs, passing through Reno and Carson City, and the southern segment ends near Topaz Lake at the California border. It is collocated with I-580 between Reno and Carson City, and I-580 is included in this analysis. US 395 offers an alternative to I-5 for trucks traveling between southern California and Reno and points north and east.

There are fewer than 50 total truck parking spaces located on US 395, though additional facilities are available on I-80 in Sparks, just east of the corridor. Two-thirds of the truck parking supply (30 parking spaces) is found at the Wa She Shu Travel Plaza facility in Gardnerville, shown in Figure 3.18. Other unauthorized parking spots can be found at truck inspection stations. Table 3.8 summarizes truck parking in this corridor and Figure 3.19 highlights truck parking locations.

Table 3.8 US 395 Corridor Parking Capacity

Attributes	Parking Locations	Parking Spaces	Private/Public Spaces	Paved/Unpaved Spaces
Authorized	1	30	30/0	30/0
Unauthorized	4	16	0/16	5/11
Total	5	46	30/16	35/11

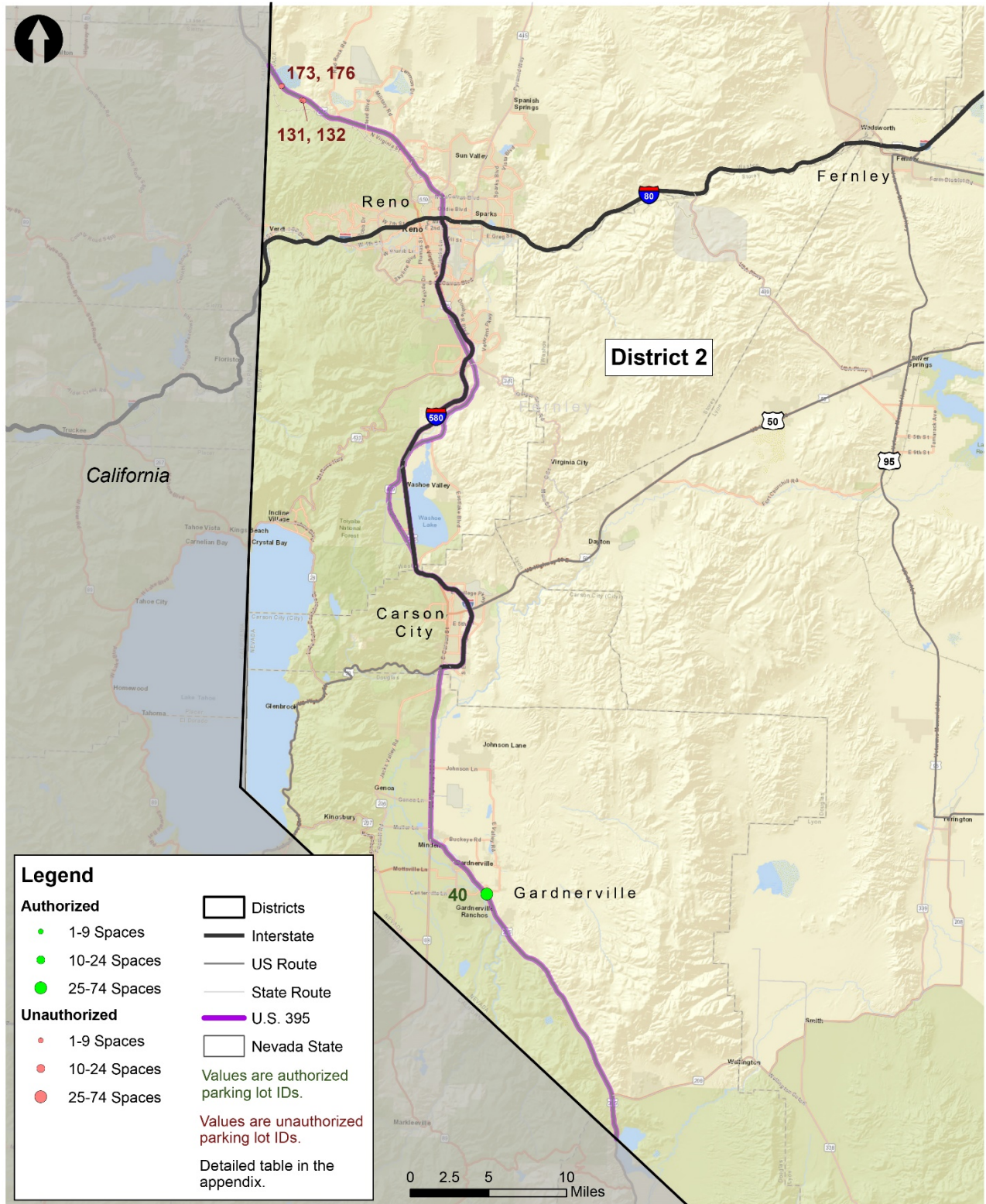
Source: NDOT, Analysis by Cambridge Systematics, 2018.

Figure 3.18 Wa She Shu Travel Plaza, US 395, Gardnerville



Source: Cambridge Systematics, Inc.

Figure 3.19 US 395 Corridor Truck Parking Locations



Source: NDOT, Analysis by Cambridge Systematics, 2018.

3.3 Future Capacity

In addition to existing capacity, there are three known projects which will expand the amount of authorized parking in the state. Two projects are already under construction, the third is proposed only:

- Eagles Landing Travel Center – I-15 at Lower Flat Top Drive (west side of Mesquite), shown in Figure 3.20. This facility will include a Pilot Flying J truck stop and is anticipated to add approximately 80 truck parking spaces once complete in the fall of 2018.¹⁰
- Golden Gate Travel Plaza – on SR 535 at Exit 298 of I-80 (west side of Elko), shown in Figure 3.21. There are approximately 7.8 acres designated for the truck stop facility.¹¹ There is no known completion date.
- Loves Travel Stop – Proposed construction on SR 289 at exit 176 of I-80 (west side of Winnemucca), shown in Figure 3.22. Details about this project are unknown.

Locations and pictures of construction are shown in the figures below.

Figure 3.20 Eagles Landing Travel Center (Pilot Flying J) – Mesquite



Source: Cambridge Systematics, Inc. Photograph taken September 2018.

¹⁰ <http://mesquitelocalnews.com/2018/01/eagles-landing-breaks-ground/>

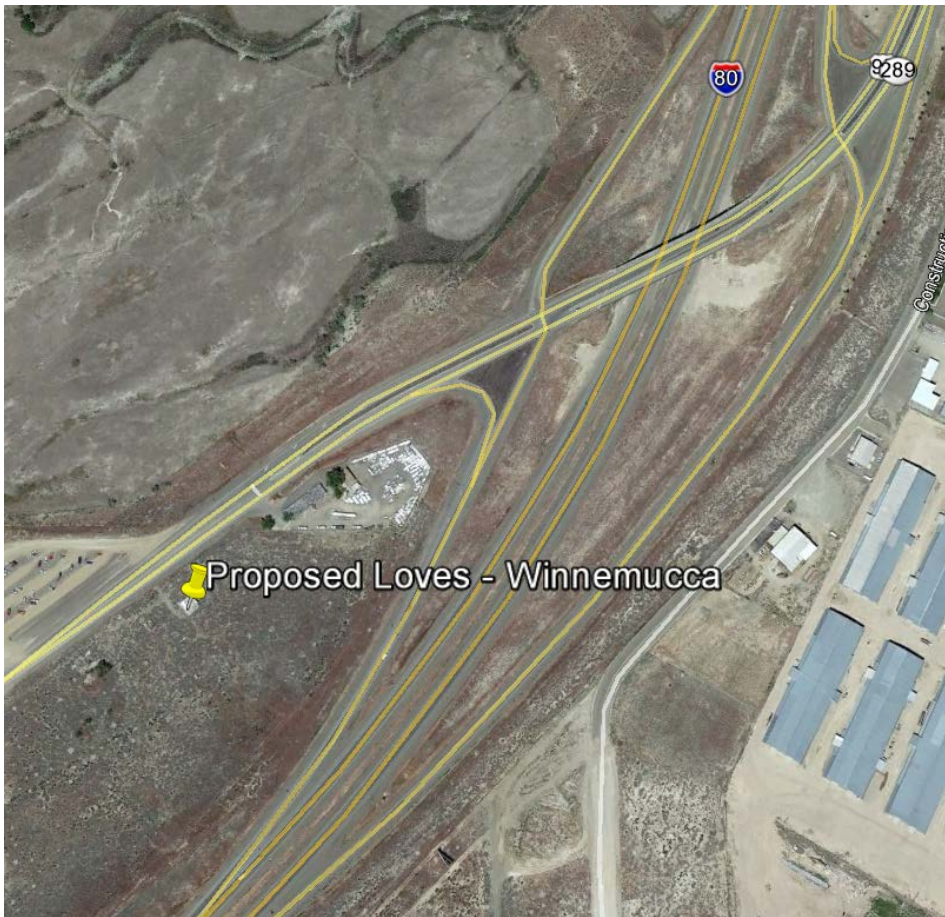
¹¹ https://elkodaily.com/news/local/golden-gate-plans-elko-truck-stop-with-small-casino/article_efbeda5d-244d-5c6d-9819-cc953cb33034.html

Figure 3.21 Golden Gate Travel Plaza Construction – Elko



Source: Cambridge Systematics, Inc. Photograph taken July 2018.

Figure 3.22 Proposed Loves Travel Stop – Winnemucca



Source: Google Earth

Appendix A. Truck Parking Capacity

Table A.1 Truck Parking Capacity Details – Sorted by Number of Spaces

ID	Site/Address	Highway	Authorized	Public	Paved	Marked	Spaces	Amenities
1	Petro Shopping Center - Sparks 1950 E Greg St, Sparks, NV 89431	I-80	x		x	x	400	lighting, fuel, restroom, food, shower
2	Morton's Truck Stop 1000 E Cheyenne Ave, North Las Vegas, NV 89030	I-15	x		x	x	225	lighting, fuel, restroom, food, shower
3	Petro - North Las Vegas 6595 N Hollywood Blvd, Las Vegas, NV 89115	I-15	x		x	x	207	lighting, fuel, restroom, food, shower, repairs, laundry, wifi
4	TA Travel Center of America - Sparks 200 N McCarran Blvd, Sparks, NV 89431	I-80	x		x	x	200	lighting, fuel, restroom, food, shower
6	Hoover Dam Lodge Truck Parking 93 US-93, Boulder City, NV 89005	US 93	x				200	lighting
7	TA Travel Center of America - Mill City 6000 E. Frontage Road, Mill City, NV, 89418	I-80	x		x	x	152	lighting, fuel, restroom, food, shower
8	Wild West Truck Stop 4830 Procyon St, Las Vegas, NV 89103	I-15	x		x	x	150	lighting, restroom, food, shower, repairs, scales, laundry
9	TA Travel Center of America - Las Vegas 8050 Dean Martin Dr, Las Vegas, NV 89139	I-15	x		x	x	144	lighting, fuel, restroom, food, shower, repairs, scales, truck wash
10	Flying J Truck Stop - Primm 115 W Primm Blvd, Jean, NV 89019	I-15	x		x	x	125	lighting, fuel, restroom, food, shower
11	Pilot Travel Center - Wendover 1200 W Wendover Blvd, West Wendover, NV 89883	I-80	x		x	x	125	lighting, fuel, restroom, food, shower
12	Moapa Travel Plaza Valley of Fire Highway and I-15, Moapa, NV 89025	I-15	x				105	lighting, fuel, restroom, food, shower
5	Flying J Travel Center - Fernley 465 Pilot Road Fernley, NV 89408	I-80	x		x	x	100	lighting, fuel, restroom, food, shower
14	Gold Strike/Terrible Herbst Truck Plaza 1 Main St, Jean, NV 89019	I-15	x		x	x	100	lighting, fuel, restroom, food

ID	Site/Address	Highway	Authorized	Public	Paved	Marked	Spaces	Amenities
15	Virgin Valley Truck Stop 200 Mesa Blvd, Mesquite, NV 89027	I-15	x		x	x	100	lighting, fuel, restroom, food, shower
16	Pilot Travel Center - Fernley 465 Pilot Rd, Fernley, NV 89408	I-80	x		x	x	100	lighting, fuel, restroom, food, shower
17	Pilot and Flying J Travel Plaza - Wells 156 US-93, Wells, NV 89835	I-80	x		x	x	100	lighting, fuel, restroom, food, shower
18	TA Petro - Wells 1440 6th Street, Wells, NV, 89835	I-80	x				100	lighting, fuel, restroom, food
19	Rainbow Trucker's Lounge 1100 Wendover Blvd, West Wendover, NV 89835	I-80	x		x	x	100	lighting
20	Stagecoach Hotel & Casino 900 US-95, Beatty, NV 89003	US 95	x				100	lighting, fuel, restroom, food
30	Railroad Pass Hotel & Casino 1500 Railroad Pass Casino Rd, Henderson, NV 89002	US 93	x		x	x	100	lighting, restroom, food
21	Love's Truck Stop - Fernley 825 Commerce Center Dr, Fernley, NV 89408	I-80	x		x	x	94	lighting, fuel, restroom, food, shower
22	Pilot Travel Center - Winnemucca 5625 W Winnemucca Blvd, Winnemucca, NV 89445	I-80	x		x	x	85	lighting, fuel, restroom, food, shower
23	Pilot Travel Center - Las Vegas 3812 E Craig Rd, North Las Vegas, NV 89030	I-15	x		x	x	80	lighting, fuel, restroom, food, shower, scales
24	Love's Travel Stop - North Las Vegas 12501 Apex Great Basin Way, North Las Vegas, NV 89105	I-15	x		x	x	80	lighting, fuel, restroom, food, shower, repairs, scales
25	Love's Travel Stop - Wells 157 Hwy 93 S, Wells, NV 89835	I-80	x		x	x	80	lighting, fuel, restroom, food, shower
13	Flying J Travel Center - Winnemucca 1880 W Winnemucca Blvd, Winnemucca, NV 89445	I-80	x			x	70	lighting, fuel, restroom, food, shower
27	Flying J Travel Center - Battle Mountain 650 W Front St, Battle Mountain, NV 89820	I-80	x		x		70	lighting, fuel, restroom, food, shower, laundry
28	Golden Gate Travel Plaza 470 USA Pkwy, Sparks, NV 89434	I-80	x		x		51	lighting, fuel, restroom

ID	Site/Address	Highway	Authorized	Public	Paved	Marked	Spaces	Amenities
29	Roady's Golden Gate 163 E Main St, Lovelock, NV 89419	I-80	x		x		50	lighting
31	Silver Sage Travel Center 963 S Pioche Hwy, Ely, NV 89301	US 93	x		x		50	lighting, fuel, restroom, food, shower
32	Shell - Hawthorne 1075 US-95, Hawthorne, NV 89415	US 95	x				50	lighting
109	Love's Ely #691 1701 Great Basin Blvd, Ely, NV 89301	US 93	x				48	lighting
33	The Orleans Hotel & Casino 4500 W Tropicana Ave, Las Vegas, NV 89103	I-15	x		x	x	45	lighting
34	Maverick Truck Stop 3225 N Las Vegas Blvd N, Las Vegas, NV 89115	I-15	x		x		40	lighting
35	Buffalo Bill's Resort & Casino 31700 S Las Vegas Blvd, Primm, NV 89019	I-15	x		x	x	40	lighting
36	Pilot Travel Center - Carlin 791 10th St, Carlin, NV 89822	I-80	x		x		40	lighting, fuel, restroom, food, shower, laundry
37	Roady's Golden Gate 705 SR-362, Hawthorne, NV 89415	US 95	x				40	lighting
130	Old Tribal Truck Stop - CLOSED US-95, Schurz, NV 89427	US 95					40	
38	Cannery Casino and Hotel 2121 E Craig Rd, North Las Vegas, NV 89030	I-15	x		x	x	35	lighting
39	Fiesta Henderson Hotel & Casino 777 W Lake Mead Pkwy, Henderson, NV 89015	I-515	x		x		30	lighting
40	Wa She Shu Travel Plaza 1001 US Hwy 395 N, Gardnerville, NV 89410	US 395	x		x		30	lighting
41	Terrible Herbst Truck Stop 670 US-95, Searchlight, NV 89046	US 95	x		x		30	lighting, fuel, restroom, food, shower
42	Southern Nevada Rest Area Veterans Memorial Hwy, Cal-Nev- Ari, NV 89039	US 95	x	x	x	x	30	lighting, restroom

ID	Site/Address	Highway	Authorized	Public	Paved	Marked	Spaces	Amenities
43	Truck Stop - US 95/SR 290 3335 SR-290, Winnemucca, NV 89445	US 95	x		x		30	lighting
124	US 95 and SR 267 US-95/SR-267, Beatty, NV 89003	US 95		x	x		30	
44	Valmy Rest Area I-80 Exit 216	I-80	x	x	x	x	28	lighting, restroom
45	Rye Patch Truck Stop 1305 Rye Patch Reservoir Rd, Lovelock, NV 89419	I-80	x		x		25	lighting, fuel, restroom, food
46	Area 51 Travel Center 2711 US-95, Amargosa Valley, NV 89020	US 95	x		x		25	lighting, fuel, restroom
142	Salt Sand Pad - Lincoln Hwy US-93/Old Hwy 93 Alt, Ely, NV 89301	US 93		x	x		25	
47	Noil Truck Stop 1100 E Colton Ave, North Las Vegas, NV 89030	I-15	x		x		20	lighting
52	Cosgrave Rest Area I-80 Exit 158, Winnemucca, NV 89445	I-80	x	x	x		20	lighting, restroom
54	Pequop Rest Area I-80 Exit 373, Wells, NV 89835	I-80	x	x	x		20	restroom
55	Harmon Junction 25 S Harmon Rd, Fallon, NV 89406	US 50	x		x		20	lighting
56	R Place Food Depot 1690 Great Basin Blvd, Ely, NV 89301	US 93	x				20	lighting
57	Texaco - Tonopah 1500 Erie St, Tonopah, NV 89049	US 95	x				20	lighting, fuel, restroom, food, shower
110	Preston Truck Center SR-318 between Preston Loop and SR-895, Lund, NV 89317	SR 318	x				20	
114	Truck Swap Area North I-15 Exit 58, Las Vegas, NV 89115	I-15		x			20	
115	Truck Swap Area South I-15 Exit 58, Las Vegas, NV 89115	I-15		x			20	

ID	Site/Address	Highway	Authorized	Public	Paved	Marked	Spaces	Amenities
126	Goldfield Chain Up US-95/Lida Ave, Goldfield, NV 89013	US 95		x	x		20	
145	Amargosa Valley @ SR 373 US-95 MP 30.35, Amargosa Valley, NV 89020	US 95		x			20	
161	Wildcat Brothel Highway 95A, Mina, NV 89422	US 95					20	
58	Boulder City (Welcome Station) 100 Nevada Way, Boulder City, NV 89005	US 93	x	x	x		16	lighting, restroom, wifi
59	Sinclair Gas Station/DinoMart 1790 Idaho St, Elko, NV 89801	I-80	x		x		15	lighting, fuel, restroom, food
60	I-80 Exit 352B, Wells, NV 89835	I-80	x		x		15	lighting
111	Rest Area - Nye County SR 318 north of Butterfield Springs Lund, NV 89317	SR 318	x	x	x	x	15	
122	North Alamo Unauthorized Parking US-93 between Edythe's and North Fork Road, Alamo, NV 89001	US 93		x			15	
125	US 95 and SR 266 US-95/SR-266, Goldfield, NV 89013	US 95		x			15	
127	Chain Up and Vista Point US-6 4 miles east of the CA/NV border	US 6		x	x		15	
62	Trinity Rest Area I-80 Exit 83 Fallon, NV 89406	I-80	x	x	x	x	14	lighting, restroom
63	Button Point Rest Area I-80 Exit 187 Golconda, NV	I-80	x	x	x	x	13	lighting, restroom
64	Orovada Rest Area US-95 south of US-95/SR-293 Jct, Orovada, NV 89425	US 95	x	x	x		12	restroom
65	EB MP 96 Truck Parking I-15 MP 96, Logandale, NV 89021	I-15	x	x			10	restroom
66	SB Exit 110 Truck Parking - Mormon Mesa I-15 Exit 110, Mesquite, NV	I-15	x	x			10	

ID	Site/Address	Highway	Authorized	Public	Paved	Marked	Spaces	Amenities
67	NB Exit 110 Truck Parking - Mormon Mesa I-15 Exit 110, Mesquite, NV	I-15	x	x			10	
68	Boomtown Hotel and Casino 2100 Garson Rd, Verdi, NV 89439	I-80	x		x	x	10	lighting
69	Emigrant Pass EB Parking I-80 MP 271, Carlin, NV	I-80	x	x	x		10	
70	Emigrant Pass WB Parking I-80 MP 271, Carlin, NV	I-80	x	x	x		10	
71	Valley of the Moon SR-305, Battle Mountain, NV 89820	SR 305	x	x	x		10	restroom
72	Bean Flat Rest Area US-50 east of SR-82/US-50 Jct Eureka, NV 89316	US 50	x	x	x		10	
73	Cold Springs Station 52300 Austin Hwy, Fallon, NV 89406	US 50	x		x		10	lighting
74	Schelbourne Rest Area US-93/SR-893 Jct, Ely, NV 89301	US 93	x	x	x	x	10	restroom
75	Shell - Ash Springs 6799 US-93, Hiko, NV 89017	US 93	x		x		10	lighting
76	Barton's Club 93 1002 US-93, Jackpot, NV 89825	US 93	x		x		10	lighting
77	Golden Gate 1725 W Williams Ave, Fallon, NV 89406	US 95	x		x		10	lighting
78	Chevron - Amargosa 2626 US-95, Amargosa Valley, NV 89049	US 95	x				10	lighting
79	Red Mountain Travel Plaza 401 S Rd, McDermitt, NV 89421	US 95	x		x		10	lighting
80	Banc Club - Tonopah 360 N Main St, Tonopah, NV 89049	US 95	x		x		10	lighting
102	DPF Filter 1100 E Colton Ave, North Las Vegas, NV 89030	I-15	x		x		10	lighting

ID	Site/Address	Highway	Authorized	Public	Paved	Marked	Spaces	Amenities
112	Brake Check - SR 163 SR-163 4 miles east of US-95/SR-163 Jct	SR 163	x	x	x		10	restroom
116	Access Republic Services 13550 US-93, Las Vegas, NV 89165	I-15		x			10	
117	Love's Travel Stop - Apex Great Basin Way 12501 Apex Great Basin Way, North Las Vegas, NV 89105	I-15					10	
121	Alamo Unauthorized Parking 51 Broadway Street, Alamo, NV 89001	US 93		x			10	
134	Salt Sand Pad I-80 Exit 65, Fallon, NV 89406	I-80		x			10	
135	Chain Up - Jackpot US-93 3 miles south of Gurley Dr, Jackpot, NV 89825	US 93		x	x		10	
139	Carlin Ramp I-80 Exit 280, Carlin, NV 89822	I-80		x			10	
141	SR 535 Parking I-80 Exit 298, Elko, NV 89801	I-80		x			10	
143	Blackjack SR318 US-6/SR-318	US 6		x			10	
149	US 95 Chain Up - Paved US-95 MP 14.75, Goldfield, NV 89013	US 95		x	x		10	
154	US 6/SR 376 Jct Tonopah, NV 89049	US 6		x			10	
156	Blackrock Summit - WB US-6 MP 88, Tonopah, NV 89049	US 6		x			10	
158	US 6 - Coaldale Jct Coaldale, NV	US 6		x			10	
159	Montgomery Pass Summit US-6 MP 8.5, Dyer, NV 89010	US 6		x			10	
162	Mina on the Railroad US-95/Hilda Dr, Mina, NV 89422	US 95		x			10	

ID	Site/Address	Highway	Authorized	Public	Paved	Marked	Spaces	Amenities
165	Trinity Rest Area Overflow I-80 Exit 83, Fallon, NV 89406	I-80		x			10	restroom
167	Mary Crest Rd. Street Parking 1060 Mary Crest Rd, Henderson, NV 89074	0		x			10	
169	WB MP 96 Truck Parking I-15 MP 96, Moapa Valley, NV	I-15	x	x			10	
81	Beowave Rest Area WB I-80 Exit 258, Crescent Valley, NV 89821	I-80	x	x	x	x	9	restroom
118	Mesquite Welcome Center 460 Sandhill Blvd, Mesquite, NV 89027	I-15	x	x	x	x	9	restroom
82	Beowave Rest Area EB I-80 Exit 258, Crescent Valley, NV 89821	I-80	x	x	x	x	8	restroom
83	Leonard Creek Rest Area SR-140/Leonard Creek Rd, Winnemucca, NV 89445	SR 140	x	x	x		8	restroom
84	Saulsbury Wash US-6 24 miles east of US-95/US-6 Jct	US 6	x	x			8	restroom
85	Crystal Springs Rest Area SR-318/SR-375 Jct, Hiko, NV 89017	US 93	x	x			8	
132	Park and Ride North Virginia St/SR-427 Reno, NV 89508	US 395		x			8	
147	US 95 - Nye US-95 MP 103.85 near Stonewall Pass	US 95		x			8	
148	US 95 - Esmeralda US-95/E Railroad Springs Rd, Goldfield, NV 89013	US 95		x			8	
86	Exit 5 WB Truck Parking-Mogul I-80 Exit 5, Reno, NV 89523	I-80	x	x	x	x	7	
87	Exit 5 EB Truck Parking-Mogul I-80 Exit 5, Reno, NV 89523	I-80	x	x	x		6	
88	Luning Rest Area US-95 MP 24.34, Luning, NV 89420	US 95	x	x	x		6	restroom

ID	Site/Address	Highway	Authorized	Public	Paved	Marked	Spaces	Amenities
89	Dinky Diner 323 Crook Ave, Goldfield, NV 89013	US 95	x				6	
128	Chain Up Area - US6 @ SR 360 US-6/SR-360, Dyer, NV 89010	US 6		x			6	
129	Pull Out Area - SR 360 @ US6 SR-360/US-6, Dyer, NV 89010	SR 360		x			6	
90	Wadsworth Rest Area WB I-80 Exit 42, Reno, NV 89510	I-80	x	x	x	x	5	restroom, wifi
91	Roadside Parking Space - Golconda I-80 Exit 200, Golconda, NV 89414	I-80	x	x			5	
92	Roadside Parking Space - Golconda I-80 Exit 200, Golconda, NV 89414	I-80	x	x			5	
93	Garden Valley SR-278/J D Ranch Rd, Eureka, NV 89316	SR 278	x	x	x		5	restroom
94	Amargosa Valley Rest Area US-95 MP 30, Amargosa Valley, NV 89020	US 95	x	x			5	restroom
95	Millers Rest Area US-95 MP 46, Millers, NV	US 95	x	x	x		5	restroom
96	Four Seasons Smoke Shop 4058 US-95, Schurz, NV 89427	US 95	x				5	lighting
101	Sportsman Beach Camp Ground US-95, Hawthorne, NV 89415	US 95		x	x		5	
107	Rest Area I-80 Exit 158, Winnemucca, NV 89445	I-80	x	x			5	
120	US 93 NB US-93/Kane Springs Rd, Alamo, NV 89001	US 93		x			5	
123	Unauthorized Parking - Ash Springs US-93/Park Rd, Hiko, NV 89017	US 93		x			5	
133	Walmart Dist Queue - Clark SR-439, Sparks, NV 89434	USA Pkwly					5	

ID	Site/Address	Highway	Authorized	Public	Paved	Marked	Spaces	Amenities
136	Denio Shoulder 55150 Denio Highway 140, Denio, NV 89404	SR 292		x			5	
138	Salt Sand Pad - Dunphy I-80 Exit 254, Battle Mountain, NV 89820	I-80		x			5	
144	US 95/SR 160 Jct	US 95		x			5	
146	Beatty Unauthorized US-95 MP 60, Beatty, NV 89003	US 95		x			5	
150	Goldfield Summit US-95 MP 17.15, Goldfield, NV 89013	US 95		x	x		5	
151	US 95 MP 32.7 US-95 MP 32.7, Goldfield, NV 89013	US 95		x	x		5	
152	US 6 - Tonopah US-6 MP 27.79, Tonopah, NV 89049	US 6		x			5	
153	US 6 - Tonopah Summit US-6 MP 27.79, Tonopah, NV 89049	US 6		x	x		5	
155	US 6/SR 375 Jct - Warm Springs Warm Springs, NV	US 6		x	x		5	
157	US 50/SR 376 Austin, NV 89310	US 6		x			5	
160	SR 360/US 95 Jct Mina, NV	SR 360		x			5	
163	Crystal Springs Unauthorized SR-375/SR-318, Hiko, NV 89017	US 93		x			5	
164	Salt Sand Pad - Golconda WB I-80 Exit 200, Golconda, NV 89414	I-80		x			5	
168	US 95 Stateline CA/NV border	US 95		x			5	
170	Truck Inspection #5 I-15 NB MP 25	I-15		x			5	

ID	Site/Address	Highway	Authorized	Public	Paved	Marked	Spaces	Amenities
171	Truck Inspection #9 SR-766 NB MP 2.5	SR 766		x	x		5	
97	Eureka Rest Area US-50 MP 38, Eureka, NV 89316	US 50	x	x	x		4	
98	Pony Springs Rest Area US-93 MP 148, Pioche, NV 89043	US 93	x	x	x		4	
99	Blue Jay 6608 US-6, Tonopah, NV 89049	US 6	x	x	x		3	
100	Pahranagat Lake Rest Area US-93 MP 28, Great Basin Hwy, Alamo, NV 89001	US 93	x	x			3	
131	North Virginia North Virginia St/SR-427, Reno, NV 89508	US 395		x			3	
166	Primm Ramp I-15 Exit 1, Primm, NV 89019	I-15		x			3	
172	Truck Inspection #4 I-80 WB MP 34	I-80		x	x		3	
173	Truck Inspection #7 US-395 NB MP 40.5	US 395		x	x		3	
174	Truck Inspection #10 US-6 WB MP 37	US 6		x	x		3	
175	Truck Inspection #11 SR-277 SB MP 6	SR 277		x	x		3	
103	Maverick Adventure's First Stop 775 S Broad St, Battle Mountain, NV 89820	I-80	x		x		2	
104	Thousand Springs Rest Area SR-140 25 miles east of SR-292/SR- 140 Jct, Winnemucca, NV 89445	SR 140	x	x	x		2	restroom
105	Big Smoky SR-376, Round Mountain, NV 89045	SR 376	x	x			2	restroom
106	Salmon Falls Rest Area US-93, Jackpot, NV 89825	US 93	x	x	x		2	restroom

ID	Site/Address	Highway	Authorized	Public	Paved	Marked	Spaces	Amenities
176	Truck Inspection #8 US-395 SB MP 40.5	US 395		x	x		2	
61	Rebel Oil Truck Stop 102 Main St, Beatty, NV 89003	US 95	x		x		1	lighting, fuel, restroom, food
48	Walmart -Mesquite 1120 W Pioneer Blvd, Mesquite, NV 89027	I-15			x	x	0	lighting, restroom
49	Walmart - Las Vegas 2310 E Serene Ave, Las Vegas, NV 89123	I-215			x	x	0	lighting, restroom
50	Walmart - Henderson 540 Marks St, Henderson, NV 89014	I-515			x	x	0	lighting, restroom
51	Walmart - Reno 5260 W Seventh St, Reno, NV 89523	I-80			x	x	0	lighting, restroom
53	Walmart - Elko 2944 Mountain City Hwy, Elko, NV 89801	I-80			x	x	0	lighting, restroom
108	Wilson Canyon Rest Area SR-208 1 mile north of Butterfield Springs, Smith, NV 89430	SR 208	x	x			0	restroom
119	Flying J I-15/Lower Flat Top Drive, Mesquite, NV 89034	I-15	pending				0	
137	Proposed Loves Winnemucca - Pending I-80 Exit 176, Winnemucca, NV 89445	I-80	pending				0	
140	Golden Gate Elko - Pending I-80 Exit 298, Elko, NV 89801	I-80	pending				0	
177	Truck Inspection #1 I-80 EB MP 4	I-80		x			0	
178	Truck Inspection #2 I-80 EB MP 42	I-80		x			0	
179	Truck Inspection #3 I-80 EB MP 34	I-80		x			0	
180	Truck Inspection #6 I-15 SB MP 61	I-15		x			0	