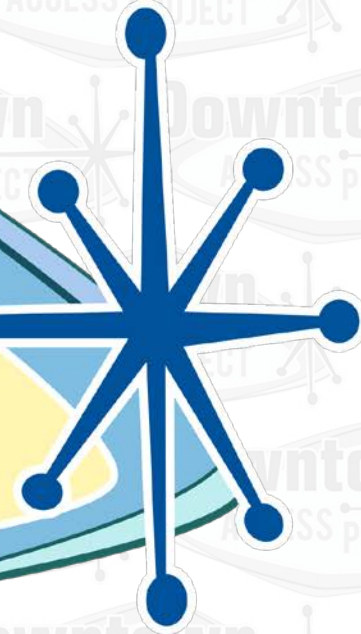


Downtown

ACCESS PROJECT





Project Location

I-515 / US 95: MLK Blvd to just east of Las Vegas Blvd



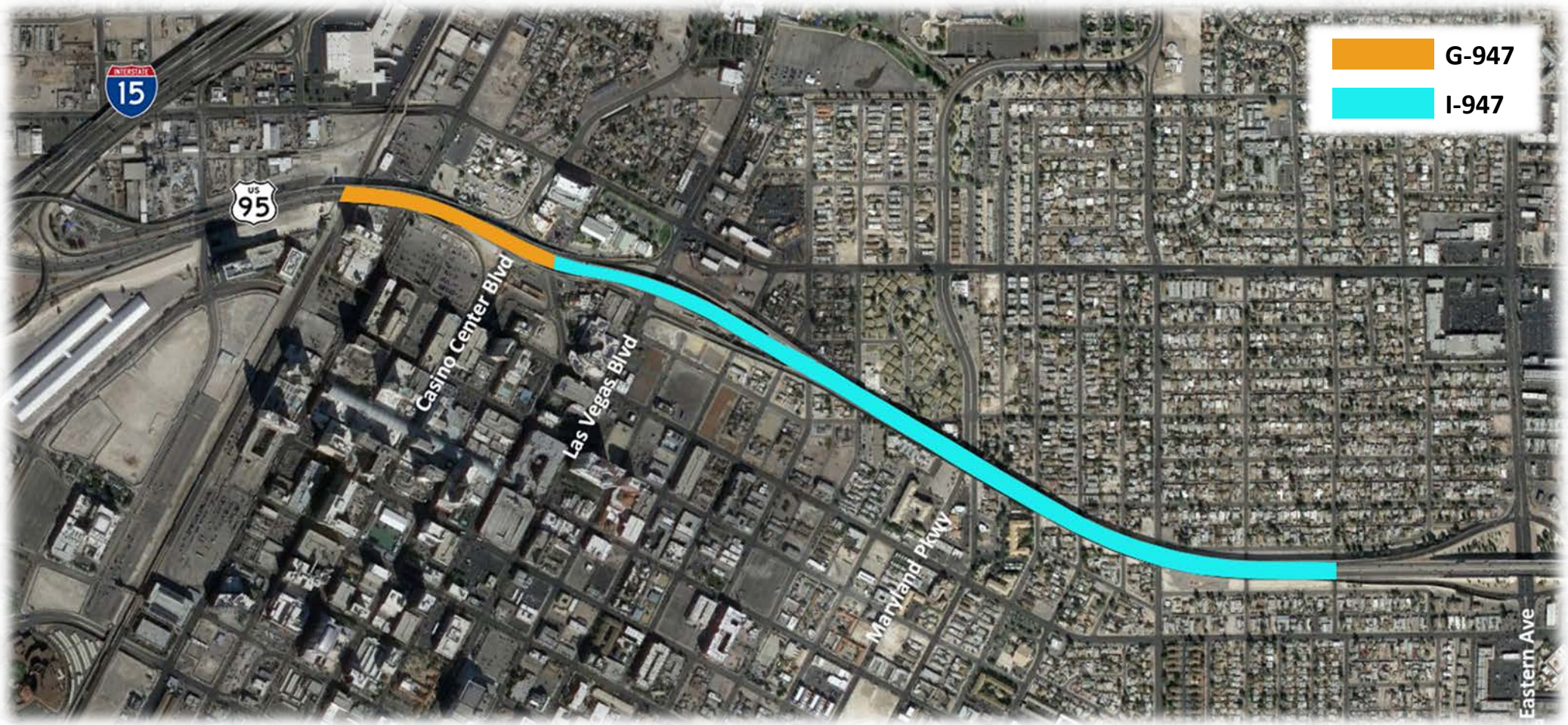


Project Need

- Replace Viaduct G-947 Structure
- Improve safety and operations along the I-515
- Add HOV Access
- Improve access and connectivity to Downtown Las Vegas



Viaduct Structures

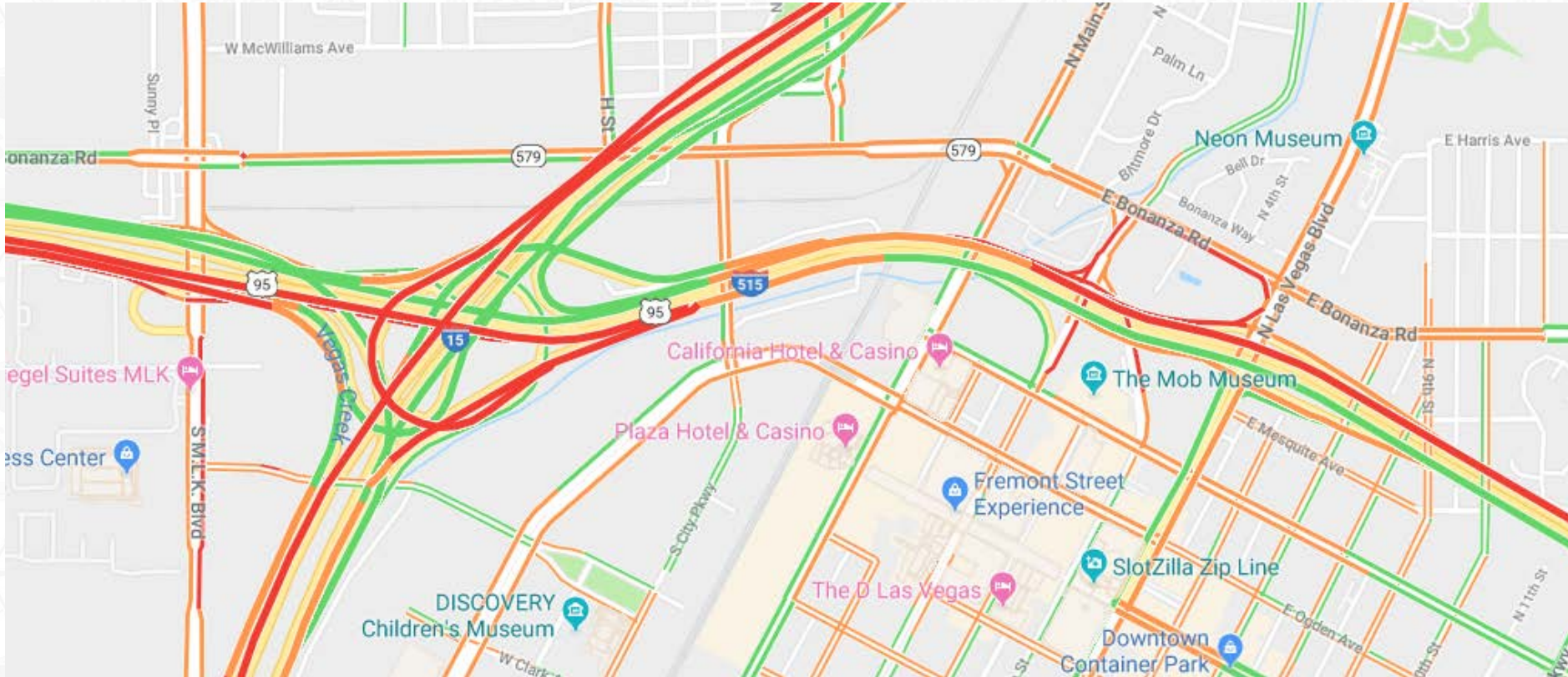


Replace G-947 Structure, UPRR to 4th Street

- Elevated structure built in 1968
- “Poor” condition
 - 40% of deck surface
 - 70% of superstructure
 - Significant deck cracking
- Repairs/rehabilitation efforts growing



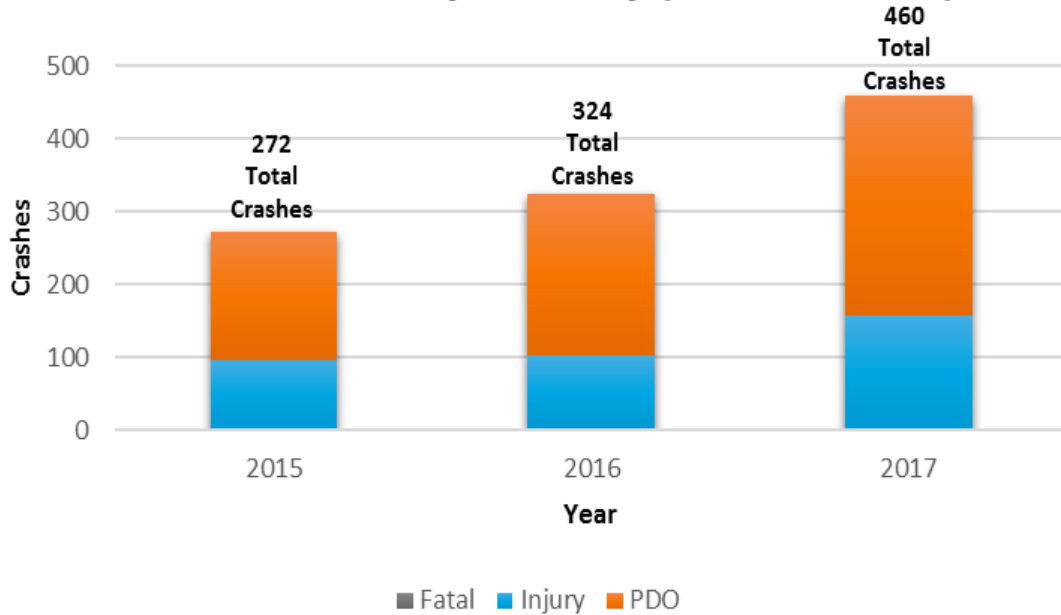
Poor Operations



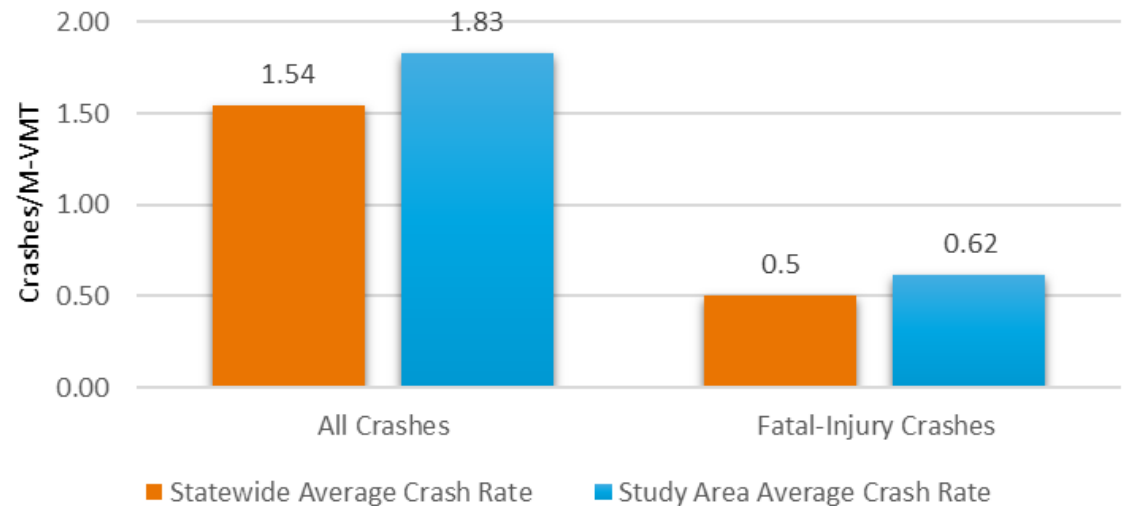


Safety

Total Crashes by Severity (2015 to 2017)



Study Area Crash Rates Compared to the Statewide Average





Project Overview

- New viaduct bridge
- New City Parkway HOV exit
- Ramp braiding
- Three through lanes on US 95





Proposed Alternative





Agreement P566-14-10

- Scope:
 - Perform Alternatives Development Study, Environmental Documentation and Concept Plan Development for the I-515 Corridor from the Wyoming Grade Separation to Martin Luther King Boulevard.
- Four Task Orders completed to date
- \$3.9M dollars
- RFP/Agreement allows the Department to amend for one of the concepts to move forward through NEPA, Design, and Project Delivery



Amendment Details: Agreement P566-14-10

- Amend Agreement \$6M (\$3.902M to \$9.902M); Task Order agreement
- Expiration date extended: Dec 2021
- 1st Task order: \$1.14M; Preliminary Design to Determine NEPA
 - \$4.86M remaining for additional tasks for NEPA or Final Design/Procurement on an as-needed basis.
 - Future Amendments required for Project Delivery and Construction Support Services.



Transportation Board Actions: Downtown Access Project

- Amend Agreement P566-14-10 (\$6M, expiration date Dec 2021)
- Moving Forward
 - Preferred alternative
 - NEPA designation – (CE or EA)
 - Refined project schedule
 - Construction and ROW funding options
 - Project delivery options

Questions?



Ryan Wheeler, PE
NDOT Senior Project Manager
(702) 278-3391
rwheeler@dot.nv.gov





Schedule & Cost Savings through the NEPA process

Environmental Process (Based on Impact)

- Categorical Exclusion
 - 3-6 months
- Environmental Assessment
 - 12-18 months
- Environmental Impact Statement
 - 3+ years



Next Steps

1	Stakeholder Meetings
	Alternatives Development
2	Preliminary Design
	Environmental Clearance
3	Determine Construction Funding
	Determine Project Delivery Method

I-15 Traffic Enters US 95 SB Near LV Blvd





US 95 SB HOV Exit to City Parkway



- I-15 Traffic
- US 95 Traffic
- Combined Traffic



I-15 & US 95 SB Exits to Casino Center Blvd



- I-15 Traffic
- US 95 Traffic
- Combined Traffic



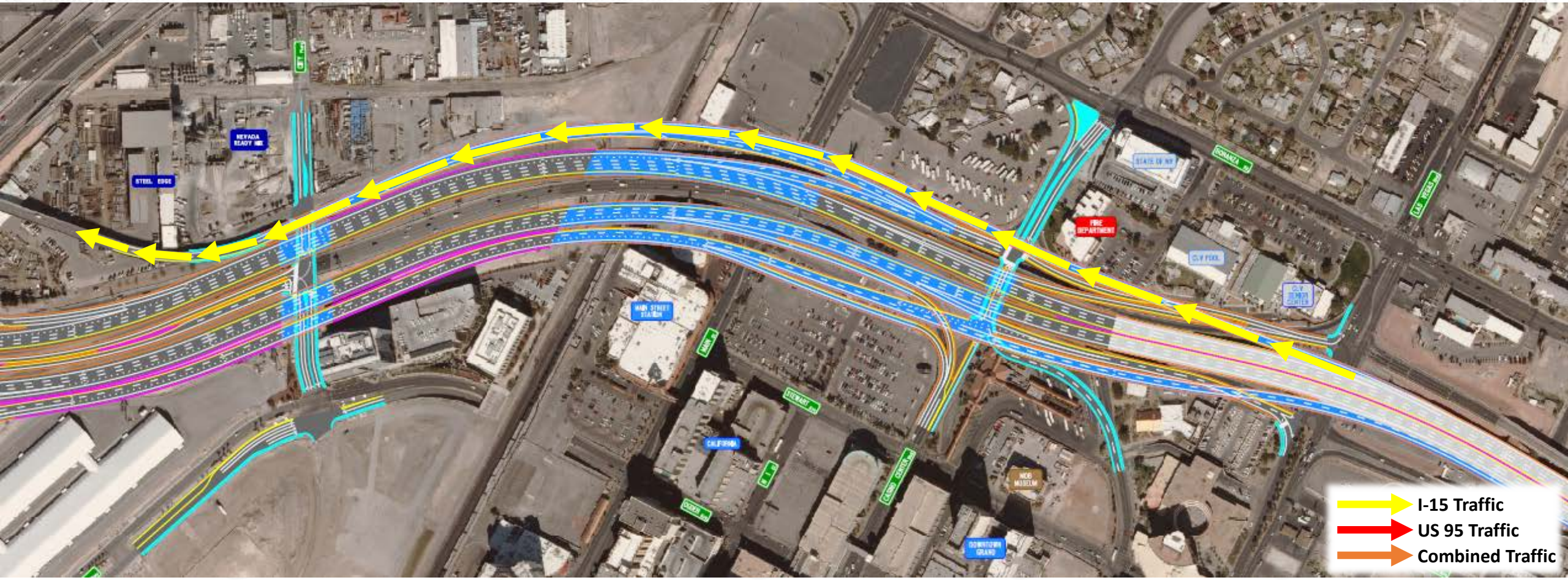
I-15 & US 95 SB Exits to Las Vegas Blvd



- I-15 Traffic
- US 95 Traffic
- Combined Traffic



US 95 NB to I-15 SB Traffic Exits Near LV Blvd





Las Vegas Blvd on-ramps to I-15 SB & US 95 NB/I-15 NB



- I-15 Traffic
- US 95 Traffic
- Combined Traffic



4th Street on-ramps to I-15 SB & US 95 NB/I-15 NB



- I-15 Traffic
- US 95 Traffic
- Combined Traffic