

FED. ROAD DIST. NO.	STATE	PROJECT NO.	COUNTY	SECTION	DATE	HEET NO.	TOTAL SHEETS
7	NEVADA	1-1029-117	WASHOE	SI-061	8/24		

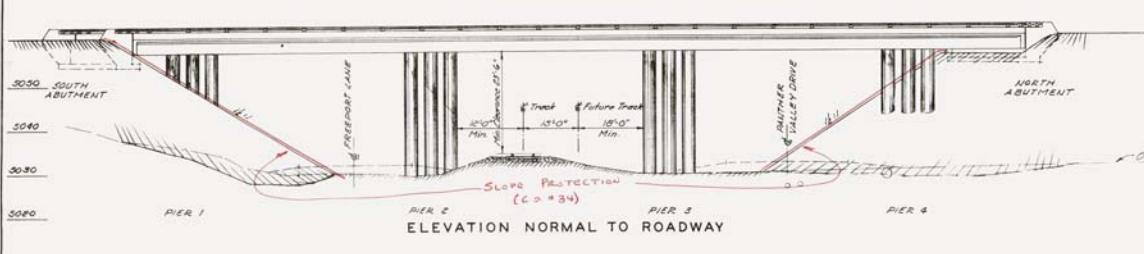
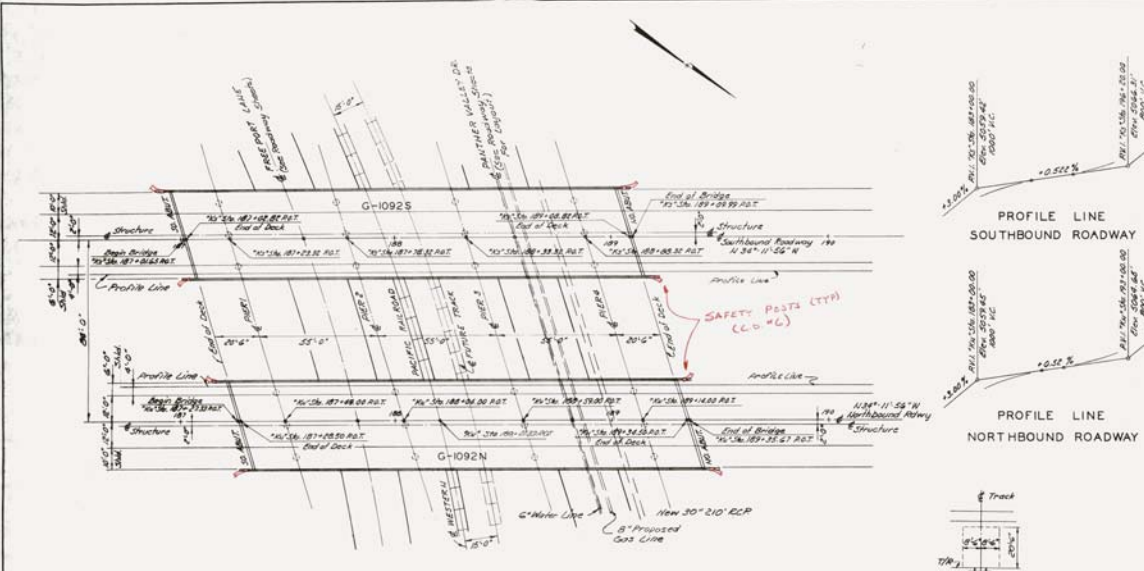
**SUMMARY OF QUANTITIES**

CONCRETE CU YDS.	REINFORCING STEEL LBS.
1032-N 1032-S	1032-N 1032-S
PIER FOOTINGS	47.2 47.2 10,946.8 10,946.8
PIER COLUMNS	346.3 346.3 24,775.5 24,775.5
ABUTMENTS	37.3 37.3 2,188.5 2,188.5
DECK SLAB, CHAS.	
GIRDER BENTHS	433.7 433.7 103,934.1 103,934.1
PARAPETS	24.8 24.8 1,107.8 1,107.8
PEDESTALS	35.6 35.6 2,677.9 2,677.9
<b>672.9 672.9 206,562.6 206,562.6</b>	

1031-N	1031-S
STRUCTURE EXCAVATION	450.0 CU YDS. 450.0 CU YDS.
BRACKLE	519.0 CU YDS. 519.0 CU YDS.
BRIDGE RAIL-TYPE N	427.0 L.F.F.F. 427.0 L.F.F.F.

**GENERAL NOTES**

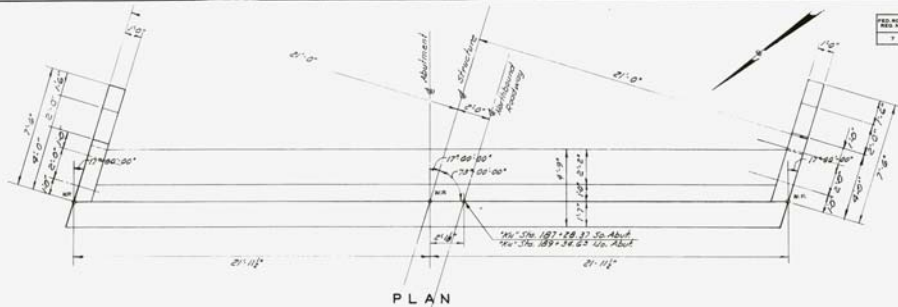
- DESIGN SPECIFICATIONS: AASHTO Standard Specifications for Highway Bridges, 1941, and "Interstate Specifications through 1965."
- CONSTRUCTION SPECIFICATIONS: "Basis of Nevada Department of Highways Standard Specifications for Road and Bridge Construction 1961," except as noted below, and in the special provisions for this contract.
- NOTE: Standard of 20-00 or otherwise loading.
- CONCRETE: All concrete in the substructure shall be Class 44. All concrete in the superstructure shall be Class 50.
- REINFORCING STEEL: All reinforcing steel to be intermediate or best grade. Dimensions are in inches if not otherwise indicated. Bar sizes (1) to (11) are indicated by the first number in the Mark, size (12) or larger by the first two numbers. Spiral reinforcement shall conform to ASTM designation A313 or ASTM A-82.
- COARSE: The number shall be as shown on the plans.
- PAVING & FURROWS: Pavement supporting the main carrying members of all continuous spans shall not be removed from any main wall until spans are raised.
- STEEL BRIDGES: Minimum bearing value for plate bearing  $\frac{1}{2}$  inch dia. per sq. ft.
- STEEL BRIDGES: Bridge railing to be bridge railing type A.
- BRIDGE NO.: 1029-117.



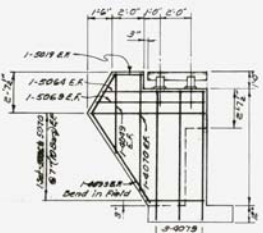
STATE OF NEVADA  
DEPARTMENT OF HIGHWAYS  
G-1092N & G-1092S  
PANTHER VALLEY  
OVERPASS  
GENERAL PLAN

BRIDGE DEPARTMENT	DATE	REVISION

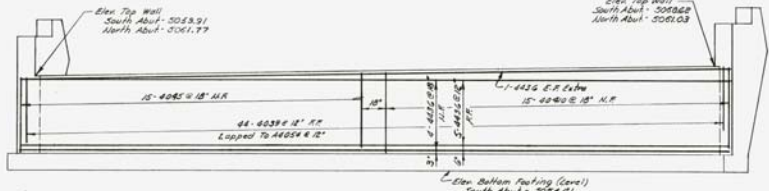
FEDERAL ROAD DISTRICT	STATE	PROJECT NO.	COUNTY	SECTION	DATE	SHEET NO.	TOTAL SHEETS
9	NEVADA	7-359 (17)	WASHINGTON	31-061		823	



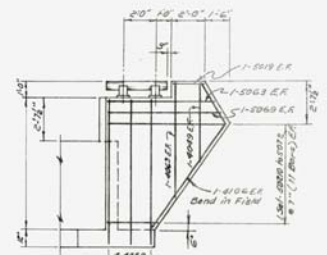
PLAN



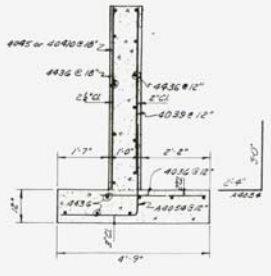
LOW WINGWALL



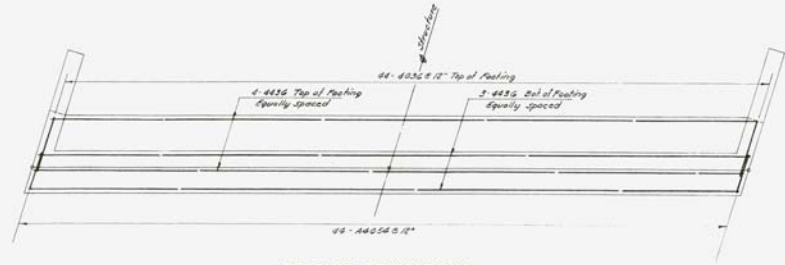
ELEVATION - SOUTH ABUTMENT  
(North Abutment Opposite Hand)



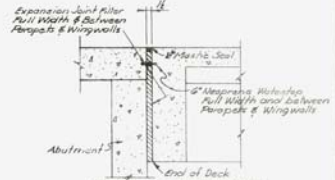
HIGH WINGWALL



TYPICAL SECTION



FOOTING REINFORCING



DETAIL AT ABUTMENTS

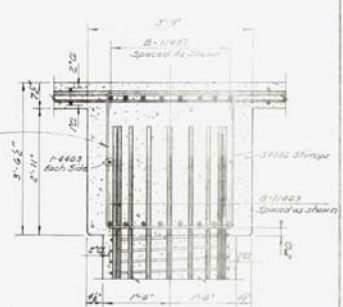
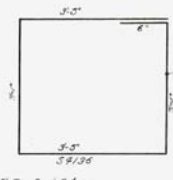
STATE OF NEVADA  
DEPARTMENT OF HIGHWAYS  
**G-1092N**  
ABUTMENT DETAILS  
AND  
REINFORCING

BRIDGE DEPARTMENT	BY	DATE	DESIGNED BY	DATE

FEDERAL ROAD DISTRICT	STATE	PROJECT NO.	SHEET NO.	TOTAL SHEETS
1	NEVADA	F-009 (17)	184346	11-163

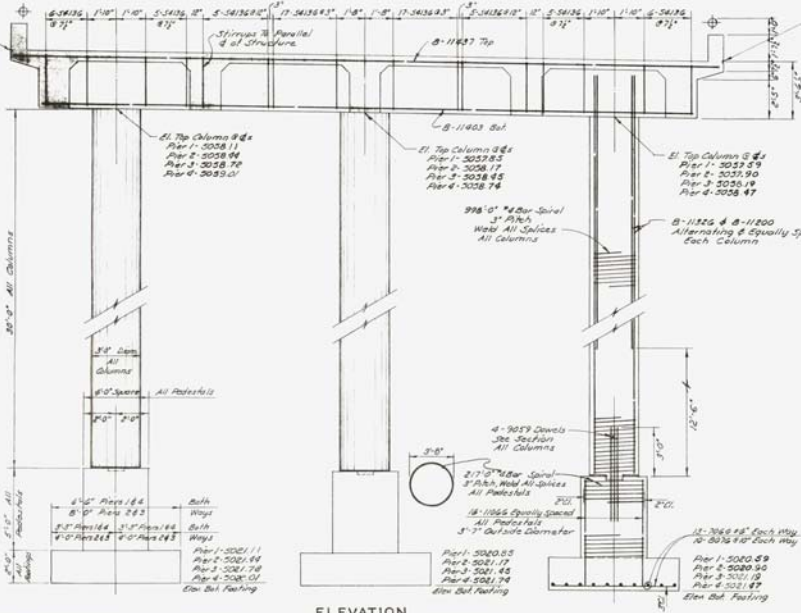


PLAN

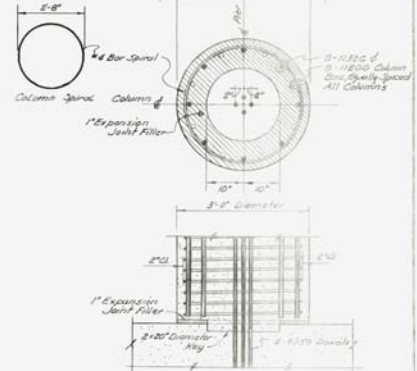


El. Top Deck 0.0  
 Pier 1-3061.70  
 Pier 2-3061.11  
 Pier 3-3062.39  
 Pier 4-3062.40

El. Top Deck 0.0  
 Pier 1-3061.00  
 Pier 2-3061.30  
 Pier 3-3061.60  
 Pier 4-3061.90



ELEVATION



CAP AND COLUMN DETAILS

STATE OF NEVADA  
 DEPARTMENT OF HIGHWAYS  
 G-1092N  
 PIER DETAILS  
 AND  
 REINFORCING

BRIDGE DEPARTMENT	DATE	ISSUED BY	SCALE

REINFORCEMENT	BAR	SIZE	SPACING	NOTES
17-#10	17-#10	17'-00"		Top Deck
17-#10	17-#10	17'-00"		Bottom Deck
17-#10	17-#10	17'-00"		Column

4-#5 Spiral  
 3" Pitch  
 All Columns

27-#4 Bar Spiral  
 3" Pitch, Weld All Splices  
 All Reinforcing

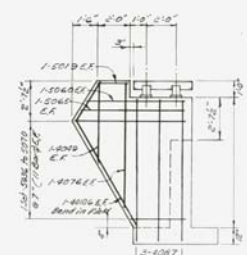
17-#10 Bars Spaced  
 17'-00" Outside Column Face

17-#10 Bars Spaced  
 17'-00" Each Way, Pier 1 & 2  
 17-#10 Bars Spaced  
 17'-00" Each Way, Pier 3 & 4

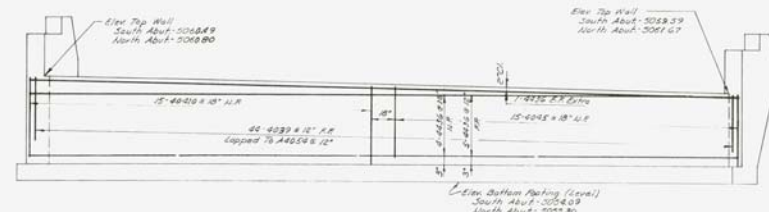
FILE NO.	DATE	PROJECT	COUNTY	SECTION	SCALE	SHEET	TOTAL SHEETS
7	REVISION	1-1-77	WAGNER	51-063		227	



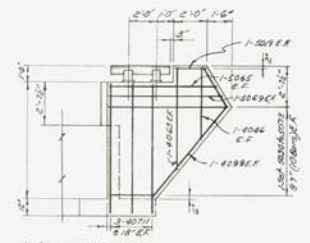
PLAN



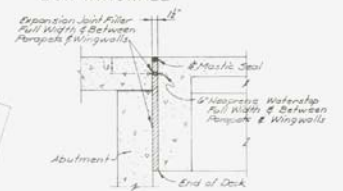
HIGH WINGWALL



ELEVATION - SOUTH ABUTMENT  
(North Abutment Opposite Hand)

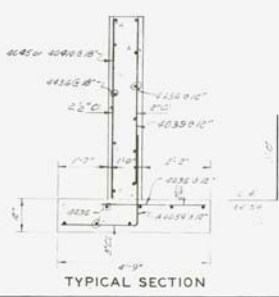


LOW WINGWALL

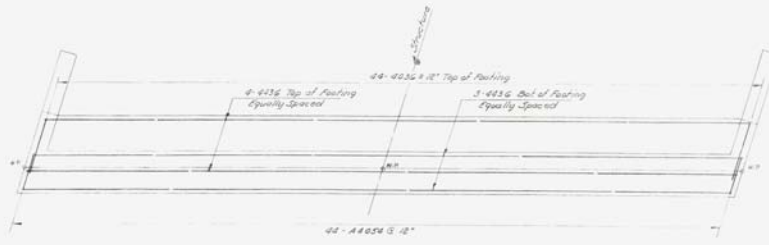


DETAIL AT ABUTMENTS

STATE OF NEVADA  
DEPARTMENT OF HIGHWAYS  
G-1092S  
ABUTMENT DETAILS  
AND  
REINFORCING



TYPICAL SECTION

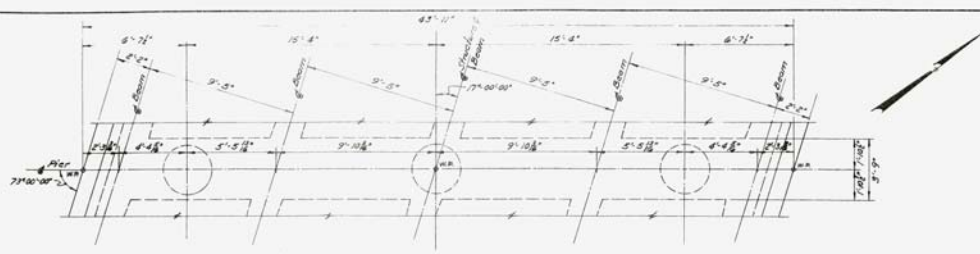


FOOTING REINFORCING

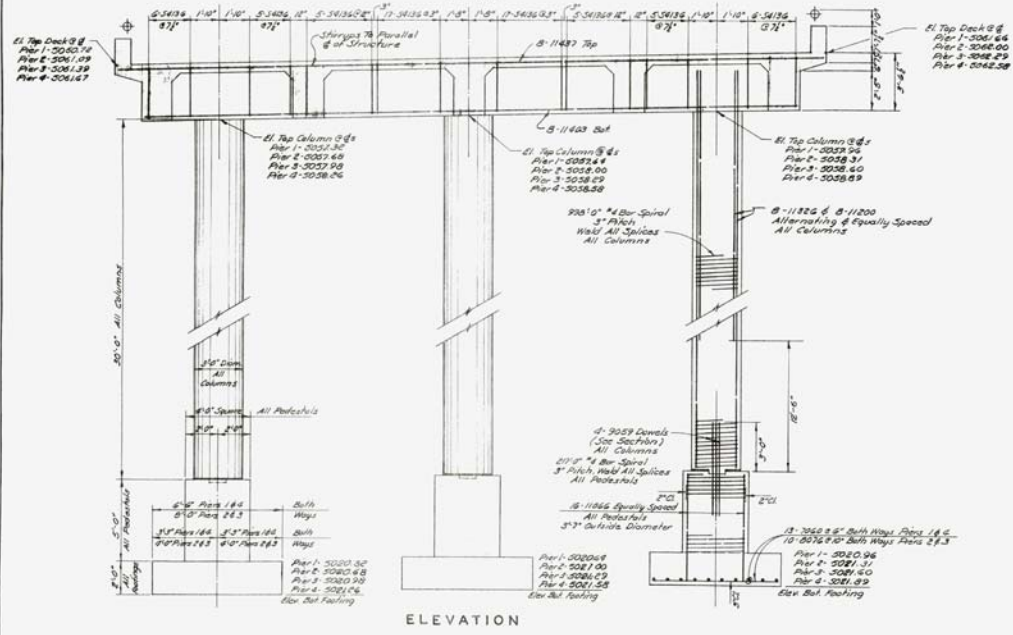
BRIDGE DEPARTMENT	DATE	DESIGNED BY	CHECKED BY



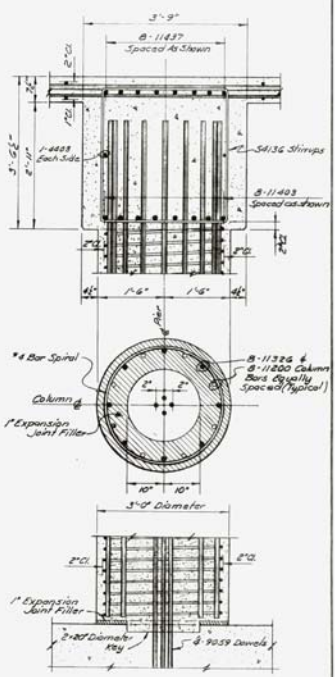
FED. HIGHWAY DIST. NO.	STATE	PROJECT NO.	COUNTY	CONTRACT NO.	STATE ROUTE	SHEET NO.	TOTAL SHEETS
7	NEVADA	1-209-1191	WASHOE	37-061		828	



PLAN



ELEVATION

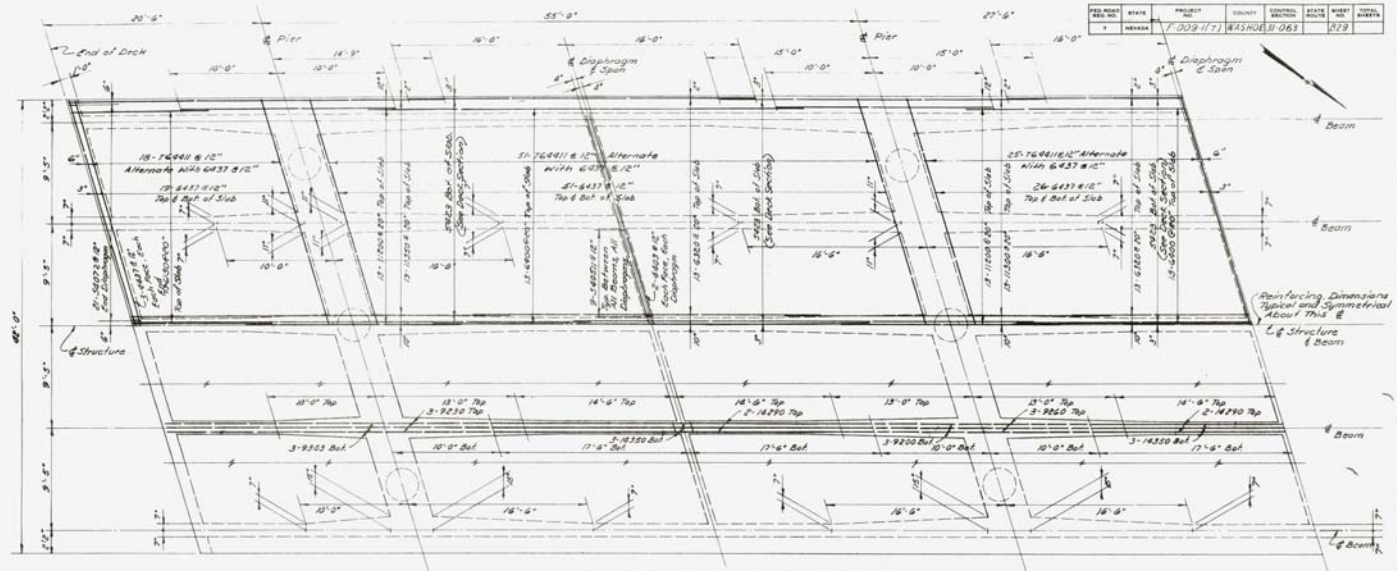


CAP AND COLUMN DETAILS

STATE OF NEVADA  
DEPARTMENT OF HIGHWAYS  
**G-1092 S**  
PIER DETAILS  
AND  
REINFORCING

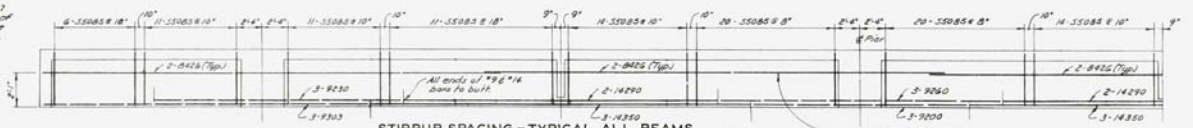
BRIDGE DEPARTMENT	BY DATE	CHECKED BY DATE

FEDERAL ROAD DISTRICT	STATE	PROJECT NO.	COUNTY	SECTION	DATE	SCALE
NEVADA	NEVADA	7-309-177	WASHINGTON	063	379	

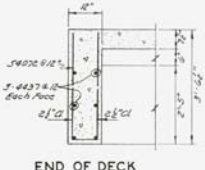


HALF DECK PLAN AND REINFORCING

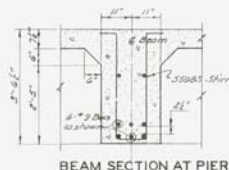
NOTE  
 The Contractor May Use G431 Top of Beams & 1/2" Dia of Trans Bars Provided There Is No Additional Cost To The Highway Department.



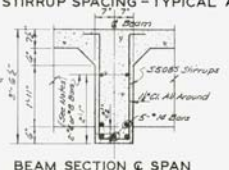
STIRRUP SPACING - TYPICAL ALL BEAMS



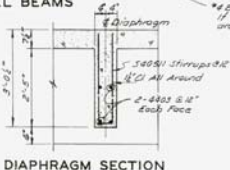
END OF DECK



BEAM SECTION AT PIER



BEAM SECTION @ SPAN

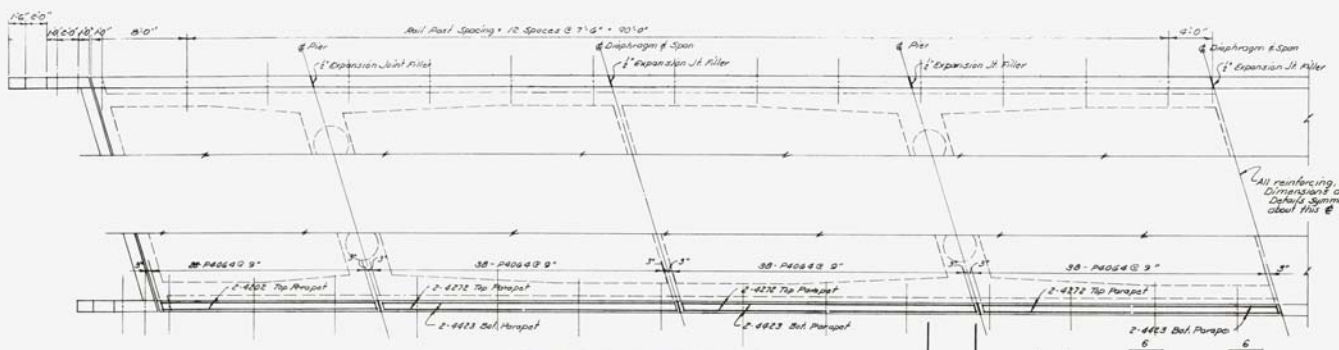


DIAPHRAGM SECTION

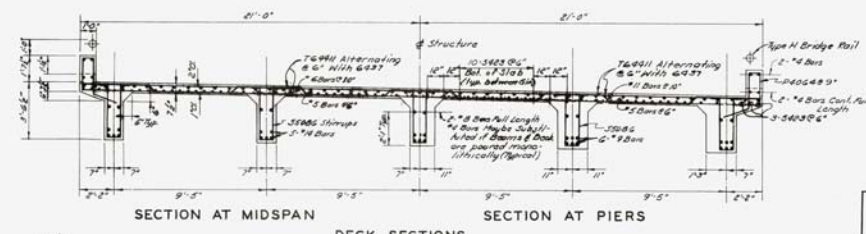
\* Bars May Be Substituted If The Deck and Beams are Formed Monolithically

STATE OF NEVADA  
 DEPARTMENT OF HIGHWAYS  
 G-1092N & G-1092S  
 DECK DETAILS  
 AND  
 REINFORCING

FED. ROAD DIST. NO.	STATE	PROJECT NO.	COUNTY	CENTRAL SECTION	STATE ROUTE	SHEET NO.	TOTAL SHEETS
7	NEVADA	032-117	WASHOE	31-063		530	

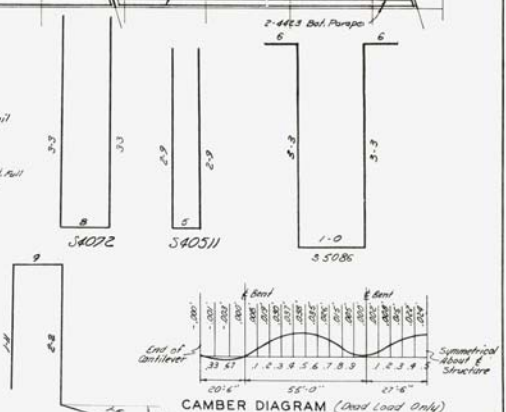


PARAPET PLAN AND REINFORCING

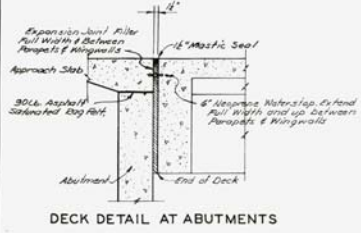


SECTION AT MIDSPAN SECTION AT PIERS

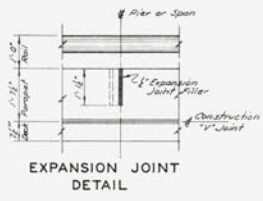
DECK SECTIONS



CAMBER DIAGRAM (Dead Load Only)



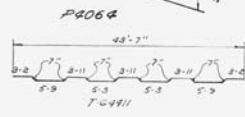
DECK DETAIL AT ABUTMENTS



EXPANSION JOINT DETAIL



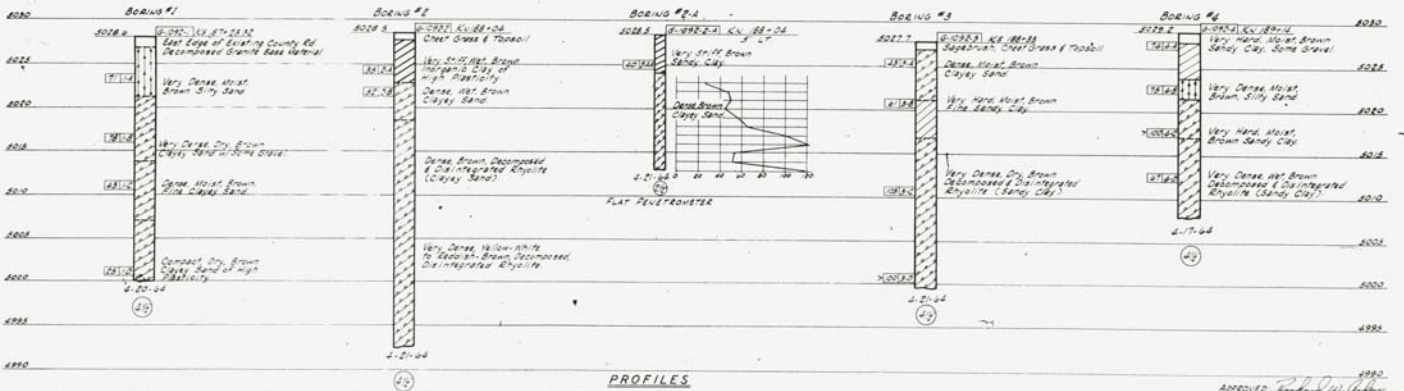
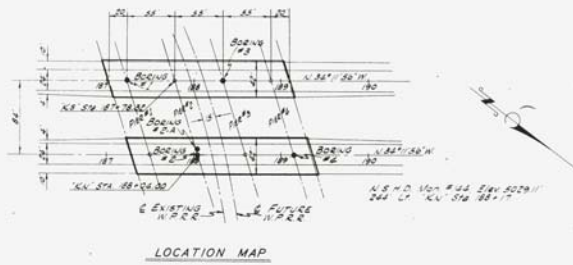
CONSTRUCTION 'V' JOINT



STATE OF NEVADA  
DEPARTMENT OF HIGHWAYS  
G-1092N & G-1092S  
DECK DETAILS  
AND  
REINFORCING

BRIDGE DEPARTMENT	DATE	DESIGNED BY

FED. ROAD DIST. NO.	STATE	PROJECT NO.	COUNTY	CONTRACT NO.	STATE ROAD NO.	MARKET NO.	SHEET NO.
1	NEVADA	F-009-1(7)	WASHOE	31-003			231



DATE	BY

<b>LEGEND OF SOILS</b> 		<b>LEGEND OF BORING OPERATION</b> 		APPROVED: <i>[Signature]</i> STATE OF NEVADA DEPARTMENT OF HIGHWAYS <b>PANTHER VALLEY OVERPASS</b> G-1092N & G-1092S <b>LOG OF TEST BORINGS</b> SPROUT ENGINEERS, INC. 1111 T. 19th St. 733 B STREET LAS VEGAS, NEVADA 89102 1964
TOP OF HOLE ELEV. LOCATION DATE OF BORING SIZE TYPE		TOP OF HOLE ELEV. LOCATION DATE OF BORING SIZE TYPE		