

Landscape & Aesthetics Corridor Plan Endorsement



1-15 landscape and aesthetics corridor plan

CORRIDOR PLAN



1-15 FROM
PRIMM TO MESQUITE

DESIGN WORKSHOP

Mackay & Somp
JW Zunino & Assoc.
CH2MHill
Jones & Jones

Spring 2005

Purpose of Briefing

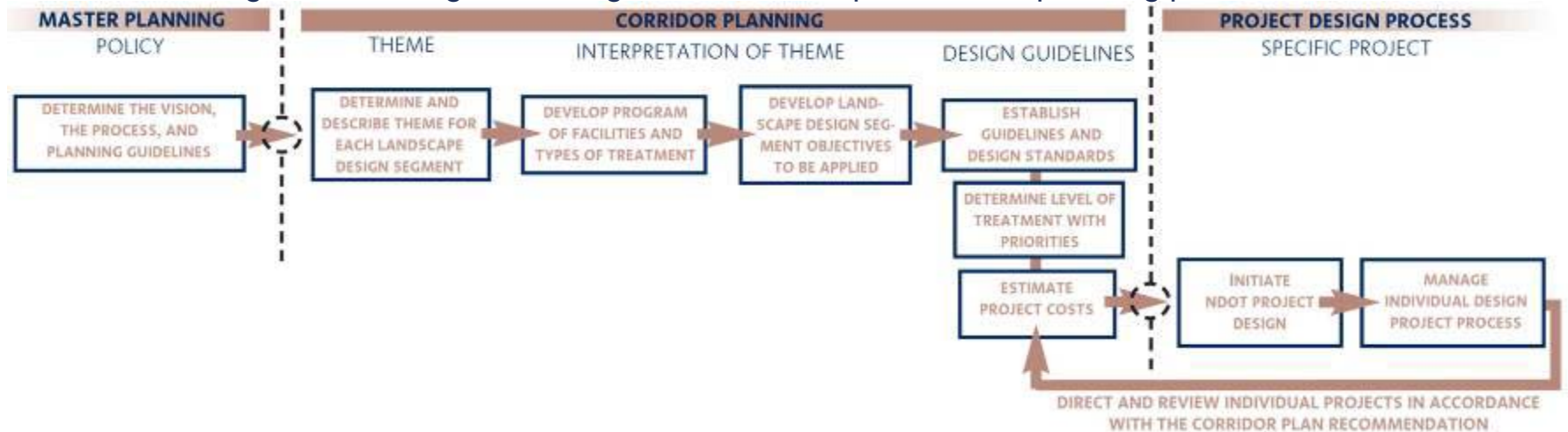
- Present a summary of the themes, opportunities, and priorities of the *Corridor Plan* to agencies and organizations
- Obtain endorsement of the *Corridor Plan* from your respective agency or organization



Purpose of Corridor Plan

Landscape and Aesthetics Corridor Plan

- Provides a design management tool for NDOT and creates a new method for NDOT to approach projects
- Sets the context for future projects and provides design themes and levels of treatment for each corridor
- Establishes specific, prioritized opportunities for improvements
- Provides guidelines for materials and plant palettes, highway structures, construction practices, and maintenance practices
- Provides planning level cost goals
- Involves government agencies, organizations, and public in the planning process

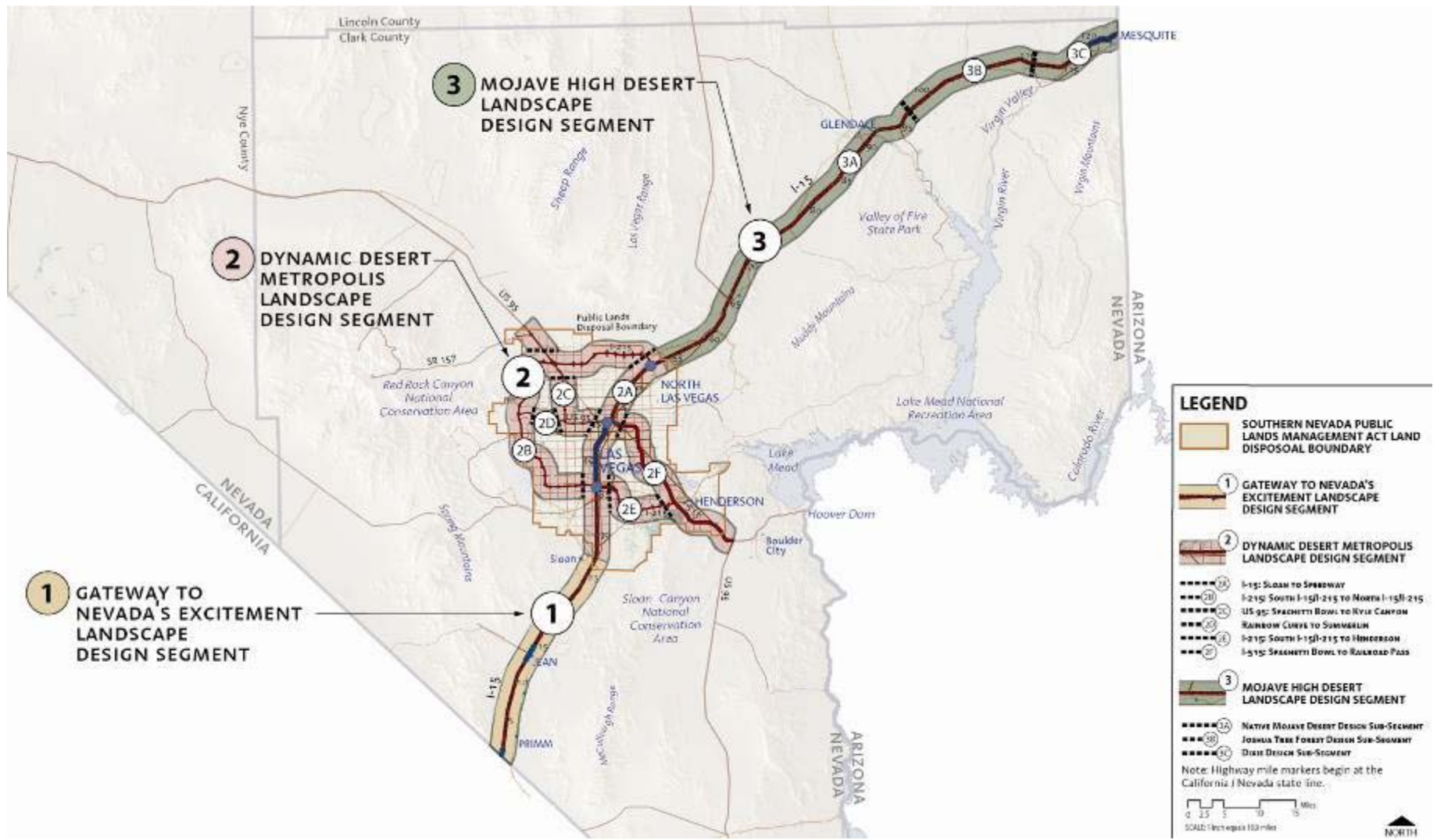


Public Participation Process

- The public participation process included a series of six (6) Technical Review Committee (TRC) meetings and two (2) Public Workshops for each corridor.
- Release of full information about the *Corridor Plan* through public meetings, the *Corridor Plan* website, and fact sheets.
- Future opportunities for the public to express opinion is provided at each of the project design level.



Landscape Design Context



landscape and aesthetics corridor planning

I-15 FROM PRIMM TO MESQUITE

DESIGN WORKSHOP
Jones & Jones
MacKay & Somp
IW Zunino & Assoc.
CH2MHill



Levels of Landscape Treatment

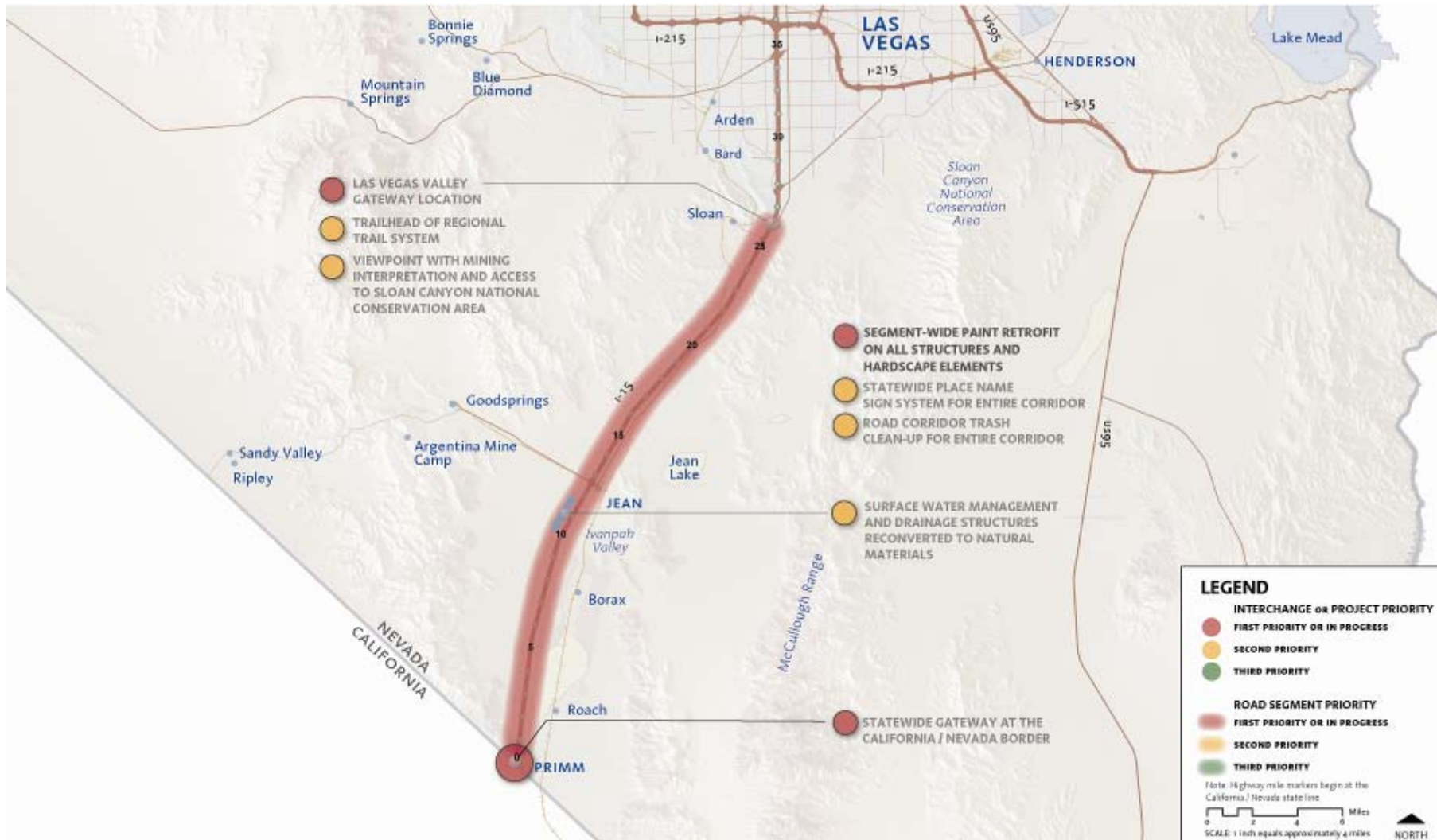
Softscape Types and Hardscape Types

- Defined by a hierarchy of treatment levels
- Used separately or in combination to establish design character within the corridor

			STANDARD	ACCENTUATED	FOCAL	LANDMARK	
SOFTSCAPE TYPES AND TREATMENTS	GROUND TREATMENT						
	NATIVE PLANT REVEGETATION						
	ENHANCED NATIVE LANDSCAPE						
	REGIONALLY ADAPTED LANDSCAPE						
	REGIONAL ORNAMENTAL LANDSCAPE						

Opportunities and Priorities

Gateway to Nevada's Excitement



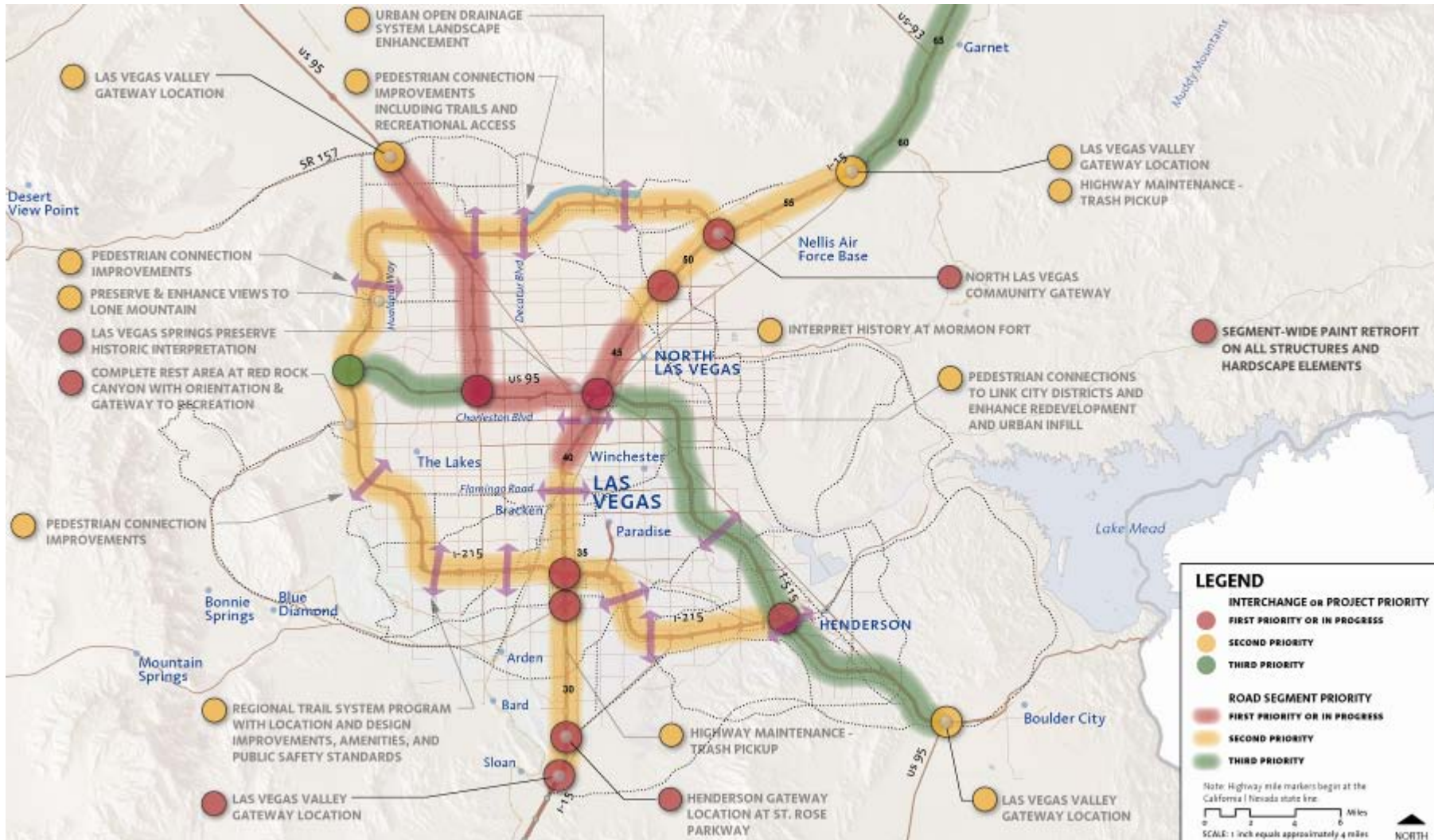
landscape and aesthetics corridor planning

DESIGN WORKSHOP
Jones & Jones
MacKay & Somp
IW Zunino & Assoc.
CH2MHILL



Opportunities and Priorities

Dynamic Desert Metropolis



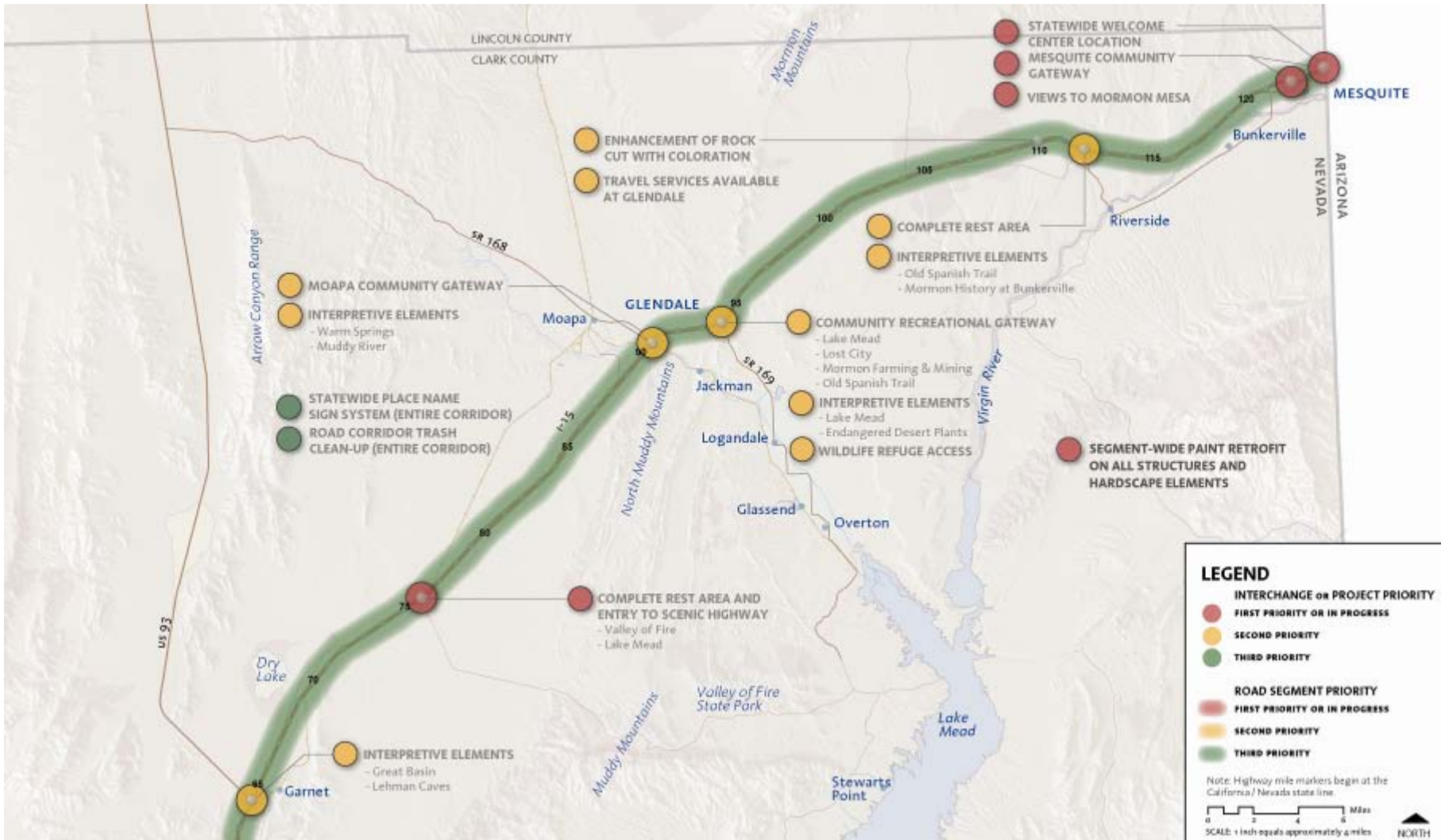
landscape and aesthetics corridor planning

DESIGN WORKSHOP
 Jones & Jones
 MacKay & Somp
 IW Zunino & Assoc.
 CH2MHill



Opportunities and Priorities

Mohave High Desert



landscape and aesthetics corridor planning

DESIGN WORKSHOP
Jones & Jones
MacKay & Sojms
IW Zunino & Assoc.
CH2MHill



Design Guidelines

- Provide a framework for improving landscape and aesthetics.
- Establish qualitative levels of design to meet the objectives of each Landscape Design Segment.
- Address topics including:
 - Project Design Process
 - Welcome Centers & Statewide Gateways
 - Community Gateways
 - Rest Areas, Viewpoints, and Pull-offs
 - Signage
 - Transportation Art
 - Color
 - Non-motorized Transportation Systems
 - Bridges
 - Retaining Walls
 - Sound Walls & Visual Screen Walls
 - Lighting
 - Grading
 - Revegetation Methods and Plant Material
 - Sustainable Highway Environments

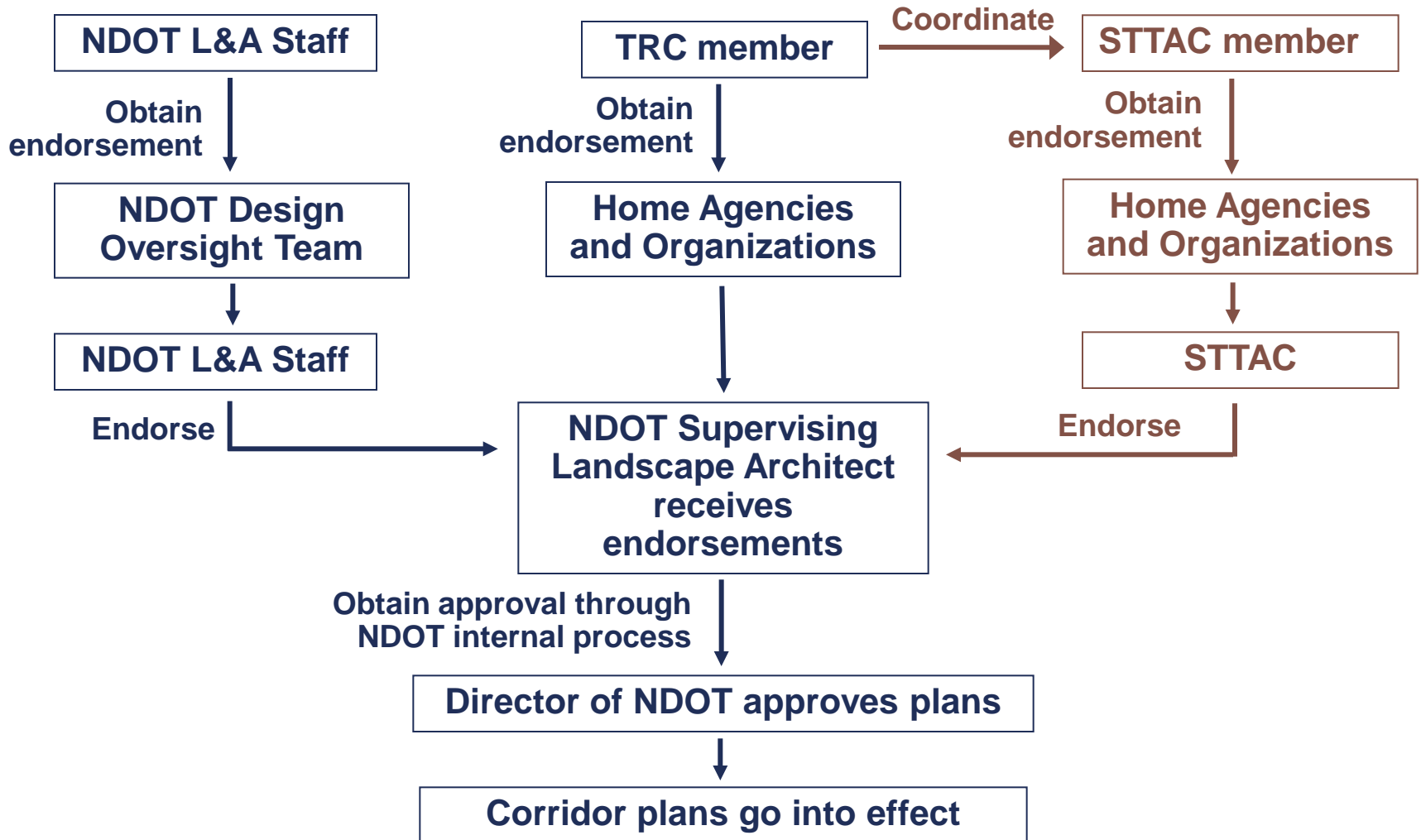


Endorsement

- Agree in principle with the landscape and aesthetic opportunities identified within your jurisdiction; including the design objectives and guidelines for the corridor; and the priority levels assigned to landscape and aesthetic projects.
- Agree in principle to work in partnership with NDOT to develop a highway system that reflects the land and people of Nevada.
- Support the vision expressed in the *Landscape and Aesthetics Master Plan* of highways that are aesthetically pleasing, as well as safe and cost effective.
- Endorse the Corridor Plan as a management tool for integrating landscape and aesthetics into all aspects of the planning, design, construction, operations, and maintenance of State-managed highways in Nevada.
- Provide NDOT with signed letter verifying that your agency or organization voted to endorse the *Landscape and Aesthetics Corridor Plan* prepared by the Nevada Department of Transportation for the I-15 corridor.



Endorsement Process



Schedule

No later than

April 7

STTAC members complete briefings to officials and agencies.

April 29

Officials, agencies, and NDOT staff endorse corridor plans

June 13

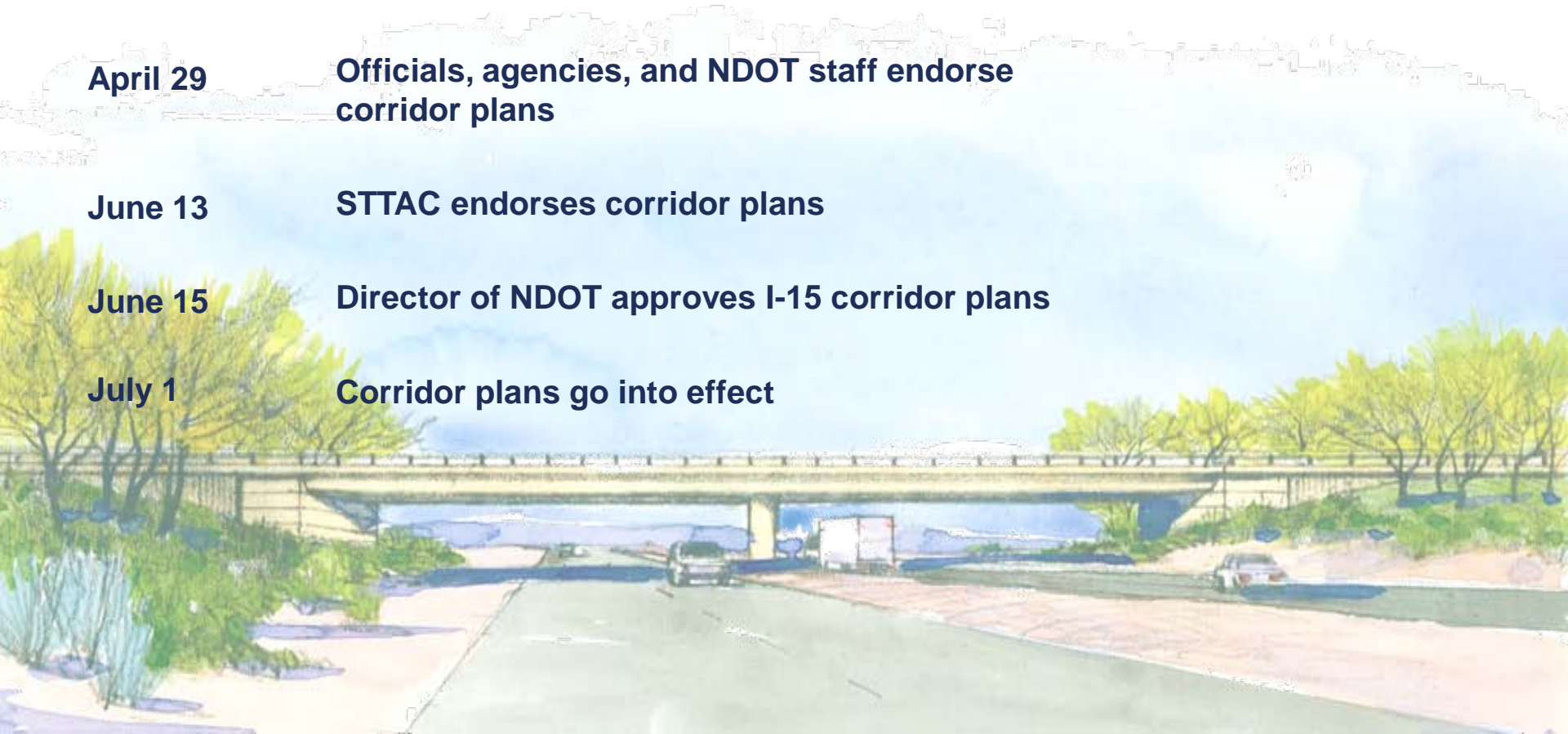
STTAC endorses corridor plans

June 15

Director of NDOT approves I-15 corridor plans

July 1

Corridor plans go into effect



landscape and aesthetics corridor planning

DESIGN WORKSHOP
Jones & Jones
MacKay & Somps
IW Zunino & Assoc.
CH2MHill



UNIV