

Landscape & Aesthetics Corridor Plan Endorsement



1-80 landscape and aesthetics corridor plan

CORRIDOR PLAN



**NEVADA
DOT**

UNIV.

1.80 FROM
VERDI TO WEST
WINDOVER
& US 89 FROM
WINNEMUCCA TO
MCDERMITT

DESIGN WORKSHOP

Jones & Jones
Mackay & Soms
JW Zunino & Assoc.
CH2MHill

Spring 2005

Purpose of Briefing

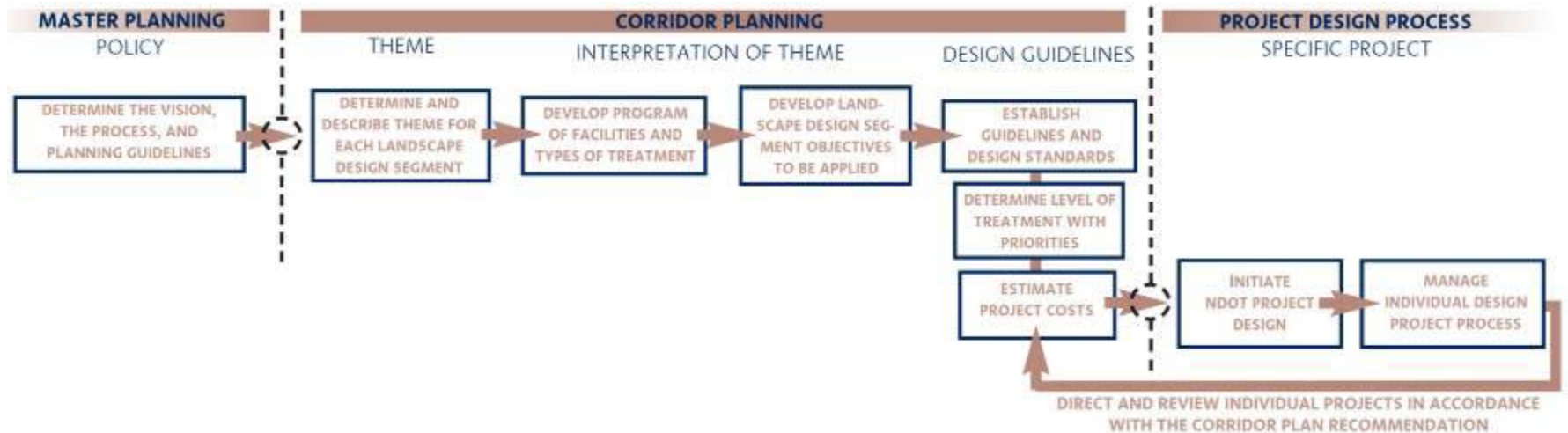
- Present a summary of the themes, opportunities, and priorities of the *Corridor Plan* to agencies and organizations
- Obtain endorsement of the *Corridor Plan* from your respective agency or organization



Purpose of Corridor Plan

Landscape and Aesthetics Corridor Plan

- Provides a design management tool for NDOT and creates a new method for NDOT to approach projects
- Sets the context for future projects and provides design themes and levels of treatment for each corridor
- Establishes specific, prioritized opportunities for improvements
- Provides guidelines for materials and plant palettes, highway structures, construction practices, and maintenance practices
- Provides planning level cost goals
- Involves government agencies, organizations, and public in the planning process

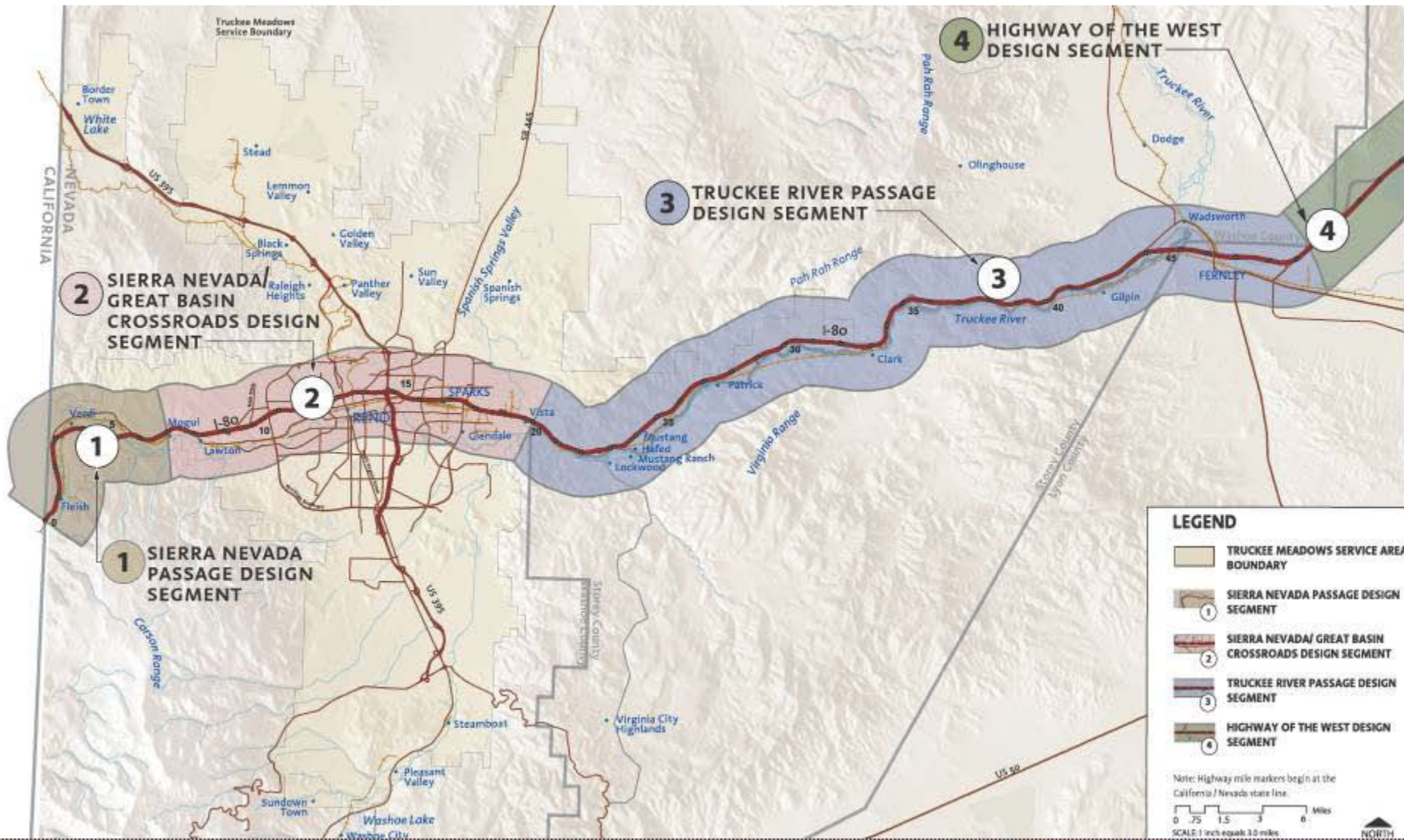


Public Participation Process

- The public participation process included a series of six (6) Technical Review Committee (TRC) meetings and two (2) Public Workshops for each corridor.
- Release of full information about the *Corridor Plan* through public meetings, the *Corridor Plan* website, and fact sheets.
- Future opportunities for the public to express opinion is provided at each of the project design level.



Landscape Design Context



landscape and aesthetics corridor planning

DESIGN WORKSHOP
 Jones & Jones
 MacKay & Somps
 IW Zunino & Assoc.
 CH2MHILL



Levels of Landscape Treatment

Softscape Types and Hardscape Types

- Defined by a hierarchy of treatment levels
- Used separately or in combination to establish design character within the corridor

| | | | STANDARD | ACCENTUATED | FOCAL | LANDMARK |
|--------------------------------|-------------------------------|--|----------|-------------|-------|----------|
| | | | | | | |
| | | | | | | |
| SOFTSCAPE TYPES AND TREATMENTS | GROUND TREATMENT | | | | | |
| | NATIVE PLANT REVEGETATION | | | | | |
| | ENHANCED NATIVE LANDSCAPE | | | | | |
| | REGIONALLY ADAPTED LANDSCAPE | | | | | |
| | REGIONAL ORNAMENTAL LANDSCAPE | | | | | |

Opportunities and Priorities

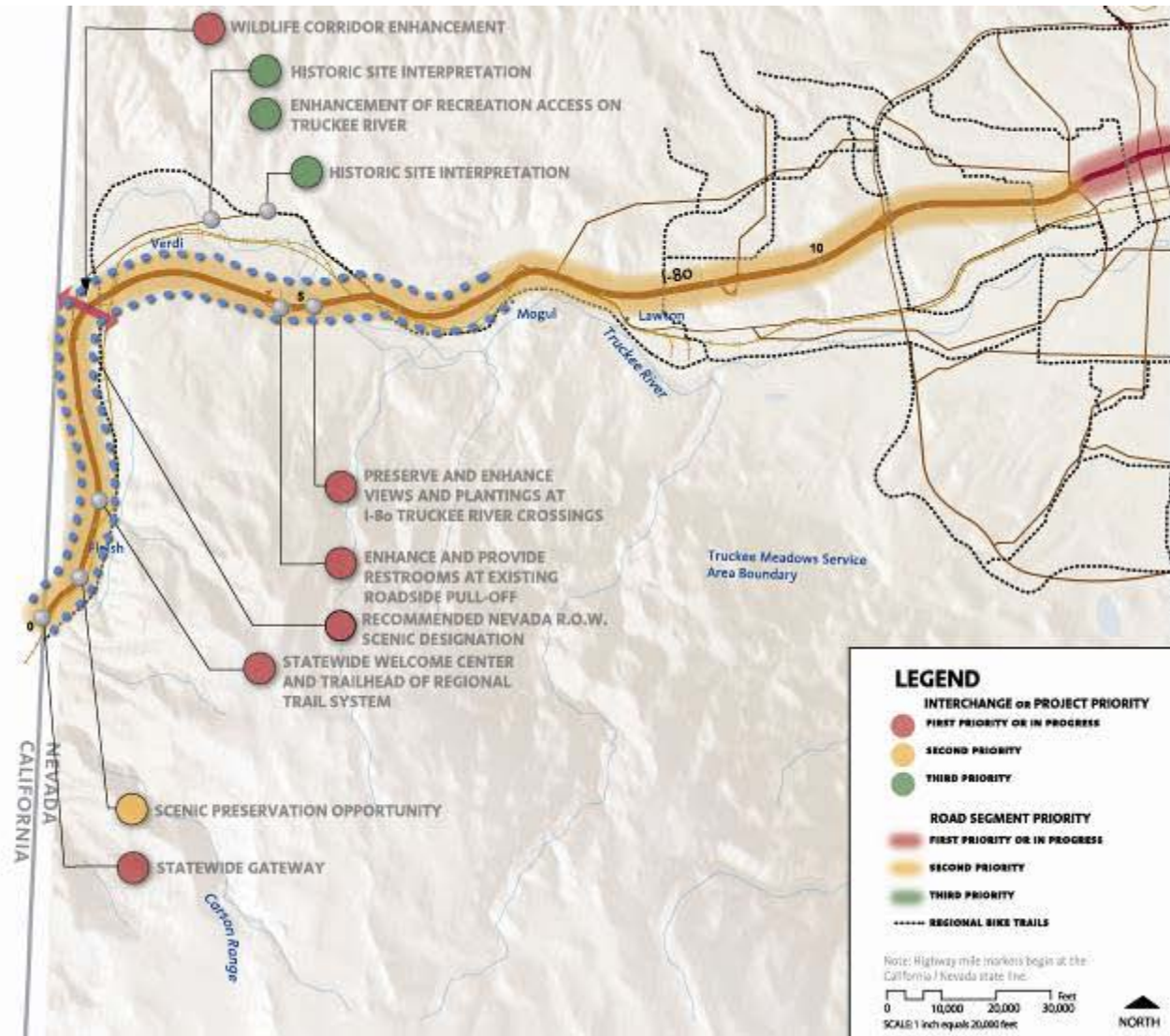
Sierra Nevada Passage

FEATURES ALONG ENTIRE CORRIDOR

- ROAD CORRIDOR TRASH CLEAN-UP
- PAINT/STAIN RETROFIT OF BRIDGES AND STRUCTURES
- ANALYZE WILDLIFE MOVEMENTS AND PROVIDE APPROPRIATE CROSSING STRUCTURES
- STATEWIDE PLACE NAME SIGNAGE

FEATURES ALONG THE SIERRA NEVADA LANDSCAPE DESIGN SEGMENT

- TAHOE PYRAMID BIKEWAY
- PRESERVE SCENIC QUALITY THROUGH COORDINATION WITH APPROPRIATE AGENCIES AND ORGANIZATIONS
- SCREEN INDUSTRIAL USES WHERE FEASIBLE

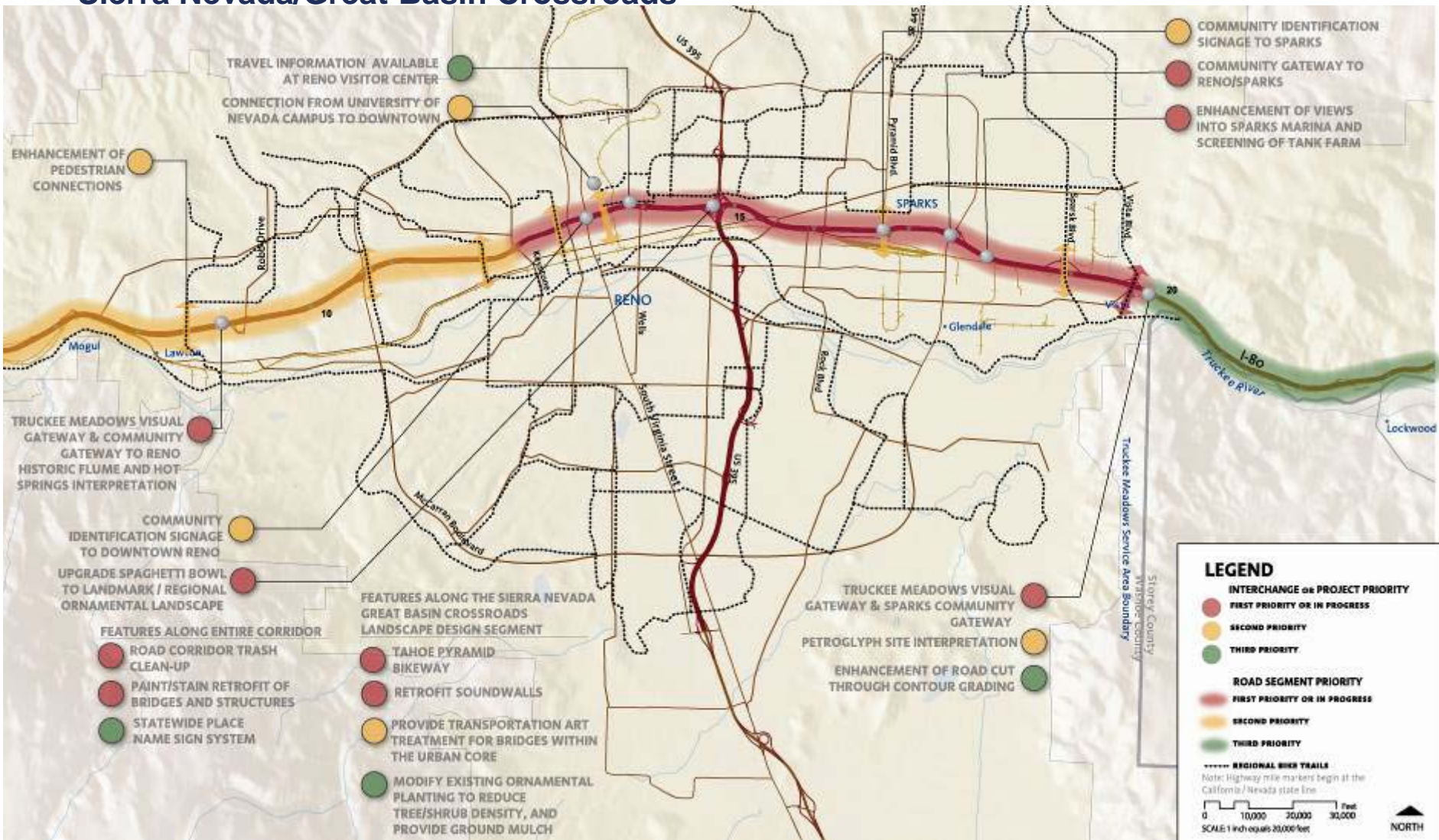


landscape and aesthetics corridor planning

DESIGN WORKSHOP
Jones & Jones
MacKay & Soms
IW Zunino & Assoc.
CH2MHill



Opportunities and Priorities Sierra Nevada/Great Basin Crossroads



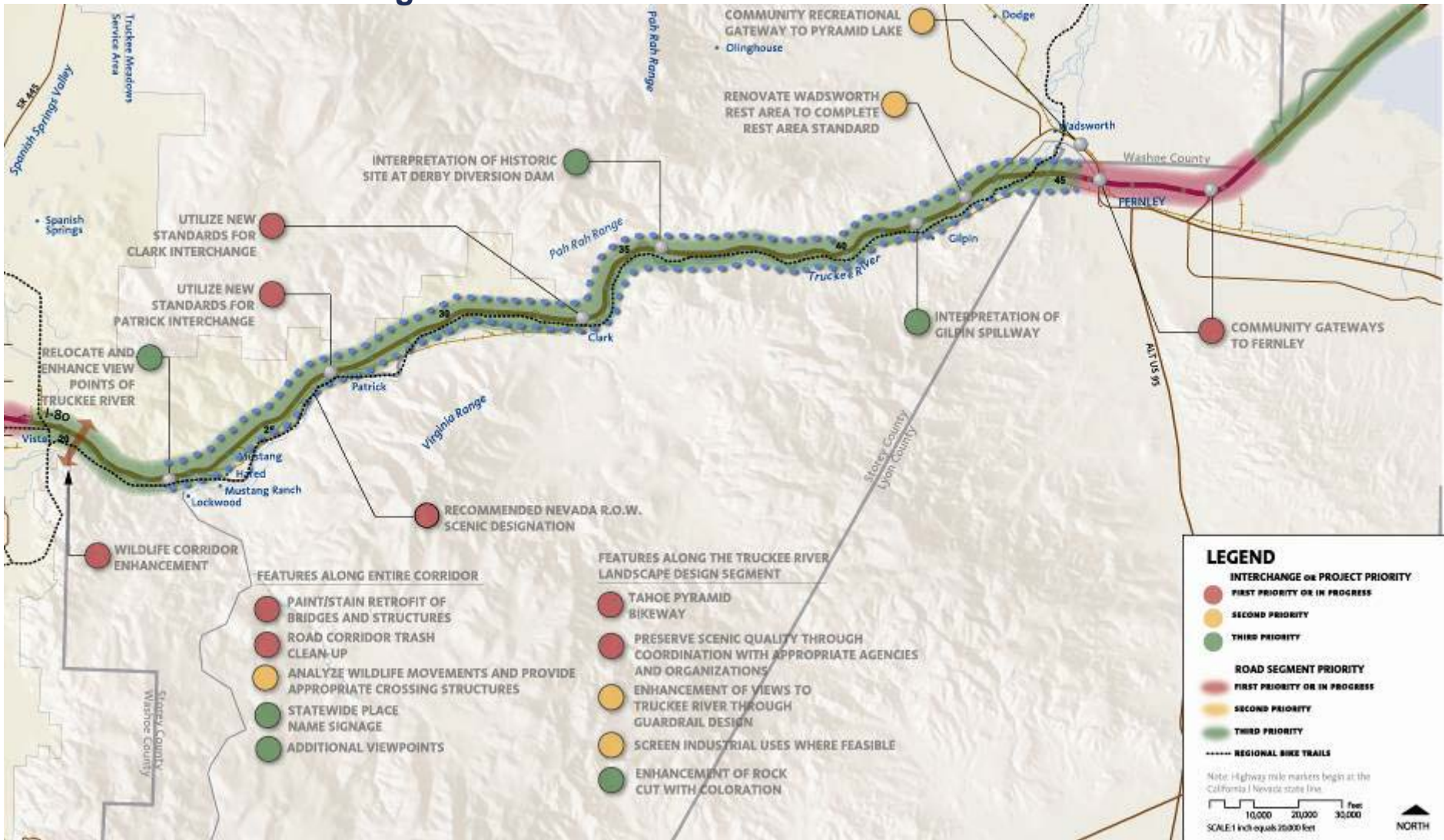
landscape and aesthetics corridor planning

I-80, & US 95 FROM WINNEMUCCA TO McDERMITT

DESIGN WORKSHOP
Jones & Jones
MacKay & Somp
IW Zunino & Assoc.
CH2MHill



Opportunities and Priorities Truckee River Passage



landscape and aesthetics corridor planning

DESIGN WORKSHOP
Jones & Jones
MacKay & Somp
IW Zunino & Assoc.
CH2MHill



Design Guidelines

- Provide a framework for improving landscape and aesthetics.
- Establish qualitative levels of design to meet the objectives of each Landscape Design Segment.
- Address topics including:
 - Project Design Process
 - Welcome Centers & Statewide Gateways
 - Community Gateways
 - Rest Areas, Viewpoints, and Pull-offs
 - Signage
 - Transportation Art
 - Color
 - Non-motorized Transportation Systems
 - Bridges
 - Retaining Walls
 - Sound Walls & Visual Screen Walls
 - Lighting
 - Grading
 - Revegetation Methods and Plant Material
 - Sustainable Highway Environments

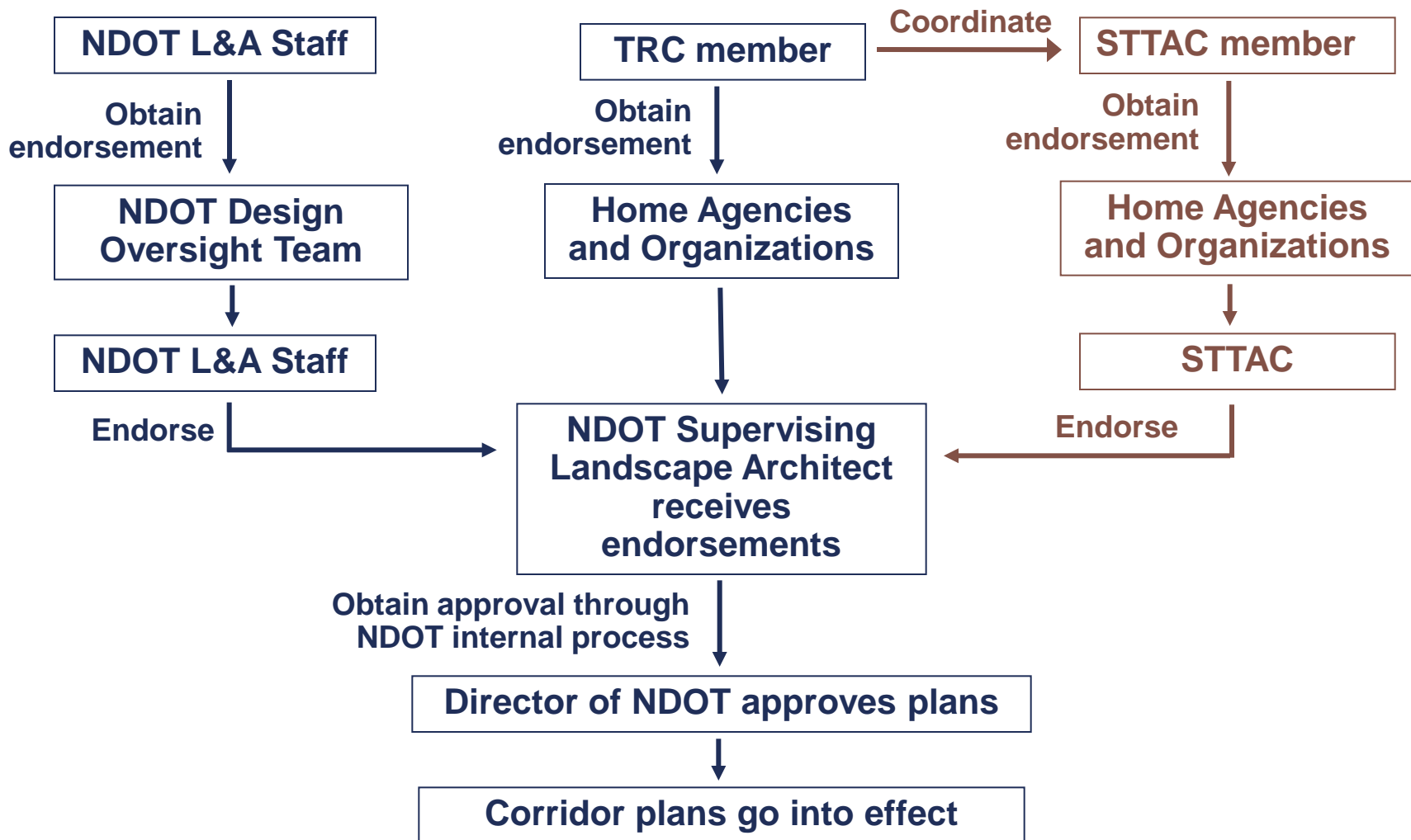


Endorsement

- Agree in principle with the landscape and aesthetic opportunities identified within your jurisdiction; including the design objectives and guidelines for the corridor; and the priority levels assigned to landscape and aesthetic projects.
- Agree in principle to work in partnership with NDOT to develop a highway system that reflects the land and people of Nevada.
- Support the vision expressed in the *Landscape and Aesthetics Master Plan* of highways that are aesthetically pleasing, as well as safe and cost effective.
- Endorse the Corridor Plan as a management tool for integrating landscape and aesthetics into all aspects of the planning, design, construction, operations, and maintenance of State-managed highways in Nevada.
- Provide NDOT with signed letter verifying that your agency or organization voted to endorse the *Landscape and Aesthetics Corridor Plan* prepared by the Nevada Department of Transportation for the I-80 corridor.



Endorsement Process



Schedule

No later than

April 7

STTAC members complete briefings to officials and agencies.

April 29

Officials, agencies, and NDOT staff endorse corridor plans

June 13

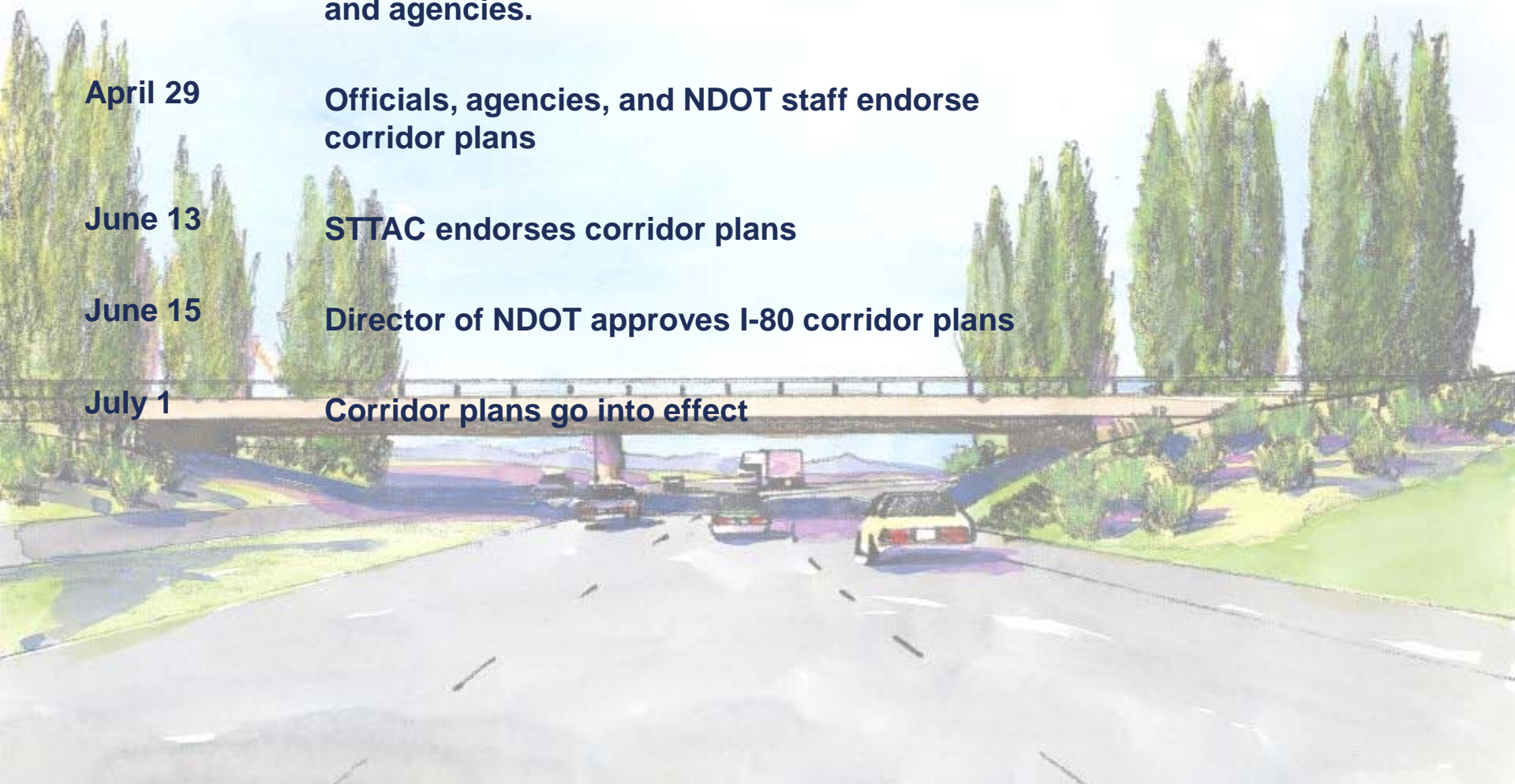
STTAC endorses corridor plans

June 15

Director of NDOT approves I-80 corridor plans

July 1

Corridor plans go into effect



landscape and aesthetics corridor planning

DESIGN WORKSHOP
Jones & Jones
MacKay & Somp
IW Zunino & Assoc.
CH2MHill

