



High Occupancy Vehicles

HOV

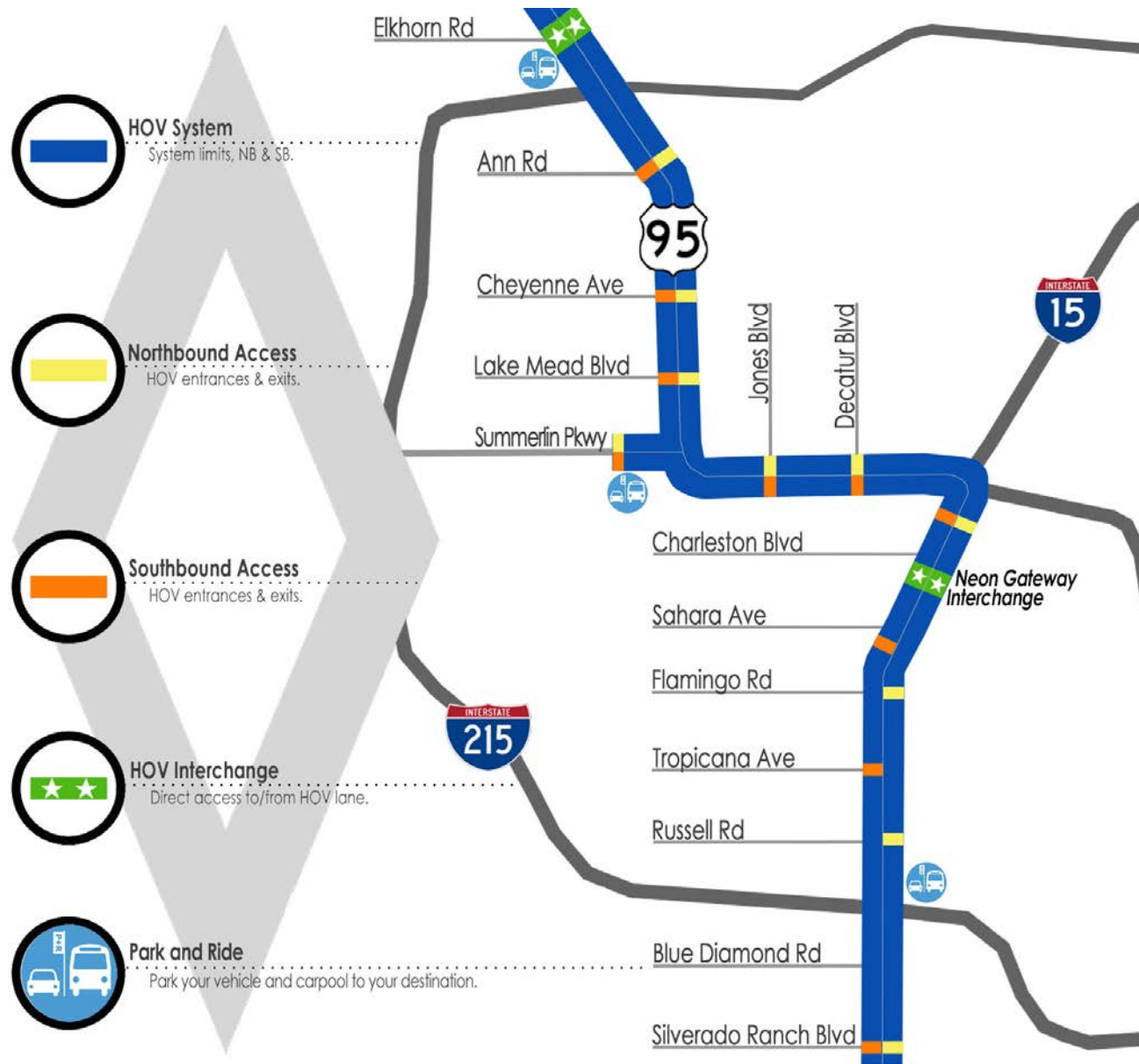
&

Active Traffic Management

ATM



New HOV System



HOV Rules



ILLEGAL TO CROSS SOLID DOUBLE WHITE LINES.

HOV Benefits



US 95/I-15 HOV Connector



Saves money

Reduced fuel & vehicle costs.



Less congestion

Ride-sharing = Fewer vehicles on the road.



Saves time

Faster commutes, less idle time.

Better connectivity

20+ continuous miles of HOV in the valley.



Improved air quality

Fewer vehicles + less idle time.



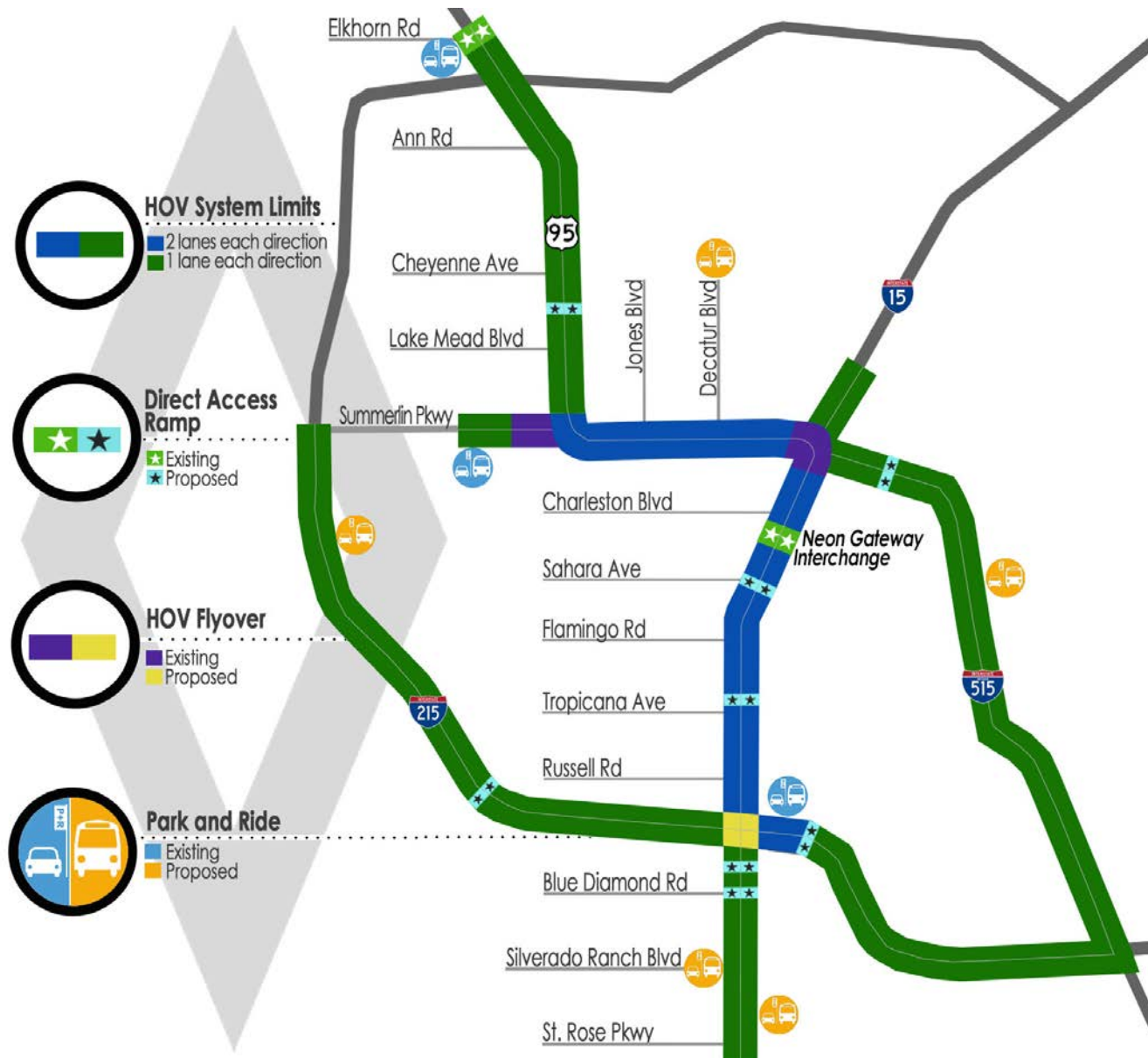
System efficiency

Moving more people
in fewer vehicles.



Neon Gateway HOV Interchange
located just south of Charleston

HOV Future



ATM System



Lane open to traffic.



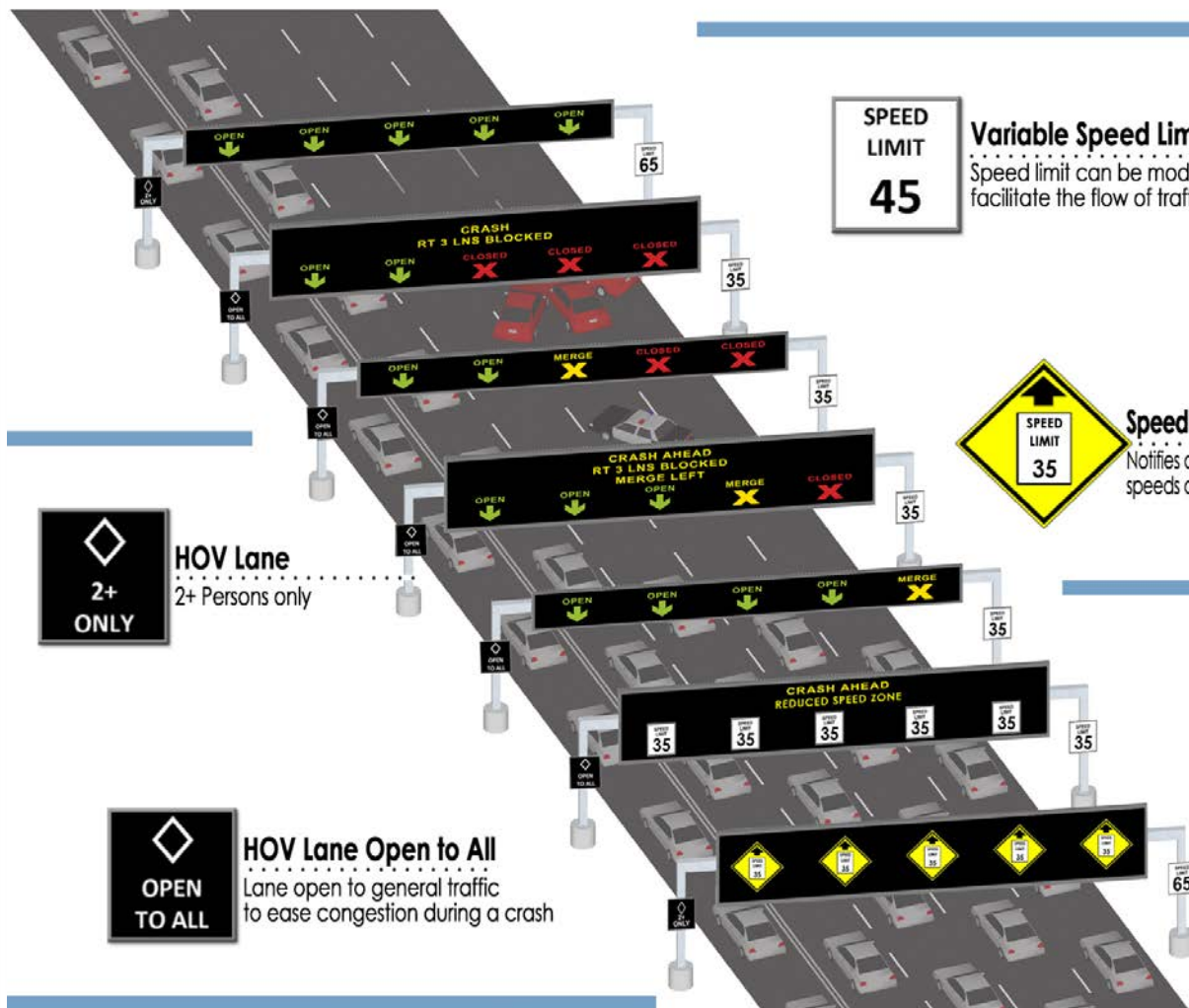
Proceed with caution.



Lane closing ahead
Prepare to merge.



Lane closed to traffic.



**SPEED
LIMIT**
45

Variable Speed Limit

Speed limit can be modified to facilitate the flow of traffic



Speed Reduction Warning

Notifies drivers of reduced speeds ahead



HOV Lane
2+ Persons only



HOV Lane Open to All
Lane open to general traffic to ease congestion during a crash

ATM Benefits



Reduces number and
severity of crashes
.....



Travel lane management
.....



Supports work zone
management
.....



Improves trip reliability,
accuracy of posted travel times
.....



Ability to open
HOV lanes to all
.....



Increases safety
.....



Improves operations
.....



Speed
harmonization
.....