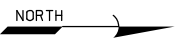


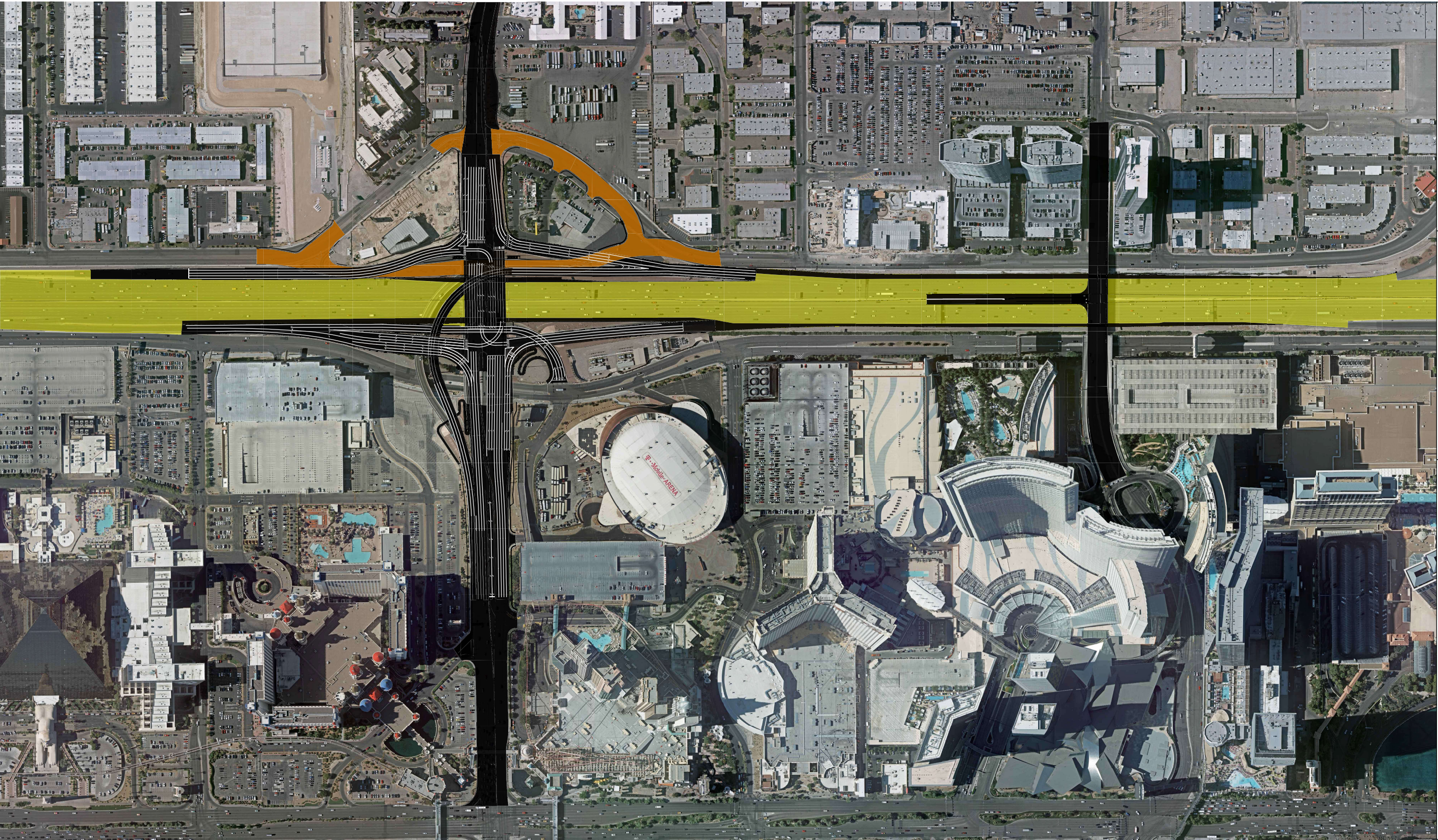
I-15 Tropicana
Interchange
Phase 2 Major



**PRELIMINARY
ONLY**

SUBJECT TO REVISION

- LEGEND-
- MILL AND OVERLAY
 - CONSTRUCTED
 - STAGING AREA
 - BUILD BRIDGE
 - BUILD ROADWAY
 - REMOVED AREA
 - BUILD STORM DRAIN



I-15 Tropicana
Interchange
Phase 3 Major

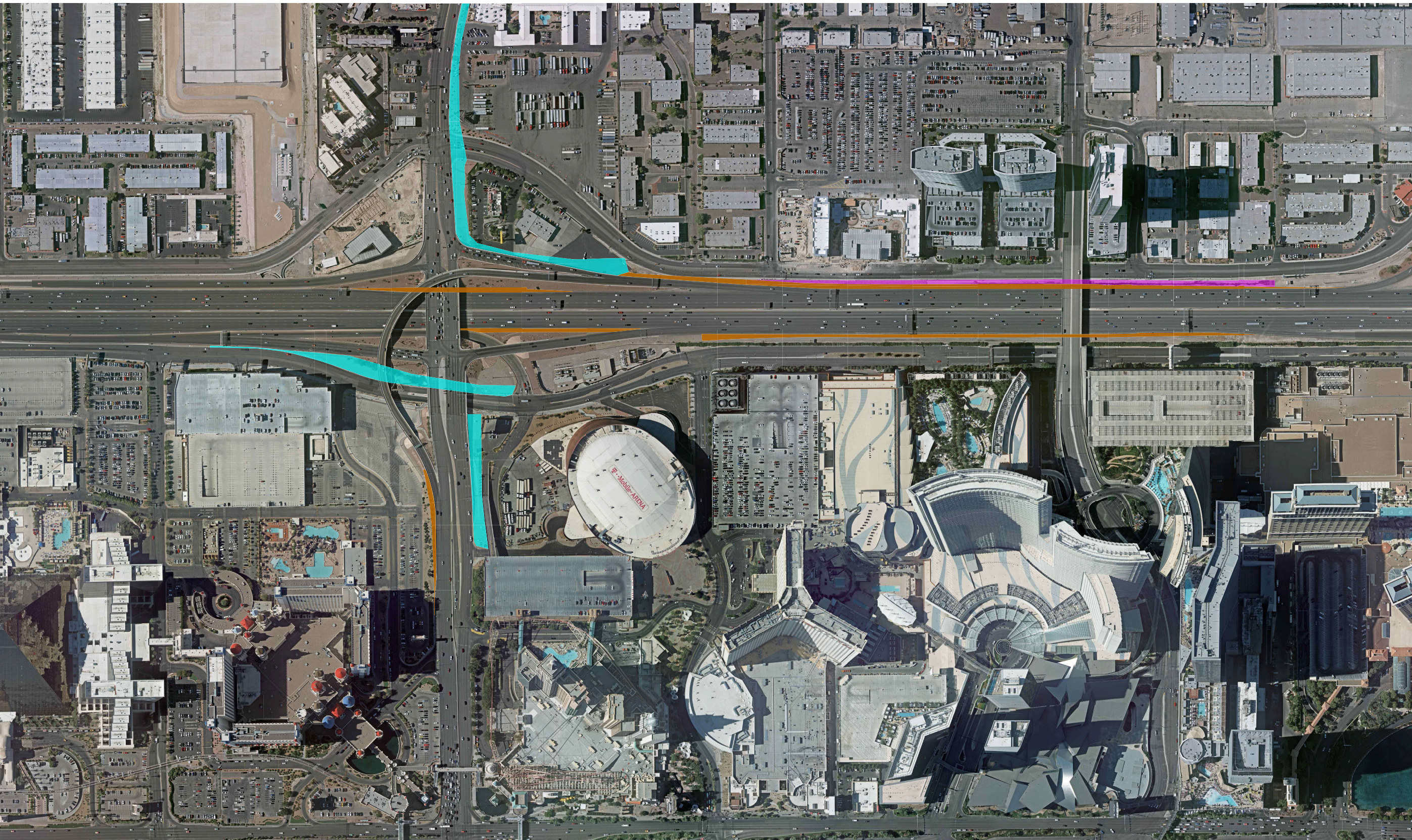
NORTH

PRELIMINARY
ONLY

SUBJECT TO REVISION

-LEGEND-

- MILL AND OVERLAY
- CONSTRUCTED
- BUILD ROADWAY






I-15 Tropicana
Interchange
Phase 0 Major

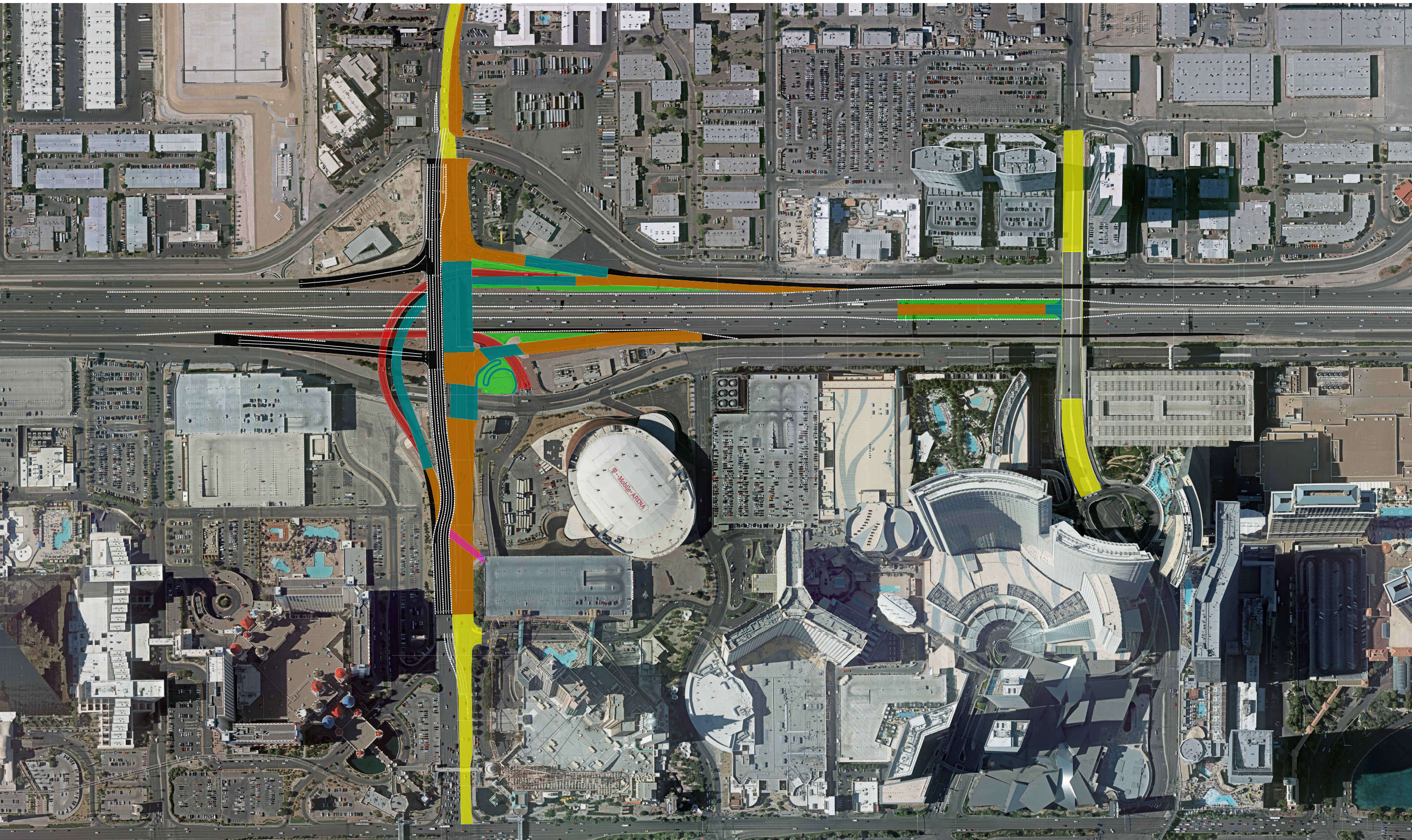


**PRELIMINARY
ONLY**

SUBJECT TO REVISION

-LEGEND-

-  UTILITY WORK
-  BUILD ROADWAY
-  BUILD STORM DRAIN



I-15 Tropicana
Interchange
Phase 1 Major



**PRELIMINARY
ONLY**

SUBJECT TO REVISION

-LEGEND-

-  MILL AND OVERLAY
-  STRIPING
-  USABLE ROADWAY
-  STAGING AREA
-  BUILD BRIDGE
-  BUILD ROADWAY
-  REMOVED AREA
-  BUILD STORM DRAIN