



Transportation Board of Directors
NDOT Director's Report

Kristina Swallow, P.E., Director

September 14, 2020

Welcome, Justin Kalb!



FATALITIES BY COUNTY:



TOTAL LIVES LOST YTD:

189 ↑

UP 3.85% FROM LAST YEAR

FATALITIES



PEDESTRIANS

54

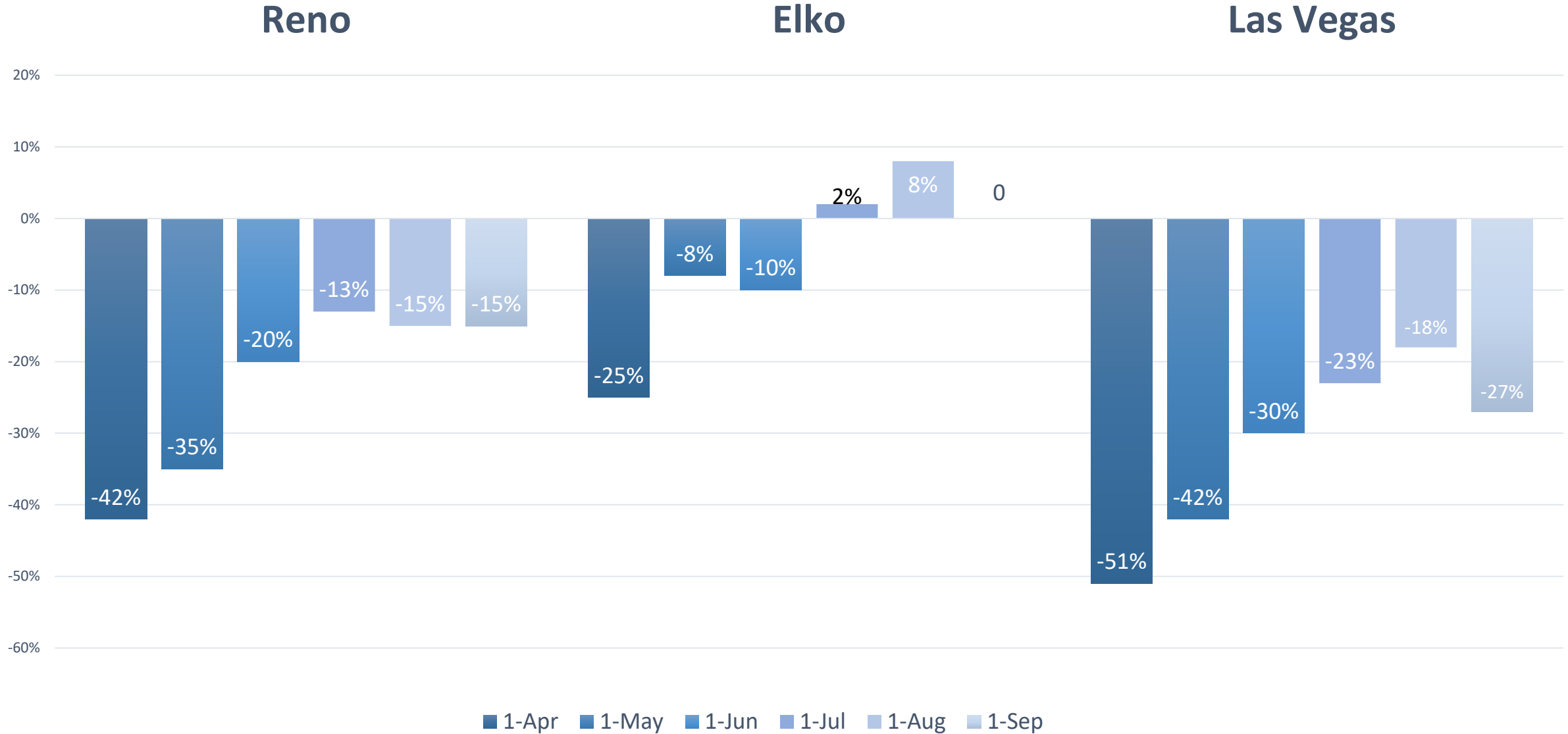


UNRESTRAINED
MOTORISTS

45

TOP CAUSES: **IMPAIRMENT & SPEEDING**

COVID TRAFFIC IMPACTS



RENO SPAGHETTI BOWL



LOOKING FORWARD - FUTURE INTERSTATE 11

Las Vegas Metropolitan Area

Tier 1 EIS to Determine Alignment Through Las Vegas

Three Potential Corridors;

Western – Boulder City Bypass, 215, US 95

Central – Boulder City Bypass, I-515, US 95

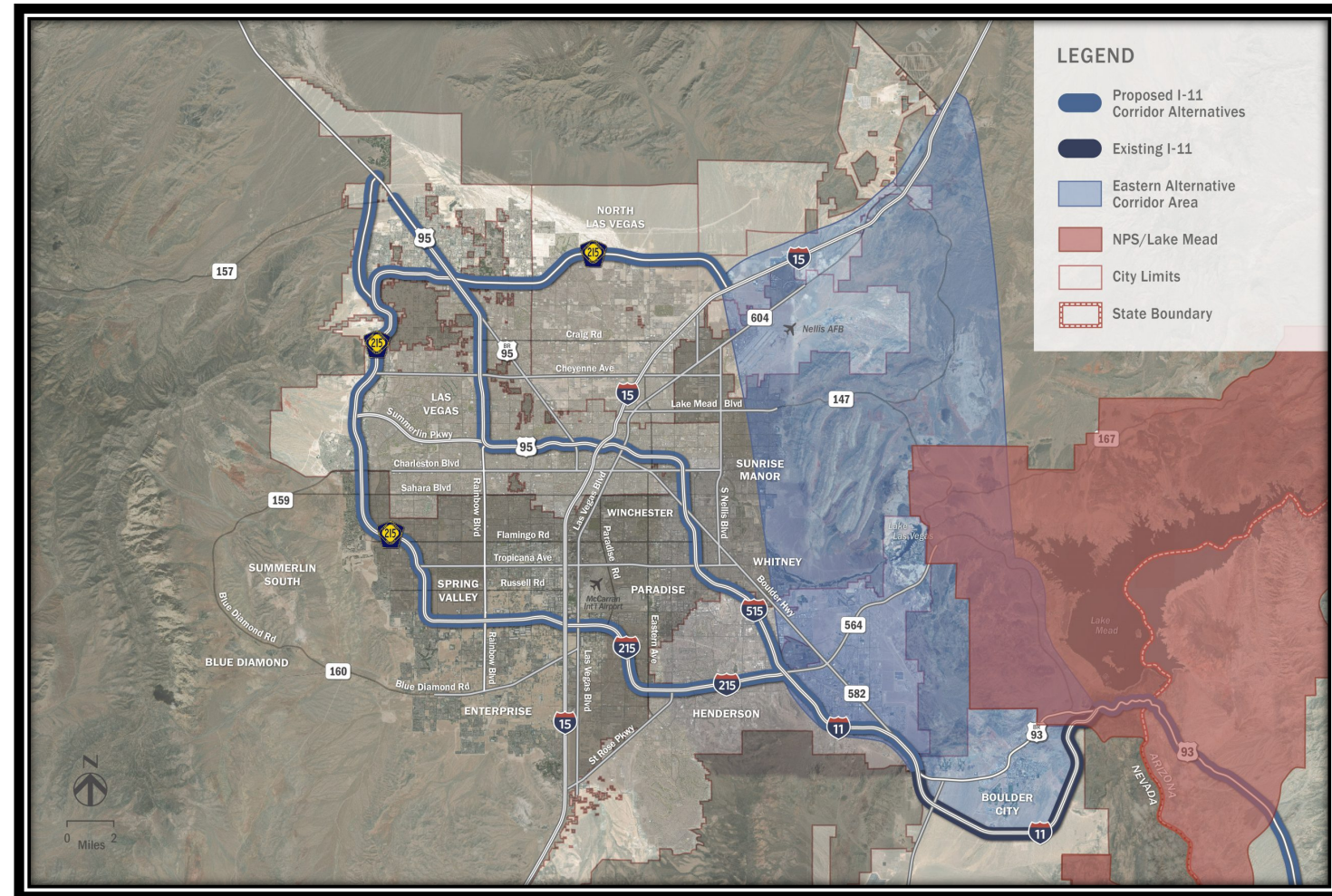
Eastern – Several potential Routes to 215

- Partner with Stakeholders and Communities to Ensure Best Location for Commerce and our Community

Next Steps

- Prioritize Future I-11 Projects and Identify Funding
- Tier 2 NEPA Analysis to Conduct Advanced Corridor Studies for Specific Segments

Web Page; I11NV.com



DOWNTOWN ACCESS PROJECT



NEVADA NAMED BEST INFRASTRUCTURE





AUGUST REDISTRIBUTION

History of NDOT August Redistribution
Obligation Limitation Received
2015 – 2020

FFY	August Redistribution
2015	10,346,020
2016	20,000,000
2017	21,635,649
2018	32,196,070
2019	26,624,678
2020	46,815,268





Kristina Swallow, P.E., NDOT Director
kswallow@dot.nv.gov | (775) 888-7440