



Transportation Board of Directors
NDOT Director's Report

Kristina Swallow, P.E., Director

October 12, 2020

FATALITIES BY COUNTY:



TOTAL LIVES LOST YTD:

224 

UP 6% FROM LAST YEAR

FATALITIES



PEDESTRIANS

62



UNRESTRAINED MOTORISTS

57

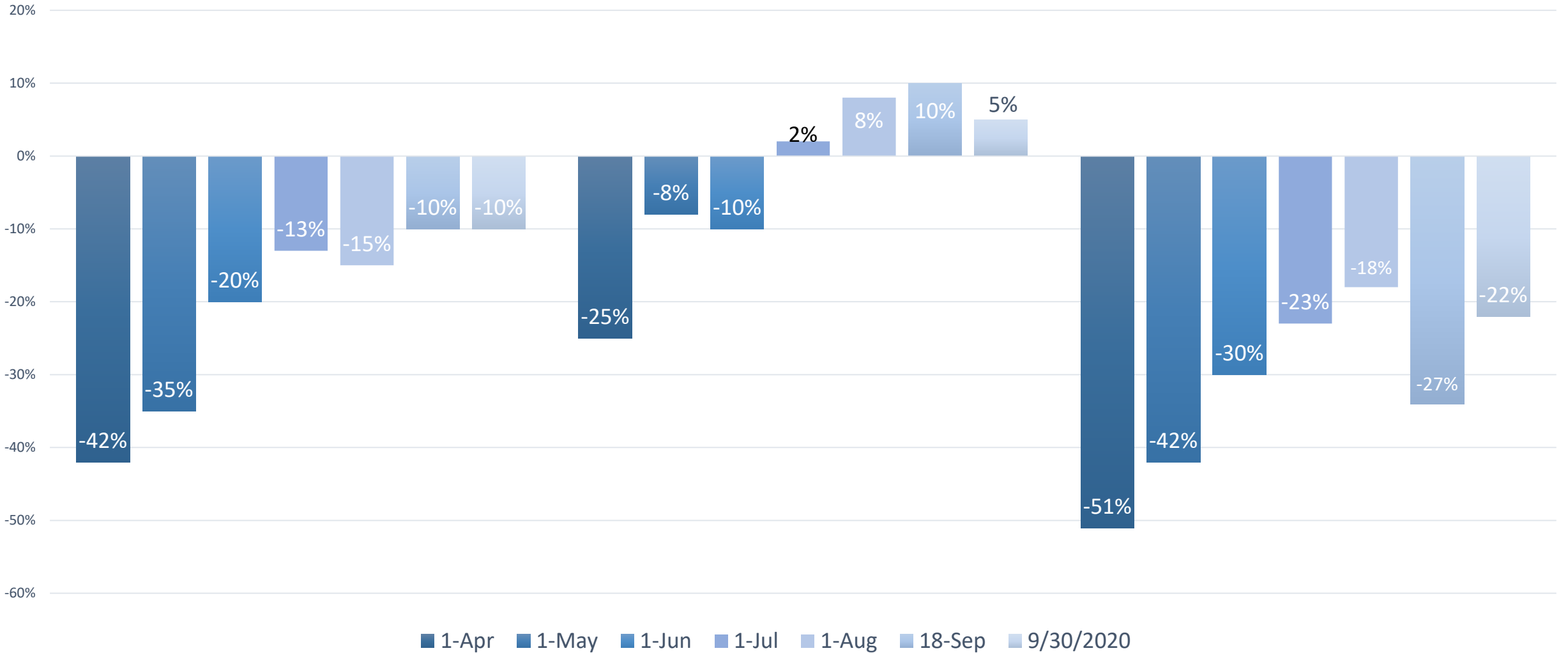
TOP CAUSES: **IMPAIRMENT & SPEEDING**

COVID TRAFFIC IMPACTS

Reno

Elko

Las Vegas





FUEL TAX REVENUE & BOND COVERAGE RATIOS

Motor Vehicle Fuel Tax Highway Revenue Bonds (\$ in millions)						
Fiscal Year Ended	Outstanding Debt Service	Series 2020A Bonds Debt Service	Total Debt Service	Actual & Projected Revenue	Actual & Projected Debt Service Coverage	Revenue at 3X Coverage
6/30/2019	\$78.48		\$78.48	\$310.84	3.96	\$235.44
6/30/2020	\$73.59		\$73.59	\$296.39	4.03	\$220.76
6/30/2021	\$73.53	\$1.98	\$75.52	\$290.78	3.85	\$226.55
6/30/2022	\$64.24	\$5.79	\$70.03	\$290.78	4.15	\$210.10
6/30/2023	\$64.17	\$5.79	\$69.96	\$290.78	4.16	\$209.88
6/30/2024	\$63.97	\$5.79	\$69.77	\$290.78	4.17	\$209.30
6/30/2025	\$63.82	\$5.79	\$69.61	\$290.78	4.18	\$208.83
6/30/2026	\$63.67	\$5.79	\$69.46	\$290.78	4.19	\$208.38
6/30/2027	\$63.62	\$5.79	\$69.41	\$290.78	4.19	\$208.23
6/30/2028	\$63.37	\$5.79	\$69.16	\$290.78	4.20	\$207.49
6/30/2029	\$63.22	\$5.79	\$69.01	\$290.78	4.21	\$207.02
6/30/2030	\$63.54	\$5.79	\$69.33	\$290.78	4.19	\$208.00
6/30/2031	\$54.55	\$5.79	\$60.34	\$290.78	4.82	\$181.03
6/30/2032	\$53.84	\$5.79	\$59.63	\$290.78	4.88	\$178.90
6/30/2033	\$53.36	\$5.79	\$59.15	\$290.78	4.92	\$177.46
6/30/2034	\$52.79	\$5.79	\$58.59	\$290.78	4.96	\$175.76
6/30/2035	\$52.27	\$5.79	\$58.06	\$290.78	5.01	\$174.19
6/30/2036	\$14.66	\$5.79	\$20.46	\$290.78	14.21	\$61.37
6/30/2037	\$14.19	\$5.79	\$19.98	\$290.78	14.55	\$59.95
6/30/2038	\$13.72	\$5.79	\$19.51	\$290.78	14.90	\$58.54
6/30/2039	\$0.00	\$5.79	\$5.79	\$290.78	50.19	\$17.38
6/30/2040	\$0.00	\$5.79	\$5.79	\$290.78	50.21	\$17.37
6/30/2041	\$0.00	\$5.79	\$5.79	\$290.78	50.20	\$17.38

Fuel Revenue Indexed Bonds - Clark County (\$ in millions)				
Fiscal Year Ended	Series 2020B Bonds Debt Service	Actual & Projected Revenue	Actual & Projected Debt Service Coverage	Revenue at 2X Coverage
6/30/2020		\$11.96		
6/30/2021	\$1.25	\$12.03	9.65	\$2.50
6/30/2022	\$3.54	\$12.03	3.40	\$7.09
6/30/2023	\$3.54	\$12.03	3.40	\$7.09
6/30/2024	\$3.55	\$12.03	3.39	\$7.09
6/30/2025	\$3.55	\$12.03	3.39	\$7.09
6/30/2026	\$3.54	\$12.03	3.40	\$7.09
6/30/2027	\$3.55	\$12.03	3.39	\$7.09
6/30/2028	\$3.55	\$12.03	3.39	\$7.09
6/30/2029	\$3.55	\$12.03	3.39	\$7.09
6/30/2030	\$3.55	\$12.03	3.39	\$7.09
6/30/2031	\$3.54	\$12.03	3.40	\$7.09
6/30/2032	\$3.54	\$12.03	3.40	\$7.09
6/30/2033	\$3.55	\$12.03	3.39	\$7.09
6/30/2034	\$3.54	\$12.03	3.40	\$7.08
6/30/2035	\$3.55	\$12.03	3.39	\$7.09
6/30/2036	\$3.54	\$12.03	3.40	\$7.09
6/30/2037	\$3.54	\$12.03	3.40	\$7.09
6/30/2038	\$3.54	\$12.03	3.40	\$7.09
6/30/2039	\$3.55	\$12.03	3.39	\$7.09
6/30/2040	\$3.54	\$12.03	3.40	\$7.09
6/30/2041	\$3.55	\$12.03	3.39	\$7.09

Motor Vehicle Fuel Tax Bonds \$100M Bond Sale:

Interest cost:

- Projected - 3.30%
- Actual - 1.5649%

Annual Payment:

- Projected - Approx. \$6.6M
- Actual - Approx. \$5.8M

Fuel Revenue Indexed Bonds \$60M Bond Sale:

Interest cost:

- Projected - 3.42%
- Actual - 1.7527%

Annual Payment:

- Projected - Approx. \$4M
- Actual - Approx. \$3.6M

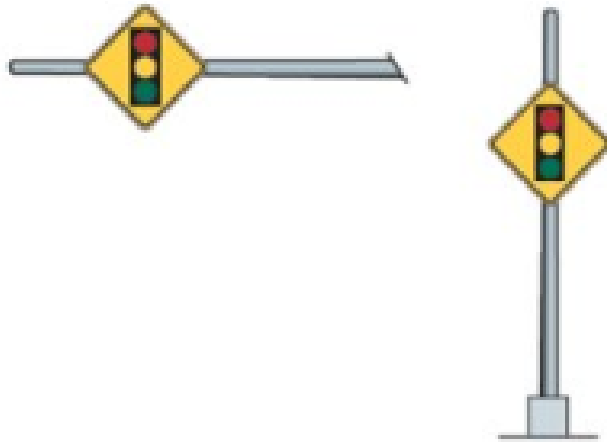
ADVANCE SIGNAL WARNING SYSTEMS



ADVANCE SIGNAL WARNING SYSTEMS

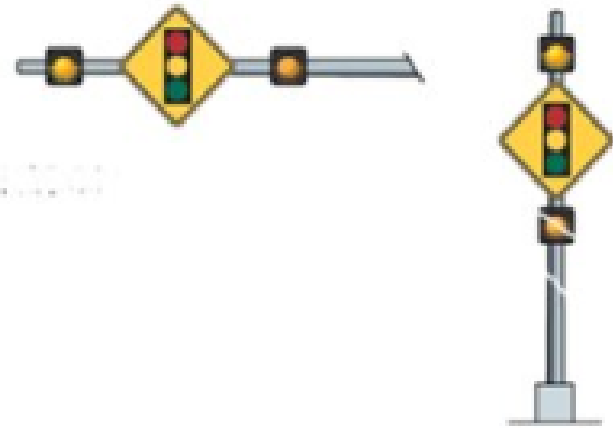
STATIC ASWS

Signage Messaging only



PASSIVE ASWS

Includes signage and a continuous flashing beacon



ACTIVE ASWS

Includes signage and a flashing beacon that is connected to the signal controller. Only flashes when signal change is pending



ASWS UPDATES FOR NEVADA STATEWIDE

For more information, visit nvsafesignals.com



PARR BRIDGE REOPENS



CONTINUING RESOLUTION







Kristina Swallow, P.E., NDOT Director
kswallow@dot.nv.gov | (775) 888-7440