



February 16, 2021

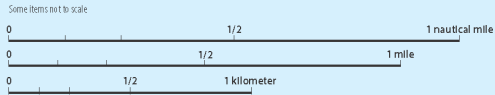


**PORT OF OAKLAND
SEAPORT**

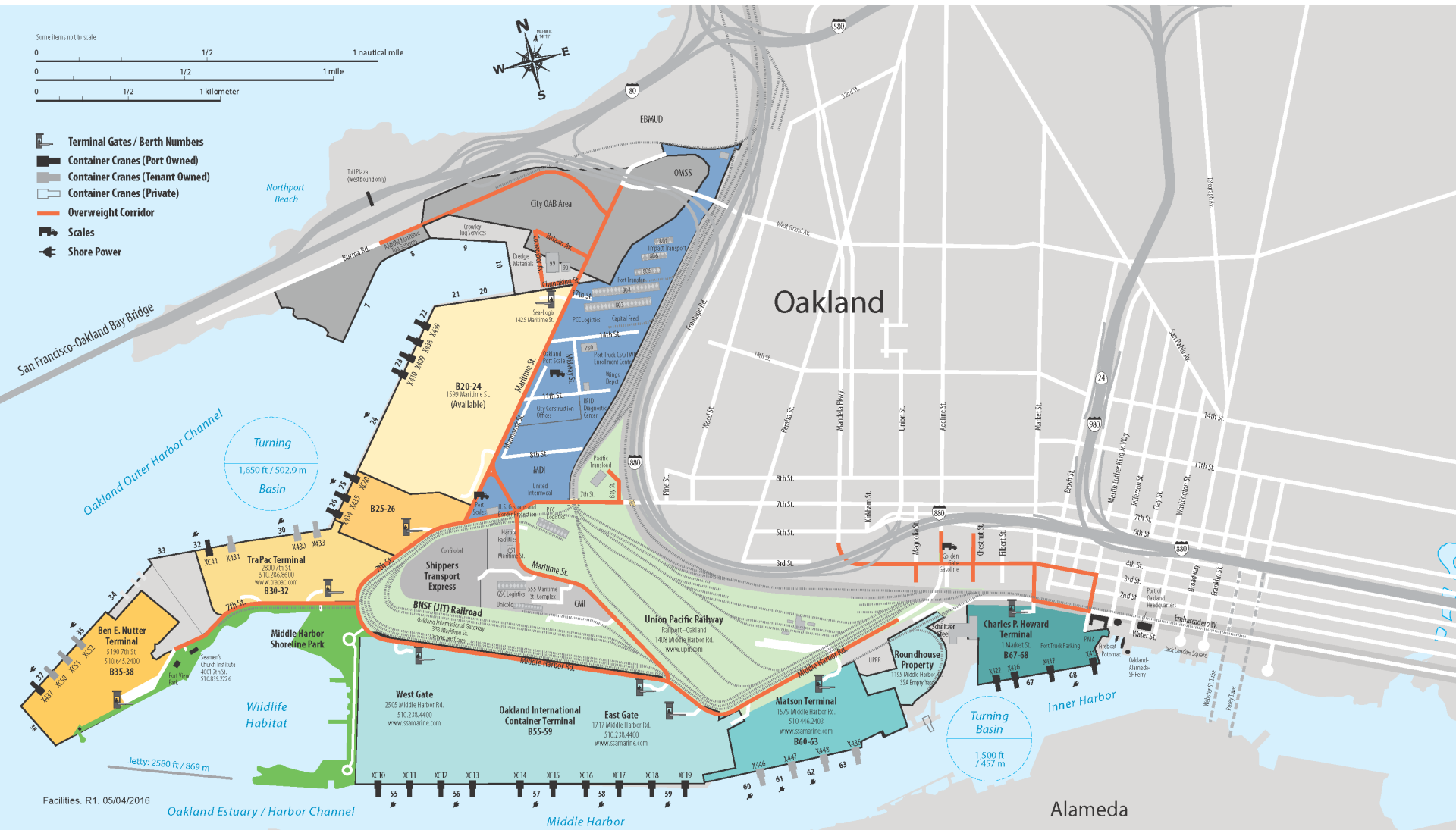
Topics

- Oakland By The Numbers
- Update On Recent Events
- Strategic Initiatives
- Rail At The Port of Oakland
- Ongoing Key Improvements

Seaport Facilities



- Terminal Gates / Berth Numbers
- Container Cranes (Port Owned)
- Container Cranes (Tenant Owned)
- Container Cranes (Private)
- Overweight Corridor
- Scales
- Shore Power



Facilities. R1. 05/04/2016

Oakland Estuary / Harbor Channel

Middle Harbor

Alameda

Port of Oakland by the Numbers

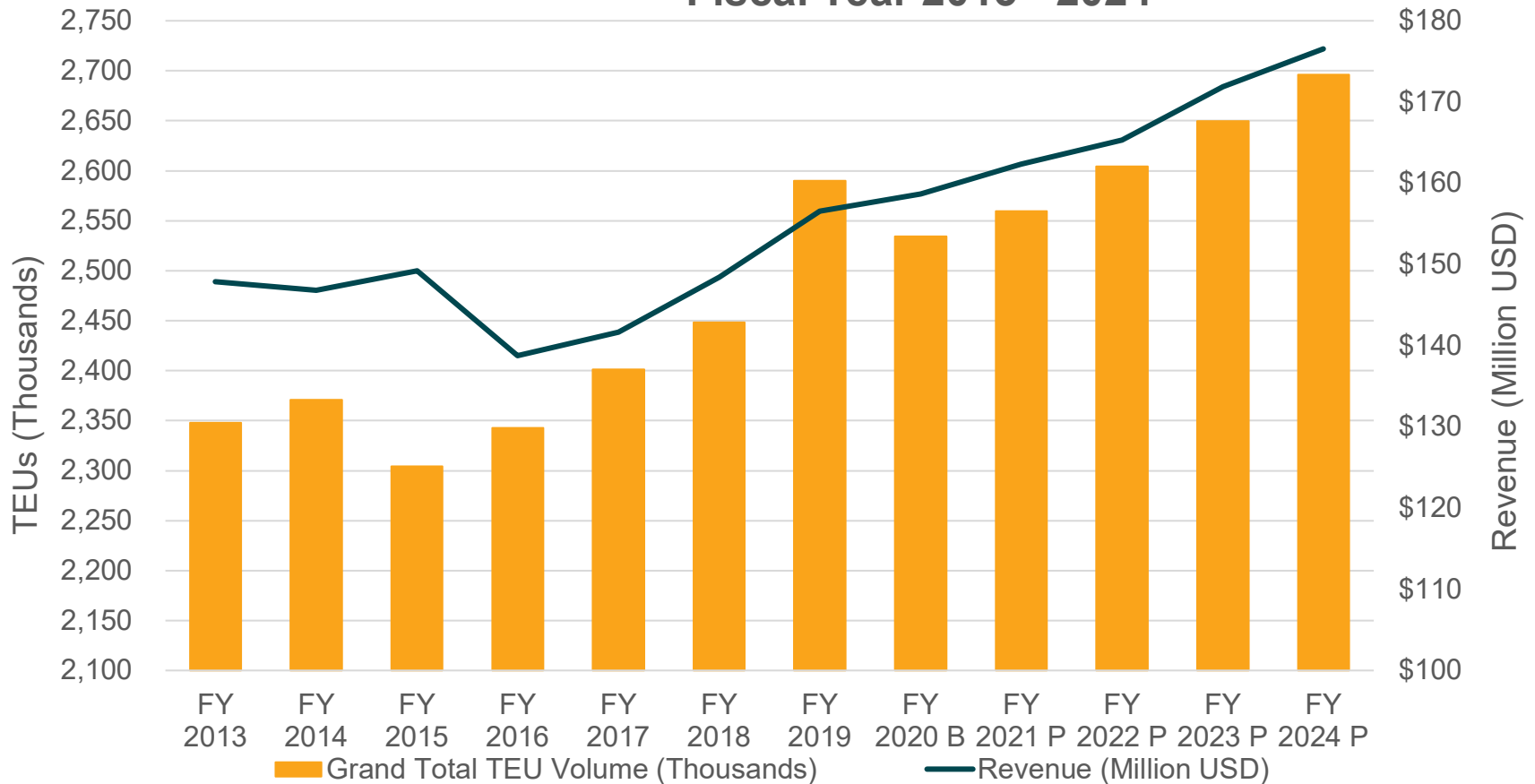
- **4 active** marine terminals
- **3 terminal operators** SSA, Everport, & Trapac
- **33 Cranes** of which 23 are Port-owned
- **2.46 million TEUs** handled in 2020
- **20 ocean carriers** with service to/from Oakland
- **1,258 vessel calls** in 2020

Port Volume 2019 vs. 2020

- Full Imports 2019: 975,198
- Full Imports 2020: 995,976 (+2.1%)
- Full Exports 2019: 931,019
- Full Exports 2020: 927,799 (-0.3%)
- MTY Imports 2019: 191,237
- MTY Imports 2020: 192,269 (+0.5%)
- MTY Exports 2019: 402,977
- MTY Exports 2020: 345,237 (-14.3%)
- Total Laden & MTY TEU's 2019: 2,500,431
- Total Laden & MTY TEU's 2020: 2,461,281 (-1.6%)

Port Volume & Revenue Trends

Oakland Volume & Revenue Trends Fiscal Year 2013 - 2024



Notes: For TEU and Revenue figures, B = Budget, F = Forecast, and all other numbers are Actual
 Revenue excludes utility sales
 Fiscal Year is July 1 – June 30

Export Reefer Volume Performance

The Only U.S. Port With A Top 3 Export Reefer Volume Ranking 2010 thru YTD 2020

2010	2011	2012	2013	2014	2015	2016	2017	2018	2019	2020
SEA	SEA	OAK	SAV	SAV	TAC	TAC	OAK	OAK	OAK	OAK
OAK	LAX	LAX	OAK	LAX	LAX	OAK	TAC	LAX	SAV	SAV
LAX	OAK	SEA	HOU	OAK	OAK	LAX	SAV	SEA	SEA	LGB

Recent News

- Arrival of the **3 largest cranes** in North America that were purchased by SSA for \$35 million
- **First Port of Call** service initiated by CMA-CGM in over 10 years
 - Inland service to: Chicago, Dallas, Denver, Kansas City, Memphis, Salt Lake City, Oklahoma City
- **New major retailers** establishing new operations in Northern California

Strategic Initiatives

- **Express - Only** port of call
- **Short haul** rail serving major DCs in Nevada
- **Diversity** of services
 - Bulk, Aggregates, Breakbulk, RORO
 - Strategic rail component
- **Environmentally** conscious upgrades
 - Electric trucks
 - Hybrid RTGs
 - 2020 & Beyond Plan
 - Truck Management Plan
- **Seaport Logistics Complex**
 - Cross-docks / Distribution Center
 - Grain / Aggregate Transload
 - Fumigation

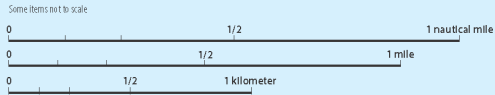
Rail Infrastructure

- Outer Harbor Intermodal Terminal
 - \$100 million investment, including over \$80m in public funds
 - Completed in 2017
 - 5 manifest yard tracks, 8 support yard tracks
 - 41,000 linear ft. of track
 - Capacity for up to 4 trains/day of 200 cars each

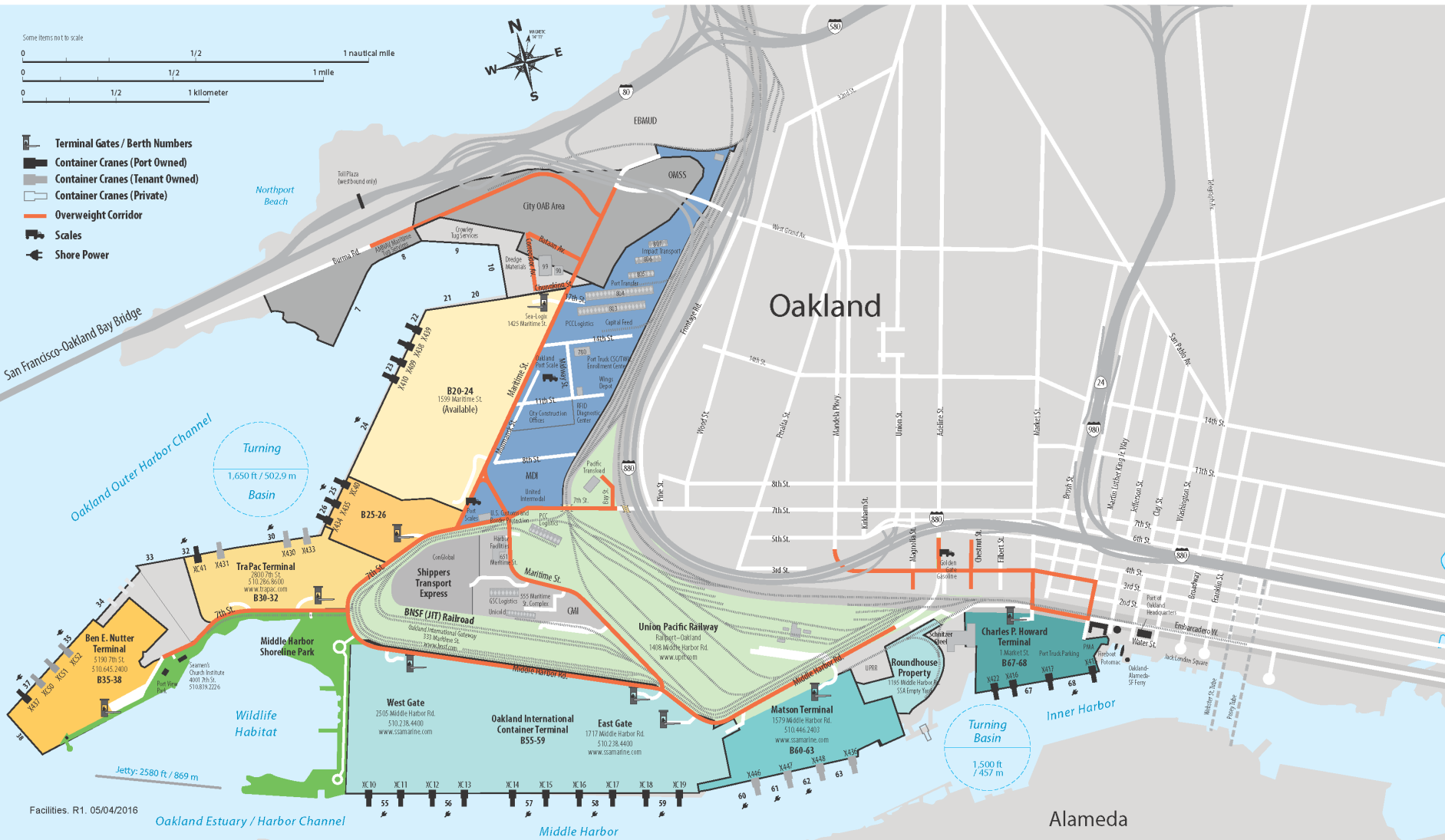


- Port of Oakland is Open to both Western Class 1 Railroads
- Three near dock rail yards: JIT, OHIT, UP
- Port is open to both intermodal and manifest service

Seaport Facilities



- Terminal Gates / Berth Numbers
- Container Cranes (Port Owned)
- Container Cranes (Tenant Owned)
- Container Cranes (Private)
- Overweight Corridor
- Scales
- Shore Power



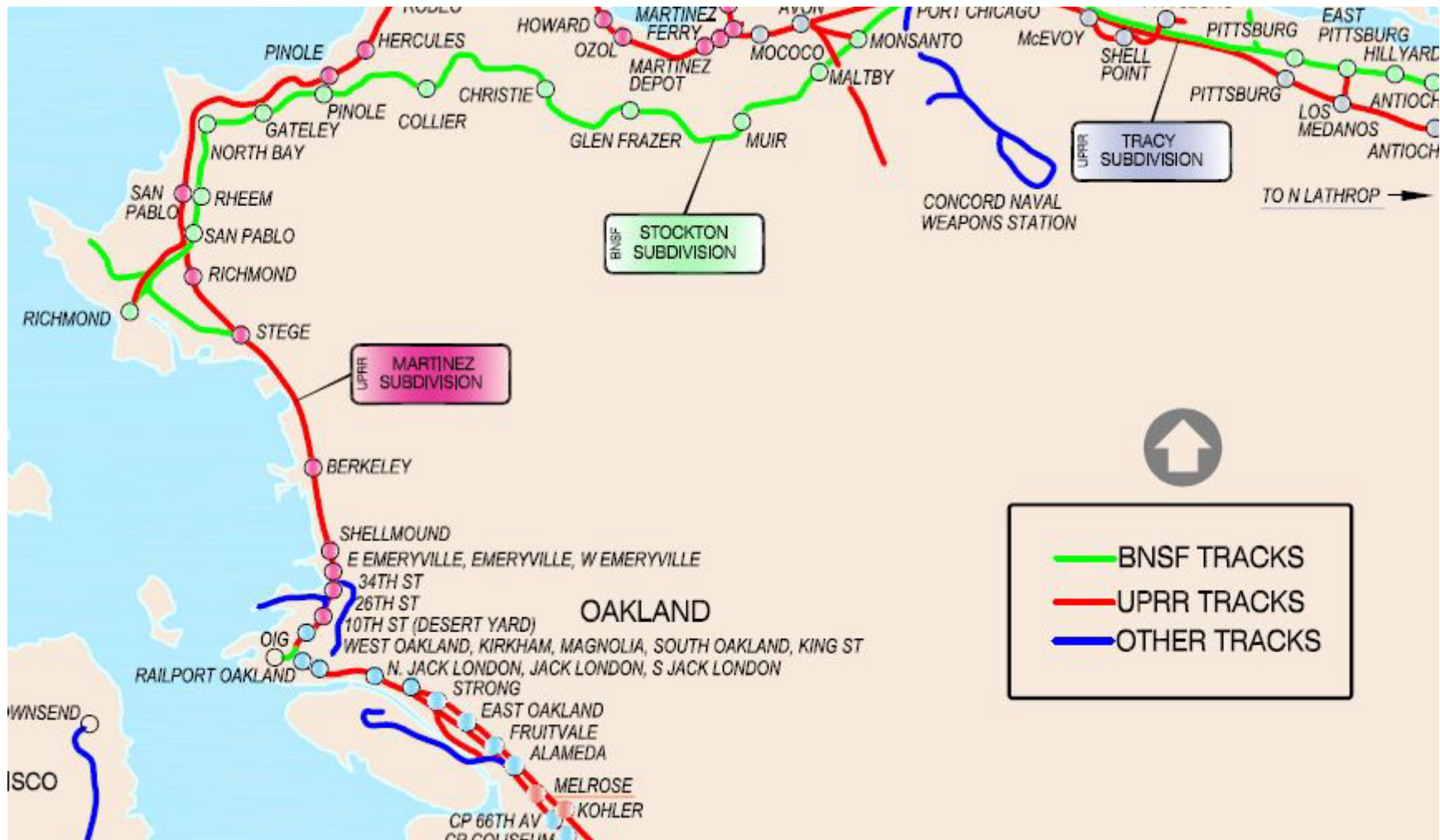
Facilities. R1. 05/04/2016

Oakland Estuary / Harbor Channel

Middle Harbor

Alameda

Port of Oakland – Rail Access



Regional DC-Warehouse Growth

Area	2019 Sq. Feet	Forecasted 2023 Sq. Feet
Northern Nevada	93,000,000	108,000,000
Lodi-Tracy-Lathrop	111,000,000	124,000,000
Merced	11,200,000	11,400,000
Fresno	83,000,000	93,300,000
Visalia	36,000,000	36,500,000
Bakersfield	51,000,000	56,000,000

Source:

Jones, Lang & LaSalle – CA Central Valley Data

Reno Sparks Tahoe Economic Development Authority – Northern NV Data

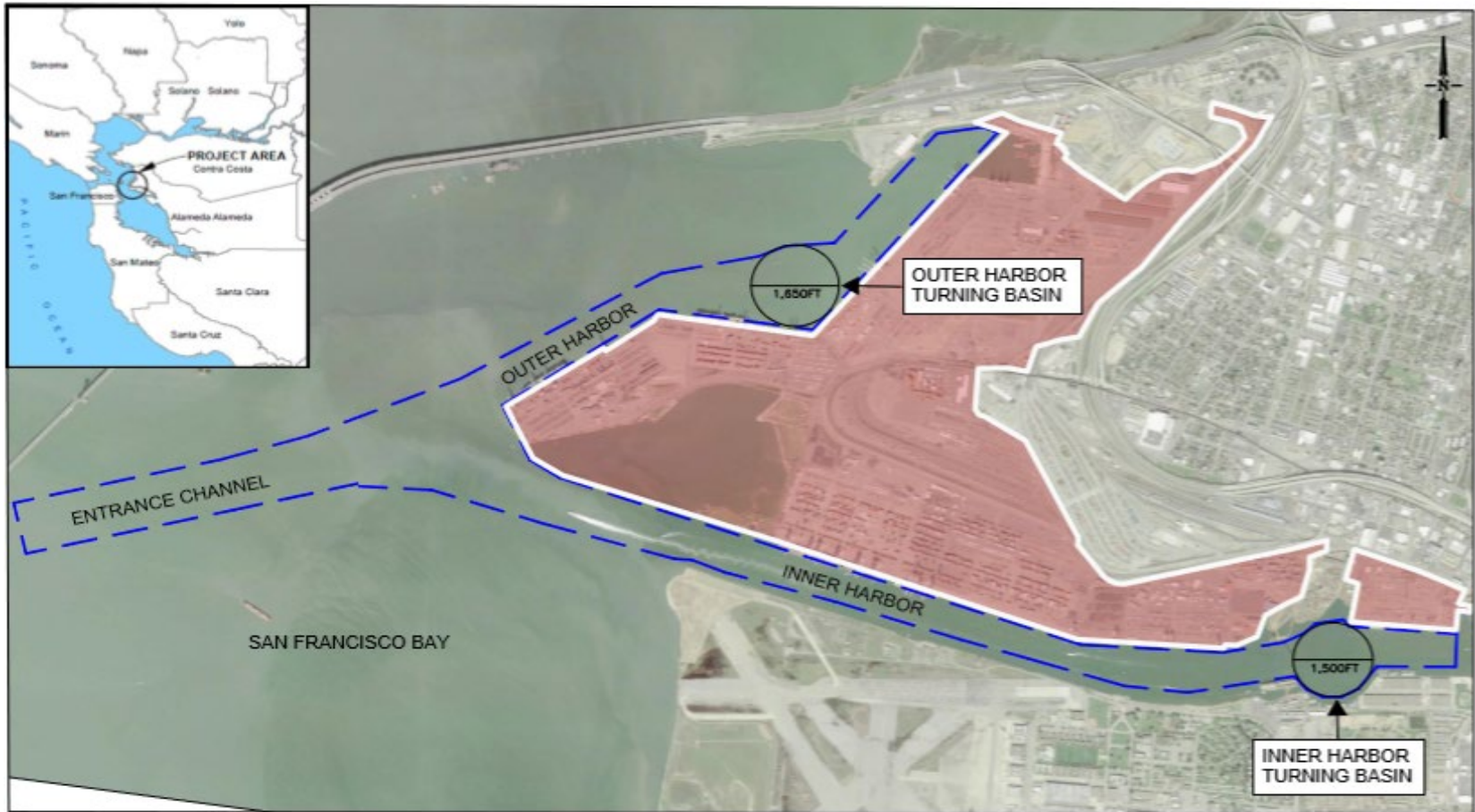


Ongoing Key Events & Improvements



Center Point Landing – 466k sq ft facility completed FEB 2021

Ongoing Key Events & Improvements



Inner Harbor Turning Basin Expansion To Be Completed By 2029

Ongoing Key Events & Improvements



7th Street Grade Separation – Full Funding Secured & Approved

Future 7th Street Grade Undercrossing



- \$328m funded by local tax and state grants
- Includes improvement to rail bridge, roadway & ped/bike paths

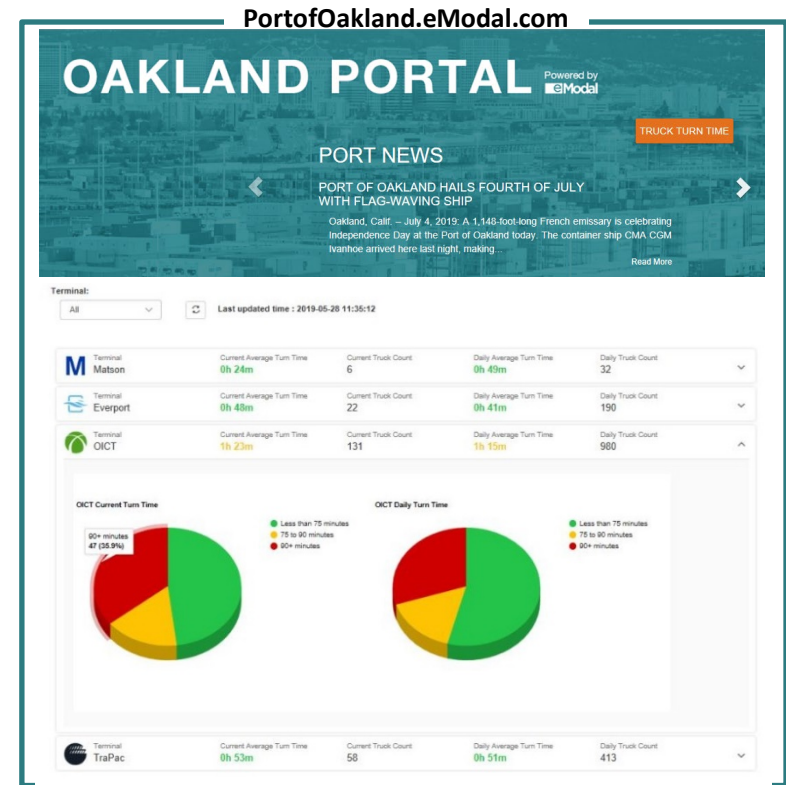
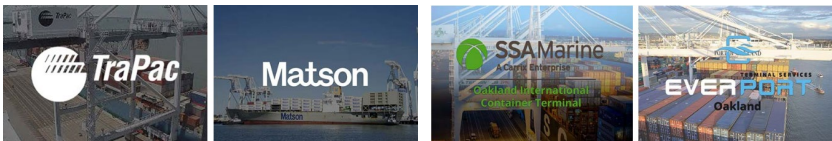
Ongoing Key Events & Improvements

Oakland Portal – powered by eModal

- Single point of entry for terminal updates, camera feeds, vessel schedules, cargo status, maps, dashboard metrics, etc.
- Customer access to eModal system

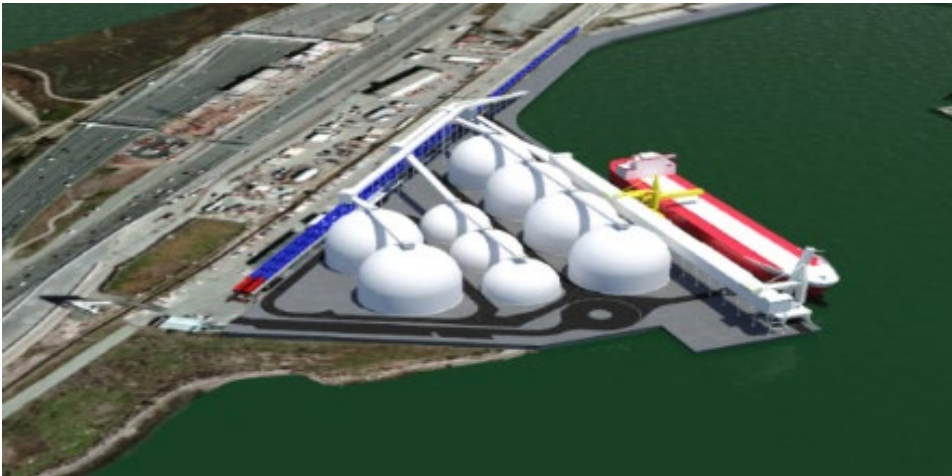
Truck Turn Times

- Truck Turn Times reported based on RFID reads from terminal in/out security gates
- Current/daily turn times and a searchable database for historical information now available
- Truck Queue times (outside terminal) anticipated in next 18 to 24 months



Freight Intelligent Transportation System (FITS) Project Underway

Ongoing Key Events and Improvements – Oakland Bulk and Oversized Terminal





**PORT OF OAKLAND
SEAPORT**

Your Port. Your Partner.