



Nevada Passenger Rail Strategic Plan

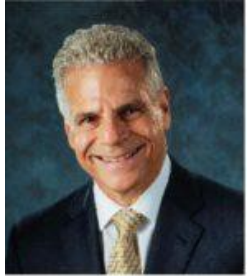
February 16, 2021



Introduction to SRF



For Sustainable Industrial Development



**Michael Sussman,
Chairman/CEO**
msussman@strategicrail.com



**John Elliott,
President/CFO**
jelliott@strategicrail.com

Strategic Rail Finance

1700 Sansom Street, Suite 500
Philadelphia, PA 19103
(215) 564-3122
www.strategicrail.com

Established in 1995 in Philadelphia to advise short line railroads and companies in the North American rail industry.

SRF has completed projects in 46 US states and Canadian provinces and offers diverse services to the industry:

- Railroad business valuations, sales, and acquisitions
- Railroad operational analysis
- Public and private finance
- Capital project planning
- Transportation planning and policy
- Rail business development and site selection

Presently advising on approximately \$1.7B in rail-related projects across North America.

Nevada Rail Passenger Issues and Objectives



Amtrak's Westbound California Zephyr at Reno

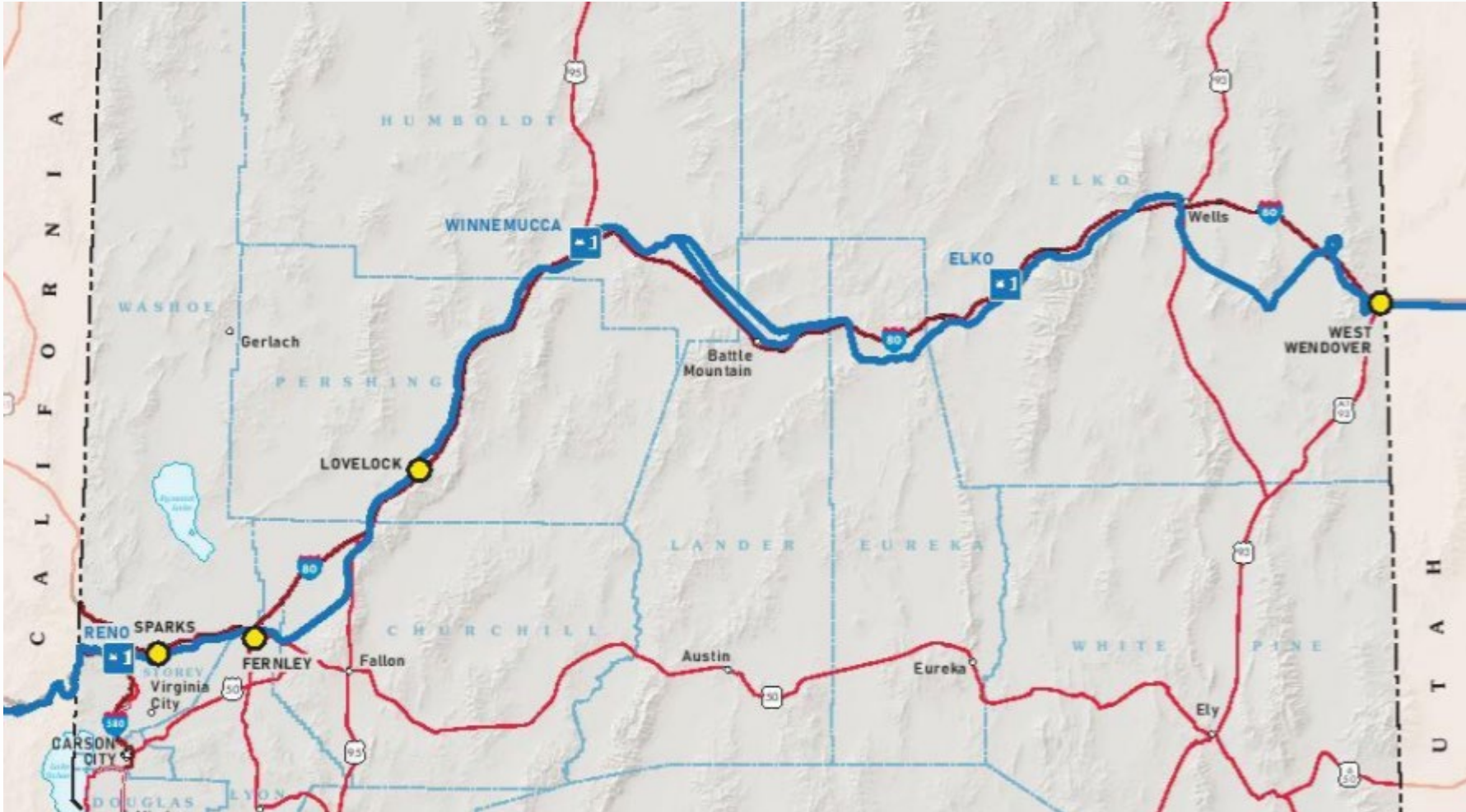
ISSUES:

- Limited Rail Passenger Service and Frequency
- Limited Stations and Routes
- Limited Funding Sources

OBJECTIVES

- Encourage Private Sector Rail Passenger Initiatives: Las Vegas – Southern California
- Focus on Use of Existing Railroad Infrastructure as a Base for New Passenger Transit Development: Intercity, Excursion, Commuter

INTERCITY: Proposed Amtrak Station Stops



Proposed Amtrak California Zephyr Station Stops:

- Sparks
- Fernley
- Lovelock
- West Wendover

INTERCITY: Amtrak California Zephyr



*Lounge Car on Amtrak's California Zephyr Crossing Nevada
East of Reno*

OTHER PROPOSED IMPROVEMENTS:

- **Resume Daily Service**
- **Add Second Daily Train on the route**
- **Improve Elko Station Facilities**
- **Add Sleeping Cars to the California Zephyr**
- **Replace 40+ year-old Superliner Cars**

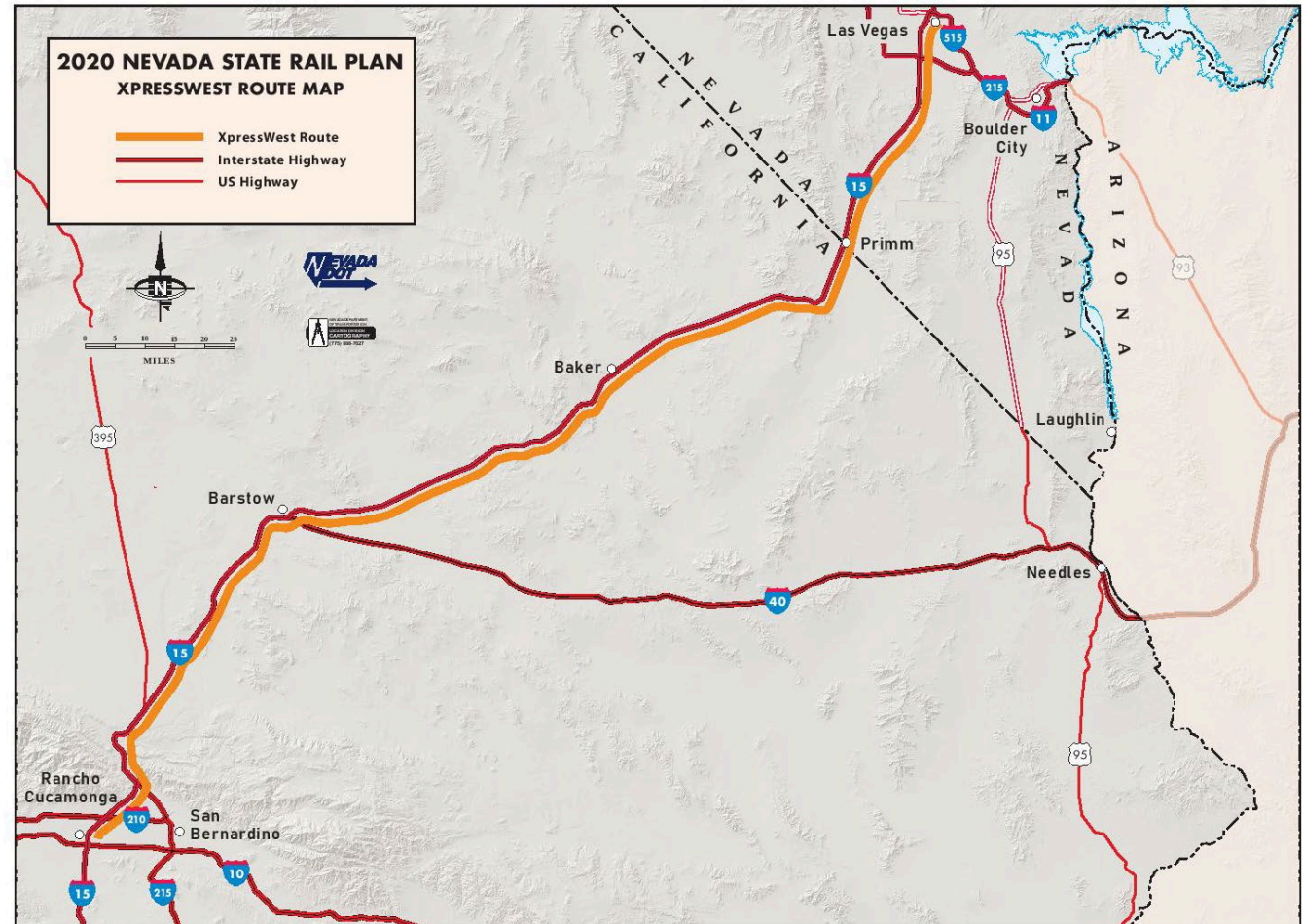
INTERCITY: Extend Amtrak Capitol Corridor



- **Extend Service to Reno/Sparks**
- **Alternative to I-80 congestion and weather issues**
- **Improves Connections between Northern California cities and Reno Metro area**

INTERCITY: Brightline West High Speed Rail

- Las Vegas to S. California
- Privately Financed using I-15
- Zero-emission, electrically powered trains
- HSR at 200 MPH
- Construction due to start in 2021
- Las Vegas Terminal: W. Warm Springs Rd & S. Las Vegas Blvd.



INTERCITY: “C” Route Las Vegas - Reno



- Connects Las Vegas – Reno with EXISTING railroad lines
- Operates via populated areas of Central California
- Section of train connects Las Vegas – San Jose – San Francisco
- Provides alternative to air/cars to connect Central California with Reno and Las Vegas
- Two roundtrips initially
- Benefits California and Nevada residents/tourists
- Future service can utilize high speed rail segments on Brightline West and the California High Speed Rail Line
- Las Vegas – Reno in 12 – 14 hours will be an alternative for those who do not like to drive
- Even with air service more than half of the tourists choose to drive from Bay Area/Central California to Reno and Las Vegas

INTERCITY: Restore Amtrak's Desert Wind

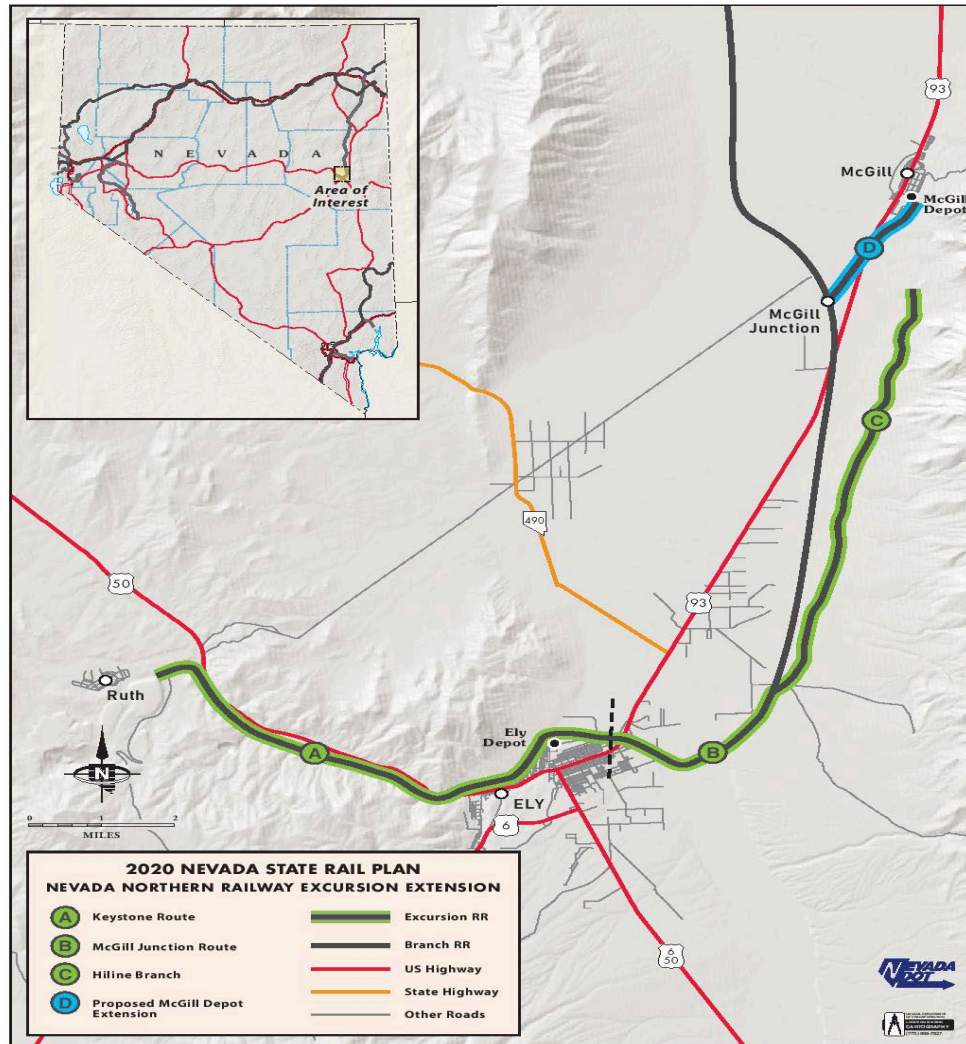


EXCURSIONS: Nevada Tourist Railroads



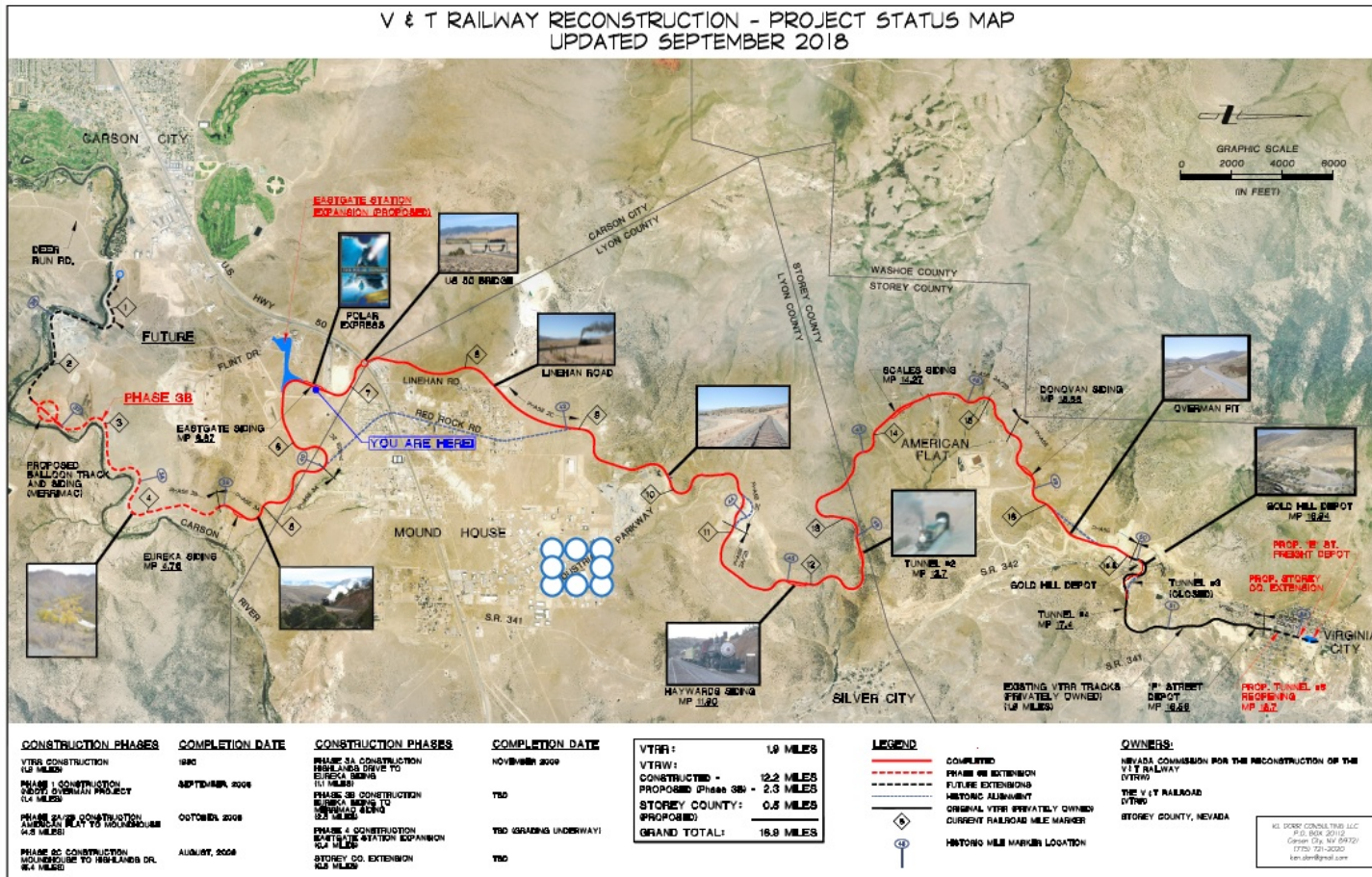
Nevada Northern Railway at Ely

EXCURSIONS: Nevada Northern Railway



McGill Depot Extension

EXCURSIONS: V&T Railway Commission



- Carson River Canyon Extension
- Virginia City Grade Crossing Improvements

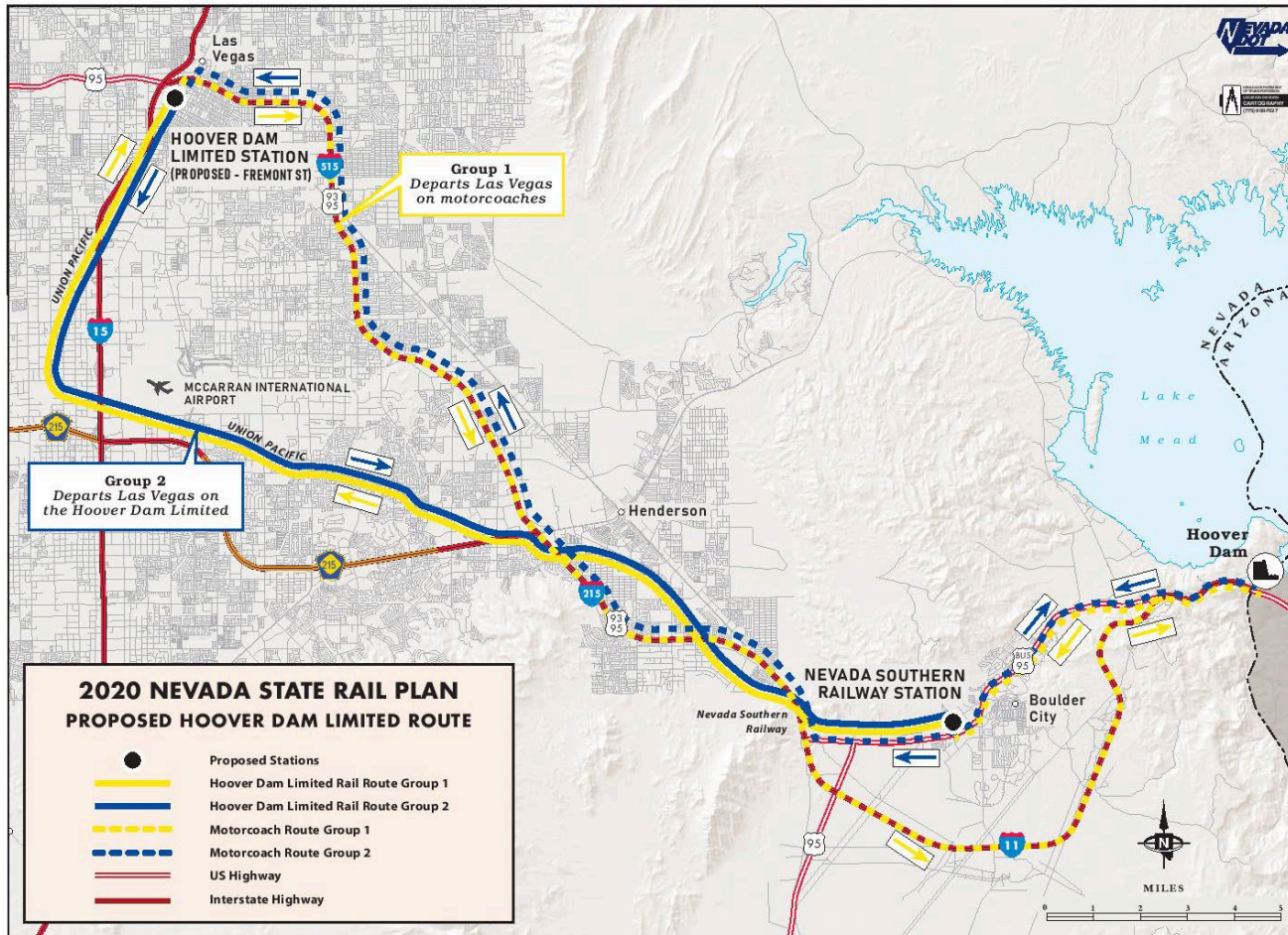
Figure 3-9: V&T Railroad Extension

EXCURSIONS: *The Hoover Dam Limited*



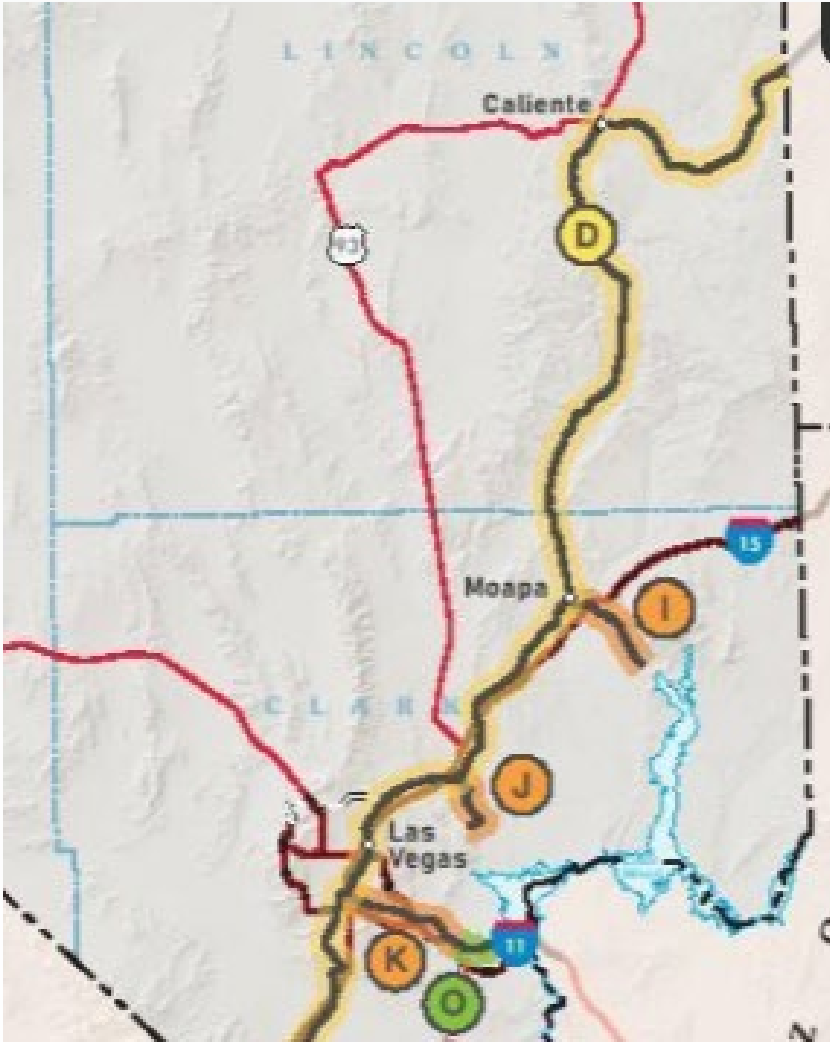
Boulder City Station Stop for The Hoover Dam Limited

EXCURSIONS: *The Hoover Dam Limited*



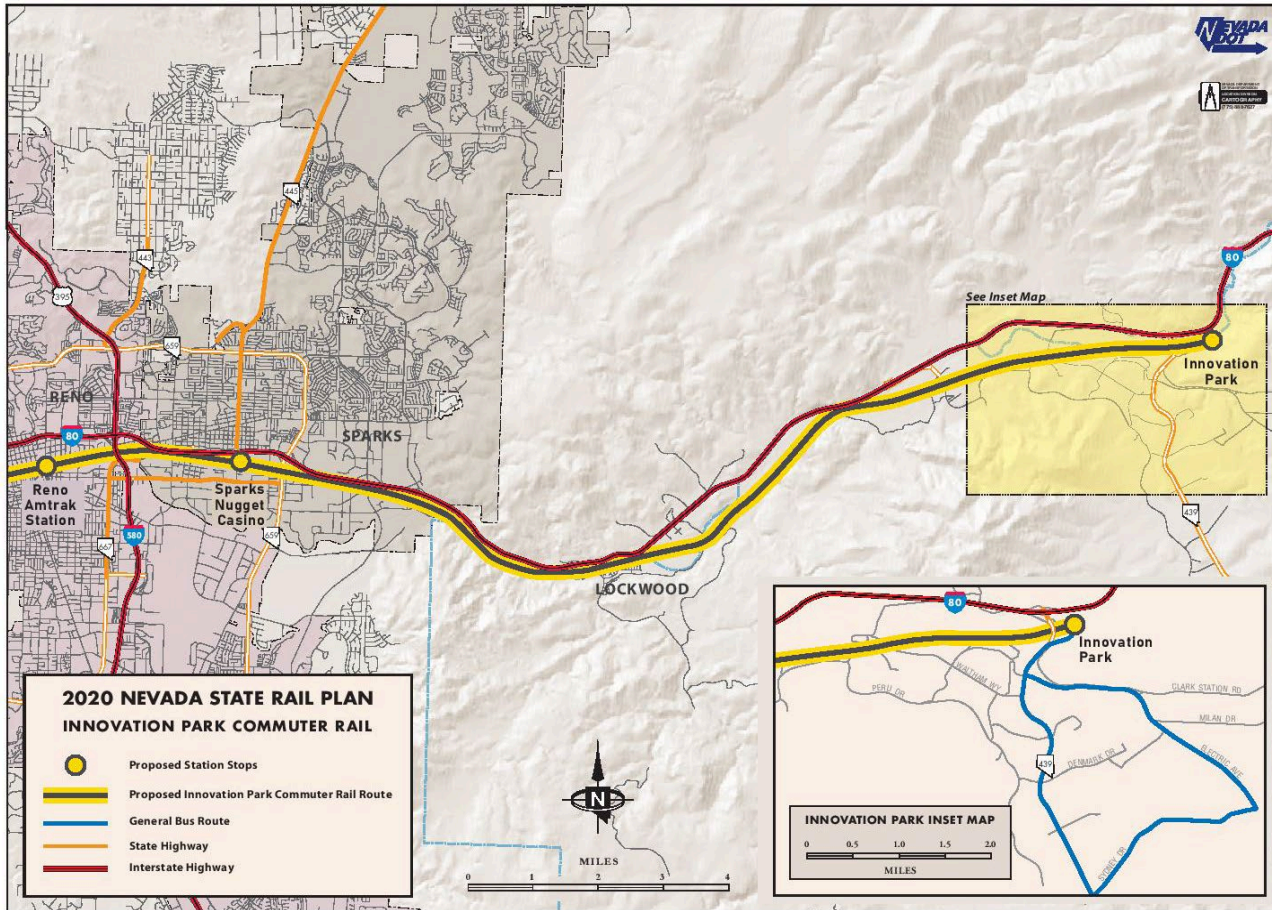
- Car Free Access for Las Vegas tourists to the Hoover Dam
- Operates via Union Pacific and Nevada Southern Railway
- Historic rail line was used to build the Hoover Dam
- Motorcoach/Train Combo
- Serves up to 600 passengers daily

EXCURSIONS: Las Vegas - Caliente



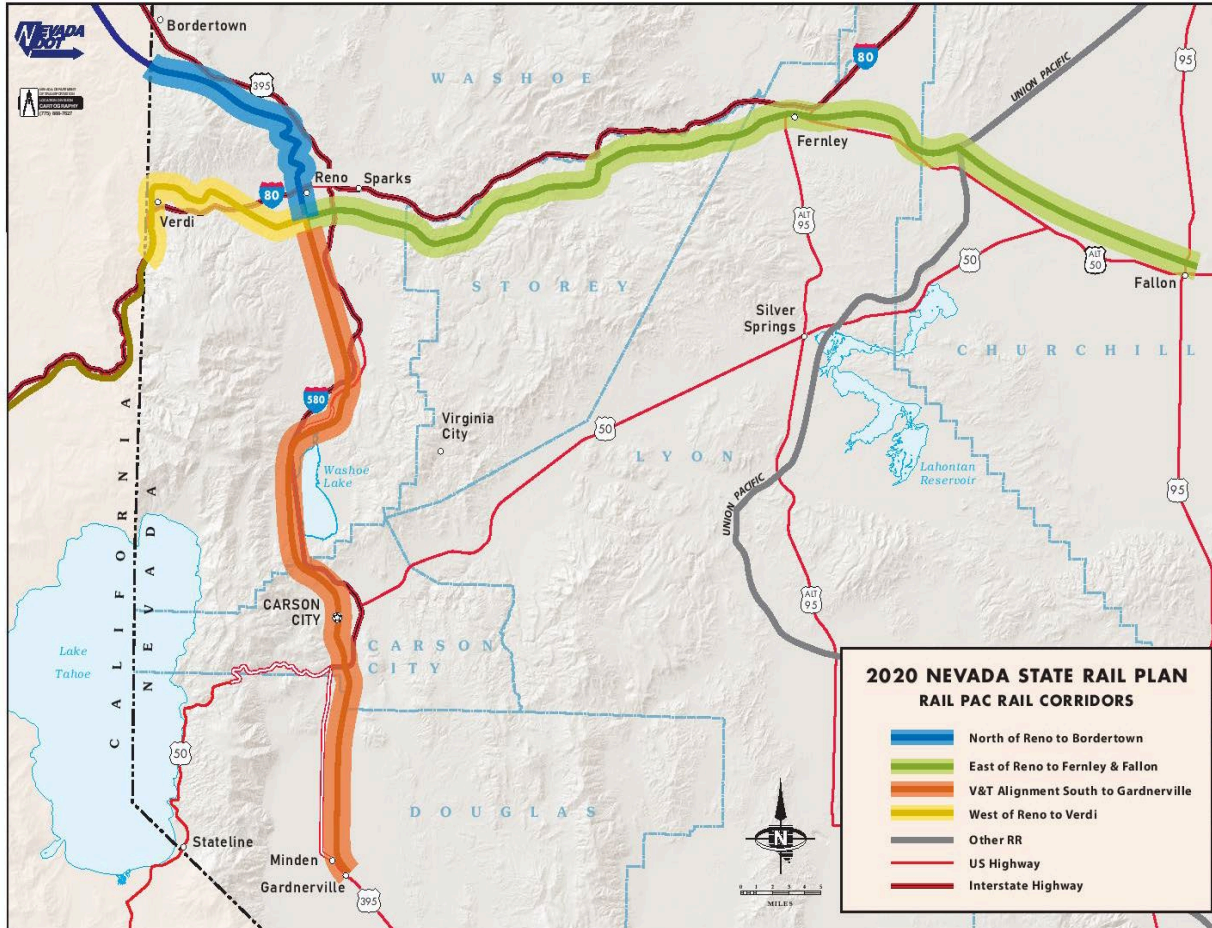
- **Car Free Access for Las Vegas tourists and residents to visit Caliente Attractions**
- **Operates via Union Pacific in 2 hours, 30 minutes (126 miles)**
- **Faster than 3+ hours drive via Nevada 93 (151 miles)**

COMMUTER: Reno – Innovation Park



- Serves Reno/Sparks
- Service for up to 25,000 employees in the future
- Operates via Union Pacific
- Bypasses I-80 congestion
- Trains would operate hourly
- Shuttle vans to plants

Commuter: Reno Area Transit Service



- Proposed by RailPAC
 1. V&T Grade to Carson City and Gardnerville
 2. Reno Branch to Bordertown (UP)
 3. East to Fallon (Union Pacific)
 4. West to Verdi (Union Pacific)

COMMUTER: Las Vegas – Primm Regional Rail



- Share Brightline West Tracks
- Build 5 New Park & Ride Stations
- Serves Proposed Ivanpah Valley Airport
- Zero-emission Transportation
- Speeds up to 125 MPH

COMMUTER: Las Vegas Monorail Extension



Las Vegas Monorail: Nevada's Only Zero Emission, Electrically Powered Mass Transit

COMMUTER: Las Vegas Monorail Extension



- Five Mile Extension to Brightline West Terminal
- 4 New Stations:
 - Luxor/Mandalay
 - Allegiant Stadium
 - McCarran Airport Car Rental
 - Brightline West Terminal
- Car-free access for Las Vegas tourists by rail and air
- Zero-emission, Electric Powered Transportation
- Opportunity to eliminate traffic to reduce greenhouse gases in support of Governor Sisolak's executive order for meeting climate change goals

FREEDOM of MOBILITY for Nevada



Southbound Onboard the Las Vegas Monorail