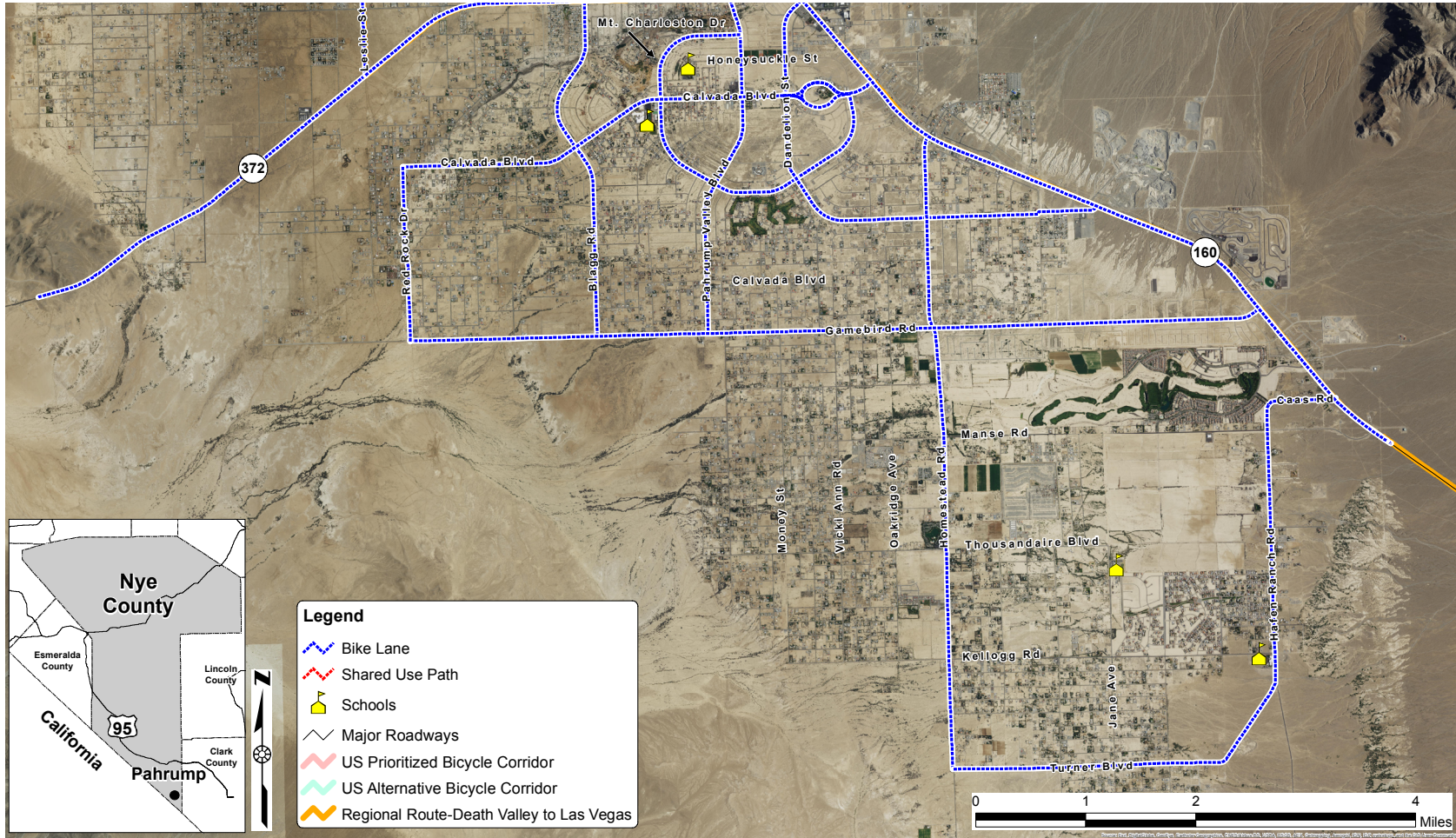




NYE COUNTY Bicycle Plan



NYE COUNTY PAHRUMP

Bicycles are to be accommodated on all roadways in Nye County. At a minimum, a paved shoulder with a minimum usable width of four feet should be included on all future roadway improvements with a speed limit over 25 miles per hour. Opportunities for additional bicycle facilities that are not identified in this bicycle plan may develop and should be pursued.

Figure 16 – Bicycle Network – Pahrump (South)