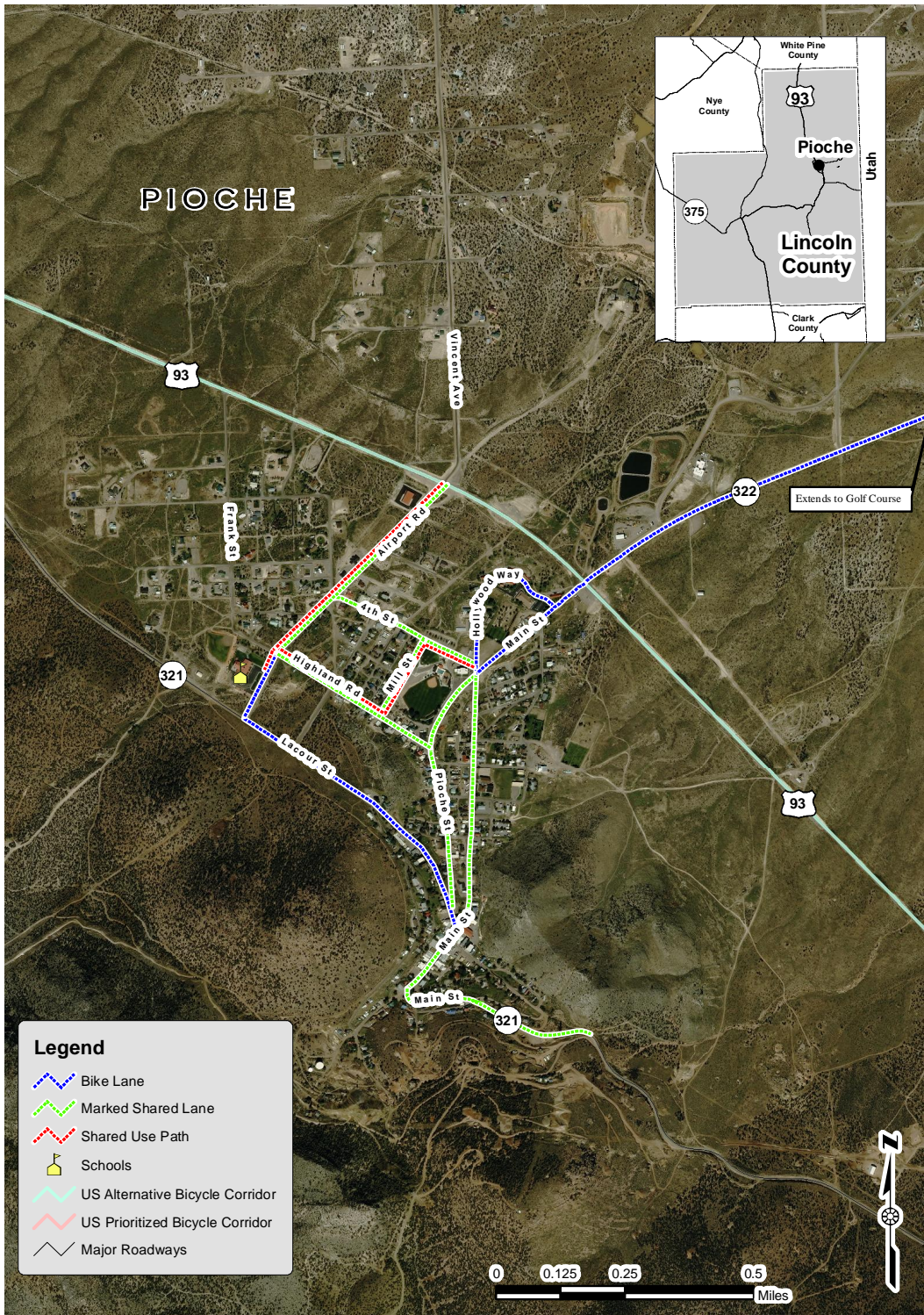


Lincoln County

Bicycles are to be accommodated on all roadways in Lincoln County. At a minimum, a paved shoulder with a minimum usable width of four feet should be included on all future roadway improvements with a speed limit over 25 miles per hour. Opportunities for additional bicycle facilities that are not identified in this bicycle plan may develop and should be pursued.

Figure 10 – Bicycle Network – Lincoln County



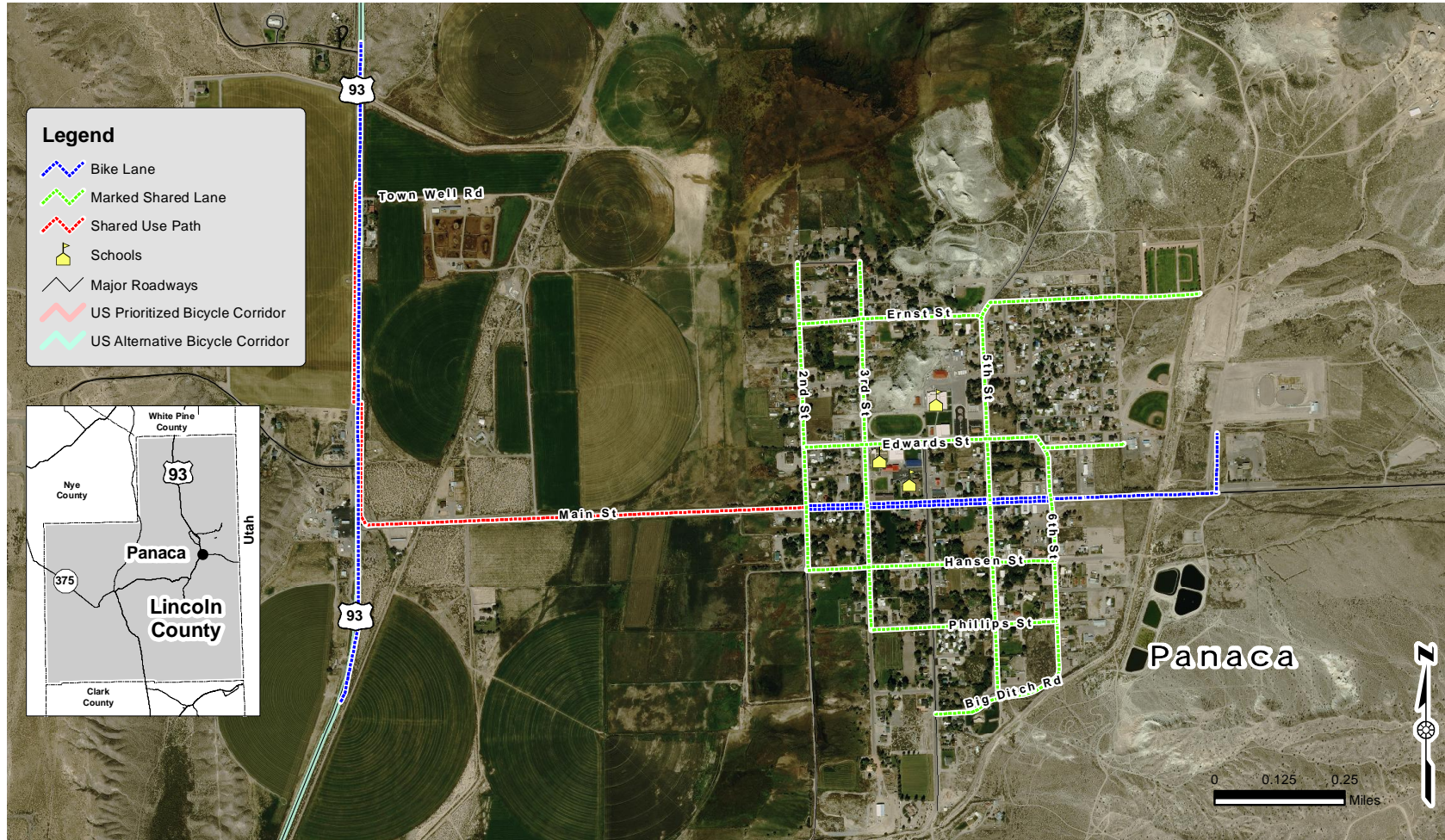
Lincoln County
Pioche

Bicycles are to be accommodated on all roadways in Lincoln County. At a minimum, a paved shoulder with a minimum usable width of four feet should be included on all future roadway improvements with a speed limit over 25 miles per hour. Opportunities for additional bicycle facilities that are not identified in this bicycle plan may develop and should be pursued.

Figure 11 – Bicycle Network – Pioche



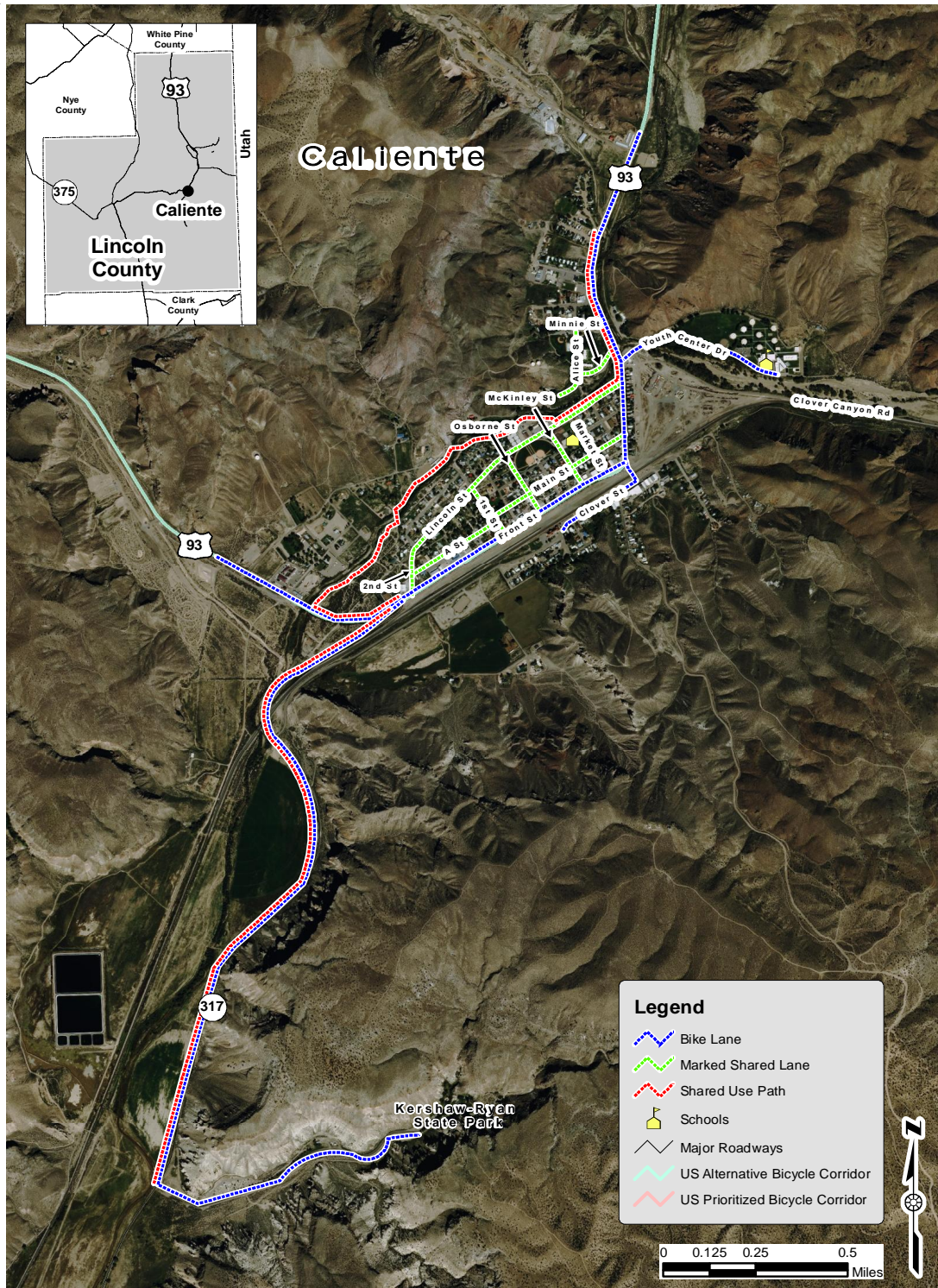
LINCOLN COUNTY Bicycle Plan



LINCOLN COUNTY Panaca

Bicycles are to be accommodated on all roadways in Lincoln County. At a minimum, a paved shoulder with a minimum usable width of four feet should be included on all future roadway improvements with a speed limit over 25 miles per hour. Opportunities for additional bicycle facilities that are not identified in this bicycle plan may develop and should be pursued.

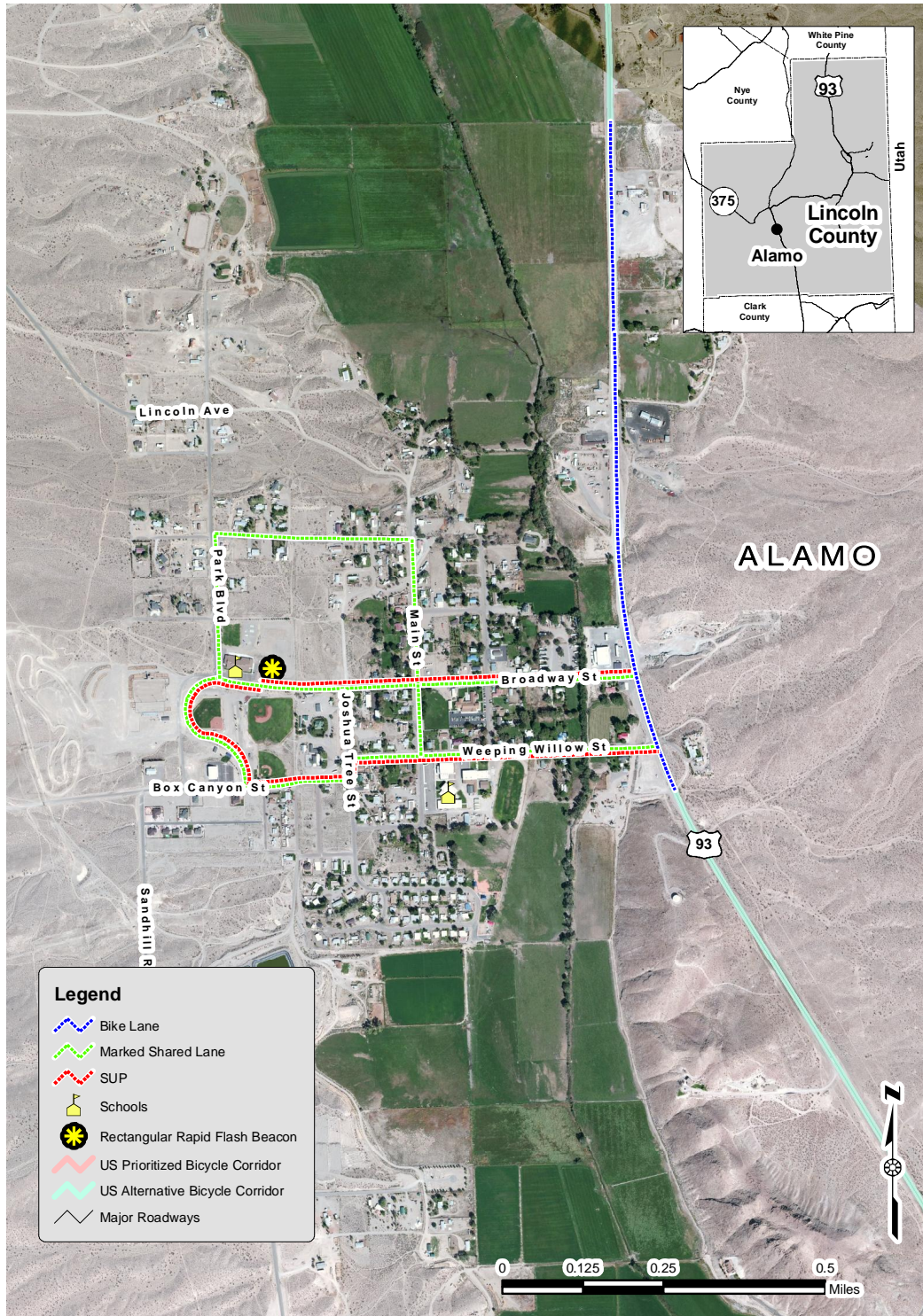
Figure 12 – Bicycle Network – Panaca



Lincoln County Caliente

Bicycles are to be accommodated on all roadways in Lincoln County. At a minimum, a paved shoulder with a minimum usable width of four feet should be included on all future roadway improvements with a speed limit over 25 miles per hour. Opportunities for additional bicycle facilities that are not identified in this bicycle plan may develop and should be pursued.

Figure 13 – Bicycle Network – Caliente



Lincoln County Alamo

Bicycles are to be accommodated on all roadways in Lincoln County. At a minimum, a paved shoulder with a minimum usable width of four feet should be included on all future roadway improvements with a speed limit over 25 miles per hour. Opportunities for additional bicycle facilities that are not identified in this bicycle plan may develop and should be pursued.

Figure 14 – Bicycle Network – Alamo