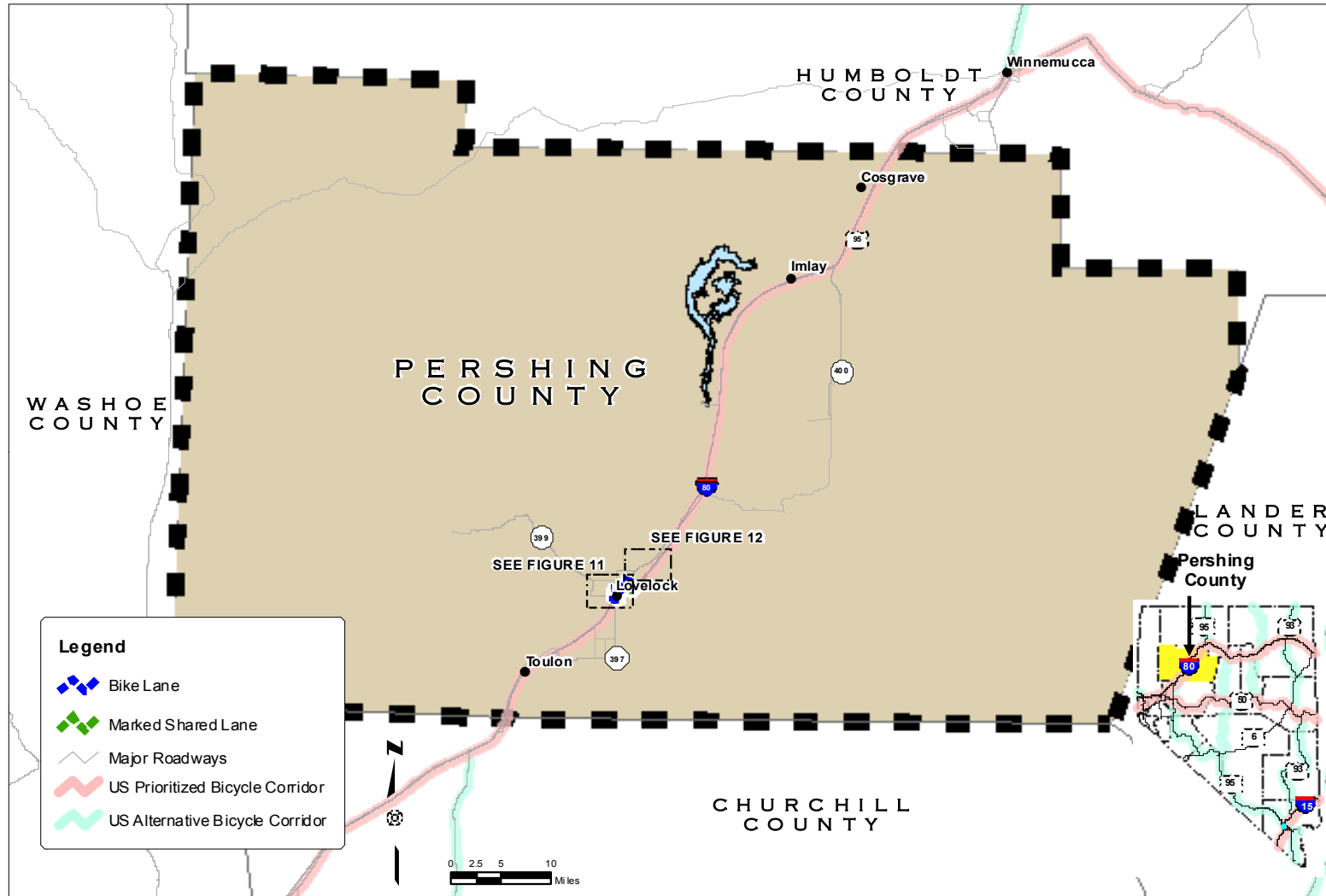




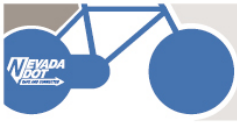
PERSHING COUNTY Bicycle Plan



PERSHING COUNTY

Bicycles are to be accommodated on all roadways in Pershing County. At a minimum, a paved shoulder with a minimum usable width of four feet should be included on all future roadway improvements with a speed limit over 25 miles per hour. Opportunities for additional bicycle facilities that are not identified in this bicycle plan may develop and should be pursued.

Figure 10 – Bicycle Network – Pershing County



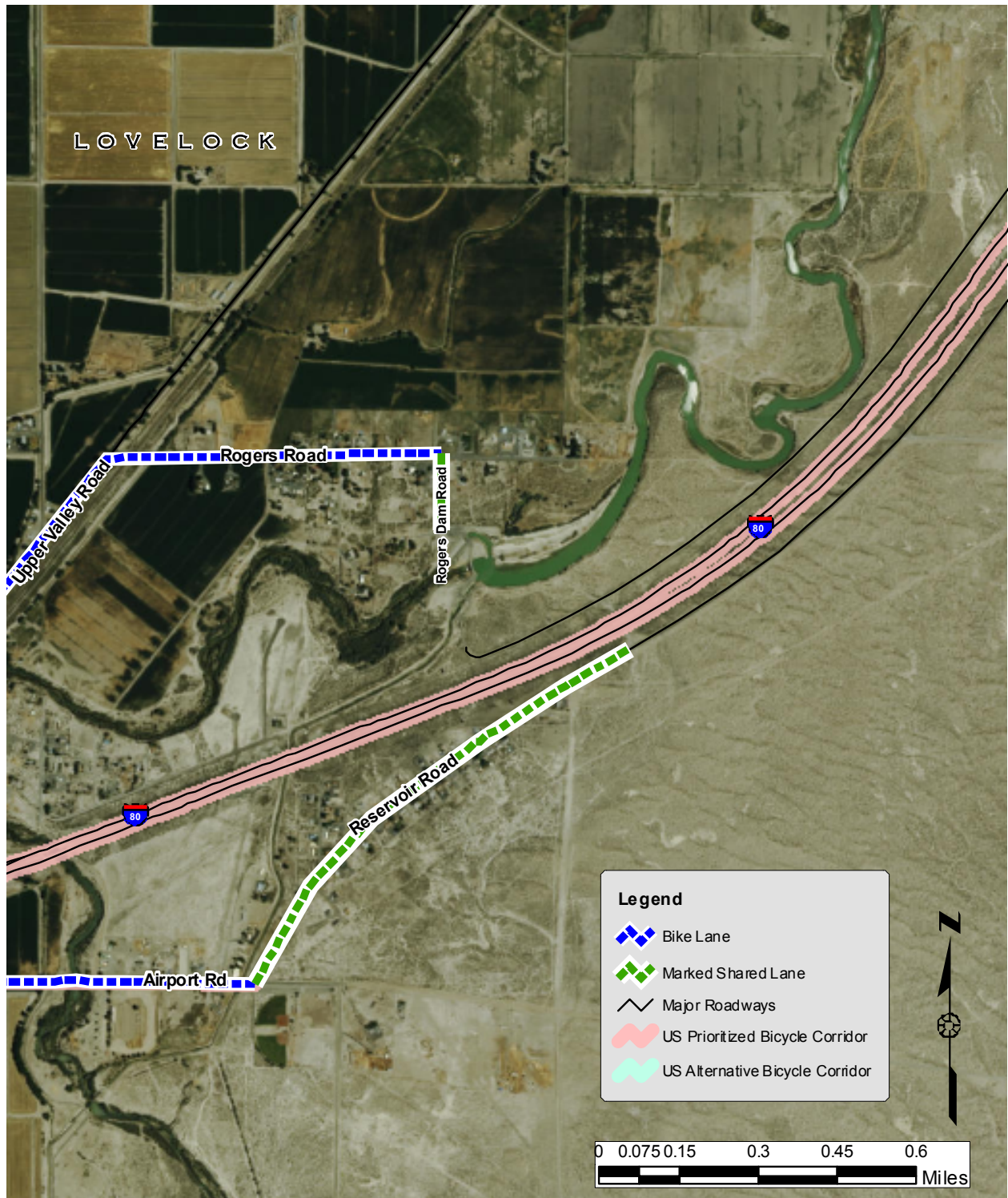
PERSHING COUNTY Bicycle Plan



PERSHING COUNTY LOVELOCK

Bicycles are to be accommodated on all roadways in Pershing County. At a minimum, a paved shoulder with a minimum usable width of four feet should be included on all future roadway improvements with a speed limit over 25 miles per hour. Opportunities for additional bicycle facilities that are not identified in this bicycle plan may develop and should be pursued.

Figure 11 – Bicycle Network – Lovelock



PERSHING COUNTY
LOVELOCK
NORTHEAST

Bicycles are to be accommodated on all roadways in Pershing County. At a minimum, a paved shoulder with a minimum usable width of four feet should be included on all future roadway improvements with a speed limit over 25 miles per hour. Opportunities for additional bicycle facilities that are not identified in this bicycle plan may develop and should be pursued.

Figure 12 – Bicycle Network – Lovelock (Northeast)