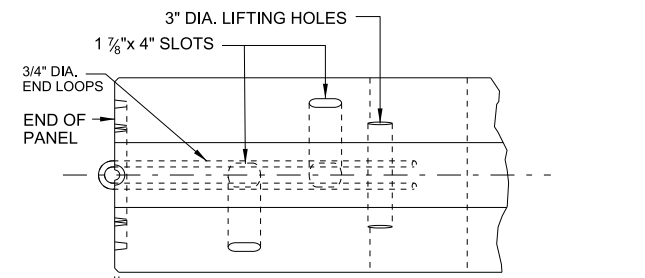


ELEVATION TYPICAL PANEL
WEIGHT PER PANEL : 2.5 TONS



PLAN

1/2" TYP. FRONT AND BACK EACH END

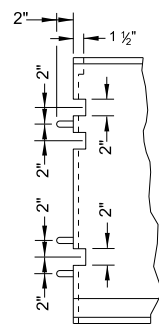


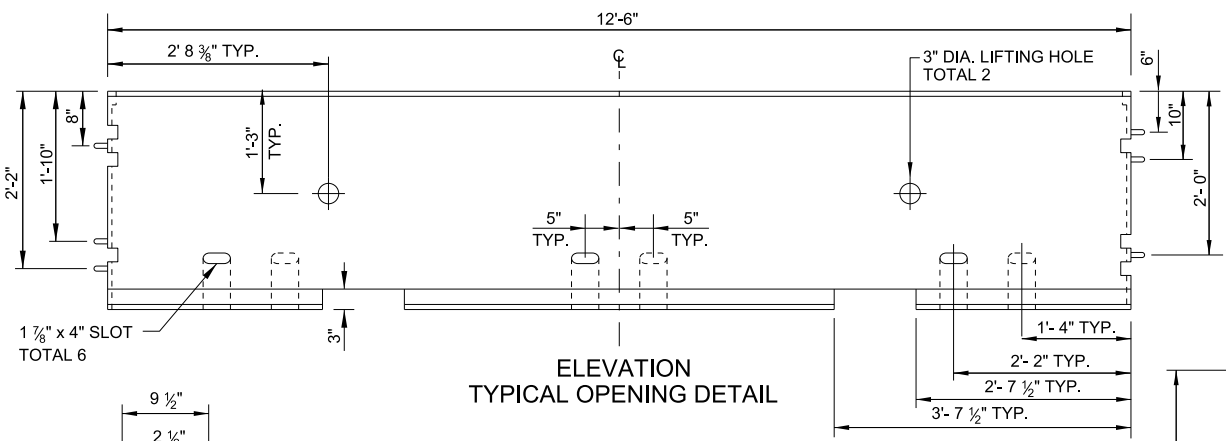
PLATE WASHER, DIA. 2" OD x 1/4" THICK WITH DIA. 1 1/16" HOLE AT CENTER ASTM A572 GRADE 50

CONNECTING PIN
GALVANIZE AFTER ALL FABRICATION IS COMPLETE

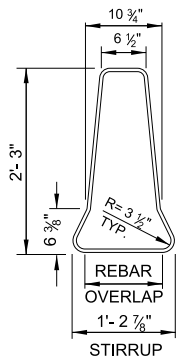
DIA. 1" ASTM A449

NOTES:

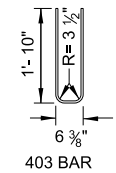
1. For layout and crash cushions, where needed, see project plans or special provisions.
2. Chamfer top, bottom and both ends.
3. Maintain a clearance of 5'-6" minimum between the Type CT Temporary Railing and work area.
4. Where Type CT Temporary Railing is placed as a temporary or longitudinal barrier in two-way traffic or highways, maintain a clearance of 5'-6" minimum between the edge of travel way and the barrier



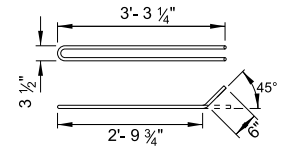
ELEVATION TYPICAL OPENING DETAIL



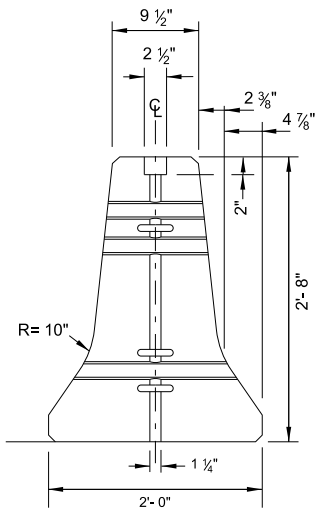
REINFORCEMENT DETAILS



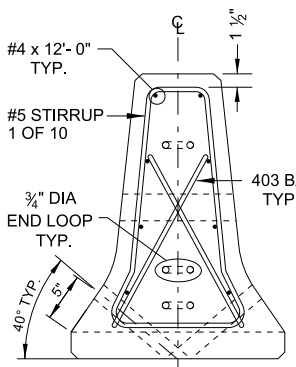
403 BAR



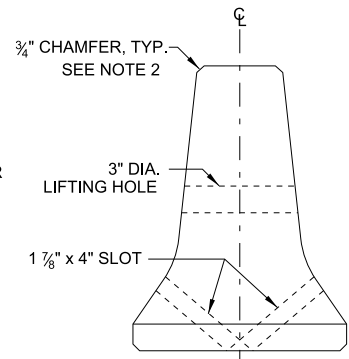
END LOOP DETAIL



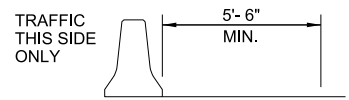
SECTION A-A



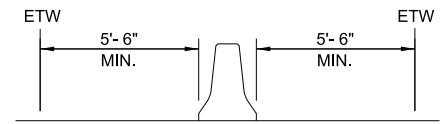
SECTION B-B



SECTION C-C



RAILING PLACEMENT ADJACENT TO WORK AREA
SEE NOTE 3



RAILING PLACEMENT FOR TWO WAY TRAFFIC
SEE NOTE 4

66LHS