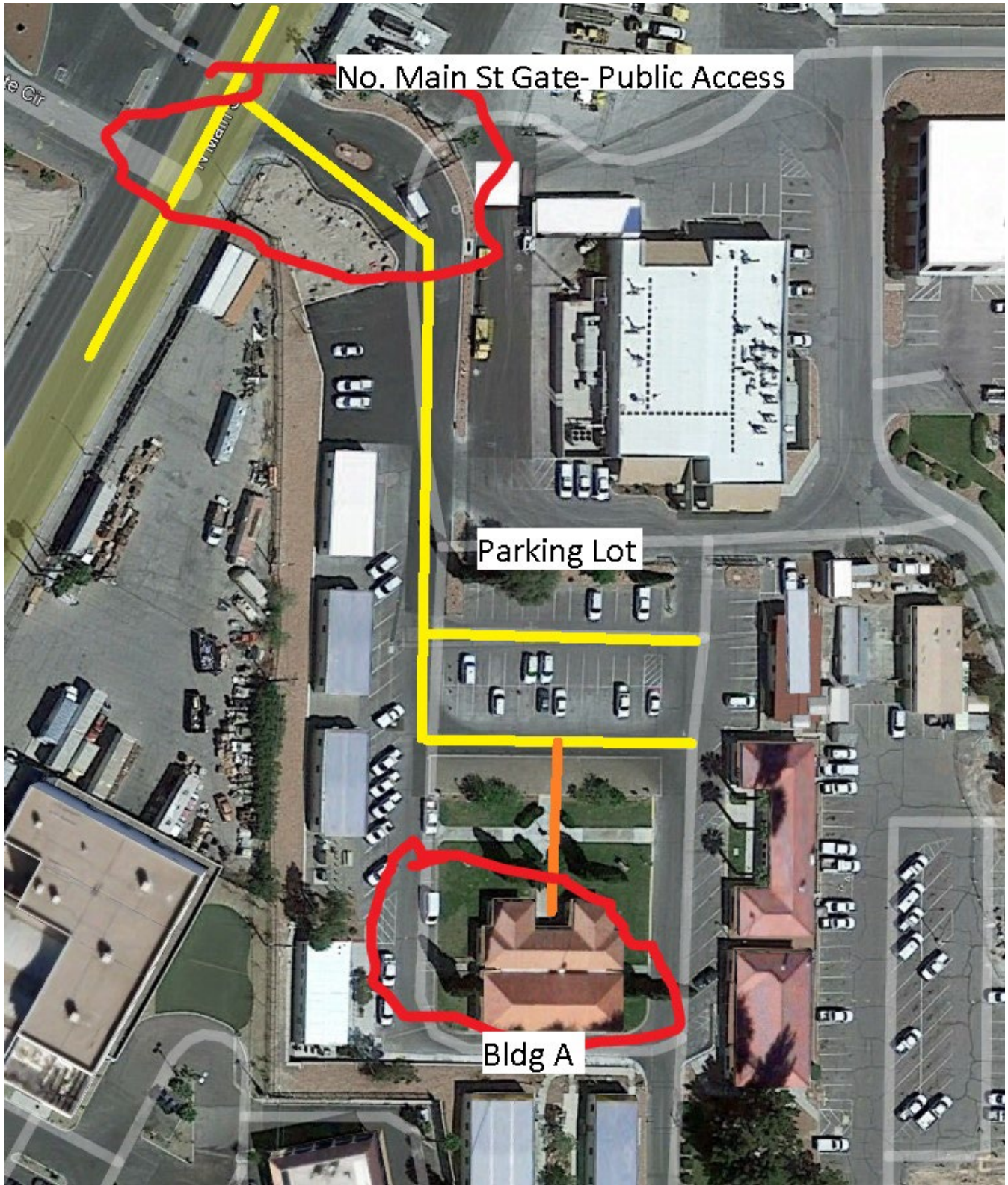


STATE OF NEVADA
DEPARTMENT OF TRANSPORTATION



Entering the Nevada Department of Transportation compound can be done by driving north on Main Street, from East Washington Avenue, for 0.16 miles; or 0.38 miles south from Owen's Avenue.; turn east into maintenance yard gate, and follow roadway (yellow lines) to a large parking area on the left. Park in that parking lot. Walk down the sidewalk (Orange Line) to the north entrance to Bldg A. Please check in with the front desk, and someone will guide you to the room where the auction will

take place.

