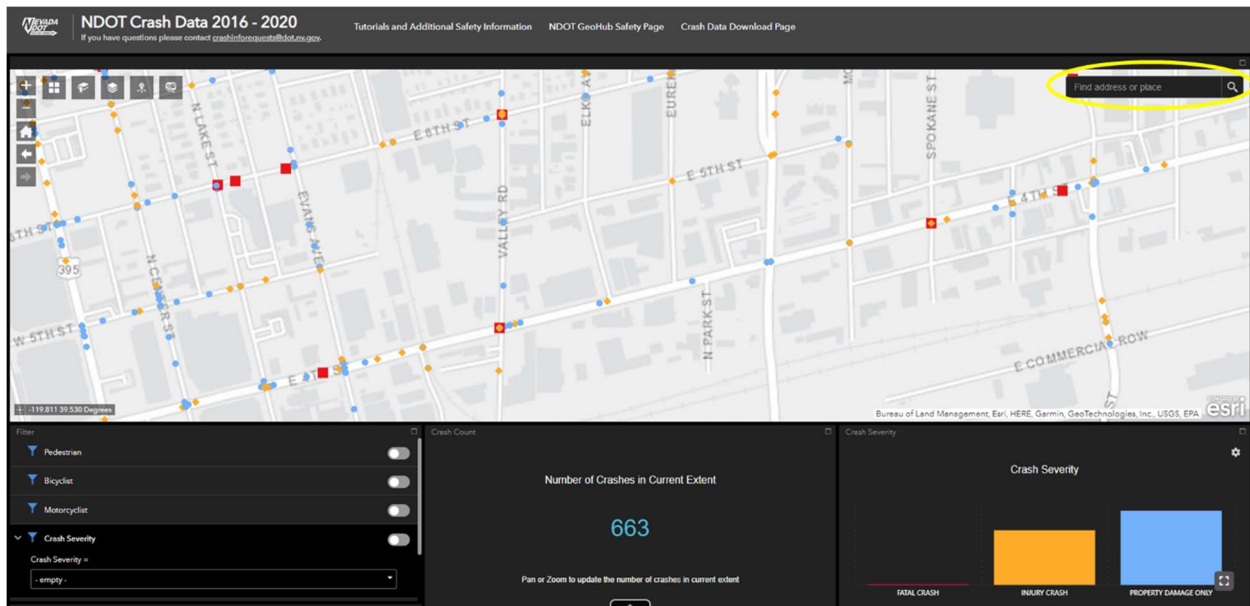
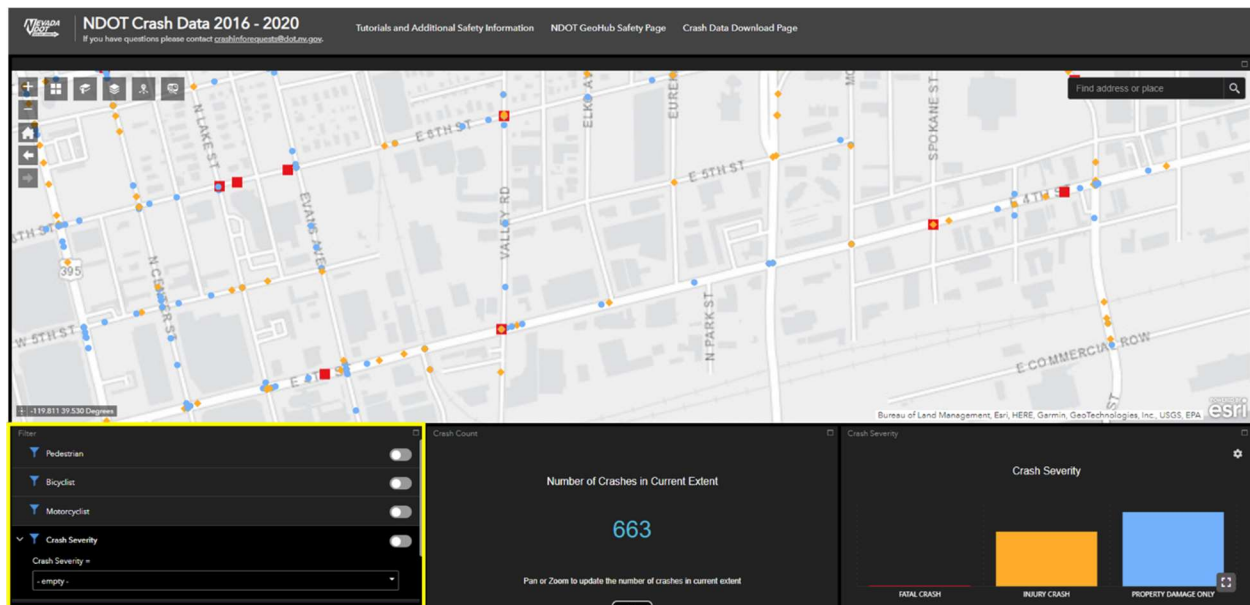


## Navigating the map & using tools:

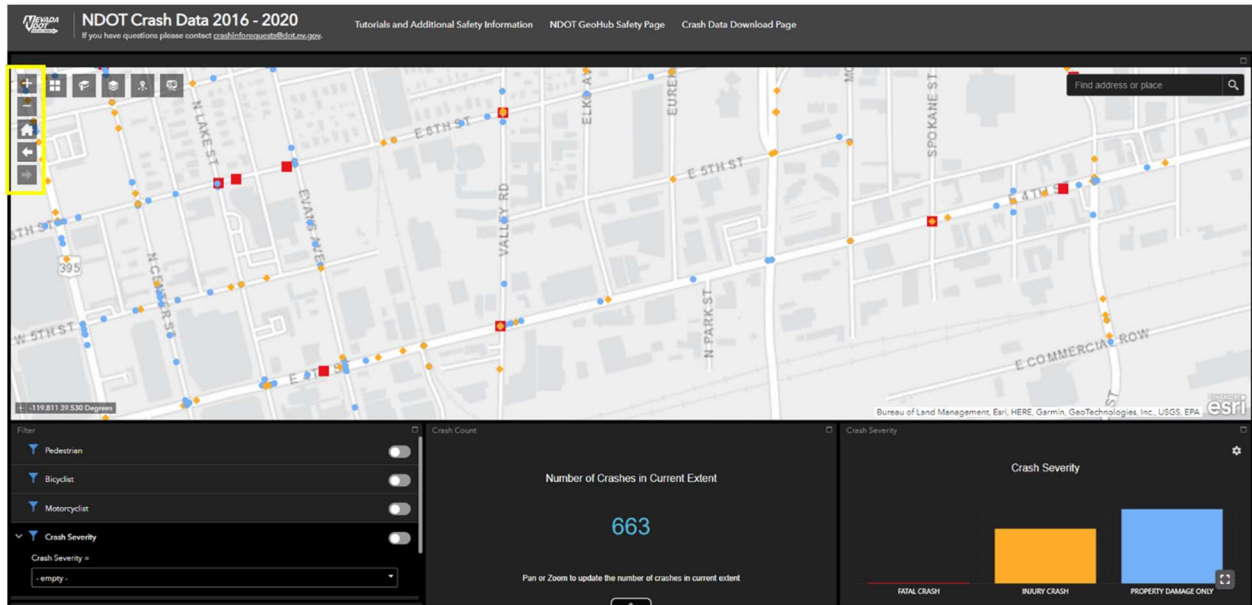
1. The 'Find address or place' search bar in the top-right can be used to navigate to areas such as cities or intersections. To navigate to an intersection, it may be necessary to input the city and state along with the street names, e.g., '4th St & Valley Rd, Reno, NV'.



2. The filters in the bottom-left can be used to quickly find crashes that are pedestrian, bicyclist, motorcycle, or animal related. It can also be used to filter crash based on the crash severity. These filters can also be combined, for example, the 'Pedestrian' and 'Crash Severity' filters can be used to quickly find fatal pedestrian-related crashes.



- The highlighted buttons in the top-left can be used to zoom in, zoom out, return to the home extent, return to the previous extent, or go to the next extent. The mouse wheel may also be used to zoom in and out.



- The highlighted buttons in the top-left can be used to change the base map, add bookmarks, edit layers, and use screening tools. The screening tools has an option to upload your own shapefile, which may be useful to pull data by MPO or other boundary layers.

