



U.S. Department
of Transportation
**Federal Highway
Administration**

Nevada Division

September 7, 2023

705 N. Plaza Street, Suite 220
Carson City, NV 89701
(775) 687-1204
<https://www.fhwa.dot.gov/nvdiv>

In Reply Refer To:
HDA-NV

Ms. Sondra Rosenberg, PTP
Assistant Director, Planning
Nevada Department of Transportation
1263 South Stewart Street
Carson City, Nevada 89712

Dear Ms. Sondra Rosenberg:

SUBJECT: Acceptance of Critical Urban and Rural Freight Corridors

The Federal Highway Administration (FHWA) Nevada Division Office has reviewed the Nevada Department of Transportation (NDOT) letter dated July 27, 2023, certifying the designation of Critical Urban Freight Corridors (CUFC) and Critical Rural Freight Corridors (CRFC) in the State of Nevada, as required by 23 United States Code (U.S.C.) 167 (g). NDOT has worked closely with the Division Office to determine appropriate allocation of critical freight miles associated with this effort.

As required by 23 U.S.C. 167 (g) and other relevant Federal regulations, NDOT also provided a table identifying the crucial freight corridors in accordance with the current FHWA guidance on designation and certification requirements.

With these submittals, NDOT certifies that the:

- Public road miles listed meet the requirements of 23 U.S.C. 167 (e) and (f);
- Length of centerline mileage is accurate and does not exceed the maximum mileage allotted to the State of Nevada for CRFCs and CUFCs;
- Mileage was selected in coordination with appropriate stakeholder groups; and
- Freight corridors selected will be incorporated into the next State Freight Plan update and before FHWA authorizes the use of the National Highway Freight Program (NHFP) funds in accordance with 23 U.S.C. 167 (h).

In accordance with FHWA guidance, the FHWA Nevada Division has reviewed and verified your certification and forwarded your findings to FHWA Office of Freight Management and Operations. The ultimate responsibility for the accuracy and timely reporting for the CRFC and CUFC designations in Nevada will remain with NDOT. The CRFC and CUFC designations will need to be incorporated into the State's next annual Highway Performance Monitoring System (HPMS) submission.

By verifying that the certification is accurate, National Highway Freight Plan (NHFP) funds can be authorized for these miles in accordance with 23 U.S.C. 167 (h).

If you have any questions regarding NHFP eligibility requirements or critical freight corridors, please contact Juan Balbuena, by phone: (775) 687-8582 or by email: Juan.Balbuena@dot.gov

Sincerely,

Rodney Whitfield
Acting Division Administrator
FHWA Nevada Division

Enclosure: Nevada Freight Corridors

TO:

Sondra Rosenberg, PTP, NDOT
SRosenberg@dot.nv.gov

ecc:

Tracy Larkin-Thomason, NDOT
Timothy Mueller, NDOT
Kevin Verre, NDOT
Rodney Whitfield, FHWA
Amy Inglis, FHWA
Jacob Waclaw, FHWA
Juan Balbuena, FHWA

TLarkin@dot.nv.gov
TMueller@dot.nv.gov
KVerre@dot.nv.gov
Rodney.Whitfield@dot.gov
Amy.Inglis@dot.gov
Jacob.Waclaw@dot.gov
Juan.Balbuena@dot.gov



JOE LOMBARDO
Governor

STATE OF NEVADA
DEPARTMENT OF TRANSPORTATION

1263 S. Stewart Street
Carson City, Nevada 89712

TRACY LARKIN THOMASON, P.E.
Director

July 27, 2023

U.S. Department of Transportation
Federal Highway Administration, Nevada Division
Attn. Rodney Whitfield, "Acting" Division Administrator
705 N. Plaza Street, Suite 220
Carson City, NV 89701

Dear Mr. Whitfield,

STATEMENT: As required by 23 U.S.C. 167(g), and other pertinent Federal regulations, the following tables identifies critical freight corridors in accordance with the current FHWA guidance covering the designation and certification requirements.

CRITICAL RURAL FREIGHT CORRIDOR CERTIFICATE

I hereby certify that the public roads listed in the table below meet the requirements of 23 U.S.C. 167(e) as designated CRFC routes and connectors.

I further certify that the length in centerline mileage is accurate and does not exceed the maximum mileage limit, that the designated freight corridors have been coordinated with the appropriate stakeholder groups, and that the freight corridors have been, or will be incorporated into the State Freight Plan prior to FHWA authorizing the use of Federal funds.

Table 1 - Nevada Designated Critical Rural Freight Corridors (CRFCs)

No.	County/Counties	Corridor	From	To	Mileage	CRFC ID
1	Clark, Nye, Esmeralda	US 95	Kyle Canyon Rd (SR 157)	US 95 PM 42 in Esmeralda County (near Tonopah)	189.7	G
2	Esmeralda, Mineral, Churchill	US 95	US 6 (at Coaldale)	US 50	135.4	G
3	Humboldt	US 95	I-80	SR 140	31.3	D
4	Elko	US 93	I-80	ID/NV border	67.9	G
5	White Pine	US 93	US 50	US 93 Alt	59.5	D
6	Churchill	US 50	US 95 (S. Maine St in Fallon)	US 50 (Leetville Jct.)	9.3	B
7	Lyon, Churchill	US 50A	US 50 (Leetville Jct.)	I-80	20.3	B
8	Lyon	US 50	SR 439 (USA parkway)	SR 341	24.8	B

No.	County/Counties	Corridor	From	To	Mileage	CRFC ID
9	Douglas, Carson City	US 395	US 50/US 395 intersection south of Carson City	CA/NV border	34.3	B
10	Storey, Lyon	SR 439 (USA Parkway)	I-80	US 50	19	B
11	Elko	SR 225 (Elko)	Jennings Way	SR 535	1.6	F
12	Elko	SR 535 (Elko)	SR 225	5th Street	0.8	F
13	Elko	Idaho Street (Elko)	SR 535 and 5th Street	Old Highway 40 E.	6.1	F
Nevada's Total CRFC Mileage:					600 Miles	

CRITICAL URBAN FREIGHT CORRIDOR CERTIFICATE

I hereby certify that the public roads listed in the table below meet the requirements of 23 U.S.C. 167(f) as designated CUFC routes and connectors.

I further certify that the length in centerline mileage is accurate and does not exceed the maximum mileage limit, that the designated freight corridors have been coordinated with the appropriate stakeholder groups, and that the freight corridors have been, or will be incorporated into the State Freight Plan prior to FHWA authorizing the use of Federal funds.

Table 2 - Nevada Designated Critical Urban Freight Corridors (CUFCs)

No.	County	MPO	Corridor	From	To	Mileage	CUFC ID
1	Clark	RTCSNV	Frontage Road 07/ Highway 91	US 93	I-15	6.1	I
2	Clark	RTCSNV	Las Vegas Boulevard North	Cheyenne Avenue	I-15	10.3	I
3	Clark	RTCSNV	Range Road	CC 215	Las Vegas Boulevard	2.4	J
4	Clark	RTCSNV	Tropical Parkway	Range Road	Lamb Boulevard	1	J
5	Clark	RTCSNV	Donovan Way	Tropical Parkway	Southern terminus	3.1	J
6	Clark	RTCSNV	Hollywood Boulevard	Speedway Parkway	Las Vegas Boulevard	1.6	J
7	Clark	RTCSNV	Lamb Boulevard	Tropical Parkway	Lake Mead Boulevard	5.2	J
8	Clark	RTCSNV	Losee Road	Washburn Road	Lake Mead Boulevard	4.4	J
9	Clark	RTCSNV	Nellis Boulevard	Craig Road	Lake Mead Boulevard	3.1	K
10	Clark	RTCSNV	Craig Road	North 5 th Street	Las Vegas Boulevard	4.6	J
11	Clark	RTCSNV	Cheyenne Avenue	MLK Boulevard	Nellis Boulevard	5.5	J
12	Clark	RTCSNV	Valley View Blvd	I-215	Tropicana Avenue	2.4	I
13	Clark	RTCSNV	Sunset Road	Eastern Avenue	Rainbow Boulevard	7	J
14	Clark	RTCSNV	Eastern Avenue	Tropicana Avenue	Sunset Road	2	J
15	Clark	RTCSNV	Tropicana Avenue	Decatur	Eastern Avenue	5	J
16	Clark	RTCSNV	Russell Road	Paradise	Eastern Avenue	1.6	H
17	Clark	RTCSNV	Blue Diamond Road	I-15	Rainbow Boulevard	3.8	J

No.	County	MPO	Corridor	From	To	Mileage	CUFC ID
18	Clark	RTCSNV	Koval Lane	Sands Avenue	Tropicana Ave	1.5	K
19	Clark	RTCSNV	Industrial/Sammy Davis Jr	Charleston Boulevard	Frank Sinatra Drive	2.9	I
20	Clark	RTCSNV	Frank Sinatra Drive	Sammy Davis Jr	Russell Road	2.9	I
21	Clark	RTCSNV	Dean Martin Drive	Sammy Davis Jr	Blue Diamond Road	5.8	I
22	Clark	RTCSNV	St. Rose Parkway	I-215	I-15	6.2	K
23	Clark	RTCSNV	Raiders Way	St. Rose Parkway	Volunteer Boulevard	1.7	J
24	Clark	RTCSNV	Volunteer Boulevard	Raiders Way	Las Vegas Boulevard	1.9	J
25	Clark	RTCSNV	Lake Mead Parkway	I-11	Boulder Highway	1.7	K
26	Washoe	RTCWC	Red Rock Road	Osage Road	US 395	2.1	J
27	Washoe	RTCWC	Moya Boulevard	Echo Avenue	Red Rock Road	2.4	J
28	Washoe	RTCWC	Military Road	Echo Avenue	Lemmon Drive	2.5	J
29	Washoe	RTCWC	Lemmon Drive	Ramsey Way	US 395	5.8	J
30	Washoe	RTCWC	North Virginia Street	Stead Boulevard	Panther Drive	3.7	J
31	Washoe	RTCWC	US 395	Red Rock Road	I-80	10	K
32	Washoe	RTCWC	North McCarran Boulevard	US 395	I-80	4.5	I
33	Washoe	RTCWC	South McCarran Boulevard	I-80	Mill Street	1.5	J
34	Washoe	RTCWC	Pyramid Way	Ingenuity Avenue	I-80	10.6	J
35	Washoe	RTCWC	Terminal Way	Vassar Street	Greg Street	0.3	H
36	Washoe	RTCWC	Greg Street	Mill Street	Vista Boulevard	4.6	H
37	Washoe	RTCWC	Vista Boulevard	Greg Street	E. Prater Way	1.1	J
38	Washoe	RTCWC	Sparks Boulevard	I-80	E. Prater Way	1	J
39	Carson City, Lyon	CAMPO	US 50	SR 341	I-580	6.2	K
Nevada's Total CUFC Mileage:						150 Miles	
RTCSNV = Regional Transportation Commission of Southern Nevada RTCWC = Regional Transportation Commission of Washoe County CAMPO = Carson Area Metropolitan Planning Organization							

Table 3 includes the CRFC and CUFC IDs and corresponding route/facility descriptors used in Table 1 and Table 2.

Table 3 - CRFC and CUFC IDs and Facility/Route Descriptors

CRFC ID	Route/Facility Descriptor (Rural)
A	Rural principal arterial roadway with a minimum of 25 percent of the annual average daily traffic of the road measured in passenger vehicle equivalent units from trucks
B	Provides access to energy exploration, development, installation, or production areas

CRFC ID	Route/Facility Descriptor (Rural)
C	Connects the PHFS or the Interstate System to facilities that handle more than: <ul style="list-style-type: none"> • 50,000 20-foot equivalent units per year; or • 500,000 tons per year of bulk commodities;
D	Provides access to a grain elevator, an agricultural facility, a mining facility, a forestry facility, or an intermodal facility
E	Connects to an international port of entry
F	Provides access to significant air, rail, water, or other freight facilities
G	Corridor that is vital to improving the efficient movement of freight of importance to the economy of the State
CUFC ID	Route/Facility Descriptor (Urban)
H	Connects an intermodal facility to the PHFS, the Interstate System, or an intermodal freight facility.
I	Located within a corridor of a route on the PHFS and provides an alternative highway option important to goods movement
J	Serves a major freight generator, logistic center, or manufacturing and warehouse industrial land
K	Corridor that is important to the movement of freight within the region, as determined by the MPO or the State

In addition to the CRFCs and CUFCs, the National Highway Freight Network (NHFN) in Nevada also includes the Primary Highway Freight System (PHFS) and other Interstates not on the PHFS. Table 4 shows the current PHFS corridors in Nevada followed by Table 5 that shows the additional interstates that are not currently listed on the Nevada PHFS. NDOT is requesting that the 68.56 miles of existing Interstates shown in Table 5 be considered for addition to the PHFS.

Table 4 – Current PHFS in Nevada

Corridor	From	To	Mileage
I-15	CA/NV border	NV/AZ border	123.75
I-80	CA/NV border	NV/UT border	410.52
I-11	Boulder City Parkway	I-11/I-215 interchange in Henderson	7.49
I-11	I-15	I-11/CC 215 interchange in Centennial Hills	12.44
I-215	I-15	I-11/I-215 interchange in Henderson	11.17
Nevada's Total (PHFS):			565.37 Miles

Table 5 - Interstates not on the PHFS in Nevada


Corridor	From	To	Mileage
I-11	NV/AZ border line	Boulder City Pkwy	15.00
I-11	I-11/I-215 interchange in Henderson	I-15	14.44
I-11	I-11/CC 215 interchange in Centennial Hills	Kyle Canyon Rd (SR 157)	4.10
I-580	I-80	US 50/US 395 intersection south of Carson City	35.02
Nevada's Total (other Interstates not on the PHFS):			68.56 Miles

Figures 1 to 3 depict the National Highway Freight Network in Nevada that includes CRFC and CUFC designations.

The detailed approach for the designation of these corridors and the supporting data is provided in the technical memorandum accompanying this certification letter.

If you have any questions regarding Nevada's CRFCs and CUFCs, please contact Tim Mueller, Freight Planning Program Manager, at 775.888.7351 or by e-mail at TMueller@dot.nv.gov.

Sincerely,

DocuSigned by:

895E72355AF94F2
Sondra Rosenberg, PTP

Assistant Director, Planning
Office of the Director
Nevada Department of Transportation

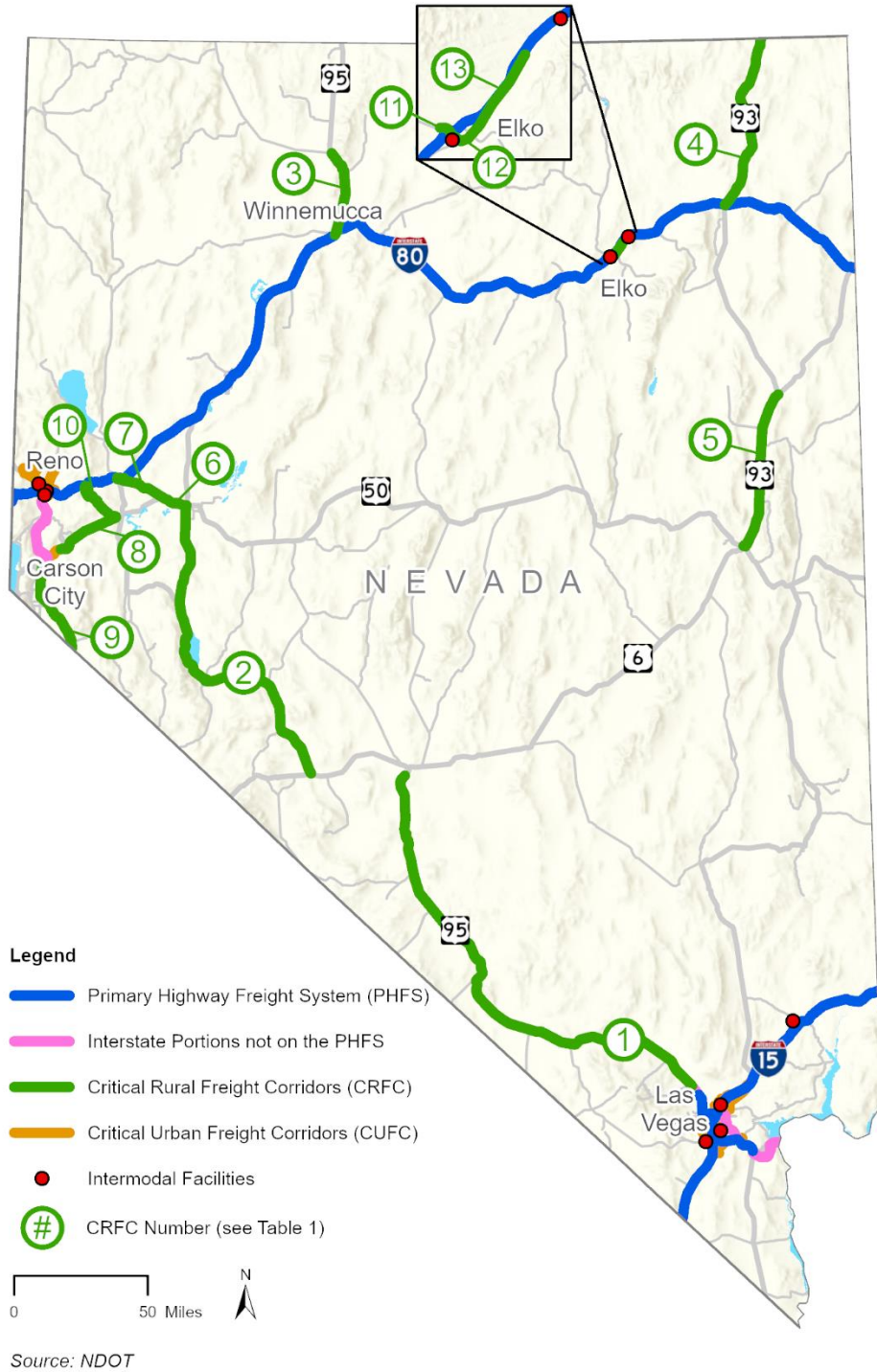


Figure 1 - Nevada's Highway Freight Network: Statewide

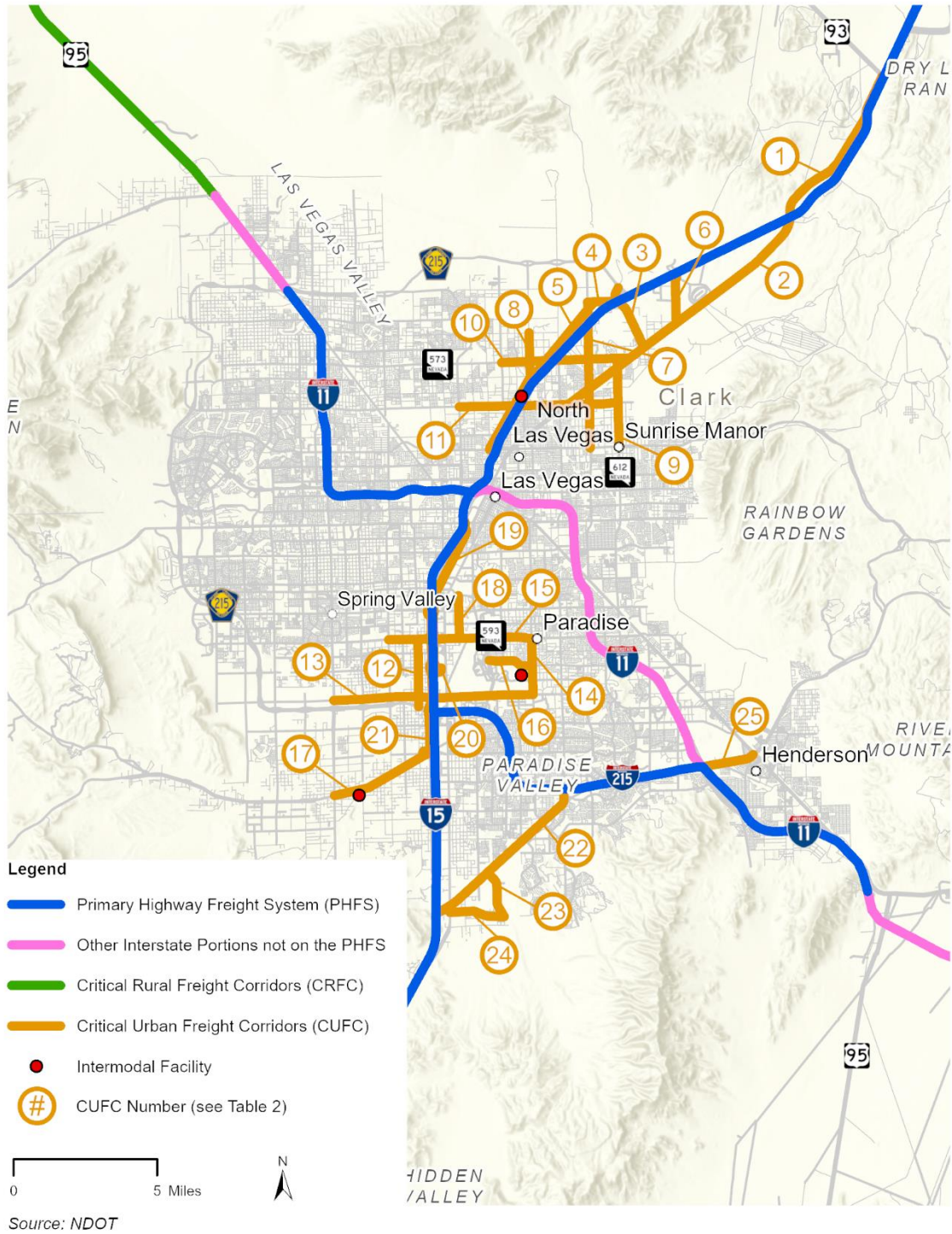


Figure 2 - Nevada's Highway Freight Network: Las Vegas Area

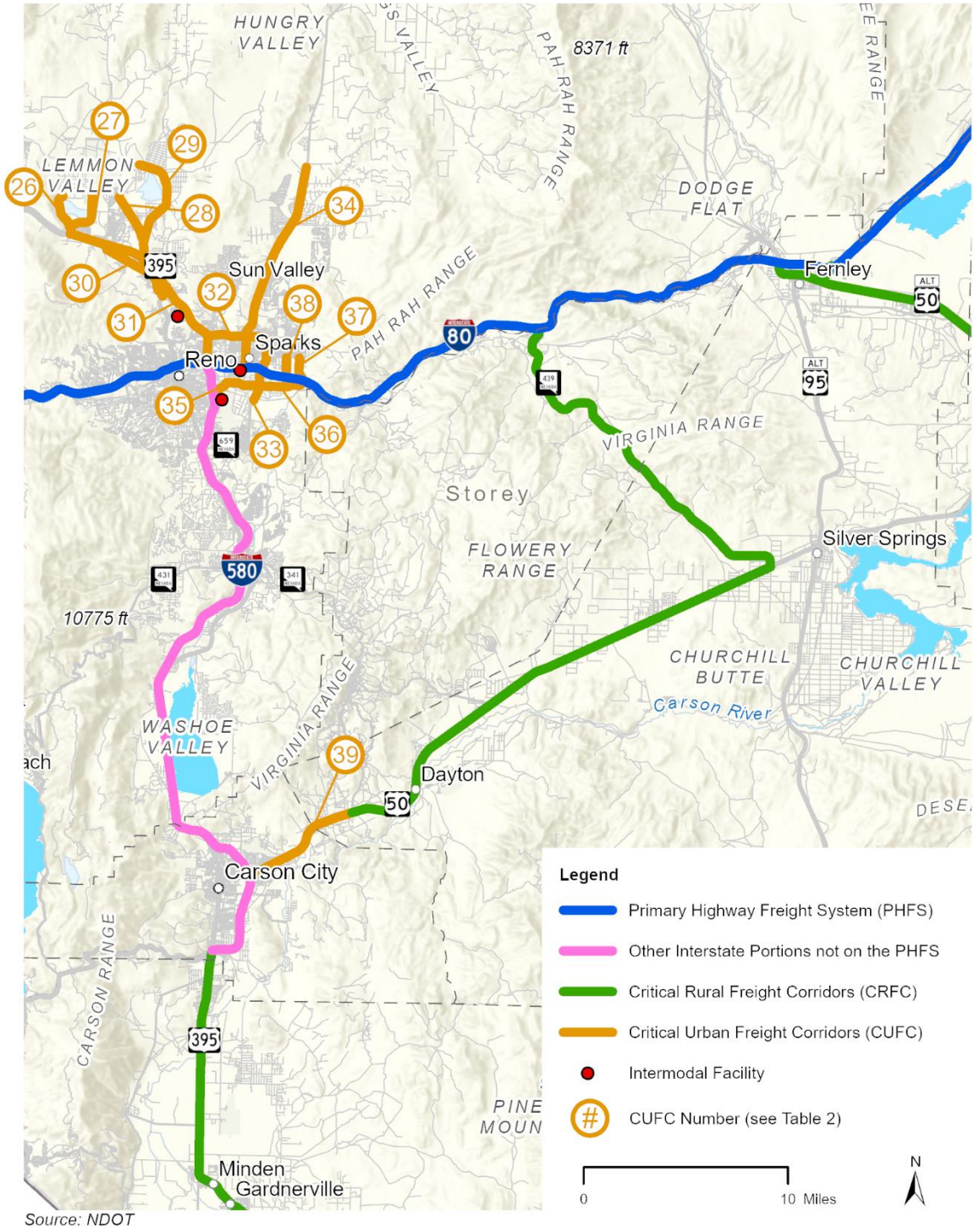


Figure 3 - Nevada's Highway Freight Network: Northwestern Nevada Area

Attachment