

| | | | |
|--------|----------------|---------|-----------|
| STATE | PROJECT NO. | COUNTY | SHEET NO. |
| NEVADA | SPF-088-1(010) | DOUGLAS | 1 |

INDEX OF SHEETS

- 1 TITLE SHEETS AND LOCATION SKETCHES
- 2 - 2B TYPICAL CROSS SECTIONS
- 3 - 3F GENERAL NOTES AND SUMMARIES
- 4 - 5A ROADWAY PLAN AND PROFILE
- 6 - 18 GRADING PLAN
- LC1 - LC6 LOCATION CONTROL
- SD1 - SD4 SPECIAL DETAILS
- SP1 - SP2 SITE PREPARATION (REMOVALS)
- ST1 - ST6 PERMANENT STRIPING DETAILS
- TC1 - TC2 TRAFFIC CONTROL
- T1 - T13 SIGNALS, LIGHTING AND INTELLIGENT TRAFFIC SYSTEMS
- TS1 - TS10 PERMANENT SIGNING
- S1 - S4 STRUCTURE LIST

SEE BOOK OF STANDARD PLANS FOR ROAD AND BRIDGE CONSTRUCTION, 2017 EDITION.

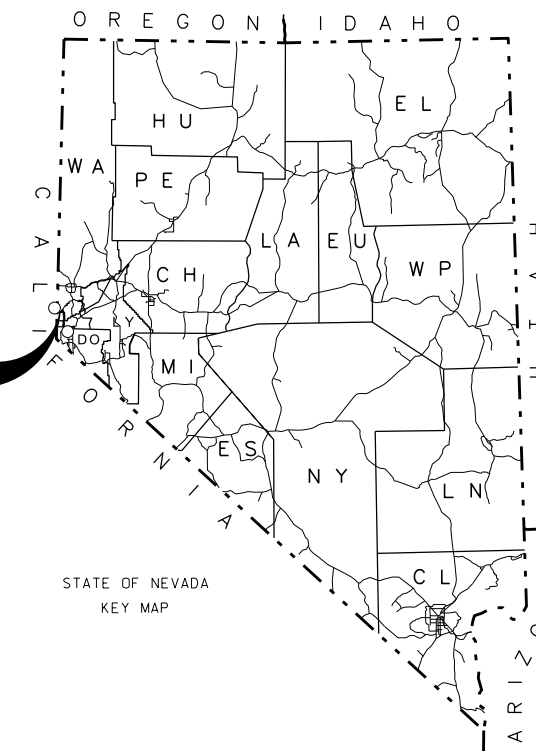
STATE OF NEVADA
DEPARTMENT OF TRANSPORTATION
CONSTRUCTION PLANS
PROJECT LOCATION
DOUGLAS COUNTY
SR88, DOUGLAS COUNTY, AT CENTERVILLE LN.
MP: DO4.367

4/14/2023 -100% SUBMITTAL

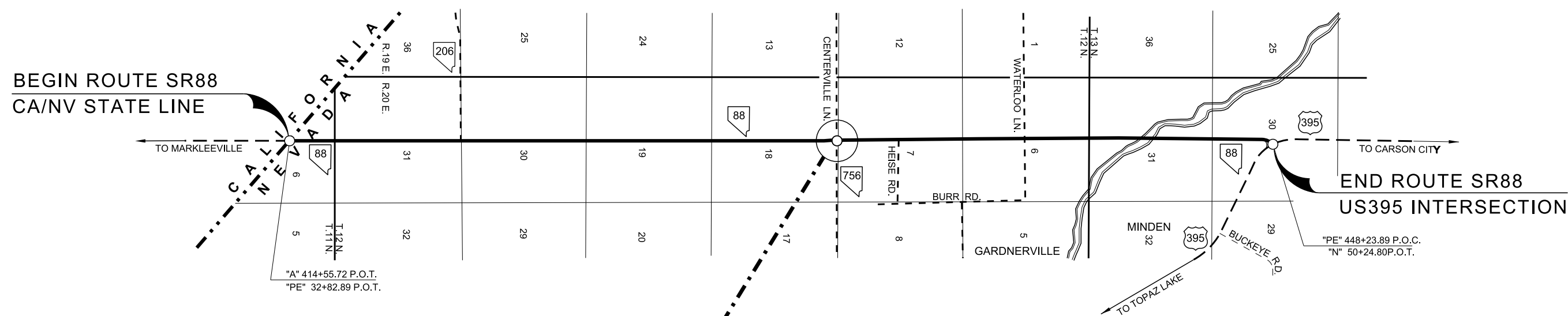
DESIGN CRITERIA

- 2011 AASHTO POLICY ON GEOMETRIC DESIGN OF HIGHWAYS AND STREETS
- 2009 MUTCD
- 2011 AASHTO ROADSIDE DESIGN GUIDE
- 2010 NDOT ROADSIDE DESIGN GUIDE
- 2017 DOT STANDARD PLANS FOR ROAD AND BRIDGE CONSTRUCTION
- 2014 NDOT STANDARD SPECIFICATIONS FOR ROAD AND BRIDGE CONSTRUCTION

ROUTE LOCATION



STATE OF NEVADA
KEY MAP



ALIGNMENT BAR

| | |
|------------------------|-----------------------|
| BEGIN CONSTRUCTION | "PE" 253+50.00 P.O.T. |
| "PE" 256+13.93 | ∠ = 0°29'15" L.T. |
| "PE" 263+38.10 | P.O.T. |
| "L1" 188+10.55 | P.O.T. = |
| PROJECT SPF-088-1(010) | "PE" 263+44.86 P.O.T. |
| "PE" 263+55.19 | P.O.T. |
| "PE" 263+55.19 | P.O.T. = |
| "PE" 263+36.00 | P.O.T. |
| END CONSTRUCTION | "PE" 267+36.00 P.O.T. |

| | |
|--|------------------------|
| CONTRACT NO. XXXX BACK | PROJECT SPF-088-1(010) |
| BEGIN CONSTRUCTION | "PE" 253+50.00 P.O.T. |
| END CONSTRUCTION | "PE" 267+36.00 P.O.T. |
| PROJECT SPF-088-1(010) CONSTRUCT COMPACT ROUNDABOUT LENGTH OF PROJECT 0.000 MILES LENGTH OF CONSTRUCTION 0.263 MILES LENGTH OF ROUTE 7.868 MILES | |
| CONTRACT NO. XXXX BACK | END CONSTRUCTION |
| END CONSTRUCTION | "PE" 267+36.00 P.O.T. |



APPROVED DECEMBER 5, 2017

Rudy Malfabon
RUDY MALFABON, P.E. DIRECTOR, DEPT. OF TRANSPORTATION

GOVERNOR BRIAN SANDOVAL
CHAIRMAN, TRANSPORTATION BOARD

| | | |
|-----------------|-----------------|----------------------|
| NEVADA DOT | DESIGN DIVISION | |
| | DESIGNER | BRIAN DEAL |
| | SENIOR DESIGNER | BILL EZELL |
| PROJECT MANAGER | | PHONE (775) 888-7661 |