

**EMPOWERING I-80 COMMUNITIES  
TODAY AND TOMORROW**



**Appendix A.14**

**I-80 Corridor System Master Plan: Tourism Working Group**

Table of contents for Appendix A.14:

- 1- Introductory narrative providing context for the work
- 2- Work product samples

## EMPOWERING I-80 COMMUNITIES TODAY AND TOMORROW



### **I-80 CSMP Tourism Working Group – Introduction**

Tourism continues as an economic driver for I-80 corridor communities. The mission of the Tourism Working Group has been to develop and explore tourism issues that are relevant to the I-80 CSMP and set a course for the ongoing work of the I-80 Stakeholder Network. Tourism provides major social, cultural, and economic vitality for communities along the I-80 Corridor. Engaging access to the wide array of tourism elements along the corridor increasingly surfaces as a critical issue for the economic viability and vitality of the tourism industry and the communities wanting to engage tourists. The following documents provide an introduction into what the Tourism Working Group has achieved to date and a sense of how this work should be facilitated moving forward with the I-80 Stakeholder Network.



**Roseville** invites I-80 travelers to celebrate 7,000 years of history in the city's **Maidu Interpretive Center and Historic Site**. Located in a 30-acre park, this museum showcases Maidu artifacts including baskets, bows and arrows, toys and jewelry that detail the history of these indigenous people of California. The facility also offers tours of ancient petroglyphs, campfire storytelling events, and a Native American foods festival each February.

8 miles west of **Elko**, I-80 travelers will find the **California Trail Interpretive Center**. Visitors will find a reconstructed Shoshone village and wagon encampment, costumed interpretations and demonstrations of daily life for Native Americans and pioneers, original works of art, and a wide variety of seasonal exhibits. For spectacular views of the Ruby Mountains, visitors are also welcome to enjoy the easy hiking trails adjacent to the Trail Center.

32 miles northwest of **Brigham City**, **Golden Spike National Historic Site** is the location where the Union Pacific and Central Pacific Railroads met in 1869. Visit in May for the annual re-enactment marking the anniversary of the original ceremony which completed the nation's first transcontinental railroad. Working replicas of the 1869 steam locomotives operate from May through October, and there are two auto tours and an easy 1.5 mile hike. The visitor center is open year-round.

10 miles west of **Kemmerer**, **Fossil Butte National Monument's** visitor center features more than 300 fossils including a 13-foot crocodile. During the summer, visitors can hike one or both historic Quarry Trails for a closer look at the geology, wildlife and plants of the high desert, or enjoy the 7.5-mile scenic loop via car. During the winter, snowshoeing and cross-country skiing is popular along the trails.

**Rawlins** is home to the **Old Wyoming State Penitentiary (1901-1981)**. As the state's first penitentiary, the prison opened in 1901 with 104 cells, no electricity or running water, and very inadequate heating. Visitors to the site can learn about the prison's varied past, which often included grizzly, old-west methods of punishment, at the Wyoming Frontier Prison Museum. From the museum, which houses various artifacts, guided tours of the prison and its cemetery are offered. Special Halloween events are also a highlight at this supposed haunted Wyoming location.

Explore an **authentic gold rush-era town** **Auburn** offers visitors a chance to see how California gold rush miners lived. During a one-day ride, visit 16 gold rush towns and learn the unique history of each location. Tourists can even search for gold themselves! Directions and brochures are available at Auburn's California Welcome Center.

**Davis**, California, offers interstate travelers a break from the road. Hop off I-80 and onto miles and miles of quiet, tree lined streets: Davis has recently been honored by *Bicycling Magazine* as **America's best small town for cycling**. Local shops provide rental wheels so visitors can explore this beautiful location sans car.

**Auburn's Foresthill Bridge** soars 730 feet above the riverbed of the American River's north fork. The 2,428 foot-long bridge with piers only 16 feet shorter than the Golden Gate Bridge is the highest bridge in California and the fourth highest in the world. Built by the Bureau of Land Reclamation, the bridge is located east of Lincoln Way on Foresthill Road in Auburn.

**Reno-Tahoe Territory**

**Winnemucca**

**West Wendover**

**Cowboy Country**

**Brigham City**

**Kemmerer**

**Rock Springs**

**Rawlins**



**Southeast**

**Auburn**

**Truckee**

**Lovelock**

**Battle Mountain**

**Elko**

**Wendover**

**Heber City**

**Midway**

50 miles southeast of **Rock Springs** lies **Flaming Gorge National Recreation Area**. Located in southwestern Wyoming and Eastern Utah, this national recreation area encompasses 201,000 acres of scenic land surrounding the Flaming Gorge Reservoir. Nationally known as the "fishing hot spot" of America, this desert reservoir features the spectacularly colorful Firehole Canyon, as well as a peek into the area's history through unique petroglyphs and 40 million year-old fossils.

**Pony Express Territory**

**Wasatch Front**

**Western Utah**

**UTAH**

**Elko's Western Folklife Center** is the host of the annual National Cowboy Poetry Gathering which celebrates its 30th anniversary in 2014. Basque culture plays an important role in Cowboy Country.

**Fort Bridger** was originally a 19th-century fur trading outpost established in 1842. Named after trapper James Bridger, this spot was a vital resupply point for wagons on the Oregon, California and Mormon Trails. Travelers can celebrate the history of the fur trade era each September during the annual Fort Bridger Rendezvous, one of the largest mountain man gatherings in the nation.

**Vallejo** is home to the country's first combination **wildlife park, oceanarium and theme park**. At the 135-acre Discovery Kingdom, visitors can meet exotic animals like anteaters and macaws, feed and pet Atlantic bottlenose dolphins, and even take a ride on an Asian elephant. After the sun goes down, guests are invited to lay out their sleeping bags to watch the nighttime action in the park's massive shark tank.

**Central Valley**

**Sierras and Gold Country**

**CALIFORNIA**

**West Wendover**, Nevada is located on the eastern border of Nevada and is contiguous with **Wendover City, Utah**.

Near **Heber City** and located between the Wasatch and Uinta mountain ranges, Heber Valley has a variety of attractions such as state parks, art galleries, and the **Heber Valley Historic Railroad**. Scenic train rides from the Heber Valley Railroad Depot take you through farmland, along the Deer Creek Reservoir, and down Provo Canyon during every season of the year. Wildlife sightings are common and can include deer, elk, and eagles. Special holiday and seasonal events occur throughout the year.

Stop in **Lovelock**, Nevada, to fasten a lock on a never-ending chain in **Lovers Lock Plaza**. Shortly after the turn of the millennium, Lovelock adopted the ancient Chinese custom of symbolically locking one's love on a never-ending chain. Dedicated on Valentine's Day 2006, this custom has made Lovelock the nation's official love-locking destination. Visitors can also enjoy outdoor recreation including hiking, boating, hunting and fishing. Visit points of interest such as ghost towns, mining camps, the Lovelock Indian Caves, the Immigrant Trail, the 120-year old restored Depot, the City Museum and many more interesting attractions.

Some of the most popular activities in the area include hiking, mountain biking, horseback riding and ATV riding. The **Bonneville Salt Flats** are nearby which is the site of the top land speed record of almost 630 mph. From the top of Three Mile Mountain to the east it is possible to see the curvature of the earth.

**Midway**, Utah is home to **Soldier Hollow at Wasatch Mountain State Park**. Soldier Hollow was the Nordic skiing venue for the 2002 Olympics. Winter sports enthusiasts will find cross-country ski trails, snowshoeing, and the longest tubing lanes in the country. Summer activities include 19 miles of trails to hike or bike.



## CALIFORNIA

- Length of I-80 in the state of California: 199 miles.
- I-80 begins at an interchange with U.S. Route 101 in San Francisco. This area of I-80 is among the busiest in the region, carrying a peak of around 300,000 vehicles per day.
- Construction of a portion of the route through Pinole, California, involved the experimental transplantation of the rare species Santa Cruz tarweed in the right-of-way.

## NEVADA

- I-80 spans 410 miles across the state of Nevada.
- The Nevada portion of I-80 follows the paths of the Truckee and Humboldt Rivers, used as a transportation corridor since the California Gold Rush of the 1840s.
- I-80 in Nevada also follows the historical routes of the California Trail, First Continental Railroad, Feather River Route, the original route of the Victory Highway, State Route 1, and U.S. Route 40.

## UTAH

- I-80 stretches 196 miles across northern Utah.
- The longest distance between exits on any interstate highway is between Wendover and Knolls in Utah. This portion of I-80, crossing the Great Salt Lake Desert, spans 37 miles.
- The four and a half-mile long section of I-80 between State Route 68 and the Salt Lake City International Airport was the final piece of all of I-80 to be opened to traffic.

## WYOMING

- 402 miles of I-80 are in the state of Wyoming.
- In this state, I-80 reaches its maximum elevation of 8,640 feet above sea level at Sherman Summit, near Buford. At 8,000 feet, it is the highest community along I-80.
- In Western Wyoming, I-80 passes through the Dry Red Desert and over the Continental Divide two different times. In this area, two ridges of the Rocky Mountains split, forming the Great Divide Basin.

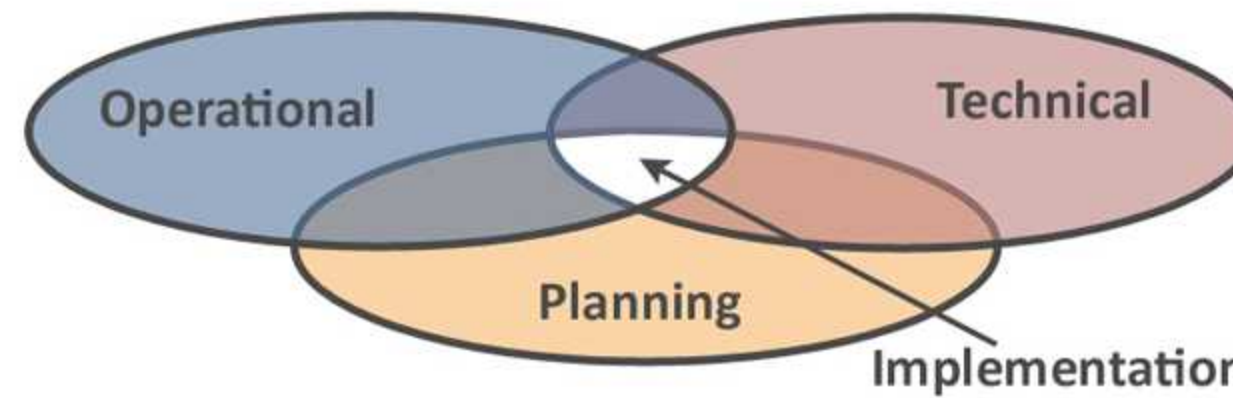
### Vision for the future

The I-80 Corridor System Master Plan (CSMP) Study is a partnership to provide mobility and transportation solutions throughout the I-80 corridor, now and well into the future. The corridor includes partner states California, Nevada, Utah, and Wyoming and extends from San Francisco, California to Cheyenne, Wyoming.

The goal for the study is to identify a consensus-based list of early action strategies based on existing planning information. Stakeholders are working to articulate an agreed-upon vision for the future vitality of corridor communities and the transportation system that will achieve that envisioned future.

Ultimately, this effort will include establishing the ongoing network necessary for implementing and adapting those strategies.

### Building a network



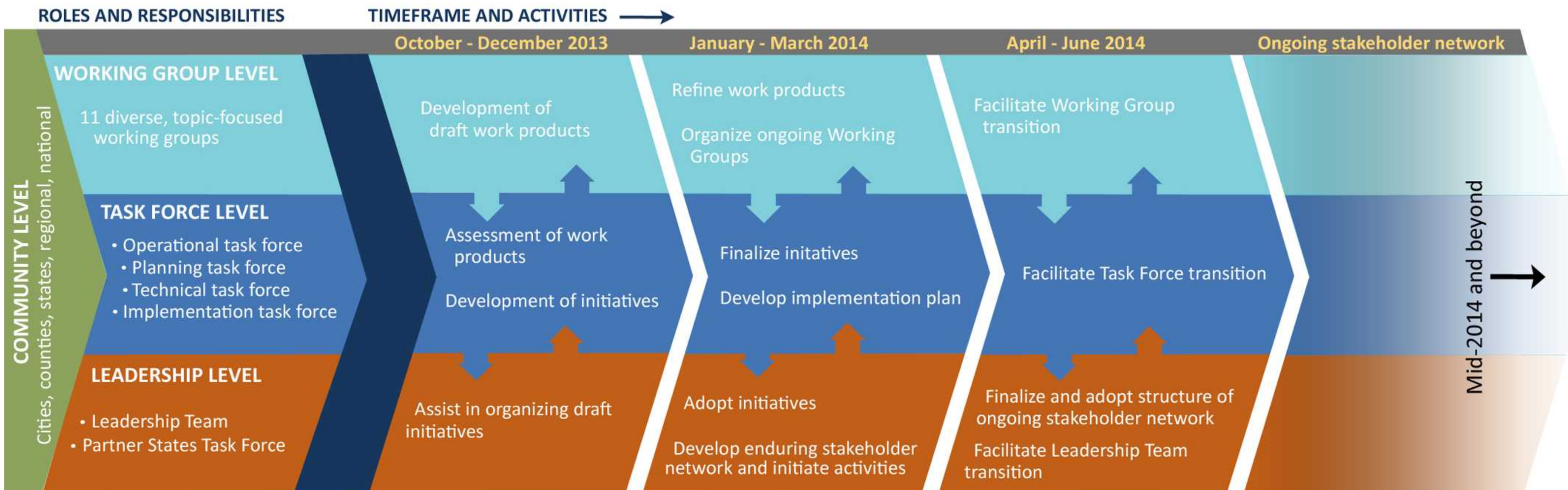
In order to develop the initiatives embodied in the CSMP, the study is organized into task forces. The task forces bring together stakeholders with similar interests across the states into four groups: Operational, Technical, Planning, and Implementation. Each task force will collaborate internally and with the other task forces to accomplish four main tasks: fact finding, evaluation and identification of long-term infrastructure and multimodal needs, initiatives to meet identified needs, and strategies for implementation. Undoubtedly, this will include ideas that can be implemented quickly.



### Conversations lead to initiatives

The strength of this multi-state dialogue lies with the focused discussion occurring in the working groups. Diverse groups of stakeholders are exploring multiple dimensions of the I-80 corridor communities and the implications these different dimensions imply for supporting infrastructure.

Topics under discussion include: energy infrastructure, freight and logistics, geographic information systems, mobility, rural planning, safety, tourism, and wildlife crossings, to name a few. The products produced within these working groups provide the basis for the broader work undertaken by the stakeholder network task forces.



## WANT TO LEARN MORE?

Visit us online!



[YouTube.com/i80masterplan](https://www.youtube.com/i80masterplan)

- Website [i80vision.org](http://i80vision.org)
- Twitter [@i80masterplan](https://twitter.com/i80masterplan)
- Email [engage@i80vision.org](mailto:engage@i80vision.org)



## JOIN THE CONVERSATION!

Visit our project website at [i80vision.org](http://i80vision.org) if you're interested in any of the topics below.

- Energy Infrastructure
- Freight & Logistics
- MAP 21
- Safety
- Maintenance



- Rural Planning
- GIS
- Tourism
- Program/Project Delivery
- Truck Parking
- Wildlife Crossings



[i80vision.org](http://i80vision.org)

# I-80 CORRIDOR SYSTEM MASTER PLAN STUDY

MARCH 14, 2014

## NEWS FLASH



### STUDY UPDATES

#### Implementation Task Force kickoff

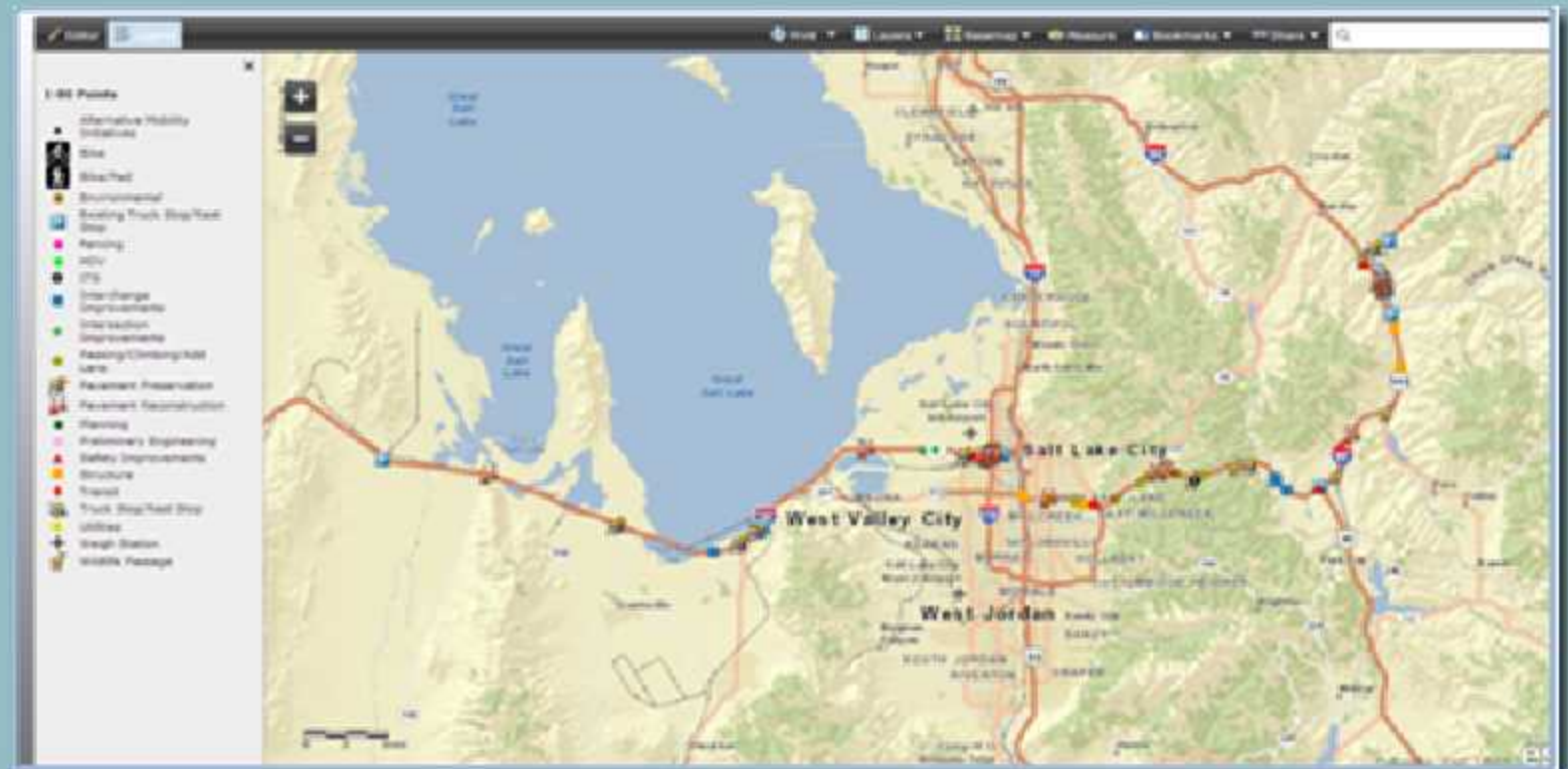
The Implementation Task Force met Thursday, March 13, to begin the process of identifying and executing strategies for transitioning the study stakeholder group into the ongoing Stakeholder Network. This task force will meet every Thursday until the transition of the network on April 30. The role of this group is to organize the ongoing network structure, support working group initiatives, locate resources and develop the framework for the network. Check our study website in the coming weeks for updates on this important task force! [www.i80vision.org](http://www.i80vision.org).

#### GIS Platform rollout

The I-80 Corridor Study Master Plan leadership team is excited to present the newly updated GIS platform! The GIS team has been working hard to put together an application that puts tons of useful information at your fingertips. This powerful tool will assist the network in our work to enhance the corridor and its communities, now and in the future.

Access the I-80 GIS maps: <http://tinyurl.com/q4bvm4q>

A link to a helpful tutorial will follow in the next few days.



VIA **@NEVADADOT**: Windy where you are today? RT these windy day driving safety tips: <http://bit.ly/1bLGwbl>  
Tips: buckle up; leave extra time to take it slow!

VIA **@UDOTTRAFFIC**: Restrictions: Chains are required for all semis traveling EB/WB I-80 through Parley's Canyon. #utsnow

VIA **@WYOMINGPBS**: 100 Years on the Lincoln Highway: A Wyoming PBS Documentary. <http://tinyurl.com/lxl3lqw>

### NEWS & INFORMATION

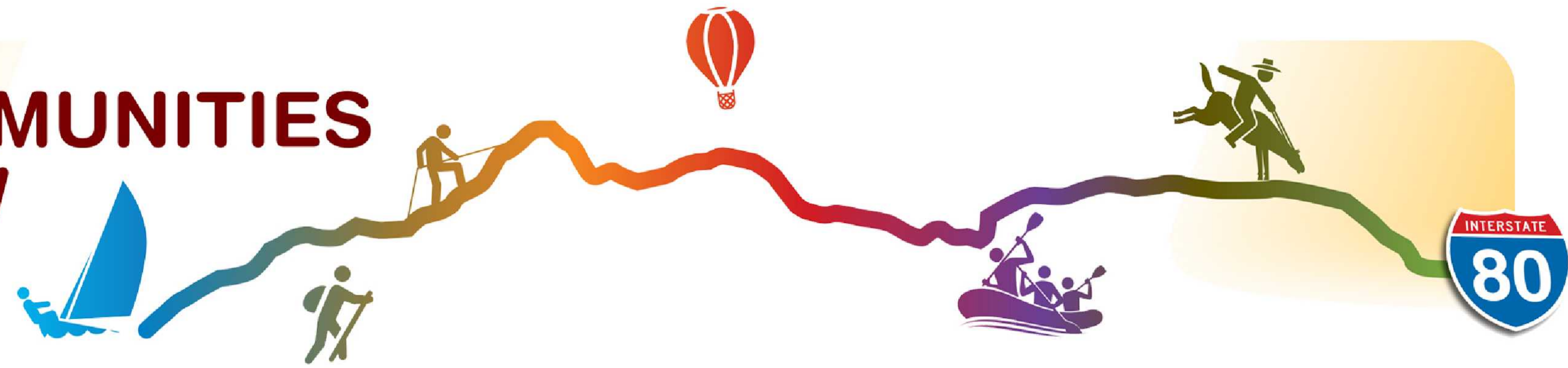
#### Caltrans entirely rebuilds I-80 from Auburn to Nevada state line

It took 15 years, \$820 million and countless lane closures, but as of later this month, officials of the California Department of Transportation say they will have finished rebuilding I-80, often from scratch, from Auburn to the Nevada state line – 423 miles worth of lanes.

Read more here: <http://tinyurl.com/keazc6c>



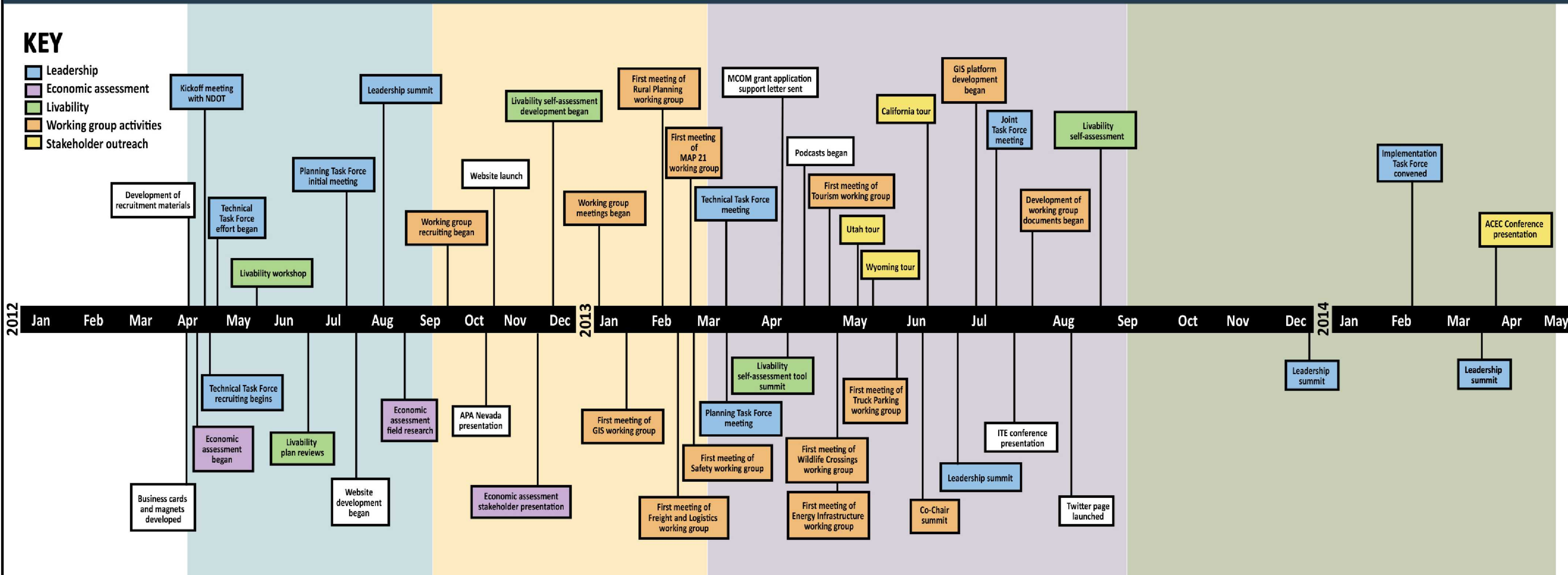
# EMPOWERING I-80 COMMUNITIES TODAY AND TOMORROW



## I-80 Corridor System Master Plan Study Chronology of Major Events

### KEY

- Leadership
- Economic assessment
- Livability
- Working group activities
- Stakeholder outreach



### Phase 1: Getting going

- Stakeholder recruitment
- Identification and organization of existing information
- Investigation of stakeholder needs
- Assessment of team organization
- Multiple meetings of task forces held

### Phase 2: Getting organized

- Identification of discussion topics for further investigation
- Organization of working groups to address special topics
- Working group discussions began
- Economic assessment reviewed
- Livability study developed

### Phase 3: Getting results

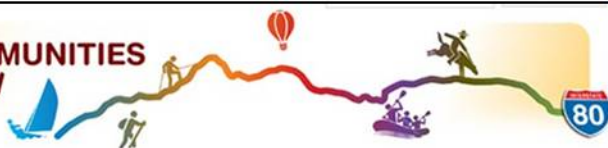
- Working group dialogues allow participants to better understand topic subject and implications
- Study leadership team conducted stakeholder outreach
- Working group co-chair summit
- GIS initial platform is introduced to the stakeholder network

### Phase 4: Getting on

- Investigation and generation of an enduring I-80 stakeholder network structure
- Production of a wide range of working group products
- Further refinement and integration of the GIS platform
- Engaged the stakeholder network with topic initiatives



# EMPOWERING I-80 COMMUNITIES TODAY AND TOMORROW



## I-80 Corridor System Master Plan

Home

Calendar

Study Details

Study Updates

Economic Assessment

▼ Livability

Member

Vote Your Opinions

Developing Issues and Ideas

▼ I-80 Corridor Resources

Plan Summaries

Links

▼ Partner States Task Force

Members

Meetings

▼ Planning Task Force

Members

Meetings

▼ Technical Task Force

Members

Meetings

▼ Implementation Task Force

Members

Meetings

▼ Working Groups

► Energy Infrastructure

► Freight and Logistics

► GIS Across the States

► Maintenance

► Managed Lanes/Tolling

► MAP 21

► Mobility/Operation

► Program/Project Delivery

► Collaborative Planning

Home

### Contents

- 1 Study overview:
- 2 Study timeline:
- 3 Study goals:
- 4 Study objectives
- 5 Livability Principles
- 6 Details



## Weekly Update

Click above for the latest podcast weekly update!

## Study overview:

Welcome to the website for the I-80 Corridor System Master Plan (CSMP)—a partnership to provide mobility and transportation solutions throughout the I-80 corridor, now and well into the future. This corridor includes partner states California, Nevada, Utah, and Wyoming, and extends from San Francisco, California to Cheyenne, Wyoming. This is a working website that hosts the ongoing conversations of diverse groups exploring multiple dimensions of I-80 corridor communities and the implications these different dimensions imply for supporting infrastructure. Specifically, this exploration of the I-80 corridor emanates from the six guiding livability principles embraced by the Partnership for Sustainable Communities, an interagency partnership between HUD, DOT, and EPA. While ultimately many of the ideas from this study will focus on transportation, all the ideas will be connected to the livability of corridor communities, the strategic success of the nation, and benefit of future generations.

## Study timeline:

To learn more about study activities undertaken to date, click the image below.

### I-80 Corridor System Master Plan Study Chronology of Major Events







**EMPOWERING  
I-80 COMMUNITIES  
TODAY AND TOMORROW**

# I-80 Corridor System Master Plan



[www.i80vision.org](http://www.i80vision.org)

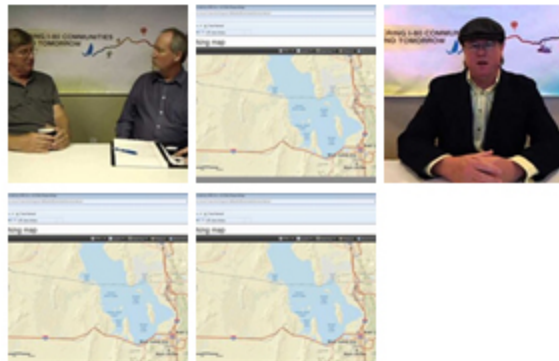


- Tweets >
- Following >
- Followers >
- Favorites >
- Lists >

Tweet to I-80 Master Plan

@i80MasterPlan

Photos and videos >



Who to follow · Refresh · View all

- Blend Marketing @blendmc ×  
[Follow](#)
- Ryan Churchill @rCHURCHIE ×  
[Follow](#)
- Ritz @TRobRitz32 ×  
[Follow](#)

Find people you know  
Import your contacts from Gmail

[Connect other address books](#)

TWEETS 89 FOLLOWING 154 FOLLOWERS 44 [Settings](#) [Follow](#)

Tweets

**I-80 Master Plan** @i80MasterPlan · 1m  
Looking for I-80 corridor resources? Visit our links page for more than four dozen informative downloads: [i80vision.org/to-dos/file-ca...](http://i80vision.org/to-dos/file-ca...)  
[Expand](#) [Reply](#) [Retweet](#) [Favorite](#) [More](#)

**I-80 Master Plan** @i80MasterPlan · 1m  
Visit us on YouTube! [YouTube.com/i80masterplan](http://YouTube.com/i80masterplan)  
[View summary](#) [Reply](#) [Retweet](#) [Favorite](#) [More](#)

**I-80 Master Plan** @i80MasterPlan · 2m  
Want to know what we've been up to? Check out the I-80 corridor study timeline of events: [i80vision.org/#TOC-Study-tim...](http://i80vision.org/#TOC-Study-tim...)  
[Expand](#) [Reply](#) [Retweet](#) [Favorite](#) [More](#)

**I-80 Master Plan** @i80MasterPlan · Mar 20  
Our #I-80 website has a wealth of information about the study & its goals, task forces, working groups & livability: [i80vision.org](http://i80vision.org)  
[Expand](#) [Reply](#) [Retweet](#) [Favorite](#) [More](#)

**I-80 Master Plan** @i80MasterPlan · Mar 20  
In case you missed it... meet #I-80 Master Plan Project Manager Coy Peacock in



Uploads ▾

Date added (newest - oldest) ▾



**I-80 Master Plan Update:  
Week of December 9, 2013**

12 minutes ago



**I-80 Master Plan Update:  
Week of October 28, 2013**

17 views 1 month ago



**I-80 Master Plan Update:  
Week of October 21, 2013**

21 views 1 month ago



**I-80 Master Plan Update:  
Week of October 7, 2013**

22 views 1 month ago



**I-80 Master Plan Update:  
Week of September 21, 2013**

18 views 2 months ago



**I-80 Master Plan Update:  
Week of September 16, 2013**

28 views 2 months ago



**I-80 Master Plan Update:  
Week of September 9, 2013**

44 views 3 months ago



**I-80 Corridor Study Master  
Plan Update: Week of Aug...**

37 views 4 months ago



**I-80 Corridor Study Master  
Plan Update: Week of July...**

30 views 4 months ago



**I-80 Corridor Study Master  
Plan Update: Week of July...**

31 views 5 months ago



**I-80 Corridor Study Master  
Plan Update: Week of June...**

51 views 5 months ago



**I-80 Master Plan - Meet I-80  
CSMP study manager Coy...**

67 views 5 months ago



**I-80 Corridor Study Master  
Plan Update: Week of June...**

25 views 6 months ago



**I-80 Corridor Study Master  
Plan Update: Week of June...**

29 views 6 months ago



**I-80 Corridor Study Master  
Plan Update: Week of May 2...**

22 views 6 months ago



**I-80 Corridor Study Master  
Plan Update: Week of May...**

18 views 6 months ago



**I-80 Corridor Study Master  
Plan Update: Week of May...**

14 views 7 months ago



**I-80 Corridor Study Master  
Plan Update: Week of May...**

12 views 7 months ago



**I-80 Corridor System Master  
Plan Livability Principles**

57 views 7 months ago



**I-80 Corridor Study Master  
Plan Update: Week of April...**

20 views 7 months ago



**I-80 Corridor Study Master  
Plan Update: Week of April...**

56 views 7 months ago