

1. Study Area

The overall I-80 Corridor Study area encompasses five miles north and south of I-80 from the California state line to the West McCarran Boulevard (SR 651) Interchange, and I-80 east from the East McCarran Boulevard (SR650) Interchange in the City of Sparks to east of the Wadsworth-Pyramid (SR 427) Interchange (see Figure 1). The urban portion of the corridor from the West McCarran Boulevard Interchange to the East McCarran Boulevard Interchange is being analyzed under a separate study. The Truckee River bisects the study area and forms the Washoe and Storey County boundary. The region west of City of Reno and north of the

Truckee River falls under Washoe County jurisdiction, while the southern portion, east of City of Sparks, lies in Storey County. A small region in the eastern portion of the project area is within Lyon County and the Pyramid Lake Reservation. There are three main cities within the study area: two major metropolitan areas, City of Reno and City of Sparks and Fernley, a less populated city. Most of the land along the corridor is private; however, considerable portions of public land is owned by the Bureau of Land Management (BLM) in the northeastern portion of the project and one U.S. Forest Service parcel is in Verdi (McMorran 2007).

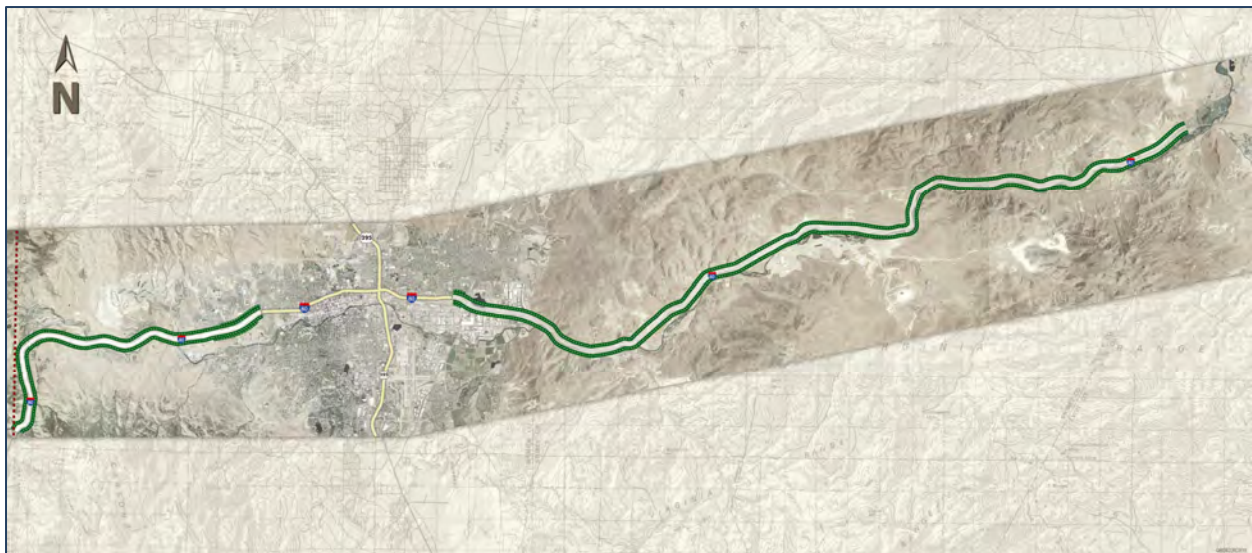


Figure 1. I-80 Corridor Study Area