

What is Stormwater?



Stormwater is rainfall or snowmelt that runs off surfaces such as roads, compacted ground surfaces and rooftops. Stormwater runoff can pick up and carry pollutants like sediment, oil and grease, metals, toxic household cleaners, organic debris, animal waste and litter that eventually flows into streams, rivers, ponds, lakes and oceans.

Sewer Systems and Storm Drains

In Nevada, sewer systems and stormwater drains are two different things. Water that goes down a sink or toilet flows to a wastewater treatment plant where it is treated and filtered. Water that flows down driveways and streets into a gutter goes directly into a storm drain that flows untreated into a lake, river or stream. Pollutants in stormwater can contaminate our waters and harm or kill off local wildlife.

Pollution is a problem and we can all be a part of the solution!

- Pick up pet waste and dispose of it properly.
- Use pesticides and fertilizers sparingly.
- Use organic mulch or safer pest control methods.
- Rake leaves and compost or mulch yard waste. Don't leave it in the street or sweep it into storm drains.
- Don't pour household hazardous waste onto the ground or into storm drains.
- Contact your local environmental,

health or solid waste agency for information about out how to properly dispose of these substances.

- Use a commercial car wash or wash your car on your yard so the water infiltrates into the ground.
- Repair vehicle leaks and dispose of used auto fluids and batteries at designated drop-off locations.
- **Get involved!** Join organizations to help clean up litter and debris in your community.
- Your organization or business can also help by joining the **Adopt-a-Highway** or **Sponsor-a-Highway** programs!

Don't be a Dirty Drip!



Illicit Discharges

Never dump anything into the storm drain (like paints, oils, or trash). If you see anyone dumping into a storm drain, call NDEP's spill response hotline immediately at **(888)-331-6337**.

We can all help to PROTECT NEVADA'S WATERS today and for future generations!

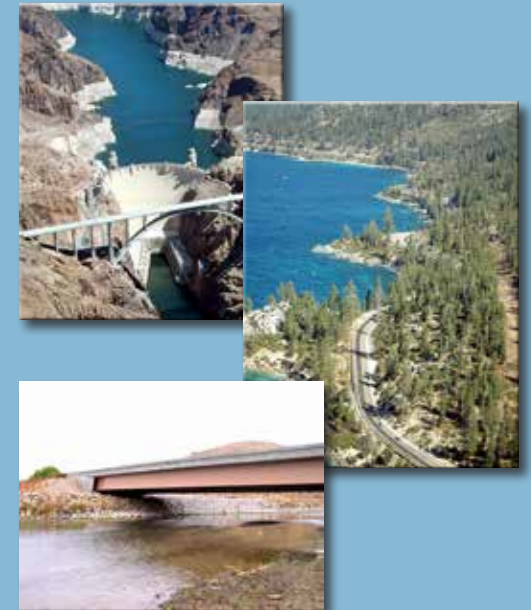
For more information and educational resources visit
www.Nevadadot.com
1263 S. Stewart St.
Carson City, Nevada 89712



Brian Sandoval, Governor Rudy Malfabon, P.E., Director

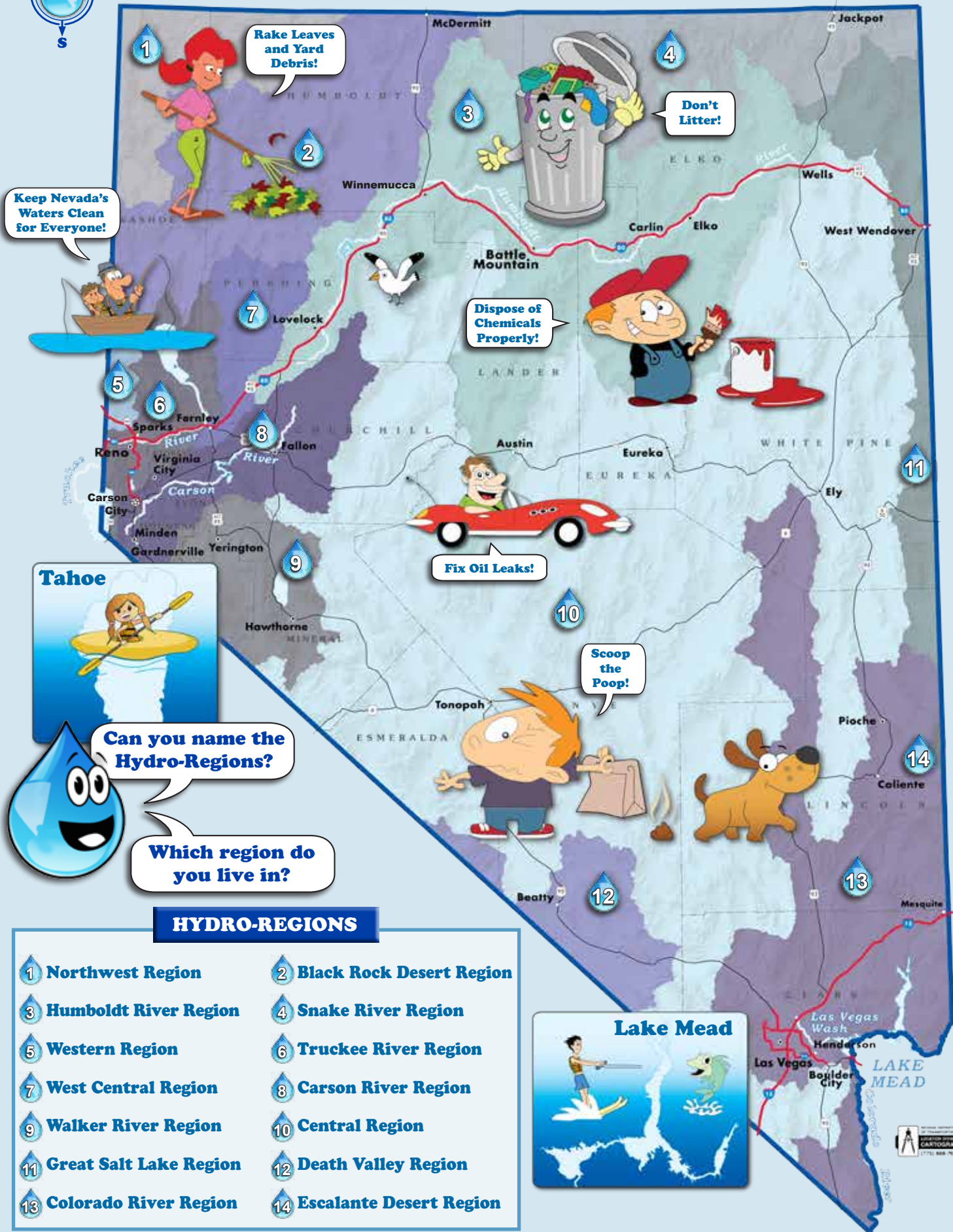


A guide for the Nevada DOT Stormwater Management Program



www.nevadadot.com

NEVADA'S HYDRO-REGIONS



HYDRO-REGIONS

- | | |
|---------------------------|----------------------------|
| 1 Northwest Region | 2 Black Rock Desert Region |
| 3 Humboldt River Region | 4 Snake River Region |
| 5 Western Region | 6 Truckee River Region |
| 7 West Central Region | 8 Carson River Region |
| 9 Walker River Region | 10 Central Region |
| 11 Great Salt Lake Region | 12 Death Valley Region |
| 13 Colorado River Region | 14 Escalante Desert Region |

