

Way to Go



Tim Ruguleiski

Let There Be Light

It was a scary situation for out-of-state travelers Kim and Marcia Brown when their camper truck headlights went out while driving through the evening dusk on I-80 in Sparks. But luckily, District 2 maintenance members **Bill Bass** and **Fred Burnet** carefully guided the motorists to nearby RV parking where they could safely stay the night.

"Our thanks and gratitude for their help and sincere concern. The world is a better place because of them!"

Motorin' Away

When Las Vegas resident Teresa Bern called about an illegally-parked motor home near I-95, NDOT Public Information Officer **Bob McKenzie** put her in contact with crew 916's **Tim Ruguleiski**. After a look at the vehicle's location, Tim immediately contacted the proper authorities and an NDOT crew was soon assisting NHP to safely remove the vehicle from public property.

"You have a great team in Vegas and I just wanted to let you know what an awesome job they did for me."

A+ Tire Repair

Miles away from his Idaho home, Ralph Johnston's front tire went flat while traveling down SR 226. But, not to worry. Crew 350 Highway Construction Aide **Alex Baca** contacted Equipment Mechanic **Paul Taylor**, who was soon there helping to replace the flat tire.

"I appreciate their concern and assistance, and commend the employees in your organization," Ralph Johnston wrote.

Earthmovers

Contractors A&K Earthmovers recently thanked **Dave Schwartz** and **crew 920** for their safety, professionalism and attention to detail. "The department should be happy to have them, and the people of Nevada should know that crew 920 was a fine steward of their tax dollars."

LIGHTS, CAMERA, ACTION.....



NDOT's own assistant chief maintenance/operations engineer Denise Inda (pictured on left) recently filmed a lead role in a TV documentary discussing the proud heritage of children of Basque immigrants such as herself.

Did You Know?

Nevada is home to the nation's only Basque Studies Department at the University of Nevada, Reno.

New Faces

Gary Bodell, Las Vegas
 Frank Arabasz, Las Vegas
 David Clark, Ely
 Elizabeth Dickey, Carson City
 Nathan Enos, Las Vegas
 Michael Foster, Carson City
 Kenneth Jones, Blue Jay
 Aimee Napolitano, Carson City
 Toni North, Tonopah
 Gary Nelson, Carson City
 Dawson Overbay, Reno
 Richard Pelfrey, Reno
 Scott Rogers, Tonopah
 Justin Volsko, Reno

Thanks for Serving!

Nancy Jordt, 10 years, Elko
 Bennett Sadleir, 28 years, Elko



Centerline is published by The Nevada Department of Transportation

Meg Mincolla
 Public Information Officer
 1263 South Stewart Street
 Carson City, Nevada 89712
 (775) 888-7172

Governor Jim Gibbons
 Transportation Board Chairman

Members:

Brian K. Krolicki
 Lieutenant Governor
 Catherine Cortez Masto
 Attorney General
 Kim Wallin
 State Controller
 Jim Thornton
 Tom Gust
 Fr. Caesar Caviglia

Susan Martinovich, P.E.
 Director
www.nevadadot.com



News stories may be reproduced with credit to Nevada Department of Transportation.



NDOT WELCOMES NEW DIRECTOR

Susan Martinovich to Head Agency



Susan Martinovich

Susan Martinovich, P.E., will bring nearly 25 years of NDOT transportation expertise as Nevada Department of Transportation's new director.

Becoming familiar with NDOT operations as rotational engineer, Martinovich soon moved up to bridge and principal design engineer, responsible for many of the state's freeways now under construction. She then served as NDOT assistant director of engineering, overseeing all preconstruction activities before being appointed deputy director in 2003.



Former NDOT Director Jeff Fontaine

Now as director, Martinovich looks forward to working with all NDOT team members to further the department's customer-friendly focus through funding, delivery, safety and communication. Working with Governor Gibbons and other elected officials to develop funding solutions for a projected year 2015 \$3.8 billion deficit is one primary goal. Other objectives to continue the department's record of success include leading all NDOT employees to remain proactive in job duties, further developing collaborative road safety strategies and expediting

business practices to ensure timely projects.

"We have over 1,700 of the finest men and women in this state working together," the new director said. "I thank every one of them for their hard work and dedication, and look forward to continuing on our way to increased efficiency."

Former NDOT assistant director of engineering Scott Rawlins, P.E., will move to deputy director/chief engineer.

Jeff Fontaine – 11-1/2 Years of NDOT Success

Martinovich replaces Jeff Fontaine, P.E., who recently retired to serve as executive director of the Nevada Association of Counties.

Fontaine first joined NDOT as deputy director. After being appointed director in June 2003, Fontaine and all of NDOT responded to the needs of the nation's fastest-growing state with Nevada's largest highway construction program.

Before retiring, the director thanked all NDOT team members for the accomplishments and dedication during his 11 1/2 years as deputy director and director. "In short, you have made NDOT the best state department of transportation in the nation," Fontaine explained, noting NDOT's smoothest roads and best bridges ratings. "I feel very good knowing you will continue the department's important mission."

BUILDING BRIDGES TO THE TOP



Nevada bridges, such as those that are part of the Henderson Spaghetti Bowl above, were recently named the nation's best.

Building bridges isn't easy. Maintaining them may be even more difficult. But the hard work of the department's dedicated bridge engineers recently brought Nevada recognition as having the nation's top bridges.

A Better Roads magazine 2006 survey shows only four percent of Nevada's 1,772 state, county and city bridges being function-

ally obsolete or structurally deficient, compared to a national average of 25 percent. Calculating just the 1,075 state-operated bridges, Nevada ties Arizona at the top with three percent of bridges not up to par, compared to a 22-percent national average.

Using Federal Highway Administration classifications, the survey defines structurally deficient bridges as closed, restricted to light vehicles or requiring immediate rehabilitation. Functionally obsolete bridges are deficient in carrying capacity, clearance or alignment. The term "deficient bridge" is used to describe bridges in need of major rehabilitation or even replacement. It does not mean the bridge is in danger of collapse.

"Dedicated, quality efforts by our bridge inspection and inventory/management staff have been the key to our success," NDOT Assistant Chief Bridge Engineer Marc Grunert explained. "Our management and district bridge personnel truly care about the job they do, and the safety of all Nevada bridge users."

Those dedicated NDOT bridge professionals perform in-depth inspections every four years, not to mention other routine evaluations and as-needed maintenance inspections, on all bridges in the state, including city and county-maintained structures.

I-580 TO LINK CAPITAL CITY AND BIGGEST LITTLE CITY



I-580 will offer views of Washoe Lake (pictured) as it extends from south Reno's Mt. Rose intersection to the north end of Washoe Valley.

Nevada's busiest rural four-lane highway will be supplemented by a vital new six-lane I-580 freeway linking Reno and Carson City, thanks to a \$393.4 million contract recently awarded to Fisher Sand and Gravel.

As the second phase of the I-580 project, the contract will construct a nearly 8.5-mile freeway, as well as three bridges and two interchanges. It will also complete the Galena Creek Bridge left nearly finished after NDOT and first-phase contractor parted ways.

Extending over the hills just west of the current U.S. 395, the new freeway is expected to divert up to 75% of the 40,000 cars seen daily on U.S. 395. With extensive residential roads intersecting the busy highway, the existing stretch of U.S. 395 has seen 12 fatalities and 327 injury accidents since 2000.

"This highway will be the connection for economic development for years to come," former Governor Kenny Guinn said of the

project's statewide economic impact.

While more expensive projects have been divided into separate contract phases, I-580 is the largest single contract in NDOT history. Originally projected at \$310 million in 2003, recent double-digit hyperinflation was an unforeseen element that caused project costs to rise.

"No one could have predicted the type of hyperinflation we've seen, with Hurricane Katrina, steel market fluctuations and other factors," former NDOT Director Jeff Fontaine explained. "Industries nationwide are struggling with the same situation."

As the sole large new northern Nevada road project, I-580 construction will not affect vital ongoing projects in southern Nevada, in which 70% of all state highway funds are utilized.

I-580 Timeline

Construction beginning Jan. 2007. Completion expected in 2011.



NEW NDOT CHIEF CONSTRUCTION ENGINEER BUILDS ON EXTENSIVE CAREER

It takes vision to turn today's transportation needs into the roads of tomorrow. As NDOT's new chief construction engineer, Gary Selmi, P.E., will see those visions into reality.

In his 22-year NDOT career, Gary has risen from rotational engineer to assistant chief construction engineer before recently being

named NDOT chief construction engineer. As chief construction engineer, he now looks forward to using lessons learned while overseeing District 1 super projects to ensure projects are delivered on-time and within specifications through department-wide construction policies, manuals and administration.



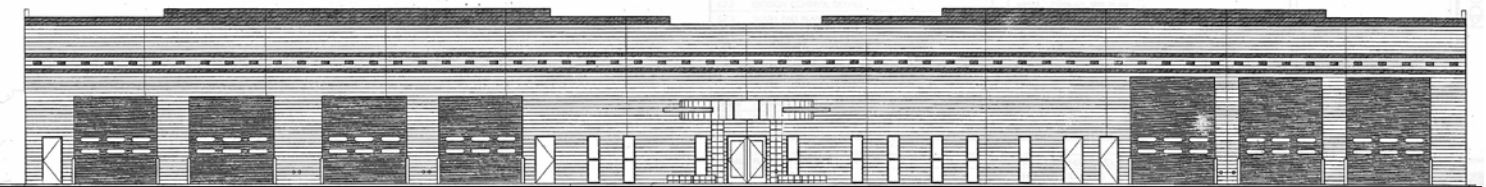
Two Interstate 80 repaving jobs (pictured left) in northeastern Nevada received finishing touches with help of District 3 crews 912 and 918. The stretch of highway winding through Carlin and over the 6,000-foot high Emigrant Pass sees up to 10,000 vehicles a day, much of it vital interstate truck commerce.

PAVEMENT PROGRESS



A \$14.3 million project has widened six miles of U.S. 50 east of Dayton from two to four lanes (pictured right). The area's population is expected by the state demographer to nearly double by 2024.

NEW MAINTENANCE STATION BEGINS CONSTRUCTION



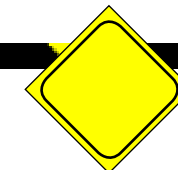
A mock up of the south Las Vegas maintenance station will soon become reality with the station's ongoing construction.

Building a Maintenance Station in Las Vegas

Construction has begun on a new south Las Vegas maintenance station that will rise to meet the needs of an ever-growing southern Nevada.

Just off of I-15, the 26,265-square foot concrete block building

will house six crew rooms and other vital vehicle bays, shops, storage and offices. Crews will avoid costly and time-consuming travel by working out of the station before heading for projects on I-15 and other outer areas. The station's new communication system will even integrate with the FAST traffic control system headquartered next door to allow for quick incident response.



SAFETY SIGNS

Don't let personal protective equipment give a false sense of security. Always be safety-aware while working in the office or construction zones.