



NEVADA DEPARTMENT OF TRANSPORTATION

Connecting Nevada

Stakeholder Outreach

August 2012

HDR



Planning Nevada's Transportation Future





PROJECT PURPOSE AND GOALS

- Develop a long-range transportation plan to guide decisions and investments in the future
- Engage and facilitate discussion with varied stakeholders
- Establish policies and guidance for preserving transportation corridors
- Recognizing and encouraging multimodal opportunities
- Linking NEPA and planning

Building On Phase 1



Project Process

Data Collection

- Develop network
- Base mapping
- Existing Studies

Stakeholder Outreach Round One

- Gather ideas
- Identify issues

Travel Demand Model

- Needs Analysis
- Planning linkages

Stakeholder Outreach Round Two

- Share findings
- Validate projects

Connecting Nevada Plan

- Draft Plan
- Public Meeting
- Finalize Plan

JUNE 2011

DECEMBER 2012

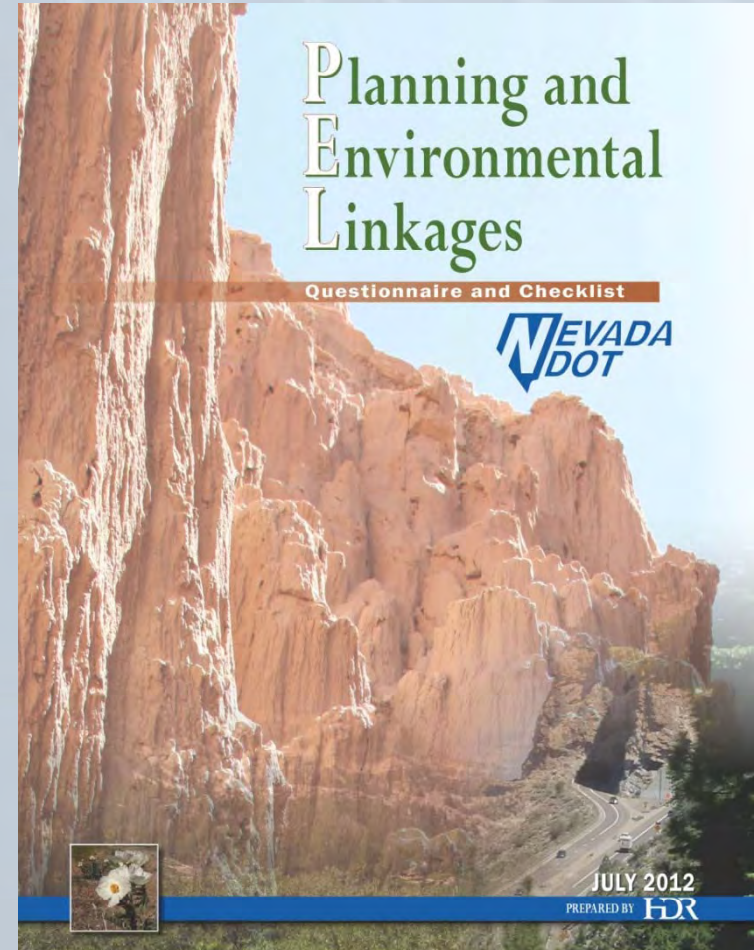


Guidance provided by

- Technical Advisory Committee
 - Department staff; representatives of the Metropolitan Planning Organizations (MPOs); non-NDOT representatives from each NDOT Districts; and others as designated by the Department
- Steering Committee
 - consists of Department and high priority agency representatives who will oversee Phase II
- Stakeholders like you!

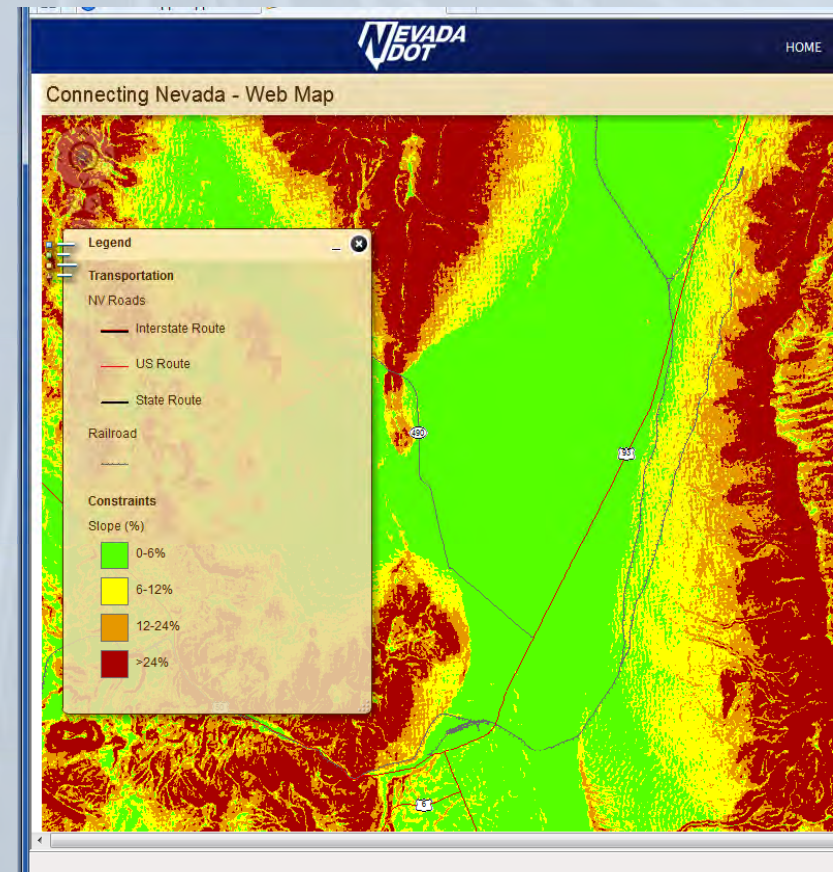
Tools being developed include

- Policy guidance, such as planning and environmental linkages
 - integrating planning and environmental requirements



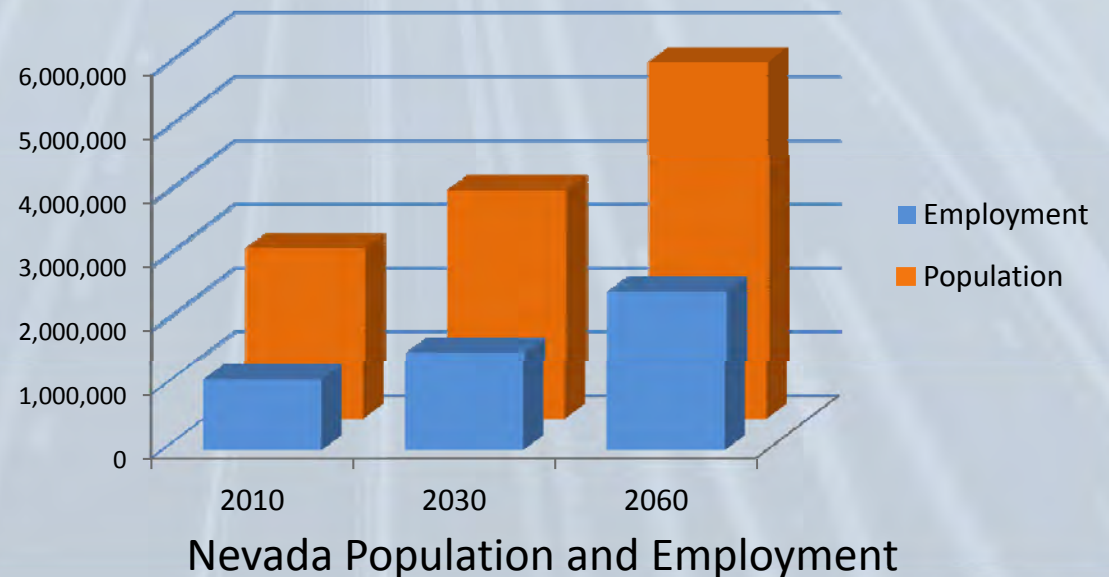
GIS Suitability Analysis

- Constraints analysis to identify suitable land for development
- Run what-if scenarios to identify future transportation corridors



Socioeconomic Forecasts

- Compile population and employment projections through 2060



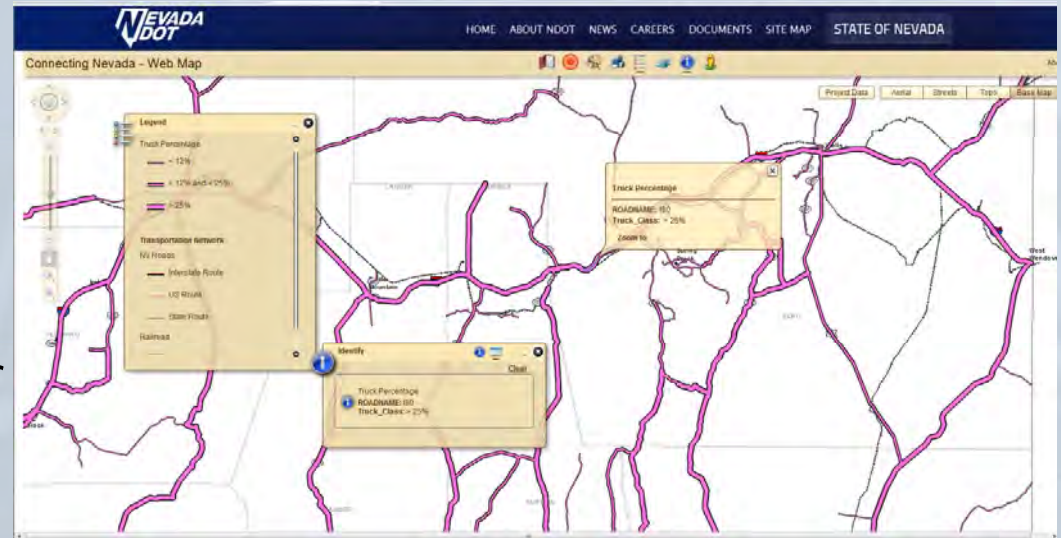
Nevada	2010	2030	2060
Population	2,663,000	3,588,000	5,673,000
Employment	1,109,000	1,551,000	2,614,000

Source: HDR, 2012

Sustaining Existing Corridors and Preserving Potential Corridors for NDOT's Future

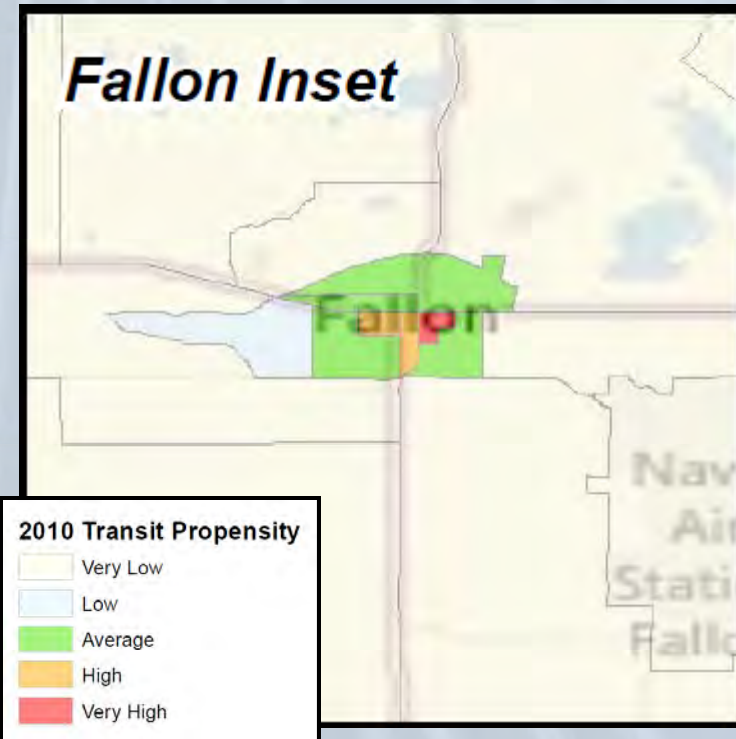
Web Mapping

- Web mapping tool to share data with stakeholders
- QC and review alternatives over the web from your desktop browser
- Easy to use tool, similar to Google maps



Transit propensity

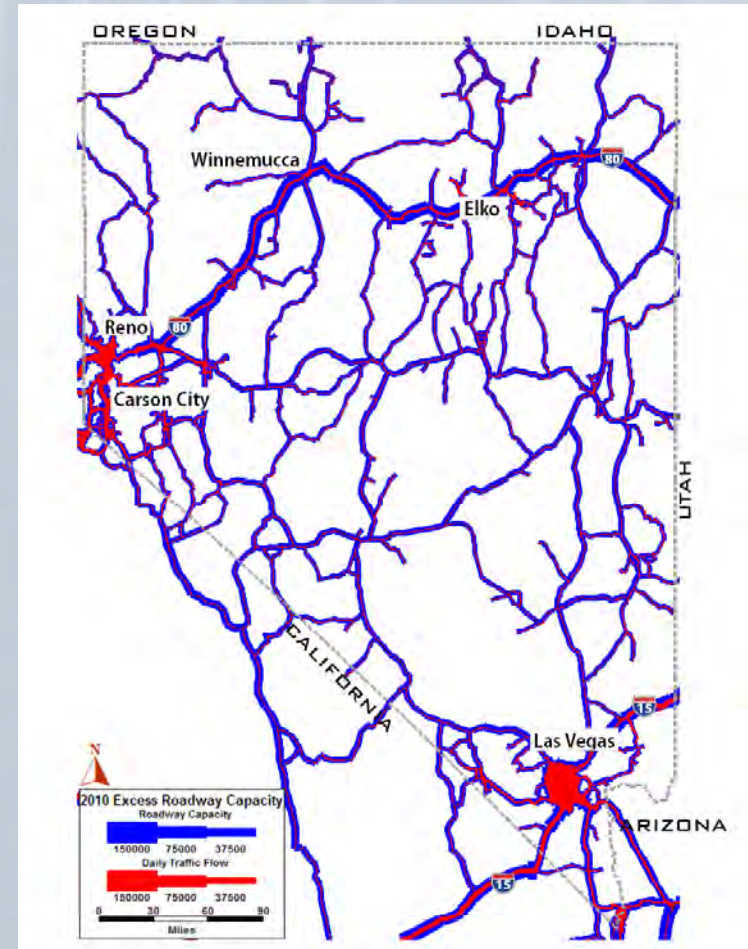
- Transit propensity analyses identify geographical areas that have the potential to support transit use



Standout Urban Areas	Standout Rural Areas	
•Las Vegas	•Battle Mountain	•Fallon
•Carson City	•Elko/Spring Creek	•Gardnerville Ranchos / Indian Hills
•Reno	•Ely/McGill	•Pahrump

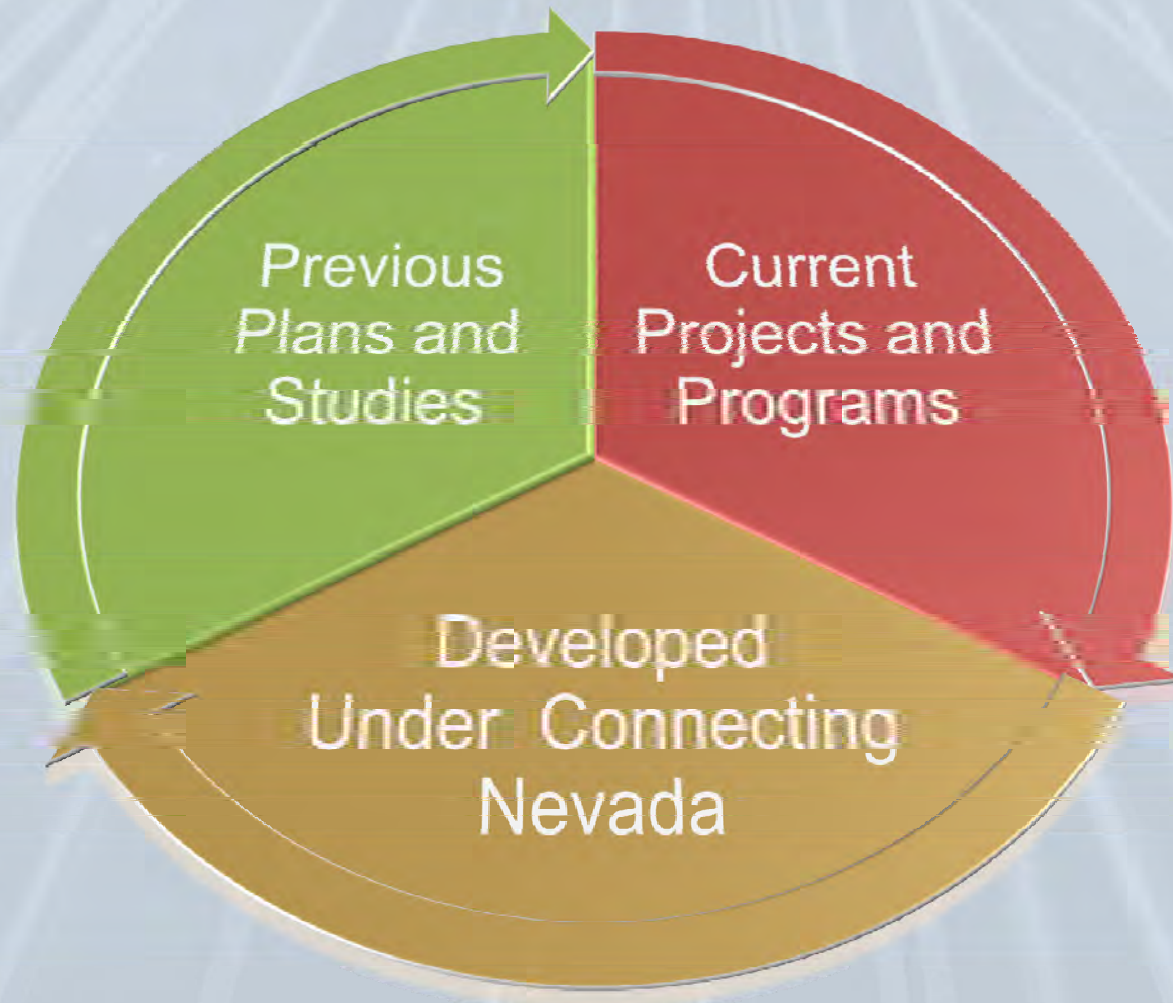
Travel Demand Model

- Statewide travel demand model, looks beyond borders at influence of neighboring states
- Analyze traffic growth in key corridors
- Evaluate improved regional connections



2010 Roadway Capacity

Identify Transportation Needs



How to Get Additional Information

- Visit Connecting Nevada website at <http://www.connectingnevada.org/>
- Project contacts:

Jason Van Havel

NDOT Project Manager
1263 South Stewart Street
Carson City, Nevada 89712
(775) 888-7119
jvanhavel@dot.state.nv.us

Tim Mueller

NDOT Project Manager
1263 South Stewart Street
Carson City, Nevada 89712
(775) 888-7351
tmueller@dot.state.nv.us

Lolene Terry

Consultant Project Manager
HDR Engineering, Inc.
7180 Pollock Drive, Suite 200
Las Vegas, NV 89119
(702) 938-6002
lolene.terry@hdrinc.com



-QUESTIONS?-

