



Sustaining Existing Corridors and Preserving Potential Corridors for NDOT's Future



Planning Our Transportation Future Phase II

NEVADA DEPARTMENT OF TRANSPORTATION

December 2011

www.connectingnevada.org

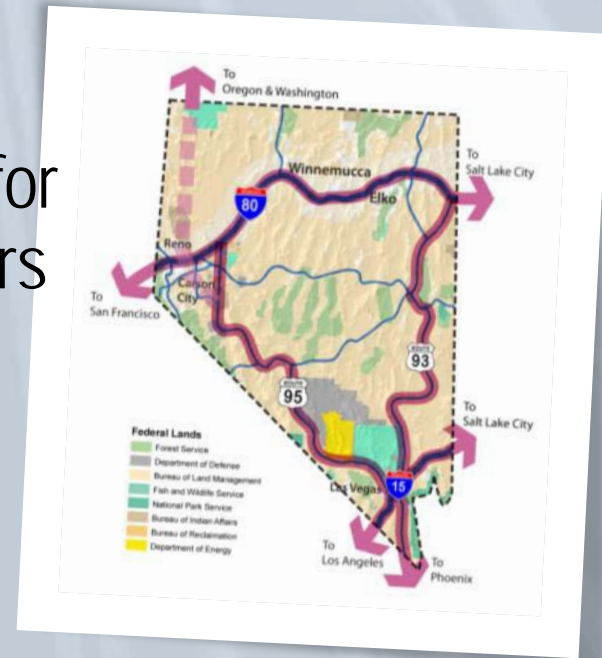


Today's Activities

1. Provide project background
2. Break into working groups
3. Discuss specific questions
4. Provide opportunity for dialog
5. Report back to the larger group our key points
6. Conclude

PROJECT PURPOSE AND GOALS

- Develop a long-range transportation plan to guide decisions and investments in the future
- Engage and facilitate discussion with varied stakeholders
- Linking NEPA and Planning
- Establish policies and guidance for preserving transportation corridors
- Recognizing and encouraging multimodal opportunities
- Building on Phase I





Stakeholder Outreach

- Engage stakeholders in a discussion about Nevada's transportation future
- Inform about the project and process
- Solicit your thoughts, concerns, and ideas
- Identify specific areas and issues to address
- Provide information on how to stay involved

Why your input is important

- Transportation affects each of us every day
- Economic development and diversification are impacted by the transportation system

We have an opportunity today to shape the future of our transportation system





Project Guidance

Technical Advisory Committee (TAC)

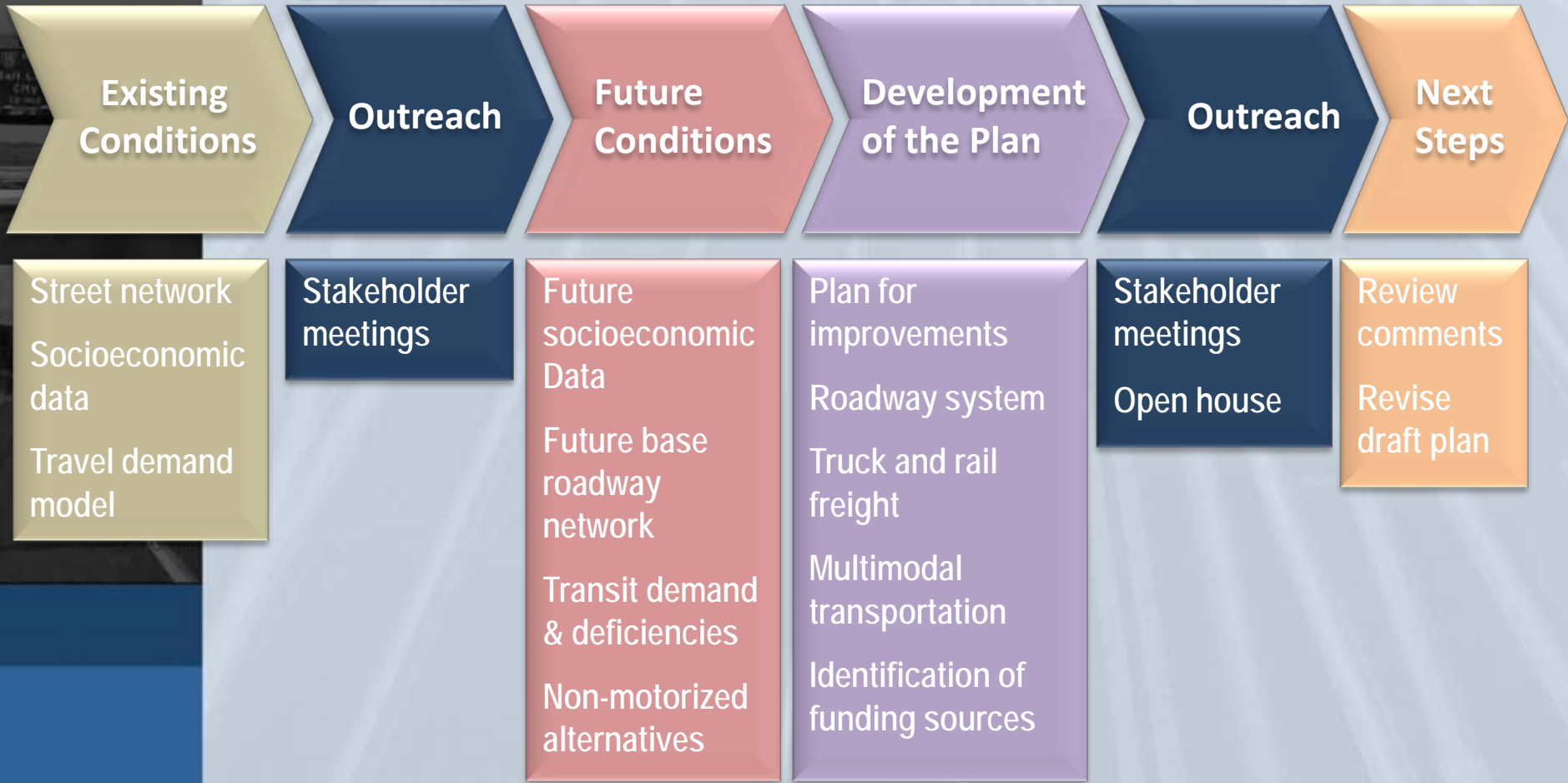
- The TAC is comprised of Department staff; representatives of the four Metropolitan Planning Organizations (MPOs); non-NDOT representatives from each of the three NDOT Districts

Steering Committee (SC)

- The SC consists of NDOT staff who will oversee Phase II tasks, direct the project team, and advise on work plan components

Project Progress

We are here





Public Involvement

- Public Involvement Plan
- Identify community presentation and speaking opportunities
- Connecting Nevada project website
- Public information meetings
 - Two meetings held during final 6 months of project to present outcomes and findings
 - One in urban area (Las Vegas or Reno) and one in rural area of the State



Stakeholder Involvement

- Convene stakeholders that represent a broad cross section of the community
- Stakeholder Meetings
 - 1st Round (November 2011) – get stakeholders involved and solicit input
 - 2nd Round (June 2012) – validating input and presenting initial recommendations

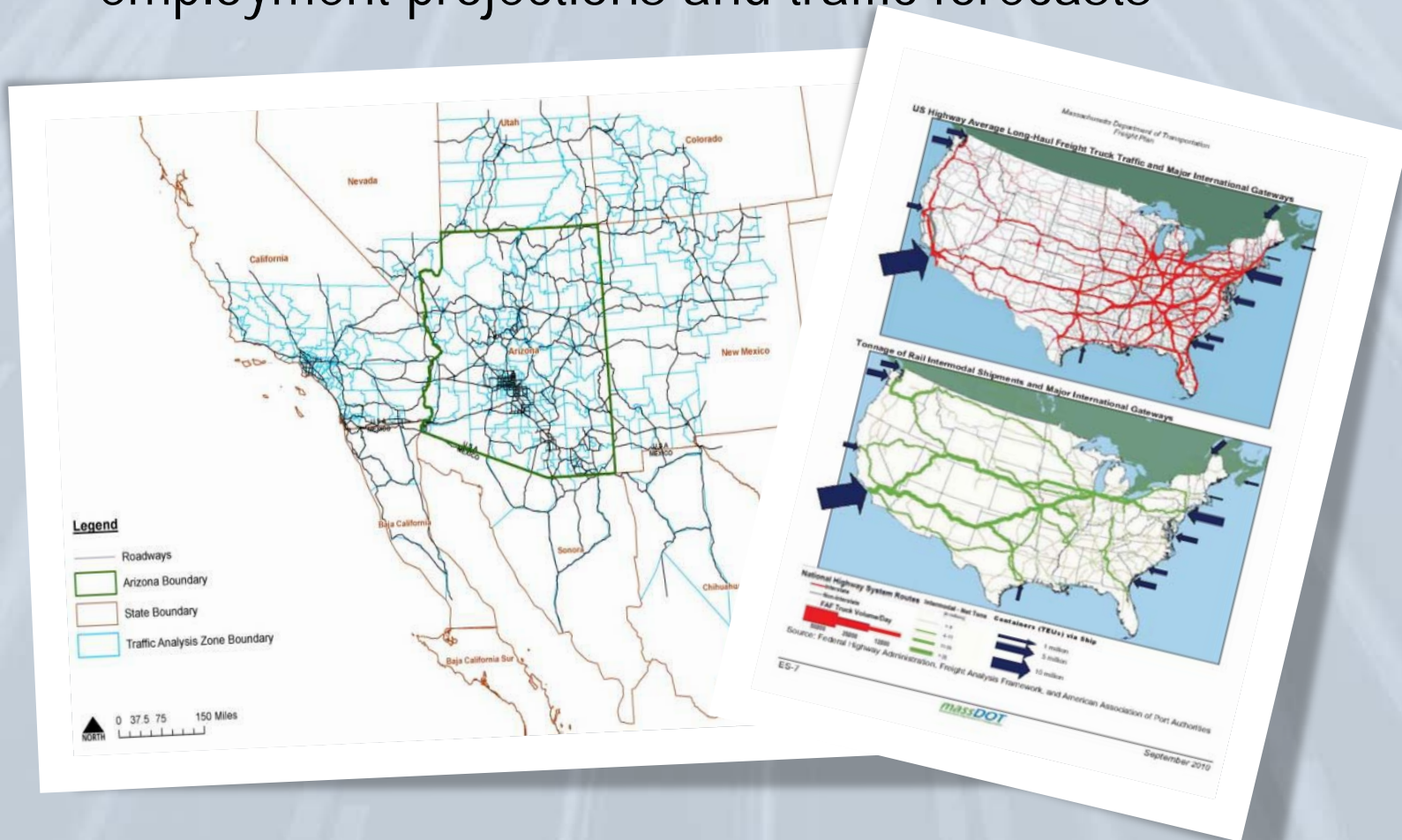
Travel Demand Analysis

- Data reconnaissance
- Base year passenger (non-commercial vehicle) and commercial vehicle model development
- Short-, medium-, and long-range population and employment projections and traffic forecasts
- Conduct training seminar for NDOT staff on the travel demand model tool



Forecasting Travel Demand

- Short-, medium-, and long-range population and employment projections and traffic forecasts



A Plan that Includes Transit Options

- Identify potential transit supportive areas through a state-wide transit propensity analysis
- Define appropriate transit options to improve intrastate travel
- Leverage existing local transit investments





Project Outcomes

- Long-range multimodal transportation plan that guides decisions and investments
- Statewide travel demand model
- Stakeholder engagement and ongoing coordination and involvement
- Basis for future National Environmental Policy Act (NEPA) projects
- Establish policies and guidance for preserving transportation corridors



Resources to Assist You Today

- Exhibits around room
existing conditions, provided for reference
- Base Map
at each table for you to mark up with your ideas
- Regional Map
at each table for context – how does Nevada relate to the region?
- Nevada Department of Transportation staff
here to provide answers to your specific questions
- Consulting team
facilitate discussions and record your ideas

Questions



Visit the project web site at
www.connectingnevada.org

Workshop Question #1

- What improvements are needed to existing roads and transportation services?



Visit the project web site at
www.connectingnevada.org

Workshop Question #2

- What are the regional environmental or conservation issues that the Plan must address?



Visit the project web site at
www.connectingnevada.org

Workshop Question #3

- What are the biggest challenges facing mobility in the state?
 - What are the biggest opportunities?



Visit the project web site at
www.connectingnevada.org

Workshop Question #4

- From your perspective, what are the regional multimodal and commercial transportation issues that the study must address?
 - What types of issues are there in accommodating commercial truck traffic?



Visit the project web site at
www.connectingnevada.org

Workshop Question #5

- When you look to the future (2050 and beyond) what are the growth/developments, business, and global trends or other economic changes that you see occurring?
 - How should regional transportation planning address these issues?



Visit the project web site at
www.connectingnevada.org