

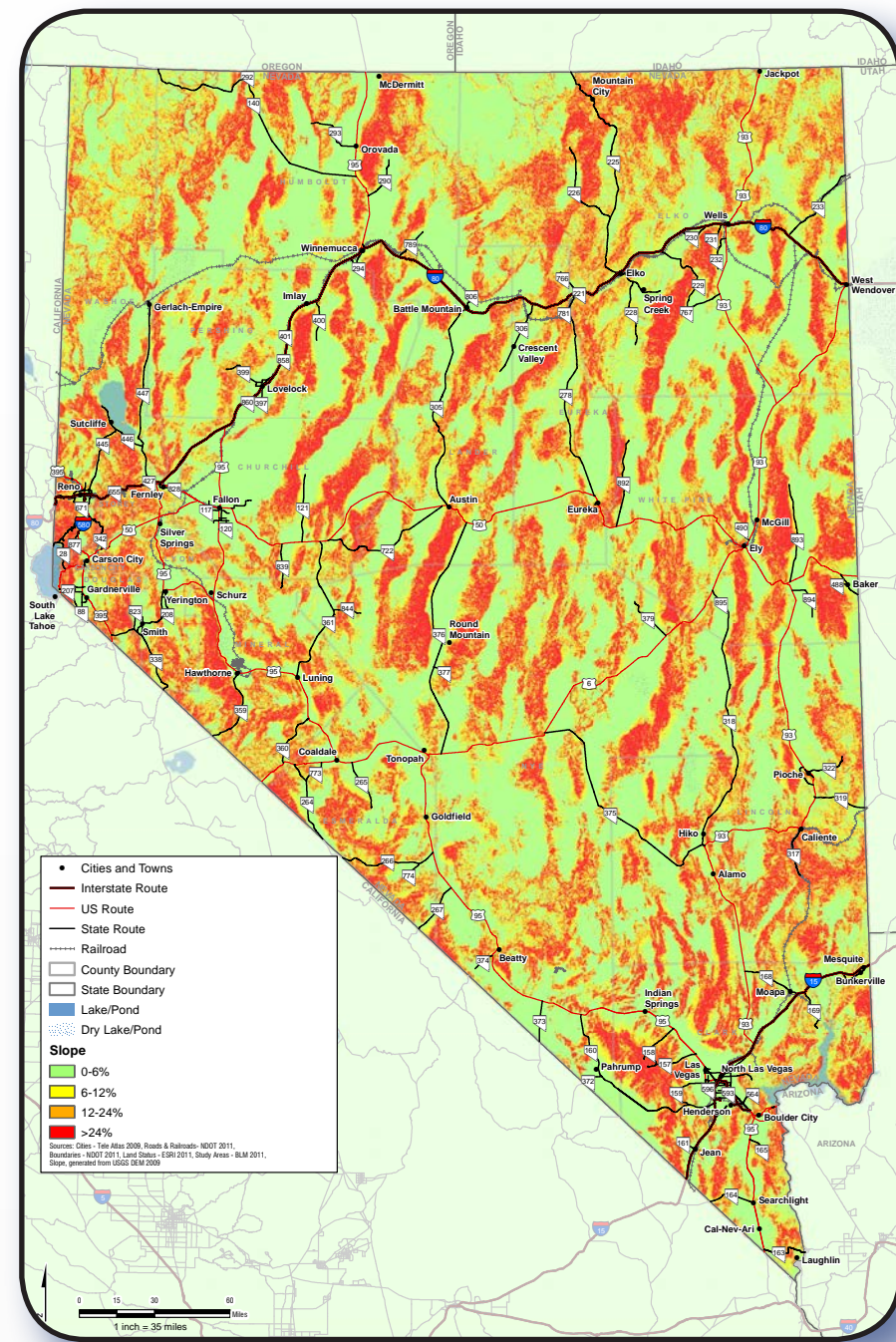
What is it? Analysis that allows the consideration of various factors to determine the appropriateness of an action.

What goes into it?

How we apply it?

Slope

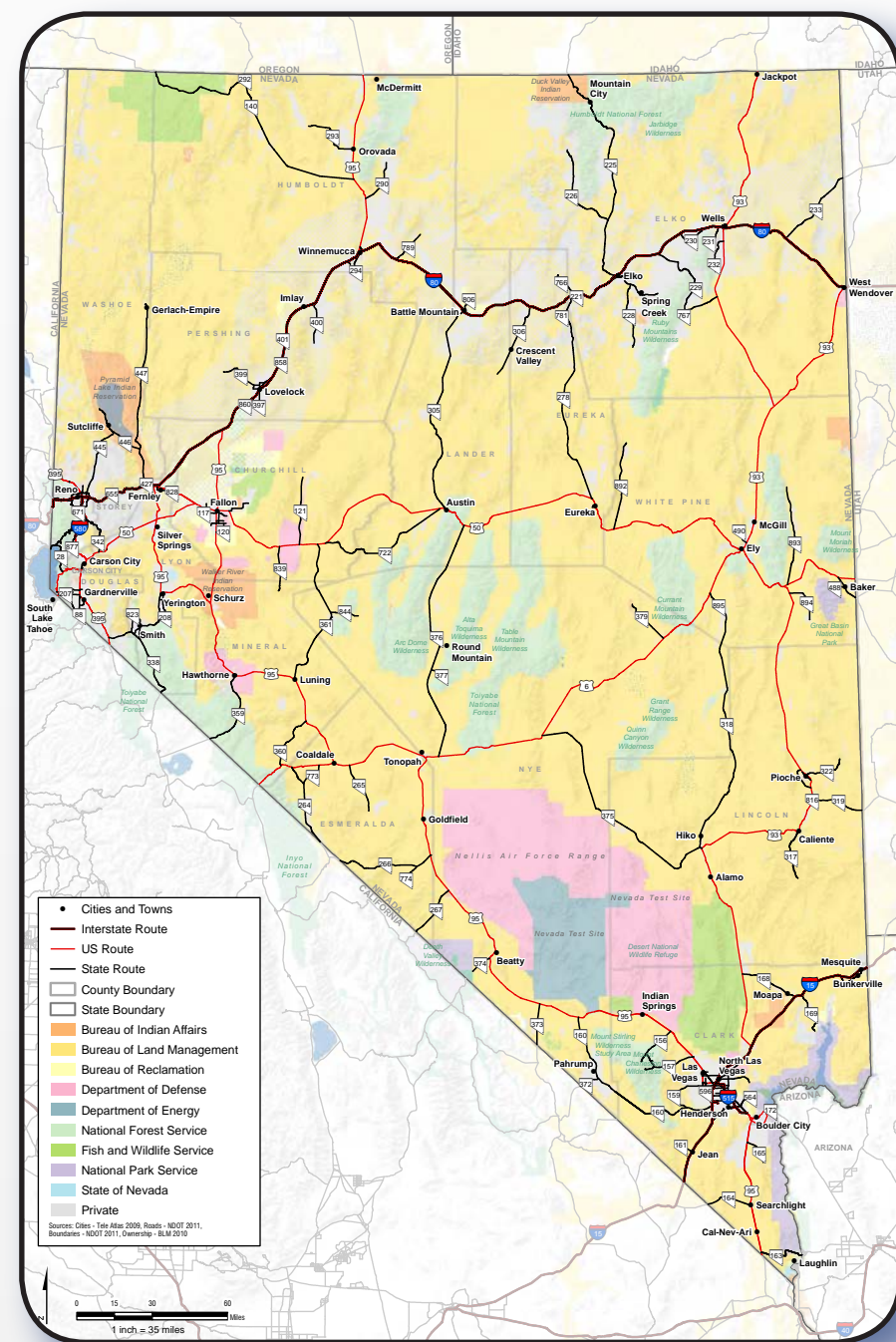
- up to 12 percent—considered fully developable
- up to 24 percent—partially constrained
- slopes above 24 percent—considered not developable



Source: U.S. Geological Survey (2005)

Land ownership

- Nevada encompasses nearly 71 million acres
- over 60 million acres (approximately 87 percent) are under federal administration
- only about 13 percent of Nevada's land is in private ownership, less than any other state



Source: Bureau of Land Management (2010)

Environmental Constraints

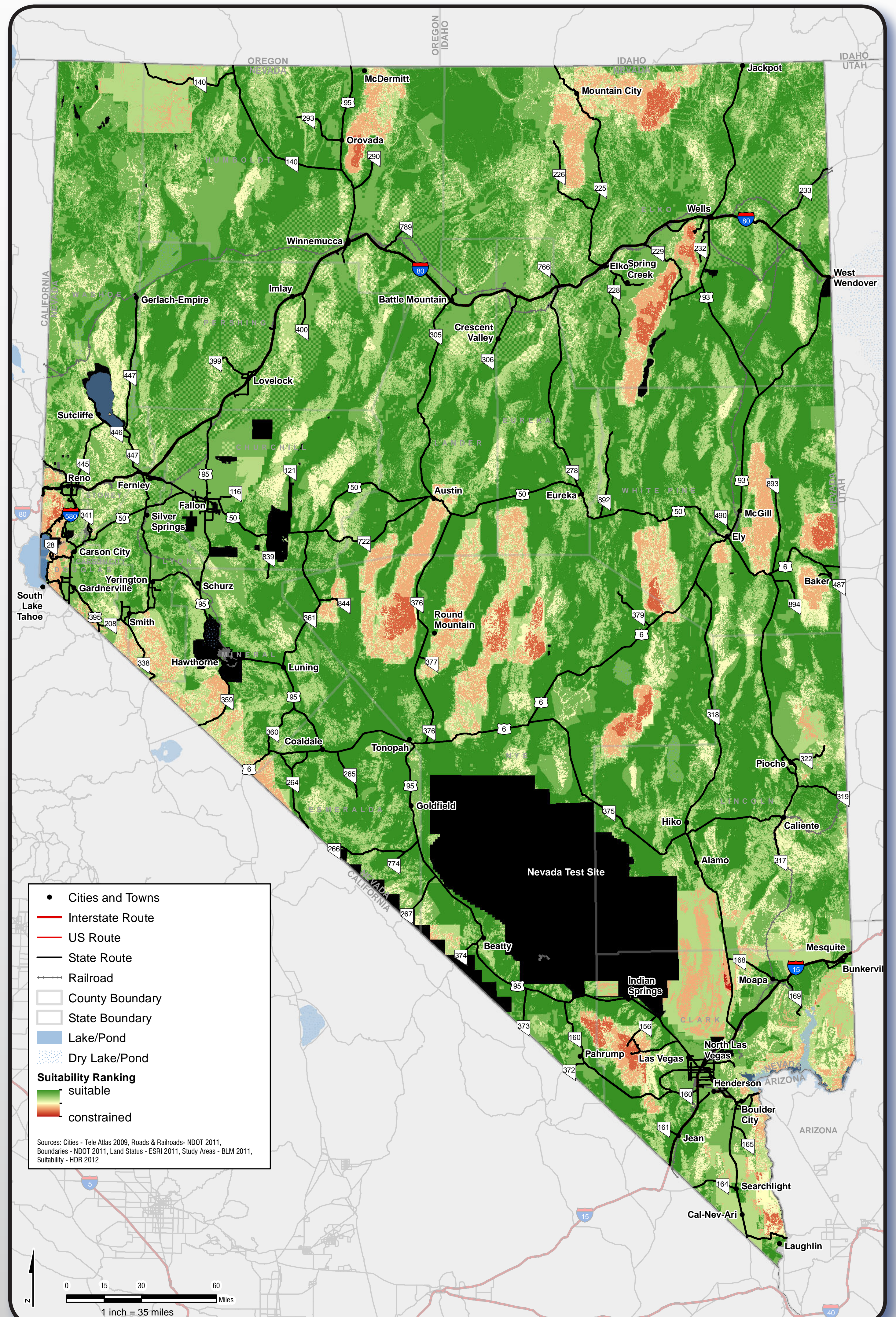
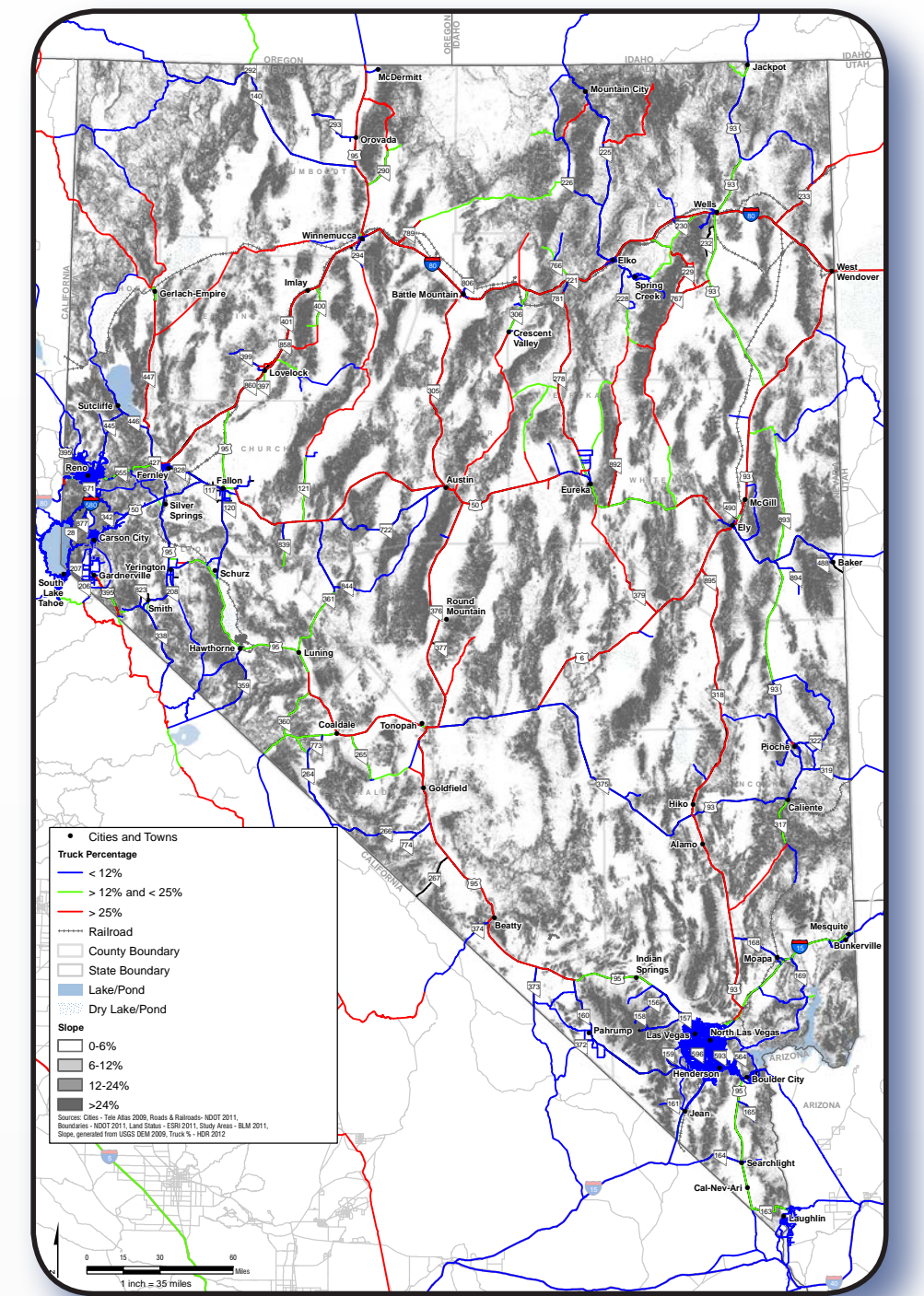
Factors considered as environmental constraints include:

- wetlands and Waters of the U.S.
- areas of critical environmental concern
- critical habitat
- wilderness and park areas
- wildlife refuge
- national/state forest and park
- cultural resources



Source: Areas of Critical Environmental Concern, Bureau of Land Management (2007); Critical Habitat, U.S. United States Fish and Wildlife Service (2010); Elevation, U.S. Geological Survey (2005)

When looking at the percent of truck traffic overlaid on a map of slope—we can intuitively see where climbing or passing lanes may be needed.



Source: HDR (July, 2012)