

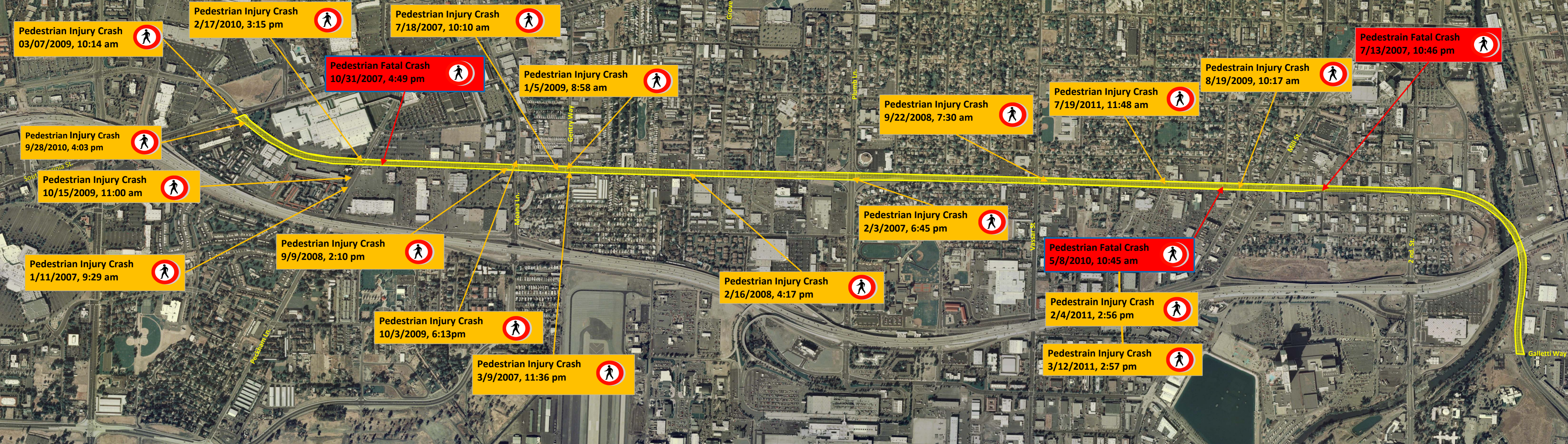
Pedestrian Crashes

October 1, 2006

to

September 30, 2011

ALL INFORMATION PRESENTED IS PRELIMINARY
SUBJECT TO REVISION



SR 667

KIETZKE

LANE

SAFETY MANAGEMENT PLAN

zero Fatalities

Drive Safe Nevada

Bicycle Crashes

October 1, 2006

To

September 30, 2011

ALL INFORMATION PRESENTED IS PRELIMINARY
SUBJECT TO REVISION



SR 667

KIETZKE

LANE

SAFETY MANAGEMENT PLAN

zero Fatalities

Drive Safe Nevada