

SR 667



**zero** Fatalities®

*Drive Safe Nevada*

# Public Information Meeting

February 28, 2012

*All information presented is preliminary.  
subject to revision*



SR 667



# Commenting on this Study:

- A court reporter will be recording the presentation and is available to take comments before and after the presentation.
- Fill out a comment form, included in your handout packet and place it in the comment box.
- Submit comment forms by mail to: Jim Ceragioli, Nevada Department of Transportation, 1263 S. Stewart St., Carson City, NV., 89712.
- Via email to [info@dot.state.nv.us](mailto:info@dot.state.nv.us) (reference Kietzke Lane Safety Management Plan) in your correspondence.
- ***Comments will be accepted until 5:00 p.m. Friday, March 16, 2012***

SR 667

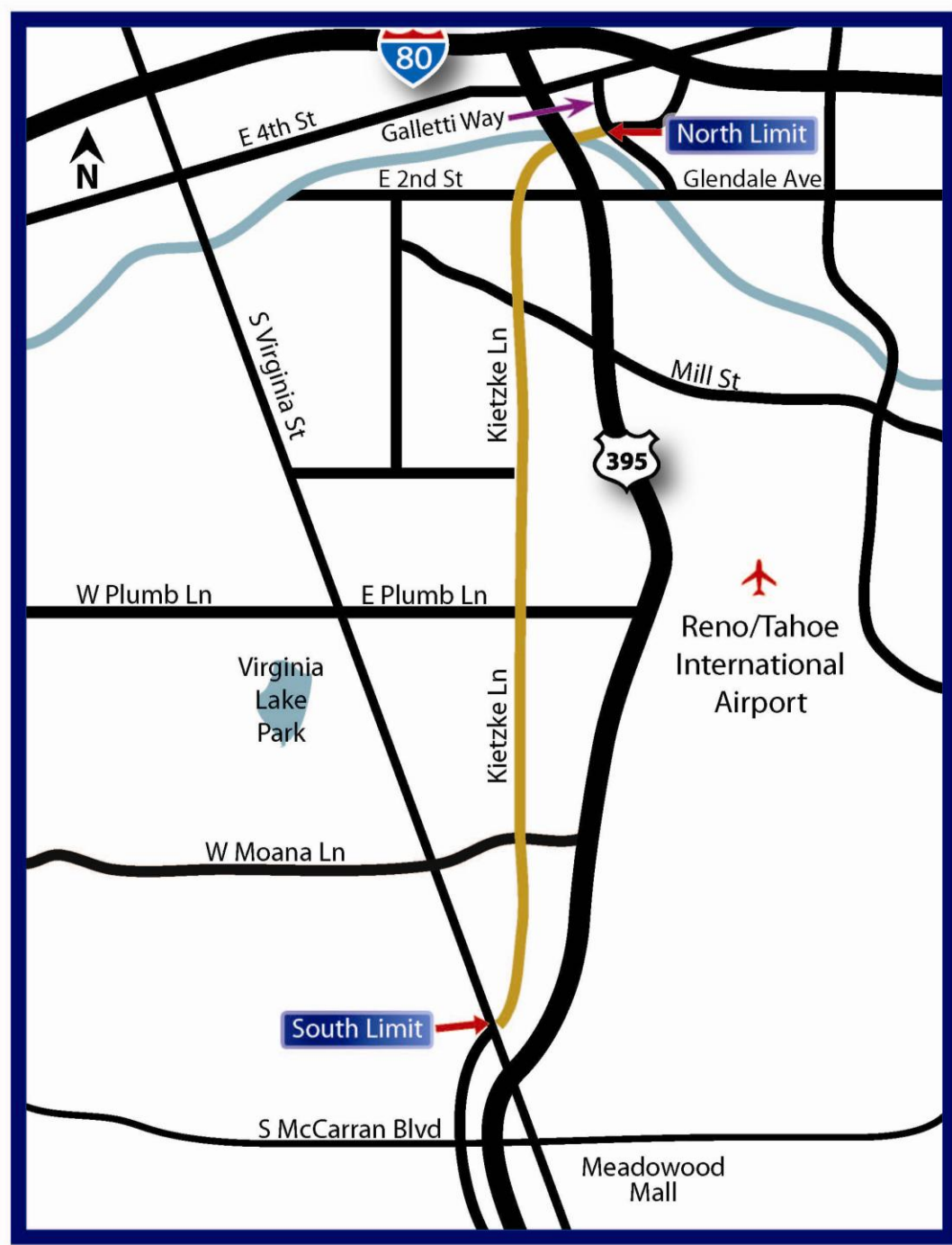


# KIETZKE LANE

SAFETY MANAGEMENT PLAN

**zero Fatalities**  
*Drive Safe Nevada*

## Project Limits



SR 667



# Why Kietzke Lane?

**zero Fatalities**<sup>®</sup>  
*Drive Safe Nevada*

## NEVADA STRATEGIC HIGHWAY SAFETY PLAN

The Nevada Strategic Highway Safety Plan identifies five critical emphasis areas where there are a relatively high number of traffic crashes:



Seat Belts



Impaired  
Driving



Lane  
Departures



Intersections

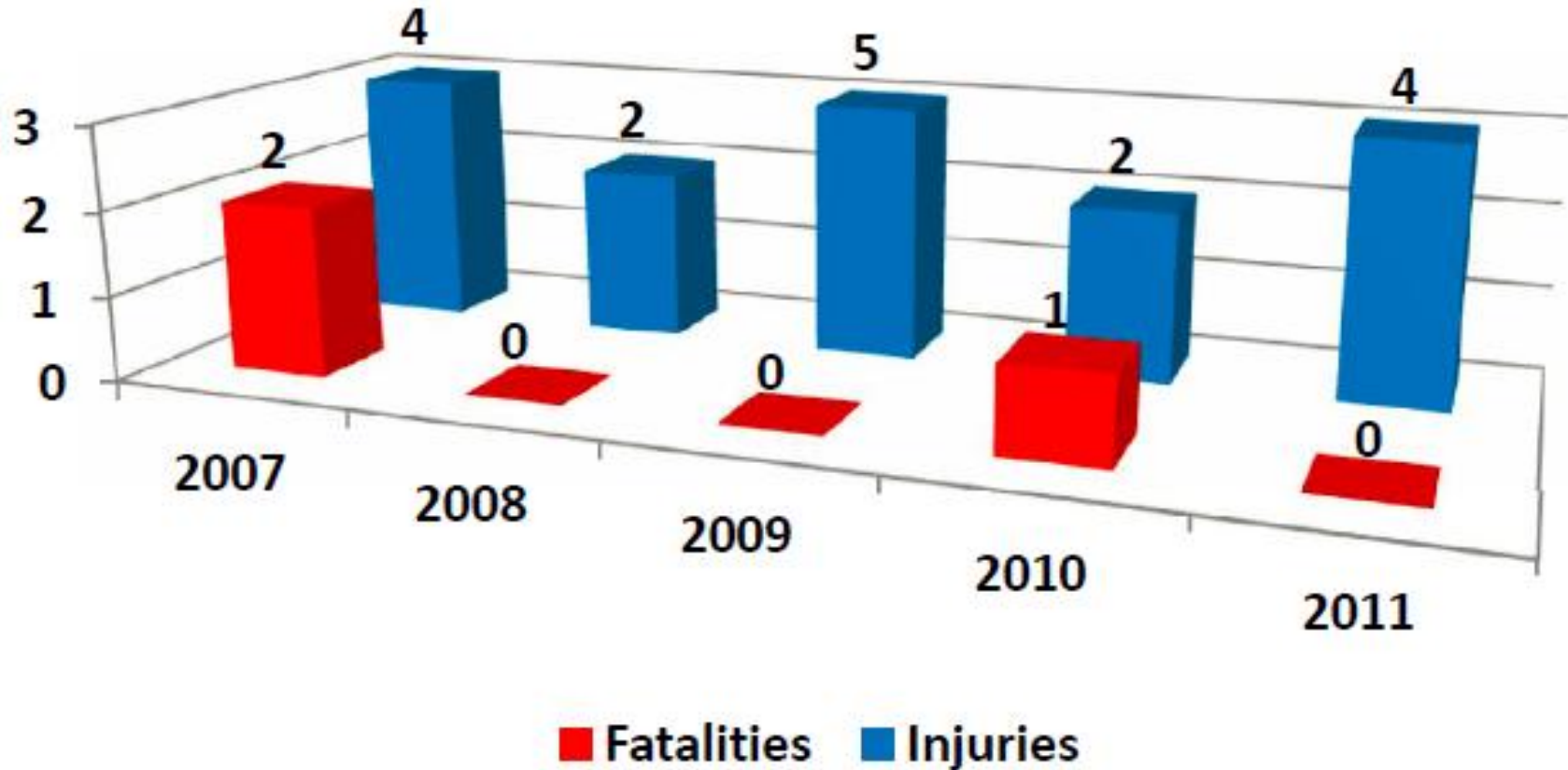


Pedestrians



# Crash Data

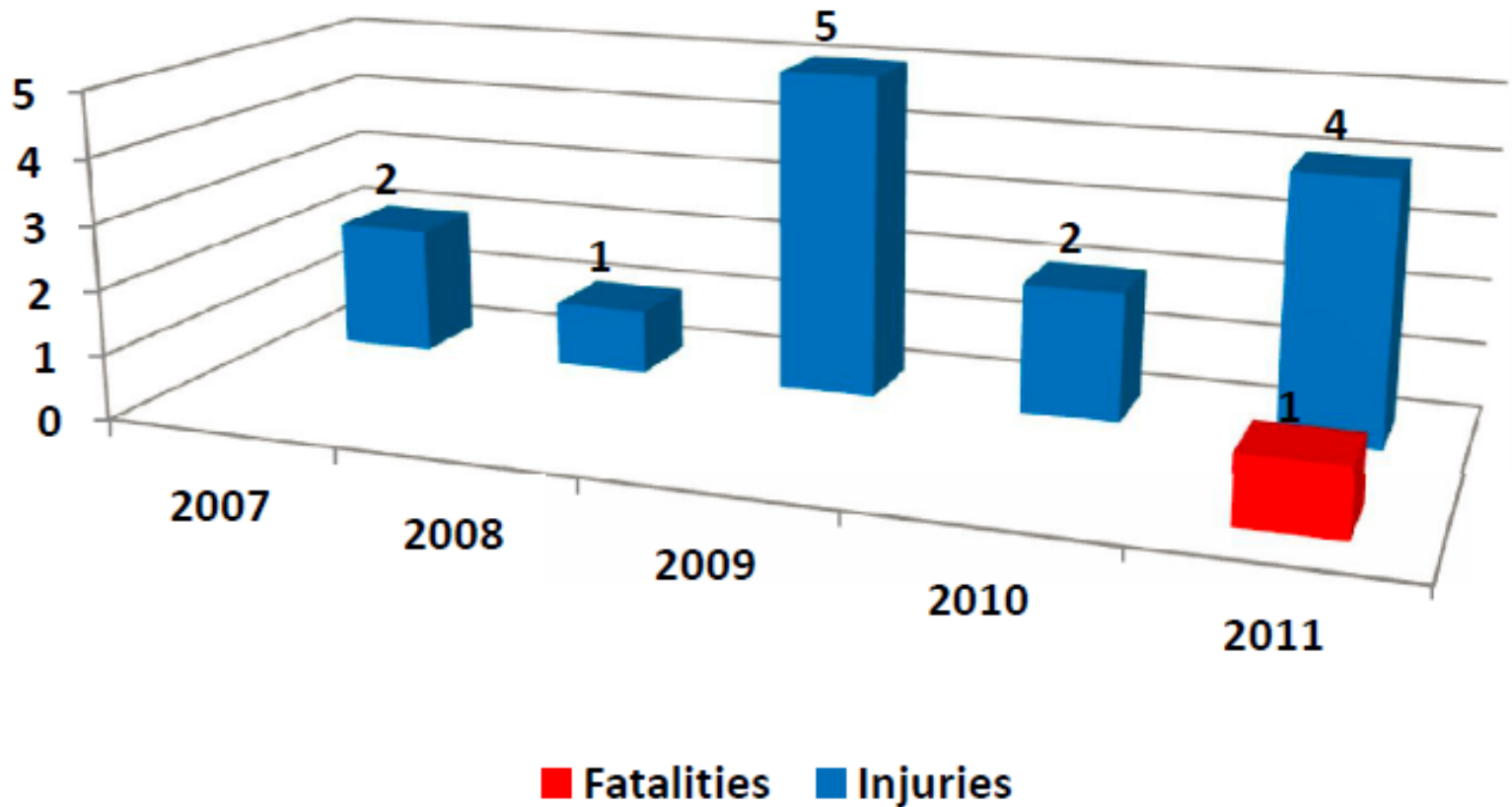
## Pedestrian Crashes





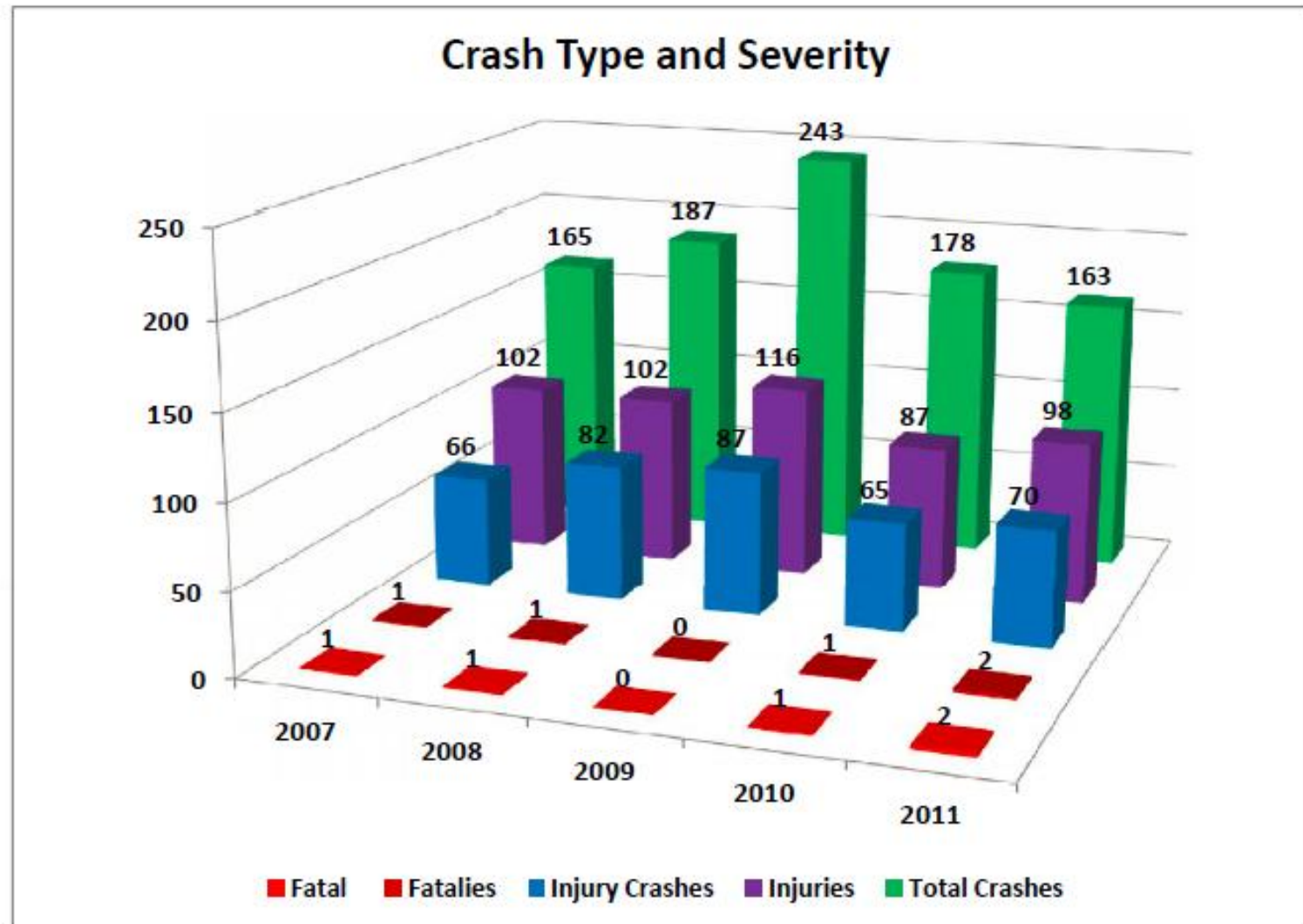
# Crash Data

## Bicycle Crashes



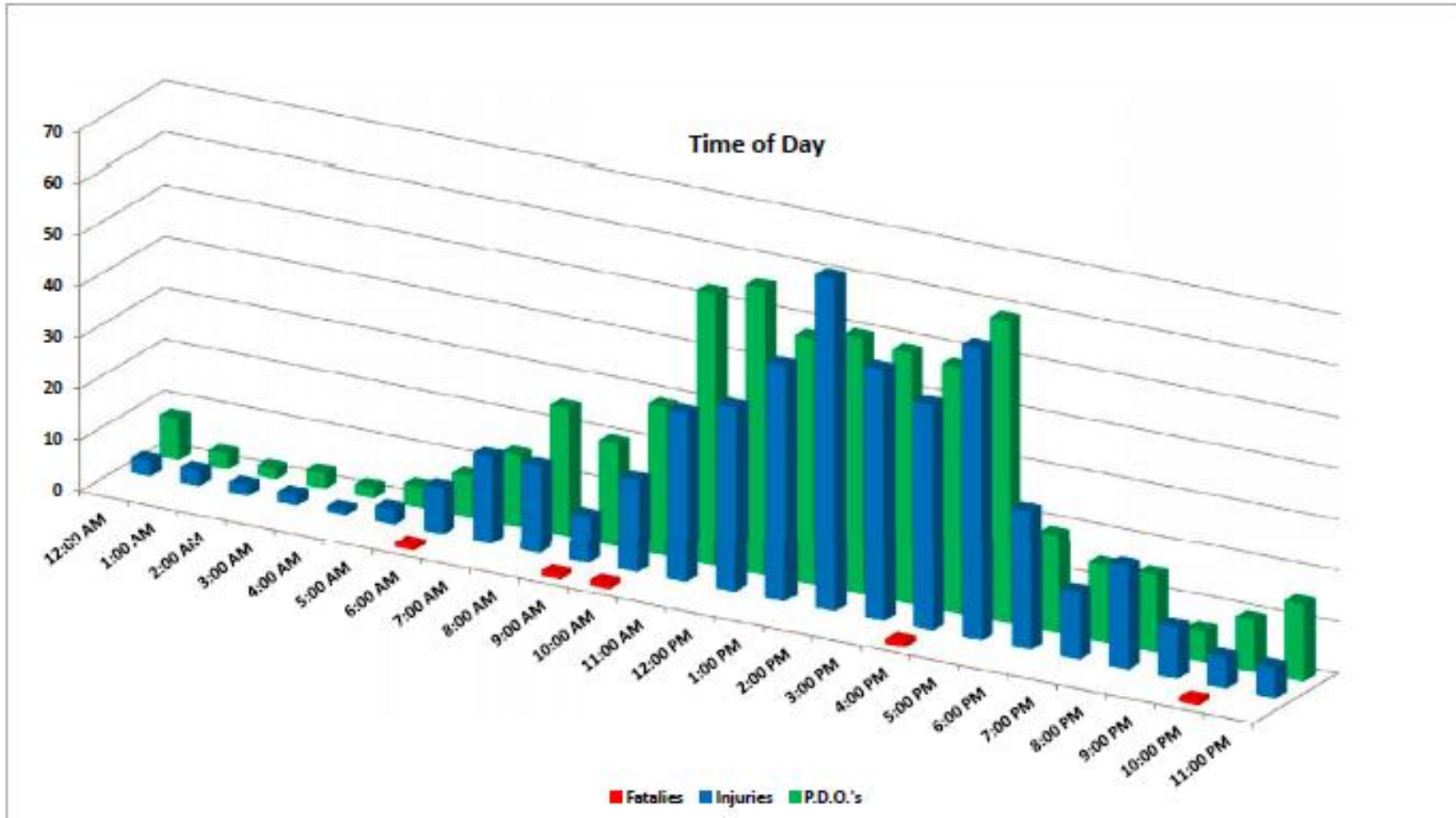


# Crash Data





# Crash Data





SR 667



# Purpose & Need for this Study

- This is a diverse corridor (industrial, commercial, schools, residential) with a number of opportunities to enhance safety
  - Significant number of injury crashes
  - Substantial road use by pedestrians, bikes and vehicles
  - Numerous driveways

SR 667



# Issues and Concerns on Kietzke Lane

- Pedestrian Crossings and Sidewalks
- Bicycle Operations
- Street Infrastructure
- Sight Distance Issues
- Access Management
- Street Lighting
- Bus Stops

SR 667



# Project Objectives

- Review existing traffic counts and crash data
- Analyze safety issues and previous road safety audits for this corridor
- Analyze corridor data
- Review policies, plans and studies
- Develop a list of short and long-term, project recommendations to enhance safety on Kietzke Lane



# Strategic Highway Safety Plan Partnering Agencies

Transportation and safety advocates across the state cooperatively developed strategies to cut traffic deaths and injuries in the critical emphasis areas in half by 2030. With the Governor and the Nevada State Transportation Board's endorsement, transportation, law enforcement, medical and safety stakeholders across the state are following the strategies to reduce traffic injuries and save lives.

AAA	Henderson Police Department	Northern Nevada DUI Task Force
Administrative Offices of the Courts	Jacobs Engineering	Nye Community Coalition
American Traffic Safety Services Association	Kimley-Horn and Associates, Inc.	Orth-Rodgers and Associates
Atkins	Las Vegas Metropolitan Police Department	Regional Transportation Commission of Southern Nevada
Boulder City Police	Lincoln County Sheriff's Department	Regional Transportation Commission of Washoe County
Cambridge Systematics	Look Out Kids About	Safe Communities Partnership
Carson City Public Works	National Highway Safety Administration	Sigma Engineering Solutions
City of Fernley	Nevada Association of Counties	Southern Nevada Health District
City of Henderson	Nevada Department of Education	Sparks Kiwanis
City of Las Vegas	Nevada Department of Transportation	Sparks Police Department
City of North Las Vegas	Nevada Department of Public Safety	Stop DUI
City of Sparks	Nevada Department of Motor Vehicles	Washoe County Sheriff's Office
Clark County Coroner's Office	Nevada Department of Health and Human Services	University Medical Center of Southern Nevada
Duckwater Tribal Police	Nevada League of Cities	University of Nevada, Las Vegas School of Medicine
Elko County Sheriff's Office	Nevada Sheriffs and Chiefs Association	University of Nevada, Las Vegas Transportation Research Center
Federal Highway Administration (FHWA)		Western Nevada College Drivers Education
Federal Motor Carriers		
HDR Engineering, Inc.		

SR 667



# Nine Proven Crash Countermeasures



- Roundabouts
- Corridor Access Management
- Signal Backplates with Retroreflective Boards
- Rumble Strips and Stripes
- Enhanced Signing and Surfaces for Horizontal Curves
- Safety Edge
- Median and Pedestrian Crossing Islands
- Pedestrian Hybrid Beacons
- Road Diet (Roadway Reconfiguration)

<http://safety.fhwa.dot.gov/policy/memo071008/>





# Project Schedule

- December 2011 – March 2012:  
*Data Collection & Analysis*
- March 2012 – August 2012:  
*Develop Safety Recommendations*
- Winter 2012:  
*Final Report Complete*

SR 667



# Next Steps

- Evaluate
- Prioritize
- Funding
- Implement

SR 667



# Commenting on this Study:

- A court reporter will be recording the presentation and is available to take comments before and after the presentation.
- Fill out a comment form, included in your handout packet and place it in the comment box.
- Submit comment forms by mail to: Jim Ceragioli, Nevada Department of Transportation, 1263 S. Stewart St., Carson City, NV., 89712.
- Via email to [info@dot.state.nv.us](mailto:info@dot.state.nv.us) (reference Kietzke Lane Safety Management Plan) in your correspondence.
- ***Comments will be accepted until 5:00 p.m. Friday, March 16, 2012***



SR 667



THANK YOU!

NDOT Website:

<http://www.nevadadot.com>

E-mail us:

[Info@dot.state.nv.us](mailto:Info@dot.state.nv.us)

Follow us!

