

PRIORITY 2 & 3 RECOMMENDATIONS MAP



KIETZKE LANE SAFETY MANAGEMENT PLAN

zero Fatalities'
Drive Safe Nevada

KIETZKE LANE SAFETY MANAGMENT PLAN

* PRIORITY 2 and 3 RECOMMENDATIONS LEGEND



TRAFFIC SIGNAL CONTROL



DRIVEWAYS



ON STREET PARKING



ON STREE PARKING UTILIZED DURING 5/22/12 SURVEY



EXISTING MEDIAN ISLAND



MITIGATE DRIVEWAYS THAT ARE BLOCKED OR CLOSED/REPLACE WITH SIDEWALK AND CURB / GUTTER



PROPOSED MEDIAN ISLANDS



MITIGATE SIGNAL HEAD ALIGNMENT AND INSTALL RETRO-REFLECTIVE BACKPLATES



REPLACE DAMAGED SIDEWALK



REPLACE MISSING SIDEWALK WITH NEW SIDEWALK, C&G



BIKE LANE LESS THAN 5' WIDE



MITIGATE UTILITY POLE - OBSTRUCTION / CLEAR ZONE ISSUE



SWEEPING RIGHT TURN LANES



MITIGATE MISSING BIKE LANE WITH INSTALLATION OF NEW BIKE LANE



MITIGATE SIGNAL CONTROLLER CABINET OBSTRUCTION



MITIGATE SIGNAL POLE OBSTRUCTION



MITIGATE FIRE HYDRANT OBSTRUCTION



REPLACE DAMAGED JUNCTION BOX LID



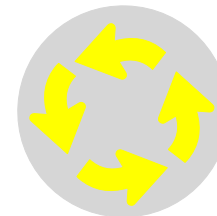
MITIGATE GUY WIRE OBSTRUCTION



MITIGATE DRIVEWAYS THAT ARE NON-ADA COMPLIANT OR CAN BE COMBINED



MITIGATE PEDESTRIAN RAMPS THAT ARE NON-ADA COMPLIANT / MISSING RAMPS



POSSIBLE LOCATION FOR FUTURE ROUNDABOUT

* Priority 2 - Improvements that can be included in a future NDOT or RTC project.

Priority 3 - Improvements that can be included in a long range improvement plan.



ALL INFORMATION PRESENTED IS PRELIMINARY
SUBJECT TO REVISION

KIETZKE LANE SAFETY MANAGEMENT PLAN PRIORITY 2 AND 3 RECOMMENDATIONS

STATE OF NEVADA
DEPARTMENT OF TRANSPORTATION
KIETZKE LANE SAFETY MANAGEMENT PLAN



KIETZKE LANE SAFETY MANAGMENT PLAN

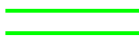
* PRIORITY 2 and 3 RECOMMENDATIONS LEGEND



TRAFFIC SIGNAL CONTROL



DRIVEWAYS



ON STREET PARKING



ON STREE PARKING UTILIZED DURING 5/22/12 SURVEY



EXISTING MEDIAN ISLAND



MITIGATE DRIVEWAYS THAT ARE BLOCKED OR CLOSED/REPLACE WITH SIDEWALK AND CURB / GUTTER



PROPOSED MEDIAN ISLANDS



MITIGATE SIGNAL HEAD ALIGNMENT AND INSTALL RETRO-REFLECTIVE BACKPLATES



REPLACE DAMAGED SIDEWALK



REPLACE MISSING SIDEWALK WITH NEW SIDEWALK, C&G



BIKE LANE LESS THAN 5' WIDE



MITIGATE UTILITY POLE - OBSTRUCTION / CLEAR ZONE ISSUE



SWEEPING RIGHT TURN LANES



MITIGATE MISSING BIKE LANE WITH INSTALLATION OF NEW BIKE LANE



MITIGATE SIGNAL CONTROLLER CABINET OBSTRUCTION



MITIGATE SIGNAL POLE OBSTRUCTION



MITIGATE FIRE HYDRANT OBSTRUCTION



REPLACE DAMAGED JUNCTION BOX LID



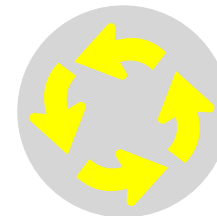
MITIGATE GUY WIRE OBSTRUCTION



MITIGATE DRIVEWAYS THAT ARE NON-ADA COMPLIANT OR CAN BE COMBINED



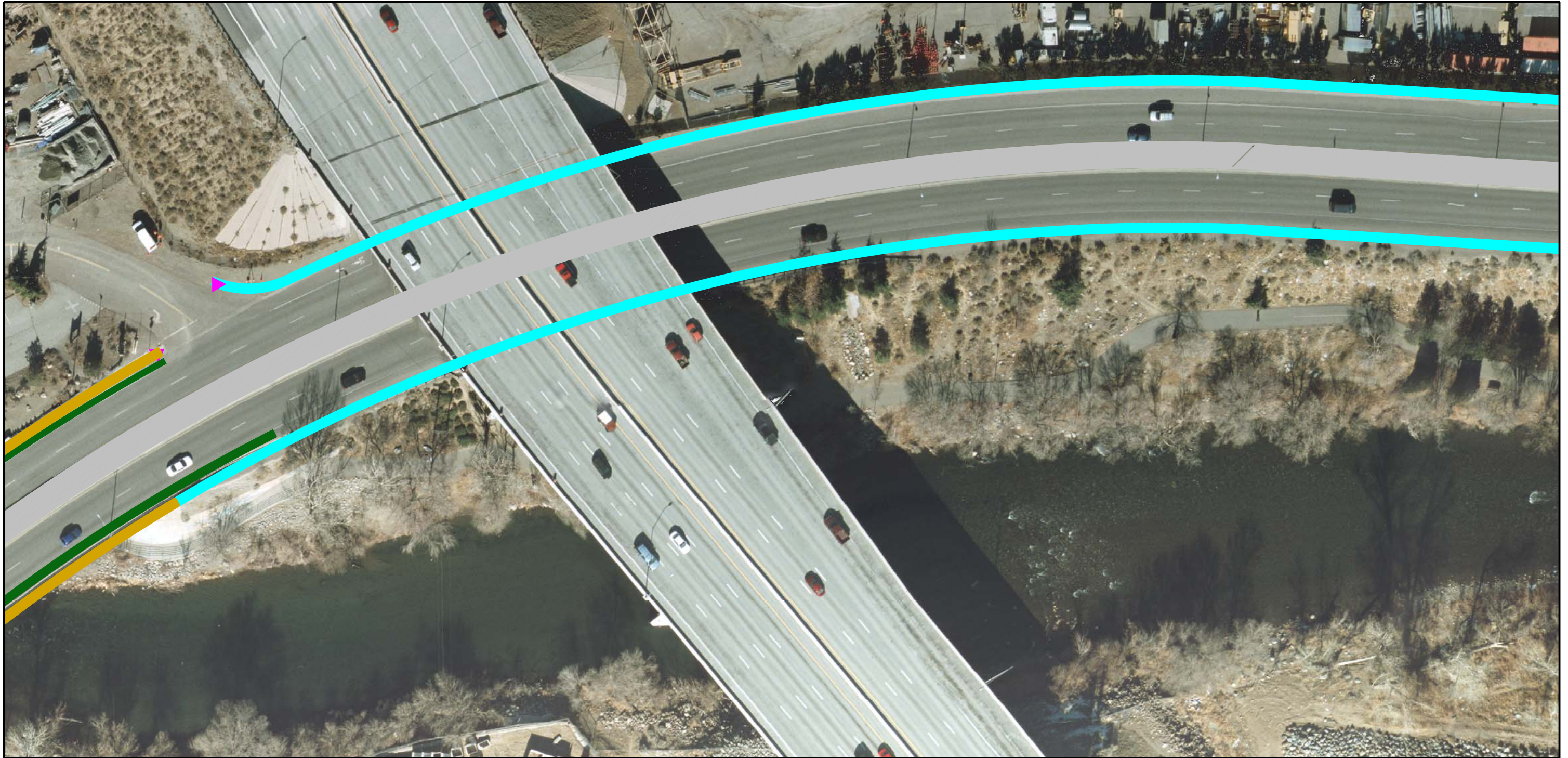
MITIGATE PEDESTRIAN RAMPS THAT ARE NON-ADA COMPLIANT / MISSING RAMPS



POSSIBLE LOCATION FOR FUTURE ROUNDABOUT

* Priority 2 - Improvements that can be included in a future NDOT or RTC project.

Priority 3 - Improvements that can be included in a long range improvement plan.



ALL INFORMATION PRESENTED IS PRELIMINARY
SUBJECT TO REVISION

KIETZKE LANE SAFETY MANAGEMENT PLAN PRIORITY 2 AND 3 RECOMMENDATIONS

STATE OF NEVADA
DEPARTMENT OF TRANSPORTATION
KIETZKE LANE SAFETY MANAGEMENT PLAN



KIETZKE LANE SAFETY MANAGMENT PLAN

* PRIORITY 2 and 3 RECOMMENDATIONS LEGEND



TRAFFIC SIGNAL CONTROL



DRIVEWAYS



ON STREET PARKING



ON STREE PARKING UTILIZED DURING 5/22/12 SURVEY



EXISTING MEDIAN ISLAND



MITIGATE DRIVEWAYS THAT ARE BLOCKED OR CLOSED/REPLACE WITH SIDEWALK AND CURB / GUTTER



PROPOSED MEDIAN ISLANDS



MITIGATE SIGNAL HEAD ALIGNMENT AND INSTALL RETRO-REFLECTIVE BACKPLATES



REPLACE DAMAGED SIDEWALK



REPLACE MISSING SIDEWALK WITH NEW SIDEWALK, C&G



BIKE LANE LESS THAN 5' WIDE



MITIGATE UTILITY POLE - OBSTRUCTION / CLEAR ZONE ISSUE



SWEEPING RIGHT TURN LANES



MITIGATE MISSING BIKE LANE WITH INSTALLATION OF NEW BIKE LANE



MITIGATE SIGNAL CONTROLLER CABINET OBSTRUCTION



MITIGATE SIGNAL POLE OBSTRUCTION



MITIGATE FIRE HYDRANT OBSTRUCTION



REPLACE DAMAGED JUNCTION BOX LID



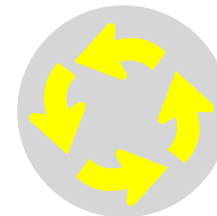
MITIGATE GUY WIRE OBSTRUCTION



MITIGATE DRIVEWAYS THAT ARE NON-ADA COMPLIANT OR CAN BE COMBINED



MITIGATE PEDESTRIAN RAMPS THAT ARE NON-ADA COMPLIANT / MISSING RAMPS



POSSIBLE LOCATION FOR FUTURE ROUNDABOUT

* Priority 2 - Improvements that can be included in a future NDOT or RTC project.

Priority 3 - Improvements that can be included in a long range improvement plan.



ALL INFORMATION PRESENTED IS PRELIMINARY
SUBJECT TO REVISION

KIETZKE LANE SAFETY MANAGEMENT PLAN PRIORITY 2 AND 3 RECOMMENDATIONS

STATE OF NEVADA
DEPARTMENT OF TRANSPORTATION
KIETZKE LANE SAFETY MANAGEMENT PLAN



KIETZKE LANE SAFETY MANAGMENT PLAN

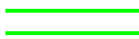
* PRIORITY 2 and 3 RECOMMENDATIONS LEGEND



TRAFFIC SIGNAL CONTROL



DRIVEWAYS



ON STREET PARKING



ON STREE PARKING UTILIZED DURING 5/22/12 SURVEY



EXISTING MEDIAN ISLAND



MITIGATE DRIVEWAYS THAT ARE BLOCKED OR CLOSED/REPLACE WITH SIDEWALK AND CURB / GUTTER



PROPOSED MEDIAN ISLANDS



MITIGATE SIGNAL HEAD ALIGNMENT AND INSTALL RETRO-REFLECTIVE BACKPLATES



REPLACE DAMAGED SIDEWALK



REPLACE MISSING SIDEWALK WITH NEW SIDEWALK, C&G



BIKE LANE LESS THAN 5' WIDE



MITIGATE UTILITY POLE - OBSTRUCTION / CLEAR ZONE ISSUE



SWEEPING RIGHT TURN LANES



MITIGATE MISSING BIKE LANE WITH INSTALLATION OF NEW BIKE LANE



MITIGATE SIGNAL CONTROLLER CABINET OBSTRUCTION



MITIGATE SIGNAL POLE OBSTRUCTION



MITIGATE FIRE HYDRANT OBSTRUCTION



REPLACE DAMAGED JUNCTION BOX LID



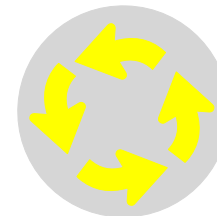
MITIGATE GUY WIRE OBSTRUCTION



MITIGATE DRIVEWAYS THAT ARE NON-ADA COMPLIANT OR CAN BE COMBINED



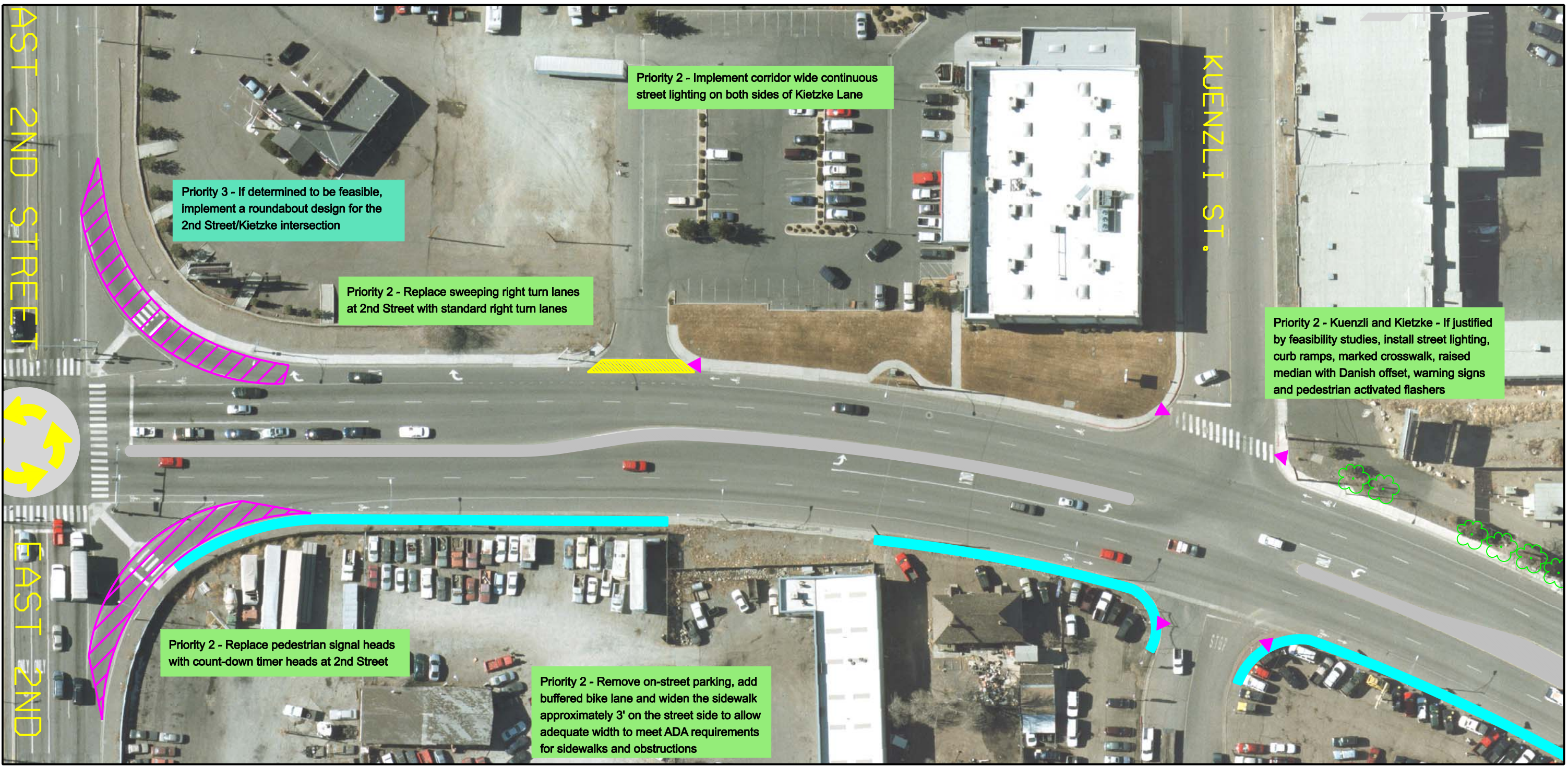
MITIGATE PEDESTRIAN RAMPS THAT ARE NON-ADA COMPLIANT / MISSING RAMPS



POSSIBLE LOCATION FOR FUTURE ROUNDABOUT

* Priority 2 - Improvements that can be included in a future NDOT or RTC project.

Priority 3 - Improvements that can be included in a long range improvement plan.



ALL INFORMATION PRESENTED IS PRELIMINARY
SUBJECT TO REVISION

KIETZKE LANE SAFETY MANAGEMENT PLAN PRIORITY 2 AND 3 RECOMMENDATIONS

KIETZKE LANE SAFETY MANAGMENT PLAN

* PRIORITY 2 and 3 RECOMMENDATIONS LEGEND



TRAFFIC SIGNAL CONTROL



DRIVEWAYS



ON STREET PARKING



ON STREE PARKING UTILIZED DURING 5/22/12 SURVEY



EXISTING MEDIAN ISLAND



MITIGATE DRIVEWAYS THAT ARE BLOCKED OR CLOSED/REPLACE WITH SIDEWALK AND CURB / GUTTER



PROPOSED MEDIAN ISLANDS



MITIGATE SIGNAL HEAD ALIGNMENT AND INSTALL RETRO-REFLECTIVE BACKPLATES



REPLACE DAMAGED SIDEWALK



REPLACE MISSING SIDEWALK WITH NEW SIDEWALK, C&G



BIKE LANE LESS THAN 5' WIDE



MITIGATE UTILITY POLE - OBSTRUCTION / CLEAR ZONE ISSUE



SWEEPING RIGHT TURN LANES



MITIGATE MISSING BIKE LANE WITH INSTALLATION OF NEW BIKE LANE



MITIGATE SIGNAL CONTROLLER CABINET OBSTRUCTION



MITIGATE SIGNAL POLE OBSTRUCTION



MITIGATE FIRE HYDRANT OBSTRUCTION



REPLACE DAMAGED JUNCTION BOX LID



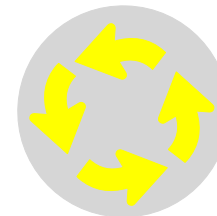
MITIGATE GUY WIRE OBSTRUCTION



MITIGATE DRIVEWAYS THAT ARE NON-ADA COMPLIANT OR CAN BE COMBINED



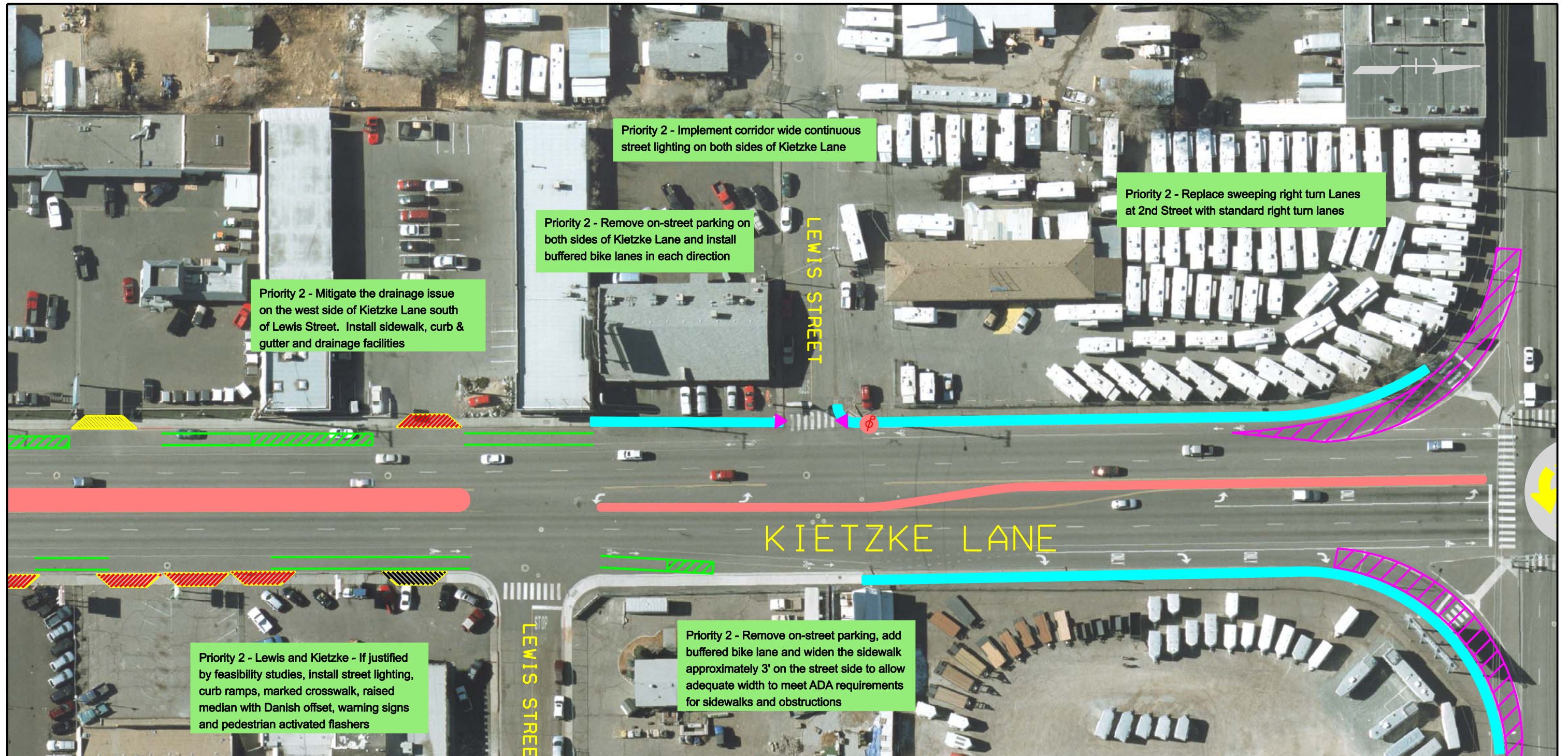
MITIGATE PEDESTRIAN RAMPS THAT ARE NON-ADA COMPLIANT / MISSING RAMPS



POSSIBLE LOCATION FOR FUTURE ROUNDABOUT

* Priority 2 - Improvements that can be included in a future NDOT or RTC project.

Priority 3 - Improvements that can be included in a long range improvement plan.



Priority 2 - Mitigate the drainage issue on the west side of Kietzke Lane south of Lewis Street. Install sidewalk, curb & gutter and drainage facilities

Priority 2 - Remove on-street parking on both sides of Kietzke Lane and install buffered bike lanes in each direction

Priority 2 - Implement corridor wide continuous street lighting on both sides of Kietzke Lane

Priority 2 - Replace sweeping right turn Lanes at 2nd Street with standard right turn lanes

Priority 2 - Lewis and Kietzke - If justified by feasibility studies, install street lighting, curb ramps, marked crosswalk, raised median with Danish offset, warning signs and pedestrian activated flashers

Priority 2 - Remove on-street parking, add buffered bike lane and widen the sidewalk approximately 3' on the street side to allow adequate width to meet ADA requirements for sidewalks and obstructions

ALL INFORMATION PRESENTED IS PRELIMINARY
SUBJECT TO REVISION

KIETZKE LANE SAFETY MANAGEMENT PLAN
PRIORITY 2 AND 3 RECOMMENDATIONS

KIETZKE LANE SAFETY MANAGMENT PLAN

* PRIORITY 2 and 3 RECOMMENDATIONS LEGEND



TRAFFIC SIGNAL CONTROL



DRIVEWAYS



ON STREET PARKING



ON STREE PARKING UTILIZED DURING 5/22/12 SURVEY



EXISTING MEDIAN ISLAND



MITIGATE DRIVEWAYS THAT ARE BLOCKED OR CLOSED/REPLACE WITH SIDEWALK AND CURB / GUTTER



PROPOSED MEDIAN ISLANDS



MITIGATE SIGNAL HEAD ALIGNMENT AND INSTALL RETRO-REFLECTIVE BACKPLATES



REPLACE DAMAGED SIDEWALK



REPLACE MISSING SIDEWALK WITH NEW SIDEWALK, C&G



BIKE LANE LESS THAN 5' WIDE



MITIGATE UTILITY POLE - OBSTRUCTION / CLEAR ZONE ISSUE



SWEEPING RIGHT TURN LANES



MITIGATE MISSING BIKE LANE WITH INSTALLATION OF NEW BIKE LANE



MITIGATE SIGNAL CONTROLLER CABINET OBSTRUCTION



MITIGATE SIGNAL POLE OBSTRUCTION



MITIGATE FIRE HYDRANT OBSTRUCTION



REPLACE DAMAGED JUNCTION BOX LID



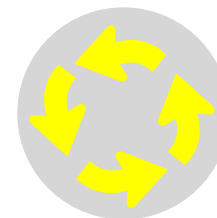
MITIGATE GUY WIRE OBSTRUCTION



MITIGATE DRIVEWAYS THAT ARE NON-ADA COMPLIANT OR CAN BE COMBINED



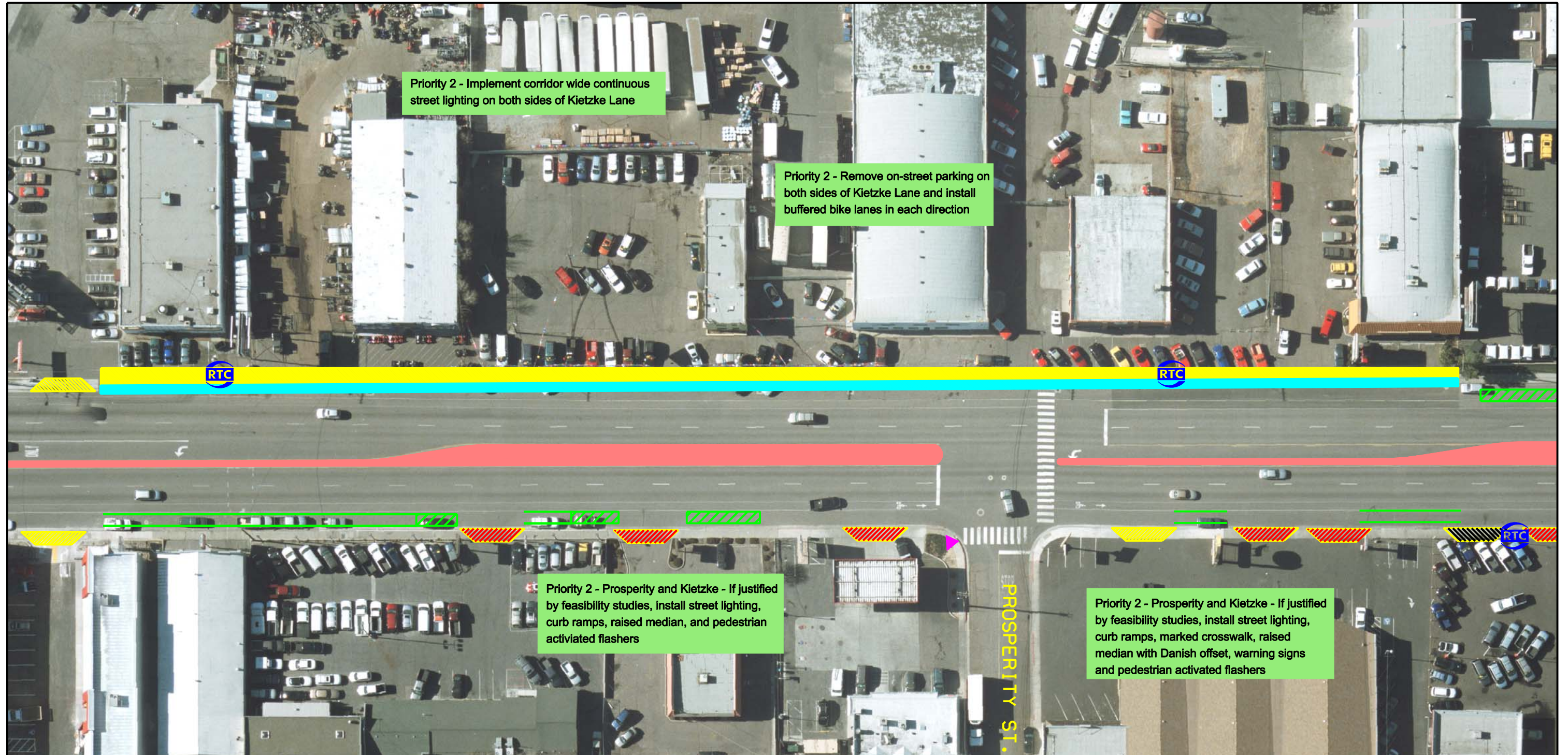
MITIGATE PEDESTRIAN RAMPS THAT ARE NON-ADA COMPLIANT / MISSING RAMPS



POSSIBLE LOCATION FOR FUTURE ROUNDABOUT

* Priority 2 - Improvements that can be included in a future NDOT or RTC project.

Priority 3 - Improvements that can be included in a long range improvement plan.



Priority 2 - Implement corridor wide continuous street lighting on both sides of Kietzke Lane

Priority 2 - Remove on-street parking on both sides of Kietzke Lane and install buffered bike lanes in each direction

Priority 2 - Prosperity and Kietzke - If justified by feasibility studies, install street lighting, curb ramps, raised median, and pedestrian activated flashers

Priority 2 - Prosperity and Kietzke - If justified by feasibility studies, install street lighting, curb ramps, marked crosswalk, raised median with Danish offset, warning signs and pedestrian activated flashers

ALL INFORMATION PRESENTED IS PRELIMINARY
SUBJECT TO REVISION

KIETZKE LANE SAFETY MANAGEMENT PLAN

PRIORITY 2 AND 3 RECOMMENDATIONS

KIETZKE LANE SAFETY MANAGMENT PLAN

* PRIORITY 2 and 3 RECOMMENDATIONS LEGEND



TRAFFIC SIGNAL CONTROL



DRIVEWAYS



ON STREET PARKING



ON STREE PARKING UTILIZED DURING 5/22/12 SURVEY



EXISTING MEDIAN ISLAND



MITIGATE DRIVEWAYS THAT ARE BLOCKED OR CLOSED/REPLACE WITH SIDEWALK AND CURB / GUTTER



PROPOSED MEDIAN ISLANDS



MITIGATE SIGNAL HEAD ALIGNMENT AND INSTALL RETRO-REFLECTIVE BACKPLATES



REPLACE DAMAGED SIDEWALK



REPLACE MISSING SIDEWALK WITH NEW SIDEWALK, C&G



BIKE LANE LESS THAN 5' WIDE



MITIGATE UTILITY POLE - OBSTRUCTION / CLEAR ZONE ISSUE



SWEEPING RIGHT TURN LANES



MITIGATE MISSING BIKE LANE WITH INSTALLATION OF NEW BIKE LANE



MITIGATE SIGNAL CONTROLLER CABINET OBSTRUCTION



MITIGATE SIGNAL POLE OBSTRUCTION



MITIGATE FIRE HYDRANT OBSTRUCTION



REPLACE DAMAGED JUNCTION BOX LID



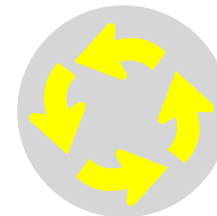
MITIGATE GUY WIRE OBSTRUCTION



MITIGATE DRIVEWAYS THAT ARE NON-ADA COMPLIANT OR CAN BE COMBINED



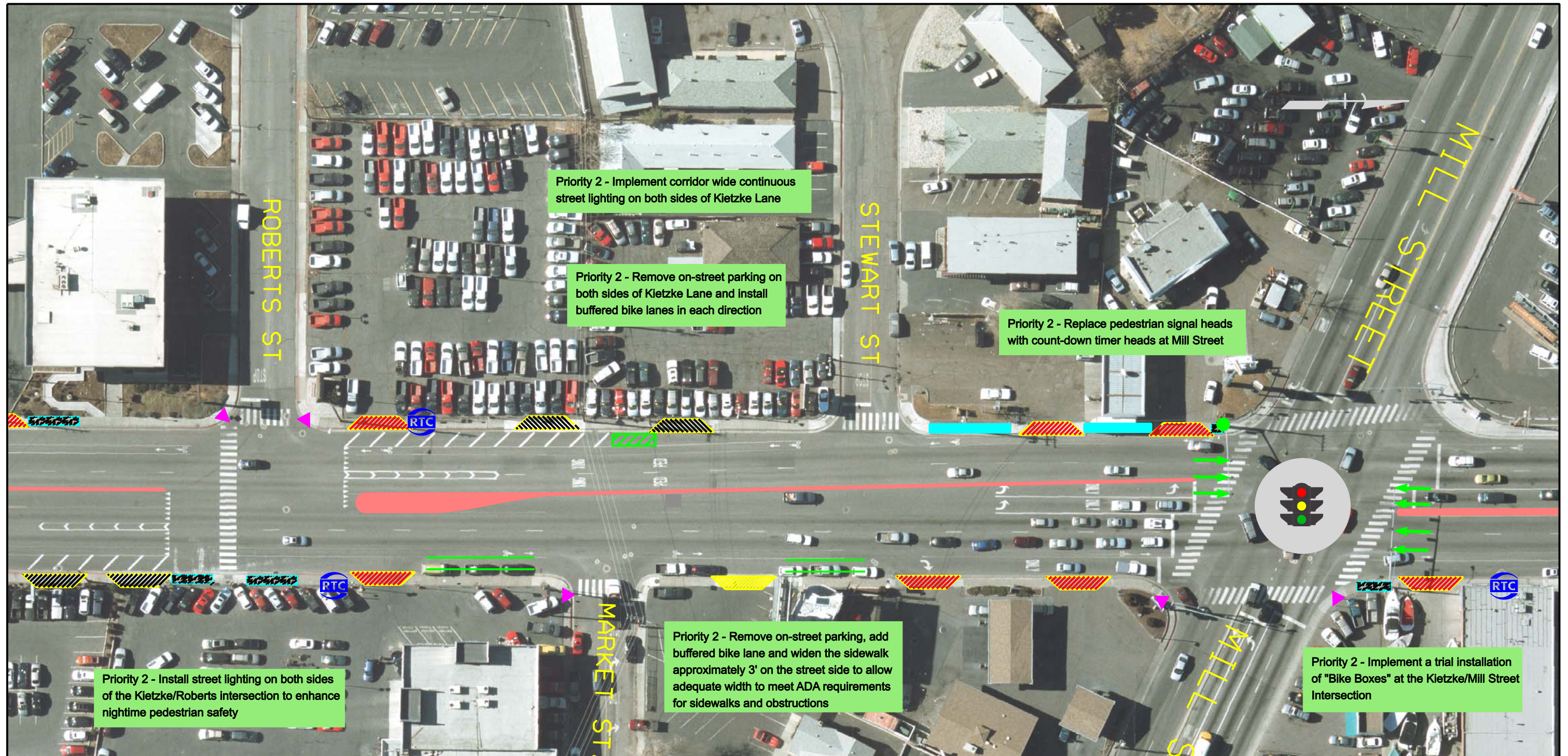
MITIGATE PEDESTRIAN RAMPS THAT ARE NON-ADA COMPLIANT / MISSING RAMPS



POSSIBLE LOCATION FOR FUTURE ROUNDABOUT

* Priority 2 - Improvements that can be included in a future NDOT or RTC project.

Priority 3 - Improvements that can be included in a long range improvement plan.



ALL INFORMATION PRESENTED IS PRELIMINARY
SUBJECT TO REVISION

KIETZKE LANE SAFETY MANAGEMENT PLAN

PRIORITY 2 AND 3 RECOMMENDATIONS

STATE OF NEVADA
DEPARTMENT OF TRANSPORTATION
KIETZKE LANE SAFETY MANAGEMENT PLAN



KIETZKE LANE SAFETY MANAGMENT PLAN

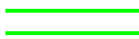
* PRIORITY 2 and 3 RECOMMENDATIONS LEGEND



TRAFFIC SIGNAL CONTROL



DRIVEWAYS



ON STREET PARKING



ON STREE PARKING UTILIZED DURING 5/22/12 SURVEY



EXISTING MEDIAN ISLAND



MITIGATE DRIVEWAYS THAT ARE BLOCKED OR CLOSED/REPLACE WITH SIDEWALK AND CURB / GUTTER



PROPOSED MEDIAN ISLANDS



MITIGATE SIGNAL HEAD ALIGNMENT AND INSTALL RETRO-REFLECTIVE BACKPLATES



REPLACE DAMAGED SIDEWALK



REPLACE MISSING SIDEWALK WITH NEW SIDEWALK, C&G



BIKE LANE LESS THAN 5' WIDE



MITIGATE UTILITY POLE - OBSTRUCTION / CLEAR ZONE ISSUE



SWEEPING RIGHT TURN LANES



MITIGATE MISSING BIKE LANE WITH INSTALLATION OF NEW BIKE LANE



MITIGATE SIGNAL CONTROLLER CABINET OBSTRUCTION



MITIGATE SIGNAL POLE OBSTRUCTION



MITIGATE FIRE HYDRANT OBSTRUCTION



REPLACE DAMAGED JUNCTION BOX LID



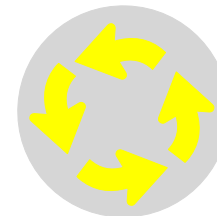
MITIGATE GUY WIRE OBSTRUCTION



MITIGATE DRIVEWAYS THAT ARE NON-ADA COMPLIANT OR CAN BE COMBINED



MITIGATE PEDESTRIAN RAMPS THAT ARE NON-ADA COMPLIANT / MISSING RAMPS



POSSIBLE LOCATION FOR FUTURE ROUNDABOUT

* Priority 2 - Improvements that can be included in a future NDOT or RTC project.

Priority 3 - Improvements that can be included in a long range improvement plan.



ALL INFORMATION PRESENTED IS PRELIMINARY
SUBJECT TO REVISION

KIETZKE LANE SAFETY MANAGEMENT PLAN PRIORITY 2 AND 3 RECOMMENDATIONS

KIETZKE LANE SAFETY MANAGMENT PLAN

* PRIORITY 2 and 3 RECOMMENDATIONS LEGEND



TRAFFIC SIGNAL CONTROL



DRIVEWAYS



ON STREET PARKING



ON STREE PARKING UTILIZED DURING 5/22/12 SURVEY



EXISTING MEDIAN ISLAND



MITIGATE DRIVEWAYS THAT ARE BLOCKED OR CLOSED/REPLACE WITH SIDEWALK AND CURB / GUTTER



PROPOSED MEDIAN ISLANDS



MITIGATE SIGNAL HEAD ALIGNMENT AND INSTALL RETRO-REFLECTIVE BACKPLATES



REPLACE DAMAGED SIDEWALK



REPLACE MISSING SIDEWALK WITH NEW SIDEWALK, C&G



BIKE LANE LESS THAN 5' WIDE



MITIGATE UTILITY POLE - OBSTRUCTION / CLEAR ZONE ISSUE



SWEEPING RIGHT TURN LANES



MITIGATE MISSING BIKE LANE WITH INSTALLATION OF NEW BIKE LANE



MITIGATE SIGNAL CONTROLLER CABINET OBSTRUCTION



MITIGATE SIGNAL POLE OBSTRUCTION



MITIGATE FIRE HYDRANT OBSTRUCTION



REPLACE DAMAGED JUNCTION BOX LID



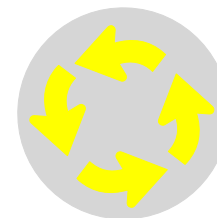
MITIGATE GUY WIRE OBSTRUCTION



MITIGATE DRIVEWAYS THAT ARE NON-ADA COMPLIANT OR CAN BE COMBINED



MITIGATE PEDESTRIAN RAMPS THAT ARE NON-ADA COMPLIANT / MISSING RAMPS



POSSIBLE LOCATION FOR FUTURE ROUNDABOUT

* Priority 2 - Improvements that can be included in a future NDOT or RTC project.

Priority 3 - Improvements that can be included in a long range improvement plan.



Priority 2 - Implement corridor wide continuous street lighting on both sides of Kietzke Lane

Priority 2 - Remove on-street parking on both sides of Kietzke Lane and install buffered bike lanes in each direction

Priority 2 - Remove on-street parking, add buffered bike lane and widen the sidewalk approximately 3' on the street side to allow adequate width to meet ADA requirements for sidewalks and obstructions

ALL INFORMATION PRESENTED IS PRELIMINARY
SUBJECT TO REVISION

KIETZKE LANE SAFETY MANAGEMENT PLAN PRIORITY 2 AND 3 RECOMMENDATIONS

KIETZKE LANE SAFETY MANAGMENT PLAN

* PRIORITY 2 and 3 RECOMMENDATIONS LEGEND



TRAFFIC SIGNAL CONTROL



DRIVEWAYS



ON STREET PARKING



ON STREE PARKING UTILIZED DURING 5/22/12 SURVEY



EXISTING MEDIAN ISLAND



MITIGATE DRIVEWAYS THAT ARE BLOCKED OR CLOSED/REPLACE WITH SIDEWALK AND CURB / GUTTER



PROPOSED MEDIAN ISLANDS



MITIGATE SIGNAL HEAD ALIGNMENT AND INSTALL RETRO-REFLECTIVE BACKPLATES



REPLACE DAMAGED SIDEWALK



REPLACE MISSING SIDEWALK WITH NEW SIDEWALK, C&G



BIKE LANE LESS THAN 5' WIDE



MITIGATE UTILITY POLE - OBSTRUCTION / CLEAR ZONE ISSUE



SWEEPING RIGHT TURN LANES



MITIGATE MISSING BIKE LANE WITH INSTALLATION OF NEW BIKE LANE



MITIGATE SIGNAL CONTROLLER CABINET OBSTRUCTION



MITIGATE SIGNAL POLE OBSTRUCTION



MITIGATE FIRE HYDRANT OBSTRUCTION



REPLACE DAMAGED JUNCTION BOX LID



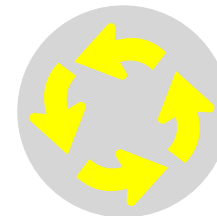
MITIGATE GUY WIRE OBSTRUCTION



MITIGATE DRIVEWAYS THAT ARE NON-ADA COMPLIANT OR CAN BE COMBINED



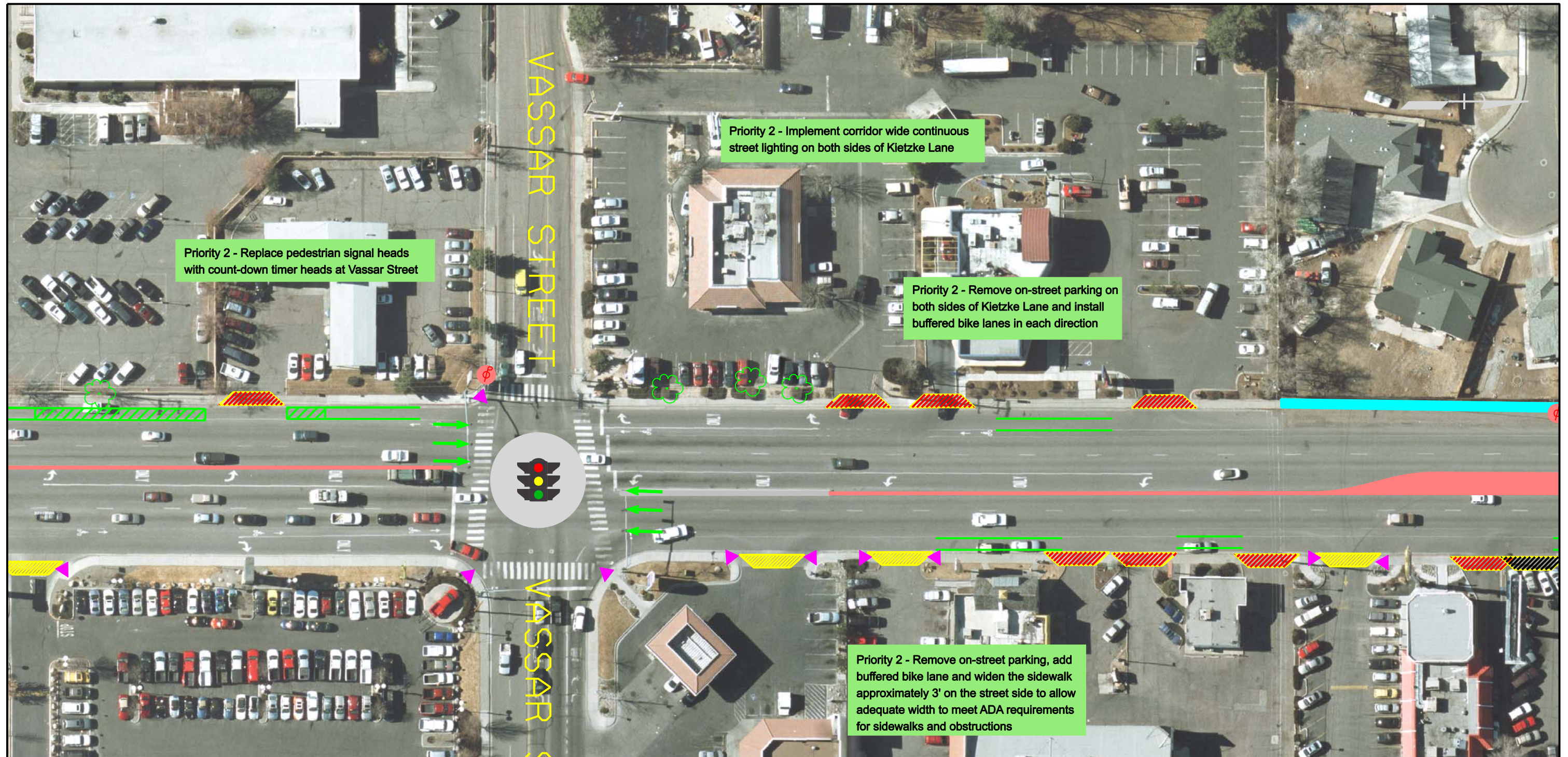
MITIGATE PEDESTRIAN RAMPS THAT ARE NON-ADA COMPLIANT / MISSING RAMPS



POSSIBLE LOCATION FOR FUTURE ROUNDABOUT

* Priority 2 - Improvements that can be included in a future NDOT or RTC project.

Priority 3 - Improvements that can be included in a long range improvement plan.



ALL INFORMATION PRESENTED IS PRELIMINARY
SUBJECT TO REVISION

KIETZKE LANE SAFETY MANAGEMENT PLAN

PRIORITY 2 AND 3 RECOMMENDATIONS

KIETZKE LANE SAFETY MANAGMENT PLAN

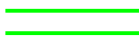
* PRIORITY 2 and 3 RECOMMENDATIONS LEGEND



TRAFFIC SIGNAL CONTROL



DRIVEWAYS



ON STREET PARKING



ON STREE PARKING UTILIZED DURING 5/22/12 SURVEY



EXISTING MEDIAN ISLAND



MITIGATE DRIVEWAYS THAT ARE BLOCKED OR CLOSED/REPLACE WITH SIDEWALK AND CURB / GUTTER



PROPOSED MEDIAN ISLANDS



MITIGATE SIGNAL HEAD ALIGNMENT AND INSTALL RETRO-REFLECTIVE BACKPLATES



REPLACE DAMAGED SIDEWALK



REPLACE MISSING SIDEWALK WITH NEW SIDEWALK, C&G



BIKE LANE LESS THAN 5' WIDE



MITIGATE UTILITY POLE - OBSTRUCTION / CLEAR ZONE ISSUE



SWEEPING RIGHT TURN LANES



MITIGATE MISSING BIKE LANE WITH INSTALLATION OF NEW BIKE LANE



MITIGATE SIGNAL CONTROLLER CABINET OBSTRUCTION



MITIGATE SIGNAL POLE OBSTRUCTION



MITIGATE FIRE HYDRANT OBSTRUCTION



REPLACE DAMAGED JUNCTION BOX LID



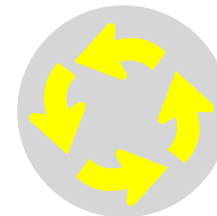
MITIGATE GUY WIRE OBSTRUCTION



MITIGATE DRIVEWAYS THAT ARE NON-ADA COMPLIANT OR CAN BE COMBINED



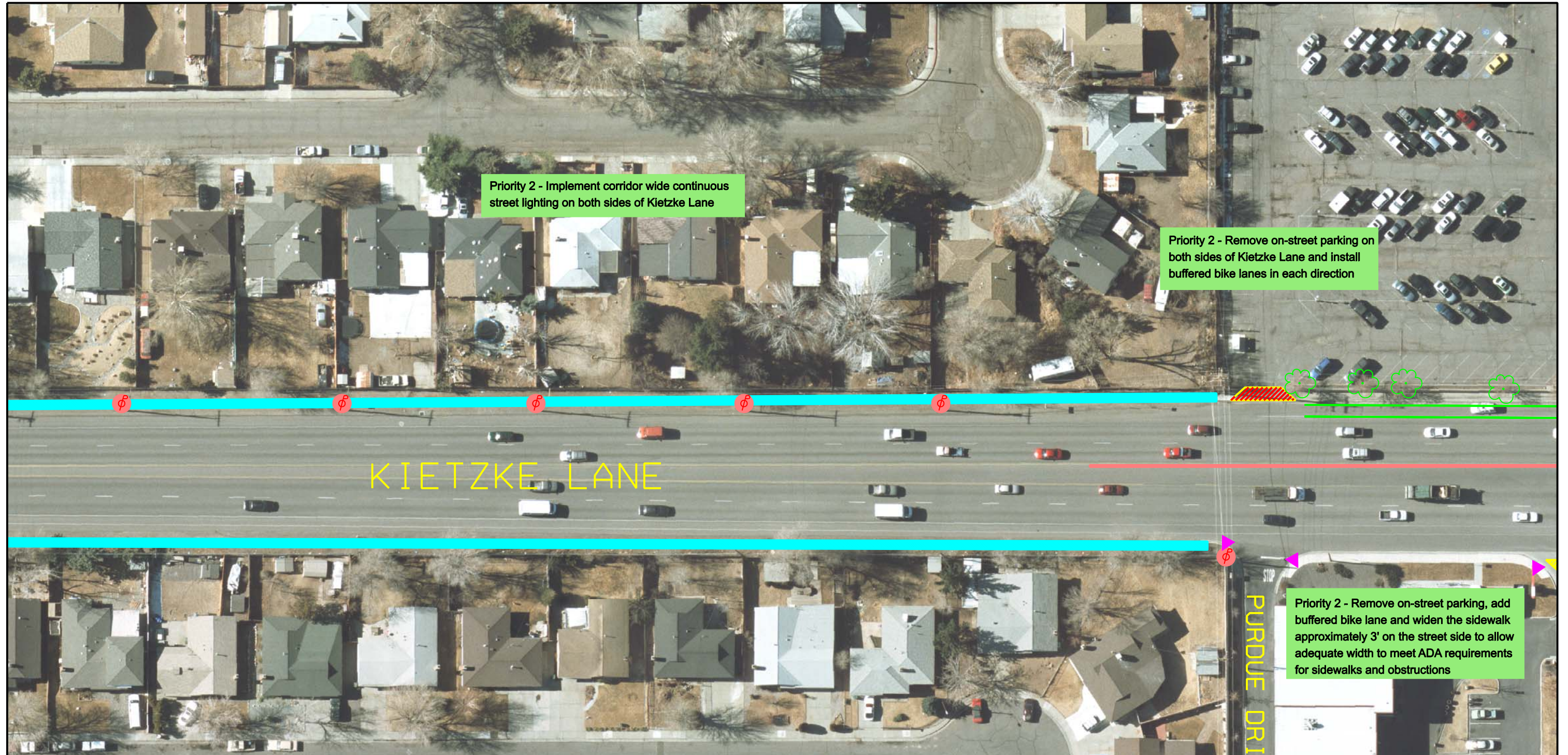
MITIGATE PEDESTRIAN RAMPS THAT ARE NON-ADA COMPLIANT / MISSING RAMPS



POSSIBLE LOCATION FOR FUTURE ROUNDABOUT

* Priority 2 - Improvements that can be included in a future NDOT or RTC project.

Priority 3 - Improvements that can be included in a long range improvement plan.



ALL INFORMATION PRESENTED IS PRELIMINARY
SUBJECT TO REVISION

KIETZKE LANE SAFETY MANAGEMENT PLAN
PRIORITY 2 AND 3 RECOMMENDATIONS

STATE OF NEVADA
DEPARTMENT OF TRANSPORTATION
KIETZKE LANE SAFETY MANAGEMENT PLAN

KIETZKE LANE SAFETY MANAGMENT PLAN

* PRIORITY 2 and 3 RECOMMENDATIONS LEGEND



TRAFFIC SIGNAL CONTROL



DRIVEWAYS



ON STREET PARKING



ON STREE PARKING UTILIZED DURING 5/22/12 SURVEY



EXISTING MEDIAN ISLAND



MITIGATE DRIVEWAYS THAT ARE BLOCKED OR CLOSED/REPLACE WITH SIDEWALK AND CURB / GUTTER



PROPOSED MEDIAN ISLANDS



MITIGATE SIGNAL HEAD ALIGNMENT AND INSTALL RETRO-REFLECTIVE BACKPLATES



REPLACE DAMAGED SIDEWALK



REPLACE MISSING SIDEWALK WITH NEW SIDEWALK, C&G



BIKE LANE LESS THAN 5' WIDE



MITIGATE UTILITY POLE - OBSTRUCTION / CLEAR ZONE ISSUE



SWEEPING RIGHT TURN LANES



MITIGATE MISSING BIKE LANE WITH INSTALLATION OF NEW BIKE LANE



MITIGATE SIGNAL CONTROLLER CABINET OBSTRUCTION



MITIGATE SIGNAL POLE OBSTRUCTION



MITIGATE FIRE HYDRANT OBSTRUCTION



REPLACE DAMAGED JUNCTION BOX LID



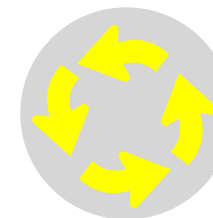
MITIGATE GUY WIRE OBSTRUCTION



MITIGATE DRIVEWAYS THAT ARE NON-ADA COMPLIANT OR CAN BE COMBINED



MITIGATE PEDESTRIAN RAMPS THAT ARE NON-ADA COMPLIANT / MISSING RAMPS



POSSIBLE LOCATION FOR FUTURE ROUNDABOUT

* Priority 2 - Improvements that can be included in a future NDOT or RTC project.

Priority 3 - Improvements that can be included in a long range improvement plan.



ALL INFORMATION PRESENTED IS PRELIMINARY
SUBJECT TO REVISION

KIETZKE LANE SAFETY MANAGEMENT PLAN PRIORITY 2 AND 3 RECOMMENDATIONS

STATE OF NEVADA
DEPARTMENT OF TRANSPORTATION
KIETZKE LANE SAFETY MANAGEMENT PLAN



KIETZKE LANE SAFETY MANAGMENT PLAN

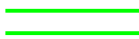
* PRIORITY 2 and 3 RECOMMENDATIONS LEGEND



TRAFFIC SIGNAL CONTROL



DRIVEWAYS



ON STREET PARKING



ON STREE PARKING UTILIZED DURING 5/22/12 SURVEY



EXISTING MEDIAN ISLAND



MITIGATE DRIVEWAYS THAT ARE BLOCKED OR CLOSED/REPLACE WITH SIDEWALK AND CURB / GUTTER



PROPOSED MEDIAN ISLANDS



MITIGATE SIGNAL HEAD ALIGNMENT AND INSTALL RETRO-REFLECTIVE BACKPLATES



REPLACE DAMAGED SIDEWALK



REPLACE MISSING SIDEWALK WITH NEW SIDEWALK, C&G



BIKE LANE LESS THAN 5' WIDE



MITIGATE UTILITY POLE - OBSTRUCTION / CLEAR ZONE ISSUE



SWEEPING RIGHT TURN LANES



MITIGATE MISSING BIKE LANE WITH INSTALLATION OF NEW BIKE LANE



MITIGATE SIGNAL CONTROLLER CABINET OBSTRUCTION



MITIGATE SIGNAL POLE OBSTRUCTION



MITIGATE FIRE HYDRANT OBSTRUCTION



REPLACE DAMAGED JUNCTION BOX LID



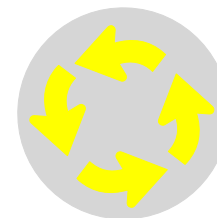
MITIGATE GUY WIRE OBSTRUCTION



MITIGATE DRIVEWAYS THAT ARE NON-ADA COMPLIANT OR CAN BE COMBINED



MITIGATE PEDESTRIAN RAMPS THAT ARE NON-ADA COMPLIANT / MISSING RAMPS



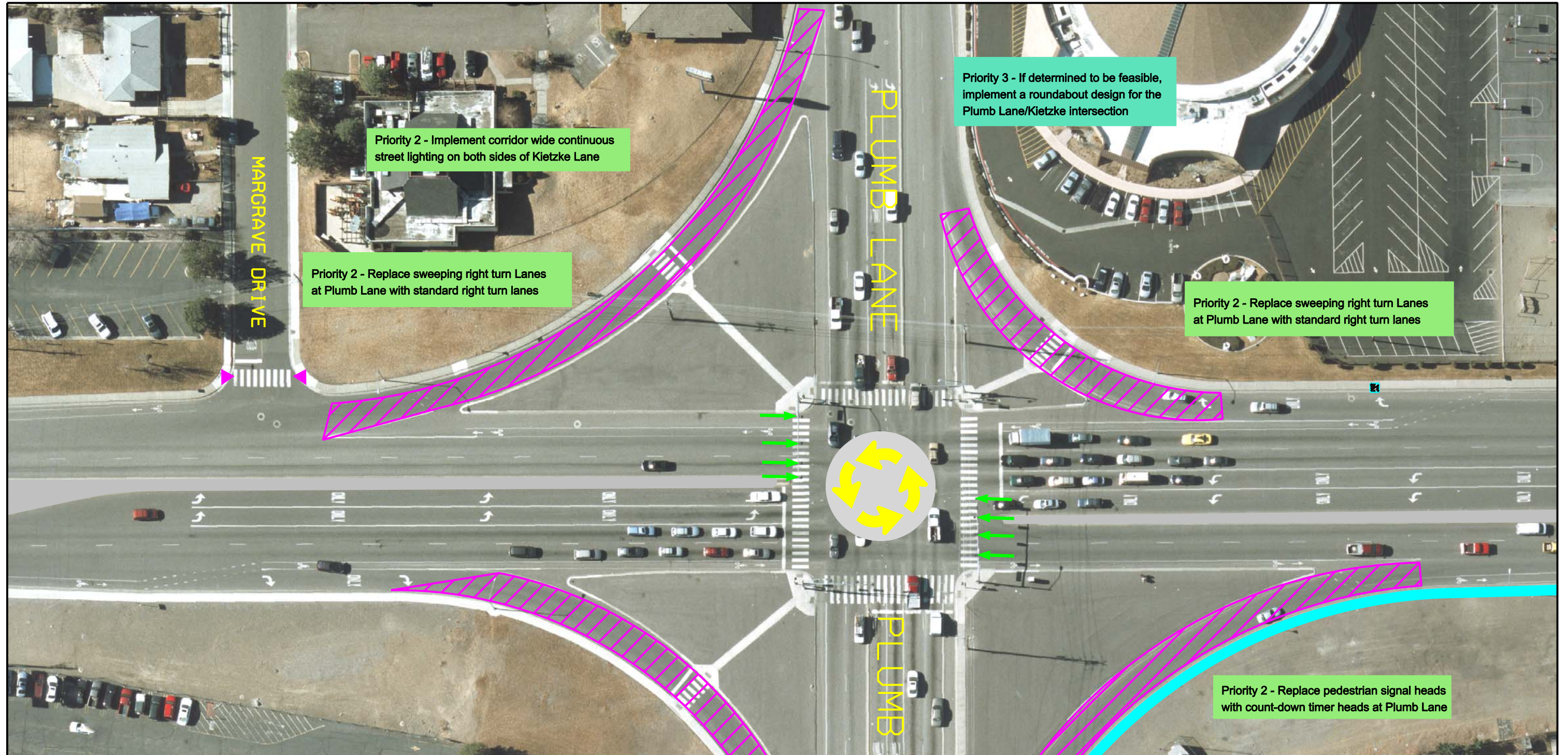
POSSIBLE LOCATION FOR FUTURE ROUNDABOUT

* Priority 2 - Improvements that can be included in a future NDOT or RTC project.

Priority 3 - Improvements that can be included in a long range improvement plan.

SEGMENT 4 ←

→ SEGMENT 3



ALL INFORMATION PRESENTED IS PRELIMINARY
SUBJECT TO REVISION

KIETZKE LANE SAFETY MANAGEMENT PLAN PRIORITY 2 AND 3 RECOMMENDATIONS

KIETZKE LANE SAFETY MANAGMENT PLAN

* PRIORITY 2 and 3 RECOMMENDATIONS LEGEND



TRAFFIC SIGNAL CONTROL



DRIVEWAYS



ON STREET PARKING



ON STREE PARKING UTILIZED DURING 5/22/12 SURVEY



EXISTING MEDIAN ISLAND



MITIGATE DRIVEWAYS THAT ARE BLOCKED OR CLOSED/REPLACE WITH SIDEWALK AND CURB / GUTTER



PROPOSED MEDIAN ISLANDS



MITIGATE SIGNAL HEAD ALIGNMENT AND INSTALL RETRO-REFLECTIVE BACKPLATES



REPLACE DAMAGED SIDEWALK



REPLACE MISSING SIDEWALK WITH NEW SIDEWALK, C&G



BIKE LANE LESS THAN 5' WIDE



MITIGATE UTILITY POLE - OBSTRUCTION / CLEAR ZONE ISSUE



SWEEPING RIGHT TURN LANES



MITIGATE MISSING BIKE LANE WITH INSTALLATION OF NEW BIKE LANE



MITIGATE SIGNAL CONTROLLER CABINET OBSTRUCTION



MITIGATE SIGNAL POLE OBSTRUCTION



MITIGATE FIRE HYDRANT OBSTRUCTION



REPLACE DAMAGED JUNCTION BOX LID



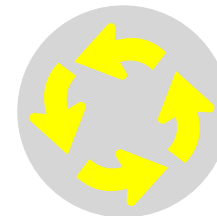
MITIGATE GUY WIRE OBSTRUCTION



MITIGATE DRIVEWAYS THAT ARE NON-ADA COMPLIANT OR CAN BE COMBINED



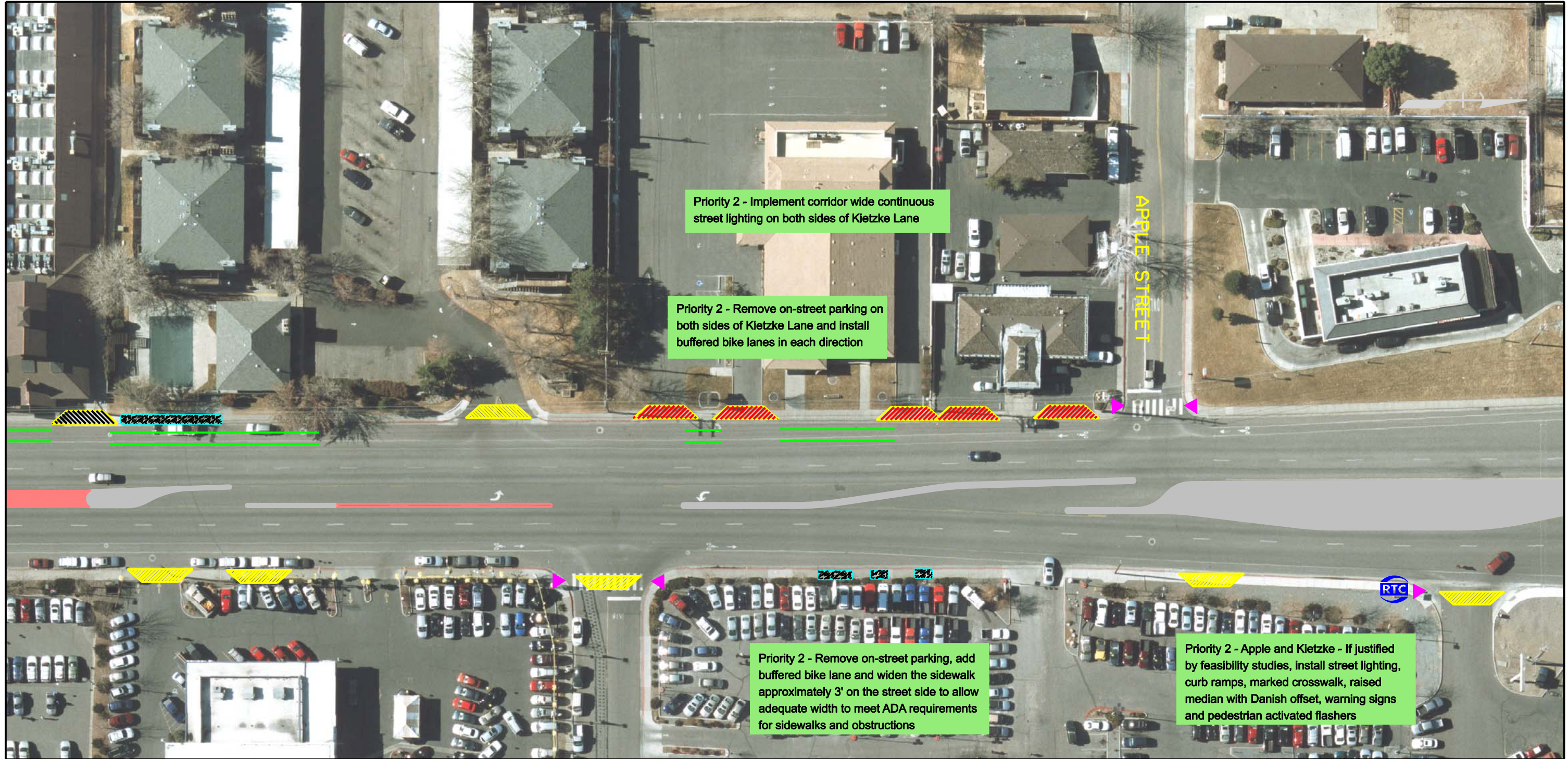
MITIGATE PEDESTRIAN RAMPS THAT ARE NON-ADA COMPLIANT / MISSING RAMPS



POSSIBLE LOCATION FOR FUTURE ROUNDABOUT

* Priority 2 - Improvements that can be included in a future NDOT or RTC project.

Priority 3 - Improvements that can be included in a long range improvement plan.



Priority 2 - Implement corridor wide continuous street lighting on both sides of Kietzke Lane

Priority 2 - Remove on-street parking on both sides of Kietzke Lane and install buffered bike lanes in each direction

Priority 2 - Remove on-street parking, add buffered bike lane and widen the sidewalk approximately 3' on the street side to allow adequate width to meet ADA requirements for sidewalks and obstructions

Priority 2 - Apple and Kietzke - If justified by feasibility studies, install street lighting, curb ramps, marked crosswalk, raised median with Danish offset, warning signs and pedestrian activated flashers

ALL INFORMATION PRESENTED IS PRELIMINARY
SUBJECT TO REVISION

KIETZKE LANE SAFETY MANAGEMENT PLAN PRIORITY 2 AND 3 RECOMMENDATIONS

...P23 SHEETS\P23-9.dgn 2/7/2013 11:24:08 AM

KIETZKE LANE SAFETY MANAGMENT PLAN

* PRIORITY 2 and 3 RECOMMENDATIONS LEGEND



TRAFFIC SIGNAL CONTROL



DRIVEWAYS



ON STREET PARKING



ON STREE PARKING UTILIZED DURING 5/22/12 SURVEY



EXISTING MEDIAN ISLAND



MITIGATE DRIVEWAYS THAT ARE BLOCKED OR CLOSED/REPLACE WITH SIDEWALK AND CURB / GUTTER



PROPOSED MEDIAN ISLANDS



MITIGATE SIGNAL HEAD ALIGNMENT AND INSTALL RETRO-REFLECTIVE BACKPLATES



REPLACE DAMAGED SIDEWALK



REPLACE MISSING SIDEWALK WITH NEW SIDEWALK, C&G



BIKE LANE LESS THAN 5' WIDE



MITIGATE UTILITY POLE - OBSTRUCTION / CLEAR ZONE ISSUE



SWEEPING RIGHT TURN LANES



MITIGATE MISSING BIKE LANE WITH INSTALLATION OF NEW BIKE LANE



MITIGATE SIGNAL CONTROLLER CABINET OBSTRUCTION



MITIGATE SIGNAL POLE OBSTRUCTION



MITIGATE FIRE HYDRANT OBSTRUCTION



REPLACE DAMAGED JUNCTION BOX LID



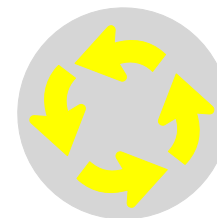
MITIGATE GUY WIRE OBSTRUCTION



MITIGATE DRIVEWAYS THAT ARE NON-ADA COMPLIANT OR CAN BE COMBINED



MITIGATE PEDESTRIAN RAMPS THAT ARE NON-ADA COMPLIANT / MISSING RAMPS



POSSIBLE LOCATION FOR FUTURE ROUNDABOUT

* Priority 2 - Improvements that can be included in a future NDOT or RTC project.

Priority 3 - Improvements that can be included in a long range improvement plan.



ALL INFORMATION PRESENTED IS PRELIMINARY
SUBJECT TO REVISION

KIETZKE LANE SAFETY MANAGEMENT PLAN

PRIORITY 2 AND 3 RECOMMENDATIONS

KIETZKE LANE SAFETY MANAGMENT PLAN

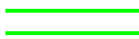
* PRIORITY 2 and 3 RECOMMENDATIONS LEGEND



TRAFFIC SIGNAL CONTROL



DRIVEWAYS



ON STREET PARKING



ON STREE PARKING UTILIZED DURING 5/22/12 SURVEY



EXISTING MEDIAN ISLAND



MITIGATE DRIVEWAYS THAT ARE BLOCKED OR CLOSED/REPLACE WITH SIDEWALK AND CURB / GUTTER



PROPOSED MEDIAN ISLANDS



MITIGATE SIGNAL HEAD ALIGNMENT AND INSTALL RETRO-REFLECTIVE BACKPLATES



REPLACE DAMAGED SIDEWALK



REPLACE MISSING SIDEWALK WITH NEW SIDEWALK, C&G



BIKE LANE LESS THAN 5' WIDE



MITIGATE UTILITY POLE - OBSTRUCTION / CLEAR ZONE ISSUE



SWEEPING RIGHT TURN LANES



MITIGATE MISSING BIKE LANE WITH INSTALLATION OF NEW BIKE LANE



MITIGATE SIGNAL CONTROLLER CABINET OBSTRUCTION



MITIGATE SIGNAL POLE OBSTRUCTION



MITIGATE FIRE HYDRANT OBSTRUCTION



REPLACE DAMAGED JUNCTION BOX LID



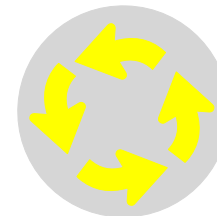
MITIGATE GUY WIRE OBSTRUCTION



MITIGATE DRIVEWAYS THAT ARE NON-ADA COMPLIANT OR CAN BE COMBINED



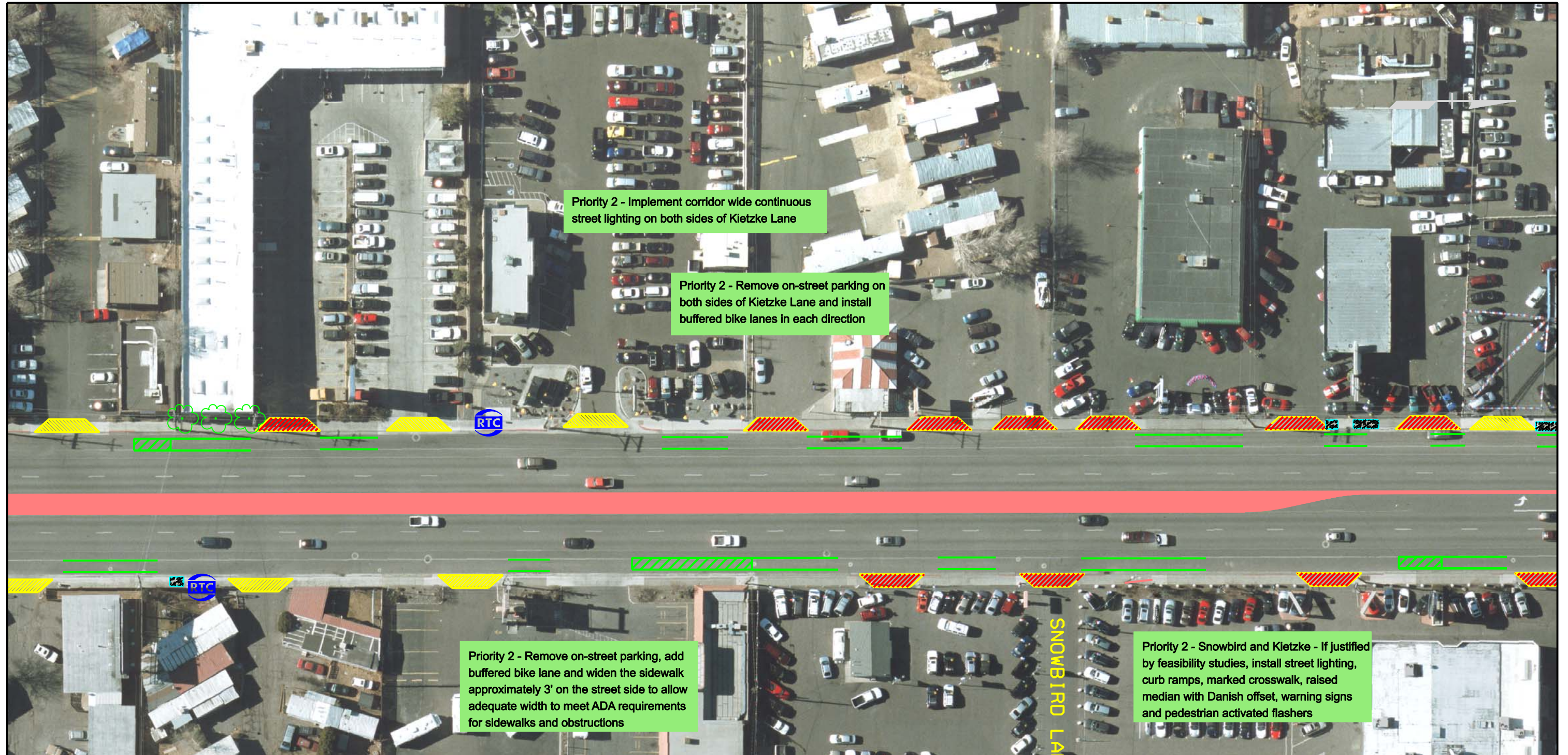
MITIGATE PEDESTRIAN RAMPS THAT ARE NON-ADA COMPLIANT / MISSING RAMPS



POSSIBLE LOCATION FOR FUTURE ROUNDABOUT

* Priority 2 - Improvements that can be included in a future NDOT or RTC project.

Priority 3 - Improvements that can be included in a long range improvement plan.



Priority 2 - Implement corridor wide continuous street lighting on both sides of Kietzke Lane

Priority 2 - Remove on-street parking on both sides of Kietzke Lane and install buffered bike lanes in each direction

Priority 2 - Remove on-street parking, add buffered bike lane and widen the sidewalk approximately 3' on the street side to allow adequate width to meet ADA requirements for sidewalks and obstructions

Priority 2 - Snowbird and Kietzke - If justified by feasibility studies, install street lighting, curb ramps, marked crosswalk, raised median with Danish offset, warning signs and pedestrian activated flashers

ALL INFORMATION PRESENTED IS PRELIMINARY
SUBJECT TO REVISION

KIETZKE LANE SAFETY MANAGEMENT PLAN

PRIORITY 2 AND 3 RECOMMENDATIONS

KIETZKE LANE SAFETY MANAGMENT PLAN

* PRIORITY 2 and 3 RECOMMENDATIONS LEGEND



TRAFFIC SIGNAL CONTROL



DRIVEWAYS



ON STREET PARKING



ON STREE PARKING UTILIZED DURING 5/22/12 SURVEY



EXISTING MEDIAN ISLAND



MITIGATE DRIVEWAYS THAT ARE BLOCKED OR CLOSED/REPLACE WITH SIDEWALK AND CURB / GUTTER



PROPOSED MEDIAN ISLANDS



MITIGATE SIGNAL HEAD ALIGNMENT AND INSTALL RETRO-REFLECTIVE BACKPLATES



REPLACE DAMAGED SIDEWALK



REPLACE MISSING SIDEWALK WITH NEW SIDEWALK, C&G



BIKE LANE LESS THAN 5' WIDE



MITIGATE UTILITY POLE - OBSTRUCTION / CLEAR ZONE ISSUE



SWEEPING RIGHT TURN LANES



MITIGATE MISSING BIKE LANE WITH INSTALLATION OF NEW BIKE LANE



MITIGATE SIGNAL CONTROLLER CABINET OBSTRUCTION



MITIGATE SIGNAL POLE OBSTRUCTION



MITIGATE FIRE HYDRANT OBSTRUCTION



REPLACE DAMAGED JUNCTION BOX LID



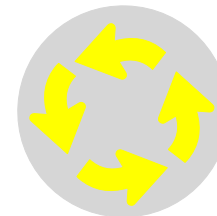
MITIGATE GUY WIRE OBSTRUCTION



MITIGATE DRIVEWAYS THAT ARE NON-ADA COMPLIANT OR CAN BE COMBINED



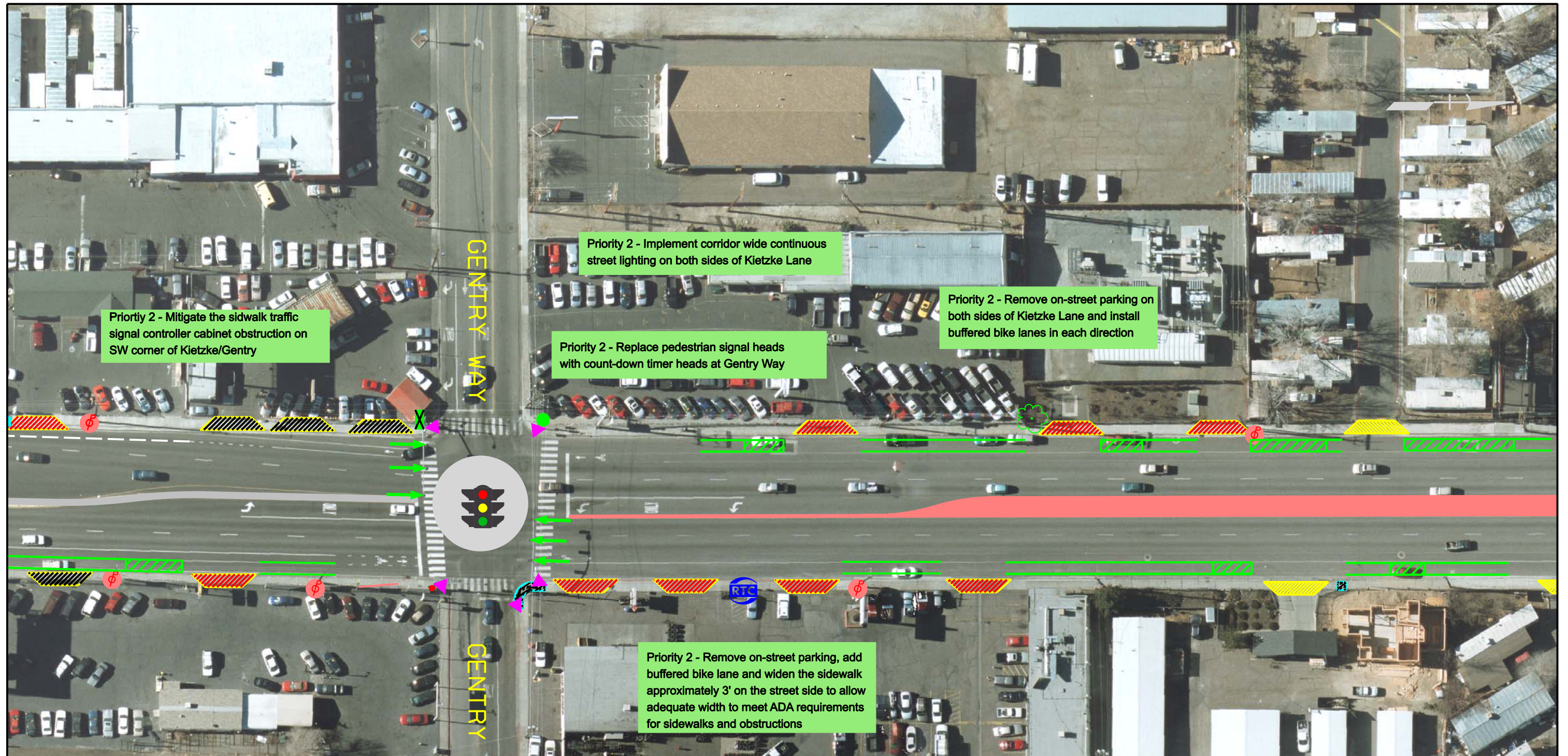
MITIGATE PEDESTRIAN RAMPS THAT ARE NON-ADA COMPLIANT / MISSING RAMPS



POSSIBLE LOCATION FOR FUTURE ROUNDABOUT

* Priority 2 - Improvements that can be included in a future NDOT or RTC project.

Priority 3 - Improvements that can be included in a long range improvement plan.



ALL INFORMATION PRESENTED IS PRELIMINARY
SUBJECT TO REVISION

KIETZKE LANE SAFETY MANAGEMENT PLAN

PRIORITY 2 AND 3 RECOMMENDATIONS

STATE OF NEVADA
DEPARTMENT OF TRANSPORTATION
KIETZKE LANE SAFETY MANAGEMENT PLAN



KIETZKE LANE SAFETY MANAGMENT PLAN

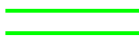
* PRIORITY 2 and 3 RECOMMENDATIONS LEGEND



TRAFFIC SIGNAL CONTROL



DRIVEWAYS



ON STREET PARKING



ON STREE PARKING UTILIZED DURING 5/22/12 SURVEY



EXISTING MEDIAN ISLAND



MITIGATE DRIVEWAYS THAT ARE BLOCKED OR CLOSED/REPLACE WITH SIDEWALK AND CURB / GUTTER



PROPOSED MEDIAN ISLANDS



MITIGATE SIGNAL HEAD ALIGNMENT AND INSTALL RETRO-REFLECTIVE BACKPLATES



REPLACE DAMAGED SIDEWALK



REPLACE MISSING SIDEWALK WITH NEW SIDEWALK, C&G



BIKE LANE LESS THAN 5' WIDE



MITIGATE UTILITY POLE - OBSTRUCTION / CLEAR ZONE ISSUE



SWEEPING RIGHT TURN LANES



MITIGATE MISSING BIKE LANE WITH INSTALLATION OF NEW BIKE LANE



MITIGATE SIGNAL CONTROLLER CABINET OBSTRUCTION



MITIGATE SIGNAL POLE OBSTRUCTION



MITIGATE FIRE HYDRANT OBSTRUCTION



REPLACE DAMAGED JUNCTION BOX LID



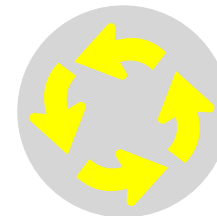
MITIGATE GUY WIRE OBSTRUCTION



MITIGATE DRIVEWAYS THAT ARE NON-ADA COMPLIANT OR CAN BE COMBINED



MITIGATE PEDESTRIAN RAMPS THAT ARE NON-ADA COMPLIANT / MISSING RAMPS



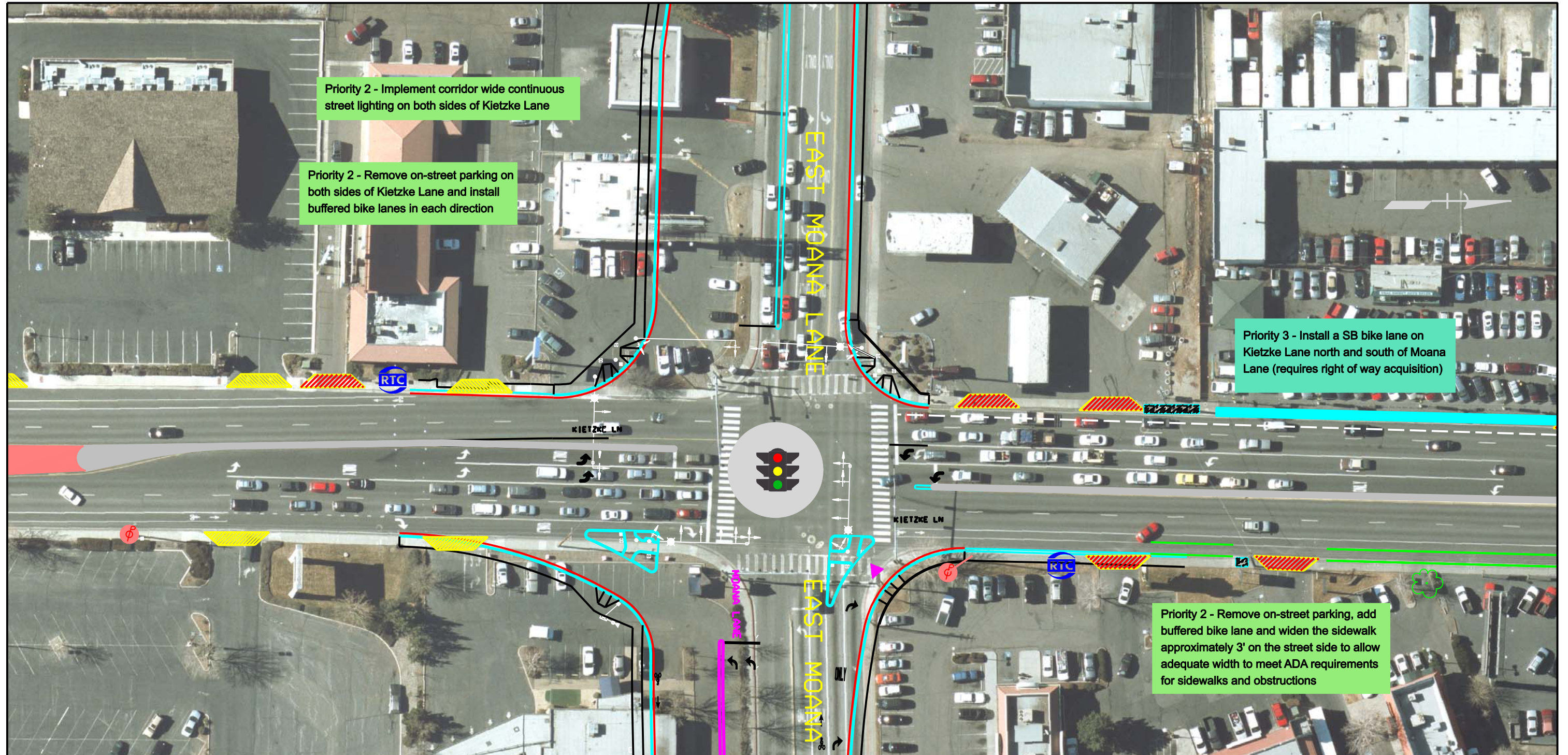
POSSIBLE LOCATION FOR FUTURE ROUNDABOUT

* Priority 2 - Improvements that can be included in a future NDOT or RTC project.

Priority 3 - Improvements that can be included in a long range improvement plan.

SEGMENT 5 ←

→ SEGMENT 4



ALL INFORMATION PRESENTED IS PRELIMINARY
SUBJECT TO REVISION

18

KIETZKE LANE SAFETY MANAGEMENT PLAN PRIORITY 2 AND 3 RECOMMENDATIONS

STATE OF NEVADA
DEPARTMENT OF TRANSPORTATION
KIETZKE LANE SAFETY MANAGEMENT PLAN



KIETZKE LANE SAFETY MANAGMENT PLAN

* PRIORITY 2 and 3 RECOMMENDATIONS LEGEND



TRAFFIC SIGNAL CONTROL



DRIVEWAYS



ON STREET PARKING



ON STREE PARKING UTILIZED DURING 5/22/12 SURVEY



EXISTING MEDIAN ISLAND



MITIGATE DRIVEWAYS THAT ARE BLOCKED OR CLOSED/REPLACE WITH SIDEWALK AND CURB / GUTTER



PROPOSED MEDIAN ISLANDS



MITIGATE SIGNAL HEAD ALIGNMENT AND INSTALL RETRO-REFLECTIVE BACKPLATES



REPLACE DAMAGED SIDEWALK



REPLACE MISSING SIDEWALK WITH NEW SIDEWALK, C&G



BIKE LANE LESS THAN 5' WIDE



MITIGATE UTILITY POLE - OBSTRUCTION / CLEAR ZONE ISSUE



SWEEPING RIGHT TURN LANES



MITIGATE MISSING BIKE LANE WITH INSTALLATION OF NEW BIKE LANE



MITIGATE SIGNAL CONTROLLER CABINET OBSTRUCTION



MITIGATE SIGNAL POLE OBSTRUCTION



MITIGATE FIRE HYDRANT OBSTRUCTION



REPLACE DAMAGED JUNCTION BOX LID



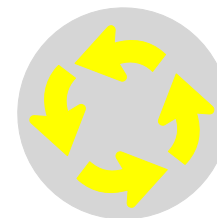
MITIGATE GUY WIRE OBSTRUCTION



MITIGATE DRIVEWAYS THAT ARE NON-ADA COMPLIANT OR CAN BE COMBINED



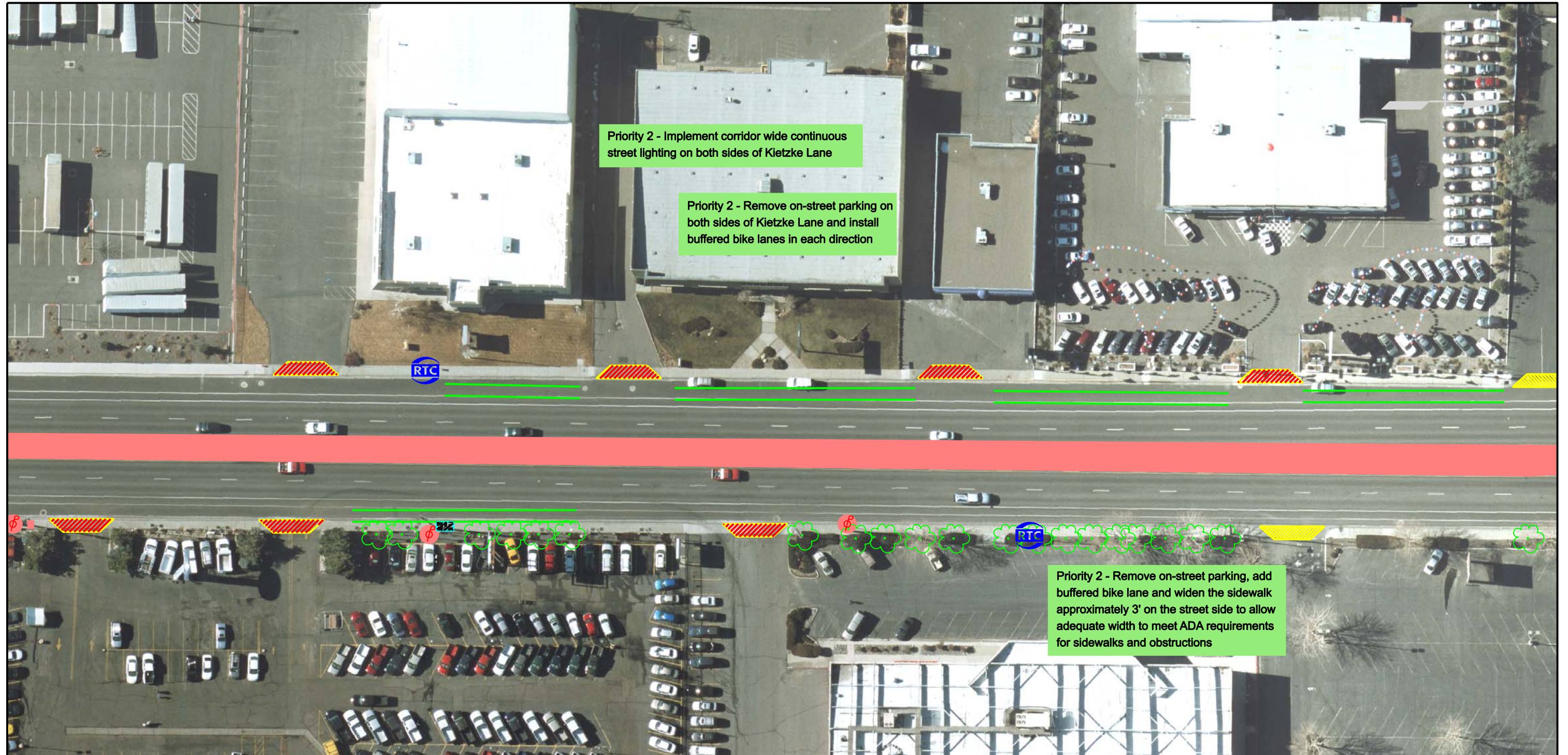
MITIGATE PEDESTRIAN RAMPS THAT ARE NON-ADA COMPLIANT / MISSING RAMPS



POSSIBLE LOCATION FOR FUTURE ROUNDABOUT

* Priority 2 - Improvements that can be included in a future NDOT or RTC project.

Priority 3 - Improvements that can be included in a long range improvement plan.



Priority 2 - Implement corridor wide continuous street lighting on both sides of Kietzke Lane

Priority 2 - Remove on-street parking on both sides of Kietzke Lane and install buffered bike lanes in each direction

Priority 2 - Remove on-street parking, add buffered bike lane and widen the sidewalk approximately 3' on the street side to allow adequate width to meet ADA requirements for sidewalks and obstructions

ALL INFORMATION PRESENTED IS PRELIMINARY
SUBJECT TO REVISION

KIETZKE LANE SAFETY MANAGEMENT PLAN

PRIORITY 2 AND 3 RECOMMENDATIONS

KIETZKE LANE SAFETY MANAGMENT PLAN

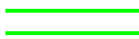
* PRIORITY 2 and 3 RECOMMENDATIONS LEGEND



TRAFFIC SIGNAL CONTROL



DRIVEWAYS



ON STREET PARKING



ON STREE PARKING UTILIZED DURING 5/22/12 SURVEY



EXISTING MEDIAN ISLAND



MITIGATE DRIVEWAYS THAT ARE BLOCKED OR CLOSED/REPLACE WITH SIDEWALK AND CURB / GUTTER



PROPOSED MEDIAN ISLANDS



MITIGATE SIGNAL HEAD ALIGNMENT AND INSTALL RETRO-REFLECTIVE BACKPLATES



REPLACE DAMAGED SIDEWALK



REPLACE MISSING SIDEWALK WITH NEW SIDEWALK, C&G



BIKE LANE LESS THAN 5' WIDE



MITIGATE UTILITY POLE - OBSTRUCTION / CLEAR ZONE ISSUE



SWEEPING RIGHT TURN LANES



MITIGATE MISSING BIKE LANE WITH INSTALLATION OF NEW BIKE LANE



MITIGATE SIGNAL CONTROLLER CABINET OBSTRUCTION



MITIGATE SIGNAL POLE OBSTRUCTION



MITIGATE FIRE HYDRANT OBSTRUCTION



REPLACE DAMAGED JUNCTION BOX LID



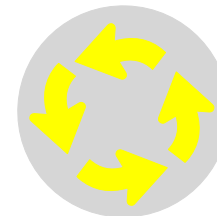
MITIGATE GUY WIRE OBSTRUCTION



MITIGATE DRIVEWAYS THAT ARE NON-ADA COMPLIANT OR CAN BE COMBINED



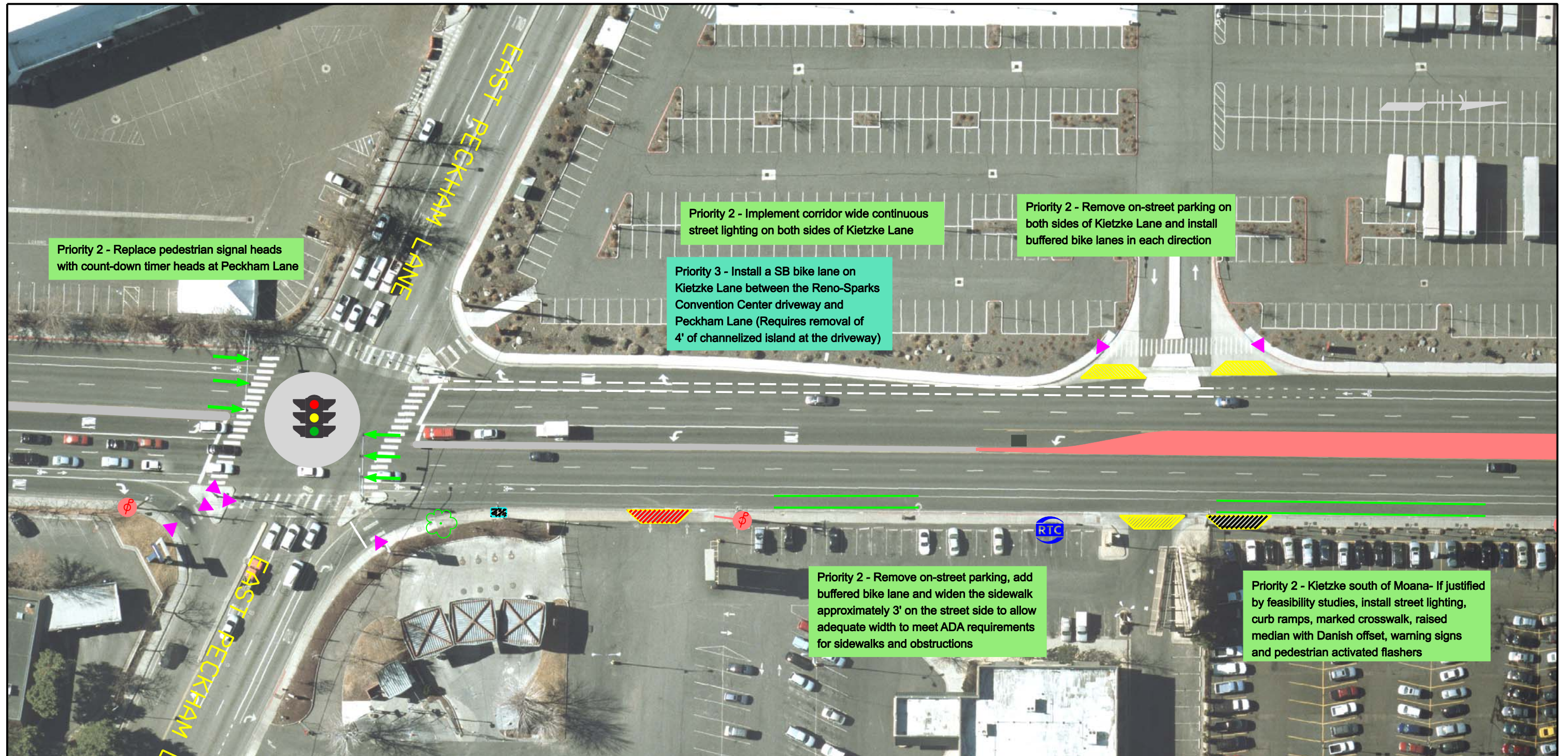
MITIGATE PEDESTRIAN RAMPS THAT ARE NON-ADA COMPLIANT / MISSING RAMPS



POSSIBLE LOCATION FOR FUTURE ROUNDABOUT

* Priority 2 - Improvements that can be included in a future NDOT or RTC project.

Priority 3 - Improvements that can be included in a long range improvement plan.



Priority 2 - Replace pedestrian signal heads with count-down timer heads at Peckham Lane

Priority 2 - Implement corridor wide continuous street lighting on both sides of Kietzke Lane

Priority 2 - Remove on-street parking on both sides of Kietzke Lane and install buffered bike lanes in each direction

Priority 3 - Install a SB bike lane on Kietzke Lane between the Reno-Sparks Convention Center driveway and Peckham Lane (Requires removal of 4' of channelized island at the driveway)

Priority 2 - Remove on-street parking, add buffered bike lane and widen the sidewalk approximately 3' on the street side to allow adequate width to meet ADA requirements for sidewalks and obstructions

Priority 2 - Kietzke south of Moana- If justified by feasibility studies, install street lighting, curb ramps, marked crosswalk, raised median with Danish offset, warning signs and pedestrian activated flashers

ALL INFORMATION PRESENTED IS PRELIMINARY
SUBJECT TO REVISION

KIETZKE LANE SAFETY MANAGEMENT PLAN PRIORITY 2 AND 3 RECOMMENDATIONS

STATE OF NEVADA
DEPARTMENT OF TRANSPORTATION
KIETZKE LANE SAFETY MANAGEMENT PLAN



KIETZKE LANE SAFETY MANAGMENT PLAN

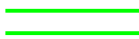
* PRIORITY 2 and 3 RECOMMENDATIONS LEGEND



TRAFFIC SIGNAL CONTROL



DRIVEWAYS



ON STREET PARKING



ON STREE PARKING UTILIZED DURING 5/22/12 SURVEY



EXISTING MEDIAN ISLAND



MITIGATE DRIVEWAYS THAT ARE BLOCKED OR CLOSED/REPLACE WITH SIDEWALK AND CURB / GUTTER



PROPOSED MEDIAN ISLANDS



MITIGATE SIGNAL HEAD ALIGNMENT AND INSTALL RETRO-REFLECTIVE BACKPLATES



REPLACE DAMAGED SIDEWALK



REPLACE MISSING SIDEWALK WITH NEW SIDEWALK, C&G



BIKE LANE LESS THAN 5' WIDE



MITIGATE UTILITY POLE - OBSTRUCTION / CLEAR ZONE ISSUE



SWEEPING RIGHT TURN LANES



MITIGATE MISSING BIKE LANE WITH INSTALLATION OF NEW BIKE LANE



MITIGATE SIGNAL CONTROLLER CABINET OBSTRUCTION



MITIGATE SIGNAL POLE OBSTRUCTION



MITIGATE FIRE HYDRANT OBSTRUCTION



REPLACE DAMAGED JUNCTION BOX LID



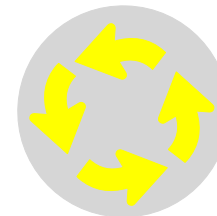
MITIGATE GUY WIRE OBSTRUCTION



MITIGATE DRIVEWAYS THAT ARE NON-ADA COMPLIANT OR CAN BE COMBINED



MITIGATE PEDESTRIAN RAMPS THAT ARE NON-ADA COMPLIANT / MISSING RAMPS



POSSIBLE LOCATION FOR FUTURE ROUNDABOUT

* Priority 2 - Improvements that can be included in a future NDOT or RTC project.

Priority 3 - Improvements that can be included in a long range improvement plan.



ALL INFORMATION PRESENTED IS PRELIMINARY
SUBJECT TO REVISION

KIETZKE LANE SAFETY MANAGEMENT PLAN PRIORITY 2 AND 3 RECOMMENDATIONS

KIETZKE LANE SAFETY MANAGMENT PLAN

* PRIORITY 2 and 3 RECOMMENDATIONS LEGEND



TRAFFIC SIGNAL CONTROL



DRIVEWAYS



ON STREET PARKING



ON STREE PARKING UTILIZED DURING 5/22/12 SURVEY



EXISTING MEDIAN ISLAND



MITIGATE DRIVEWAYS THAT ARE BLOCKED OR CLOSED/REPLACE WITH SIDEWALK AND CURB / GUTTER



PROPOSED MEDIAN ISLANDS



MITIGATE SIGNAL HEAD ALIGNMENT AND INSTALL RETRO-REFLECTIVE BACKPLATES



REPLACE DAMAGED SIDEWALK



REPLACE MISSING SIDEWALK WITH NEW SIDEWALK, C&G



BIKE LANE LESS THAN 5' WIDE



MITIGATE UTILITY POLE - OBSTRUCTION / CLEAR ZONE ISSUE



SWEEPING RIGHT TURN LANES



MITIGATE MISSING BIKE LANE WITH INSTALLATION OF NEW BIKE LANE



MITIGATE SIGNAL CONTROLLER CABINET OBSTRUCTION



MITIGATE SIGNAL POLE OBSTRUCTION



MITIGATE FIRE HYDRANT OBSTRUCTION



REPLACE DAMAGED JUNCTION BOX LID



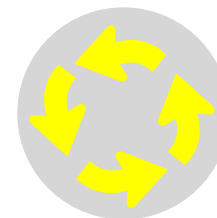
MITIGATE GUY WIRE OBSTRUCTION



MITIGATE DRIVEWAYS THAT ARE NON-ADA COMPLIANT OR CAN BE COMBINED



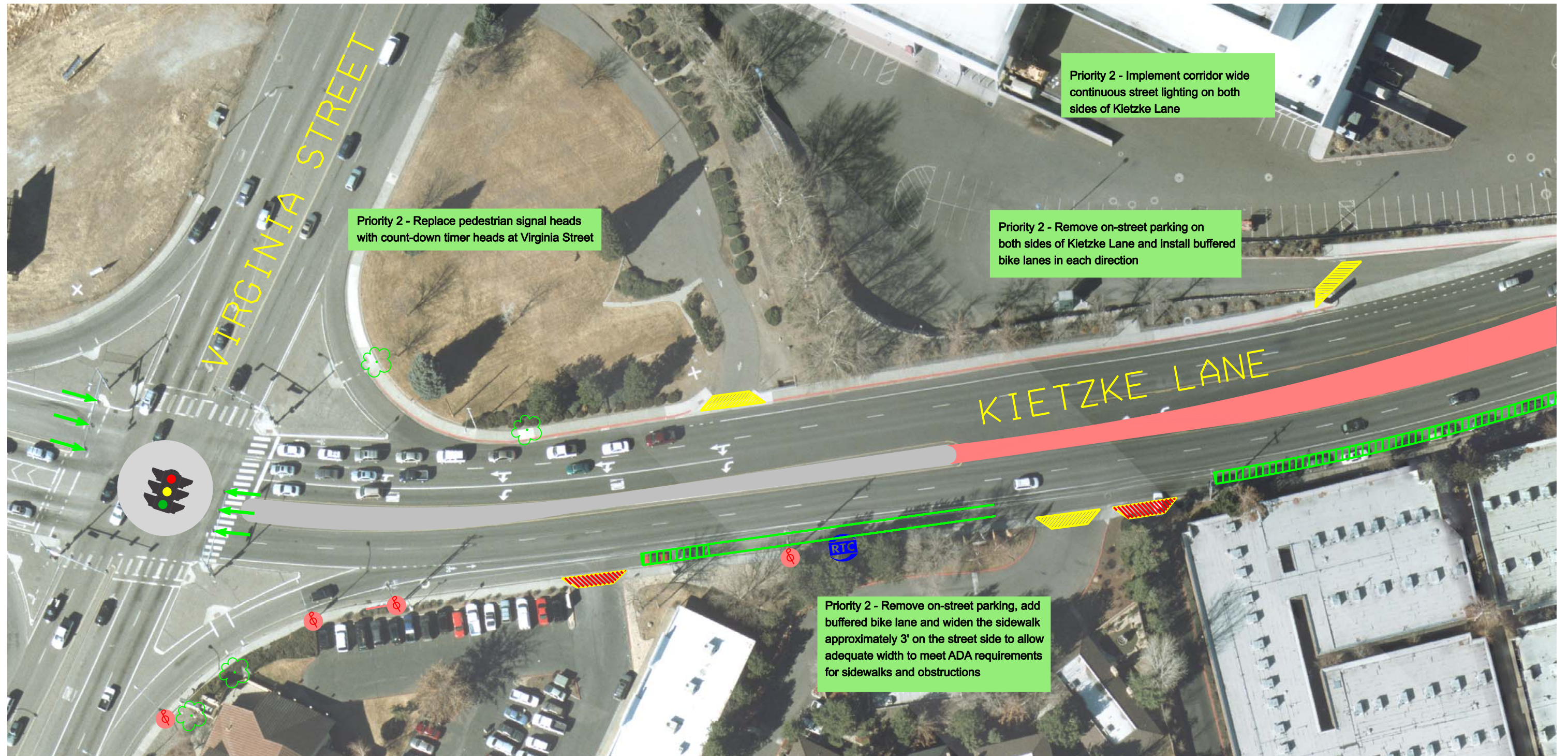
MITIGATE PEDESTRIAN RAMPS THAT ARE NON-ADA COMPLIANT / MISSING RAMPS



POSSIBLE LOCATION FOR FUTURE ROUNDABOUT

* Priority 2 - Improvements that can be included in a future NDOT or RTC project.

Priority 3 - Improvements that can be included in a long range improvement plan.



Priority 2 - Replace pedestrian signal heads with count-down timer heads at Virginia Street

Priority 2 - Implement corridor wide continuous street lighting on both sides of Kietzke Lane

Priority 2 - Remove on-street parking on both sides of Kietzke Lane and install buffered bike lanes in each direction

Priority 2 - Remove on-street parking, add buffered bike lane and widen the sidewalk approximately 3' on the street side to allow adequate width to meet ADA requirements for sidewalks and obstructions

ALL INFORMATION PRESENTED IS PRELIMINARY
SUBJECT TO REVISION

KIETZKE LANE SAFETY MANAGEMENT PLAN PRIORITY 2 AND 3 RECOMMENDATIONS