



Community Gathers for Public Hearing



NDOT Senior Project Manager Nick Johnson presented an overview and update. Conceptual illustration: shared-use path (preliminary and subject to revision)

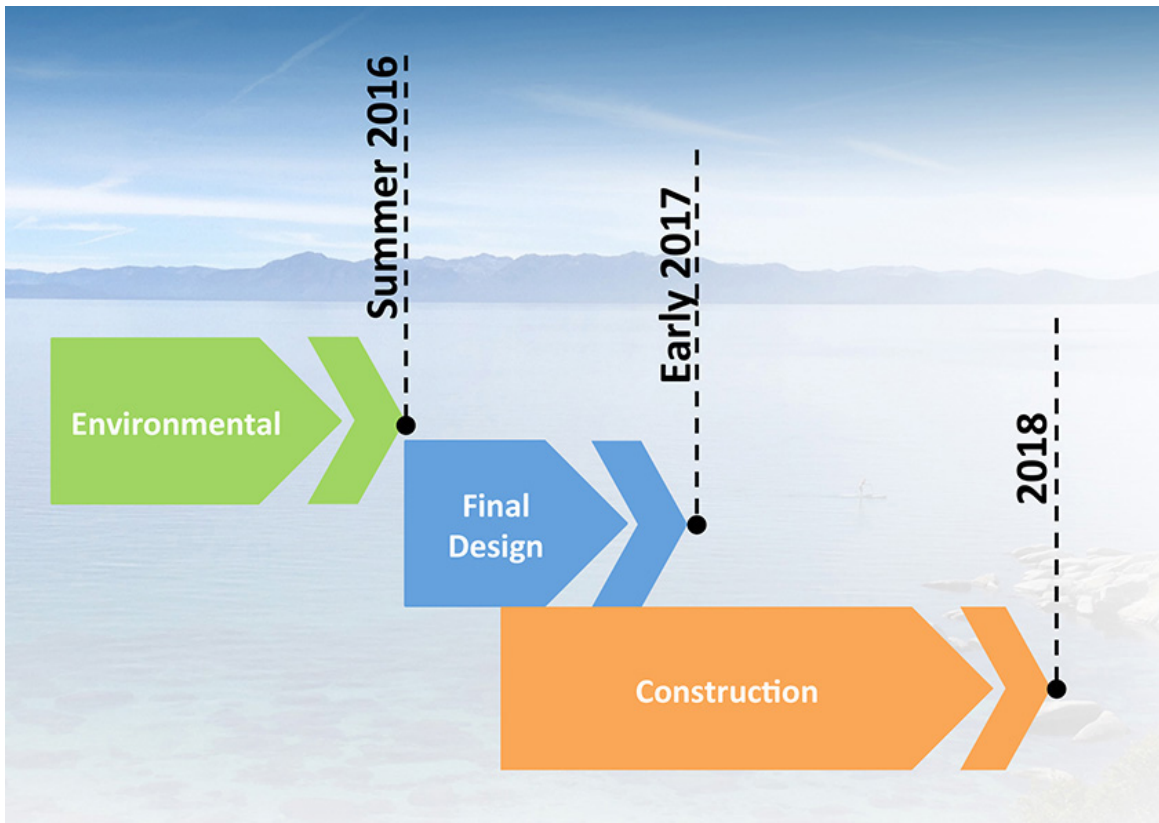
On Tuesday, April 26, 2016, more than 80 members of surrounding communities gathered at The Chateau at Incline Village for an update on Phase 1 of the [SR 28 Shared Use Path and Safety/Stormwater Enhancements Project](#). The public hearing, hosted by the [Nevada Department of Transportation \(NDOT\)](#), provided information on the upcoming construction of the three-mile shared-use path from Incline Village to Sand Harbor.

In a visual presentation, NDOT Senior Project Manager Nick Johnson, PE, CPM, also shared design elements and plans for the other three project phases, as well as background on the project and the 13 agencies behind it.

Following the presentation, members of the audience had an opportunity to ask questions and provide feedback during an open comment period. Attendees were also welcome to peruse maps, charts and exhibits of the project plans and schedule.

[KTVN Channel 2](#) - Reno covered the hearing, offering those who couldn't attend a look at existing conditions and proposed solutions. The project takes an integrated approach to improving safety, mobility, water quality and recreational access in the SR 28 corridor by adding the paved path, parking areas, an undercrossing, emergency turnouts, centerline rumble strips and erosion control/water quality improvements.

NDOT Board Takes First Step



Major milestones in the anticipated timeline for the SR 28 project

On Monday May 9, 2016, the NDOT [Board of Directors](#) took step one of Phase 1 construction for the [State Route \(SR\) 28 project](#). The Board, including Governor Brian Sandoval, approved a preconstruction contract with Granite Construction for the shared-use path from Incline Village south to Sand Harbor.

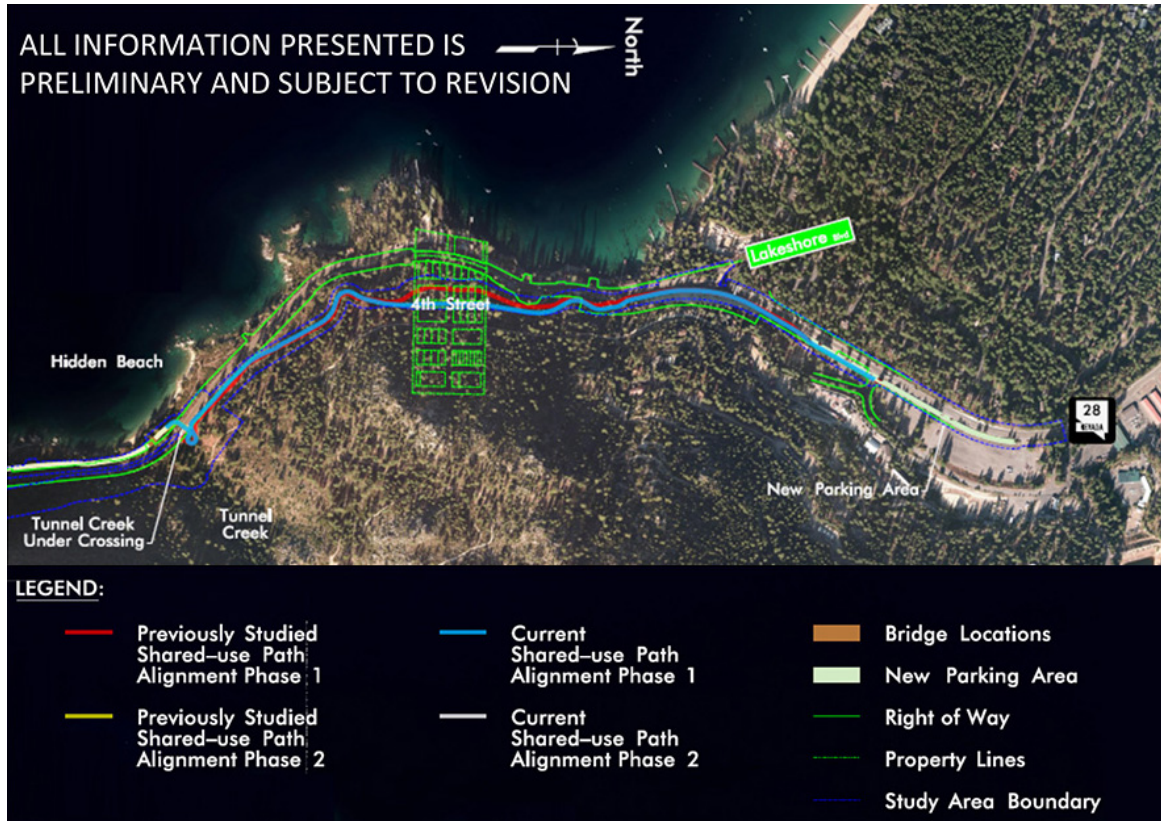
Preconstruction is ongoing, overlapping final design and in preparation for the fall start on the three miles of construction that will also include road and parking improvements plus protection for environmentally sensitive areas. The project will be constructed over multiple years. Funding is in place, including a \$12 million federal grant, Nevada road funding for safety and environmental improvements and private donations.

Area residents and visitors can check the SR 28 project page on NDOT's website for periodic schedule updates. According to [NDOT](#), which is the lead agency on the project, over the next three years, area residents and visitors will likely see:

- construction of the shared-use path with an undercrossing at Tunnel Creek
- creation of new parking areas near Ponderosa Ranch and Tunnel Creek Cafe
- implementation of erosion control and other water quality, roadside and traffic safety enhancements

Recognizing the construction challenges, such as steep terrain, limited access and environmentally sensitive areas, NDOT's contract with Granite Construction designates the company as a Construction Manager at Risk (CMAR) provider. Under CMAR, the construction contractor will work side by side with the engineers in the final design.

4th Street Alignment Profile



Current (blue) and previous (red) alignments ([click for larger view](#))

The SR 28 shared-use path will begin near Ponderosa Ranch Road with the trail alignment staying on the east side of SR 28 for the first mile to Tunnel Creek. Design for this first segment was challenging with the steep topography and existing homes nestled tightly along the highway.

Translating the alignment to the trail experience, it will begin climbing, with a 5-8% grade, just south of Lakeshore Dr. and offer an incredible view of the Incline Village shoreline. Then it will dip into a forested environment for approximately 500 ft., as it crosses through 4th Street.

Pedestrians and bicyclists will be treated to more eye-popping east shore views as they pass around Rocky Pt. Thanks to many donors and the Tahoe Fund, there will be five vista points along this segment for relaxing, reading interpretive signs and enjoying the views.

With safety as an NDOT priority, the 4th Street alignment will lead to a tunnel to be constructed under SR 28. This singular decision will bring bicyclists and pedestrians safely to Hidden Beach and the east shore coves along the next two miles to Sand Harbor.



Nevada Department of Transportation
1263 South Stewart Street, Carson City, Nevada 89712
nevadadot.com

