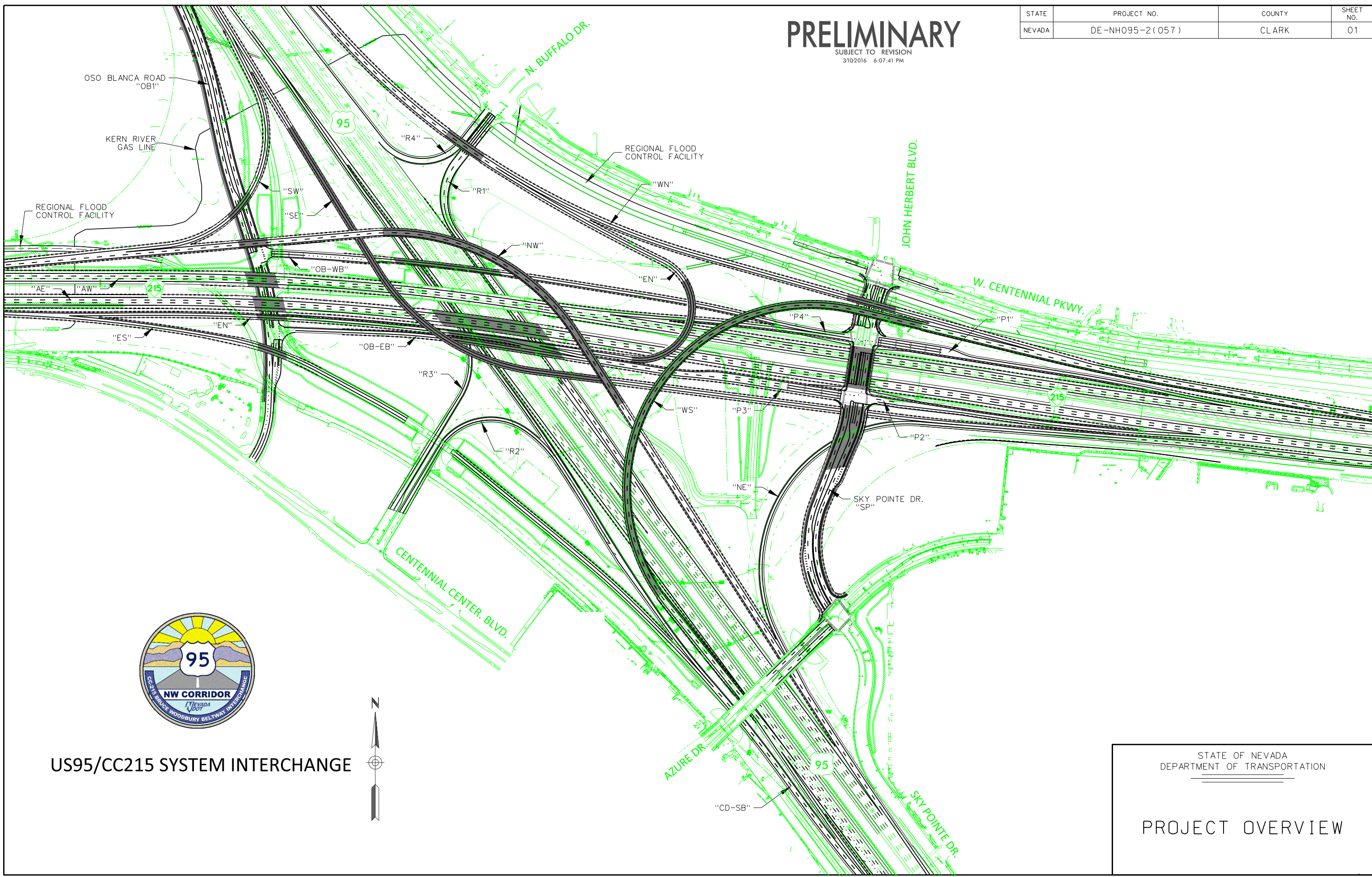


STATE	PROJECT NO.	COUNTY	SHEET NO.
NEVADA	DE-NH095-2(057)	CLARK	01

# PRELIMINARY

SUBJECT TO REVISION  
3/10/2016 6:07:41 PM



## US95/CC215 SYSTEM INTERCHANGE



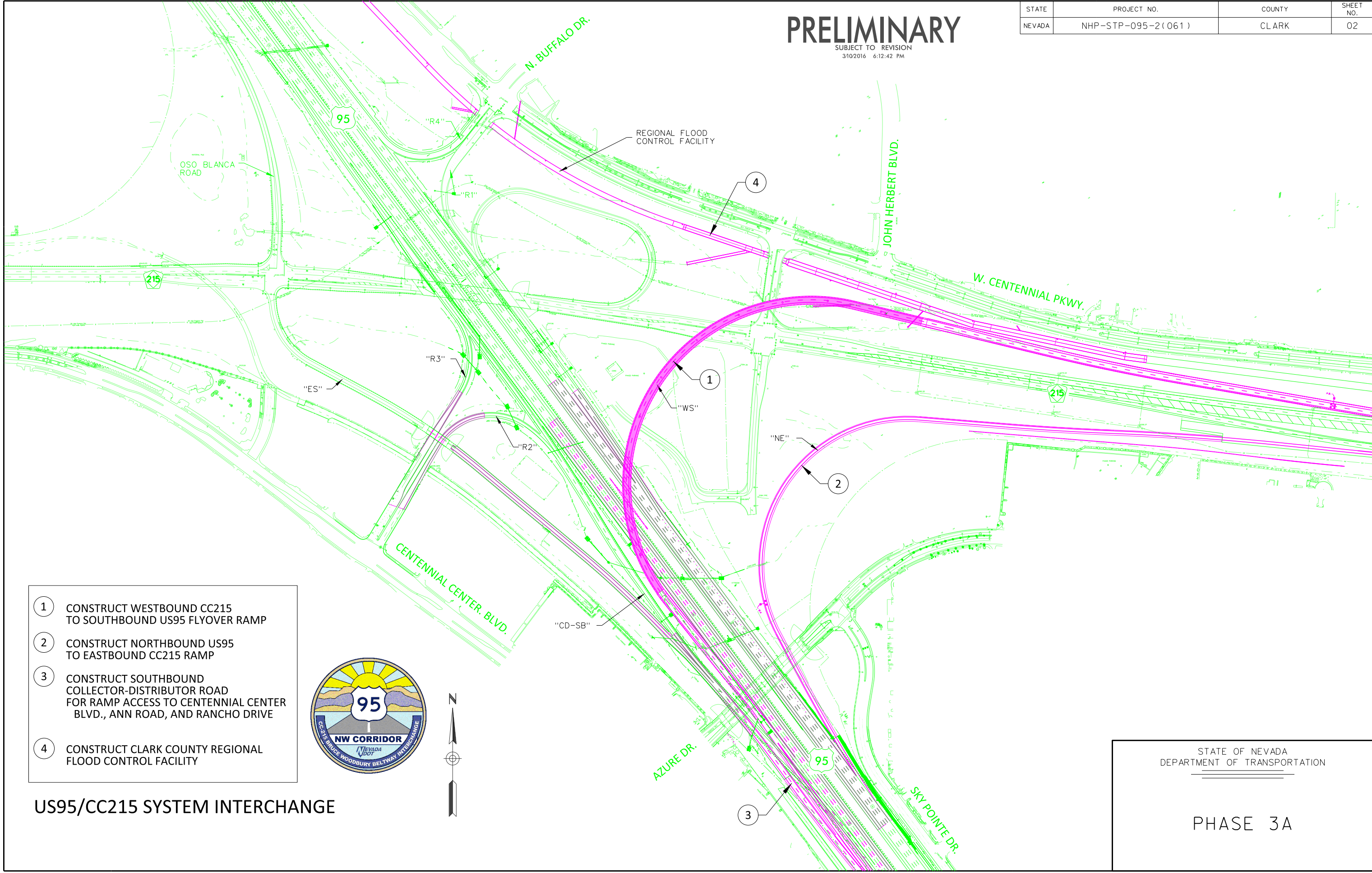
STATE OF NEVADA  
DEPARTMENT OF TRANSPORTATION

---

PROJECT OVERVIEW

STATE	PROJECT NO.	COUNTY	SHEET NO.
NEVADA	NHP-STP-095-2(061)	CLARK	02

**PRELIMINARY**  
 SUBJECT TO REVISION  
 3/10/2016 6:12:42 PM



- ① CONSTRUCT WESTBOUND CC215 TO SOUTHBOUND US95 FLYOVER RAMP
- ② CONSTRUCT NORTHBOUND US95 TO EASTBOUND CC215 RAMP
- ③ CONSTRUCT SOUTHBOUND COLLECTOR-DISTRIBUTOR ROAD FOR RAMP ACCESS TO CENTENNIAL CENTER BLVD., ANN ROAD, AND RANCHO DRIVE
- ④ CONSTRUCT CLARK COUNTY REGIONAL FLOOD CONTROL FACILITY



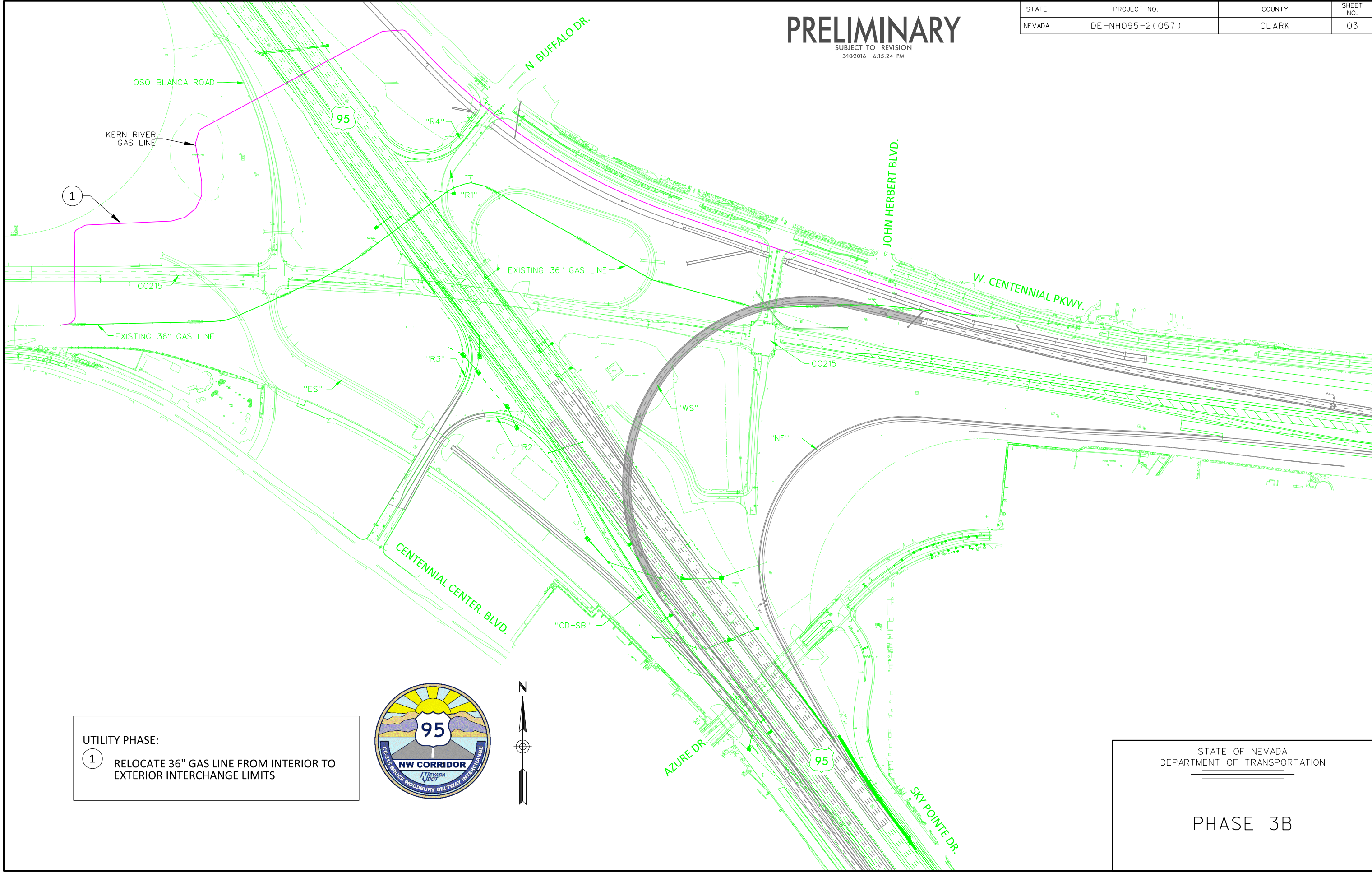
**US95/CC215 SYSTEM INTERCHANGE**

STATE OF NEVADA  
 DEPARTMENT OF TRANSPORTATION  
 PHASE 3A

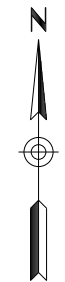
STATE	PROJECT NO.	COUNTY	SHEET NO.
NEVADA	DE-NH095-2(057)	CLARK	03

# PRELIMINARY

SUBJECT TO REVISION  
3/10/2016 6:15:24 PM



UTILITY PHASE:  
 ① RELOCATE 36" GAS LINE FROM INTERIOR TO EXTERIOR INTERCHANGE LIMITS

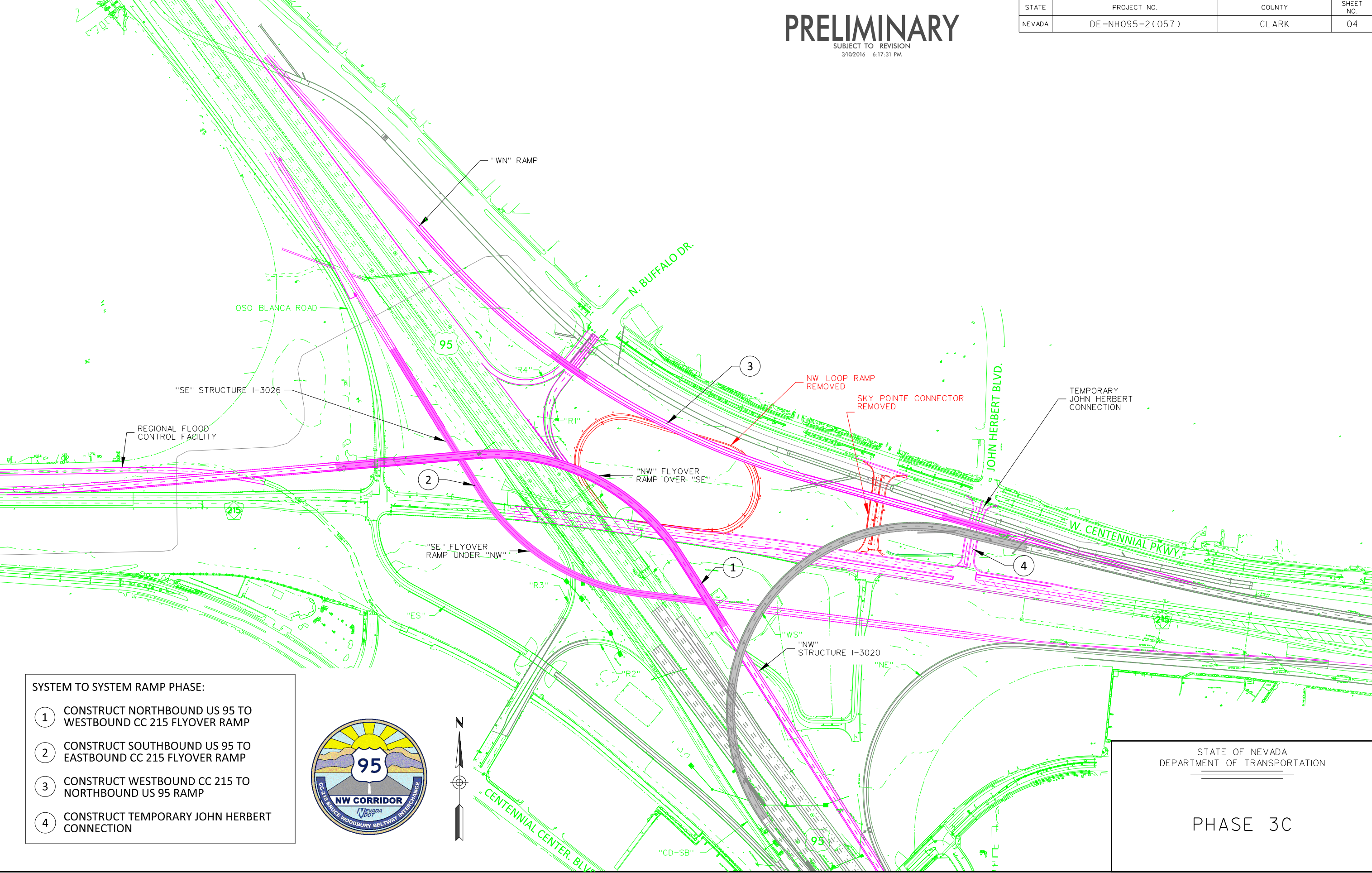


STATE OF NEVADA  
 DEPARTMENT OF TRANSPORTATION  
 PHASE 3B

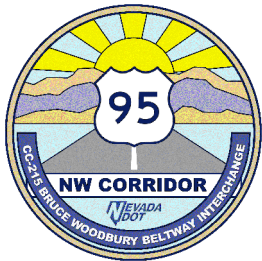
# PRELIMINARY

SUBJECT TO REVISION  
3/10/2016 6:17:31 PM

STATE	PROJECT NO.	COUNTY	SHEET NO.
NEVADA	DE-NH095-2(057)	CLARK	04



- SYSTEM TO SYSTEM RAMP PHASE:
- ① CONSTRUCT NORTHBOUND US 95 TO WESTBOUND CC 215 FLYOVER RAMP
  - ② CONSTRUCT SOUTHBOUND US 95 TO EASTBOUND CC 215 FLYOVER RAMP
  - ③ CONSTRUCT WESTBOUND CC 215 TO NORTHBOUND US 95 RAMP
  - ④ CONSTRUCT TEMPORARY JOHN HERBERT CONNECTION



STATE OF NEVADA  
DEPARTMENT OF TRANSPORTATION

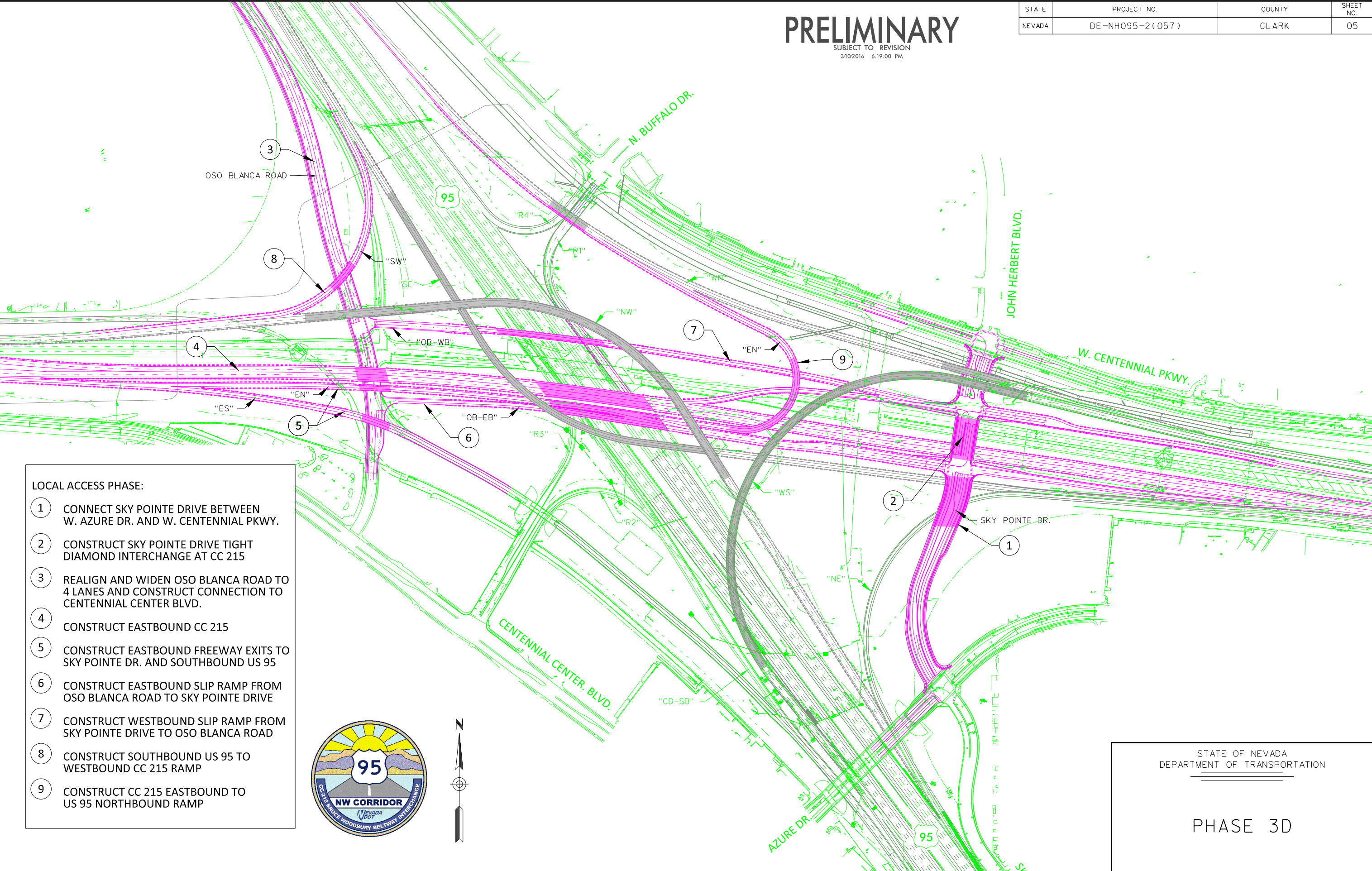
---

PHASE 3C

# PRELIMINARY

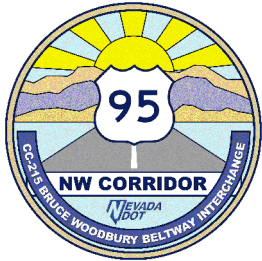
SUBJECT TO REVISION  
3/10/2016 6:19:00 PM

STATE	PROJECT NO.	COUNTY	SHEET NO.
NEVADA	DE-NH095-2(057)	CLARK	05



**LOCAL ACCESS PHASE:**

- 1 CONNECT SKY POINTE DRIVE BETWEEN W. AZURE DR. AND W. CENTENNIAL PKWY.
- 2 CONSTRUCT SKY POINTE DRIVE TIGHT DIAMOND INTERCHANGE AT CC 215
- 3 REALIGN AND WIDEN OSO BLANCA ROAD TO 4 LANES AND CONSTRUCT CONNECTION TO CENTENNIAL CENTER BLVD.
- 4 CONSTRUCT EASTBOUND CC 215
- 5 CONSTRUCT EASTBOUND FREEWAY EXITS TO SKY POINTE DR. AND SOUTHBOUND US 95
- 6 CONSTRUCT EASTBOUND SLIP RAMP FROM OSO BLANCA ROAD TO SKY POINTE DRIVE
- 7 CONSTRUCT WESTBOUND SLIP RAMP FROM SKY POINTE DRIVE TO OSO BLANCA ROAD
- 8 CONSTRUCT SOUTHBOUND US 95 TO WESTBOUND CC 215 RAMP
- 9 CONSTRUCT CC 215 EASTBOUND TO US 95 NORTHBOUND RAMP



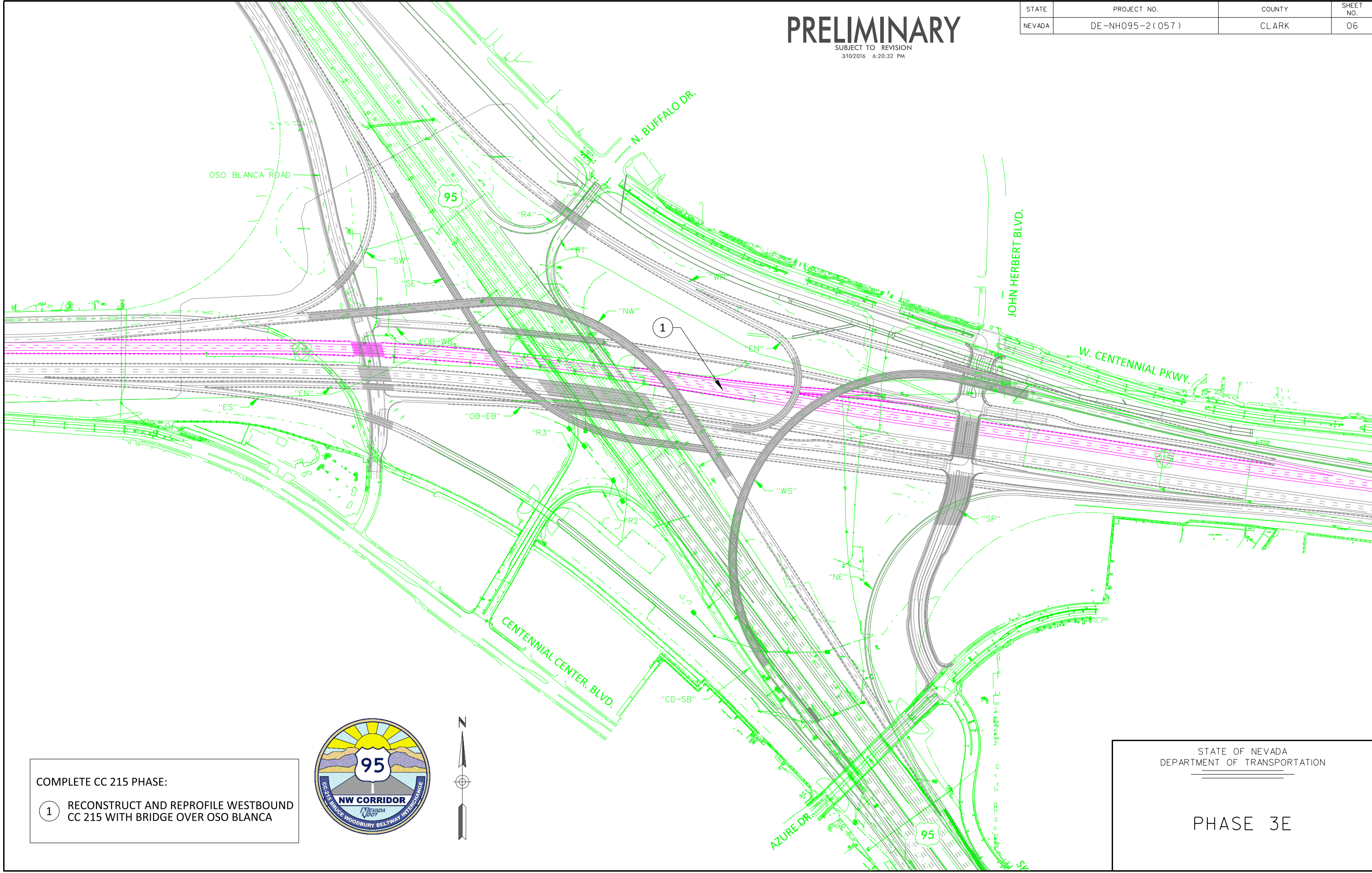
STATE OF NEVADA  
DEPARTMENT OF TRANSPORTATION

PHASE 3D

# PRELIMINARY

SUBJECT TO REVISION  
3/10/2016 6:20:32 PM

STATE	PROJECT NO.	COUNTY	SHEET NO.
NEVADA	DE-NH095-2(057)	CLARK	06



COMPLETE CC 215 PHASE:  
① RECONSTRUCT AND REPROFILE WESTBOUND CC 215 WITH BRIDGE OVER OSO BLANCA



STATE OF NEVADA  
DEPARTMENT OF TRANSPORTATION  
  
PHASE 3E