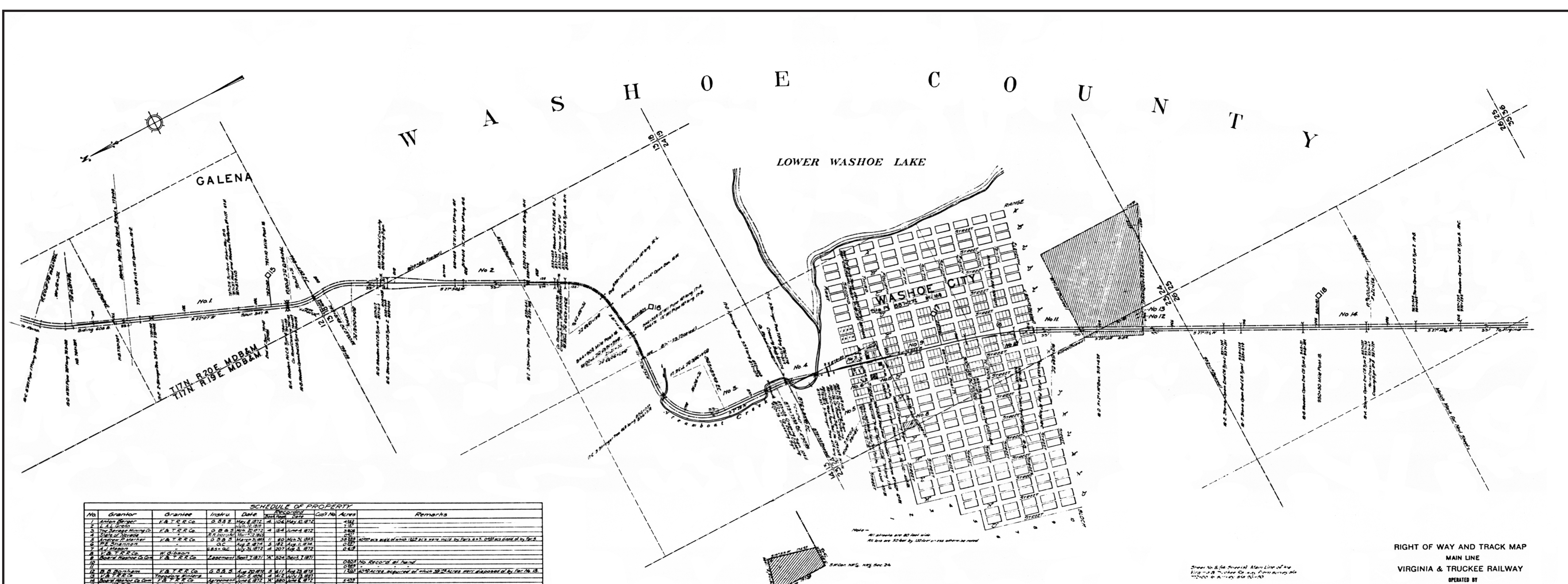
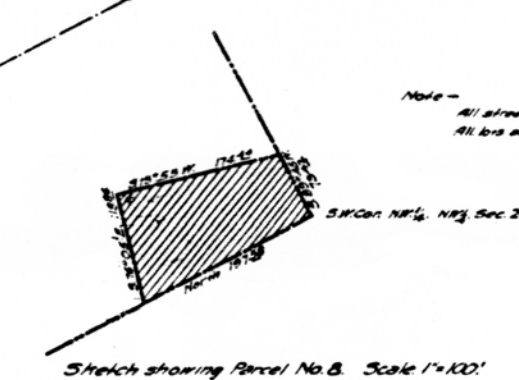


W A S H O E C O U N T Y



SCHEDULE OF PROPERTY						
No.	Grantor	Grantee	Instr.	Date	Acres	Remarks
1	Anton Berger	V. & T. R. R. Co.	2888	May 4, 1872	4.82	
2	L. L. Green	V. & T. R. R. Co.	3000	May 10, 1872	2.90	
3	The Virginia Mining Co.	V. & T. R. R. Co.	3000	May 10, 1872	2.90	
4	State of Nevada	V. & T. R. R. Co.	3000	May 10, 1872	2.90	
5	Virginia Mining Co.	V. & T. R. R. Co.	3000	May 10, 1872	2.90	
6	V. & T. R. R. Co.	V. & T. R. R. Co.	3000	May 10, 1872	2.90	
7	V. & T. R. R. Co.	V. & T. R. R. Co.	3000	May 10, 1872	2.90	
8	V. & T. R. R. Co.	V. & T. R. R. Co.	3000	May 10, 1872	2.90	
9	V. & T. R. R. Co.	V. & T. R. R. Co.	3000	May 10, 1872	2.90	
10	V. & T. R. R. Co.	V. & T. R. R. Co.	3000	May 10, 1872	2.90	
11	V. & T. R. R. Co.	V. & T. R. R. Co.	3000	May 10, 1872	2.90	
12	V. & T. R. R. Co.	V. & T. R. R. Co.	3000	May 10, 1872	2.90	
13	V. & T. R. R. Co.	V. & T. R. R. Co.	3000	May 10, 1872	2.90	
14	V. & T. R. R. Co.	V. & T. R. R. Co.	3000	May 10, 1872	2.90	



Sketch No. 8 of General Plan Line of the Virginia & Truckee Railway, showing the location of Parcel No. 8, and the location of the main line of the railway.

W. H. H. H.
Chief Engineer

RIGHT OF WAY AND TRACK MAP
MAIN LINE
VIRGINIA & TRUCKEE RAILWAY
OPERATED BY
VIRGINIA & TRUCKEE RAILWAY
FROM STATION 772+00 TO STATION 964+90
Scale: 1 Inch = 400 feet
DECEMBER 31st, 1918
OFFICE OF CHIEF ENGINEER
CARSON CITY, NEVADA

V-1.
5.

Revised 10-16-1918