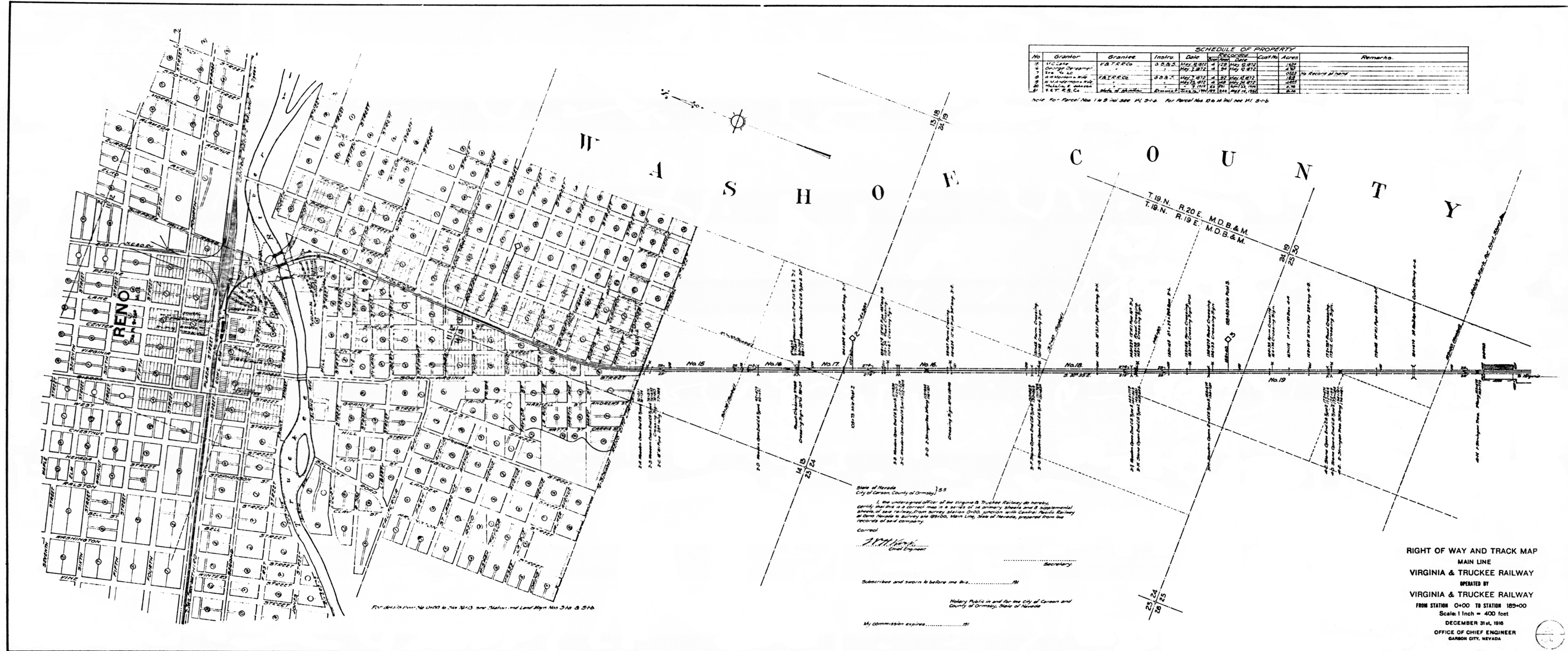


SCHEDULE OF PROPERTY									
No.	Grantor	Grantee	Instr.	Date	Acres	Vol. No.	Page	Remarks	
1	V.C. Case	V.T.R.C.	3885	May 2, 1872	1.25	1872	162		
2	George DeLong	V.T.R.C.	3885	May 2, 1872	1.25	1872	162		
3	Geo. W. Lee	V.T.R.C.	3885	May 2, 1872	1.25	1872	162	No Record at hand	
4	W. A. Johnson	V.T.R.C.	3885	May 2, 1872	1.25	1872	162		
5	W. A. Johnson	V.T.R.C.	3885	May 2, 1872	1.25	1872	162		
6	W. A. Johnson	V.T.R.C.	3885	May 2, 1872	1.25	1872	162		
7	W. A. Johnson	V.T.R.C.	3885	May 2, 1872	1.25	1872	162		
8	W. A. Johnson	V.T.R.C.	3885	May 2, 1872	1.25	1872	162		
9	W. A. Johnson	V.T.R.C.	3885	May 2, 1872	1.25	1872	162		
10	W. A. Johnson	V.T.R.C.	3885	May 2, 1872	1.25	1872	162		

Note: For Parcel No. 14 B see Vol. 14, P. 2. For Parcel No. 15 B see Vol. 14, P. 2.



State of Nevada
 City of Carson, County of Ormsby, ss
 I, the undersigned officer of the Virginia & Truckee Railway do hereby certify that this is a correct map in its entirety of all primary streets and all supplemental streets of said railway from survey station 0+00, junction with Central Pacific Railway at Reno, Nevada to survey station 100+00, Main Line, State of Nevada, prepared from the records of said company.
 Correct

 Chief Engineer
 Subscribed and sworn to before me this _____ 1916
 Notary Public in and for the City of Carson and County of Ormsby, State of Nevada
 My commission expires _____ 1916

RIGHT OF WAY AND TRACK MAP
 MAIN LINE
 VIRGINIA & TRUCKEE RAILWAY
 OPERATED BY
 VIRGINIA & TRUCKEE RAILWAY
 FROM STATION 0+00 TO STATION 100+00
 Scale: 1 inch = 400 feet
 DECEMBER 31st, 1916
 OFFICE OF CHIEF ENGINEER
 CARSON CITY, NEVADA

For details see Nos. 1400 to 1413 and 1415 and Land Right Nos. 348 & 349