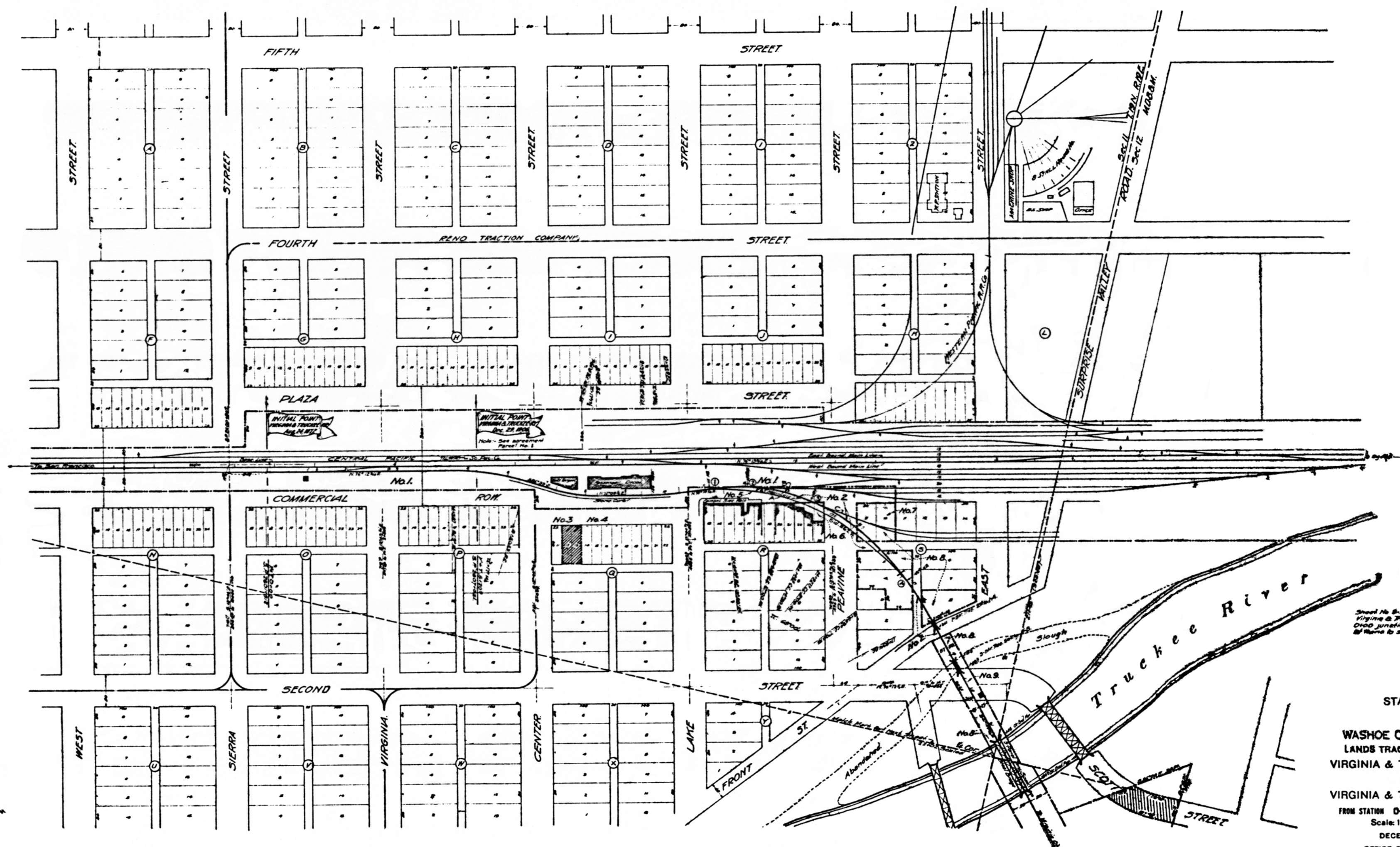
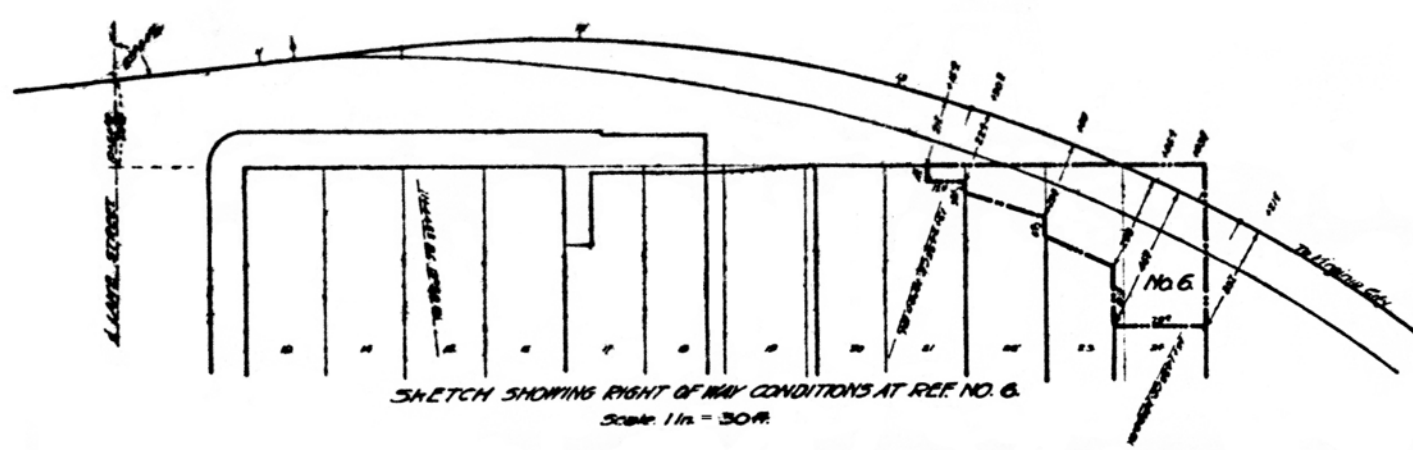


RENO
NEVADA

Sta. P. 9-268 M. 02



SCHEDULE OF PROPERTY								
No.	Grantor	Grantee	Matrix	Date	Reference	Cont. No.	Acres	Remarks
1	F. P. G. Co.	F. A. T. Co.	100-100-100	100-100-100	100-100-100	100-100-100	100-100-100	Old A. Acquired of which Old A. were disposed of by No. 4.
2	F. P. G. Co.	F. A. T. Co.	100-100-100	100-100-100	100-100-100	100-100-100	100-100-100	Old B. Acquired of which Old B. were disposed of by No. 4.
3	F. P. G. Co.	F. A. T. Co.	100-100-100	100-100-100	100-100-100	100-100-100	100-100-100	Old C. Acquired of which Old C. were disposed of by No. 4.
4	F. P. G. Co.	F. A. T. Co.	100-100-100	100-100-100	100-100-100	100-100-100	100-100-100	Old D. Acquired of which Old D. were disposed of by No. 4.
5	F. P. G. Co.	F. A. T. Co.	100-100-100	100-100-100	100-100-100	100-100-100	100-100-100	Old E. Acquired of which Old E. were disposed of by No. 4.
6	F. P. G. Co.	F. A. T. Co.	100-100-100	100-100-100	100-100-100	100-100-100	100-100-100	Old F. Acquired of which Old F. were disposed of by No. 4.



Small No. 6-12 (shown) show line of the Virginia & Truckee Railway from survey of 1898, in accordance with General Order No. 10, and all maps to survey of 1898.

STATION MAP
RENO
WASHOE COUNTY NEVADA
LANDS TRACKS & STRUCTURES
VIRGINIA & TRUCKEE RAILWAY
OPERATED BY
VIRGINIA & TRUCKEE RAILWAY
FROM STATION 0+00 TO STATION 22+02
Scale: 1 inch = 400 feet
DECEMBER 31st, 1918
OFFICE OF CHIEF ENGINEER
GARSON CITY, NEVADA

