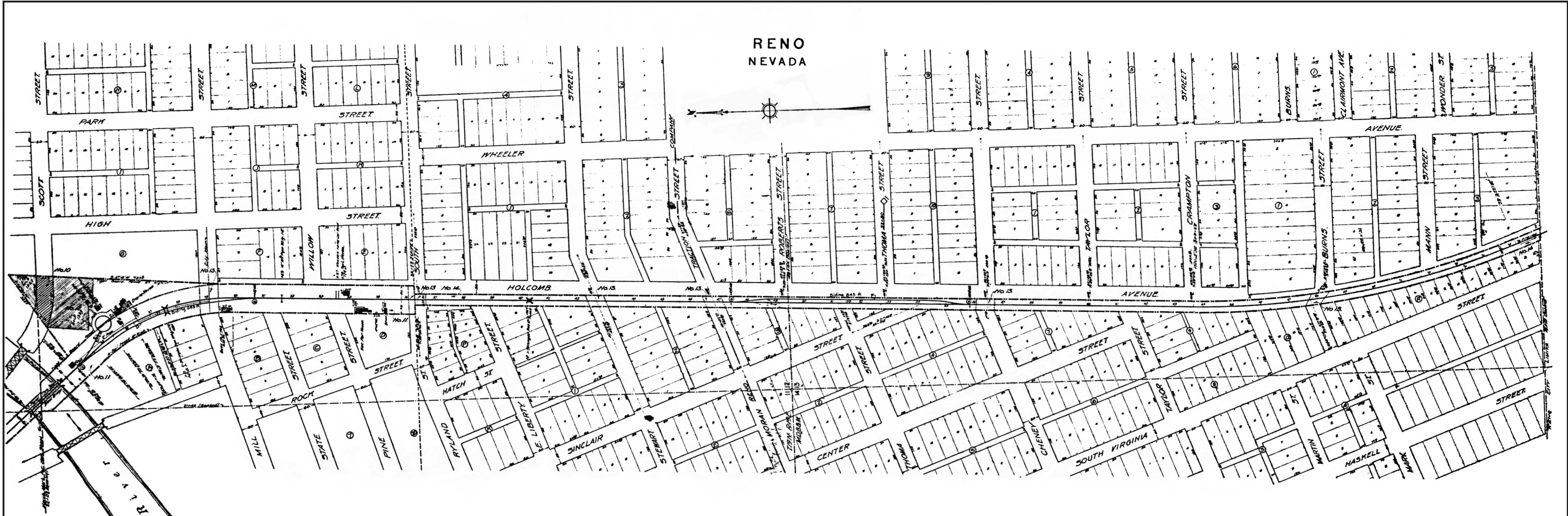


RENO
NEVADA



SCHEDULE OF PROPERTY						
No.	Grantor	Grantee	Instr.	Date	Acres	Remarks
10	F. & T. Ry.	City of Reno	S.B.S.	Apr. 24, 1902	2.50	
11	Thomas & Nevada Ry. Co.	F.R.R.Co.		May 2, 1912	1.12	212 acres reserved of about 652 acres more or less of by Dec. 16, 1912
12	W. H. H. & Co.	F.R.R.Co.		May 2, 1912	1.12	212 acres reserved of about 652 acres more or less of by Dec. 16, 1912
13	A. J. Hinchey & Co.	F.R.R.Co.		May 2, 1912	1.12	212 acres reserved of about 652 acres more or less of by Dec. 16, 1912

Sheet No. 5-1b (2 Shows) Main Line of the Virginia & Truckee Railway, from Berry Sta. 22+00 to Berry Sta. 22+15

W. H. Hinchey
Civil Engineer

STATION MAP
RENO
WASHOE COUNTY NEVADA
LANDS TRACKS & STRUCTURES
VIRGINIA & TRUCKEE RAILWAY
OPERATED BY
VIRGINIA & TRUCKEE RAILWAY
FROM STATION 22+02 TO STATION 22+15
Scale 1 inch = 100 feet
DECEMBER 21st, 1916
OFFICE OF CHIEF ENGINEER
GARDNER CITY, NEVADA

