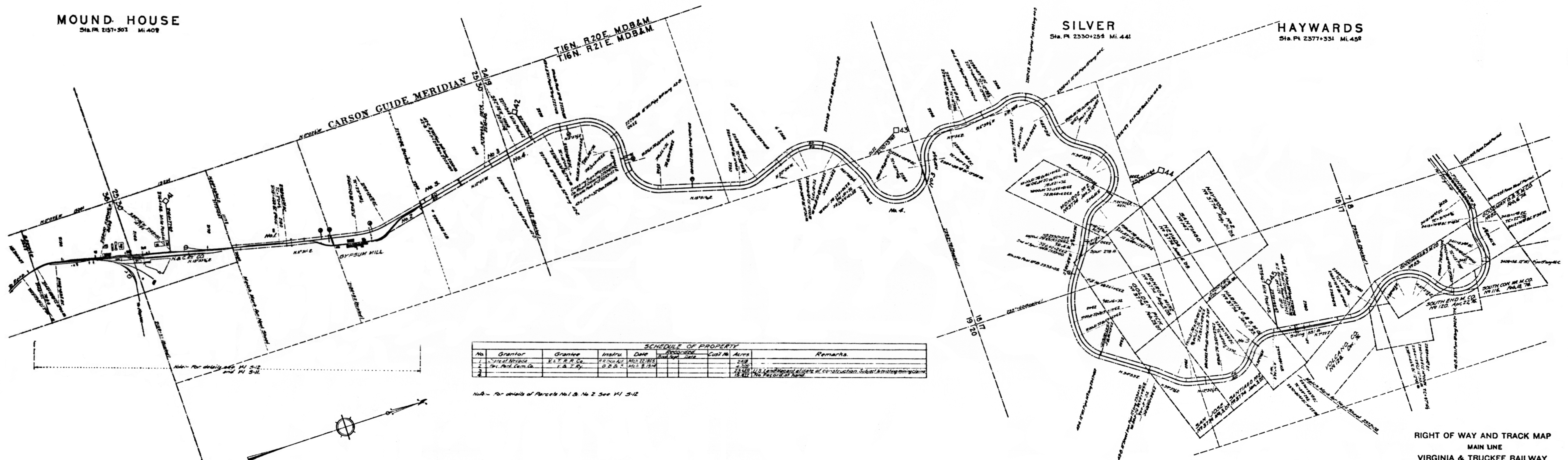


# L Y O N C O U N T Y

**MOUND HOUSE**  
Sta. Pk. 2157+503 Mi. 409

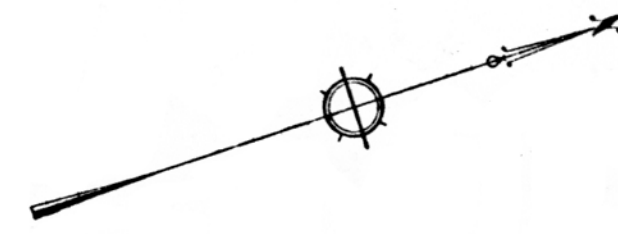
**SILVER**  
Sta. Pk. 2350+258 Mi. 441

**HAYWARDS**  
Sta. Pk. 2377+331 Mi. 452



SCHEDULE OF PROPERTY						
No.	Grantor	Grantee	Instru.	Date	Acres	Remarks
1	State of Nevada	V. & T. R. R. Co.	1872	1872	2.18	
2	Wm. Paulson	V. & T. R. Co.	1873	1873	2.18	
3	Wm. Paulson	V. & T. R. Co.	1873	1873	2.18	

NOTE - For details of Parcels No. 1 & No. 2 See V-1 5-12



Sheet No. 12 (of Sheet 1) Main Line of the Virginia & Truckee Railway from survey site 2157+503 to survey site 2377+331.

*W. Paulson*  
Chief Engineer

**RIGHT OF WAY AND TRACK MAP**  
MAIN LINE  
VIRGINIA & TRUCKEE RAILWAY  
OPERATED BY  
VIRGINIA & TRUCKEE RAILWAY  
FROM STATION 2173+032 TO STATION 2392+00  
Scale: 1 inch = 400 feet  
DECEMBER 31st, 1916  
OFFICE OF CHIEF ENGINEER  
CARSON CITY, NEVADA

V-1  
12

Revised 10-18-16