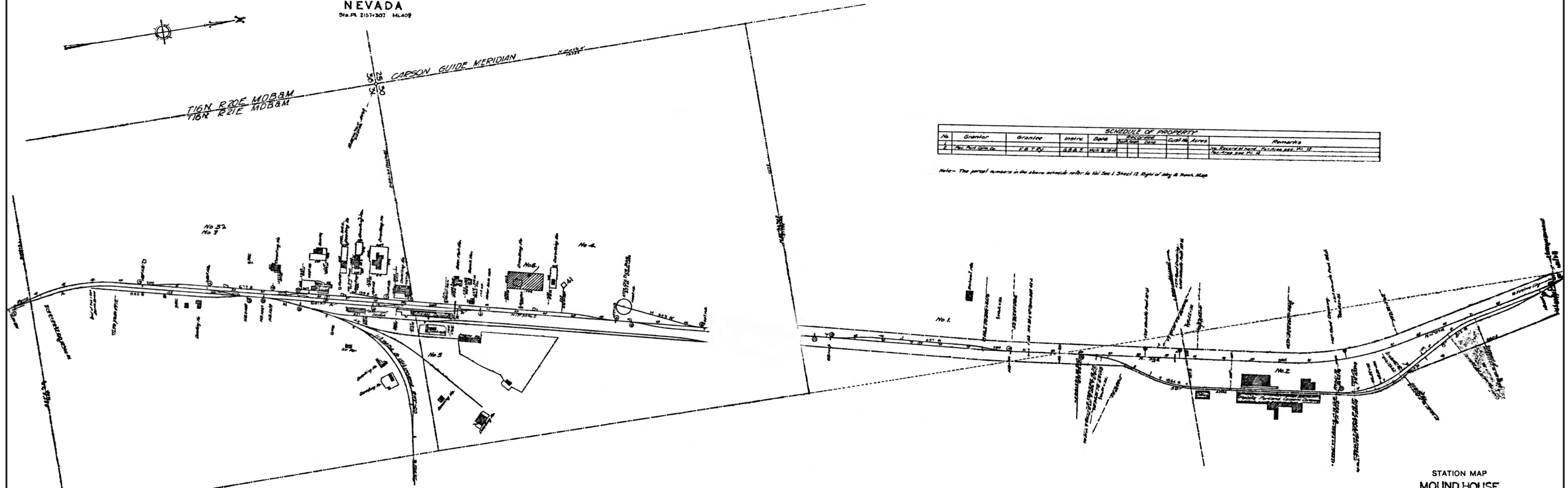


MOUND HOUSE  
NEVADA  
Sta. Pk. 2157+307 ML409



SCHEDULE OF PROPERTY						
No.	Grantor	Grantee	Instr.	Date	Acres	Remarks
1	Wm. Paul Smith	V.A.T.R.C.	1888	10/10/1888	1.00	See Parcel No. 1

Note - The parcel numbers in the above schedule refer to Vol. 1, Sheet 12, Right of Way & Track Map.

SCHEDULE OF PROPERTY						
No.	Grantor	Grantee	Instr.	Date	Acres	Remarks
1	Wm. Paul Smith	V.A.T.R.C.	1888	10/10/1888	1.00	See Parcel No. 1
2	Wm. Paul Smith	V.A.T.R.C.	1888	10/10/1888	1.00	See Parcel No. 2
3	Wm. Paul Smith	V.A.T.R.C.	1888	10/10/1888	1.00	See Parcel No. 3
4	Wm. Paul Smith	V.A.T.R.C.	1888	10/10/1888	1.00	See Parcel No. 4
5	Wm. Paul Smith	V.A.T.R.C.	1888	10/10/1888	1.00	See Parcel No. 5
6	Wm. Paul Smith	V.A.T.R.C.	1888	10/10/1888	1.00	See Parcel No. 6
7	Wm. Paul Smith	V.A.T.R.C.	1888	10/10/1888	1.00	See Parcel No. 7
8	Wm. Paul Smith	V.A.T.R.C.	1888	10/10/1888	1.00	See Parcel No. 8
9	Wm. Paul Smith	V.A.T.R.C.	1888	10/10/1888	1.00	See Parcel No. 9
10	Wm. Paul Smith	V.A.T.R.C.	1888	10/10/1888	1.00	See Parcel No. 10
11	Wm. Paul Smith	V.A.T.R.C.	1888	10/10/1888	1.00	See Parcel No. 11
12	Wm. Paul Smith	V.A.T.R.C.	1888	10/10/1888	1.00	See Parcel No. 12
13	Wm. Paul Smith	V.A.T.R.C.	1888	10/10/1888	1.00	See Parcel No. 13
14	Wm. Paul Smith	V.A.T.R.C.	1888	10/10/1888	1.00	See Parcel No. 14
15	Wm. Paul Smith	V.A.T.R.C.	1888	10/10/1888	1.00	See Parcel No. 15
16	Wm. Paul Smith	V.A.T.R.C.	1888	10/10/1888	1.00	See Parcel No. 16
17	Wm. Paul Smith	V.A.T.R.C.	1888	10/10/1888	1.00	See Parcel No. 17
18	Wm. Paul Smith	V.A.T.R.C.	1888	10/10/1888	1.00	See Parcel No. 18
19	Wm. Paul Smith	V.A.T.R.C.	1888	10/10/1888	1.00	See Parcel No. 19
20	Wm. Paul Smith	V.A.T.R.C.	1888	10/10/1888	1.00	See Parcel No. 20
21	Wm. Paul Smith	V.A.T.R.C.	1888	10/10/1888	1.00	See Parcel No. 21
22	Wm. Paul Smith	V.A.T.R.C.	1888	10/10/1888	1.00	See Parcel No. 22
23	Wm. Paul Smith	V.A.T.R.C.	1888	10/10/1888	1.00	See Parcel No. 23
24	Wm. Paul Smith	V.A.T.R.C.	1888	10/10/1888	1.00	See Parcel No. 24
25	Wm. Paul Smith	V.A.T.R.C.	1888	10/10/1888	1.00	See Parcel No. 25
26	Wm. Paul Smith	V.A.T.R.C.	1888	10/10/1888	1.00	See Parcel No. 26
27	Wm. Paul Smith	V.A.T.R.C.	1888	10/10/1888	1.00	See Parcel No. 27
28	Wm. Paul Smith	V.A.T.R.C.	1888	10/10/1888	1.00	See Parcel No. 28
29	Wm. Paul Smith	V.A.T.R.C.	1888	10/10/1888	1.00	See Parcel No. 29
30	Wm. Paul Smith	V.A.T.R.C.	1888	10/10/1888	1.00	See Parcel No. 30
31	Wm. Paul Smith	V.A.T.R.C.	1888	10/10/1888	1.00	See Parcel No. 31
32	Wm. Paul Smith	V.A.T.R.C.	1888	10/10/1888	1.00	See Parcel No. 32
33	Wm. Paul Smith	V.A.T.R.C.	1888	10/10/1888	1.00	See Parcel No. 33
34	Wm. Paul Smith	V.A.T.R.C.	1888	10/10/1888	1.00	See Parcel No. 34
35	Wm. Paul Smith	V.A.T.R.C.	1888	10/10/1888	1.00	See Parcel No. 35
36	Wm. Paul Smith	V.A.T.R.C.	1888	10/10/1888	1.00	See Parcel No. 36
37	Wm. Paul Smith	V.A.T.R.C.	1888	10/10/1888	1.00	See Parcel No. 37
38	Wm. Paul Smith	V.A.T.R.C.	1888	10/10/1888	1.00	See Parcel No. 38
39	Wm. Paul Smith	V.A.T.R.C.	1888	10/10/1888	1.00	See Parcel No. 39
40	Wm. Paul Smith	V.A.T.R.C.	1888	10/10/1888	1.00	See Parcel No. 40
41	Wm. Paul Smith	V.A.T.R.C.	1888	10/10/1888	1.00	See Parcel No. 41
42	Wm. Paul Smith	V.A.T.R.C.	1888	10/10/1888	1.00	See Parcel No. 42
43	Wm. Paul Smith	V.A.T.R.C.	1888	10/10/1888	1.00	See Parcel No. 43
44	Wm. Paul Smith	V.A.T.R.C.	1888	10/10/1888	1.00	See Parcel No. 44
45	Wm. Paul Smith	V.A.T.R.C.	1888	10/10/1888	1.00	See Parcel No. 45
46	Wm. Paul Smith	V.A.T.R.C.	1888	10/10/1888	1.00	See Parcel No. 46
47	Wm. Paul Smith	V.A.T.R.C.	1888	10/10/1888	1.00	See Parcel No. 47
48	Wm. Paul Smith	V.A.T.R.C.	1888	10/10/1888	1.00	See Parcel No. 48
49	Wm. Paul Smith	V.A.T.R.C.	1888	10/10/1888	1.00	See Parcel No. 49
50	Wm. Paul Smith	V.A.T.R.C.	1888	10/10/1888	1.00	See Parcel No. 50
51	Wm. Paul Smith	V.A.T.R.C.	1888	10/10/1888	1.00	See Parcel No. 51
52	Wm. Paul Smith	V.A.T.R.C.	1888	10/10/1888	1.00	See Parcel No. 52
53	Wm. Paul Smith	V.A.T.R.C.	1888	10/10/1888	1.00	See Parcel No. 53
54	Wm. Paul Smith	V.A.T.R.C.	1888	10/10/1888	1.00	See Parcel No. 54
55	Wm. Paul Smith	V.A.T.R.C.	1888	10/10/1888	1.00	See Parcel No. 55
56	Wm. Paul Smith	V.A.T.R.C.	1888	10/10/1888	1.00	See Parcel No. 56
57	Wm. Paul Smith	V.A.T.R.C.	1888	10/10/1888	1.00	See Parcel No. 57
58	Wm. Paul Smith	V.A.T.R.C.	1888	10/10/1888	1.00	See Parcel No. 58
59	Wm. Paul Smith	V.A.T.R.C.	1888	10/10/1888	1.00	See Parcel No. 59
60	Wm. Paul Smith	V.A.T.R.C.	1888	10/10/1888	1.00	See Parcel No. 60
61	Wm. Paul Smith	V.A.T.R.C.	1888	10/10/1888	1.00	See Parcel No. 61
62	Wm. Paul Smith	V.A.T.R.C.	1888	10/10/1888	1.00	See Parcel No. 62
63	Wm. Paul Smith	V.A.T.R.C.	1888	10/10/1888	1.00	See Parcel No. 63
64	Wm. Paul Smith	V.A.T.R.C.	1888	10/10/1888	1.00	See Parcel No. 64
65	Wm. Paul Smith	V.A.T.R.C.	1888	10/10/1888	1.00	See Parcel No. 65
66	Wm. Paul Smith	V.A.T.R.C.	1888	10/10/1888	1.00	See Parcel No. 66
67	Wm. Paul Smith	V.A.T.R.C.	1888	10/10/1888	1.00	See Parcel No. 67
68	Wm. Paul Smith	V.A.T.R.C.	1888	10/10/1888	1.00	See Parcel No. 68
69	Wm. Paul Smith	V.A.T.R.C.	1888	10/10/1888	1.00	See Parcel No. 69
70	Wm. Paul Smith	V.A.T.R.C.	1888	10/10/1888	1.00	See Parcel No. 70
71	Wm. Paul Smith	V.A.T.R.C.	1888	10/10/1888	1.00	See Parcel No. 71
72	Wm. Paul Smith	V.A.T.R.C.	1888	10/10/1888	1.00	See Parcel No. 72
73	Wm. Paul Smith	V.A.T.R.C.	1888	10/10/1888	1.00	See Parcel No. 73
74	Wm. Paul Smith	V.A.T.R.C.	1888	10/10/1888	1.00	See Parcel No. 74
75	Wm. Paul Smith	V.A.T.R.C.	1888	10/10/1888	1.00	See Parcel No. 75
76	Wm. Paul Smith	V.A.T.R.C.	1888	10/10/1888	1.00	See Parcel No. 76
77	Wm. Paul Smith	V.A.T.R.C.	1888	10/10/1888	1.00	See Parcel No. 77
78	Wm. Paul Smith	V.A.T.R.C.	1888	10/10/1888	1.00	See Parcel No. 78
79	Wm. Paul Smith	V.A.T.R.C.	1888	10/10/1888	1.00	See Parcel No. 79
80	Wm. Paul Smith	V.A.T.R.C.	1888	10/10/1888	1.00	See Parcel No. 80
81	Wm. Paul Smith	V.A.T.R.C.	1888	10/10/1888	1.00	See Parcel No. 81
82	Wm. Paul Smith	V.A.T.R.C.	1888	10/10/1888	1.00	See Parcel No. 82
83	Wm. Paul Smith	V.A.T.R.C.	1888	10/10/1888	1.00	See Parcel No. 83
84	Wm. Paul Smith	V.A.T.R.C.	1888	10/10/1888	1.00	See Parcel No. 84
85	Wm. Paul Smith	V.A.T.R.C.	1888	10/10/1888	1.00	See Parcel No. 85
86	Wm. Paul Smith	V.A.T.R.C.	1888	10/10/1888	1.00	See Parcel No. 86
87	Wm. Paul Smith	V.A.T.R.C.	1888	10/10/1888	1.00	See Parcel No. 87
88	Wm. Paul Smith	V.A.T.R.C.	1888	10/10/1888	1.00	See Parcel No. 88
89	Wm. Paul Smith	V.A.T.R.C.	1888	10/10/1888	1.00	See Parcel No. 89
90	Wm. Paul Smith	V.A.T.R.C.	1888	10/10/1888	1.00	See Parcel No. 90
91	Wm. Paul Smith	V.A.T.R.C.	1888	10/10/1888	1.00	See Parcel No. 91
92	Wm. Paul Smith	V.A.T.R.C.	1888	10/10/1888	1.00	See Parcel No. 92
93	Wm. Paul Smith	V.A.T.R.C.	1888	10/10/1888	1.00	See Parcel No. 93
94	Wm. Paul Smith	V.A.T.R.C.	1888	10/10/1888	1.00	See Parcel No. 94
95	Wm. Paul Smith	V.A.T.R.C.	1888	10/10/1888	1.00	See Parcel No. 95
96	Wm. Paul Smith	V.A.T.R.C.	1888	10/10/1888	1.00	See Parcel No. 96
97	Wm. Paul Smith	V.A.T.R.C.	1888	10/10/1888	1.00	See Parcel No. 97
98	Wm. Paul Smith	V.A.T.R.C.	1888	10/10/1888	1.00	See Parcel No. 98
99	Wm. Paul Smith	V.A.T.R.C.	1888	10/10/1888	1.00	See Parcel No. 99
100	Wm. Paul Smith	V.A.T.R.C.	1888	10/10/1888	1.00	See Parcel No. 100

Note - The parcel numbers in the above schedule will be found in Vol. 1, Sheet 12, Right of Way and Track Map.

Sheet Nos. 3-11 & 3-12 (9-Sheet) Main Line of the Virginia & Truckee Railway from Survey Sta. 2144+52 to Survey Sta. 2200+50.

Chief Engineer

STATION MAP  
MOUND HOUSE  
LYON COUNTY NEVADA  
LANDS TRACKS & STRUCTURES  
VIRGINIA & TRUCKEE RAILWAY  
OPERATED BY  
VIRGINIA & TRUCKEE RAILWAY  
FROM STATION 2144+52 TO STATION 2200+50  
Scale: 1 Inch = 100 feet  
DECEMBER 31st, 1910  
OFFICE OF CHIEF ENGINEER  
CARSON CITY, NEVADA

