

O R M S B Y C O U N T Y

MOUND HOUSE
Sta. Pk. 2157+301 M.L. 409

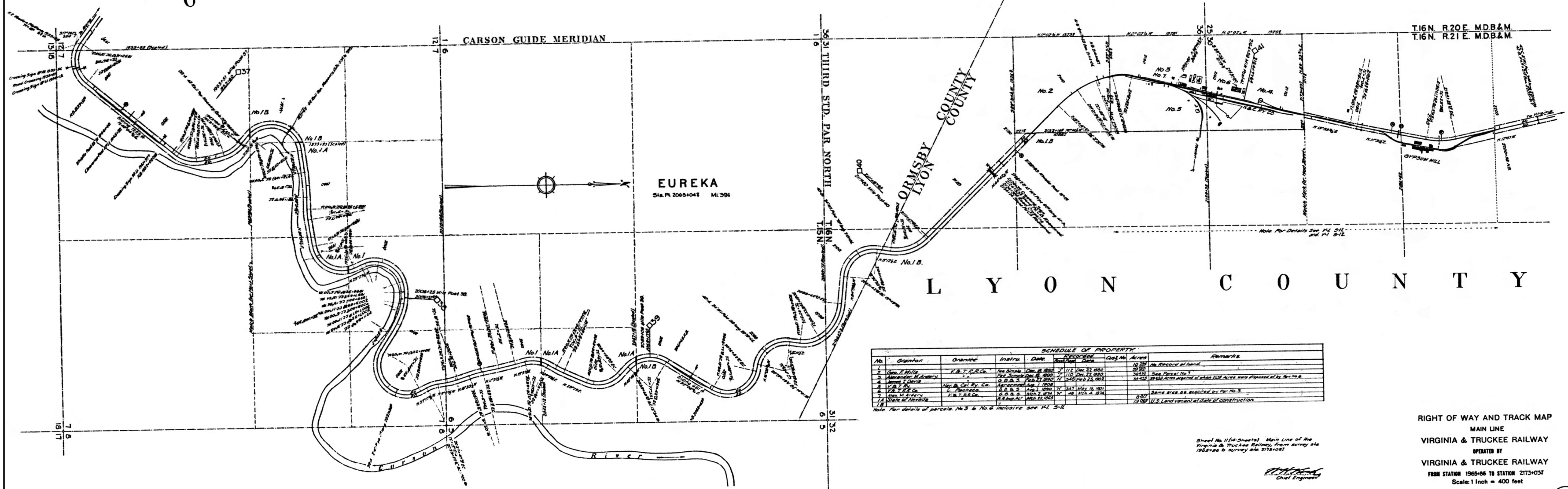
CARSON GUIDE MERIDIAN

36 31 THIRD STD. PAR. NORTH
T16N

EUREKA
Sta. Pk. 2065+042 M.L. 394

L Y O N C O U N T Y

T16N. R20E. MDB&M
T16N. R21E. MDB&M



SCHEDULE OF PROPERTY									
No.	Grantor	Grantee	Instr.	Date	RESERVE	Acres	Remarks		
1	Geo. F. Miller	T. & T. C. Co.	No. 1000	1880	1/2	32.000	No. 1000 at hand		
2	Virginia & Truckee R.R. Co.	T. & T. C. Co.	No. 1001	1880	1/2	32.000	See Parcel No. 1		
3	Virginia & Truckee R.R. Co.	T. & T. C. Co.	No. 1002	1880	1/2	32.000	See Parcel No. 1		
4	Virginia & Truckee R.R. Co.	T. & T. C. Co.	No. 1003	1880	1/2	32.000	See Parcel No. 1		
5	Virginia & Truckee R.R. Co.	T. & T. C. Co.	No. 1004	1880	1/2	32.000	See Parcel No. 1		
6	Virginia & Truckee R.R. Co.	T. & T. C. Co.	No. 1005	1880	1/2	32.000	See Parcel No. 1		
7	State of Nevada	U.S. Land	No. 1006	1880	1/2	32.000	U.S. Land vacated at date of construction.		

Sheet No. 11 (of 20 sheets) Main Line of the Virginia & Truckee Railway, from survey, etc. 1925-26 to survey etc. 2157-1927

[Signature]
Chief Engineer

RIGHT OF WAY AND TRACK MAP
MAIN LINE
VIRGINIA & TRUCKEE RAILWAY
OPERATED BY
VIRGINIA & TRUCKEE RAILWAY
FROM STATION 1965+05 TO STATION 2173+032
Scale: 1 inch = 400 feet
DECEMBER 31st, 1916
OFFICE OF CHIEF ENGINEER
CARSON CITY, NEVADA

