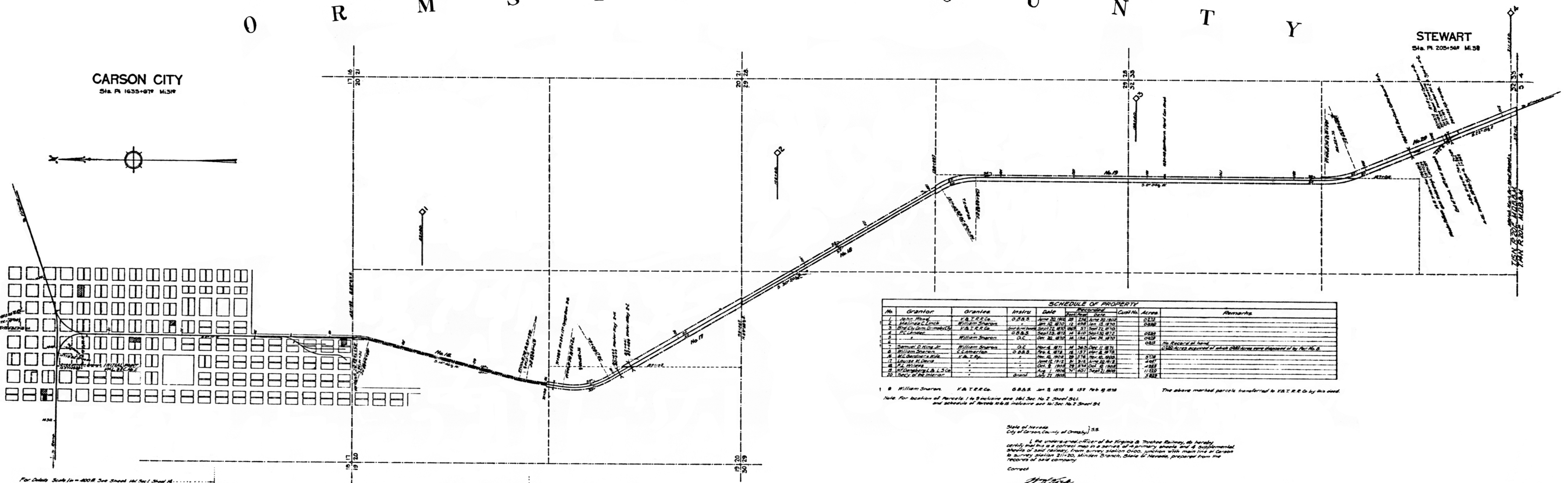


O R M S B Y C O U N T Y

CARSON CITY
Sta. Pl. 1635+07.7 M. 31.9

STEWART
Sta. Pl. 205+56.7 M. 38



SCHEDULE OF PROPERTY							
No.	Grantor	Grantee	Instr.	Date	Acres	Coal No.	Remarks
1	John P. King	V. & T. R. Co.	0283	June 20, 1870	2.24	1810	0.23
2	Marion C. Cook	William Shanon	101	Oct. 10, 1870	1.10	1810	0.23
3	King Co. Com. Co. (M.C.)	V. & T. R. Co.	102	Sept. 12, 1870	2.24	1810	0.23
4	J.C. Shanon	V. & T. R. Co.	103	Sept. 12, 1870	2.24	1810	0.23
5	Wm. Shanon	V. & T. R. Co.	104	Oct. 20, 1870	1.10	1810	0.23
6	Samuel D. King Jr.	William Shanon	105	Nov. 4, 1871	1.10	1810	0.23
7	William Shanon	V. & T. R. Co.	106	Nov. 4, 1871	1.10	1810	0.23
8	Wm. Shanon & Co.	V. & T. R. Co.	107	Nov. 4, 1871	1.10	1810	0.23
9	Wm. Shanon	V. & T. R. Co.	108	Nov. 4, 1871	1.10	1810	0.23
10	Wm. Shanon	V. & T. R. Co.	109	Nov. 4, 1871	1.10	1810	0.23
11	Wm. Shanon	V. & T. R. Co.	110	Nov. 4, 1871	1.10	1810	0.23
12	Wm. Shanon	V. & T. R. Co.	111	Nov. 4, 1871	1.10	1810	0.23
13	Wm. Shanon	V. & T. R. Co.	112	Nov. 4, 1871	1.10	1810	0.23
14	Wm. Shanon	V. & T. R. Co.	113	Nov. 4, 1871	1.10	1810	0.23
15	Wm. Shanon	V. & T. R. Co.	114	Nov. 4, 1871	1.10	1810	0.23
16	Wm. Shanon	V. & T. R. Co.	115	Nov. 4, 1871	1.10	1810	0.23
17	Wm. Shanon	V. & T. R. Co.	116	Nov. 4, 1871	1.10	1810	0.23
18	Wm. Shanon	V. & T. R. Co.	117	Nov. 4, 1871	1.10	1810	0.23
19	Wm. Shanon	V. & T. R. Co.	118	Nov. 4, 1871	1.10	1810	0.23
20	Wm. Shanon	V. & T. R. Co.	119	Nov. 4, 1871	1.10	1810	0.23

1. William Shanon, V. & T. R. Co. O.R.S. Jan 3, 1878 & 159 Feb 19, 1878
 Note: For location of parcels 1 to 9 inclusive see 1st Sec. No. 2, Sheet 54, and schedule of parcels 10 to 19 inclusive see 1st Sec. No. 2, Sheet 54.

State of Nevada
 City of Carson, County of Ormsby, ss
 I, the undersigned Chief Engineer of the Virginia & Truckee Railway, do hereby certify that this is a correct map in a series of primary sheets and supplemental sheets of said railway, from survey station 0+00, junction with main line of Carson & survey station 21+20, Minden Branch, State of Nevada, prepared from the records of said company.
 Correct

 Chief Engineer

Subscribed and sworn to before me this _____ day of _____, 1910.
 Notary Public in and for the City of Carson and County of Ormsby, State of Nevada.
 My commission expires _____ 1910.

For Details Scale 1/4" = 400 ft. See Sheet 1st Sec. 1, Sheet 54.
 For Details Scale 1/4" = 400 ft. See 1st Sec. 2, Sheets 5, 6, 7, 8, 9, 10, 11, 12, 13, 14, 15, 16, 17, 18, 19, 20.
 For Track Details Scale 1/4" = 400 ft. See 1st Sec. 2, Sheet 5, 6, 7, 8, 9, 10, 11, 12, 13, 14, 15, 16, 17, 18, 19, 20.

RIGHT OF WAY AND TRACK MAP
MINDEN BRANCH - CARSON CITY TO MINDEN
VIRGINIA & TRUCKEE RAILWAY
 OPERATED BY
VIRGINIA & TRUCKEE RAILWAY
 FROM STATION 0+00 TO STATION 21+20
 Scale: 1 Inch = 400 Feet
 DECEMBER 31st, 1910
 OFFICE OF CHIEF ENGINEER
 CARSON CITY, NEVADA

