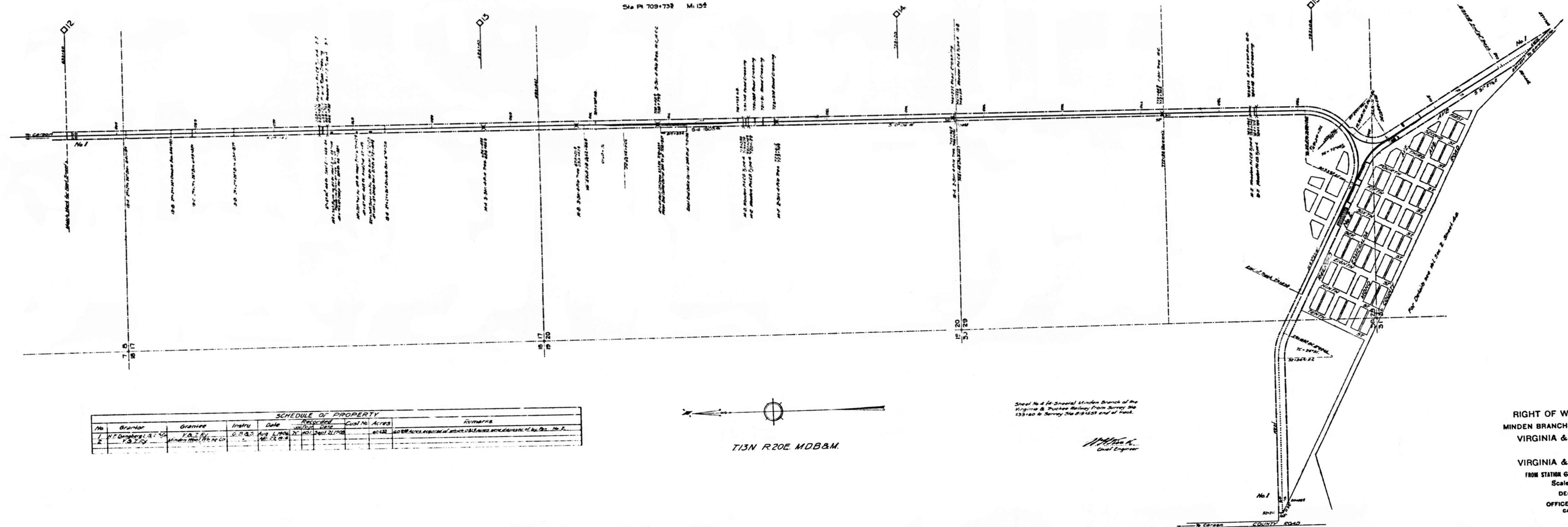


D O U G L A S C O U N T Y

STOCK YARDS
Sta. Pt. 709+732 Mi. 152

MINDEN
Sta. Pt. 803+548 Mi. 152



SCHEDULE OF PROPERTY						
No.	Owner	Acres	Date	Remarks	Dist. No.	Acres
1	H. T. Douglas, et al.	1.25	6-27-03	Acres of land owned by H. T. Douglas, et al.	1012	1.25
2	W. H. Douglas, et al.	1.25	6-27-03	Acres of land owned by W. H. Douglas, et al.	1013	1.25

Sheet No. 4 (of 3 sheets) Minden Branch of the Virginia & Truckee Railway from Survey Sta. 133+00 to Survey Sta. 819+532 end of Track.

W. H. Douglas
Chief Engineer

RIGHT OF WAY AND TRACK MAP
MINDEN BRANCH - CARSON CITY TO MINDEN
VIRGINIA & TRUCKEE RAILWAY
OPERATED BY
VIRGINIA & TRUCKEE RAILWAY
FROM STATION 633+60 TO STATION 819+532
Scale: 1 inch = 400 feet
DECEMBER 31st, 1918
OFFICE OF CHIEF ENGINEER
CARSON CITY, NEVADA.

V2
4