

ELY ARPT (YELLAND FLD) (ELY)(KELY) 3 NE UTC-8(-7DT) N39°17.98' W114°50.51'
6259 B NOTAM FILE ELY

LAS VEGAS
H-3D, L-9B
IAP, AD

RWY 18-36: H6018X150 (ASPH) S-70, D-85, 2D-130 MIRL

0.6% up S

RWY 18: REIL. PAPI(P4L)—GA 3.0° TCH 50'.

RWY 36: REIL. PAPI(P4L)—GA 3.0° TCH 50'.

RWY 12-30: H4825X60 (ASPH) S-15 MIRL 0.4% up SE

RWY 12: PAPI(P4R)—GA 3.0° TCH 40'.

RWY 30: Pole.

SERVICE: S4 FUEL 100LL, JET A OX3 LGT Rwy 36 rwy end lgts on blast pad 30' from rwy thld end markings. ACTIVATE MIRL Rwy 12-30 and Rwy 18-36, PAPI Rwy 12, Rwy 18 and Rwy 36, REIL Rwy 18 and Rwy 36—CTAF.

AIRPORT REMARKS: Attended 1600-0100Z±. Soft shoulders adjacent all rws and taxiways. Rwy 12-30 pavement cracking in excess of 3" and frost heaving blo freezing conditions. Rwy 18-36 pavement heaving in blo freezing conditions on rwy centerline. Pavement cracking in excess of 3". No special rwy treatment. Twy A south of terminal ramp failed pavement cracks exceeding 3". Fuel avbl after hrs. Glider ops on invof arpt May-Sep. Ultralight acft operating on and invof arpt dalgt hours. Cold temperature rstd arpt. Altitude correction required at or blo -31C.

AIRPORT MANAGER: 775-289-6817

WEATHER DATA SOURCES: ASOS 120.625 (775) 289-4466.

COMMUNICATIONS: CTAF/UNICOM 122.8

RCO 122.2 (RENO RADIO)

Ⓡ SALT LAKE CENTER APP/DEP CON 133.45

RADIO AIDS TO NAVIGATION: NOTAM FILE ELY.

(H) VOR/DME 110.6 ELY Chan 43 N39°17.89' W114°50.90' at fld. 6248/14E.

VOR unusable:

008°-142° byd 10 NM blo 17,500'

008°-142° byd 20 NM

142°-163° byd 20 NM blo 11,500'

163°-293° byd 16 NM

293°-343° blo 13,000'

293°-343° byd 22 NM blo 14,000'

293°-343° byd 26 NM

343°-008° byd 21 NM blo 12,000'

DME unusable:

008°-142° byd 10 NM blo 17,500'

008°-142° byd 20 NM

142°-163° byd 20 NM blo 11,500'

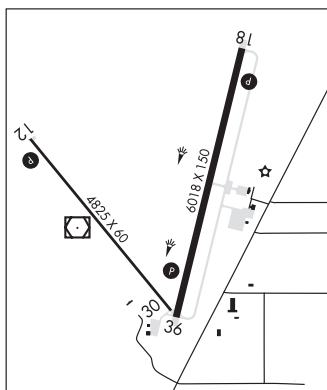
163°-293° byd 16 NM

293°-343° blo 13,000'

293°-343° byd 22 NM blo 14,000'

293°-343° byd 26 NM

343°-008° byd 21 NM blo 12,000'



EMPIRE (1A8) 1 W UTC-8(-7DT) N40°34.71' W119°21.09'

KLAMATH FALLS

3990 NOTAM FILE RNO

RWY 18-36: 3770X42 (DIRT)

RWY 18: P-line. Rgt tfc.

RWY 07-25: 3170X48 (DIRT)

RWY 07: Rgt tfc.

RWY 25: Thld dspld 800'. P-line.

AIRPORT REMARKS: Unattended. PPR, call for conditions. No tkf Rwy 07 due to p-line and ball fld lgts +50'. Rwy 25 dspld thld marked by 8 white tires. Rwy 18 thld marked with white tires. 1' berms around all rws. Use caution Rwy 18-36 very soft on south 600'.

AIRPORT MANAGER: (775) 304-6067

COMMUNICATIONS: CTAF 122.9