

Transportation Board Update

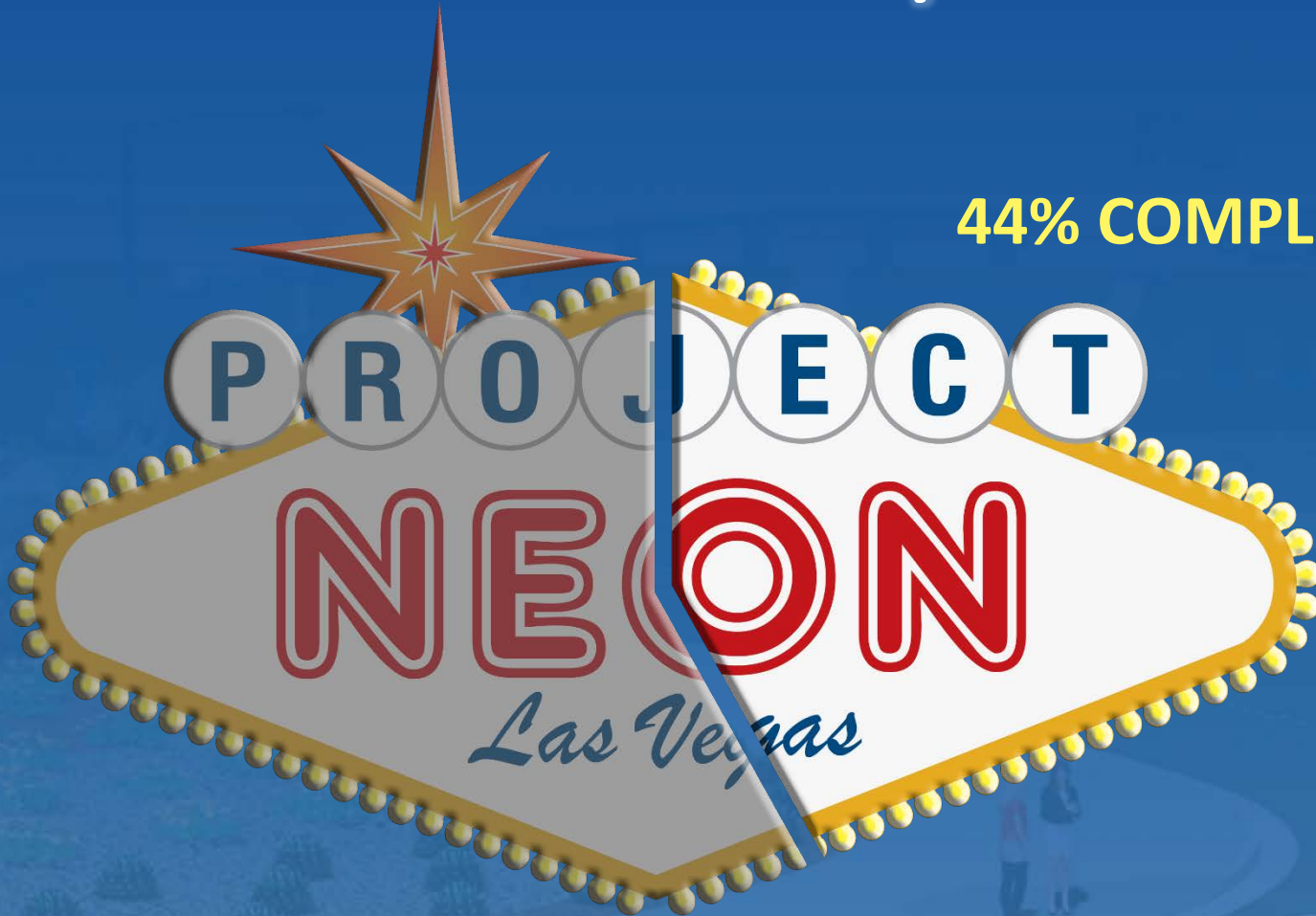
September 11, 2017





COMPLETION STATUS

Contract Days

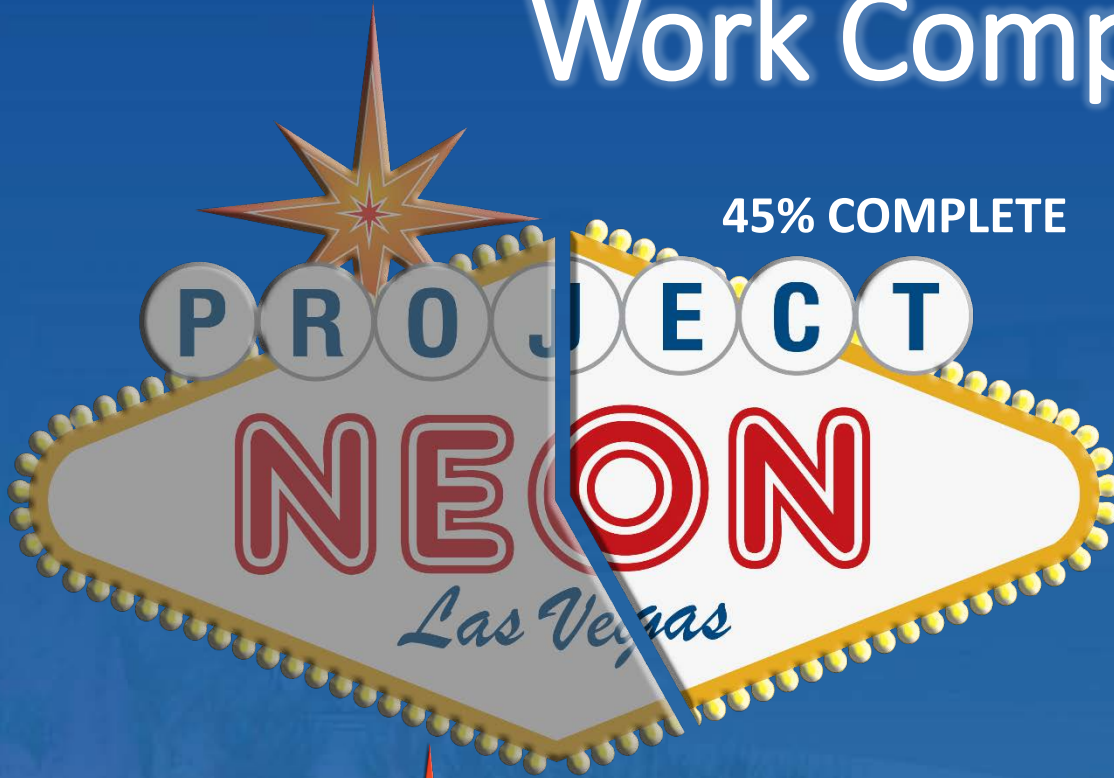


44% COMPLETE

Total Contract Days: 1,338

As of 8.25.17: 648

Work Complete



Total Contract Amount
\$571M

Spent to Date
\$258M



DESIGN



CONSTRUCTION



PROJECT

NEON

Las Vegas

CONSTRUCTION



One Year of Construction!



400,000 man hours with
ZERO recordable injuries!

One Year of Construction!

- **ATM**

- Erected longest sign structure in Nevada

- **Civil/Grading**

- Excavation: 105,170 CY
- Embankment: 348,027 CY
- Asphalt paving: 57,605 SY

- **Structures**

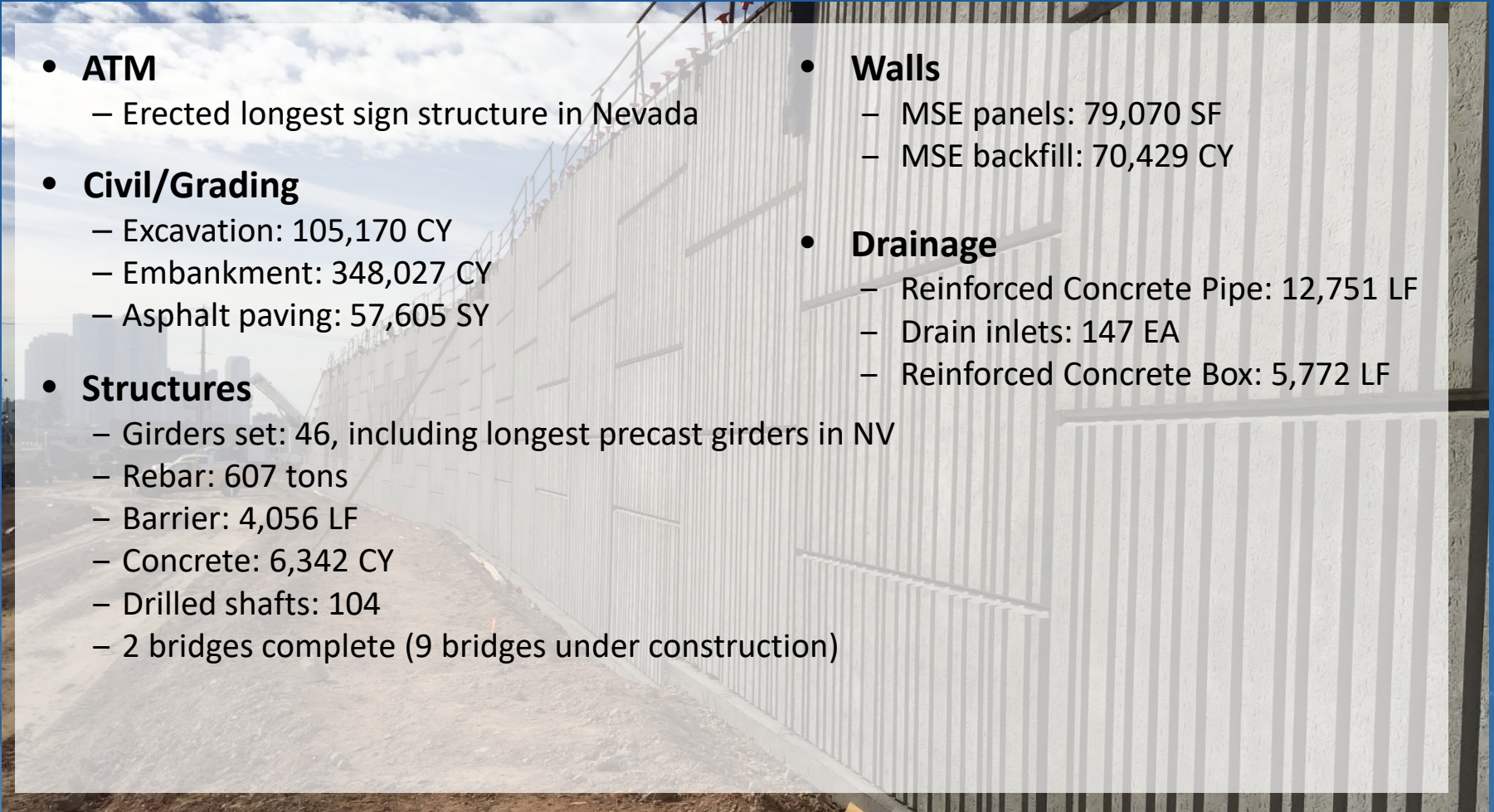
- Girders set: 46, including longest precast girders in NV
- Rebar: 607 tons
- Barrier: 4,056 LF
- Concrete: 6,342 CY
- Drilled shafts: 104
- 2 bridges complete (9 bridges under construction)

- **Walls**

- MSE panels: 79,070 SF
- MSE backfill: 70,429 CY

- **Drainage**

- Reinforced Concrete Pipe: 12,751 LF
- Drain inlets: 147 EA
- Reinforced Concrete Box: 5,772 LF



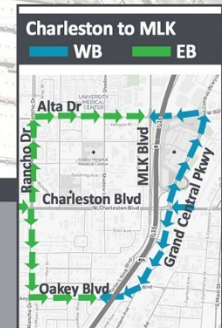
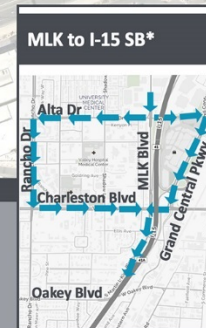
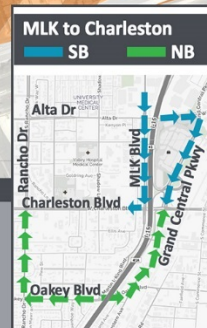
MLK Blvd Opening!

NEW MLK BLVD ALIGNMENT TO OPEN SEPTEMBER 2, 8AM

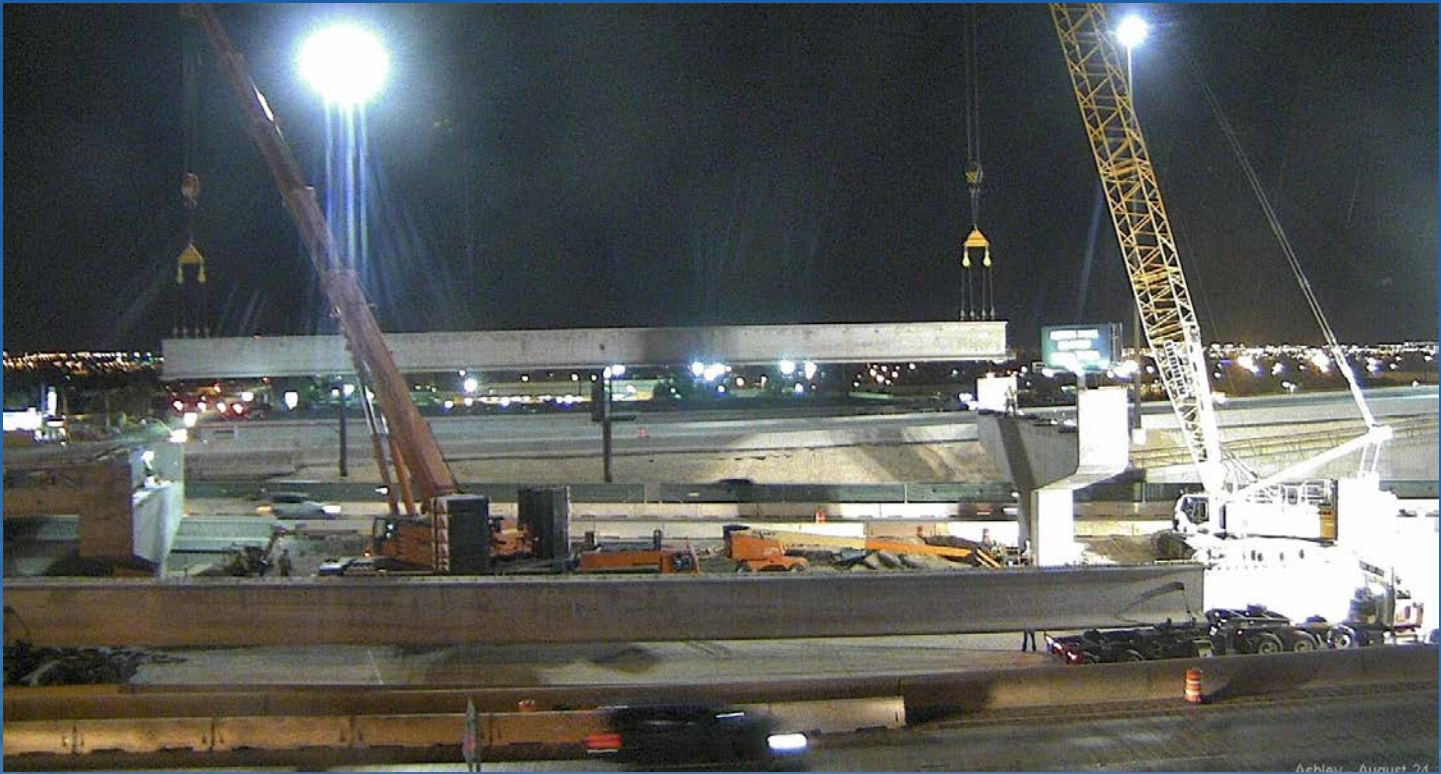
- 1 New signalized Bearden Dr access to MLK Blvd
- 2 Southbound MLK Blvd access to Charleston Blvd Westbound
- 3 MLK Blvd elevated over Charleston Blvd to improve the operation of both streets
- 4 MLK Blvd will no longer connect to the I-15 SB on-ramp; ramp still accessible from Charleston Blvd
- Emergency access only from MLK Blvd to Ellis Ave
- Construction work zone



*Additional points of access will be constructed in 2018, including access to I-15 SB from Pinto Ln



Setting HOV Girders



US 95 Bridge Demo



ATM Gantry Construction

- 3 gantries in place on US 95 NB, east of Spaghetti Bowl
- Next, 3 signs on SB US 95, Decatur to Rancho
- Then, 3 signs on I-15 SB, Washington to Spaghetti Bowl
- Signs will be operational by the end of 2017





MAJOR CLOSURES/IMPACTS

The Big Squeeze Phase 3



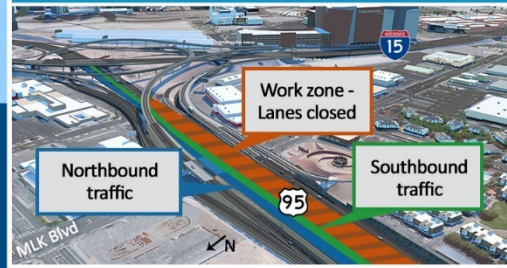
Nevada Department of Transportation

What's happening?
Project Neon is modifying US 95 to make way for the new HOV flyover between US 95 and I-15 and to rebuild one mile of pavement.

What to expect
US 95 will remain two lanes in each direction until January 2018. Beginning August 21, all traffic will be shifted into the north lanes, with the south lanes closed for construction.

PHASE 3 of 3

August 21 - January 2018



- What to do**
- Use alternate routes
 - Use Waze to find the best route to your destination
 - Use all open lanes and take turns at merge point (Zipper Merge)

US 95: REDUCED TO 2 LANES IN EACH DIRECTION Rancho Dr to Spaghetti Bowl



Wall Street Closure

WALL STREET TO CLOSE PERMANENTLY

ON SEPTEMBER 5, 2017

NEW ACCESS ROUTES waze

WHY IS WALL STREET CLOSING?	ACCESS TO MLK BLVD
 <p style="font-size: small; margin-top: 10px;">With the new connection of Western Ave to Grand Central Pkwy at Charleston Blvd, Wall Street will close permanently to make way for the new "Neon Gateway" HOV interchange.</p>	
<div style="background-color: #00a0e3; color: white; padding: 5px; text-align: center; font-weight: bold;">ACCESS TO I-15 SB</div> 	
<div style="background-color: #4b4b9b; color: white; padding: 5px; text-align: center; font-weight: bold;">CHARLESTON BLVD TO OAKLEY BLVD</div> 	



PUBLIC OUTREACH



Public Outreach Efforts

- **Website**
 - 16,167 page views (increase of 993 views)
- **Weekly Notifications Emails**
 - Summary of upcoming traffic impacts to 1,500+ recipients
- **Mobile App**
 - Push notifications for closures
 - 1,663 downloads of the app to date
- **Social Media**
 - Weekly episode of “Neon News” to highlight project/construction progress
- **Presentations/Outreach Events**
 - Institute of Transportation Engineers (ITE)
 - Building Owners and Managers Association (BOMA)
 - ASCE Young Member Forum
 - Outreach Table at 51s Game
 - MLK Blvd Fun Walk
 - Traffic Incident Management (TIM) Coalition
 - Weekly First Responder Notifications Meetings



CH2M PERFORMANCE



PROJECT NEON DESIGN-BUILD PROJECT

CH2M Performance

- Continuous, proactive communication with stakeholders captured in bi-weekly report
- Submittals & Design Reviews *(Note: Design Reviews are Complete)*
 - 264 total submittals
 - Average process time per submittal = 6 days
- 70 Transmittals to / from Kiewit
- 151 Field Design Changes / Notice of Design Changes / Lane Closure Requests / Requests for Information / Non-Compliance Reports / Work at Risk